



# Coastal Communications

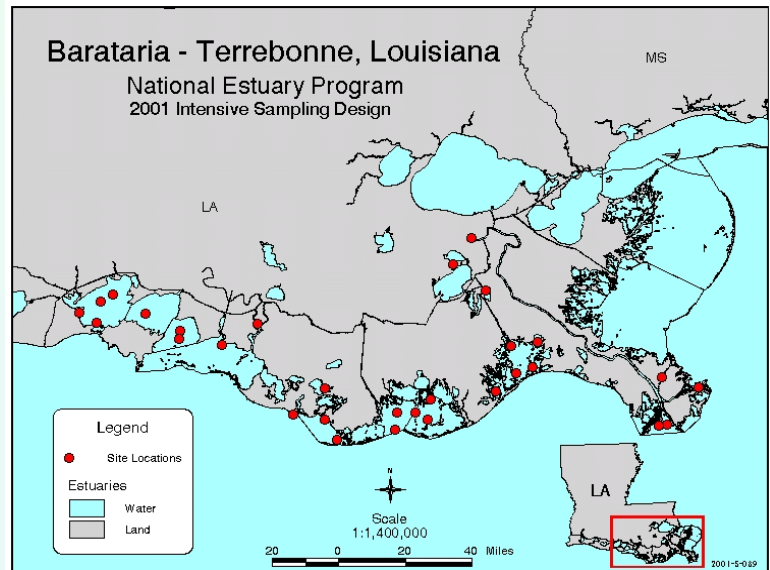


**Barataria-Terrebonne, Louisiana**  
**National Estuary Program**  
**National Coastal Assessment**  
**ORD/OW/Region 6/BTNEP/LDWF**



## Background

The U.S. EPA's National Coastal Assessment (NCA) is a multi-year partnership among EPA's Office of Research and Development (ORD), EPA's Office of Water (OW), EPA's Regional Offices, all coastal states, and selected territories. The effort described here is conducted in special partnership with the Barataria-Terrebonne National Estuary Program (BTNEP). This joint effort will evaluate the changing condition of tributaries to and coastal areas of the BTNEP. Information will also be shared with Louisiana Department of Wildlife and Fisheries (LDWF) and EPA Region 6, and contribute to state and regional assessments. The effort is being coordinated by the ORD National Health and Environmental Effects Research Laboratory's Gulf Ecology Division in Gulf Breeze, Florida.



## National Coastal Assessment Strategy

The National Coastal Assessment is a strategic partnership between EPA and the coastal states and other federal agencies. Each state or NEP uses a compatible probabilistic design and a common set of environmental indicators (see Table below) to survey its coastal resources and assess their condition. These estimates can then be aggregated to assess conditions at the EPA regional, biogeographical, and national levels. All data will be made available for public access on the Internet. The map shows the coastal areas included in the 2001 survey and the number of sampling sites in estuarine waters of Louisiana.

Water Quality	Sediment Quality	Biota
Dissolved oxygen	Grain size	Benthic community structure
Salinity, temperature, depth	Total organic carbon	Fish community structure
pH	Sediment chemistry	Fish external pathology
Nutrients	Benthic community structure	Fish tissue chemical analyses
Chlorophyll	Sediment toxicity	

## Further Information

For further information, please contact Terry Romaine at the LDWF at (225) 765-2952 or [romaine\\_tl@wlf.state.la.us](mailto:romaine_tl@wlf.state.la.us); or Kerry St. Pé at BTNEP at (9985) 447-0868 or [kerry@btnep.org](mailto:kerry@btnep.org); or Bill Walker at the ORD National Health and Environmental Effects Laboratory's Gulf Ecology Division at (850) 934-9247 or [walker.bill@epa.gov](mailto:walker.bill@epa.gov). Visit the coastal communications web site at <http://www.epa.gov/ged/crc.htm>.