

Multi-modal Partner Tool: Quick Start Guide 2015 Data Year - United States Version 2.0.15





Multi-modal Partner Tool: Quick Start Guide 2015 Data Year - United States Version 2.0.15

Transportation and Climate Division
Office of Transportation and Air Quality
U.S. Environmental Protection Agency



Office of Transportation and Air Quality
EPA-420-B-16-058
May 2016

Table of Contents

TABLE OF CONTENTS	3
WHAT'S NEW IN THIS VERSION?	4
OVERVIEW	5
SECTION 1—BASIC INFORMATION FOR MULTI-MODAL CARRIERS	7
WHAT IS THE SMARTWAY TRANSPORT PARTNERSHIP?.....	7
WHY DO MULTI-MODAL CARRIERS JOIN THE SMARTWAY TRANSPORT PARTNERSHIP?	7
HOW DO MULTI-MODAL CARRIERS JOIN THE SMARTWAY TRANSPORT PARTNERSHIP?	8
HOW DO I JOIN IF MY PARENT COMPANY HAS MULTIPLE FLEETS?.....	9
WHAT DATA DO I NEED TO GATHER TO COMPLETE THE MULTI-MODAL TOOL?.....	9
WHAT IS INCLUDED IN THE SMARTWAY MULTI-MODAL CARRIER PARTNERSHIP AGREEMENT?.....	10
WHAT SOFTWARE AND HARDWARE IS REQUIRED FOR COMPLETING THE SMARTWAY MULTI-MODAL TOOL?	11
SECTION 2— OVERVIEW OF DATA COLLECTION REQUIREMENTS	12
INTRODUCTORY SCREENS	12
PROVIDING US/CANADA OPERATIONS INFORMATION	ERROR! BOOKMARK NOT DEFINED.
ESTABLISHING YOUR DATA COLLECTION YEAR	12
SECTION 1: SPECIFY OFFICIAL PARTNER NAME.....	12
SECTION 2: ENTER CONTACT INFORMATION	13
SECTION 3: DEFINE YOUR COMPONENT FLEETS	13
SECTION 4: DOWNLOAD LATEST SMARTWAY CARRIER DATA FILE.....	21
SECTION 5: DATA ENTRY FOR FLEETS	21
SECTION 5 DATA ENTRY: ENTER FUEL AND/OR ACTIVITY INFORMATION FOR EACH OF YOUR COMPONENT FLEETS.....	21
SECTION 6 DATA ENTRY: DEFINE YOUR COMPOSITE FLEETS.....	22
APPENDIX A: WORKSHEETS FOR DATA COLLECTION	25
WORKSHEET #1: COMPANY AND CONTACT INFORMATION	26
WORKSHEET #2: COMPONENT FLEET CHARACTERIZATION	27
WORKSHEET #3A: IDENTIFY COMPOSITE FLEETS AND COMPOSITE FLEET DETAILS	28
WORKSHEET #3B: ALLOCATE COMPONENT FLEETS	29

What's New in this version?

Version 2.0.15 of the Multi-modal Tool contains a number of updates and revisions to the prior version, 2.0.14. These updates have been implemented to enhance the usefulness and clarity of the Tool, and are summarized below:

- Screen backgrounds and navigation icons have been updated to improve visibility.
- The introductory screens have been re-organized to help new partners become oriented, and allow returning partners to proceed through the tool more quickly.
- An “auto-population” option has been added, allowing partners to input their SmartWay ID and automatically upload the information for the initial steps of the tool based on the prior year’s submittal or, for new partners, information submitted through the Partner Portal “On-ramp”. This option can save time and ensure naming consistency from year to year.
- The Home screen has been reorganized for clarity.
- Fleet-specific contacts are no longer requested.
- U.S. partners may now provide National Safety Codes (NSCs) for any fleets with Canadian operations.
- The operations split between the U.S. and Canada is now required at the composite fleet level rather than the partner level.
- For Truck component fleets –
 - % Cube-out, Commodities, and Port Dray Program Status are no longer requested.
 - For fleets categorized as Less-than-truckload/Dry van, data for the average number of loads per truck and weight per load are now required.
 - Activity Data Sources are now entered on a separate screen, reducing data entry requirements. Separate data sources for each truck class within a fuel type are no longer required.
 - The payload calculators have been streamlined, removing the data source selection and combining data entry into a single screen.
 - Payload values can now be entered specifically for auto, heavy-bulk, and mixed carriers.
 - A Specialty Hauler option has been added to the Class 8b Volume Calculator.
 - Grams per mile emission factors for NOx and PM have been updated using EPA’s MOVES2014a emissions model.
 - Reefer fuel validation ranges are now scaled to the percentage designated as reefer in the Fleet Description(s) section.
 - The warning threshold for annual idle hours has been raised from 100 to 200 hours per truck per year for fleets with a “No Idle” policy, to account for minimal/incidental idling and non-compliance.
- For Logistics component fleets –
 - Fleets with a large number of carriers may use a new carrier matching function to help match their carrier lists with the records in the SmartWay database.
 - Data Availability Options are now restricted to: a) ton-miles and total miles, b) ton-miles and average payload, c) total miles and average payload, and d) total miles only.
 - The Average Density and Load Percent fields have been removed from the Activity tab.
 - Partners no longer have to select an inventory calculation method on the Activity tab.
- Miscellaneous text and format updates for clarification.

Overview

In this guide you will learn about:

- 1) SmartWay Basic Information
- 2) Joining SmartWay Transport Partnership as a multi-modal carrier
- 3) Understanding the details of the SmartWay partnership agreement
- 4) Meeting software/hardware requirements for participating in the program
- 5) Gathering the data necessary for participation in SmartWay.

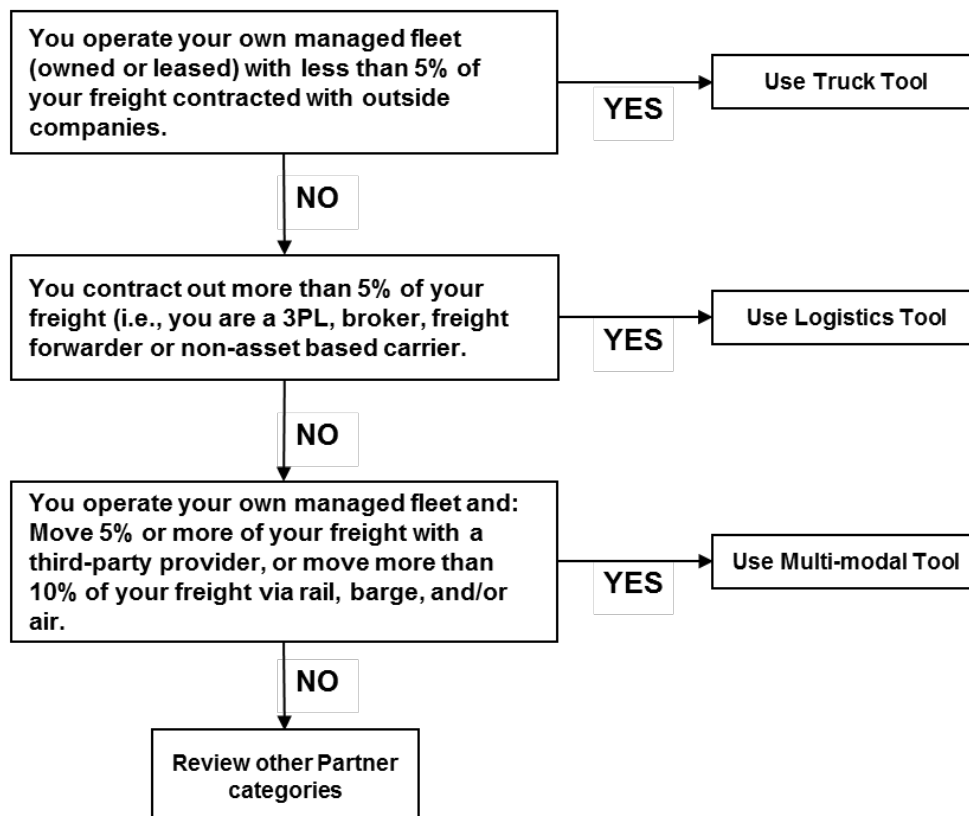
Please review this guide carefully **BEFORE** attempting to gather your company data, or entering data into the **Multi-modal Tool**. Understanding the basics of the program will simplify your SmartWay experience.

WARNING:

*****Before beginning, use this chart to make sure you are choosing the right tool for your operations! *****

If you think you might be a Multi-modal Carrier, but are not certain, the chart below can help.

Is this the right SmartWay tool for me?



If none of the above seem applicable, contact EPA SmartWay at 734-214-4647 for assistance.

SPECIAL CASE: Freight carried by a partner's component truck fleet (A) for their composite intermodal business unit (B) should be allocated to business unit (B) in the "Allocate Component Fleets" tab (accessed through Section 6. of the Home screen). It should not be added in the Logistics section of the tool, which would create a risk of "double-counting" that freight.

Section 1—Basic Information for Multi-modal Carriers

This section covers frequently asked questions and essential information about the SmartWay Transport Partnership and how multi-modal carriers can participate.

WHAT IS THE SMARTWAY TRANSPORT PARTNERSHIP?

Launched in 2003, the SmartWay Transport Partnership is a public/private collaboration between the EPA and the freight industry to improve fuel efficiency, increase environmental performance, and encourage supply chain sustainability.

Seven types of freight transport companies can join SmartWay.

- Freight shippers
- Logistics companies (including 3PLs/4PLs¹)
- Truck carriers
- Rail carriers
- Barge carriers
- Air carriers
- Multi-modal carriers

Companies join the SmartWay Transport Partnership by submitting a partner tool to SmartWay. The SmartWay tools (1) assess freight operations, (2) calculate fuel consumption and carbon footprints, and (3) track fuel-efficiency and emission reductions. SmartWay tools must be submitted each year for the company to remain a partner in good standing. Tools submitted and approved on time qualify partners to use the SmartWay Logo.

SmartWay ranks Partners' efficiency and environmental performance and recognizes superior performance through the SmartWay Excellence Awards.

WHY DO MULTI-MODAL CARRIERS JOIN THE SMARTWAY TRANSPORT PARTNERSHIP?

The SmartWay Transport Partnership provides multi-modal carriers with ways to reduce the environmental impact of their freight operations and address costs. Designed with and for the freight sector, the SmartWay Transport Partnership delivers solutions to marketplace needs and challenges. With access to the latest in EPA-tested technologies and peer-provided success stories, carriers that join the SmartWay Transport Partnership can gain a better understanding of their environmental footprint and assert their corporate leadership.

Additionally, SmartWay Partners are associated with an internationally recognized and respected brand that symbolizes cleaner, more efficient transportation choices.

Multi-modal carriers that join SmartWay move significant amounts of freight with SmartWay Carriers. The higher efficiency of carriers in SmartWay compared to non-SmartWay carriers gives SmartWay

¹ 3PLs/4PLs Third party logistics companies/fourth-party logistics companies.

multi-modal carriers an opportunity to improve corporate freight efficiency, reduce their carbon footprint, and voluntarily advance freight sustainability for themselves and their customers.

Participation in SmartWay helps SmartWay Multi-modal Partners

- identify opportunities to improve efficiency,
- demonstrate efficiency to customers and stakeholders,
- evaluate and compare carrier performance, and
- determine the company's transportation carbon footprint.

SmartWay provides multi-modal carriers with free tools that help assess and compare various freight transportation options with detailed reports and analyses that support better business decision making.

HOW DO MULTI-MODAL CARRIERS JOIN THE SMARTWAY TRANSPORT PARTNERSHIP?

Multi-modal carriers join SmartWay by submitting a SmartWay Multi-modal Tool (hereafter known as the "Multi-modal Tool," or simply, the "Tool.")

Multi-modal carriers that submit tools that are approved by EPA are known as "SmartWay Multi-modal Carrier Partners."

When a multi-modal carrier submits a Multi-modal Tool to EPA, they agree to the requirements stipulated in the SmartWay Multi-modal Carrier Partnership Agreement--notably, that they will measure and report the emissions performance of their company *annually* and provide supporting documentation to EPA upon request.

All SmartWay Multi-modal Carrier Partners agree to complete and submit the SmartWay Multi-modal Tool to:

- define fleet(s) composition
- characterize fleet activity
- individually benchmark multiple fleets
- track annual changes in performance

Upon approval of a Multi-modal Tool submission, a multi-modal carrier will be identified as a SmartWay Multi-Modal Carrier Partner on EPA's website, on the SmartWay Partner List, and in a database used to identify companies that meet SmartWay's annual requirements. The Carrier will also receive information on how to access its current SmartWay registration document.

How Do I Join if My Parent Company Has Multiple Fleets?

Companies that join the SmartWay partnership should include all of their fleets in their submission. If a company wishes to list multiple fleets in the Multi-modal Tool, they should list these fleets as their customers can hire them. Internal fleets invisible to a customer should not be listed separately. Companies will be listed at the Company level in the SmartWay Partner list on the SmartWay website, and each individually defined fleet will appear as a separate entity in the SmartWay Carrier Data file that customers use to identify which fleets they do business with in the Multi-modal Tool.

SmartWay highly recommends developing your list of fleets before beginning your data entry process. Any fleet that a shipper or logistics company could hire directly should be listed as a separate fleet in your Multi-modal Tool submission.

The best strategy is to have a clear idea of how to define your companies before filling out the Tool.

What Data Do I Need to Gather to Complete the Multi-modal Tool?

To participate in SmartWay, multi-modal carriers need to gather the following essential information to complete the Multi-modal Tool:

- The official company name, EXACTLY as you would like it presented on the EPA website
- Company contact information
- Contact details for your Working Contact
- Contact details for an Executive Contact (cannot be the same as the Working Contact)
- Fleet details
 - Types of equipment,
 - Vehicle/vessel/aircraft use by type
 - Fuel types and amount used
 - Engine information, total ton-miles and total miles) plus:
 - Operation categories
 - Body Types
 - Business Unit Focus (e.g., logistics provider, freight forwarder, freight broker, or truck carrier) for Logistics Tool only
 - Composite fleet names and associated component fleets
 - Component fleet allocation percentages
 - SCAC, Motor Carrier Numbers (MCNs), DOT numbers, and/or National Safety codes (NSCs, for Canadian-registered trucks) for composite fleets
 - Split between US/Canada operations for composite fleets
- Data sources for all data to be entered
- SmartWay ID number (if this is not your first tool submission)

This data must be provided for all of your company's fleets. This data reflects the amount of freight carried by each carrier, the distance that freight is carried, and the fuel consumed to carry the freight.

WHAT IS INCLUDED IN THE SMARTWAY MULTI-MODAL CARRIER PARTNERSHIP AGREEMENT?

To join the SmartWay Transport Partnership as a multi-modal carrier, you must agree to the language on the “Partnership Agreement for multi-modal carriers.” When you begin working within the Tool, you will be asked to check a box stating that you agree to the terms of the partnership agreement. **This agreement must be renewed annually.**

Please review this language with the appropriate personnel within your organization before completing or submitting a Tool to EPA. Your company’s Executive Contact must approve this agreement.

Partnership Agreement for Multi-modal Carriers

With this agreement, your company joins EPA’s SmartWay Transport Partnership and commits to:

1. Measure and report to EPA on an annual basis the environmental performance of your fleet(s) using EPA’s SmartWay Tool. (Existing fleets must report the 12 months of data for the prior year ending December 31. Newly formed companies require a minimum of 3 months of operational data.)
2. Have performance results and Tool submittal status posted on the EPA SmartWay website/database.
3. Agree to submit supporting documentation to EPA for any data used to complete this Tool and agree to EPA audit of this data upon request by EPA.

In return, EPA commits to:

1. Promote company participation in the Partnership by posting Partner names on the EPA SmartWay website and in related educational, promotional, and media materials. EPA will obtain express written consent from the Partner before using the Partner’s name other than in the context of increasing public awareness of its participation as described here.
2. Provide companies with industry-wide performance benchmark data as this data becomes available to EPA.²
3. Assist Partners in achieving emission and fuel usage reduction goals (subject to Federal Government Appropriations).

General Terms

1. If the Partner or EPA defaults upon this agreement at any point, the agreement shall be considered null and void.
2. Either party can terminate the agreement at any time without prior notification or penalties or any further obligation.
3. EPA agrees not to comment publicly regarding the withdrawal of specific partners.
4. EPA reserves the right to suspend or revoke Partner status for any Partner that fails to accomplish the specific actions to which it committed in the SmartWay Transport Partnership Agreement and subsequent annual Agreements.
5. The Partner agrees that it will not claim or imply that its participation in the SmartWay Transport Partnership constitutes EPA approval or endorsement of anything other than the Partner’s commitment to the program. The Partner will not make statements or imply that EPA endorses the purchase or sale of the Partner’s products and services or the views of the Partner.

² Individual corporate data will be treated as sensitive business information.

6. Submittal of this SmartWay Tool annually constitutes agreement to all terms in this Partnership Agreement. No separate agreement need be submitted.

WHAT SOFTWARE AND HARDWARE IS REQUIRED FOR COMPLETING THE SMARTWAY MULTI-MODAL TOOL?

The Multi-modal Tool was designed in “Microsoft Excel Forms.” Completing the Multi-modal Tool requires the following software and hardware:

- A 2007 or later version of Microsoft Excel
- Excel security level set at Medium or lower
- A PC running Windows XP or a newer operating system, or a Mac that is running the Windows XP operating system (the Tool does not currently work using the Mac operating system)
- A minimum of 15 megabytes of free disk space. More disk space may be required based on the number of companies you define in your tool
- Adequate memory (RAM) to run Microsoft Office
- A monitor resolution of at least 1,024 x 768

NOTE: The Excel web application in MS Office 365 (the cloud-based version of the Office operating system) does not currently support the macros used in the SmartWay tools. Therefore SmartWay tools do no function properly in Office 365 at this time.

Please check with the user guides for your computer, online support, or your company’s IT department to make sure your system is set up to use the Multi-modal Tool.

We encourage you to make sure that you virus software is up to date, and to scan your PC before putting data in the Multi-modal Tool.

Section 2— Overview of Data Collection Requirements

This section will explore the data needed for completing the required sections of the Multi-modal Tool. **The Multi-modal Tool Data Entry and Troubleshooting Guide** explains more about the structure of the tool and the data entry process; this guide will focus primarily on the essentials for completing the tool.

INTRODUCTORY SCREENS

Upon opening the 2016 Multi-Modal Tool you will see a **Welcome** screen. (The 2016 Tool is called “Version 2.0.15” because it uses 2015 data.) Next you will find three Introduction screens. If you are not familiar with the Tool, or if you wish to review the basic organization and functions of the Tool, these three screens can help you get oriented. The Assistance for New Users screen appears first, and allows users to view an orientation video. Additional screens may be accessed from this screen, including Tool selection guidance, data collection needs, Tool help and navigation, and the SmartWay Partner Schedule for 2016. These are general information screens and may be skipped if you are already familiar with the Tool. However, upon proceeding you **MUST** select the box at the bottom of the Partnership Agreement screen, indicating that you agree to the terms of the Partnership Agreement.

BEFORE PROCEEDING TO THE HOME SCREEN YOU WILL SEE AN “AUTO-POPULATION” SCREEN. THIS SCREEN ALLOWS PARTNERS TO INPUT THEIR SMARTWAY ID AND AUTOMATICALLY UPLOAD THE INFORMATION FOR THE INITIAL STEPS OF THE TOOL (PARTNER NAME, CONTACT INFORMATION, AND, FOR EXISTING PARTNERS, TRUCK AND LOGISTICS FLEET INFORMATION), BASED ON THE PRIOR YEAR’S SUBMITTAL OR, FOR NEW PARTNERS, INFORMATION SUBMITTED THROUGH THE PARTNER PORTAL “ON-RAMP”. THIS OPTION CAN SAVE TIME AND ENSURE NAMING CONSISTENCY FOR YOUR CONTACTS AND FLEET(S) FROM YEAR TO YEAR. IF YOU DO NOT HAVE A SMARTWAY ID, OR PREFER TO ENTER THIS DATA MANUALLY, YOU MAY SKIP THIS STEP.

ESTABLISHING YOUR DATA COLLECTION YEAR

Before beginning your data collection, identify the last calendar year for which you have full annual (12 months) data. This means that you have data from January of the calendar year through December of the same year. If you are submitting for the first time and do not have a full year of operational data, please collect **a minimum of three months’ data** for input into the SmartWay Tool. In your next update year, you will be required to submit a full year’s data.

SECTION 1: SPECIFY OFFICIAL PARTNER NAME

Your Partner Name is the official name that your customers would recognize for your company—in other words, the name someone hiring you would look for.

You must specify your company’s official Partner Name, exactly as you want it to appear on the SmartWay website.

For example, if you enter:

- ABC Company
- ABC Company, Inc.
- ABC COMPANY LLC

Your company will be listed ***exactly*** as you've entered above. Therefore, it is important to pay special attention to proper capitalization, abbreviations, annotations, and punctuation.

If you selected the auto-populate option please review the Partner Name as it appears on the screen, revising it as necessary.

SECTION 2: ENTER CONTACT INFORMATION

The SmartWay tool asks for:

- **General company information** such as location, web address, phone number, etc.
- **A Working Contact**³ for any questions about your company's participation and tool submissions
- **An Executive Contact**⁴ for participation in awards and recognition events
- **Additional contacts (optional)**: Additional contacts may include anyone who is not the Working Contact but may be involved with SmartWay (e.g., press/media contact, fleet manager, etc.).

Note that you MUST have at least two contacts listed in the contact information section of the Tool, and the Working and Executive Contacts must be different. SmartWay recommends developing an internal succession plan to make sure that your Truck Carrier Tool submission schedule is maintained, in the event that a Working Contact is reassigned, or leaves the company for any reason.

SECTION 3: DEFINE YOUR COMPONENT FLEETS

Understanding Component and Composite Fleets:

Multi-modal companies are somewhat more complicated to characterize than truck, rail, air, or barge-only companies. Often, multi-modal services are comprised of a wide range of truck, rail, barge, and/or dray services that may be provided by the company or purchased from third party providers by the

³ The Working Contact is the individual designated by the Executive Contact to directly interface with SmartWay regarding specific tasks involved in the timely submission of the tool. The Working Contact is responsible for coordinating the assembly of information to complete/update company data; completing and updating the tool itself; maintaining direct communication with SmartWay; and keeping interested parties within the company apprised of relevant developments with SmartWay.) NOTE: To ensure that emails from SmartWay/EPA are not blocked, new primary contacts may need to add SmartWay/EPA to their preferred list of trusted sources.)

⁴ The Executive Contact is the company executive who is responsible for agreeing to the requirements in the SmartWay Partnership Agreement, overseeing the Working Contact (as appropriate), and ensuring the timely submission of the tool to SmartWay. The executive contact also represents the company at awards/recognition events. This person should be a Vice President or higher-level representative for the company.

company. To properly characterize the emission rates for multi-modal companies, one must account for this wide variety of operations and service levels.

Note: Multi-modal rail freight is defined as any freight transported by a multi-modal carrier, which may include intermodal containers as well as other cargo configurations such as boxcars, tanker cars, etc.

To accomplish this SmartWay has developed the concept of “component” and “composite” fleets.

Composite fleets are entities that your customers can hire to move their freight. For example you may have a Truckload Division and an Intermodal Division, whereas **Component fleets** are organized around your internal management of the company.

In the Multi-modal Carrier Tool you will be asked to input data for all of your component fleets which will include those you own and manage as well as any hired services you purchase. Once these component fleets have been characterized you will be asked to build your composite fleets (the ones the public sees and can hire) from your component fleets. This process will attribute the appropriate weighted emission factors to your composite fleets, and demonstrate to your customers the benefits of using your multi-modal freight services.

Example: Company “J” has a Truckload Division, an Intermodal Division, and a Dray Division that the public can hire. Internally the company has its own truckload fleet, it hires a 3PL, it hires rail services, it has its own dray fleet, and it hires dray companies.

The Truckload Division’s services are provided by its own truckload fleet and its hired 3PL fleet.

The Dray Division’s services are provided by its own dray fleet and hired dray services

The Intermodal Division’s services are provided for by its own truckload fleet, its own dray fleet, its hired rail services, and its hired dray services.

Therefore the partner defines the following component fleets:

1. For its truckload fleet (using the Truck Mode selection)
2. For its dray fleet (using the Truck Mode selection)
3. For its 3PL fleet and hired dray operations (using the Logistics Mode selection)
4. For its rail operations(using the Rail Mode selection)

The partner will then assign the appropriate operations of these component fleets to define the composite fleets that the public can hire:

Composite Fleet One: Truckload Division

60% of its truckload fleet, 70% of its 3PL fleet

Composite Fleet Two: Intermodal Division

40% of its truckload fleet, 30% of its 3PL fleet, 100% of its hired rail, 80% of its hired dray fleet, and 40% of its own dray fleet

Composite Fleet Three: Dray Division

20% of its hired dray fleet, 60% of its own dray fleet

NOTE: Drayage operations should be included in the SmartWay Multi-modal Carrier Tool if your company controls drayage movements (e.g., receives payments directly to move the freight using your own drayage trucks, or purchases drayage services directly from a third party).

Defining Component Fleets:

On the **Home** screen select the pull-down menu next to “Define Your Component Fleets” to display the available component fleet modes. The Multi-modal Carrier Tool currently allows users to define truck, logistics, rail, barge, and air component fleets. Other modes will be added to the Tool in the future, including a marine module.

Note that some terminology on the Define Component Fleets screens are slightly inconsistent between the Truck Mode and the Logistics Mode, however the two modes work and act the same. For example, “fleets” within the Truck Mode are referred to as “Business Units” within the Logistics Mode.

When you select a Component Carrier Mode, a set of screens will automatically appear allowing you to characterize your fleet(s) for that mode.

There are four screens in the **Truck Fleet Characterization** section of the Tool. The first two screens are also common to the Logistics Mode:

1. Identify Fleets
2. Fleet Details
3. Operation
4. Body Types

Screen 1: Identify Fleets is shown below for the Truck Mode. Note that the data entry screens for Logistics Carriers contains the same required fields as for the Truck Mode, with the exception of the “95+% Control” field, as discussed below.

Steps for Completing “Identify Fleets” Screen

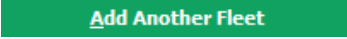
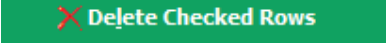
Enter data for your first component fleet including:

- **Fleet (Partner Name):** Each of your component fleet names will begin with the name of your company. This fleet name will be whatever you enter in the Fleet Name (Partner Name) field on the Identify Fleets screen. By default, this field is automatically populated with the first 50 characters of the Partner Name that was entered on the **Home** screen. Whatever you enter for Fleet Name for the first fleet will automatically be used for any additional fleets you add. Similarly, any edits you make to the Fleet Name for the first fleet will automatically be reflected

on each subsequent fleet. Note that this field is called Company Name for Logistics component fleets.

- **Fleet Identifier:** Please make sure to specify each fleet identifier name exactly as you want it displayed on the SmartWay website, including proper capitalization, any abbreviations, and punctuation. Remember that it will automatically be combined with the Fleet Name (Partner Name) field. NOTE: If you have only one fleet, you may leave the Fleet Identifier field blank, in which case your fleet name will simply be your Partner Name. Note that this field is called the Business Unit Identifier for Logistics component fleets.


Adding and Deleting Component Fleets



To enter another component fleet, select the  button. To delete a component fleet, select the box next to the row you wish to delete, and then select the  button. Once you have confirmed or modified the Partner Name and specified the Fleet Identifiers, the full Fleet Names will be displayed on the screen to the right of the screen.


Adding Comments/Notes

Creating useful comments assists SmartWay Tool reviewers in approving your Tool as quickly as possible. Your comments help reviewers understand your business model. Any details that you can provide related to your business operations will speed up approval time.




Please note the  button located at the bottom of the screen. This allows you to enter notes about the collection process, your assumptions and methods, data, or other information. These details could prove useful for your reviewer when you or someone else fills out the Tool

next year. If comments have been added for a particular screen, the  button will now read  to indicate to your reviewer that there are comments to be read.

A  button is also available should you need assistance. You will also notice small gray icons with question marks [?] displayed throughout the Tool. When clicked, these icons provide additional information about specific items located on the screen.



To proceed, select the [Fleet Details](#) tab at the top of the screen, or simply select the  button at the bottom of the screen.

Steps for Completing “Fleet Details” Screen

Using data collected using **Worksheet #2: Component Fleet Characterization** in the **Part II Workbook**, enter data for your fleets. For each you will need to specify:

- **95% Control:** Select this box if your company controls over 95% of the operation of each fleet, weighted by miles. “Control” means that you operate/route the fleet, regardless of ownership status. Control includes dedicated fleets that you operate for other parties. If you contract out more than 5% of the fleet’s operation, the Logistics mode should be selected instead for that fleet. (Note this box is not included in the Fleet [Details](#) screen for the Logistics Mode selection.)

The key question regarding definition of “control” is: Am I able to influence the fuel efficiency of the trucks, and can I collect data on the trucks? SmartWay understands that control within the trucking business exists along a continuum. On one hand, some fleets purchase their own trucks, spec, maintain, and route the trucks, and have full operational control over the trucks, for example controlling the speed the trucks are allowed to drive, when and where they can idle, etc. These fleets have a high degree of control. On the other end of the continuum, some companies hire other parties to move the freight, and other than assigning a load with a pickup/destination point, have no interaction with the freight delivery, or ability to influence the fuel efficiency of the truck or the collection of data on the truck.

If you can actively affect the fuel efficiency of the truck and collect the data necessary on that truck to include in this Tool, you have control. SmartWay understands that there are many organizational/operational permutations in the trucking industry and there may be “gray” areas that need further clarification. If you still have questions, you may contact your assigned SmartWay Partner Account Manager or the SmartWay help line at 734-214-4767.

- **Standard Carrier Alpha Codes (SCACs):** The Standard Carrier Alpha Code is a unique 2-4 alphabetic character code used by the transportation industry to identify transportation companies. If your fleet has a SCAC, please input that information. If you have a single fleet that has multiple SCACs, enter all of the codes into the SCAC field, and separate them with commas. It is not required to enter SCAC information for each component fleet. SCACs are assigned by the National Motor Freight Traffic Association, Inc., (NMFTA). If you cannot remember your SCAC(s), please contact NMFTA before proceeding. You can find NMFTA contact information at <http://www.nmfta.org/Pages/ContactUs.aspx>.
- **Motor Carrier Number (MCN):** The Motor Carrier Number is a 5, 6, or 7 digit number provided by the Federal Motor Carrier Safety Administration. If your fleet has a Motor Carrier Number, please input that information. It is not required to enter MCN information for each component fleet.
- **Department of Transportation (DOT) Numbers:** The carrier identification number issued to all carriers in the U.S. by the Federal Motor Carrier Safety Administration, and can be up to 7 digits in length.
- **National Safety Code (NSC) Numbers** are carrier identification numbers issued to fleets with Canadian registration.

NOTE: Entering SCACs, MCNs, DOT, and NSC numbers are optional; however, if you have this information you are encouraged to supply it to make sure that SmartWay Shippers and Logistics companies can identify you.

- **Fleet Type:** Fleet Type is defined as the service type for your fleet. There are three options accepted by the Tool—“For-Hire,” “Private,” and “Dedicated.” If your company has only one fleet, your “Fleet Type” selection will reflect your company’s operations as a whole. If there are multiple fleets, each will have its fleet type defined separately.

Steps for Completing “Operation” Screen:

For each component fleet, fill out the **Operation Category (%)** information by indicating the percentage of operation on a mileage basis. Operational categories include:

- **Truckload (TL)** - Truckload shipping is the movement of large amounts of homogeneous cargo, generally the amount necessary to fill an entire semi-trailer or intermodal container. A truckload carrier is a trucking company that generally contracts an entire trailer-load to a single customer.
- **Less-than-truckload (LTL)** - Less-than-truckload carriers collect freight from various shippers and consolidate that freight onto enclosed trailers for linehaul to the delivering terminal or to a hub terminal where the freight will be further sorted and consolidated for additional linehauls.
- **Drayage** - Predominantly associated with port, or rail-head connections where freight is picked up, and moved to another transfer facility or transport mode terminal. Often these moves are short in nature, but can be longer depending on specific situations.
- **Package delivery (PD)** - Covers operations characterized by residential or business package delivery/pickup consisting primarily of single or small groups of packages. It does not include larger scale pickup delivery operations that are more properly characterized as LTL operations. Common examples of this type of operation are the brown UPS and white FedEx delivery vehicles.
- **Expedited** - Time-sensitive freight shipments, with trucks typically on stand-by.

Enter the percent of each operational category based on approximate mileage. This percentage calculation does not need to be exact but should be reasonably reflective of your fleet.

Steps for Completing “Body Types” Screen:

Next, fill out the **Body Type** fields, indicating the percentage by body type for each component fleet. Body Type categories include:

- Dry van/box van
- Refrigerated (Reefer)
- Flatbed
- Tanker
- Intermodal chassis containers (pooled and owned)
- Heavy/Bulk hauler
- Auto carriers

- Moving
- Utility⁵
- Special hauler (e.g., Hopper, Livestock, and other specialized carriers)

The percentages specified can be approximate, based on vehicle populations. The percentages for each fleet must sum to 100%.

Once you are sure your information is input correctly, you may select the

CREATE FLEET(S)

button near bottom of the page.

If, at a point later in the data entry process, you realize that you need to add a new fleet or delete an existing fleet, you can return to the **Identify Fleets** screen. To add a new fleet, follow all of the instructions on the screen regarding defining your fleets, including selecting the

CREATE FLEET(S)

button. When you select this button, the system will create blank data entry forms only for the new fleet(s) you have added; the existing fleets will not be affected.

If you need to delete an existing fleet, simply select the box next to the fleet and then select the

X Delete Checked Rows

button. Note that, if you have already generated data entry forms for the fleet you are deleting, the system will prompt you to confirm the deletion.

*If you choose to delete a component fleet, and if you have allocated any activity to this fleet to the composite multi-modal fleets (defined under Step 6 on the **Home** screen) then you must re-allocate your composite fleet activity to reflect this change. Similarly, adding a new component fleet may require modifying your composite fleet activity allocations under Step 6 as well.*

As on the other screens there is a **HELP** button as well as an **ADD COMMENTS** button. Selecting **HOME** will take you back to the **Home** screen (see **Figure 24**). At this point you may define another component fleet following the same process, or proceed to Step 4 on the **Home** screen.

Data Requirements for Business Unit Characterization Screen (Logistics Components Only)

For each Logistics business unit you will need to specify the percent of total activity associated with the different Business Unit Focus categories, listed below.

- **Logistics Provider:** Logistics providers are non-asset based third parties that provide multiple, bundled logistics services. They may be involved in material management, transportation management, inbound and outbound freight, inventory management, 4PL activities, warehousing, cross dock, kitting, packaging, and sub assembly processes.

⁵ The utility category encompasses class 2b to 8b vehicles that do not carry typical commercial freight. Examples include garbage, recycle, service, work, dump, landscape, cement, bucket, boom, ambulance, armored, fire, farm, wrecker and other similar trucks. Because these trucks do not carry traditional freight payload, the user should self-define their payloads so as to make the emissions per payload efficiency useful to the user. SmartWay will not use the emissions per payload results for the utility category. Users may experience yellow or red warning labels on the Activity screen due to the unique nature of utility “payload.” In the case of red alerts, simply input text defining your special conditions in the required text boxes that appear.

- **Freight Forwarder:** Freight forwarders are documentation specialists and consolidators of freight such as LTL (less than truckload) and LCL (less than container load). Freight forwarders normally provide pickup and delivery for domestic and international shipments, and provide the property transportation for a compensation or fee basis.
- **Freight Broker:** A freight broker buys and sells transportation services and normally works on behalf of a carrier or shipper.
- **Truck Carrier:** Truck carriers operate their own managed fleet (owned or leased). These fleets can be for-hire or private/dedicated. Refer to “Choosing the Right Tool for your Business Units” in Part I of this guide to determine if you should complete the SmartWay Truck Tool for the Truck Carrier portion of your operations.
- **Rail Freight Broker:** Freight broker specializing in rail mode services.

Data Requirements for Other Components (Air, Barge, and Rail Modes)

The Air, Barge, and Rail component tools require similar information to identify and characterize individual fleets. The Air component requests information on:

- Fleet Type (dedicated freight, mixed operations, or passenger).
- Service area (international, national, or regional).
- Revenue category (large <\$1B/yr; medium \$100M - \$1B/yr; small \$20M - \$100M/yr; and micro < \$20M/yr).
- Number of aircraft.

The Barge component requests:

- Fleet Type (open water or river barge).
- Number of barges.
- Number of tugs.
- Annual tons of cargo shipped by commodity type.

The Rail component requests:

- Class of the fleet (1, 2, or 3).

Please use Worksheet #2 in Appendix A of this document to help you prepare your company’s component fleet information.

SECTION 4: DOWNLOAD LATEST SMARTWAY CARRIER DATA FILE

To ensure that the Multi-modal Tool gives you the most current list of SmartWay carriers to select from, you must click the **Download Latest SmartWay Carrier Data File** button on the **Home** screen. A new box will appear next to the button indicating the “Date of Current Carrier File.” You are now ready to select carriers and enter activity data for each fleet.

You will not be able to input the required logistics fleet data in Step 5 without this file. You must have an active Internet connection to perform this step.

SECTION 5: DATA ENTRY FOR FLEETS

Select Component Fleet for Data Entry

On the **Home** screen, you will now see all the fleets you created listed in the window below item # 5: **Select Component Fleet for Data Entry**.

There will be a status message after each fleet, indicating whether or not the data entry for that fleet is complete. The following information may appear beside a fleet name:

- **Not checked** - Data has not been entered yet.
- **Incomplete** - Some data is still missing and/or inconsistent.
- **Complete** - All data requirements have been met and validation has occurred.

In addition to the status indicators above, you may also see one of two qualifiers: “Errors” or “Warnings.”

- **Errors** will prevent you from defining your composite fleet under Step 6, and must be addressed before you can submit your Tool to EPA.
- **Warnings** will still allow you to proceed and submit your data to EPA. However, it is strongly recommended that you carefully review each warning message before sending your data to EPA so that you can anticipate questions that may come from a Partner Account Manager as a result of your data being outside the expected ranges. The method addressing errors and warnings is described for subsequent input screens in the following sections.

To add data to a particular fleet file, highlight the fleet name and then double-click. You will then proceed to the Tool **Data Entry Screens**.

SECTION 5 DATA ENTRY: ENTER FUEL AND/OR ACTIVITY INFORMATION FOR EACH OF YOUR COMPONENT FLEETS

PLEASE REFER TO THE TRUCK, LOGISTICS, BARGE, RAIL, AND AIR TOOL USER GUIDES FOR DETAILED INSTRUCTIONS REGARDING DATA ENTRY FOR YOUR COMPONENT FLEETS.

SECTION 6 DATA ENTRY: DEFINE YOUR COMPOSITE FLEETS

Now that you have identified and characterized your component fleets, you will be asked to provide information for EACH composite fleet. In this section, you will be asked to allocate component fleet miles and ton-miles across the different composite fleets.

The “**Define Your Composite Fleet**” section of the Tool has three subsections:

1. Identify Composite Fleets
2. Allocate Component Fleets
3. Composite Fleet Details


The requirements for each subsection are described below.

Once you have entered data for all of your component fleets, and resolved any error notifications, you may proceed to Step 6, [Define Your Composite Fleets](#). This step allows you to group your component fleets into larger, *composite fleets* operating across one or more modes. Composite fleets are entities that your customers can hire to move their freight. For example you may have a Truckload Division and an Intermodal Division for hire.

Identify Composite Fleets

First, enter the name of your composite fleets on the first screen, [Identify Composite Fleets](#). Names include your Partner Name combined with your Composite Fleet Identifier. Remember to enter your composite fleet names exactly as you want them to be seen on the SmartWay website.

Note: Your company’s name and your composite fleet(s) will be listed on the SmartWay website to indicate your participation in the SmartWay Transport Partnership. Your shipper and logistics customers can also use the SmartWay Online Database to search for your company by the name you submit in the Tool, your SCAC, Motor Carrier Number, DOT Number, and/or NSC. Therefore, it is critical that you identify your company and composite fleet(s) in the Tool as you would have them appear on the SmartWay website and within other SmartWay Tools.

You may add more fleets by selecting the  button. To proceed to the

next screen, select the [Allocate Component Fleets](#) tab or select



Please use Worksheet #3A in Appendix A of this document to help you prepare your company’s composite fleet information.

Allocate Component Fleets

Proceed to the **Allocate Component Fleets** screen to see a list all of the component fleets you defined under Step 3 (**Define Your Component Fleets**). All of the miles and ton-miles associated with each of these fleets must be assigned across one or more of the composite fleets you defined on the previous screen. You must allocate component fleet activity based on the percentage of total miles and total ton-miles attributable to each composite fleet. The total miles and ton-miles listed for each component fleet is automatically calculated from Step 5 where you entered the activity data for your component fleets. (Note that Total Miles refers to truckload miles for the Truck mode, railcar-miles for the Rail mode, barge-miles for the Barge mode, and aircraft miles for the Air mode.)

Note that the percentage allocations must sum to 100 for each component fleet. In addition, if you enter a non-zero percentage for a particular total miles assignment, and zero percent for the corresponding ton-mile assignment (or vice versa), the Tool will display an error and you will not be allowed to proceed until reconciling the discrepancy.

The **Show Allocations** button located below the component fleet list allows you to view a summary of your composite fleet percentage allocations across all of your different component fleets, in order to confirm the accuracy of your assignments.

The **VALIDATE SCREEN** button will validate the information you enter on this screen. The ratio of total allocated ton-miles to total miles is checked for each composite fleet. If any of these ratios differ from industry average payload standards, you will receive a warning message. These warning messages are intended to flag possible data entry errors; however these warning messages will not prevent you from submitting your completed Multi-modal Carrier Tool to EPA.⁶


Please refer to **Appendix A** of the Data Entry and Troubleshooting Guide for a description of the procedure used to calculate the gram per mile and gram per ton-mile performance metrics for composite fleets.

Select the **Return to Entry Form** button to leave the spreadsheet and return to the allocation screen.

Composite Fleet Details

First proceed by entering the SCAC, MCN, DOT, and NSC values for each composite fleet if available. Separate multiple values by a comma if necessary. These values are not mandatory but will assist Shippers and Logistics Companies in identifying your fleets. For each composite fleet, enter the percentage of operations that occur in the United States and Canada.

⁶ Validation warnings are issued for low payloads if the average payload for a composite fleet is < 14.5 tons (based on the out of range warning for Class 8b TL/Dry Vans – see Truck Tool Technical Documentation for details). Warnings are issued at the high end if the average composite fleet payloads are > 60 tons. This value was chosen based on the distribution of payloads reported by Multi-modal Partners in 2012, with approximately two thirds of Partners having payloads less than this cutoff.

Once you have allocated all of your component fleets across the composite fleets, select the  button to return to the [Home](#) screen.

Please use Worksheet #3B in Appendix A of this document to help you allocate your composite fleet activity.

Appendix A: Worksheets for Data Collection

List of Worksheets

<u>WORKSHEET #1: COMPANY AND CONTACT INFORMATION</u>	26
<u>WORKSHEET #2: COMPONENT FLEET CHARACTERIZATION</u>	27
<u>WORKSHEET #3A: IDENTIFY COMPOSITE FLEETS AND COMPOSITE FLEET DETAILS</u>	28
<u>WORKSHEET #3B: ALLOCATE COMPONENT FLEETS</u>	29

Worksheet #1: Company and Contact Information

#1. ENTER YOUR CONTACT INFORMATION:

General Company Contact Information

Company Name							
Headquarters Mailing Address							
City		State/Province		Zip		Country	
Main Phone Number		Toll-free Number		Cell number		Web Address	

Working Contact Information

Working Contact Name							
Working Contact Mailing Address							
City		State/Province		Zip		Country	
Working Contact Phone Number				Email Address			

Executive Contact Information

Executive Contact Name							
Executive Contact Mailing Address							
City		State/Province		Zip		Country	
Executive Contact Phone Number				Email Address			

Other Contact Information

Other Contact Name							
Other Contact Mailing Address							
City		State/Province		Zip		Country	
Other Contact Phone Number				Email Address			
Contact's role in program							

Worksheet #2: Component Fleet Characterization

Complete this worksheet for each component truck and/or logistics fleet you will be submitting in the Multi-modal Carrier Tool.⁷

#2: Define your Fleets

Partner Name and Fleet Identifier

SCAC: _____ MCN: _____ DOT#: _____ NSC: _____

FLEET TYPE: _____ 95% Control* _____

Operation Percentages (must sum to 100):

Truckload _____ LTL _____ Drayage _____ Package Delivery _____ Expedited _____

Body Type Percentages (must sum to 100):

Dry Van _____ Reefer _____ Flatbed _____ Tanker _____ Chassis _____ Heavy Bulk _____
Auto Carrier _____ Moving _____ Utility _____ Special Hauler _____

If Special Hauler is selected, please describe type:

Business Unit Characterization Percentages (Logistics Only):

Logistics Provider _____ Freight Forwarder _____ Freight Broker _____ Truck Carrier _____
Rail Freight Broker _____

* Applicable for Truck fleets, not Logistics fleets

⁷ Component Rail fleets only require Partner Name, Fleet Identifier and Rail Class (1, 2, or 3).

Worksheet #3A: Identify Composite Fleets and Composite Fleet Details

Complete the following for each composite fleet you will be submitting in the Multi-modal Carrier Tool.

#3A: Define Your Composite Fleets

Company Name / Component Fleet Identifier

SCAC: _____

Motor Carrier Number: _____

DOT Number: _____

NSC: _____

Percent US Operation: _____

Percent Canadian Operation: _____

Worksheet #3B: Allocate Component Fleets

Complete the following table for each component fleet you will be assigning to the composite fleets listed in Worksheet 3A.

#3B: Allocate Your Component Fleets

List each composite fleet identified in Worksheet 3A. Add lines to the table below or copy the table multiple times if necessary.

“% Miles” and “% Ton-Miles” columns must each sum to exactly 100% for each component fleet.

	Composite Fleet Name	% Miles	% Ton-Miles
1			
2			
3			
4			
5			
6			
7			
8			
9			
10			
11			
12			
13			
14			
15			
16			
17			
18			
19			
20			