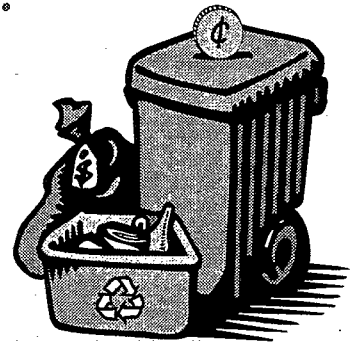




A Listing of Pay-As-You-Throw News and Events

PAYT



PAYT Video Covers Key Issues

*"I wish such a tool had been around
when we were designing our program.
It would have been very helpful to us!"*

— Ellen Ryan, city official, San Jose, California

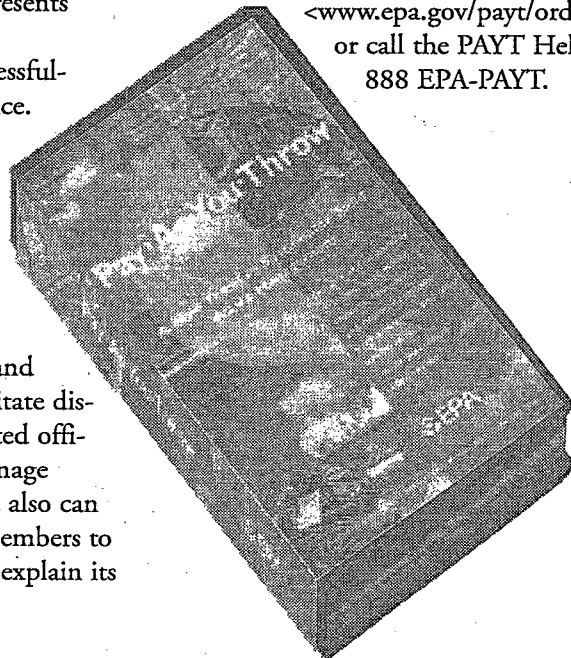
Do you have questions about how to implement a pay-as-you-throw (PAYT) program in your community? Look no further for many useful answers. EPA's new video provides a wealth of information on PAYT for residents, city officials, and other community members. The video presents useful insights in the words of local practitioners—those that have successfully gone through the PAYT experience.

The video is organized into two modules—one more technical than the other—which allows the video to speak to the diverse stakeholders involved in PAYT program design. The first module is a 15-minute overview describing what PAYT is and how it works. It is designed to facilitate discussions between planners and elected officials about how PAYT can help manage municipal solid waste. This module also can be used to introduce community members to the unit-based pricing concept and explain its benefits.

The second module runs for an hour and provides the viewer with information on the "nuts and bolts" of PAYT. It is divided into four parts—Getting Started, Operations, Economics and Rate Structure Design, and Program Results—each of which can stand alone as its own instructional unit. This module is geared for solid waste planners and covers community outreach strategies, illegal dumping, multifamily units, and setting a rate for your program.

Both modules present the experience of dozens of planners, elected officials, residents, and researchers from PAYT communities across the country and answer both basic and detailed questions about unit-based pricing. To order a free copy of this informative video, fax or mail in the order form found in this bulletin, order online at

<www.epa.gov/payt/order.htm>,
or call the PAYT Helpline at
888 EPA-PAYT.



HELP GET THE WORD OUT...AND PREVENT WASTE!

If you know someone who would like to receive their own copy of the PAYT Bulletin and other valuable PAYT information, please contact our Helpline at 888 EPA-PAYT, and leave all pertinent mailing information. A call to the Helpline also can remove a name from the mailing list. If you do not want to receive PAYT information anymore, please call the toll free number and ask that your name be deleted from the database.

THE FACES OF PAYT: QU



**Ellen Ryan,
City Official
San Jose, CA**

"The success of this program can be attributed to the residents. They have embraced it. The people have really been the champions."



**Richard Neale,
Resident
Loveland, CO**

"After the number of years our city has been involved with it, I 100 percent support it. I think it is the only way for an informed and educated community to go."



Number of communities with PAYT

☐ 0

☐ 1-25

☐ 26-100

☐ 101-200

☒ 200+



**Louis Pelligrini,
Hauler
San Jose, CA**

"Almost every weekend we were set up with our local neighborhood groups, shopping center, how-to fairs. Extensive public information went into this program prior to start-up."

OTES FROM THE VIDEO



**Richard Denison, Ph.D.,
Environmental Defense
Fund
Washington, DC**

"The really great thing about PAYT is that it aligns economic and environmental priorities so they are working to support each other."

**Estelle Sherman,
City Official
Woodstown, NJ**

"Trash is not a mindless thing anymore. Before, you just threw it away and it disappeared."



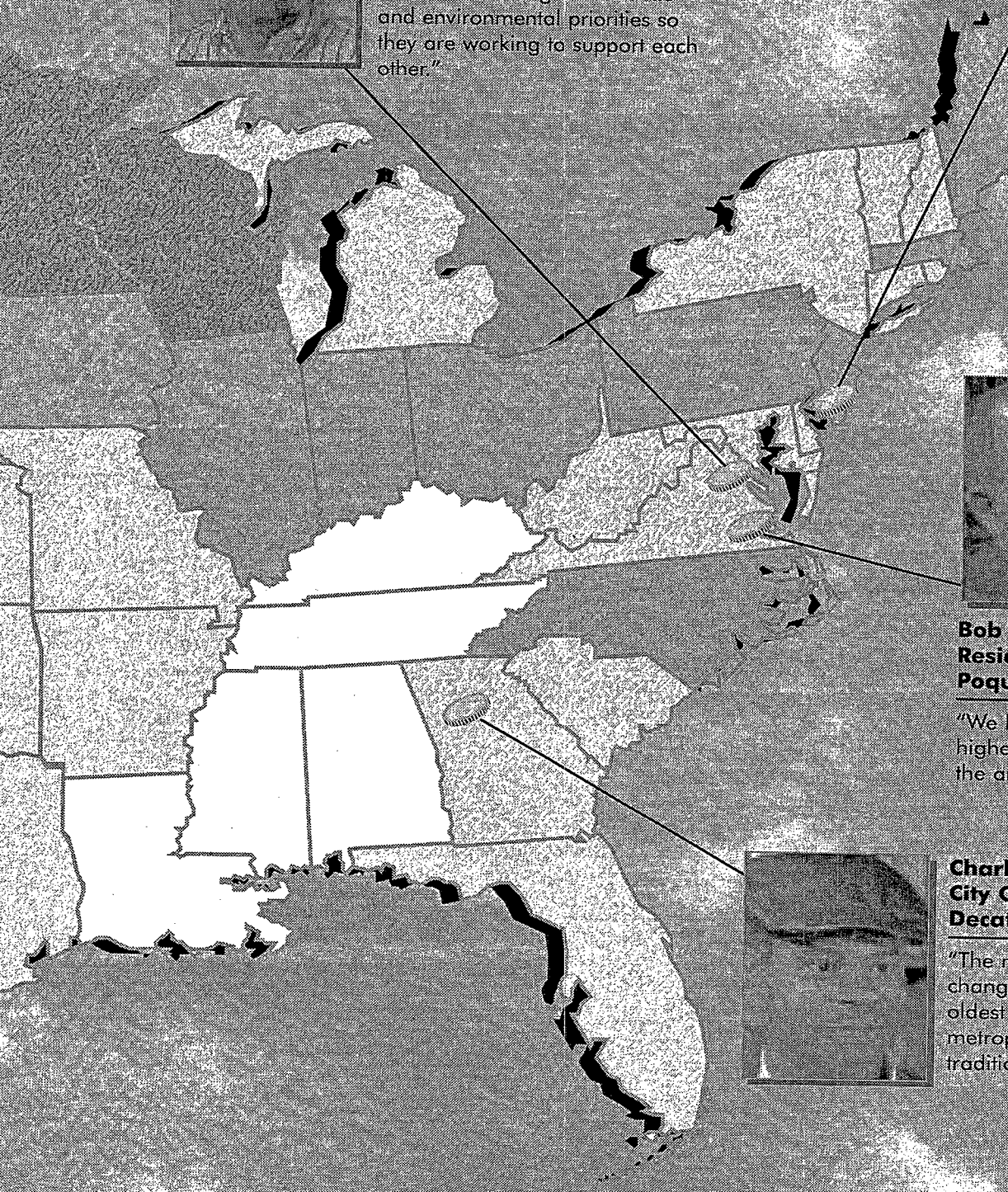
**Bob Kerlinger,
Resident
Poquoson, VA**

"We have, by far, the highest recycling rate in the area."



**Charles Hammonds,
City Official
Decatur, GA**

"The major obstacle is sheer change. Decatur is one of the oldest communities in the metropolitan area and it has a tradition of being traditional."



RESOURCES

New and Improved PAYT Web Site

Pay-As-You-Throw Online <www.epa.gov/payt> has a new look and new information to go along with it. Surfers can browse a list of PAYT links, and obtain the updated list of cities and towns in the United States using PAYT. Other added features include the fall issue of the *PAYT Bulletin*, a site map, and an order form for PAYT publications and tools.

Coming Soon: Help with Rates

Determining a rate for your PAYT program can be a challenge. A rate that is too high can cause community dissent, while a rate that is too low could create financial problems. *Rate Structure Design: Setting Rates for a Pay-As-You-Throw Program* is a new EPA handbook created to help local officials and others design a rate to strike the necessary balance. This publication will help you understand and work through the different approaches to developing a pricing structure for your PAYT program. Look to the next *PAYT Bulletin* for information on how to order this valuable tool

Source Reduction Planning Tools Available

EPA's new manual, *Source Reduction Program Potential Manual: A Planning Tool*, and its companion software *ReduceIt* (EPA530-E-97-001) are now available from the RCRA Helpline at 800 424-9346. You also can download these tools from EPA's Office of Solid Waste Web site at <www.epa.gov/epaoswer/non-w/reduce/reduceit/index.htm>.

The manual and software are designed to help solid waste managers evaluate the potential impact of various source reduction options on local solid waste programs. The manual allows users to calculate the potential of three residential programs (grasscycling, home composting, clothing reuse) and three commercial or industrial source reduction programs (office paper reduction, converting to multiuse pallets, paper towel reduction). The manual also provides worksheets and explains how managers can apply their own waste data to develop local estimates. The interactive *ReduceIt* software, a Windows-based (3.1 or later) application, offers an easy-to-use electronic version of the worksheets provided in the manual. These tools also guide users through steps to help estimate cost savings associated with implementing these source reduction programs.

Any questions regarding the use of these tools can be resolved by phoning EPA's toll free message center at 888 249-8883.



U.S. Environmental Protection Agency
Canterbury (5306W)
Washington, DC 20460

Official Business, Penalty for Private Use \$300

FIRST-CLASS MAIL
POSTAGE & FEES PAID
EPA
PERMIT NO. G-35