

Superfund Emergency Response Actions

A Summary of Federally Funded
Removals Volume 3

Office of Solid Waste and Emergency Response

NOTICE

This document has been reviewed by the U.S. Environmental Protection Agency and approved for publication. Any trade names or commercial products mentioned are only examples and are not endorsed or recommended by the U.S. Environmental Protection Agency.

SUPERFUND EMERGENCY RESPONSE ACTIONS

Volume III

The Superfund removal program has achieved significant accomplishments in cleaning up hazardous waste sites and responding to environmental emergencies. For this reason, EPA publishes the Superfund Emergency Response Actions summary, which provides the public with valuable information about Superfund removal actions undertaken by EPA. This document is updated annually. Volume III, the second update to the initial document, summarizes the Superfund removal actions undertaken by EPA between October 1987 and September 1988, or Fiscal Year 1988.

Jonathon Z. Cannon
Acting Assistant Administrator
Office of Solid Waste and Emergency Response

TABLE OF CONTENTS

	Page No.
Introduction to the Superfund..... Removal Program	1
User's Guide	6
Regional Removal Summaries	9
Region I.....	9
Region II.....	17
Region III.....	25
Region IV	37
Region V	49
Region VI	57
Region VII	63
Region VIII	69
Region IX	75
Region X	81
Index of Historical Removal	85
Actions	

THE SUPERFUND REMOVAL PROGRAM

In response to increasing national hazardous waste disposal problems, in 1980 Congress passed the Comprehensive Environmental Response, Compensation, and Liability Act (CERCLA), commonly known as Superfund. Superfund authorizes the Federal Government to work with State and local governments and private parties to provide responses to accidental releases of hazardous substances and inactive hazardous waste sites.

Superfund cleanups were financed by a \$1.6 billion Trust Fund collected over the first five-year period of the program. The Fund was collected through taxes paid by manufacturers, producers, and exporters and importers of oil and designated chemical substances. It can be used to provide both short-term actions and long-term cleanup, with the latter generally undertaken only at inactive waste sites listed on the National Priorities List (NPL). Short-term actions, including emergency responses, occur in response to hazardous substance releases both at sites on the NPL and sites that are not on the NPL (non-NPL sites). During the sixth year of the program, Congress appropriated funds so that short-term actions could continue while the law was being reauthorized.

On October 17, 1986, the Superfund Amendments and Reauthorization Act (SARA) was enacted. SARA reauthorized Superfund for five more years and provided for a Fund of \$8.5 billion. The new Superfund raised the limits on removal actions from six months to

12 months and from \$1 million to \$2 million. These statutory limitations may be exceeded if site conditions meet one of the two CERCLA exemptions. The "emergency" exemption permits a waiver to the limitations if: 1) there is an immediate risk to public health, welfare or the environment, 2) continued response actions are immediately required to prevent, limit or mitigate an emergency or 3) assistance will not otherwise be provided on a timely basis. The second exemption, referred to as the "consistency" exemption, was enacted under the new Superfund law and permits a waiver to the limitations where a continued response action is otherwise appropriate and consistent with remedial action to be taken. In addition, removal actions, to the maximum extent possible, must contribute to the efficient performance of long-term remedial actions.

The National Contingency Plan (NCP) details the responsibilities of 14 Federal agencies and State and local governments for cleaning up releases of hazardous substances and oil spills to all media: land, air, surface water, and groundwater. The lead responsibility for emergencies occurring inland or in inland waters belongs to the U.S. Environmental Protection Agency (EPA). Primary responsibility for addressing accidental releases in or near coastal waters and the Great Lakes rests with the U.S. Coast Guard (USCG). Although other Federal agencies, such as the Federal Emergency Management Agency and the Agency for Toxic Substances and Disease Registry, do not lead Fund-financed actions, they provide assistance as necessary. In addition, special technical assistance teams

and cleanup contractors provide significant support to removal actions.

The Superfund removal program, which manages the short-term actions and emergency responses, is characterized by close cooperation among Federal, State, and local government agencies and between government and industry. Approximately 90 percent of all removals, including emergency responses, are conducted by the responsible party (e.g., generator, transporter, or disposer). For the remaining ten percent, EPA either leads the cleanup, with support and assistance from industry, the Coast Guard, other Federal agencies, and State and local agencies, or assists State and local agencies in managing the response. EPA maintains a technical team on call 24 hours a day to respond to emergencies.

Although emergency responses, whether undertaken by EPA or USCG, must be flexible and tailored to the specific needs of each site or release of hazardous substances, some types of response activities are common to many removal actions. Some of these typical activities are noted below:

- Sampling drums, storage tanks, lagoons, surface water, groundwater, and the surrounding soil and air
- Installing security fencing and providing other security measures
- Removing and disposing of containers and contaminated debris

- Excavating contaminated soils and debris and restoring the site
- Pumping out the contaminated liquids from overflowing lagoons
- Collecting contaminants through drainage systems or skimming devices.

Other activities might include provision of alternate water supplies, installation of decontamination devices, and temporary evacuation of, and provision of housing for threatened individuals.

Occasionally unforeseen circumstances, such as adverse weather conditions, vandalism, fire, or explosion arise and a "restart" is necessary. A restart is the initiation of additional removal activities at a site where there has been a previously completed removal. Twenty-five sites included in the original summary required restarts between October 1, 1987 and September 30, 1988. This update describes only the actions undertaken by EPA at these sites during this period.

Potential and actual releases of hazardous substances are extremely variable in size, threat, and location. Superfund is available for all situations meeting CERCLA and NCP criteria no matter how large or small. Actions under the removal program can range from erecting a fence to removing and disposing of thousands of drums.

From October 1, 1987 through September 30, 1988, EPA Regions performed many technologically or logistically complex responses or

used state-of-the-art technologies. Some examples of these removal actions are provided below.

- Nyanza Chemical

This removal action targeted a 39'x77'x8' inground concrete vault (or settling basin) which had been abandoned in 1974-1979 (EPA Region I). The vault used to be open to the air and was used as a settling basin for textile dye manufacturing wastes. The vault contained product when it was buried in 1974-1979 under 2-4 feet of fill. Product leached from the vault over the last 10-15 years and contaminated a 5500-6000 square foot area downgradient of the vault. The principal organic contaminants and their concentrations are listed below:

Nitrobenzene: 1200-9400 ppm
1,2,4 trichlorobenzene: 490-7500 ppm.

From 10/05/87 thru 12/12/87 a mobile 20 ton/day rotary kiln incinerator operation processed approximately 600 tons of contaminated soils. This incinerator passed the 99.99% Destruction Removal Efficiency (DRE) requirements, the particulate, and the hydrochloric acid stack gas limitations. The chemical sludges in the vault were not incinerated because of their high moisture content. The materials handling required to prepare the wet sludges would have required a large expenditure of funds and would have prohibited a timely completion of the project. Therefore this sludge was stabilized onsite and then shipped to a RCRA approved landfill.

- American Steel Drum

On December 7, 1987, the United States Environmental Protection Agency, Region V, initiated a removal action at the American Steel Drum Site in Bedford, Ohio. The building was decontaminated during a previous removal action and soils surrounding the facility, two incinerators, and sludge in an underflow dam area remained contaminated with a variety of organic and inorganic constituents including polychlorinated biphenyls (PCBs) and lead. These materials posed threats through direct contact, inhalation of airborne contaminants, and off-site migration through storm sewers and surface water.

The removal action involved the excavation and disposal of 3992 tons of soil contaminated with less than 50 ppm PCBs and other organic and inorganic contaminants and one drum of soil containing greater than 50 ppm PCBs at Stet hazardous waste landfill. Additionally, two incinerators were demolished and disposed of at a hazardous waste landfill. A total of 9,850 gallons of contaminated water was generated during soil excavation activities and sent to a treatment facility for disposal. A total of 193 tons of contaminated sludge in an underflow dam area was excavated, solidified and disposed of at a hazardous waste landfill. Post excavation sampling was conducted to determine the effectiveness of the removal. Subsequently, the site was backfilled with a clayey soil. The removal was completed June 10, 1988, at a cost of \$1,036,621.

- Mountain Pine Pressure Treating Site

The Mountain Pine Pressure Treating site (EPA Region VI), an inactive wood preserving facility, is located in 96 acres in Plainview, Arkansas. The facility pressure treated structural timber with solutions of pentachlorophenol (PCP) and chromated copper arsenate (CCA). Two distinct plants, Mountain Pine Pressure Treating Company and Plainview Lumber Company, were operated by the same individuals on contiguous property, and are considered one site by EPA.

The site is located near the center of Plainview and surrounded by residences and stores. A drainage ditch originates at the north end of the site and extends southerly across the site into Porter Creek which flows into Lake Nimrod, the water supply for Plainview and surrounding area. The site features included a 1.4 million gallon PCP recovery pond, wastewater evaporation pond (2 million gallon capacity), the older PCP plant, the CCA plant and CCA containments and sump.

The treating fluid and water from the pressure chambers were drained into the recovery pond where the treating fluid was recovered. Excess water was pumped from the PCP pond to the evaporation pond and recycled through a spray evaporator.

Approximately 8,000 gallons of PCP treating fluid was contained in several tanks in the PCP plant. Thirty-five sacks of raw PCP were found inside the plant structure. The soil in

the immediate plant area was saturated with the oily PCP fluid.

The CCA plant had three tanks of spent CCA treating fluid. The tanks had a secondary containment which was filled with accumulated contaminated rainwater. A containment surrounded the CCA pressure treating chamber and was connected to a sump inside the plant structure. The total volume of accumulated rainwater in the containments and sumps was approximately 80,000 gallons.

On November 20, 1987, EPA's Emergency Response Branch (ERB) was notified of the potential threat from the overfilled PCP recovery pond. On November 27, 1987, a site assessment was performed and confirmed that the pond had overflowed into the drainage ditch. The primary threats posed were direct contact hazards and surface run-off of contaminants from the PCP recovery pond. Lab analysis showed a PCP concentration of 1.89 parts per million (ppm) and arsenic concentration of 3.4 ppm in the pond water. A layer of oil floating on the top had a PCP concentration of 1200 ppm. Only 2 inches of freeboard remained and the water pressure threatened the integrity of the earthen dikes.

The evaporation pond had approximately 3 feet of freeboard and analysis showed nondetectable levels of PCP and 0.778 parts per billion (ppb) of arsenic.

The tanks in the PCP plant contained treating fluids with concentration of PCP up to 7 percent. The soils in and around the plant had

PCP concentrations up to 3700 ppm, and were saturated with the treating fluid.

The CCA plant containments and sump had arsenic concentrations of 8 ppm. No freeboard was available in the containments and they had overflowed. The tanks contained spent CCA treating fluids with copper, chromium and arsenic concentrations of 5 to 10 percent.

The Regional Administrator granted verbal approval on December 10, 1987 for an Emergency Response Clean-up, and EPA/ERB mobilized and began the action the next day.

The oil layer was skimmed off the PCP Recovery Pond using booms and secured in drums. The water was treated by spraying alum and ferric sulfate flocculents into the water to precipitate the metals. The metals precipitated out into the sludge and reduced the concentrations of arsenic, copper and chromium to a level which met the discharge standards established by the Arkansas Department of Pollution Control and Ecology (ADPC&E). The pond water was pumped through sand filter/carbon absorption units to remove the PCP. The effluent was discharged into a holding pond until sample analysis confirmed the PCP removal.

During the pumpdown, the PCP recovery pond water required a second application of the flocculents due to the metals resolubilizing. Water from the CCA plant containments and sump was transferred and treated at that

time. Based on flowrates, 1,415,550 gallons of water from the pond and 80,000 gallons from the CCA plant were treated and released through the carbon units.

After the water was removed from the PCP recovery pond, the sludge was solidified. Kiln dust and rice hulls were used to solidify approximately 6,000 cubic yards of sludge. The oil which had been skimmed off the pond was solidified and added to the sludge. The solidified sludge was compacted into the north end of the pond and capped with visqueen and 2 to 3 feet of barrowed clay. The capped area was brought to a stable grade and revegetated.

The treating fluids from the tanks in the PCP plant were added to the sludge from the PCP recovery pond, and solidified with kiln dust and rice hulls. The saturated soils were removed from the plant area, and combined with the solidified sludge. The area was capped with 2 to 3 feet of clean clay.

The sacks of raw PCP contained dioxin concentrations up to 6.93 ppm. The dioxin concentration did not allow for off-site disposal. The sacks and pallet were placed inside one of the pressure chambers and sealed and posted with warning signs.

The contaminated water from the CCA Plant tanks, containments and sump was transferred to the PCP recovery pond. The water was then retreated and released.

Efforts were made to treat the tank fluids similarly to the pond waters, but the small size and weak bonding of the particulate and large surface area relative to the volume hampered the effectiveness of the process. Flocculation treatments yielded a reduced arsenic concentration of 30 ppb, but when the water was transferred the arsenic resolidified to above the 50 ppb release criteria. The metals were put back in solution, and the fluids were transported to Disposal Systems, Inc. for deepwell injection.

As a result of the action, 4,011,550 gallons of contaminated water were treated and released; 6,000 cubic yards of sludge and 5,000 cubic yards of contaminated soil were solidified and capped; and 30,000 gallons of CCA treating fluid were disposed of by off-site deepwell injection. The immediate threat from the overflow of the PCP recovery pond was eliminated by the treatment of the water, and closing of the pond. The imminent and substantial threats of direct contact, and the migration of contaminants into the Lake Nimrod waters were mitigated by the actions taken on the evaporation pond, saturated soils, and CCA fluids. The action was completed on April 16, 1988.

- Baldwin Park

This site (EPA Region VII) is a 170-acre tract of land on which the Northeastern Pharmaceutical and Chemical Company dumped filter cake wastes from their hexachlorophene process. High concentrations of dioxin were discovered near a trench and in a dump on site.

The two contaminated areas were fenced and the earth was excavated, guided by new dioxin levels established by Region VII and the Agency for Toxic Substance and Disease Registry (ATSDR). ATSDR is a Federal agency that studies and monitors illnesses caused by toxic substances. Between 150 and 200 cubic yards of soil with over 20 parts per billion concentration of dioxin were transported to a mobile incinerator established at another site, named Denney Farm:

The Denney Farm incinerator is the only facility in history that has been licensed to treat dioxin. A high temperature rotary kiln incinerator, the unit converts dioxin tainted soil into water, carbon dioxide, and ash that has only minimal levels of dioxin. The treated ash was tested and then disposed of in a landfill.

The excavated sites at Baldwin Park were capped to contain the remaining low level contaminated soil and seeded to establish a cover of vegetation. The cost of this removal action, not including incineration, was \$140,000.

- Poly-Carb Incorporated

On May 27, 1985 between 7200 and 9000 gallons of a phenol and cresol solution spilled from a holding tank at Poly-Carb Inc., a former waste conversion facility located in Wells, Nevada (EPA Region IX). Roughly 300 cubic yards of soil were contaminated. A serious threat was posed to groundwater primarily because of the shallow aquifer underlying the site. The Town of Wells relies entirely on groundwater for its water supply. Both

municipal wells were approximately two miles downgradient from the site. Operations were recently abandoned, and the risk of exposure to the public and grazing livestock was also a concern.

To devise the best approach for on-site treatment, EPA's Environmental Response Team performed several treatability studies. Three innovative treatment methods were tested: passive evaporation, soil washing, and biological degradation. Due to high temperatures and dry and windy weather conditions, the treatment chosen was a combination of the passive evaporation and soil washing methods. This dual treatment procedure proved to be both innovative and cost effective.

Treatment began in June 1987. Contaminants were washed out of the soil in a lined treatment area and removed with activated carbon. Wells were installed to serve the dual function of groundwater monitoring and water supply for the treatment area. Soil and water samples were collected periodically to monitor the operation of the system. Initial samples indicated phenol and cresol levels at 2300 ppm and 1480 ppm, respectively.

In Aug. 1988, EPA terminated and dismantled the treatment system after contaminants had been effectively reduced to below 1 ppm. A total of thirty drums of contaminated carbon were transported to Rollins Environmental Services, Inc., Deer Park, Texas for thermal treatment and incineration. The final cost of the removal was \$475,000.

From Dec. 1980 through Sept. 1987, EPA completed 776 removal actions at a cost of \$156,892,190. From Oct. 1987 through Sept. 1988, EPA completed 219 removal actions, more than in any other single year of the Superfund program. An additional \$91 million was spent on FY 88 removal actions that were completed. Total Superfund removal completions and associated costs for the period 12/11/80 to 09/30/88 are as follows:

TOTAL COMPLETIONS

NPL* SITES	192
NON-NPL SITES	<u>803</u>
TOTAL	995

TOTAL COSTS

NPL* SITES	\$90,779,443
NON-NPL SITES	<u>\$158,250,654</u>
TOTAL**	\$249,030,097

* National Priorities List (NPL) - List of nationwide priority hazardous waste sites requiring comprehensive, long-time actions under Superfund.

** Does not include funds for sites where removal activities were ongoing as of 09/30/88.

USER'S GUIDE

Volume III summarizes short-term removal activities completed during the eighth year of the Superfund program. This document is presented as a series of matrices that are organized numerically by Region and alphabetically by State and site name within each Region. It contains the same types of information included in Volume I and II.

EPA intends to continue providing this information in future updates.

Inquiries regarding information contained in this document should be referred to the appropriate EPA Regional office. A list of EPA contacts and a map delineating the States within each Region are provided in this report. In addition, this document includes a listing of sites found in Volumes I and II. These sites are listed alphabetically by State within their respective Regions. In the back of the report, there is also an alphabetical index of all sites in Volumes I, II, and III.

Much of the work EPA and the USCG undertake in response to releases of hazardous substances is highly technical. Definitions of the information provided in the matrices that follow are presented below.

Key to FY88 Superfund Emergency Response Actions Data

1. REGION: EPA Regions 01, 02, 03, 04, 05, 06, 07, 08, 09, 10
2. NAME/LOCATION: Site name and local jurisdiction
3. STATE: Standard State abbreviation
4. NPL STATUS: (Y) Yes - on proposed or final NPL when action started
(N) No - not on proposed or final NPL when action started
5. COST: These are extramural costs, which include cleanup contractor costs.
6. Start and Completion Dates
7. INCIDENT CATEGORY:
 - Active Production Facility - any ongoing operation which manufactures, recycles, handles, stores or transports hazardous materials or waste as a primary ingredient, product or by-product of operations, or any location contaminated due to off-site migration of hazardous materials or wastes from such ongoing operations.
 - Inactive Production Facility - any facility no longer in operation which manufactured, recycled, handled, stored or transported hazardous materials or wastes as a primary ingredient, product or by-product of operations, or any location contaminated due to off-site migration of hazardous materials or wastes from such previous operations.
- Active Waste Management Facility - any ongoing legal or illegal operation or site whose primary purpose is to handle, exchange, transfer, store, treat or dispose of hazardous materials or wastes, or any location contaminated due to off-site migration of hazardous materials or wastes from such a facility or site.
- Inactive Waste Management Facility - any former legal or illegal operation or site whose primary purpose was to handle, exchange, transfer, store, treat or dispose of hazardous materials or wastes, or any location contaminated due to off-site migration of hazardous materials or wastes from such a facility or site.
- Midnight Dump - any illegal dumping of hazardous substances into the air, land or water or other element, whether accidental or deliberate.
- Transportation-Related - any release or potential release of hazardous substances due to a transportation situation, accident or malfunction.
- Other - any release of hazardous substances which do not conform to any of the above categories and/or where sources of contamination are unknown.
8. DESCRIPTION: A brief account of site events or conditions necessitating a response action.

9. PRIMARY CONTAMINANTS
CATEGORY:

- Dioxin
- PCBs
- Asbestos
- Cyanide
- Volatile Organics
- Non-volatile Organics
- Pesticides
- Waste Oils
- Toxic Gases
- Metals
- Acids
- Bases
- Solvents
- Low-level Radioactive Waste
- Naturally Occurring Radioactive Waste
- Non-hazardous Materials

10. THREAT CATEGORY:

- Air contamination
- Direct contact - skin contact, ingestion, inhalation
- Drinking water contamination
- Ecological damage
- Fire/explosion hazard
- Food chain contamination
- Groundwater contamination
- Soil contamination
- Surface water contamination

11. MITIGATIVE ACTIONS:

- Migration control - specific measures used

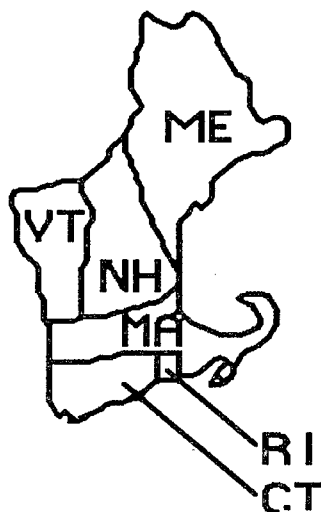
to control or eliminate contaminants from migrating off site

- Provision of alternate water supplies - temporary or permanent
- Temporary relocation/evacuation - of nearby populations
- Controlling source of threat
 - securing containers: sealing open containers and putting leaky, corroded containers of hazardous substances into new containers
 - reducing volume of hazardous substances in lagoons/containment areas
 - isolating incompatible substances
 - covering/capping: containment of airborne threats, landfills, lagoons, hazardous materials
 - extinguishing a fire
 - bulking materials
 - solidifying materials
 - neutralizing materials
 - collecting and/or retaining contaminants
 - other (specify).

- Excavation - soil, contaminated materials, containers
- Site restoration - backfilling, grading, seeding, repaving
- Treatment/disposal of wastes - all treatment/disposal done in accordance with applicable hazardous waste management regulations
- Alternative technology indicators - alternatives to land disposal that may be used to treat or dispose of wastes in accordance with applicable hazardous waste management regulations:
 - Recycling - treats or processes hazardous waste to recapture material that may be reused in manufacturing and other processes
 - Thermal Destruction, e.g., incineration - destroys or reduces waste to a safer concentration through heat application
 - Stabilization, e.g., cement-based techniques - treatment method that limits solubility or toxicity of hazardous waste constituents
 - Chemical, e.g., chemical oxidation - addition of chemical compounds to hazardous waste to destroy or neutralize hazardous waste constituents

-
- Physical - Phase Separation, e.g., gravity separation - physical process whereby solids or oil are removed from liquid
 - Physical - Component Separation, e.g., air stripping - physiochemical process involving ionic separation or separating dissolved solids from liquid
 - Biological, e.g., activated sludge - uses microorganisms to degrade organic compounds

U.S. EPA REGION 1



For Information Contact:

**Chief, Emergency Planning
and Response Branch,
Environmental Services Division
60 Westview Street
Lexington, MA 02173
(617) 860-4300**



REGION I COMPLETIONS LISTED IN VOLUMES I AND II

CONNECTICUT

Bourdeaudhui
Connecticut River Drum
Housatonic River Drums
Kaposos Site
Linemaster Switch Corp.
O'Sullivan's Island Drum
Rye Street Pesticide

MAINE

Androscoggin Rivers
Great Diamond Island - CG
Kennebec (flood)
Keswick Road - CG
Pinette's Salvage Yard
Saco Tannery Waste Pits
Union Chemical Co., Inc.

MASSACHUSETTS

Abandoned Drum - CG
Baird & McGuire
Beal Street Drum
Breakneck Road
Cannon Engineering Corp. (CEC)
Charles George Reclamation Landfill
Dean Street (Norwood PCBs)
High Sachem
Houegels Neck - CG
Industrial Avenue (Lowell)
Industri-Plex
Iron Horse Park
Midnight Dump
Nanpasket Beach - CG
New Bedford Site - CG
Silresim Chemical Corp.

NEW HAMPSHIRE

Auburn Road
Burns Hill Road
Bursey Asbestos
Gonic Sites
Hall Street
Johns Manville Asbestos Site
Keefe Environmental Services
Lake Sunapee
Lowell Road
Matarazzo
Mottolo Pig Farm
Ottati & Goss/Kingston Steel Drum
Pointer Asbestos
Ridge Ave. Asbestos
S Bank Asbestos
Savage Municipal Water Supply
Shady Lane Asbestos
Sylvester
Tinkham Garage

RHODE ISLAND

Castle Hill - CG
Cooks Landfill
Davis Liquid Waste
Picillo Farm
Stamina Mills, Inc.
Western Sand & Gravel

VERMONT

Cyanide Treatment
Old Springfield Landfill Site
Pine Street Canal

REGION 1

Superfund Emergency Response Actions

Site Information		Incident Category/Description	Primary Contaminants	Threat(s)	Mitigative Action(s)
Name	Rolfite Canal Street Site	Active Production Facility Numerous organic and inorganic liquids and solids were improperly stored in approximately 800 55-gallon drums, underground vaults, above-ground tanks and reaction vessels. Many of these containers were deteriorated and leaking.	Volatile Organics	Direct Contact Fire/Explosion Hazard	Site Security Sampling/Analysis Organized Materials Overpacked Drums Pumped Contaminants Site Restoration Disposal
City	Shelton		Non-volatile Organics		
State	CT		Pesticides		
NPL	N		Metals		
Cost	\$1,774,800		Solvents		
Start Date	06/29/87				
Completion Date	03/17/88				
Name	Cannon Engineering Corporation	Inactive Waste Management Facility Laboratory chemicals and approximately 100 samples of unknown materials posed a significant threat of fire and explosion. Other sources of danger included hundreds of five-gallon pails of paints and paint removers, two tank trailers and approximately twenty drums of unknown material, all deteriorating to some degree.	Cyanide	Fire/Explosion Hazard	Site Security Organized Materials Sampling/Analysis Bulked Materials Disposal
City	Bridgewater		Acids		
State	MA		Volatile Organics		
NPL	Y		Solvents		
Cost	\$645,000				
Start Date	08/10/87				
Completion Date	01/23/88				
Name	Cape Cod Canal (CG)	Other A barge with containers came loose from a tug, threatening a chemical spill.	Volatile Organics	Surface Water Contamination	Sampling/Analysis
City	Sandwich				
State	MA				
NPL	N				
Cost	\$185,253				
Start Date	12/03/87				
Completion Date	12/09/87				
Name	Chatham Beach (CG)	Other Abandoned drums washed ashore on the beach.	Waste Oils	Surface Water Contamination	Sampling/Analysis Disposal
City	Chatham				
State	MA				
NPL	N				
Cost	\$3,100				
Start Date	08/10/88				
Completion Date	09/27/88				

+ Note: Previous removal was completed at site. See Introduction for details.

REGION 1

Superfund Emergency Response Actions

Site Information	Incident Category/Description	Primary Contaminants	Threat(s)	Mitigative Action(s)
Name #7 Commercial Street City Brockton State MA NPL N Cost \$25,000 Start Date 02/17/88 Completion Date 02/24/88	Midnight Dump A container labelled "caution infectious wastes" and a sealed package of medical supplies were discovered in a recovered stolen van.	Infectious Wastes	Air Contamination/Inhalation Direct Contact	Sampling/Analysis Overpacked Drums AT: Thermal Destruction
Name Cottage Street City Dorchester State MA NPL N Cost \$2,500 Start Date 08/12/88 Completion Date 08/12/88	Midnight Dump There was a midnight dump by an unknown source.	Unknown	Direct Contact	Overpacked Drums Disposal
Name Fairview Road City Norwood State MA NPL N Cost \$2,500 Start Date 05/19/88 Completion Date 05/19/88	Midnight Dump Drums were abandoned along a roadside.	Unknown	Direct Contact	Sampling/Analysis Disposal
Name Industri-Plex + City Woburn State MA NPL Y Cost \$40,000 Start Date 05/11/88 Completion Date 06/18/88	Inactive Production Facility Wastes from a chemical plant and glue factory were buried on the 244-acre property in an industrial park. The original fence was vandalized.	Metals	Direct Contact Groundwater Contamination Soil Contamination	Site Security
Name Lowney Way City Charleston State MA NPL N Cost \$2,500 Start Date 03/09/88 Completion Date 03/10/88	Midnight Dump A two to three pound plastic bag of asbestos labelled "asbestos waste" was discovered in a densely populated urban area where adults and children had easy access to the substance.	Asbestos	Air Contamination/Inhalation Direct Contact	Overpacked Drums Disposal

+ Note: Previous removal was completed at site. See Introduction for details.

REGION 1

Superfund Emergency Response Actions

Site Information		Incident Category/Description	Primary Contaminants	Threat(s)	Mitigative Action(s)
Name	Nantasket Beach	Midnight Dump A compressed gas cylinder releasing a green substance washed ashore on Nantasket Beach.	Volatile Organics	Air Contamination/Inhalation	Sampling/Analysis Overpacked Materials Disposal
City	Hull				
State	MA				
NPL	N				
Cost	\$2,000				
Start Date	04/26/88				
Completion Date	04/27/88				
Name	Nyanza Chemical	Active Production Facility An abandoned underground vault containing chemical sludges from a dye manufacturing process leaked sludges and chemicals into soils downgradient of the vault.	Volatile Organics Pesticides Metals Solvents	Air Contamination/Inhalation Direct Contact Groundwater Contamination Surface Water Contamination	Sampling/Analysis Built Road Relocated Treatment System Excavation Solidified Materials Neutralized Materials Disposal Site Restoration
City	Ashland				
State	MA				
NPL	Y				
Cost	\$2,243,000				
Start Date	05/11/87				
Completion Date	06/10/88				
Name	Salem Acres	Inactive Waste Management Facility Following four days of severe rains, two of several lagoons near a residential area overflowed into Strongwater Brook and adjacent wetland. These lagoons held sanitary sewerage, and grit and grease sludges buried between 1947 and 1969.	PCBs Metals	Direct Contact Surface Water Contamination	Site Security Sampling/Analysis Containment/Retention Migration Control Solidified Materials Pumped Contaminants Excavation Capping Site Restoration Disposal
City	Salem				
State	MA				
NPL	Y				
Cost	\$1,472,000				
Start Date	04/10/87				
Completion Date	04/08/88				
Name	Samoset Avenue Chemical Spill	Midnight Dump Approximately five gallons of a very caustic substance were dumped on a sidewalk. The site was located in a heavily populated residential area two blocks from the shore of the Massachusetts Bay.	Unknown Caustic Substance	Direct Contact Soil Contamination Surface Water Contamination	Sampling/Analysis Excavation Solidified Materials Organized Materials Disposal
City	Hull				
State	MA				
NPL	N				
Cost	\$3,000				
Start Date	10/02/87				
Completion Date	10/03/87				

+ Note: Previous removal was completed at site. See Introduction for details.

REGION 1

Superfund Emergency Response Actions

Site Information		Incident Category/Description	Primary Contaminants	Threat(s)	Mitigative Action(s)
Name	Niquette Dr. Asbestos Area 1	Other Asbestos baghouse and pellet wastes were exposed throughout the backyards of three adjacent residential properties located in a wetland area.	Asbestos	Direct Contact	Sampling/Analysis Excavation Capping Site Restoration Disposal
City	Nashua				
State	NH				
NPL	N				
Cost	\$250,000				
Start Date	05/15/87				
Completion Date	10/24/87				
Name	Niquette Dr. Asbestos Area 2	Other Exposed asbestos was located in an unrestricted swampy area along Salmon Brook.	Asbestos	Direct Contact	Sampling/Analysis Excavation Capping Site Restoration Disposal
City	Nashua				
State	NH				
NPL	N				
Cost	\$250,000				
Start Date	05/15/87				
Completion Date	10/24/87				
Name	Russell Avenue Asbestos Area	Other Large areas of exposed asbestos were on three acres bordered by residential properties and Salmon Brook. A steep embankment on the southern and western boundaries leveled off to a marshy area at Salmon Brook.	Asbestos	Air Contamination/Inhalation	Sampling/Analysis Capping Disposal
City	Nashua				
State	NH				
NPL	N				
Cost	\$450,000				
Start Date	04/01/87				
Completion Date	10/07/87				
Name	Tibbetts Road +	Inactive Waste Management Facility Volatile organic compounds from 350 deteriorated and leaking drums contaminated shallow wells serving private residences within 50 yards of the site. PCB-and dioxin-contaminated soil were onsite.	Dioxin PCBs Volatile Organics Solvents	Direct Contact Fire/Explosion Hazard Groundwater Contamination Soil Contamination Surface Water Contamination	Sampling/Analysis Excavation Neutralized Materials Monitored Wells Pumped Contaminants Provided Bottled Water Constructed Water Main Disposal AT: Thermal Destruction
City	Barrington				
State	NH				
NPL	Y				
Cost	\$2,070,011				
Start Date	09/30/85				
Completion Date	03/30/88				

+ Note: Previous removal was completed at site. See Introduction for details.

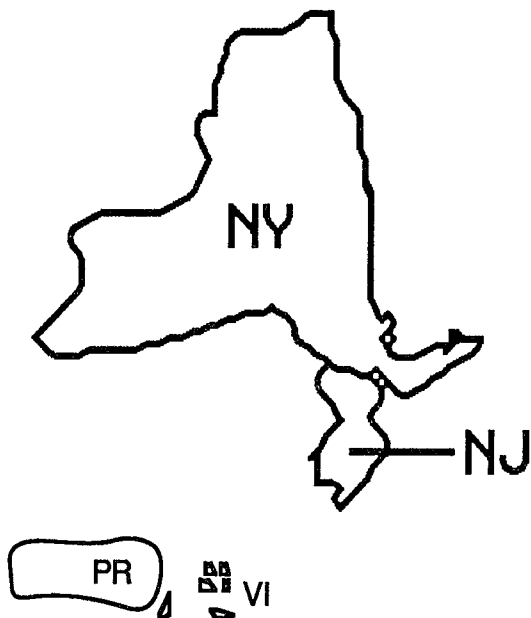
REGION 1

Superfund Emergency Response Actions

Site Information		Incident Category/Description	Primary Contaminants	Threat(s)	Mitigative Action(s)
Name	Tibbetts Road +	Other Volatile organic compounds from 350 deteriorated and leaking drums contaminated shallow wells serving private residences within 50 yards of the site. PCB-and dioxin- contaminated soil were onsite.	Dioxin	Direct Contact	Constructed Water Main
City	Barrington		PCBs	Fire/Explosion Hazard	Provided Hookups to
State	NH		Volatile Organics	Groundwater Contamination	Water Main
NPL	Y		Solvents	Soil Contamination	Installed Water
Cost	\$2,070,011		Pesticides	Surface Water Contamination	Treatment Plant
Start Date	07/20/88				
Completion Date	08/26/88				
Name	Stamina Mills +	Inactive Production Facility Drinking water wells near a textile company were contaminated with Trichloroethylene (TCE). During the early 1970s, 200 gallons of TCE were spilled at this textile company. A 1977 fire destroyed the mill and caused the release of 600-700 gallons of TCE. Still bottoms from the mills solvent recovery system were landfilled on site.	Solvents	Drinking Water Contamination	Removal of Leaking Storage Tanks
City	North Smithfield			Groundwater Contamination	
State	RI				
NPL	Y				
Cost	\$150,000				
Start Date	08/08/88				
Completion Date	08/17/88				

+ Note: Previous removal was completed at site. See Introduction for details.

U. S. EPA REGION 2



For Information Contact:

**Chief, Response and Prevention
Branch, Emergency and Remedial
Response Division
Woodbridge Avenue
Raritan Depot-Bldg. 209
Edison, NJ 08837
(201) 321-6657**



REGION II COMPLETIONS LISTED IN VOLUMES I AND II

NEW JERSEY

Beach Contamination
 Blue Poly Drum - CG
 Brady Metals
 Burnt Fly Bog
 Camplain Road
 Chemical Leaman Tanklines
 Delancy Trailer
 Chemical Control
 Delaware River - CG
 Duane Marine
 Fried Industries
 Gems Landfill
 Goose Farm
 Hayes Park Pool
 Hillsborough-Route 206
 Horseshoe Road Dump
 Kearny Drum Dump #1 & #5
 Kearny Drum Dump #2
 Kin-Buc Landfill
 Lipari Landfill
 Lockwood Street
 Minsei
 Myers Property
 Perona Tire Fire
 Pomona Oaks Residential Wells
 Quanta Resources
 Renora, Inc.
 Signo Delta Warehouse
 Waldick Aerospace Devices

NEW YORK

Abandoned Drums
 Abandoned Drum- Erie Canal - CG
 American Thermostat
 Asbestos Dumping
 Asbestos/Torry Place
 Bayshore
 Berncolor Inc. - CG
 Blooming Grove
 Byron Barrel & Drum
 Cayadutta Creek
 Fort Drum
 Fort Totten - CG
 Fulton Terminals
 Gazzola Drive
 Hyde Park Drum
 Jagger Lane
 Kentucky Avenue Well Field
 Linclon Avenue
 Long Island Beach - CG
 Love Canal (Black Creek)
 Madison Wire Co.
 Mek Spill
 Moreland Site
 N. Lindenhurst
 Olean Well Field
 Parthey Lane
 Pollution Abatement Services (PAS)
 Primo Shield
 Sag Harbor
 Sammis Avenue - Deer Park
 Shirley #2
 Signo/Coty
 Signo/Kenston
 Signo Trading

NEW YORK (Cont.)

Town of Kent
 Wading River
 Wallkill Well
 Wide Beach Development
 Windus Drive
 York Oil Company

PUERTO RICO

Carnuy River Dump
 Dorado Drum Site
 Puerto Rico Organic Inc.

REGION 2

Superfund Emergency Response Actions

Site Information	Incident Category/Description	Primary Contaminants	Threat(s)	Mitigative Action(s)
Name Atlantic Resources City Sayerville State NJ NPL N Cost \$669,000 Start Date 02/05/87 Completion Date 07/28/88	Inactive Production Facility Vats, drums of acids, containers of unknowns, two labs and eight incinerators were located on the site of an abandoned precious metal recovery facility. Soil contaminated with 2, 3, 7, 8 TCDD had been identified near the incinerators and a chronic discharge of oil was flowing into the nearby Raritan River.	Dioxin PCBs Pesticides Waste Oils Metals Acids Solvents	Direct Contact Fire/Explosion Hazard Surface Water Contamination	Site Security Sampling/Analysis Containment/Retention Excavation Overpacked Drums Bulked Materials Organized Materials Pumped Contaminants Disposal AT: Thermal Destruction
Name Chemical Insecticide Corp. City Edison Twp State NJ NPL N Cost \$15,900 Start Date 02/16/88 Completion Date 02/26/88	Inactive Production Facility A company produced pesticides and herbicides until declaring bankruptcy.	Dioxin Pesticides	Direct Contact Groundwater Contamination	Sampling/Analysis Site Security
Name Colter St. City Toms River State NJ NPL N Cost \$1,800 Start Date 03/08/88 Completion Date 08/24/88	Other Private drinking supplies exceeded the removal action level for mercury.	Metals	Drinking Water Contamination Groundwater Contamination	Sampling/Analysis Provided Bottled Water Provided Hookups to Water Main
Name Cooper River (CG) City Camden State NJ NPL N Cost \$5,000 Start Date 02/17/88 Completion Date 02/21/88	Other A spill occurred on the Cooper River. The dark brown substance was a sheen and smelled like paint.	Waste Oils	Surface Water Contamination	Sampling/Analysis

+Note: Previous removal was completed at site. See Introduction for details.

REGION 2

Superfund Emergency Response Actions

Site Information		Incident Category/Description	Primary Contaminants	Threat(s)	Mitigative Action(s)
Name	East Hanover Site	Other Private water supplies exceeded the removal action level for volatile organics.	Volatile Organics Solvents	Drinking Water Contamination Groundwater Contamination	Sampling/Analysis Provided Bottled Water Water Line Connection Provided Hookups to Water Main Site Restoration
City	East Hanover				
State	NJ				
NPL	N				
Cost	\$23,000				
Start Date	04/22/88				
Completion Date	07/15/88				
Name	East Hanover Site +	Other Following a previous action, one private residential water supply remained that exceeded the removal action level for volatile organics.	Volatile Organics Solvents	Drinking Water Contamination Groundwater Contamination	Provided Hookups to Water Main
City	East Hanover				
State	NJ				
NPL	N				
Cost	\$0				
Start Date	09/10/88				
Completion Date	09/30/88				
Name	Industrial Latex	Inactive Production Facility An inactive 9.67-acre adhesives/rubber manufacturing facility was located in a dense residential/commercial area; 10,000 people lived within 0.5 mile of the site. Two main buildings contained numerous containers of hazardous substances. Extensive fires and vandalism had occurred at this unrestricted site.	PCBs Solvents	Air Contamination/Inhalation Direct Contact Fire/Explosion Hazard Groundwater Contamination Surface Water Contamination	Site Security Sampling/Analysis Excavation Organized Materials Air/Meteorological Monitoring Pumped Contaminants Neutralized Materials Disposal AT: Thermal Destruction
City	Wallington				
State	NJ				
NPL	Y				
Cost	\$1,412,000				
Start Date	04/09/87				
Completion Date	10/02/87				
Name	International Metallurgical Service	Inactive Production Facility Four-hundred and fifty lab containers, 45 tanks, and 100 drums were contained in an abandoned precious metals recovery facility, which had been subjected to vandalism.	Cyanide Volatile Organics Metals Acids Bases	Air Contamination/Inhalation Fire/Explosion Hazard Food Chain Contamination	Site Security Sampling/Analysis Organized Materials Overpacked Drums Air Monitoring AT: Thermal Destruction
City	Newark				
State	NJ				
NPL	N				
Cost	\$460,000				
Start Date	02/22/88				
Completion Date	07/11/88				

+Note: Previous removal was completed at site. See Introduction for details.

Superfund Emergency Response Actions

Site Information	Incident Category/Description	Primary Contaminants	Threat(s)	Mitigative Action(s)
Name Myers Prop.+ City Franklin Twp State NJ NPL Y Cost \$39,000 Start Date 10/28/87 Completion Date 03/12/88	Inactive Production Facility Pesticides, herbicides and paint stored in an old barn had contaminated one well used for drinking water.	Asbestos Volatile Organics Pesticides Metals Solvents	Direct Contact Drinking Water Contamination Groundwater Contamination Surface Water Contamination	Site Security Sampling/Analysis Migration Control
Name Nascolite Corp City Millville State NJ NPL Y Cost \$195,500 Start Date 10/28/87 Completion Date 03/21/88	Inactive Production Facility Polymethyl methacrylate was manufactured for 27 years on this 17.5-acre site located in a wooded area. Underground tanks holding the plant's residue leaked, causing soil and groundwater contamination.	Asbestos Volatile Organics Metals Solvents	Direct Contact Fire/Explosion Hazard Groundwater Contamination Soil Contamination	Extinguished Fire Excavation Pumped Contaminants Bulked Materials Overpacked Drums Organized Materials Disposal
Name Pulverizing Services City Moorestown State NJ NPL N Cost \$495,000 Start Date 02/18/88 Completion Date 05/02/88	Inactive Production Facility Pesticides and chemicals stored at the defunct facility posed a significant threat to a large area of the township.	Pesticides	Air Contamination/Inhalation Direct Contact Fire/Explosion Hazard Soil Contamination Groundwater Contamination Drinking Water Contamination	Site Security Sampling/Analysis Organized Materials Disposal
Name Arsenic Mines City Kent State NY NPL N Cost \$69,600 Start Date 03/24/88 Completion Date 09/29/88	Other A residential well contained high levels of arsenic, possibly from material moved from the tailings pile.	Metals	Drinking Water Contamination Groundwater Contamination	Sampling/Analysis Provided Bottled Water Constructed Cistern
Name Bern Metals City Buffalo State NY NPL N Cost \$48,000 Start Date 04/21/88 Completion Date 07/08/88	Inactive Production Facility An abandoned metal recovery facility is located in a mixed residential/light industry area approximately one mile from the Buffalo River.	Metals Acids	Direct Contact	Site Security Sampling/Analysis

+Note: Previous removal was completed at site. See Introduction for details.

REGION 2

Superfund Emergency Response Actions

Site Information	Incident Category/Description	Primary Contaminants	Threat(s)	Mitigative Action(s)
Name Clothier Disposal City Granby State NY NPL Y Cost \$925,000 Start Date 10/07/86 Completion Date 07/22/88	Inactive Waste Management Facility Approximately 2,200 crushed, burned, punctured or rusted drums of industrial waste were disposed of in an unsecured area consisting primarily of farmland with wood lots and interconnected wetlands. A dirt access road separated this site from an active farm.	PCBs Volatile Organics Solvents	Direct Contact Fire/Explosion Hazard Food Chain Contamination Groundwater Contamination Surface Water Contamination	Site Security Sampling/Analysis Migration Control Containment/Retention Overpacked Drums Bulked Materials Solidified Materials Organized Materials Excavation Disposal AT: Thermal Destruction
Name Fort Ann City Village of Fort Ann State NY NPL N Cost \$2,000 Start Date 03/01/88 Completion Date 03/11/88	Other A private residential well within 50 yards of a facility, which formulates and distributes pesticides and herbicides, was contaminated.	Pesticides	Groundwater Contamination	Sampling/Analysis Provided Bottled Water
Name High View Terrace City West Seneca State NY NPL N Cost \$435,521 Start Date 03/24/88 Completion Date 04/22/88	Other EPA received a request to limit access, remove waste and decontaminate a vacant lot that was in close proximity to two elementary schools.	Cyanide Sulfide	Direct Contact	Site Security Sampling/Analysis Disposal
Name Hudson River (CG) City New York State NY NPL N Cost \$3,771 Start Date 02/10/88 Completion Date 02/10/88	Other The Coast Guard was contacted by New York State to remove drums of unknown contents from the Hudson River.	Non-Hazardous Materials	Surface Water Contamination	Sampling/Analysis Disposal

+Note: Previous removal was completed at site. See Introduction for details.

REGION 2

Superfund Emergency Response Actions

Site Information	Incident Category/Description	Primary Contaminants	Threat(s)	Mitigative Action(s)
Name Lincoln Avenue / P.J. City Port Jefferson State NY NPL N Cost \$23,000 Start Date 07/10/87 Completion Date 02/25/88	Other Four residential wells were contaminated. One of these wells exceeded EPA's 10-day Health Advisory for trichloroethylene.	Volatile Organics Solvents	Direct Contact Drinking Water Contamination	Sampling/Analysis Provided Bottled Water Provided Hookups to Water Main Site Restoration
Name Mattiace Petrochemicals Company City Glenwood Landing State NY NPL Y Cost \$480,000 Start Date 02/05/88 Completion Date 06/15/88	Inactive Waste Management Facility Approximately 80 55-gallon drums and 100 5-gallon containers, many deteriorated and leaking, were scattered throughout the site. The area is approximately 150 yards from a residential area, 3,700 feet from a public water supply well and directly adjacent to a state nature preserve.	PCBs Volatile Organics Acids Bases Solvents	Direct Contact Fire/Explosion Hazard	Site Security Sampling/Analysis Bulked Material Solidified Materials Disposal AT: Thermal Destruction
Name Miller Ave. City Amityville State NY NPL N Cost \$7,000 Start Date 02/19/88 Completion Date 07/21/88	Other Five private residential wells, which served as the sole source of potable water, exceeded the removal action level for tetrachloroethylene and trichloroethylene contamination.	Solvents	Drinking Water Contamination Groundwater Contamination	Sampling/Analysis Provided Bottled Water Provided Hookups to Water Main
Name Minor Spill / Youngstown (CG) City Youngstown State NY NPL N Cost \$614 Start Date 03/15/88 Completion Date 05/05/88	Other One drum on a Coast Guard station was leaking.	Unknown	Direct Contact	Sampling/Analysis Disposal

+Note: Previous removal was completed at site. See Introduction for details.

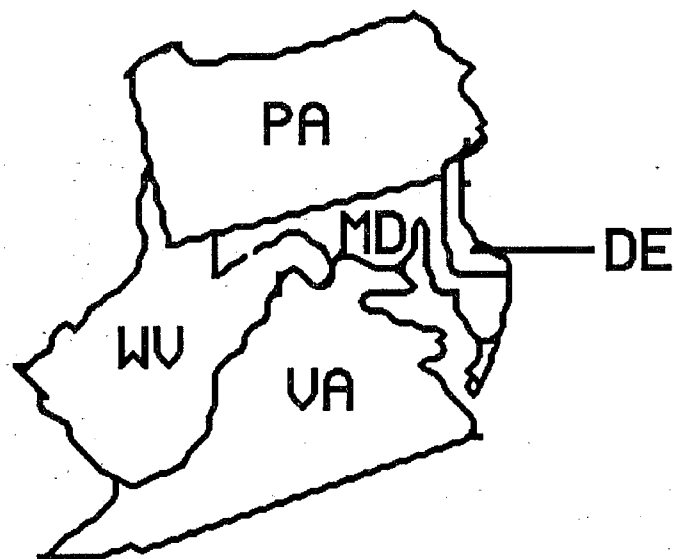
REGION 2

Superfund Emergency Response Actions

Site Information	Incident Category/Description	Primary Contaminants	Threat(s)	Mitigative Action(s)
Name North Bloomfield City Lima State NY NPL N Cost \$681,899 Start Date 12/02/85 Completion Date 06/03/88	Other Various volatile organics had been detected in wells at 32 private residences and one business with 60 employees.	Volatile Organics Solvents	Drinking Water Contamination Groundwater Contamination	Sampling/Analysis Provided Bottled Water Provided Hookups to Water Main
Name Pollution Abatement Services City Oswego State NY NPL Y Cost \$445,118 Start Date 04/23/87 Completion Date 10/21/87	Inactive Waste Management Facility A 15-acre private incinerator site contained over 15,000 deteriorated and leaking drums and three lagoons holding 1.4 million gallons of chemicals and oils. These lagoons posed a threat of release into a creek that was 1,800 feet from Lake Ontario. Wetlands surrounded the site on three sides. Several residents were located 0.3 mile away, some of whom continued to use private wells for drinking water.	PCBs Volatile Organics Non-Volatile Organics Waste Oils	Direct Contact Fire/Explosion Hazard Groundwater Contamination Soil Contamination Surface Water Contamination	Site Security Sampling/Analysis Pumped Contaminants Migration Control Containment/Retention Overpacked Drums Disposal AT: Mobile Activated Carbon Trailer
Name Signo Trading / Mount Vernon City Mount Vernon State NY NPL N Cost \$1,777,600 Start Date 12/08/86 Completion Date 11/25/87	Inactive Waste Management Facility A three-story warehouse in a densely populated area contained numerous types of chemicals, boxes and drums and housed a commercial facility.	Dioxin Volatile Organics Non-Volatile Organics Pesticides Acids Bases Solvents	Direct Contact Fire/Explosion Hazard	Site Security Sampling/Analysis Excavation Disposal Detonation AT: Potassium Polyethylene Glycol (KPEG) Process AT: Thermal Destruction
Name Town of Pompey City Pompey State NY NPL N Cost \$79,000 Start Date 05/22/87 Completion Date 07/08/88	Other Residential wells exceeded the EPA 10-day Health Advisory for volatile organic compounds levels.	Volatile Organics Solvents	Groundwater Contamination	Sampling/Analysis Pumped Contaminants Neutralized Materials AT: Air Stripping

+Note: Previous removal was completed at site. See Introduction for details.

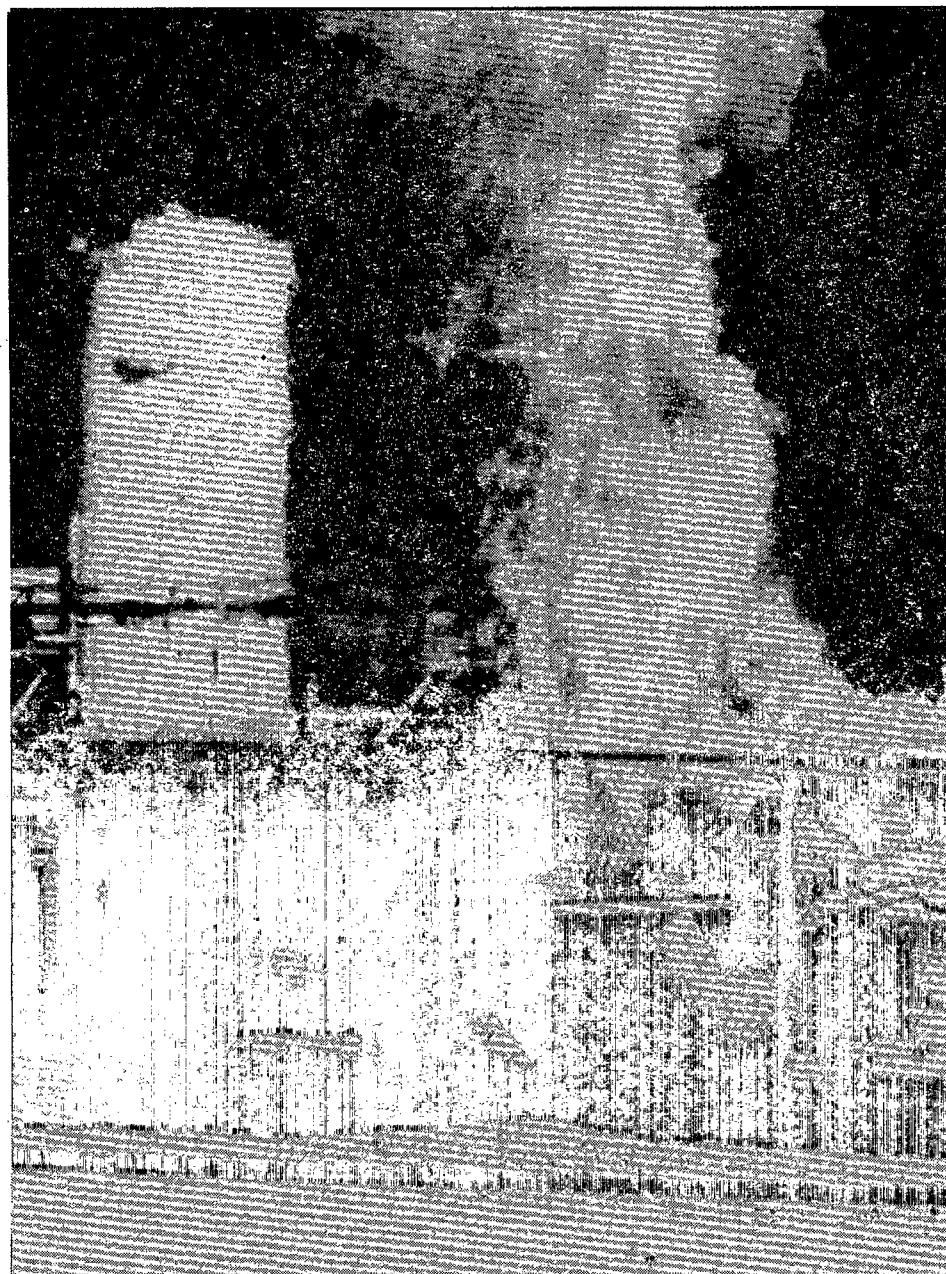
U. S. EPA REGION 3



ALSO: DC

For Information Contact:

**Chief, Superfund Branch,
Hazardous Waste Management
Division
841 Chestnut Street
Philadelphia, PA 19107
(215) 597-8132**



REGION III COMPLETIONS LISTED IN VOLUMES I AND II

DELAWARE

Army Creek Landfill
Delaware River II - CG
Delaware Sand & Gravel Landfill
Dover Air Force Base
Harvey & Knott Drum Site
New Castle Containers
Sealand Ltd.
Tybouts Corner Landfill

MARYLAND

Baltimore Iron & Metals - CG
California MD Drum
Capitol Assay Labs
Cecil County Dump
Chemical Metals Industries
Columbia Park Drum
Evans Trail
Kane & Lombard Street Drums
Locomotive Junkyard - CG
Middletown Road Dump
Sand, Gravel & Stone
Security Boulevard
Southern Maryland Wood Treating
Springer Septic Services - CG
Union Plating
United Rigging & Hauling

PENNSYLVANIA

ABM Eddystone
Ambler Asbestos Piles
Apache Waste Oil
Ashland Chemical
Bensalem Drum
Berks Sand Pit - Van Ellsweyk
BFG Electroplating
Biedler Road
Boyertown Scrap Metal
Brodhead Creek
Brown's Battery Breaking
Bruin Lagoon
Buried Drum Removal
Butler Tunnel
C & F Chemical

PENNSYLVANIA (Cont.)

C. E. Brubaker
Camp Run Drum
Caustic Midnight Dump
Dorney Road Landfill
Dracup Warehouse
Drake Chemical
Duncasville Tanker
Dunning Mountain Drum Fire
Durham Twp Solvent Spill
East Cumberland Street
Eweing Road Drum Site
Fennel Road
Garage Fire
Gradyville Midnight Dump
High Quality Plating
Howard Rodger's Drum
Interstate Transformer
Johnson Bronze
Keyser Ave. Borehole
Krum Trash
Lackawanna Refuse
Lancaster Battery
Malitovsky Drum Co.
Mercer County Drum Dump
Metcoa Radiation
Mill Creek Dump
Mt. Pocono
Old American Glycerine - Lewis Run
Old Garage
Pagan Road
Patrick Diehl
Piney Creek Drum
Pottstown Abandoned Trailer
Printed Circuits, Inc.
Revere Chemical Co.
Rotunda Drive
Route 13 Drum Site
SSCD Schoolyard Site
Sandonelle PCB
Satellite/Ammet Incendiary
Starbrick
Sunset Golf Course
Swissvale Auto
Taylor Borough Dump
Thorn Run Spill
Tinicum Marsh
Tri-State Engineering
Trowbridge Estates Mercury
Turco Coatings
Tysons Dump

PENNSYLVANIA (Cont.)

Vulcanized Rubber & Plastics
Wade (ABM)
Westinghouse Elevator Co.
Westline Site
Whitemarsh Twp Drum

VIRGINIA

Bent Creek/James River
C&R Battery Co. Inc.
Chesapeake Bay-CG
Hampton Cylinders Site
Lynnhaven Bay-CG
Rhinehart Tire Fire Dump
Roanoke River Drums
Tidewater TNT
Walkerton Tire Fire

WEST VIRGINIA

Big John's Salvage
Big John's Salvage - Hoult Road
Bittle Well Contamination
Chesapeake PCB Site
Clark Property
Coons Run
Edwards Road
Greenbriar River Flood
Harris Property
Harrison Co. PCB Spill
Holder Corporation
Interstate 70 Acid Spill
Kabletown Road
Knapp Creek
Leetown Pesticide
Manilla Creek
Richardson Property
Semco PCB Site
Stoneman Property
Walter Taylor
Wheeling Acid Spill
Wheeling Hill
Yokum Chlordane Contamination

REGION 3

Superfund Emergency Response Actions

Site Information	Incident Category/Description	Primary Contaminants	Threat(s)	Mitigative Action(s)
Name Atlantic Ave City Elsmere State DE NPL N Cost \$35,000 Start Date 05/11/87 Completion Date 04/22/88	Other Several buried drums in poor condition were discovered by workers excavating a sidewalk. Site is within 500 feet of approximately 50 residences and about 50 feet south of Chestnut Run Creek, which feeds into the Christina River.	Volatile Organics	Direct Contact	Site Security Sampling/Analysis Excavation Overpacked Drums Organized Materials Site Restoration AT: Thermal Destruction
Name Delaware Bay Drum (CG) City Camden State DE NPL N Cost \$5,000 Start Date 08/25/87 Completion Date 12/14/87	Other A 55-gallon drum containing 20 gallons of an unknown hazardous waste was recovered by a crabber who brought the drum home.	Metals	Direct Contact	Sampling/Analysis Overpacked Drums Disposal
Name Iron Hill Road Drum Site City Elkton State MD NPL N Cost \$1,124,000 Start Date 03/05/87 Completion Date 03/04/88	Inactive Production Facility Approximately 300 drums and containers, some leaking, were in and around two buildings on a 4-acre site used for light industrial purposes. A preliminary assessment revealed high levels of volatile organic compounds in the soil, evidence of vandalism, and unrestricted site access.	Volatile Organics Solvents	Fire/Explosion Hazard Soil Contamination	Site Security Sampling/Analysis Overpacked Drums Excavation Bulked Materials Organized Materials Monitored Wells Disposal AT: Thermal Destruction
Name Oakland Junk Yard Site City Oakland State MD NPL N Cost \$257,250 Start Date 11/26/86 Completion Date 03/28/88	Midnight Dump Two abandoned tractor trailers discovered during a criminal investigation contained 150 deteriorated and leaking drums. The site is within 100 yards of residences and 0.5 miles from the city of Oakland.	Pesticides Acids Bases Solvents	Direct Contact Drinking Water Contamination Fire/Explosion Hazard	Sampling/Analysis Overpacked Drums Disposal

+ Note: Previous removal was completed at site. See Introduction for details.

REGION 3

Superfund Emergency Response Actions

Site Information	Incident Category/Description	Primary Contaminants	Threat(s)	Mitigative Action(s)
Name Trans Tech/Adamstown City Frederick County State MD NPL N Cost \$145,000 Start Date 05/24/86 Completion Date 10/02/87	Active Production Facility Groundwater at this site was found to be contaminated as a result of the improper disposal of solvents.	Solvents	Air Contamination/Inhalation Direct Contact Drinking Water Contamination Groundwater Contamination	Provided Bottled Water Provided Hookups to Water Main AT: Physical Carbon Adsorption AT: Physical Air-Stripping
Name American Insulator Co. City New Freedom State PA NPL N Cost \$249,000 Start Date 11/03/86 Completion Date 10/16/87	Inactive Production Facility This site is an abandoned plastic molding facility with a variety of solvents, lacquers and coatings stored haphazardly in and around deteriorating buildings and two small laboratories.	Acids Solvents	Direct Contact Fire/Explosion Hazard Soil Contamination Surface Water Contamination	Site Security Sampling/Analysis Organized Materials AT: Thermal Destruction
Name American Street Tannery City Philadelphia State PA NPL N Cost \$1,040,000 Start Date 08/06/87 Completion Date 07/14/88	Inactive Production Facility Approximately 350-400 drums and 200-300 laboratory-size containers of chemicals used by at least three tanning companies were stored in and around an abandoned building. Open vats holding unidentified solution were also located in this heavily vandalized building. The site is an urban area surrounded by rowhouses and bordered on one side by a carriage service keeping a number of horses.	Volatile Organics Acids	Direct Contact Fire/Explosion Hazard	Site Security Sampling/Analysis Organized Materials Disposal Detonation AT: Thermal Destruction
Name Donegal Twp Midnight Drum City Butler County State PA NPL N Cost \$30,000 Start Date 03/13/87 Completion Date 10/30/87	Midnight Dump Three 55-gallon drums of unknown material were dumped on private property approximately 50 yards upgradient of a river.	Cyanide Volatile Organics Metals Solvents	Direct Contact Fire/Explosion Hazard	Sampling/Analysis Overpacked Drums Disposal

+ Note: Previous removal was completed at site. See Introduction for details.

REGION 3

Superfund Emergency Response Actions

Site Information	Incident Category/Description	Primary Contaminants	Threat(s)	Mitigative Action(s)
Name Eager Beaver Lumber Co City Townville State PA NPL N Cost \$70,000 Start Date 02/01/88 Completion Date 09/07/88	Incident Category/Description Inactive Production Facility A 3,000-gallon lumber dip tank used for wood treating operations discharged chemicals onto the soil and into a nearby pond. An estimated 2,500 gallons were discharged annually from 1983 to 1986, killing fish and vegetation. The site is located in a rural/residential area within 300 yards of ten residences.	Primary Contaminants Volatile Organics Pesticides Solvents	Threat(s) Soil Contamination Surface Water Contamination	Mitigative Action(s) Site Security Sampling/Analysis Migration Control Containment/Retention Excavation Organized Materials Temporary Storage
Name Front Street Tanker City Chester State PA NPL N Cost \$20,000 Start Date 08/09/88 Completion Date 09/07/88	Incident Category/Description Inactive Production Facility EPA was asked to investigate a leaking tanker, drums and stained soil.	Primary Contaminants Non-Hazardous Materials	Threat(s) Direct Contact	Mitigative Action(s) Site Security Sampling/Analysis Overpacked Drums Organized Materials Excavation Temporary Storage
Name Hutchinson Mine Site City Hutchinson State PA NPL N Cost \$130,000 Start Date 10/15/87 Completion Date 04/01/88	Incident Category/Description Other Eight transformers at an unused electrical substation were vandalized resulting in the release of PCB-contaminated oil. The substation is located in a residential area and has experienced a high frequency of vandalism.	Primary Contaminants PCBs	Threat(s) Direct Contact Soil Contamination	Mitigative Action(s) Site Security Sampling/Analysis Excavation Neutralized Materials Organized Materials Site Restoration Disposal
Name Johnson Bronze City New Castle State PA NPL N Cost \$6,596 Start Date 09/01/85 Completion Date 10/30/87	Incident Category/Description Inactive Production Facility The site consisted of approximately eight acres of inactive manufacturing buildings and chemical laboratories. Containers were open and in poor condition and chemicals were stored with no regard to compatibility.	Primary Contaminants Cyanide Volatile Organics Acids	Threat(s) Air Contamination/Inhalation Direct Contact	Mitigative Action(s) Site Security Overpacked Drums Organized Materials Temporary Storage

+ Note: Previous removal was completed at site. See Introduction for details.

REGION 3

Superfund Emergency Response Actions

Site Information	Incident Category/Description	Primary Contaminants	Threat(s)	Mitigative Action(s)
Name Kevak Property City Glen Lyon State PA NPL N Cost \$50,000 Start Date 02/11/87 Completion Date 11/01/87	Other An abandoned basement laboratory contained approximately 200 chemical containers. A resident lived directly above the basement and the site was in a residential neighborhood.	Cyanide Volatile Organics Acids	Direct Contact Fire/Explosion Hazard	Sampling/Analysis Overpacked Drums Disposal Detonation
Name Lansdowne Radiation Site City Lansdowne State PA NPL Y Cost \$262,000 Start Date 09/18/84 Completion Date 08/01/88	Other Significant levels of gamma radiation and radon daughters were discovered in a duplex residence where a professor manufactured radium sources for medical use in the 1920s-1940s.	Low-Level Radioactive Waste	Direct Contact	Site Security Sampling/Analysis Temporary Relocation Decontamination Disposal Installed Fire Suppression Systems
Name Lansdowne Site #2 City Lansdowne State PA NPL N Cost \$652,559 Start Date 04/08/85 Completion Date 04/29/88	Other Three "hot" old metal cabinets in the basement of a residence were the source of excessive gamma and alpha radiation. It is believed that they were brought from the Lansdowne Site where a professor processed radium 40 years ago.	Low-Level Radioactive Waste	Air Contamination/Inhalation Direct Contact	Sampling/Analysis Decontamination Excavation Disposal
Name National Vulcanized Fiber City Kennett Square State PA NPL N Cost \$3,000 Start Date 12/11/87 Completion Date 05/26/88	Active Production Facility Heating oil containing PCBs entered a facility's cooling water outfall, which eventually discharged into the west branch of Red Clay Creek. Elevated levels of PCBs were found in fish tissue samples. The site is located in a rural/residential area next to a mushroom farm.	PCBs	Direct Contact Soil Contamination Surface Water Contamination	Site Security Sampling/Analysis

+ Note: Previous removal was completed at site. See Introduction for details.

REGION 3

Superfund Emergency Response Actions

Site Information	Incident Category/Description	Primary Contaminants	Threat(s)	Mitigative Action(s)
Name Nickel Plate Road City Cochranston State PA NPL N Cost \$15,500 Start Date 01/18/88 Completion Date 03/24/88	Midnight Dump Three abandoned 55-gallon drums containing PCBs were discovered along French Creek flood plain. The site is located in a rural area with the nearest residence approximately 0.3 miles away.	PCBs	Direct Contact	Sampling/Analysis Overpacked Drums AT: Thermal Destruction
Name Paoli Rail Yard City Paoli State PA NPL Y Cost \$1,752,100 Start Date 02/26/86 Completion Date 06/16/88	Active Production Facility This unsecured and easily accessible site was contaminated with PCBs from electrical transformer repairs. The ten acre site is surrounded on three sides by residential areas. Off-site contamination was believed to exist.	PCBs	Direct Contact	Site Security Sampling/Analysis Migration Control Containment/Retention Excavation Capping Site Restoration Disposal
Name Route 563 Drum Site City Salford Twp State PA NPL N Cost \$10,000 Start Date 06/04/87 Completion Date 02/08/88	Midnight Dump State police discovered one drum in a drainage ditch two feet off a heavily traveled road.	Solvents	Direct Contact Fire/Explosion Hazard	Site Security Sampling/Analysis Overpacked Drums Disposal
Name Solly Ave. Midnight Dump City Philadelphia State PA NPL N Cost \$40,000 Start Date 05/02/87 Completion Date 10/31/87	Midnight Dump Fifteen unmarked damaged and leaking drums were abandoned on property behind a newly constructed housing development.	Volatile Organics	Direct Contact Fire/Explosion Hazard	Overpacked Drums Disposal

Note: Previous removal was completed at site. See Introduction for details.

REGION 3

Superfund Emergency Response Actions

Site Information	Incident Category/Description	Primary Contaminants	Threat(s)	Mitigative Action(s)
Name Wach's Landfill City S Huntingdon State PA NPL N Cost \$285,000 Start Date 04/08/87 Completion Date 01/15/88	Active Waste Management Facility Approximately 160 deteriorating and leaking drums from active landfill and metal recycling facility compose the site.	Volatile Organics Metals	Direct Contact Fire/Explosion Hazard Soil Contamination	Site Security Sampling/Analysis Overpacked Drums Excavation Organized Materials Disposal
Name Greenwood Chemical Company City Greenwood State VA NPL Y Cost \$1,200,701 Start Date 10/15/87 Completion Date 06/20/88	Inactive Waste Management Facility Four lagoons on the site of an inoperable small batch chemistry plant contained 300,000 gallons of contaminated water, approximately 700 buried drums and 250 drums on the surface. Many lab packs and small containers of unknown materials were on the surface or partially buried.	Cyanide Volatile Organics Biological Waste	Direct Contact Fire/Explosion Hazard Soil Contamination	Sampling/Analysis Migration Control Pumped Contaminants Neutralized Materials Excavation Overpacked Drums Organized Materials Disposal
Name Mathews Electric Plating City Roanoke State VA NPL Y Cost \$45,000 Start Date 03/26/88 Completion Date 08/16/88	Inactive Production Facility Liquid electroplating waste from an auto bumper repair facility was discharged onto the ground causing chromium contamination of some local residential wells. Above ground storage tanks with approximately 3,000 gallons each, and four 55-gallon drums were also located on site.	Metals	Soil Contamination	Sampling/Analysis Pumped Contaminants Excavation Overpacked Drums Site Restoration Disposal
Name Atwell Mountain Drum Site City Atwell State WV NPL N Cost \$85,000 Start Date 09/01/87 Completion Date 02/07/88	Midnight Dump Fourteen drums, 3 of which were labeled "poisonous" and 4 others marked "solid waste," were illegally dumped near a church. The drums were in poor condition and some were open and leaking a white solid material.	Cyanide	Air Contamination/Inhalation Direct Contact Soil Contamination	Site Security Sampling/Analysis Excavation Overpacked Drums Organized Materials Disposal

+ Note: Previous removal was completed at site. See Introduction for details.

REGION 3

Superfund Emergency Response Actions

Site Information	Incident Category/Description	Primary Contaminants	Threat(s)	Mitigative Action(s)
Name Cummings Landfill City Hurricane State WV NPL N Cost \$78,000 Start Date 09/16/87 Completion Date 02/11/88	Midnight Dump Sixty-one drums were illegally dumped in a salvage yard 200 feet from a home and approximately 1500 feet from Robinson Fork Creek. Several drums leaked and stained the soil; twenty-four were empty.	Solvents	Direct Contact Soil Contamination	Site Security Sampling/Analysis Excavation Overpacked Drums Organized Materials Disposal AT: Thermal Destruction
Name Garfield Street Drum City McMechen State WV NPL N Cost \$20,000 Start Date 08/17/87 Completion Date 12/14/87	Midnight Dump Two 10-gallon plastic containers filled with unknown corrosives were abandoned near a private residence. The substance had a pH of 14.	Acids	Direct Contact	Sampling/Analysis Overpacked Containers Disposal
Name Keystone Drive Pesticide Dump City Charleston State WV NPL N Cost \$35,000 Start Date 07/25/87 Completion Date 12/04/87	Midnight Dump Three plastic jugs, cans, and liquid pesticide were dumped near a river, contaminating the soil and a roadway. Children had been seen playing near the site.	Pesticides	Direct Contact Soil Contamination	Bulked Materials Excavation Organized Materials Disposal
Name Lakin State Farm City Chester State WV NPL N Cost \$35,000 Start Date 08/27/87 Completion Date 12/14/87	Other Four drums of capacitors and nine loose capacitors were on this rural site, leaking oil and contaminating the surrounding soil.	PCBs	Direct Contact Soil Contamination	Sampling/Analysis Excavation Bulked Materials Disposal

+ Note: Previous removal was completed at site. See Introduction for details.

REGION 3

Superfund Emergency Response Actions

Site Information	Incident Category/Description	Primary Contaminants	Threat(s)	Mitigative Action(s)
Name Petersburg Flood City Petersburg State WV NPL N Cost \$26,000 Start Date 07/07/86 Completion Date 02/01/88	Active Production Facility Approximately 500-1000 pounds of wastes were stored in open trash cans and on pallets in an unsecured fertilizer warehouse after a major flood in November 1985. There was potential for contamination of bulk fertilizer sold for agricultural use.	Volatile Organics Pesticides	Air Contamination/Inhalation Direct Contact Food Chain Contamination	Sampling/Analysis Excavation Bulked Materials Organized Materials Disposal
Name Precious Metals Inc. City Beckley State WV NPL N Cost \$40,000 Start Date 06/19/86 Completion Date 10/31/87	Midnight Dump Four drums containing muriatic acid and cyanide were abandoned at the site.	Cyanide Acids	Air Contamination/Inhalation Direct Contact	Overpacked Drums Disposal
Name Ray York Body Shop City Oak Hill State WV NPL N Cost \$60,000 Start Date 08/12/87 Completion Date 02/29/88	Inactive Production Facility Approximately 20 drums of paint wastes in solvents were illegally dumped at an abandoned auto body facility in the center of a moderately sized housing development. Ten of the 20 drums were empty, while 2 others were sealed firmly.	Volatile Organics Solvents	Air Contamination/Inhalation Direct Contact Soil Contamination	Site Security Sampling/Analysis Overpacked Drums Organized Materials Excavation Disposal
Name Ridgeview PCB Site City Boone Co. State WV NPL N Cost \$40,265 Start Date 07/22/87 Completion Date 12/04/87	Inactive Production Facility Five transformers containing PCB-contaminated oil were deserted at this facility. One had been knocked on its side, spilling oil and contaminating the soil.	PCBs	Direct Contact Soil Contamination	Organized Materials Excavation Disposal

+ Note: Previous removal was completed at site. See Introduction for details.

REGION 3

Superfund Emergency Response Actions

Site Information	Incident Category/Description	Primary Contaminants	Threat(s)	Mitigative Action(s)
Name Sasser Electric Co. City Drum Site State WV NPL N Cost \$35,000 Start Date 05/26/87 Completion Date 04/18/88	Inactive Production Facility Drums were discovered in mixed business/residential neighborhood. One drum had spilled PCBs onto concrete pavement.	PCBs	Direct Contact	Sampling/Analysis Overpacked Drums Excavation Neutralized Materials Disposal Site Restoration
Name Shaffer Equipment Co. City Minden State WV NPL N Cost \$3,626,443 Start Date 12/28/84 Completion Date 12/20/87	Active Production Facility This site was an unsecured, active firm which was contaminated throughout with PCBs. Approximately 90 transformers, 107 capacitors and 55 drums of various chemicals were onsite, and both vandalism and off-site migration had been observed.	PCBs Acids	Direct Contact Soil Contamination Surface Water Contamination	Site Security Sampling/Analysis Migration Control Excavation Disposal AT: Thermal Destruction
Name Upper Glade Drum City Upper Glade State WV NPL N Cost \$30,000 Start Date 08/04/87 Completion Date 12/14/87	Midnight Dump A leaking drum of unknown material was illegally dumped along a road, producing a large area of stressed vegetation. A local child became ill after coming in contact with the drum.	Solvents	Direct Contact Soil Contamination	Sampling/Analysis Overpacked Drums Excavation AT: Thermal Destruction
Name Upshur County 4-H Tarpit City Selbyville State WV NPL N Cost \$80,000 Start Date 04/19/88 Completion Date 06/21/88	Inactive Production Facility The 3/4-acre tarpit located at an abandoned chemical company was utilized as a disposal area for the plant's wastes.	Volatile Organic	Direct Contact	Site Security Sampling/Analysis Migration Control Containment/Retention Capping Site Restoration

+ Note: Previous removal was completed at site. See Introduction for details.

1. The first part of the document discusses the importance of maintaining accurate records of all transactions. It emphasizes that proper record-keeping is essential for the transparency and accountability of the organization. This section also outlines the various methods used to collect and analyze data, ensuring that the information is reliable and up-to-date.

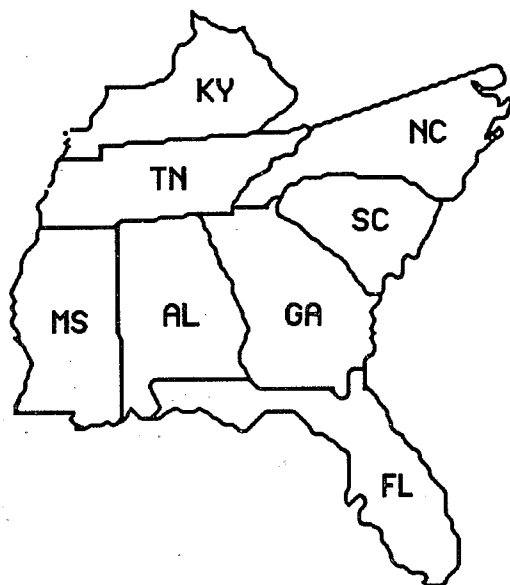
2. The second part of the document focuses on the implementation of the proposed changes. It details the steps involved in the transition process, from the initial planning phase to the final execution. This section also addresses the potential challenges that may arise during the implementation and provides strategies to overcome them.

3. The third part of the document discusses the impact of the proposed changes on the organization's overall performance. It presents a comprehensive analysis of the expected outcomes, including improvements in efficiency, cost reduction, and enhanced customer satisfaction. This section also includes a comparison of the current state of the organization with the projected future state.

4. The fourth part of the document provides a summary of the key findings and conclusions. It reiterates the importance of the proposed changes and the need for continued monitoring and evaluation. This section also includes a list of recommendations for further action and a timeline for the implementation of these recommendations.

1. The first part of the document discusses the importance of maintaining accurate records of all transactions. It emphasizes that proper record-keeping is essential for the transparency and accountability of the organization. This section also outlines the various methods used to collect and analyze data, ensuring that the information is reliable and up-to-date.

U. S. EPA REGION 4



For Information Contact:

**Chief, Emergency and Remedial
Response Branch,
Waste Management Division
345 Courtland Street, N.E.
Atlanta, GA 30365
(404) 347-4097**



REGION IV COMPLETIONS LISTED IN VOLUMES I AND II

ALABAMA

Callahan Drum
Church of God Property
Ingram Property
McAllister Drum Site
Mowbray Engineering Co.
Newfound Road
Petro Chemical
Turkey Creek Barrel Dump

FLORIDA

Abandoned Drum - CG
Abandoned Drum/Hillsborough - CG
Abandoned Drum/Marathon - CG
American Creosote/Pensacola
Beached Drum - CG
City Industries Inc.
Coleman - Evans Wood Pres. Co.
Creosote Tanks Release (Talleyrand)
Ellis Road
Hipps Road Landfill
Hollingsworth Solderless
Lake Worth Inlet - CG
Lummis Island - CG
PCB Midnight Dump
Pembroke Pines
Pepper Steel & Alloys, Inc.
Persons Property PCB Drums
Petroleum Products (Pembroke Rd.)
Pioneer Sand Co.
Sand Key - CG
Snapper Lane - CG
St. John River - CG
Tower Chemical Co.
Tri-City Oil Conservationist, Inc.
Unknown Chemical Discharge - CG
Whitehouse Oil Pits
Williams Pesticide Site
Yellow Water Road Dump

GEORGIA

Barnes Mill Drum
Barrow County Drum Site
Berrien Products
Buford Highway
Cascade Road
Catoosa County Labpack
Davis Farm
Eastern Chemcial Co.
Ft. Oglethorpe Drum
Gail Foster Property
Georgia Highway 138
Hadaway Road
Head PCB Spill
Helton Road
Hollywood Cemetary
Ivy Road (Bessie Runner)
Johnson Property Site
Kenyon Street Drum
Lake Kathy Road Spill
Linecrest Way
Marietta Road
Marzone Chemical Co.
McDonald Farm
Naomi Drum
Nashville Pesticide Site
Newnan Landfill
Old Laramore Ltd.
Payco Pallet & Drum
Pulverizing Plant Drum
Rock Bridge Park
Rome Coal Tar
Roosevelt Highway Spill
Salvo Property
Simpson Road Drum
Swainsboro Printworks
Sweetwater Creek Drums
U.S. Customs Pesticide
Villa Rich - High Point Rd.
Woodward Mill Road
Zenith Chemical

KENTUCKY

A.L. Taylor (Valley of the Drums)
Bowling Green Toxics
Chenault Rectifiers
Coal Branch Hollow
Distler Brickyard
Distler Farm
George O' Bryan Site
Harrison
Keith Farm Pond
Midnight Dumping (KY)
Nichro Plating Co.
Smith's Farm
Whitley County

MISSISSIPPI

Abandoned Drum Site
American Creosote Works (MS)
Benton Furniture Co.
Bergeron Marine
Canton Plating & Bumper Works
Caustic Chemical
Gulf Battery Exchange
Midnight Dump
Natchez Drug Site
Nesbit Scale House
Newsome Brothers/Old Reichold
Plastifax, Inc.
S. Electroforming
Sonford Products
Southern Lumber Co.

REGION IV COMPLETIONS LISTED IN VOLUMES I AND II (CONT)

NORTH CAROLINA

Ahoskie Midnight Dump
Alandale Dr. Chemical
Auburn Church Road Drums
Beach Containers - CG
Buckhorn Pesticide Fire
Buckhorn Rd. Drum
Bush Brothers Plating
Caldwell County
Cape Fear Wood Preserving
Cape Hatteras National Seashore - CG
Carolina Transformer
Chemtronics, Inc.
Clayton Ballfield Pesticide
Davenport Creosote Spill
Dockery Property
DOT Maintenance Yard
Elizabeth City Drum
Everhart Lumber Site
Furnace Road Drum
Gillcrest Road
Hollingsworth Pesticide
Humpback Mtn. Rd. Drums
Laurel Springs PCB
Lenoir Refining
Macon Property
Midnight Dumping/Guilford
One-Hour Koretizing
Plymouth Wood Treatment
Potters Pits
Queens Property
Route 211 Pesticide Site
Rowes Corner Drum Dump
Salvage Oil of America
Sampson County Dumpster
Sanford Plating Co.
Scotts Creek Battery
South Riverdale Drive
U.S. 70 Dump
US Highway 1 Truck Site
Western Carolina Smelting

SOUTH CAROLINA

Babb Drums
Burkett Cylinder
C.D. Buff
Carolawn, Inc.
Dreyfus Street
Earl Allen Chemical Sites
Horry Co. Fireworks
Kershaw Co. Landfill
Jimmy's Truck Stop
Lando Drums
Medley Farm Drum Dump
National Galvanizing
Palmetto Wood Preserving
Reimer Drum
Woodward Property Drums

TENNESSEE

American Creosote/Jackson Plant
Arlington Blending
Gallaway Pits
Hamill - Hooker Rd. #3
J & L Drum Site
Jacques Miller Site (Kirby)
Miller Site

REGION 4

Superfund Emergency Response Actions

Site Information	Incident Category/Description	Primary Contaminants	Threat(s)	Mitigative Action(s)
Name FMHA-USDA/Roy City Pine Level State AL NPL N Cost \$105,000 Start Date 10/05/87 Completion Date 02/20/88	Other Approximately 400-500 drums of pesticides and herbicides were present on site. No waste management had been observed, with drums scattered all over the site, bulging and in bad condition.	Pesticides	Direct Contact	Excavation Bulked Materials Disposal
Name Garner Road Drum City Cordova State AL NPL N Cost \$50,000 Start Date 11/12/87 Completion Date 01/06/88	Midnight Dump Fifty-three drums were illegally dumped just outside of Jasper, AL.	Solvents	Direct Contact Fire/Explosion Hazard	Sampling/Analysis Overpacking Drums Disposal
Name Edmond's Salvage Yard City Cross City State FL NPL N Cost \$600,000 Start Date 12/07/87 Completion Date 12/21/87	Inactive Waste Management Facility The site is an abandoned 4-acre dump which was strewn with heavy metal-contaminated ash, transformers, old 55-gallon drums, asbestos, and assorted metal junk.	Asbestos Volatile Organics Metals	Direct Contact Groundwater Contamination Surface Water Contamination	Sampling/Analysis Excavation Bulked Materials Site Restoration Disposal
Name General Laminates City Jasper County State FL NPL N Cost \$200,000 Start Date 04/11/88 Completion Date 06/27/88	Inactive Production Facility An abandoned laminating facility had 500 to 600 fifty-five gallon drums of hazardous waste stored in an open field. Some drums had no lids or were leaking.	Solvents	Direct Contact Fire/Explosion Hazard	Sampling/Analysis Excavation Bulked Materials Disposal AT: Thermal Destruction
Name Ordinance Research Institute City Ft. Walton Beach State FL NPL N Cost \$45,000 Start Date 09/19/87 Completion Date 01/15/88	Inactive Production Facility Three thousand pounds of explosives, reactive materials, radioactive material, and flammable liquids and solids were abandoned at this site.	Volatile Organics Metals Solvents Low-Level Radioactive Waste	Air Contamination/Inhalation Direct Contact Fire/Explosion Hazard	Temporary Evacuation Neutralized Materials Disposal Detonation

+Note: Previous removal was completed at site. See Introduction for details.

REGION 4

Superfund Emergency Response Actions

Site Information	Incident Category/Description	Primary Contaminants	Threat(s)	Mitigative Action(s)
Name Worthington Spring Site City Worthington Spring State FL NPL N Cost \$45,600 Start Date 10/13/87 Completion Date 01/20/88	Inactive Waste Management Facility Forty 55-gallon drums and eight 5-gallon drums were deserted onsite. Most of the drums were in poor condition and leaking. Private wells are within 30 yards.	Metals Solvents	Drinking Water Contamination	Sampling/Analysis Disposal
Name Bank County Drum City Atlanta State GA NPL N Cost \$10,000 Start Date 05/20/87 Completion Date 10/27/87	Midnight Dump Five abandoned 55-gallon drums were deserted along a roadway. The drums were open and exposed to the weather. Much material was spilled on the ground.	Volatile Organics	Air Contamination/Inhalation Fire/Explosion Hazard	Sampling/Analysis Overpacked Drums Disposal AT: Thermal Destruction
Name Cobb County Drum City Marietta State GA NPL N Cost \$8,000 Start Date 04/19/88 Completion Date 06/06/88	Midnight Dump EPA responded to six 55-gallon drums dumped on the side of a residential street.	Waste Oils	Direct Contact	Sampling/Analysis Bulked Materials Disposal
Name Dade County Drum City Trenton State GA NPL N Cost \$10,000 Start Date 07/22/87 Completion Date 10/23/87	Midnight Dump Two 55-gallon drums were dumped on private property. The drums contained paint and solvent wastes. A child received minor burns while playing around the drums.	Solvents	Direct Contact	Overpacked Drums Disposal
Name Dickerson Post Treating City Homerville State GA NPL N Cost \$855,000 Start Date 07/22/87 Completion Date 03/19/88	Inactive Production Facility This former wood treating facility contained one pressure cylinder, three storage tanks, two surface impoundments, and 252 open drums containing liquids. A well is 100 feet away.	Non-volatile Organics	Direct Contact Air Contamination/Inhalation Groundwater Contamination.	Bulked Materials Pumped Contaminants Excavation Disposal AT: Thermal Destruction

+Note: Previous removal was completed at site. See Introduction for details.

REGION 4

Superfund Emergency Response Actions

Site Information	Incident Category/Description	Primary Contaminants	Threat(s)	Mitigative Action(s)
Name Marietta Mercury Spill City Marietta State GA NPL N Cost \$1,000 Start Date 04/12/88 Completion Date 04/12/88	Other A resident reported that some six ounces of mercury spilled on the floor of her house. When EPA arrived, she had cleaned it up.	Metals	Direct Contact	No Actions
Name Mathis Brothers Chickamauga City Lafayette State GA NPL N Cost \$30,000 Start Date 07/23/87 Completion Date 10/23/87	Active Waste Management Facility The site is an abandoned facility where 30 to 40 drums of lead were illegally landfilled. The drums were badly decayed with lead spilled from many of them.	Metals	Air Contamination/Inhalation Direct Contact Soil Contamination	Excavation Bulked Materials Disposal
Name Peachtree Mercury Spill City Norcross State GA NPL N Cost \$10,000 Start Date 12/30/87 Completion Date 02/24/88	Other Mercury was spilled from a dumpster onto the parking lot of several businesses.	Metals	Direct Contact	Containment/Retention AT: Recycling
Name Rock Road Drum Spill City Greenville State GA NPL N Cost \$8,000 Start Date 02/18/88 Completion Date 08/08/88	Midnight Dump Eight drums were illegally dumped by unknown parties. The drums contained ignitable substances and two of them leaked considerably.	Solvents	Direct Contact Fire/Explosion Hazard Soil Contamination	Excavation Overpacked Drums Disposal
Name A.L. Taylor + City Shepardsville State KY NPL Y Cost \$50,000 Start Date 09/12/88 Completion Date 09/23/88	Inactive Waste Management Facility This 13-acre dump and recycling center contained ignitable solvents and incompatible acids & bases. Solvents from approximately 4,200 drums were leaking into a tributary of the Ohio River.	PCBs Acids Bases Solvents	Groundwater Contamination Surface Water Contamination Soil Contamination Fire/Explosion Hazard	Site Restoration

+Note: Previous removal was completed at site. See Introduction for details.

REGION 4

Superfund Emergency Response Actions

Site Information	Incident Category/Description	Primary Contaminants	Threat(s)	Mitigative Action(s)
Name Greenup Tire Fire City Greenup State KY NPL N Cost \$90,000 Start Date 06/07/88 Completion Date 06/18/88	Active Waste Management Facility An estimated 200,000 to 1,000,000 tires buried on a steep bank as erosion control caught fire. The Commonwealth of Kentucky requested EPA's assistance.	Pesticides Metals Acids Solvents	Direct Contact Air Contamination/Inhalation Surface Water Contamination	Extinguished Fire Migration Control Site Restoration Disposal
Name Industrial Plastics City Louisville State KY NPL N Cost \$250,000 Start Date 02/04/88 Completion Date 07/12/88	Inactive Production Facility This site was an old plastisoiling operation that applied plastic coatings to steel. There were about 130 drums scattered on the surface and an unknown number of buried drums.	Asbestos Metals Solvents	Direct Contact Fire/Explosion Hazard Soil Contamination Surface Water Contamination	Sampling/Analysis Overpacked Drums Organized Materials Bulked Materials Disposal
Name Lee's Lane Landfill City Louisville State KY NPL Y Cost \$1,800,000 Start Date 03/16/87 Completion Date 10/27/87	Inactive Waste Management Facility This site is a closed landfill where hazardous contaminants were identified in the soil, surface water, and groundwater on site.	Metals	Direct Contact Groundwater Contamination	Site Security Sampling/Analysis Migration Control Containment/Retention Capping Temporary Storage
Name Lee's Lane Landfill + City Louisville State KY NPL Y Cost \$50,000 Start Date 09/14/88 Completion Date 09/27/88	Inactive Waste Management Facility This site is a closed landfill where hazardous contaminants were identified in the soil, surface water, and groundwater on site.	Metals	Direct Contact Groundwater Contamination	Site Restoration
Name Newport Dump City Newport State KY NPL Y Cost \$2,646,400 Start Date 06/30/87 Completion Date 10/30/87	Inactive Waste Management Facility The site operated for 20 years as a municipal landfill. An installed leachate system was never operational and leachate had been observed leaking into the nearby river.	PCBs Metals	Groundwater Contamination Soil Contamination Surface Water Contamination	Site Security Containment/Retention Migration Control

+Note: Previous removal was completed at site. See Introduction for details.

REGION 4

Superfund Emergency Response Actions

Site Information	Incident Category/Description	Primary Contaminants	Threat(s)	Mitigative Action(s)
Name O'Con Engineering City Bonnieville State KY NPL N Cost \$120,000 Start Date 02/09/88 Completion Date 07/12/88	Active Production Facility The facility was previously occupied by a manufacturer of fiberglass. Approximately 5 drums containing paint cans were buried and 31 were stored on the property.	Solvents	Soil Contamination Fire/Explosion Hazard	Sampling/Analysis Bulked Materials Solidified Materials Containment/Retention Migration Control Overpacked Drums Disposal
Name Taylorsport Sand & Gravel City Taylorsport State KY NPL N Cost \$100,000 Start Date 07/20/87 Completion Date 10/09/87	Inactive Waste Management Facility Approximately 100 drums were dumped in a sand pit along the Ohio River.	Volatile Organics	Fire/Explosion Hazard	Solidified Materials Disposal AT: Thermal Destruction
Name Tindall Property Transformer City Lawrenceberg State KY NPL N Cost \$0 Start Date 11/30/87 Completion Date 12/21/87	Inactive Waste Management Facility Approximately 500 cubic yards of ash from various items, including transformers, were present on site. PCBs were present, and lead was leaching into an adjacent stream	PCBs Metals	Surface Water Contamination	Excavation Organized Materials Containment/Retention Disposal
Name Cowart Vacation Bible School City Tallahatchie City State MS NPL N Cost \$40,000 Start Date 6/13/88 Completion Date 6/17/88	Other Three 55-gallon drums of calcium arsenate were accidentally spread across 1/4 acre by a bulldozer. One-hundred and three drums were then discovered beneath the surface.	Pesticides	Air Contamination/Inhalation Direct Contact	Site Security Excavation Overpacked Drums Site Restoration Disposal
Name Gooken Farms Drum City Senatobia State MS NPL N Cost \$50,000 Start Date 6/15/87 Completion Date 10/22/87	Midnight Dump Approximately 42 drums were found in a drainage ditch one-quarter of a mile from a farm residence.	Solvents	Direct Contact	Sampling/Analysis Organized Materials Neutralized Materials Bulked Materials Disposal

+Note: Previous removal was completed at site. See Introduction for details.

REGION 4

Superfund Emergency Response Actions

Site Information		Incident Category/Description	Primary Contaminants	Threat(s)	Mitigative Action(s)
Name	Newsome Bro./Old Reichold +	Active Production Facility Over 3,600 drums of hazardous materials were left by a former owner. Also three lagoons and a 500-gallon tank filled with contaminants, and an empty 16,000-gallon tank were onsite.	PCBs Solvents	Fire/Explosion Hazard Groundwater Contamination	Excavation Bulked Materials Organized Materials Disposal
City	Columbia				
State	MS				
NPL	Y				
Cost	\$1,050,000				
Start Date	11/03/87				
Completion Date	02/08/88				
Name	Barnes Property	Midnight Dump A fire destroyed a warehouse where chemicals were stored, releasing hazardous materials into the environment.	Pesticides	Direct Contact Groundwater Contamination Soil Contamination Surface Water Contamination	Excavation Disposal
City	Fairmont				
State	NC				
NPL	N				
Cost	\$26,250				
Start Date	8/10/88				
Completion Date	8/11/88				
Name	Bostic Drum	Active Production Facility Ninety-eight drums of dinitrophenol were discovered inside a garage, many of them leaking. Several mobile homes are 600 feet from the garage.	Solvents	Direct Contact Air Contamination/Inhalation Fire/Explosion Hazard Surface Water Contamination	Overpacked Drums Disposal AT: Recycling
City	Holly Ridge				
State	NC				
NPL	N				
Cost	\$70,000				
Start Date	08/11/87				
Completion Date	10/12/87				
Name	Carolina Production	Inactive Production Facility The facility contained numerous corroded drums and vats containing electroplating chemicals, solutions, and wastes.	Cyanide Metals	Air Contamination/Inhalation Direct Contact	Disposal AT: Solidified Materials
City	Ashville				
State	NC				
NPL	N				
Cost	\$379,719				
Start Date	09/14/87				
Completion Date	01/29/88				
Name	Cleveland Co. Drum	Midnight Dump Two unidentified drums were dumped behind a parking lot. One showed signs of leakage, the other was labeled "laquer thinner". A ditch was nearby.	Solvents	Direct Contact Fire/Explosion Hazard	Sampling/Analysis Organized Materials Disposal
City	Shelby				
State	NC				
NPL	N				
Cost	\$5,000				
Start Date	05/28/87				
Completion Date	10/27/87				

+Note: Previous removal was completed at site. See Introduction for details.

REGION 4

Superfund Emergency Response Actions

Site Information	Incident Category/Description	Primary Contaminants	Threat(s)	Mitigative Action(s)
Name Cornell-Dublier Electronics City Sanford State NC NPL N Cost \$450,000 Start Date 07/18/88 Completion Date 07/31/88	Inactive Production Facility Approximately 1,000 cubic yards of volatile and semi-volatile organic resins used in the manufacture of capacitors were buried in a resin trench on site.	Volatile Organics Solvents	Direct Contact Groundwater Contamination Soil Contamination Surface Water Contamination	Excavation Bulk Materials Pumped Contaminants Disposal
Name Forbush Metal Fabricators City Yadkinville State NC NPL N Cost \$100,000 Start Date 10/14/87 Completion Date 04/27/88	Inactive Production Facility The site contained seven open and ruptured drums of zinc cyanide, sodium hydroxide, phthalates, and also a 1,200 cubic foot evaporation pit with the same contaminants.	Cyanide Non-volatile organics Metals Bases	Air Contamination/Inhalation	Sampling/Analysis Overpacked Drums Excavation Neutralized Materials Disposal
Name Gaston Co. Drum City Gastonia State NC NPL N Cost \$8,000 Start Date 05/28/87 Completion Date 10/27/87	Midnight Dump Two unidentified drums were left onsite: one 55-gallon drum in poor condition with some liquid inside, and a nearly full 30-gallon drum labelled "alkaline material".	Volatile Organics	Direct Contact	Disposal
Name Gibson Midnight Drum City Gibson State NC NPL N Cost \$9,500 Start Date 10/26/87 Completion Date 02/26/88	Midnight Dump Five drums of waste, including one that was leaking, were dumped by unknown persons.	Volatile Organics	Drinking Water Contamination Groundwater Contamination	Overpacked Drums Disposal
Name JMC Plating Co City Lexington State NC NPL N Cost \$950,000 Start Date 02/04/88 Completion Date 08/12/88	Inactive Production Facility Approximately 60,000 gallons of plating sludge and 200 drums containing cyanide and heavy metals were deserted on site.	Cyanide Metals Acids Solvents	Air Contamination/Inhalation Soil Contamination	Site Security Sampling/Analysis Temporary Storage

+Note: Previous removal was completed at site. See Introduction for details.

REGION 4

Superfund Emergency Response Actions

Site Information	Incident Category/Description	Primary Contaminants	Threat(s)	Mitigative Action(s)
Name PCB Contaminated Wells City Taylorsville State NC NPL N Cost \$13,400 Start Date 10/20/87 Completion Date 11/01/87	Other Lightning struck the submersible pumps of three wells, causing a rupture of the pump capacitors which contaminated the wells with PCBs.	PCBs	Drinking Water Contamination	Sampling/Analysis Pumped Contaminants Disposal AT: Physical Treatment Carbon Adsorption
Name Union Co Drum City Monroe State NC NPL N Cost \$6,000 Start Date 05/29/87 Completion Date 10/27/87	Midnight Dump Two unidentified drums were placed on a pile of sand. The two drums, one 55-gallon and one 30-gallon, were nearly full and the smaller one had a hole.	Solvents	Direct Contact	Disposal
Name Woody's Tire Fire City Gastonia State NC NPL N Cost \$90,000 Start Date 09/12/88 Completion Date 09/14/88	Active Waste Management Facility An estimated 90,000 tires buried three feet deep caught fire. The county fire department requested EPA's assistance.	Metals Solvents	Air Contamination/Inhalation Direct Contact Surface Water Contamination	Extinguished Fire Sampling/Analysis Migration Control Site Restoration Temporary Storage
Name Donaldson Roadside Spill City Greenville State SC NPL N Cost \$20,000 Start Date 09/10/87 Completion Date 10/09/87	Midnight Dump An unknown party dumped paint solvents into a storm drain which drains to a lake. Explosive vapor levels were detected in the sewer.	Solvents	Air Contamination/Inhalation Direct Contact Fire/Explosion Hazard Soil Contamination Surface Water Contamination	Containment/Retention Pumped Contaminants Excavation Disposal
Name Geiger (C & M Oil) City Charleston State SC NPL Y Cost \$100,000 Start Date 10/14/87 Completion Date 05/16/88	Inactive Waste Management Facility Between 1969 and 1971, eight lagoons were used on site to contain waste oils similar to automobile crankcase oils, prior to incineration.	PCBs Non-volatile Organics Metals	Direct Contact Groundwater Contamination	Sampling/Analysis Pumped Contaminants Disposal

*Note: Previous removal was completed at site. See Introduction for details.

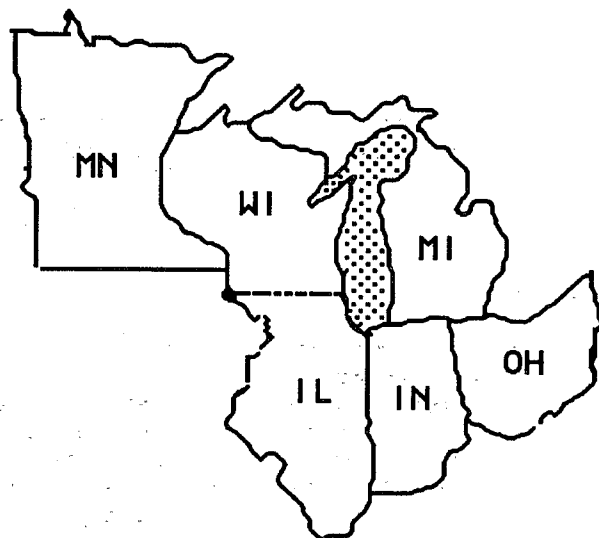
REGION 4

Superfund Emergency Response Actions

Site Information	Incident Category/Description	Primary Contaminants	Threat(s)	Mitigative Action(s)
Name Inman Warehouse City Inman State SC NPL N Cost \$110,000 Start Date 01/21/88 Completion Date 08/18/88	Other Approximately 130 containers, drums and carboys containing metal plating wastes were illegally stored at the Inman warehouse. Ninety percent of the containers were leaking.	Cyanide Metals	Air Contamination/Inhalation Direct Contact	Sampling/Analysis Overpacked Drums Disposal
Name Nichols Air Strip City Nichols State SC NPL N Cost \$490,000 Start Date 04/05/88 Completion Date 05/27/88	Inactive Production Facility The site consisted of approximately one-half acre of soil contaminated with pesticides from an aerial spraying operation. A residential area is adjacent.	Pesticides	Direct Contact	Sampling/Analysis Excavation Disposal
Name Galloway Pits+ City Galloway State TN NPL Y Cost \$690,000 Start Date 06/25/87 Completion Date 10/10/87	Other This 10-acre site contained a series of old gravel pits used for permitted dumping of wastes, including pesticides.	Pesticides	Direct Contact Drinking Water Contamination Groundwater Contamination Soil Contamination Surface Water Contamination	Site Security Sampling/Analysis Solidified Materials Excavation Containment/Retention Capping Disposal

+Note: Previous removal was completed at site. See Introduction for details.

U. S. EPA REGION 5



For Information Contact:

**Chief, Emergency and
Enforcement Response Branch,
Waste Management Division
230 S. Dearborn Street
Chicago, IL 60604
(312) 886-6236**



REGION V COMPLETIONS LISTED IN VOLUMES I AND II

ILLINOIS

A & F Materials Reclaiming
Abandoned Drum
A-Chemical
Album Incinerator
Belvidere Municipal Landfill
Blue Cyanide Chips
Byron/Johnson Salvage Yard
Chicago Drum
Cyanide Incident
Danville Plating
Dead Creek
Floyd Hutter
Gebhart Fertilizer
Hixon Plating
LaSalle Electric Utilities
Liquid Dynamics
Sorrento Site
Stewart Drum
US Scrap

INDIANA

Abandoned Drum - CG
Bennett Stone Quarry
Bloomington Capacitor Site
Cantu Well
Dowden Landfill
Elkhart Site
Envirochem Corp.
Gary Dog Pound
I - 69
Indiana Refinery
Lake Sandy Jo (M&M Landfill)
Lemon Lane Landfill
Main Street Well
Meyers Dump
Michigan City Drums
Midco I
Midwest Plating
Midwest Plating-Kokomo
Monon Waterworks
Poer Farm
Portage Drums

INDIANA (Cont.)

R.J. Trucking
Seymour Recycling Corp.
Shelton Wells
Steel Container
Sycamore Street
Tyler Street Drums
Wedzeb Enterprises

MICHIGAN

Abandoned Drums - Ecorse
Berlin & Farro
Carter Industrial
Chemical Drum - CG
Drums on Beach - CG
Duell and Gardner Landfill
East Bay Site
Fort & Scotten Streets
International Disc Corp.
Liquid Disposal, Inc.
Midnight Dumping - Detroit
Millpoint (Spring Lake)
Mt. Elliot Drum
Niles Township
Northernair Plating
Ott/Story/Cordova
PBM Enterprises
Peerless Plating
Rasmussen's Dump
Rose Township Dump
Saginaw Painting Co.
Verona Well Field

MINNESOTA

Bow Chemical
Isanti Solvent Sites
Lehillier/Mankato Site
Rumple Junkyard
St. Louis River - CG
Union Scrap Iron and Metal Co.

OHIO

Aeroquip/Republic Hose
American Steel Drum
Anaconda Road Site
Asbestos Bags
Central Waste landfill
Chem-Dyne
Chemical Minerals Reclamation
G P & K, Inc.
Greiners Lagoon
Hytech Chrome
J.C. Haynes
J.V. Peters
Laskin/Poplar Oil Co.
Liquid Waste Management
Old Mill
Petroleum Power & Maintenance
Raser Tannery
Seaway Warehouse
Skiljan/Dial
Summit Equipment & Supplies
Summit National
T.P. Long
United Scrap Lead Co.
Valleywood Subdivision
W. 58th Street Drum Site
Wade Park Chemicals

WISCONSIN

Better Brite - Chrome
C-Way
Malleable Range Co.
Oak Creek
Oconomowoc Electroplating Inc.
Reuping Leather Co.
Rodgers Laboratories
Schmalz Dump
Spectro Chemical
Wausau Groundwater Contamination

REGION 5

Superfund Emergency Response Actions

Site Information	Incident Category/Description	Primary Contaminants	Threat(s)	Mitigative Action(s)
Name Autocrat Corp City New Athens State IL NPL N Cost \$135,000 Start Date 03/25/87 Completion Date 12/22/87	Inactive Production Facility There are approximately 50 55-gallon drums, four sludge tanks, 50 PCB capacitors, 12 fiber drums, 170 5-gallon pails, 50 cubic yards of foundry ash, and an asbestos boiler wrap in several deteriorated buildings.	PCBs Asbestos Volatile Organics Solvents	Air Contamination/Inhalation Direct Contact Fire/Explosion Hazard	Site Security Sampling/Analysis Organized Materials Neutralized Materials Bulk Materials Disposal AT: Thermal Destruction
Name Chem Pac City Chicago State IL NPL N Cost \$44,800 Start Date 06/04/87 Completion Date 03/31/88	Inactive Production Facility Approximately 500 lab reagent bottles and pails were left in an abandoned lab.	Acids Bases Solvents	Direct Contact Fire/Explosion Hazard	Site Security Sampling/Analysis Bulk Materials Disposal
Name Lusher St. Groundwater City Elkhart State IN NPL N Cost \$21,825 Start Date 11/27/87 Completion Date 12/31/87	Other During routine sampling the Elkhart County Health Dept. discovered high levels of contamination in private wells. Trichloroethene and trichloroethane are present.	Volatile Organics	Drinking Water Contamination	Provided Hookups to Water Main AT: Physical-Carbon Adsorption
Name Lusher St. Groundwater + City Elkhart State IN NPL N Cost \$13,225 Start Date 06/09/88 Completion Date 08/31/88	Other Sampling by the County Health Dept. found further contamination in additional private wells. Trichloroethene and trichloroethane were present.	Volatile Organics	Drinking Water Contamination	Provided Hookups to Water Main AT: Physical-Carbon Adsorption
Name Ninth Ave. Dump City Gary State IN NPL Y Cost \$92,500 Start Date 09/14/87 Completion Date 10/14/87	Midnight Dump About 10,000 drums were dumped indiscriminantly. They consisted of oil, paint, solvents, tires, resins, acids, and waste chemicals.	Metals Solvents	Direct Contact Ecological Damage Groundwater Contamination Soil Contamination	Site Security

•Note: Previous removal was completed at site. See Introduction for details.

REGION 5

Superfund Emergency Response Actions

Site Information	Incident Category/Description	Primary Contaminants	Threat(s)	Mitigative Action(s)
Name Tri-State Plating + City Columbus State IN NPL Y Cost \$174,000 Start Date 11/06/87 Completion Date 12/18/87	Inactive Waste Management Facility Drums are indiscriminantly staged and there is evidence of soil contamination. Site is 800 feet from the city's secondary municipal wellfield.	Cyanide Metals	Direct Contact Air Contamination/Inhalation Groundwater Contamination	Excavation Pumped Contaminants Site Restoration Disposal
Name Westville Oil (Cam-Or) City Westville State IN NPL N Cost \$1,418,000 Start Date 03/20/87 Completion Date 12/09/87	Inactive Waste Management Facility The facility's cooling pond, into which the site drains, was nearly full and had a history of overflowing. PCB contamination is documented at the site.	PCBs Solvents Volatile Organics	Direct Contact Groundwater Contamination Soil Contamination Surface Water Contamination	Site Security Sampling/Analysis Excavation Pumped Contaminants Solidified Materials Disposal AT: Dewatering/ Solidification
Name Cannelton Industries City Sault St. Marie State MI NPL Y Cost \$100,000 Start Date 06/11/88 Completion Date 07/01/88	Inactive Production Facility The site was used as a landfill for tannery waste. Smouldering fires have been occuring for the past several years.	Metals	Direct Contact Fire/Explosion Hazard Surface Water Contamination	Site Security Sampling/Analysis Migration Control
Name International Disk Corp + City Ellsworth State MI NPL N Cost \$361,400 Start Date 07/10/87 Completion Date 10/11/87	Inactive Production Facility Closed metal plating facility has contaminated plating baths, PCB transformers, painting equipment, waste, and friable asbestos.	PCBs Asbestos Cyanide Acids	Direct Contact Surface Water Contamination	Sampling/Analysis Bulk Materials Disposal

+Note: Previous removal was completed at site. See Introduction for details.

REGION 5

Superfund Emergency Response Actions

Site Information	Incident Category/Description	Primary Contaminants	Threat(s)	Mitigative Action(s)
Name Plating Equipment Used City Detroit State MI NPL N Cost \$223,700 Start Date 08/06/87 Completion Date 12/31/87	Inactive Waste Management Facility An estimated 200 drums and 50 vats were found onsite, some with cyanide levels up to 100,000 parts per million. Soils were contaminated with cyanides and heavy metals.	Cyanide Metals Acids	Direct Contact Groundwater Contamination Soil Contamination Food Chain Contamination	Site Security Sampling/Analysis Overpacked Drums Excavation Disposal
Name Revere Copper + Brass City Detroit State MI NPL N Cost \$58,000 Start Date 03/15/88 Completion Date 04/17/88	Inactive Production Facility PCB-contaminated oil was dumped from transformers onto the ground. Oil pools are within 20 feet of the Detroit River.	PCBs	Direct Contact Groundwater Contamination Surface Water Contamination	Sampling/Analysis Overpacked Drums Excavation Organized Materials Disposal
Name Selkirk-Benham St. City Detroit State MI NPL N Cost \$23,500 Start Date 05/23/87 Completion Date 10/02/87	Midnight Dump Sixteen drums of rubber waste were dumped off of a pick-up truck at a residential property.	Solvents Non-Hazardous Materials	Air Contamination/Inhalation Direct Contact	Disposal
Name S.E.R. Plating City Kalamazoo State MI NPL N Cost \$137,660 Start Date 04/29/87 Completion Date 10/12/87	Inactive Production Facility Approximately 20,000 gallons of hazardous waste were staged indiscriminantly on the site of a closed plating facility.	Cyanide Acids	Direct Contact Fire/Explosion Hazard	Site Security Disposal
Name Stevenson Road Drum City Clinton Township State MI NPL N Cost \$10,800 Start Date 09/04/87 Completion Date 10/02/87	Midnight Dump A total of 101 unlabeled drums were dumped in the vicinity of Stevenson Road.	Acids Non-Hazardous Materials	Direct Contact Soil Contamination	Sampling/Analysis Overpacked Drums Disposal

*Note: Previous removal was completed at site. See Introduction for details.

REGION 5

Superfund Emergency Response Actions

Site Information	Incident Category/Description	Primary Contaminants	Threat(s)	Mitigative Action(s)
Name American Steel Drum + City Bedford State OH NPL N Cost \$1,036,621 Start Date 12/07/87 Completion Date 06/10/88	Inactive Production Facility A deteriorated building contained a 2,500-gallon pit and assorted wastes. The site also contained a large ash pile and an oil pit. PCB contamination was documented.	PCBS Cyanide Pesticide Metals Solvents	Direct Contact Soil Contamination Surface Water Contamination	Excavation Disposal
Name Chemco City Astabula State OH NPL N Cost \$60,000 Start Date 11/04/86 Completion Date 03/31/88	Inactive Production Facility An abandoned chemical supply company left rooms stacked from floor to ceiling with incompatible chemicals. Many were not labeled.	Volatile Organics Metals Acids Low-Level Radioactive Waste	Direct Contact Fire/Explosion Hazard	Site Security Sampling/Analysis Overpacked Drums Disposal
Name Commercial Oil City Oregon State OH NPL N Cost \$1,463,000 Start Date 02/01/88 Completion Date 06/09/88	Inactive Production Facility This closed facility contained deteriorating drums, tanks, ponds, lagoons, tanker trucks, and a contaminated landfill area.	PCBs	Direct Contact Surface Water Contamination	Pumped Contaminants Overpacked Drums Excavation Disposal AT: Physical Carbon Adsorption
Name Greiners Lagoon + City Fremont State OH NPL N Cost \$519,250 Start Date 08/19/87 Completion Date 06/10/88	Inactive Waste Management Facility Ponds, created to dispose of waste oil, had a history of overflowing. The water and oil wastes were known to be contaminated.	PCBS Waste Oils	Direct Contact Groundwater Contamination Soil Contamination Surface Water Contamination	Excavation Organized Materials Solidification Disposal
Name K + S Circuits City Phillisburg State OH NPL N Cost \$359,000 Start Date 03/28/88 Completion Date 07/01/88	Inactive Production Facility This facility was abandoned, leaving copper etching wastes throughout the site.	Acids Bases	Direct Contact Groundwater Contamination Soil Contamination	Sampling/Analysis Bulked Materials Site Restoration Disposal

+Note: Previous removal was completed at site. See Introduction for details.

REGION 5

Superfund Emergency Response Actions

Site Information	Incident Category/Description	Primary Contaminants	Threat(s)	Mitigative Action(s)
Name Laskin/Poplar Oil + City Jefferson State OH NPL Y Cost \$4,255 Start Date 12/21/87 Completion Date 12/21/87	Inactive Waste Management Facility Liquids stored in tanks and ponds onsite contained heavy metals, PCBs, and other organics. The fence installed in an earlier action was in need of repair.	PCBs Waste Oils Metals Solvents	Direct Contact Drinking Water Contamination Surface Water Contamination	Site Security
Name Reliable Plating Co City Findlay State OH NPL N Cost \$294,793 Start Date 03/31/88 Completion Date 09/19/88	Inactive Production Facility An estimated 10,000 to 12,000 gallons of processing waste were stored in deteriorating vats and drums at this defunct plating company.	Cyanides Metals Acids	Direct Contact Drinking Water Contamination Groundwater Contamination Soil Contamination	Excavation Disposal
Name Summit National Liquid + City Deerfield Twp. State OH NPL Y Cost \$363,326 Start Date 03/26/87 Completion Date 05/19/88	Inactive Waste Management Facility Over 20,000 deteriorating drums and numerous bulk tanks were stored above and below ground at this site. A contaminated waste lagoon had deteriorated and overflowed.	PCBs Cyanide Volatile Organics Pesticides Waste Oils Acids Solvents	Direct Contact Drinking Water Contamination Fire/Explosion Hazard Groundwater Contamination Soil Contamination Surface Water Contamination	Pumped Contaminants Organized Materials Temporary Storage
Name Better Brite III/Chippewa City Chippewa State WI NPL N Cost \$94,000 Start Date 05/04/87 Completion Date 04/01/88	Inactive Production Facility Hazardous materials were improperly stored in drums, plating tubes, pails, roll off boxes and vats at this facility. Visible soil contamination was evident.	Cyanide Metals Acids	Direct Contact	Site Security Sampling/Analysis Disposal
Name Chem Sciences City Germantown State WI NPL N Cost \$387,000 Start Date 04/06/87 Completion Date 03/10/88	Inactive Production Facility The site was accessible with many scattered drums, pools of standing fluids, and stressed vegetation. Workers had dumped some drum contents onto the ground.	Acids Solvents	Direct Contact Fire/Explosion Hazard Groundwater Contamination Soil Contamination	Sampling/Analysis Organized Materials Overpacked Drums Excavation Site Restoration Disposal

Note: Previous removal was completed at site. See Introduction for details.

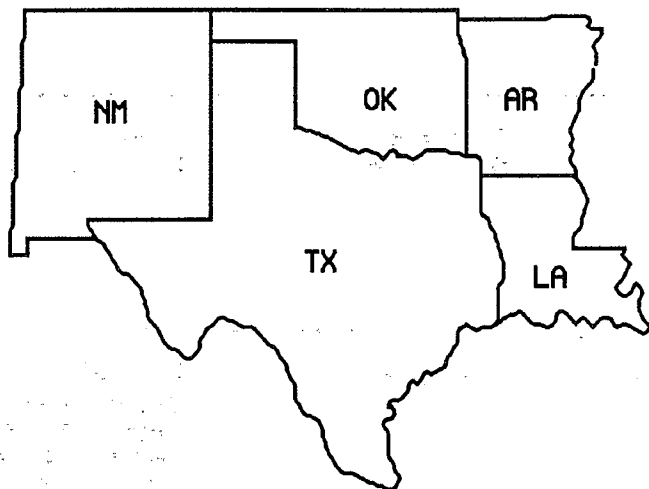
REGION 5

Superfund Emergency Response Actions

Site Information	Incident Category/Description	Primary Contaminants	Threat(s)	Mitigative Action(s)
Name Lakewood City Lakewood State WI NPL N Cost \$25,000 Start Date 06/27/88 Completion Date 07/21/88	Other This was an emergency removal action to include additional homes on a municipal water line.	Volatile Organics	Drinking Water Contamination	Provided Hookups to Water Main
Name Lubricants, Inc. City West Allis State WI NPL N Cost \$12,000 Start Date 08/28/87 Completion Date 11/18/87	Inactive Waste Management Facility Numerous tanks of oil waste, some leaking acidic sludge, were on site at this closed facility. Children were known to play around the tanks.	Waste Oils Solvents	Direct Contact Fire/Explosion Hazard	Site Security Sampling/Analysis
Name Try Chem Corp City Milwaukee State WI NPL N Cost \$288,600 Start Date 11/16/87 Completion Date 05/25/88	Inactive Production Facility Vats, pits and drums on site contained hazardous materials. The drums were deteriorated and vandalism had occurred.	Volatile Organics Acids Solvents	Direct Contact	Site Security Sampling/Analysis Pumped Contaminants Containment/Retention Bulked Materials Site Restoration Disposal

+Note: Previous removal was completed at site. See Introduction for details.

U. S. EPA REGION 6



For Information Contact:

**Chief, Emergency Response
Branch, Environmental
Services Division
1445 Ross Avenue
Dallas, TX 75202
(214) 655-2270**



REGION VI COMPLETIONS LISTED IN VOLUMES I AND II

ARKANSAS

Allen Transformer
Batesville Landfill Fire
Greens PCB Drums

LOUISIANA

Barge Star 7 - CG
Cleve Reber
Old Inger Oil Refinery
Stonewall Drug Dump
W. J. Oil Co.

NEW MEXICO

Argent Corporation
Cimarron Mining Site
Pronto Services
S. Valley PCB Tank Site

OKLAHOMA

10th Street Frazier Pits
Duncan Transformer Site
Haddock Airport
Jack Dennis Pesticide Burnsite
Tar Creek (Ottawa County)
Wheatland Drum

TEXAS

301 Main Street
Acrylonitril Spill
Aggie Chemical
Amoco Dock 31 - CG
Barker Chemical
Bestplate Inc.
Bio-Ecology Systems, Inc.
Cargo Ship Explosion

TEXAS (Cont)

Chemical Drums - Padre Island - CG
Crystal Chemical Co.
Crystal City Airport
Dempsey Residence
French, Ltd.
Geneva Ind/Fuhrmann Energy Corp.
Heritage/Laurel
Highlands Acid Pit
Holley Residence
Houston Ship Channel
J + J Plastics
Matagorda Island - CG
Midnight Dump - CG
Motco, Inc.
Near Wills Point
Niagara Chemical
Padre & Mustang Islands 86 - CG
Padre & Mustang Islands I - CG
Padre & Mustang Islands II - CG
Padre & Mustang Islands III - CG
Padre Island IV (Leguna Madre) - CG
Panther Creek - CG
Pesses Chemical
Petro-Chemical Systems
Pirates Beach - CG
Ship Channel - CG
Sikes Disposal Pits
Skylark (Yates Residence)
South Acres
South of Waco
Stewco, Inc.
Styrene Spill - CG
Texarkana Woodpreserving
Triangle Chemical Co.
Winkler Road

REGION 6

Superfund Emergency Response Actions

Site Information	Incident Category/Description	Primary Contaminants	Threat(s)	Mitigative Action(s)
Name Mountain Pine Pressure Treating City Plainview State AR NPL N Cost \$500,000 Start Date 12/11/87 Completion Date 04/13/88	Inactive Production Facility Lagoons and tanks of liquid pentachlorophenol were leaking into drinking water supplies at this closed wood treatment facility.	Dioxin Pesticides Metals	Direct Contact Drinking Water Contamination	Site Security Pumped Contaminants Solidified Materials Excavation Capping Temporary Storage Site Restoration Disposal AT: Physical-Carbon Adsorption
Name Old Henley City Norphlet State AR NPL N Cost \$10,000 Start Date 08/18/87 Completion Date 12/15/87	Inactive Waste Management Facility The site consisted of 5 acidic waste oil pits, approximately 275 scattered drums, and three storage tanks. These were abandoned when the facility closed.	Waste Oils Metals	Air Contamination/Inhalation Direct Contact Soil Contamination	Site Security
Name American Creosote City Winnfield State LA NPL N Cost \$148,000 Start Date 03/28/88 Completion Date 05/04/88	Inactive Production Facility The site was an abandoned facility with unlimited access and contaminated with waste oils and sludges. The facility consisted of storage tanks, a sludge pit, a lagoon, a pond, and a chemical laboratory.	Waste Oils Solvents	Air Contamination/Inhalation Direct Contact Groundwater Contamination Soil Contamination Surface Water Contamination	Sampling/Analysis
Name American Creosote + City Winnfield State LA NPL N Cost \$148,000 Start Date 06/01/88 Completion Date 07/21/88	Inactive Production Facility A lagoon and pond on-site were overflowing with sludges and contaminated waste oils from the closed wood treatment plant.	Waste Oils Solvents	Air Contamination/Inhalation Direct Contact Groundwater Contamination Soil Contamination Surface Water Contamination	Pumped Contaminants Containment AT: Physical-Carbon Adsorption

Note: Previous removal was completed at site. See Introduction for details.

REGION 6

Superfund Emergency Response Actions

Site Information	Incident Category/Description	Primary Contaminants	Threat(s)	Mitigative Action(s)
Name Old Inger Oil Refinery + City Darrow State LA NPL Y Cost \$30,000 Start Date 08/23/88 Completion Date 08/26/88	Inactive Waste Management Facility Lagoons and ponds holding contaminated waste overflow were eroded and threatened to spill. A berm had deteriorated significantly.	Volatile Organics Metals Solvents	Direct Contact Soil Contamination Surface Water Contamination	Site Security Migration Control
Name South Valley/Whitfield City Albuquerque State NM NPL Y Cost \$15,000 Start Date 03/16/88 Completion Date 04/26/88	Other The site was scattered with open drums of antifreeze, surficant and used motor oil from a truck cleaning operation. There were also two tank cars of sulfuric acid and tar.	Acids	Direct Contact Groundwater Contamination Soil Contamination Surface Water Contamination	Pumped Contaminants Disposal AT: Chemical Neutralization
Name Compass Ind. (Avery Drive) City Tulsa State OK NPL Y Cost \$65,000 Start Date 05/26/88 Completion Date 06/29/88	Inactive Waste Management Facility The site contained hazardous industrial wastes at depths of up to 30 feet, including drums of contaminated soils.	PCBs Pesticides Waste Oils Metals Acids Solvents	Air Contamination/Inhalation Direct Contact Groundwater Contamination Soil Contamination Surface Water Contamination	Site Security Temporary Storage
Name American Thio-Chem City Fort Worth State TX NPL N Cost \$1,300,000 Start Date 06/09/88 Completion Date 09/28/88	Inactive Production Facility This site was a condemned warehouse containing a pesticide formulating facility, two laboratories, assorted chemicals, pesticides, and chemicals. Vandalism had occurred.	Metals Acids Solvents	Direct Contact Fire/Explosion Hazard	Site Security Sampling/Analysis Overpacked Drums Organized Materials Site Restoration Disposal AT: Thermal Destruction
Name Best Plate, Inc. + City Hutchins State TX NPL N Cost \$245,000 Start Date 03/09/88 Completion Date 05/25/88	Inactive Production Facility Highly acidic and basic compounds stored in open replating-waste vats were in danger of leaking.	Acids Bases	Direct Contact	Sampling/Analysis Organized Materials Bulked Materials Disposal

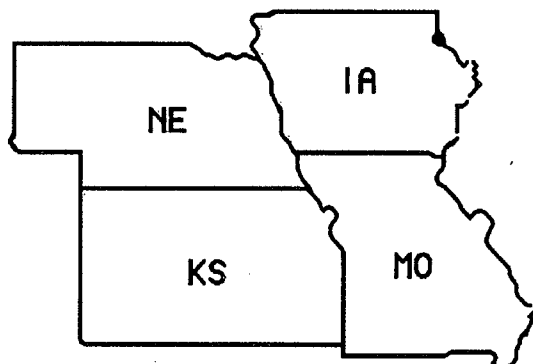
+Note: Previous removal was completed at site. See Introduction for details.

Superfund Emergency Response Actions

Site Information	Incident Category/Description	Primary Contaminants	Threat(s)	Mitigative Action(s)
Name Crystal City Airport + City Houston State TX NPL Y Cost \$10,000 Start Date 06/01/88 Completion Date 06/03/88	Other Areas surrounding the hangers at this airport were contaminated with pesticides from crop dusting operations.	Pesticides	Soil Contamination	Site Security Capping
Name Jefferson Road Drum City Grand Praire State TX NPL N Cost \$30,000 Start Date 08/11/88 Completion Date 08/16/88	Midnight Dump Thirty 55-gallon drums were dumped and submerged in a local creek.	Metals	Air Contamination/Inhalation Direct Contact Surface Water Contamination	Organized Materials Sampling/Analysis Disposal
Name Love Residence City Friendswood State TX NPL N Cost \$1,364,527 Start Date 03/12/87 Completion Date 10/16/87	Midnight Dump A residential lawn was found to be contaminated with radioactive soil, which had been introduced as fill dirt.	Low-level Radioactive Waste	Direct Contact	Sampling/Analysis Excavation Site Restoration Disposal
Name Senuta Residence City Friendswood State TX NPL N Cost \$1,039,040 Start Date 03/09/87 Completion Date 10/16/87	Midnight Dump A radiation survey overflight revealed this residential lawn to have radiation contaminated soil. This resulted from the introduction of radioactive fill dirt.	Low-level Radioactive Waste	Direct Contact	Sampling/Analysis Excavation Site Restoration Disposal
Name Sikes Disposal Pits + City Crosby State TX NPL Y Cost \$182,000 Start Date 03/07/88 Completion Date 04/09/88	Inactive Waste Management Facility Five pits of unsegregated wastes and a large number of drums were on the site of this closed facility. Children had played at the site regularly.	Solvents	Soil Contamination Surface Water Contamination	Site Security

+Note: Previous removal was completed at site. See Introduction for details.

U. S. EPA REGION 7



For Information Contact:

**Chief, Emergency Planning
and Response Branch,
Environmental Services Division
25 Funston Road
Kansas City, KS 66115
(913) 236-3888**



REGION VII COMPLETIONS LISTED IN VOLUMES I AND II

IOWA

Aidex Corp.
Curtis Animal Products
Michael Battery

KANSAS

Beauty Rose Chemical
John's Refinery
Richmond Street Drum

MISSOURI

Bliss/Frontenac
Blue River Flood
Cashel Property
Chesterfield Tank
Community Christian Church
Dearborn Drums
Ellisville Site (Callahan)
Erwin Farm
Flood Damage
Franklin/Gimblin St.
Holly Street Drum Site
Lacy Manor Drive
Mexico Feed & Seed
Neosho Wastewater Treatment School
Nodaway Drums
North-U Drive PCBs
North-U Drive Well Contamination
Rockwood School District
Rose Chemical
Rusha Farm
Solid State Circuits
Sullins Residence
Talley Farm
Tholozan Street Site
Valley Garden Drive
Weaver Drums

NEBRASKA

Economy Products
Environmental Services, Inc.
Marcy Street
Murdock Groundwater

REGION 7

Superfund Emergency Response Actions

Site Information	Incident Category/Description	Primary Contaminants	Threat(s)	Mitigative Action(s)
Name Eginore Fertilizer City Lorimor State IA NPL N Cost \$218,300 Start Date 03/13/87 Completion Date 03/03/88	Inactive Production Facility This site consisted of four deteriorating storage buildings, five decaying above-ground storage tanks, and approximately two tons of buried chemicals.	Pesticides	Direct Contact Drinking Water Contamination	Sampling/Analysis Organized Materials Excavation Disposal
Name Cherokee County(Tri-State)+ City Cherokee County State KS NPL Y Cost \$1,000 Start Date 10/14/87 Completion Date 09/20/88	Inactive Production Facility As a result of past mining practices the groundwater throughout this county was contaminated with metals. This action was to add distillation units at two additional residences.	Metals	Drinking Water Contamination	AT: Physical-Filtration/Exchange
Name Roe Lane Tank City Kansas City State KS NPL N Cost \$31,400 Start Date 10/29/87 Completion Date 02/05/88	Other A 6,000-gallon tank containing plating wastes and a three-inch surface layer of sludge was abandoned on an eroded streambank. Soil contamination was evident.	Metals Solvents	Direct Contact Surface Water Contamination	Pumped Contaminants Bulked Materials Excavation Disposal
Name Baldwin Park City Aurora State MO NPL N Cost \$140,000 Start Date 11/16/87 Completion Date 03/02/88	Inactive Waste Management Facility Due to dumping of filter cake wastes by a pharmaceutical company, there was widespread dioxin contamination at this abandoned dump.	Dioxin	Direct Contact Soil Contamination	Site Security Excavation Capping Site Restoration AT: Thermal Destruction
Name B & B Salvage City Warrensburg State MO NPL N Cost \$1,053,350 Start Date 05/26/87 Completion Date 03/31/88	Other The facility received over 450 PCB-contaminated transformers which had not been properly neutralized. Resulting soil contamination has spread off site.	PCBs	Direct Contact Soil Contamination	Site Security Excavation Site Restoration Disposal AT: Recycling

*Note: Previous removal was completed at site. See Introduction for details.

REGION 7

Superfund Emergency Response Actions

Site Information		Incident Category/Description	Primary Contaminants	Threat(s)	Mitigative Action(s)
Name	Broadway Salvage Oil #1	Midnight Dump	PCBs	Direct Contact	Sampling/Analysis
City	St. Louis	Unknown persons dumped		Soil Contamination	Excavation
State	MO	PCB-contaminated oil from seven transformer casings causing widespread soil contamination.			Site Restoration
NPL	N				Disposal
Cost	\$205,710				
Start Date	11/16/87				
Completion Date	02/16/88				
Name	Castlewood Community Site +	Other	Dioxin	Direct Contact	Excavation
City	St. Louis	Waste oil contaminated with TCDD (Dioxin) was sprayed over a dirt/gravel road, exposing residential, commercial, and public properties.		Soil Contamination	Temporary Relocation
State	MO				Temporary Storage
NPL	N				
Cost	\$8,630,565				
Start Date	07/01/85				
Completion Date	05/20/88				
Name	Crooked River Drums	Midnight Dump	Solvents	Direct Contact	Sampling/Analysis
City	Ray County	Four unmarked drums were discovered abandoned between an unpaved road and the bank of a river.		Soil Contamination	Pumped Contaminants
State	MO			Surface Water Contamination	Disposal
NPL	N				
Cost	\$2,000				
Start Date	09/02/88				
Completion Date	09/02/88				
Name	Delmar Street Drums	Midnight Dump	Metals	Direct Contact	Sampling/Analysis
City	St. Louis	Leaking 55-gallon drums were discovered during an excavation in a residential area.	Solvents	Fire/Explosion Hazard	Overpacked Drums
State	MO	Further analysis revealed 287 drums containing flammable paint wastes and potential heavy metal contamination.		Soil Contamination	Disposal
NPL	N				AT: Thermal Destruction
Cost	\$342,227				
Start Date	06/22/87				
Completion Date	06/02/88				
Name	Dickhoener PCB Site	Other	PCBs	Direct Contact	Sampling/Analysis
City	Cuba	Several drums and cans of PCB-contaminated oil and filter material were found stored in a rural residential shed.		Soil Contamination	Overpacked Drums
State	MO				Excavation
NPL	N				Disposal
Cost	\$21,600				
Start Date	04/18/88				
Completion Date	06/01/88				

+Note: Previous removal was completed at site. See Introduction for details.

REGION 7

Superfund Emergency Response Actions

Site Information	Incident Category/Description	Primary Contaminants	Threat(s)	Mitigative Action(s)
Name Jackson St. Drums City Kansas City State MO NPL N Cost \$5,000 Start Date 07/19/88 Completion Date 07/19/88	Midnight Dump Ten drums of unknown materials were dumped on an abandoned lot in a residential downtown neighborhood.	Volatile Organics	Direct Contact Fire/Explosion Hazard Soil Contamination	Organized Materials Disposal
Name Minker/Stout/Romaine Creek City Imperial State MO NPL Y Cost \$3,372,525 Start Date 05/30/83 Completion Date 10/11/87	Midnight Dump Dioxin-contaminated fill was deposited on residences near the Minker residence. Concentrations of dioxin reached 348 parts per billion.	Dioxin	Direct Contact Soil Contamination	Site Security Sampling/Analysis Excavation Temporary Relocation Migration Control Temporary Storage
Name Odessa Manufacturing Co. City Maysville State MO NPL N Cost \$4,000 Start Date 09/02/88 Completion Date 09/02/88	Inactive Production Facility Three drums of flammable solvent liquids were abandoned at a former manufacturing facility.	Solvents	Fire/Explosion Hazard	AT: Recycling
Name Quail Run Mobile Manor City Gray Summit State MO NPL Y Cost \$9,166,524 Start Date 05/16/83 Completion Date 12/15/87	Other Dioxin contamination was discovered on roads, roadsides, yards, and in at least one mobile home interior at a trailer park containing 32 occupied units.	Dioxin	Direct Contact Soil Contamination	Temporary Relocation Excavation Site Restoration Temporary Storage
Name Robert Street Drums City Kansas City State MO NPL N Cost \$11,850 Start Date 09/02/88 Completion Date 09/02/88	Midnight Dump Five drums of extremely volatile solvents were abandoned in a storage shed on a residential rental property. Summer heat caused the bung seals on two of them to burst.	Solvents	Direct Contact Fire/Explosion Hazard	Temporary Storage Disposal

+Note: Previous removal was completed at site. See Introduction for details.

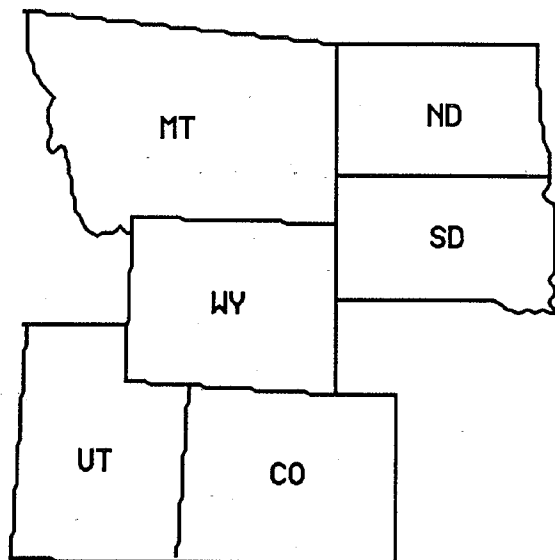
REGION 7

Superfund Emergency Response Actions

Site Information		Incident Category/Description	Primary Contaminants	Threat(s)	Mitigative Action(s)
Name	Store Safe Explosives	Other EPA assistance was requested to remove illegally stored explosives and reactive chemicals from a rental storage facility.	Volatile Organics	Fire/Explosion Hazard	Organized Materials Disposal Detonation
City	Kansas City				
State	MO				
NPL	N				
Cost	\$50,000				
Start Date	04/23/88				
Completion Date	08/09/88				
Name	Hoffman Drums	Other A drum recycler passed away, leaving his widow with seven deteriorating drums containing trichloroethylene.	Volatile Organics	Direct Contact Air Contamination/Inhalation	Overpacked Drums Disposal
City	Alliance				
State	NE				
NPL	N				
Cost	\$15,000				
Start Date	10/05/87				
Completion Date	12/07/87				

+Note: Previous removal was completed at site. See Introduction for details.

U. S. EPA REGION 8



For Information Contact:

**Chief, Emergency Response
Branch, Waste Management
Division
One Denver Place
999 18th Street, Suite 500
Denver, CO 80202-2405
(303) 293-1723**



REGION VIII COMPLETIONS LISTED IN VOLUMES I AND II

COLORADO

California Gulch - Maestes Well
Camax Site
Denver Radium - B&C Metals
Eagle Mine
Frejonley
Gene Murren
Herold Site (Black Hawk)
PDC Spas
Woodbury Chemical Co.

MONTANA

Motherlode Facility

NORTH DAKOTA

Arsenic Trioxide
Grand Forks Drum Site
Vaagan-Dahle Farm

SOUTH DAKOTA

Heldt Chemical (SD Services)

UTAH

Green River Cyanide
Montgomery Ward Store
Randall Residence

WYOMING

Ellerby Refining Site
Truck Accident

Superfund Emergency Response Actions

Site Information		Incident Category/Description	Primary Contaminants	Threat(s)	Mitigative Action(s)
Name	Captain Jack Mill	Other Fifteen deteriorating drums, some of them open, were located on a mill and mine site. They were suspected of containing sulfuric acid and unknown organics.	Volatile Organics Acids	Direct Contact Surface Water Contamination	Pumped Contaminants Disposal
City	Ward				
State	CO				
NPL	N				
Cost	\$9,000				
Start Date	12/08/87				
Completion Date	01/28/88				
Name	Englewood DDT	Midnight Dump One-hundred and fifty pounds of DDT powder and containers of other pesticides were deserted in a garden shed. The area was unsecured and considerable spillage had occurred.	Pesticides	Direct Contact Air Contamination/Inhalation	Bulked Materials AT: Thermal Destruction
City	Englewood				
State	CO				
NPL	N				
Cost	\$7,000				
Start Date	05/01/87				
Completion Date	10/21/87				
Name	Farmers Irrigation Ditch	Midnight Dump Nine 55-gallon drums of fiberized aluminum were dumped illegally in an irrigation ditch.	Asbestos Toxic Gases Solvents Metals	Direct Contact Food Chain Contamination Soil Contamination Surface Water Contamination	Sampling/Analysis Organized Materials Excavation Disposal
City	Broomfield				
State	CO				
NPL	N				
Cost	\$25,000				
Start Date	04/30/87				
Completion Date	01/28/88				
Name	Graff Drums	Midnight Dump Thirty-seven drums of liquid plating wastes and six vats of solid residues were dumped in a construction storage yard. Three other drums from the same source were abandoned in a nearby trailer park.	Cyanide Acids	Air Contamination/Inhalation Direct Contact Soil Contamination Surface Water Contamination	Sampling/Analysis Organized Materials Disposal
City	Ft. Morgan				
State	CO				
NPL	N				
Cost	\$52,529				
Start Date	06/30/87				
Completion Date	01/20/88				
Name	High Quality Circuits	Inactive Production Facility Approximately 74 drums were abandoned in an industrial area by a local plating facility.	Cyanides Metals Acids	Air Contamination/Inhalation Direct Contact Surface Water Contamination	Sampling/Analysis Organized Materials Disposal
City	Colorado Springs				
State	CO				
NPL	N				
Cost	\$74,700				
Start Date	09/21/87				
Completion Date	03/29/88				

Note: Previous removal was completed at site. See Introduction for details.

REGION 8

Superfund Emergency Response Actions

Site Information	Incident Category/Description	Primary Contaminants	Threat(s)	Mitigative Action(s)
Name Mule Creek Drums City Adams County State CO NPL N Cost \$8,762 Start Date 06/30/87 Completion Date 11/13/87	Midnight Dump Thirty-four drums were found dumped in a creek bed.	Volatile Organics Solvents	Air Contamination/Inhalation Direct Contact Fire/Explosion Hazard Surface Water Contamination	Organized Materials Sampling/Analysis AT: Recycling
Name Riverside Cemetery Drums City Commerce City State CO NPL N Cost \$12,000 Start Date 05/31/88 Completion Date 07/13/88	Midnight Dump Twelve to fourteen drums were discovered adjacent to a canal along a bike trail. Vandals had foiled local efforts to fence in the drums.	Volatile Organics	Direct Contact Fire/Explosion Hazard Surface Water Contamination	Organized Materials Disposal
Name Rocky Mtn Custom Chrome City Colorado Springs State CO NPL N Cost \$88,000 Start Date 08/27/87 Completion Date 03/08/88	Inactive Production Facility Approximately 20 open or leaking containers of plating solution were found abandoned onsite.	Metals Acids Cyanides	Direct Contact Soil Contamination Air Contamination/Inhalation	Site Security Overpacked Drums Sampling/Analysis Disposal
Name South Adams County Water and Sanitation District City Denver State CO NPL N Cost \$2,933,904 Start Date 06/11/86 Completion Date 09/30/88	Other Public and private wells tapped a shallow aquifer contaminated with trichloroethylene.	Solvents	Air Contamination/Inhalation Drinking Water Contamination	Provided Hookups to Water Main AT: Physical-Carbon Adsorption

+Note: Previous removal was completed at site. See Introduction for details.

Superfund Emergency Response Actions

Site Information		Incident Category/Description	Primary Contaminants	Threat(s)	Mitigative Action(s)
Name	Mill Creek Site (Anaconda)	Other Huge quantities of tailings and granulated slag caused widespread soil contamination.	Metals	Air Contamination/Inhalation Direct Contact	Temporary Relocation
City	Anaconda				
State	MT				
NPL	Y				
Cost	\$0				
Start Date	07/15/86				
Completion Date	09/13/88				
Name	Reliance Refining Co.	Inactive Production Facility Large pools of PCP-contaminated sludge at an abandoned oil refinery were openly accessible and incurred some off-site seepage.	PCPs	Direct Contact	Site Security
City	Kalispell				
State	MT				
NPL	N				
Cost	\$40,470				
Start Date	05/19/88				
Completion Date	05/27/88				
Name	Silver Bow Creek/Walkerville	Other Elevated levels of metals were found adjacent to and migrating into residential areas. The contamination stemmed from tailings piles, once used in mining and milling operations.	Metals	Air Contamination/Inhalation Direct Contact	Site Security Excavation Containment
City	Butte				
State	MT				
NPL	Y				
Cost	\$722,250				
Start Date	02/09/88				
Completion Date	09/30/88				
Name	Wasatch Chemical Co. (Lot 6)	Active Production Facility Forty-eight 55-gallon drums, many small containers and carboys, and 13 deteriorated gas cylinders were left onsite. Several of the drums were leaking.	Dioxin Pesticides Toxic Gases Acids Solvents	Air Contamination/Inhalation Direct Contact Fire/Explosion Hazard Groundwater Contamination	Sampling/Analysis Temporary Storage Detonation
City	Salt Lake City				
State	UT				
NPL	Y				
Cost	\$159,136				
Start Date	03/19/86				
Completion Date	06/30/88				

Note: Previous removal was completed at site. See Introduction for details.

REGION 8

Superfund Emergency Response Actions

Site Information		Incident Category/Description	Primary Contaminants	Threat(s)	Mitigative Action(s)
Name	Buffalo Fire	Active Waste Management Facility A fire at a barrel refurbishing facility caused a release of waste chemicals in the firefighting water, which was contained in a dirt irrigation ditch.	Volatile Organics Solvents	Direct Contact Groundwater Contamination Surface Water Contamination	Pumped Contaminants Organized Materials Disposal
City	Buffalo				
State	WY				
NPL	N				
Cost	\$1,059				
Start Date	01/27/88				
Completion Date	01/28/88				

+Note: Previous removal was completed at site. See Introduction for details.

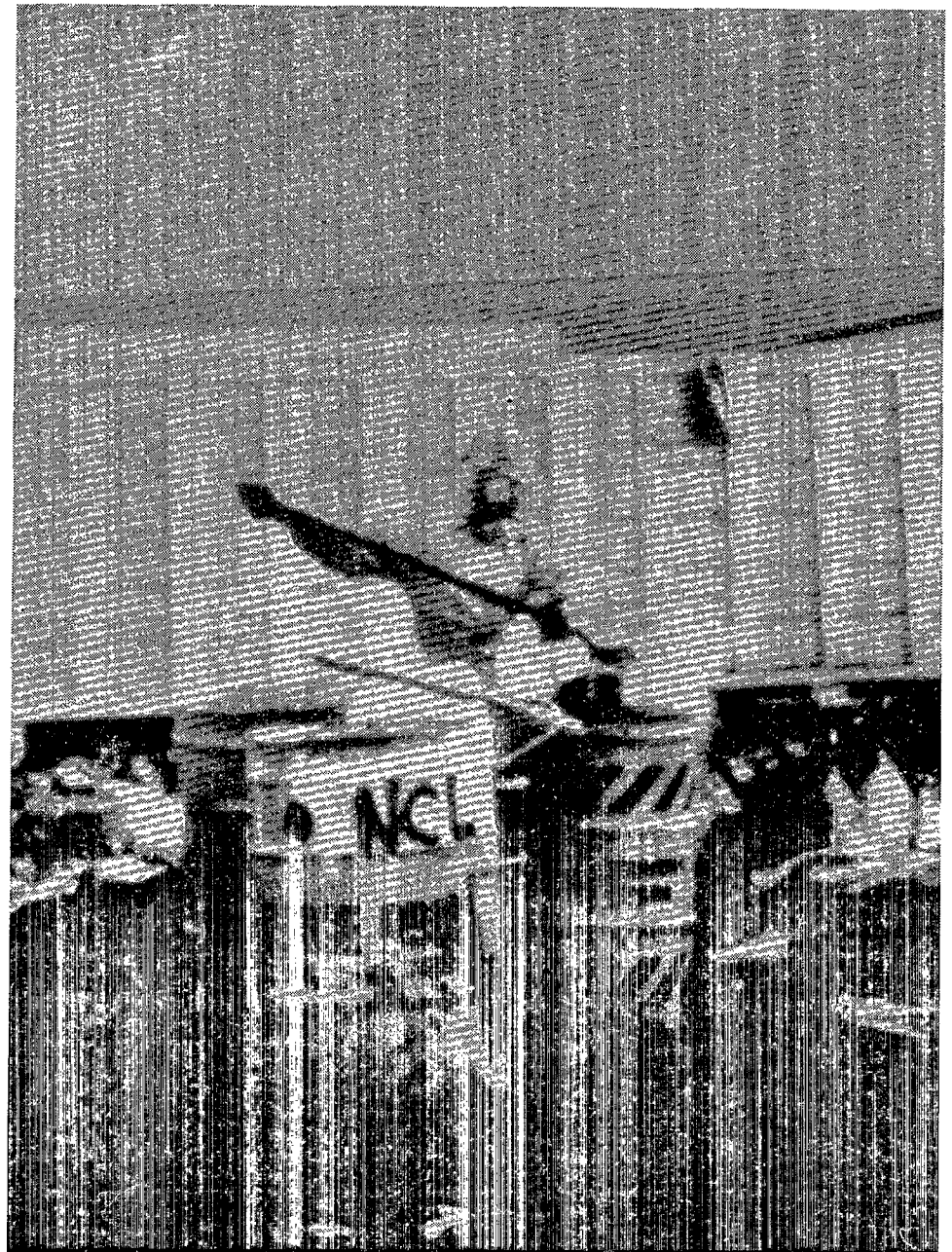
U. S. EPA REGION 9



ALSO: AS
GU
TT

For Information Contact:

**Chief, Emergency Response
Section, Field Operations
Branch, Toxic and Waste
Management Division
215 Fremont Street
San Francisco, CA 94105
(415) 974-7466**



REGION IX COMPLETIONS LISTED IN VOLUMES I AND II

AMERICAN SAMOA

ASPA Power Plant
Satala Power Plant
Tafuna Power Plant
Taputimu Farm

ARIZONA

Dela - Tek
Gila River Indian Reservation
The Chrome Shop
Tuba City Acid Tank

CALIFORNIA

Abandoned Drum - CG
Aero Quality Plating Co.
Angeles National Forest
Arnold Weed Control Site
Bloomfield Avenue
Brown's Field Site
California Bionuclear
California Creative Dynamics
Cherokee Trucking
Copperopolis Site
Crystal Cove Beach - CG
Dixco Chemical Sales
Drainage Ditch
E.C. Kramer
El Monte Site
Floating Drum - CG
Garden Valley Site
Garvey Avenue Site
General Disposal
L. Fricker Co.
Laguna Beach II - CG
Long Beach Drum - CG
McColl
N. Tulip St. - Escondido
Nickel Solution Recycling
Norwalk Drum Site
Operating Industries
Parkside Drive
Purity Oil Sales, Inc.
Rigel Street
ROIC - Sun Valley

CALIFORNIA (Cont.)

Sacramento River - CG
South Bay Asbestos Area
South Half Moon Bay - CG
Standard Chemical Co.
Stringfellow Acid Pits
Tecate Site
Unknown Chemical Drums - CG
Western States Refining
Yucaipa Drug Lab

HAWAII

Hauula Beach Park - CG
F/V Victoria II Keehi Lagoon
PCB Transformers - CG
Pier 35 - CG

NEVADA

Big Spring Ranch
Cyanide Spill
Echo Bay Station
Washoe Drum

TRUST TERRITORIES

PCB Wastes (1 - University of Guam)
PCB Wastes (11 - Harmon)
PCB Wastes (13 - GPA/ Naval Station)
PCB Wastes (14 - CNMI PCB)
PCB Wastes (15 - Saipan)
PCB Wastes (16 - Palau)
PCB Wastes (17 - Marshall Island)
PCB Wastes (18 - Guam Dept. of Public Health)
PCB Wastes (19 - Marshall Island)
PCB Wastes (2 - University of Guam)
PCB Wastes (20 - Marshall Island)
PCB Wastes (21 - Ebeye Pub)
PCB Wastes (25 - Ponape Elect)
PCB Wastes (26 - Ponape)

TRUST TERRITORIES (Cont.)

PCB Wastes (27 - Ponape DPFOR)
PCB Wastes (28 - Ponape)
PCB Wastes (29 - Kosrae)
PCB Wastes (3 - Guam Memorial Hospital)
PCB Wastes (30 - Truk)
PCB Wastes (32 - Yap)

PCB Wastes (33 - Yap)
PCB Wastes (4 - Guam Public Hospital)
PCB Wastes (5 - Guam Dept. of Agriculture)
PCB Wastes (7 - Guam Dept. of Economics)
PCB Wastes (8 - Guam Phys.)
PCB Wastes (9 - Guam PHL)
PCB Wastes (A - Guam Dept. of Education)
PCB Wastes (B - Dela Cruz)
PCB Wastes (C - Majuro Hospital)
PCB Wastes (D - Medical Clinic)
PCB Wastes (F - Prot Yap)
PCB Wastes (G - USCG Loran)

REGION 9

Superfund Emergency Response Actions

Site Information	Incident Category/Description	Primary Contaminants	Threat(s)	Mitigative Action(s)
Name Gila River Site #2 City Maricopa State AZ NPL N Cost \$30,000 Start Date 01/17/88 Completion Date 05/09/88	Midnight Dump Six drums containing suspected pesticides/herbicides were abandoned on the site.	Pesticides	Direct Contact	Overpacked Drums Excavation Disposal
Name Stanford Site #1 City Yuma State AZ NPL N Cost \$101,000 Start Date 03/20/87 Completion Date 11/05/87	Other Approximately 1.5 acres of land were used for storage of farm equipment and pesticides which had leaked and spilled on surrounding soil.	Pesticides	Direct Contact Soil Contamination	Site Security AT: Physical-Carbon Adsorption AT: Biological Biodegradation
Name Stanford Site #2 City Yuma State AZ NPL N Cost \$173,000 Start Date 03/20/87 Completion Date 11/05/87	Other An abandoned trailer contained approximately 90 chemical containers, some of them leaking. There was evidence of buried pesticides and vandalism.	Pesticides	Direct Contact Soil Contamination	Site Security Sampling/Analysis Excavation Disposal
Name Abco Metal Finishing City Monrovia State CA NPL N Cost \$440,000 Start Date 05/06/87 Completion Date 11/17/87	Inactive Production Facility The site contained approximately 36 open topped vats and 250 55-gallon drums. Cyanide and acid solutions had been spilled and hydrogen gas was detected in the air.	Cyanide Acids Bases	Air Contamination/Inhalation Direct Contact Soil Contamination	Sampling/Analysis Temporary Relocation Pumped Contaminants Organized Materials Solidified Materials Excavation Disposal
Name Builders Hardware Finishing City Los Angeles State CA NPL N Cost \$405,000 Start Date 05/23/88 Completion Date 07/15/88	Active Production Facility A fire damaged a metal plating shop housing containers of acids, bases, cyanides, oxidizers, and degreasing solvents. The threat of release of cyanide gas was serious, and resulted in the precautionary evacuation of 11,000 people.	Cyanide Acids Bases Solvents	Air Contamination/Inhalation Direct Contact Surface Water Contamination	Site Security Temporary Evacuation of Population Sampling/Analysis Organized Materials Disposal

†Note: Previous removal was completed at site. See Introduction for details.

REGION 9

Superfund Emergency Response Actions

Site Information	Incident Category/Description	Primary Contaminants	Threat(s)	Mitigative Action(s)
Name Del Norte Pesticide Storage City Crescent City State CA NPL Y Cost \$255,000 Start Date 08/24/87 Completion Date 02/28/88	Inactive Waste Management Facility This one-acre site was used as a county-wide collection point for storage and disposal of pesticide and herbicide containers, many of them partially full.	Pesticides	Groundwater Contamination Soil Contamination Surface Water Contamination Ecological Damage	Sampling/Analysis Excavation Site Restoration Disposal
Name Industrial Waste Processing City Fresno State CA NPL N Cost \$673,877 Start Date 06/20/88 Completion Date 08/18/88	Inactive Waste Management Facility Approximately 250 55-gallon drums of waste solvents and lead solder flux, 50 cubic yards of lead solder waste, and 50 50-pound fiber bags and 30 55-gallon drums of asbestos were on site.	Asbestos Metals Solvents	Air Contamination/Inhalation Direct Contact Drinking Water Contamination Fire/Explosion Hazard Soil Contamination	Site Security Sampling/Analysis Organized Materials Overpacked Drums Bulk Materials Disposal
Name Lorentz Barrel & Drum City San Jose State CA NPL Y Cost \$757,000 Start Date 09/08/87 Completion Date 03/29/88	Inactive Waste Management Facility The soil and aquifer below this site had been contaminated by a wide variety of hazardous materials. Forty thousand mostly empty, and 800 full drums of waste were onsite.	PCBs Pesticides Metals Solvents	Direct Contact Fire/Explosion Hazard Groundwater Contamination Soil Contamination	Sampling/Analysis Organized Materials Neutralized Materials Disposal
Name McColl + City Fullerton State CA NPL Y Cost \$244,000 Start Date 01/25/88 Completion Date 03/31/88	Inactive Waste Management Facility In an earlier action, the site was capped to contain over 250,000 tons of waste and contaminated soil. Seeps and odors were discovered migrating off site from under the cap.	Waste Oils Acids	Air Contamination/Inhalation Direct Contact	Excavation Disposal
Name McKinnon City San Francisco State CA NPL N Cost \$40,000 Start Date 11/05/87 Completion Date 12/29/87	Midnight Dump Twenty deteriorated drums suspected of containing hazardous waste were found in an abandoned van.	Volatile Organics Solvents	Air Contamination/Inhalation Direct Contact Fire/Explosion Hazard	Sampling/Analysis Overpacked Drums Disposal AT: Recycling AT: Thermal Destruction

+Note: Previous removal was completed at site. See Introduction for details.

REGION 9

Superfund Emergency Response Actions

Site Information	Incident Category/Description	Primary Contaminants	Threat(s)	Mitigative Action(s)
Name Ryan Paints City Oakland State CA NPL N Cost \$96,124 Start Date 02/05/88 Completion Date 03/14/88	Inactive Waste Management Facility This site was accessible to pedestrians and contained approximately 250 drums of paint wastes, many of them deteriorated.	Volatile Organics Solvents	Air Contamination/Inhalation Direct Contact Fire/Explosion Hazard	Sampling/Analysis Excavation Site Restoration Disposal AT: Recycling AT: Thermal Destruction
Name Waste Disposal Inc. City Los Angeles State CA NPL Y Cost \$18,000 Start Date 03/28/88 Completion Date 04/27/88	Inactive Waste Management Facility The site was once used for industrial disposal and had a waste pond which was then filled in. The property was open to traffic that stirred up contaminated dust.	Unknown	Direct Contact Soil Contamination	Site Security
Name Whittier Propel City Whittier State CA NPL N Cost \$530,957 Start Date 02/22/88 Completion Date 04/06/88	Inactive Production Facility A car fuel additive, "Propel", was stored on site ever since the company closed. The containers were leaking and deteriorating, causing some migration.	Volatile Organics	Direct Contact Fire/Explosion Hazard Groundwater Contamination Soil Contamination Surface Water Contamination	Overpacked Drums Site Restoration AT: Thermal Destruction
Name Aerolite Chrome City Reno State NV NPL N Cost \$290,000 Start Date 03/18/88 Completion Date 04/10/88	Inactive Production Facility The site inventory included 25 open topped vats, 100 55-gallon drums and various containers containing 10,000 gallons and 2,000 pounds of chemicals and wastes.	Cyanide Volatile Organics Metals Acids Bases Solvents	Air Contamination/Inhalation Direct Contact Fire/Explosion Hazard	Site Security Sampling/Analysis Organized Materials Bulked Materials Disposal AT: Recycling
Name Poly-Carb City Wells State NV NPL N Cost \$475,000 Start Date 06/22/87 Completion Date 08/15/88	Inactive Waste Management Facility Between 7,200 and 9,000 gallons of a phenol and cresol solution were spilled, contaminating approximately 1,500 cubic yards of soil. Previous cleanup efforts by the facility had failed.	Solvents	Groundwater Contamination Soil Contamination	Excavation AT: Physical Carbon Adsorption AT: Soil Leaching AT: Thermal Destruction

Note: Previous removal was completed at site. See Introduction for details.

REGION 9

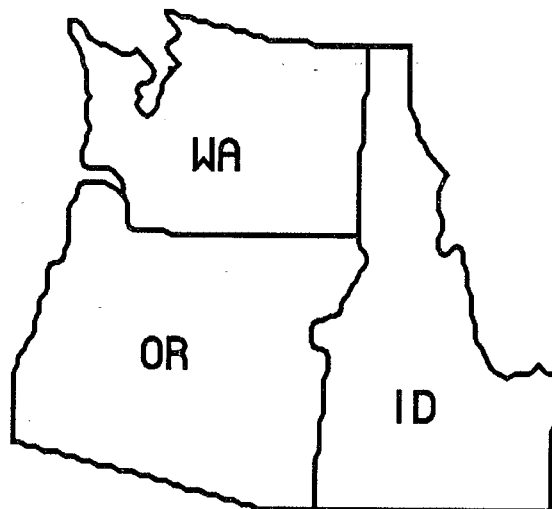
Superfund Emergency Response Actions

Site Information		Incident Category/Description	Primary Contaminants	Threat(s)	Mitigative Action(s)
Name	Silverado Leach Mill	Inactive Production Facility The site included structures that housed incompatible hazardous substances in deteriorating containers. An on-site pond was also contaminated with cyanide solutions.	Cyanide Volatile Organics Acids	Air Contamination/Inhalation Direct Contact Fire/Explosion Hazard Groundwater Contamination Soil Contamination	Sampling/Analysis Neutralize Materials Overpacked Drums Disposal
City	Eureka				
State	NV				
NPL	N				
Cost	\$34,045				
Start Date	02/02/88				
Completion Date	02/08/88				

+Note: Previous removal was completed at site. See Introduction for details.



U. S. EPA REGION 10



For Information Contact:

**Chief, Superfund Response
and Investigations Section,
Hazardous Waste Division
1200 Sixth Avenue
Seattle, WA 98101
(206) 442-1196**



REGION X COMPLETIONS LISTED IN VOLUMES I AND II

ALASKA

Bendle's Road Oiling Co.
Ohlson Mountain PCB Site

IDAHO

Arrcom (Drexler Enterprises)
Bunker Hill Mining and Metallurgy
Comeback Mine
Emmitt PCB
Municipal Landfill
Pacific Hide & Fur Recycling

OREGON

Northwest Dust Control
Union Ave. PCB Site
United Chrome Products Inc.
Willamette River - CG

WASHINGTON

Abandoned Drum
American Surplus
Lake Washington Ship Channel - CG
Little League Pesticide
Marrowstone Island - CG
Northwest Transformer
Olympia Pesticide Fire
PCB Contamination
Spokane Drum Fire
Western Processing Co., Inc.
Williams & Son

Superfund Emergency Response Actions

Site Information		Incident Category/Description	Primary Contaminants	Threat(s)	Mitigative Action(s)
Name	Alaska Huskey Battery	Active Production Facility Years of recycling and battery production resulted in PCB and lead contamination of the soil at this facility.	PCBs Metals	Air Contamination/Inhalation Direct Contact Groundwater Contamination	Site Security Sampling/Analysis Excavation Disposal
City	Anchorage				
State	AK				
NPL	N				
Cost	\$930,000				
Start Date	06/30/88				
Completion Date	09/09/88				
Name	U.S. DOT-Standard Steel	Active Production Facility A 6-acre recycling operation contained an estimated 180 PCB transformers, 500-1000 drums and containers of hazardous waste, and some 20,000 acid/lead batteries.	Dioxin PCBs Asbestos Volatile Organics Metals Solvents	Direct Contact Food Chain Contamination Groundwater Contamination Soil Contamination Surface Water Contamination	Site Security Sampling/Analysis Organize Materials Pumped Contaminants Migration Control Overpacked Drums Containment/Retention Disposal AT: Thermal Destruction AT: Recycling
City	Anchorage				
State	AK				
NPL	Y				
Cost	\$1,636,508				
Start Date	06/02/86				
Completion Date	09/15/88				
Name	Arrcom Corp (Drexler)+	Inactive Production Facility This site is located above the sole-source aquifer for 350,000 people. The site had 27 partially filled storage tanks, many of them leaking.	PCBs Asbestos Waste Oils Solvents	Direct Contact Drinking Water Contamination Groundwater Contamination Soil Contamination	Sampling/Analysis Containment/Retention Organized Materials Disposal
City	Rathdrum				
State	ID				
NPL	Y				
Cost	\$990,000				
Start Date	05/01/87				
Completion Date	03/01/88				
Name	Elk River-Mitchell Site	Midnight Dump An illicit gold ore mercury extraction operation conducted at a residential property resulted in the contamination of a street, storm drain, culvert, ditch, and vegetation for more than five blocks.	Metals	Air Contamination/Inhalation Direct Contact Food Chain Contamination Groundwater Contamination Soil Contamination Surface Water Contamination	Sampling/Analysis Excavation Disposal
City	Elk River				
State	ID				
NPL	N				
Cost	\$118,000				
Start Date	09/19/88				
Completion Date	09/24/88				

+ Note: Previous removal was completed at site. See Information for details.

REGION 10

Superfund Emergency Response Actions

Site Information	Incident Category/Description	Primary Contaminants	Threat(s)	Mitigative Action(s)
Name Greenspeed Pest & Lawn Management City Boise State ID NPL N Cost \$295,000 Start Date 08/05/87 Completion Date 03/18/88	Inactive Production Facility Approximately 50 gallons of pesticides were spilled on a residential lot. Soil was contaminated and pesticide products and containers remained onsite.	Pesticides	Direct Contact Drinking Water Contamination Groundwater Contamination	Site Security Sampling/Analysis Disposal
Name Depoe Bay (CG) City Lincoln City State OR NPL N Cost \$1,788 Start Date 04/25/88 Completion Date 07/01/88	Other A 55-gallon drum washed ashore on the beach.	PCBs Volatile Organics Waste Oils Solvents	Direct Contact	Sampling/Analysis Organized Materials Disposal
Name Lake Washington Drum (CG) City Seattle State WA NPL N Cost \$2,000 Start Date 08/26/87 Completion Date 10/07/87	Other A 55-gallon drum containing trichloroethylene was found in Lake Washington.	Solvents	Direct Contact Ecological Damage Soil Contamination Surface Water Contamination	Sampling/Analysis Disposal
Name Pallister Paint Site City Everett State WA NPL N Cost \$1,653,066 Start Date 08/19/85 Completion Date 02/15/88	Inactive Production Facility This was a site of uncontrolled storage of large quantities of flammable paints, military and industrial chemicals, transformer liquids, and other hazardous chemicals and compounds.	PCBs Asbestos Metals Solvents	Air Contamination/Inhalation Direct Contact Fire/Explosion Hazard Soil Contamination	Site Security Sampling/Analysis Excavation Organized Materials Overpacked Drums Disposal

+ Note: Previous removal was completed at site. See information for details.

<u>SITE</u>	<u>INDEX</u>	<u>REGION</u>
#7 Commercial Street		I
10th Street Frazier Pits		VI
301 Main Street		VI
A - Chemical		V
A&F Materials Reclaiming		V
A.L. Taylor (Valley of the Drums)		IV
Abandoned Drum - CG		IV
Abandoned Drum - CG		IX
Abandoned Drum - CG		I
Abandoned Drum - CG		V
Abandoned Drum		II
Abandoned Drum Site		IV
Abandoned Drum		V
Abandoned Drum		X
Abandoned Drum/Hillsborough - CG		IV
Abandoned Drum/Marathon - CG		IV
Abandoned Drums - Ecorse		V
Abandoned Drums - Erie Canal - CG		II
Abco Metal Finishing		IX
ABM Eddystone		III
Acrylonitril Spill		VI
Aero Quality Plating Co.		IX
Aerolite Chrome		IX
Aeroquip/Republic Hose		V
Aggie Chemical		VI

SITEREGION

Ahoskie Midnight Dump

IV

Aidex Corp.

VII

Alandale Dr. Chemical Site

IV

Alaska Huskey Battery

X

Alburn Incinerator

V

Allen Transformer

VI

Ambler Asbestos Piles

III

American Creosote

VI

American Creosote Works (MS)

IV

American Creosote/Jackson Plant

IV

American Creosote/Pensacola

IV

American Insulator Co.

III

American Steel Drum

V

American Street Tannery

III

American Surplus

X

American Thermostat

II

American Thio - Chem

VI

Amoco Dock 31- CG

VI

Anaconda Road Site

V

Androscoggin Rivers

I

Angeles National Forest

IX

Apache Waste Oil

III

Argent Corporation

VI

Arlington Blending

IV

Army Creek Landfill

III

Arnold Weed Control Site

IX

SITEREGION

Arrcom (Drexler Enterprises)
Arsenic Mines
Arsenic Trioxide
Asbestos Bags
Asbestos Dumping
Asbestos/Torrey Place
Ashland Chemical
ASPA Power Plant
Atlantic Avenue
Atlantic Resources
Atwell Mountain Drum Site
Auburn Church Road Drums
Auburn Road
Autocrat Corp.
B & B Salvage
Babb Drums
Baird & McGuire
Baldwin Park
Baltimore Iron & Metals - CG
Bank County Drum
Barge Star 7 - CG
Barker Chemical
Barnes Mill Drum Site
Barnes Property
Barrow County Drum Site
Batesville Landfill Fire

X
II
VIII
V
II
II
III
IX
III
II
III
IV
I
V
VII
IV
I
VII
III
IV
VI
VI
IV
IV
IV
VI

SITEREGION

Bayshore	II
Beach Containers - CG	IV
Beach Contamination	II
Beached Drum - CG	IV
Beal Street Drum	I
Beauty Rose Chemical	VII
Belvidere Municipal Landfill	V
Bendle's Road Oiling Co.	X
Bennett Stone Quarry	V
Bensalem Drum	III
Bent Creek/James River	III
Benton Furniture Co.	IV
Bergeron Marine	IV
Berks Sand Pit - Van Ellswyck	III
Berlin & Farro	V
Bern Metals	II
Bemcolor Inc. - CG	II
Berrien Products	IV
Bestplate Inc.	VI
Better Brite III / Chippewa	V
Better Brite-Chrome	V
BFG Electroplating	III
Biedler Road	III
Big John's Salvage - Hoult Road	III
Big John's Salvage	III
Big Spring Ranch	IX

SITEREGION

Bio-Ecology Systems, Inc.

VI

Bittle Well Contamination

III

Bliss/Frontenac

VII

Bloomfield Avenue

IX

Blooming Grove

II

Bloomington Capacitor Site

V

Blue Cyanide Chips

V

Blue Poly Drum - CG

II

Blue River Flood

VII

Blue Spruce International

II

Bostic Drum

IV

Bourdeaudhui

I

Bow Chemical

V

Bowling Green Toxics

IV

Boyertown Scrap Metal

III

Brady Metals

II

Breakneck Road

I

Bridgeport Rental & Oil Services

II

Broadway Salvage Oil #1

VII

Brodhead Creek

III

Brown's Battery Breaking

III

Brown's Field Site

IX

Bruin Lagoon

III

Buckhorn Pesticide Fire

IV

Buckhorn Rd. Drum Site

IV

Buffalo Fire

VIII

SITEREGION

Buford Highway	IV
Builders Hardware Finishing	IX
Bunker Hill Mining & Metallurgy	X
Buried Drum Removal	III
Burkett Cylinder	IV
Burns Hill Road	I
Burnt Fly Bog	II
Bursey Asbestos	I
Bush Brothers Plating	IV
Butler Tunnel	III
Byron/Johnson Salvage Yard	V
Byron Barrel & Drum	II
C & R Battery Co. Inc.	III
C&F Chemical	II
C-Way	V
C.D. Buff	IV
C.E. Brubaker	III
Caldwell County	IV
California Bionuclear	IX
California Creative Dynamics	IX
California Gulch-Maestes Well	VIII
California MD Drum	III
Callahan Drum	V
Camax Site	VIII
Camp Run Drum	III
Camplain Road	II

<u>SITE</u>	<u>REGION</u>
Camuy River Dump Site	II
Cannelton Industries	V
Cannon Engineering Corp. (CEC)	I
Cannon Engineering Corporation	I
Canton Plating & Bumper Works	IV
Cantu Well	V
Cape Cod Canal - CG	I
Cape Fear Wood Preserving	IV
Cape Hatteras National Seashore - CG	IV
Capitol Assay Labs	III
Captain Jack Mill	VIII
Cargo Ship Explosion	VI
Carolawn, Inc.	IV
Carolina Production	IV
Carolina Transformer	IV
Carter Industrial	V
Cascade Road	IV
Cashel Property	VIII
Castle Hill - CG	I
Catoosa County Labpack	IV
Caustic Chemical	IV
Caustic Midnight Dump	III
Cayadutta Creek	II
Cecil County Dump	III
Central Waste Landfill	V
Charles George Reclamation Landfill	I

<u>SITE</u>	<u>REGION</u>
Chatham Beach - CG	I
Chem Pac	V
Chem Sciences	V
Chem-Dyne	V
Chemco	V
Chemical Control	II
Chemical Drum - CG	V
Chemical Drums - Padre Island - CG	VI
Chemical Insecticide Corp.	II
Chemical Leaman Tank Lines	II
Chemical Metals Industries	III
Chemical Minerals Reclamation	V
Chemtronics, Inc.	IV
Chenault Rectifiers	IV
Cherokee Trucking	IX
Chesapeake Bay - CG	III
Chesapeake PCB Site	III
Chesterfield Tank	VII
Chicago Drum	V
Church of God Property	IV
Cimarron Mining Site	VI
City Industries Inc.	IV
Clark Property	III
Clayton Ballfield Pesticide	IV
Cleve Reber	VI
Cleveland Co. Drum	IV

SITEREGION

Clothier Disposal	II
Coal Branch Hollow	IV
Cobb County Drum	IV
Coleman-Evans Wood Pres. Co.	IV
Colter Street	II
Columbia Park Drum	III
Comeback Mine	X
Commercial Oil	V
Community Christian Church	VII
Compass Industries (Avery Dr.)	VI
Connecticut River Drum Site	I
Cooks Landfill	I
Coons Run	III
Cooper River - CG	II
Copperopolis Site	IX
Cornell - Dublier Electronics	IV
Cottage Street	I
Cowart Vacation Bible School	IV
Creosote Tanks Release (Talleyrand)	IV
Crooked River Drums	VII
Crystal Chemical Co.	VI
Crystal City Airport	VI
Crystal Cove Beach - CG	IX
Cummings Landfill	III
Curtis Animal Products	VII
Cyanide Incident	V

SITEREGION

Cyanide Spill	IX
Cyanide Treatment	I
Dade County Drum	IV
Danville Plating	V
Davenport Creosote Spill	IV
Davis Farm	IV
Davis Liquid Waste	I
Dead Creek	V
Dean Street (Norwood PCBs)	I
Dearborn Drums	VII
Del Norte Pesticide Storage	IX
Dela-Tek	IX
Delancy Trailer	II
Delaware Bay Drum - CG	III
Delaware River - CG	II
Delaware River II - CG	III
Delaware Sand & Gravel Landfill	III
Delmar Street Drums	VII
Dempsey Residence	VI
Denver Radium - B&C Metals	VIII
Depoe Bay - CG	X
Dickerson Post Treating	IV
Dickhoener PCB Site	VII
Distler Brickyard	IV
Distler Farm	IV
Dixco Chemical Sales	IX

SITEREGION

Dockery Property
Donaldson Roadside Spill
Donegal Twp Midnight Drum
Dorado Drum Site
Dorney Road Landfill
DOT Maintenance Yard
Dover Air Force Base
Dowden Landfill
Dracup Warehouse
Drainage Ditch
Drake Chemical
Dreyfus Street
Drums on Beach - CG
Duane Marine
Duell and Gardner Landfill
Duncan Transformer Site
Duncansville Tanker
Dunning Mountain Drum Fire
Durham Twp. Sovent Spill
E.C. Kramer
Eager Beaver Lumber Co.
Eagle Mine
Earl Allen Chemical Sites
East Bay Site
East Cumberland Street
East Hanover Site

IV
IV
III
II
III
IV
III
V
III
III
IV
V
II
V
VI
III
III
III
IX
III
VIII
IV
V
III
II

<u>SITE</u>	<u>REGION</u>
Eastern Chemical Co.	IV
Echo Bay Station	IX
Economy Products	VII
Edmond's Salvage Yard	IV
Edwards Road Site	III
Eginore Fertilizer	VII
El Monte Site	IX
Elizabeth City Drum	IV
Elk River - Mitchell Site	X
Elkhart Site	V
Ellerby Refining Site	VIII
Ellis Road	IV
Ellisville Site (Callahan)	VII
Emmitt PCB	X
Englewood DDT	VIII
Envirochem Corp.	V
Environmental Services, Inc.	VII
Erwin Farm	VII
Evans Trail	III
Everhart Lumber Site	IV
Eweing Road Drum Site	III
F/V Victoria II Keehi Lagoon	IX
Fairview Road	I
Farmers Reservoir and Irrigation	VIII
Fennel Road	III
Floating Drum - CG	IX

SITEREGION

Flood Damage	VII
Floyd Hutter	V
FMHA - USDA / Roy	IV
Forbush Metal Fabricators	IV
Fort & Scotten Streets	V
Fort Anne	II
Fort Drum	II
Fort Totten - CG	II
Franklin/Gimblin St.	VII
Frejonley	VIII
French, Ltd.	VI
Fried Industries	II
Front Street Tanker	III
Ft. Oglethorpe Drum	IV
Fulton Terminals	II
Furnace Road Drum Site	IV
Gail Foster Property	IV
Gallaway Pits	IV
Garage Fire	III
Garden Valley Site	IX
Garfield Street Drum	III
Garner Road Drum	IV
Garvey Avenue Site	IX
Gary Dog Pound	V
Gaston Co. Drum	IV
Gazzola Drive	II

<u>SITE</u>	<u>REGION</u>
Gebhart Fertilizer	V
Geiger (C & M Oil)	IV
Gems Landfill	II
Gene Murren	VIII
General Disposal	IX
General Laminates	IV
Geneva Ind/Furhmann Energy Corp.	IV
George O'Bryan Site	IV
Georgia Highway 138	IV
Gibson Midnight Drum	IV
Gila River Indian Reservation	IX
Gila River Site #2	IX
Gillcrest Road	IV
Gonic Sites	I
Gooken Farms Drum	IV
Goose Farm	II
GP&K, Inc.	V
Gradyville Midnight Dump	III
Graff Drums	VIII
Grand Forks Drum Site	VII
Great Diamond Island	I
Green River Cyanide	VIII
Greenbriar River Flood	III
Greens PCB Drums	VI
Greenspeed Pest & Lawn Management	X
Greenup Tire Fire	IV

SITEREGION

Greenwood Chemical	III
Greiners Lagoon	V
Gulf Battery Exchange	IV
Hadaway Road	IV
Haddock Airport	VI
Hall Street	I
Hamill - Hooker Road #3	IV
Hampton Cylinders Site	III
Harris Property	III
Harrison Co. PCB Spill	III
Harrison	IV
Harvey & Knott Drum Site	III
Hauulu Beach Park - CG	IX
Hayes Park Pool	II
Head PCB Spill	IV
Heldt Chemical (SD Services)	VIII
Helton Property Site	IV
Heritage / Laurel	VI
Herold Site (Black Hawk)	VIII
High Quality Circuits	VIII
High Quality Plating	III
High Sachem Site	I
High View Terrace	II
Highlands Acid Pit	VI
Hillsborough - Route 206	II
Hipps Road Landfill	IV

SITEREGION

Hixon Plating

V

Hoffman Drums

VII

Holder Corporation

III

Holley Residence

VI

Hollingsworth Pesticide Site

IV

Hollingsworth Solderless

IV

Holly Street Drum Site

VII

Hollywood Cemetery Site

IV

Horry Co. Fireworks

IV

Horseshoe Road Dump

II

Hougels Neck - CG

I

Housatonic River Drums

I

Houston Ship Channel

VI

Howard Rodger's Drum

III

Hudson River - CG

II

Humpback Mtn. Rd. Drums

IV

Hutchinson Mine Site

III

Hyde Park Drum Site

II

Hytech Chrome

V

I-69

V

Independent Nail

IV

Indiana Refinery

V

Industri-Plex

I

Industrial Avenue (Lowell)

I

Industrial Latex

II

Industrial Plastics

IV

SITEREGION

Industrial Waste Processing	IX
Ingram Property	IV
Inman Warehouse	IV
International Disc Corp.	V
International Metallurgical Service	II
Interstate 70 Acid Spill	III
Interstate Transformer	III
Iron Hill Road Drum	III
Iron Horse Park	I
Isanti Solvent Sites	V
Ivy Road (Bessie Runner)	IV
J & J Plastics	VI
J & L Drum Site	IV
J. V. Peters	V
J. C. Haynes	V
Jack Dennis Pesticide Burnsite	VI
Jackson St. Drums	VII
Jacques Miller Site (Kirby)	IV
Jagger Lane	II
Jefferson Road Drum	VI
Jimmy's Truck Stop	IV
JMC Plating Co.	IV
John's Refinery	VII
Johns Manville Asbestos Site	I
Johnson Bronze	III
Johnson Property Site	IV

SITEREGION

K & S Circuits

V

Kabletown Road

III

Kane & Lombard Street Drums

III

Kapiros Site

I

Kearney Drum Dump #1 and #5

II

Kearney Drum Dump #2

II

Keefe Environmental Services

II

Keith Farm Pond

IV

Kennebec (Flood)

I

Kentucky Avenue Well Field

II

Kenyon Street Drum Site

IV

Kershaw Co. Landfill

IV

Keswick Road - CG

I

Kevak Property

III

Keyser Ave. Borehole

III

Keystone Drive Pesticide Dump

III

Kin-Buc Landfill

II

Knapp Creek

III

Krum Trash

III

L. Fricker Co.

IX

Lackawanna Refuse

III

Lacy Manor Drive

VII

Laguna Beach II - CG

IX

Lake Kathy Road Spill

IV

Lake Sandy Jo (M&M Landfill)

V

Lake Sunapee

I

SITEREGION

Lake Washington Drum - CG

X

Lake Washington Ship Channel - CG

X

Lake Worth Inlet - CG

IV

Lakewood

V

Lakin State Farm

III

Lancaster Battery

III

Lando Drums Site

IV

Landsdowne Radiation Site

III

Landsdowne Site #2

III

LaSalle Electric Utilities

V

Laskin/Poplar Oil Co.

V

Laurel Springs PCB Site

IV

Lee's Lane Landfill

IV

Leetown Pesticide

III

Lehillier/Mankato Site

V

Lemon Lane Landfill

V

Lenoir Refining

IV

Lincoln Avenue

II

Lincoln Avenue / P.J.

II

Linecrest Way

IV

Linemaster Switch Corp.

I

Lipari Landfill

II

Liquid Disposal, Inc.

V

Liquid Dynamics

V

Liquid Waste Management

V

Little League Pesticide

X

<u>SITE</u>	<u>REGION</u>
Lockwood St.	II
Locomotive Junkyard - CG	III
Long Beach Drum - CG	IX
Long Island Beach - CG	II
Lorentz Barrel & Drum	IX
Love Canal (Black Creek)	II
Love Residence	VI
Lowell Road	I
Lowney Way	I
Lubricants, Inc.	V
Lummis Island - CG	IV
Lusher St. Groundwater	V
Lynnhaven Bay - CG	III
Macon Property	IV
Madison Wire Co.	II
Main Street Well	V
Malitovsky Drum Co.	III
Malleable Range Co.	V
Manilla Creek	III
Marcy Street	VII
Marietta Mercury Spill	IV
Marietta Road	IV
Marrowstone Island - CG	X
Marzone Chemical Co.	IV
Matagorda Island - CG	VI
Matarazzo	I

<u>SITE</u>	<u>REGION</u>
Mathews Electric Plating	III
Mathis Brothers Chickamauga	IV
Mattiace Petrochemicals Company	II
McAllister Drum Site	IV
McColl	IX
McDonald Farm Site	IV
McKinnon	IX
Medley Farm Drum Dump	IV
Mek Spill	II
Mercer County Drum Dump	III
Metcoa Radiation Site	III
Mexico Feed & Seed	VII
Meyers Dump	V
Michael Battery	VII
Michigan City Drums	V
Midco I	V
Middeltown Road Dump	III
Midnight Dump - CG	VI
Midnight Dump	IV
Midnight Dump	I
Midnight Dumping (KY)	IV
Midnight Dumping - Detroit	I
Midnight Dumping/Guilford	IV
Midwest Plating - Kokomo	V
Midwest Plating	V
Mill Creek Dump	III

<u>SITE</u>	<u>REGION</u>
Mill Creek Site (Anaconda)	VIII
Miller Avenue	II
Miller Site	IV
Millpoint (Spring Lake)	V
Minker / Stout / Romaine Creek	VII
Minor Spill / Youngstown - CG	II
Minsei	II
Monon Waterworks	V
Montgomery Ward Store	VIII
Moreland Site	II
Motco, Inc.	VI
Motherlode Facility	VIII
Mottolo Pig Fram	I
Mountain Pine Pressure Treating	VI
Mowbray Engineering Co.	IV
Mt. Elliot Drum	V
Mt. Pocono	III
Mule Creek Drums	VIII
Municipal Landfill	X
Murdock Groundwater	VII
Myers Property	II
N. Lindenhurst	II
N. Tulip St. - Escondido	IX
Nanpasket Beach - CG	I
Nantasket Beach	I
Naomi Drum Site	IV

SITEREGION

Nascolite Corp.	II
Nashville Pesticide Site	IV
Natchez Drug Site	IV
National Galvanizing	IV
National Vulcanized Fiber	III
Near Wills Point	VI
Neosho Wastewater Treatment School	VII
Nesbit Scale House	IV
New Bedford Site - CG	I
New Castle Containers	III
Newfound Road	IV
Newnan Landfill	IV
Newport Dump	IV
Newsome Brothers/Old Reichold	IV
Niagara Chemical	VI
Nichols Air Strip	IV
Nichro Plating Co.	IV
Nickel Plate Road	III
Nickel Solution Recycling	IX
Niles Township	V
Ninth Avenue Dump	V
Niquette Dr. Asbestos Area 1	I
Niquette Dr. Asbestos Area 2	I
Nodaway Drums	VII
North 'U' Drive PCBs	VII
North Bloomfield	II

<u>SITE</u>	<u>REGION</u>
North-U Drive Well Contamination	VII
Northernair Plating	V
Northwest Dust Control	X
Northwest Transformer	X
Norwalk Drum Site	IX
Nyanza Chemical	I
O'Con Engineering	IV
O'Sullivan's Island Drum	I
Oak Creek	V
Oakland Junk Yard	III
Oconomowoc Electroplating Inc.	V
Odessa Manufacturing Co.	VII
Ohlson Mountain PCB Site	X
Old American Glycerine-Lewis Run	III
Old Garage	III
Old Henley	VI
Old Inger Oil Refinery	VI
Old Laramore Ltd.	IV
Old Mill	V
Old Springfill Landfill Site	I
Olean Well Field	II
Olympia Pesticide Fire	X
One-Hour Koretizing	IV
Operating Industries	IX
Ordinance Research Institute	IV
Ou/Story/Cordova	V

SITEREGION

Ottati & Goss/Kingston Steel Drum	I
Pacific Hide & Fur Recycling	X
Padre & Mustang 86 - CG	VI
Padre & Mustang Island IV (Laguna Madre) - CG	VI
Padre & Mustang Islands - CG	VI
Padre & Mustang Islands II - CG	VI
Padre & Mustang Islands III - CG	VI
Pagan Road	III
Pallister Paint Site	X
Palmetto Wood Preserving	IV
Panther Creek - CG	VI
Paoli Rail Yard	III
Paper Steel & Alloys Inc.	IV
Parkside Drive	IX
Parthey Lane	II
Patrick Diehl	III
Payco Pallet & Drum	IV
PBM Enterprises	V
PCB Contaminated Wells	IV
PCB Contamination	X
PCB Midnight Dump	IV
PCB Transformers - CG	IX
PCB Wastes (1-University of Guam)	IX
PCB Wastes (2-University of Guam)	IX
PCB Wastes (3-Guam Memorial Hospital)	IX
PCB Wastes (4-Guam Public Hospital)	IX

SITEREGION

PCB Wastes (5-Guam Department of Agriculture)

IX

PCB Wastes (7-Guam Department of Economics)

IX

PCB Wastes (8-Guam Phys.)

IX

PCB Wastes (9-Guam PHL)

IX

PCB Wastes (11-Harmon)

IX

PCB Wastes (13-GPA/Naval Station)

IX

PCB Wastes (14-CNMI PCB)

IX

PCB Wastes (15-Saipan)

IX

PCB Wastes (16-Palau)

IX

PCB Wastes (17-Marshall Island)

IX

PCB Wastes (18-Guam Department of Public Health)

IX

PCB Wastes (19-Marshall Island)

IX

PCB Wastes (20-Marshall Island)

IX

PCB Wastes (21-Ebeye Pub)

IX

PCB Wastes (25-Ponape Elect)

IX

PCB Wastes (26-Ponape)

IX

PCB Wastes (27-Ponape DPFOR)

IX

PCB Wastes (28-Ponape)

IX

PCB Wastes (29-Kosrae)

IX

PCB Wastes (30-Truk)

IX

PCB Wastes (32-Yap)

IX

PCB Wastes (33-Yap)

IX

PCB Wastes (A-Guam Department of Education)

IX

PCB Wastes (B-Dela Cruz)

IX

PCB Wastes (C-Majuro Hospital)

IX

PCB Wastes (D-Medical Clinic)

IX

<u>SITE</u>	<u>REGION</u>
PCB Wastes (F-Prot Yap)	IX
PCB Wastes (G-USCG Loran)	IX
PDC Spas	VIII
Peachtree Mercury Spill	IV
Peerless Plating	V
Pembroke Pines	IV
Pepper Steel & Alloys, Inc.	IV
Perona Tire Fire	II
Persons Property PCB Drums	IV
Pesses Chemical	VI
Petersburg Flood	III
Petro-Chemical	IV
Petro-Chemical Systems	VI
Petroleum Power & Maintenance	V
Petroleum Products (Pembroke Road)	IV
Picillo Farm	I
Pier 35 - CG	IX
Pine Street Canal	I
Pinette's Salvage Yard	I
Piney Creek Drum	III
Pioneer Sand Co.	IV
Pirates Beach - CG	VI
Plastifax, Inc.	IV
Plating Equipment Used	V
Plymouth Wood Treatment	IV
Poer Farm	V

<u>SITE</u>	<u>REGION</u>
Pointer Asbestos	I
Pollution Abatement Services (PAS)	II
Poly-Carb	IX
Pomona Oaks Residential Wells	II
Portage Drums	V
Potters Pits	IV
Pottstown Abandoned Trailer	III
Precious Metals Inc.	III
Primo Shield	II
Printed Circuits, Inc.	III
Pronto Services	VI
Puerto Rico Organic Inc.	II
Pulverizing Plant Drum Site	IV
Pulverizing Services	II
Purity Oil Sales, Inc.	IX
Quail Run Mobile Manor	VII
Quanta Resources	II
Queens Property	IV
R.J. Trucking	V
Randall Residence	VIII
Raser Tannery	V
Rasmussen's Dump	V
Ray York Body Shop	III
Reimer Drum	IV
Reliable Plating Co.	V
Reliance Refining Co.	VIII

<u>SITE</u>	<u>REGION</u>
Renora, Inc.	II
Reuping Leather Co.	V
Revere Chemical Co.	III
Revere Copper & Brass	V
Rhinehart Tire Fire Dump	III
Richardson Property	II
Richmond St. Drum	VIII
Ridge Ave. Asbestos	I
Ridgeview PCB Site	III
Rigel Street Site	IX
Riverside Cemetery Drums	VIII
Roanoke River Drums	III
Robert Street Drums	VII
Rock Bridge Park	IV
Rock Road Drum Spill	IV
Rockwood School District	VII
Rocky Mountain Custom Chrome	VIII
Rodgers Laboratories	V
Roe Lane Tank	VII
ROIC - Sun Valley	IX
Rolfite Canal Street	I
Rome Coal Tar	IV
Roosevelt Highway Spill	IV
Rose Chemical	VII
Rose Township Dump	V
Rotunda Drive	III

<u>SITE</u>	<u>REGION</u>
Route 13 Drum Site	III
Route 211 Pesticide Site	IV
Route 563 Drum Site	III
Rowes Corner Drum Dump	IV
Rumple Junkyard	V
Rusha Farm	VII
Russell Avenue Asbestos Area	I
Ryan Paints	IX
Rye Street Pesticide	I
S. Bank Asbestos	I
S. Electroforming	IV
S. Valley PCB Tank Site	VI
S.E.R. Plating	V
Saco Tannery Pits	I
Sacramento River - CG	IX
Sag Harbor	II
Saginaw Painting Co.	V
Salem Acres	I
Salvage Oil of America	IV
Salvo Property	IV
Sammis Avenue - Deer Park	II
Samoset Avenue Chemical Spill	I
Sampson County Dumpster	IV
Sand Key - CG	IV
Sand, Gravel & Stone	III
Sandonelle PCB	III

SITEREGION

Sanford Plating Company	IV
Sasser Electric Co. Drum	III
Satala Power Plant I	X
Satellite/Ammet Incendiary	III
Savage Municipal Water Supply	I
Schmalz Dump	V
Scotts Creek Battery	IV
Sealand, Ltd.	III
Seaway Warehouse	V
Security Boulevard	III
Selkirk - Benham St.	V
Semco PCB Site	III
Senuta Residence	VI
Seymour Recycling Corp.	V
Shady Lane Asbestos	I
Shaffer Equipment Co.	III
Shelton Wells	V
Ship Channel - CG	VI
Shirley #2	II
Signo Delta Warehouse	II
Signo Trading / Mount Vernon	II
Signo Trading	II
Signo/Coty	II
Signo/Kenston	II
Sikes Disposal Pits	VI
Silresim Chemical Corp.	I

SITEREGION

Silver Bow Creek / Walkerville	VIII
Silverado Leach Mill	IX
Simpson Road Drum	IV
Skiljan/Dial	V
Skylark (Yates Residence)	VI
Smith's Farm	IV
Snapper Lane - CG	IV
Solid State Circuits	VII
Solly Avenue Midnight Dump	III
Sonford Products	IV
Sorrento Site	V
South Acres	VI
South Adams County Water District	VIII
South Bay Asbestos Area	IX
South Half Moon Bay - CG	IX
South of Waco	VI
South Riverdale Drive	IV
South Valley / Whitfield	VI
Southern Lumber Co.	IV
Southern Maryland Wood Treating	III
Spectro Chemical Co.	V
Spokane Drum Fire	X
Springer Septic Services - CG	III
SSCD Schoolyard Site	III
St. John River - CG	IV
St. Louis River - CG	V

SITEREGION

Stamina Mills, Inc.	I
Standard Chemical Co.	IX
Stanford Site #1	IX
Stanford Site #2	IX
Starbrick	III
Steel Container	V
Stevenson Road Drum	V
Stewart Drum	V
Stewco, Inc.	VI
Stoneman Property	III
Store Safe Explosives	VII
Stringfellow Acid Pits	IX
Styrene Spill - CG	VI
Sullins Residence	VII
Summit Equipment & Supplies	V
Summit National	V
Sunset Golf Course	III
Swainsboro Print Works	IV
Sweetwater Creek Drums	IV
Swissvale Auto	III
Sycamore Street	V
Sylvester	I
T.P. Long	V
Tafuna Power Plant	IX
Talley Farm	VII
Taputimu Farm	IX

SITEREGION

Tar Creek (Ottawa County)

VI

Taylor Borough Dump

III

Taylorsport Sand & Gravel

IV

Tecate Site

IX

Texarkana Woodpreserving

VI

The Chrome Shop

IX

Tholozan Street Site

VII

Thorn Run Spill

II

Tidewater TNT

III

Tindall Property Transformer

IV

Tinicum Marsh

III

Tinkham Garage

I

Tower Chemical Co.

IV

Town of Kent

II

Town of Pompey

II

Trans Tech / Adamstown

III

Tri-City Oil Conservationist, Inc.

IV

Tri-State Engineering

III

Triangle Chemical Co.

VI

Trowbridge Estates Mercury

III

Truck Accident

VIII

Try Chem Corp.

V

Tuba City Acid Tank

IX

Turco Coatings

III

Turkey Creek Barrel Dump

IV

Tybouts Corner Landfill

III

SITEREGION

Tyler Street Drums

V

Tysons Dump

III

U.S. 70 Dump Site

IV

U.S. Customs Pesticide

IV

U.S. DOT - Standard Steel

X

Union Ave. - PCB Site

X

Union Chemical Co.

I

Union Co. Drum

IV

Union Plating

III

Union Scrap Iron and Metal Co.

V

United Chrome Products Inc.

X

United Rigging & Hauling

II

United Scrap Lead Co.

V

Unknown Chemical Discharge - CG

IV

Unknown Chemical Drums - CG

IX

Upper Glade Drum

III

Upshur County 4-H Tarpit

III

US Highway 1 Truck Site

IV

US Scrap

V

Vaagen-Dahle Farm

VIII

Valley Garden Drive

VII

Valleywood Subdivision

V

Verona Well Field

V

Villa Rich - High Point Rd.

IV

Vulcanized Rubber & Plastics

III

W. 58th Street Drum Site

V

<u>SITE</u>	<u>REGION</u>
W.J. Oil Co.	VI
Wach's Landfill	III
Wade (ABM)	III
Wade Park Chemicals	V
Wading River	II
Waldick Aerospace Devices	II
Walkerton Tire Fire	III
Wallkill Well	II
Walter Taylor	III
Wasatch Chemical Co. (Lot 6)	VIII
Washoe Drum	IX
Waste Disposal Inc.	IX
Wausau Groundwater Contamination	V
Weaver Drums	VII
Wedzeb Enterprises Inc.	V
Western Carolina Smelting	IV
Western Processing Co., Inc.	X
Western Sand & Gravel	I
Western States Refining	IX
Westinghouse Elevator Co.	III
Westline Site	III
Westville Oil (Cam - Or)	V
Wheatland Drum	VI
Wheeling Acid Spill	III
Wheeling Hill	III
Whitchouse Oil Pits	IV

SITEREGION

Whitemarsh Twp. Drum	III
Whitley County	IV
Whittier Propel	IX
Wide Beach Development	II
Williamette River - CG	X
Williams & Son	X
Williams Pesticide Site	IV
Windus Drive	II
Winkler Road	VI
Woodbury Chemical Co.	VIII
Woodward Mill Road	IV
Woodward Property Drums	IV
Woody's Tire Fire	IV
Worthington Spring Site	IV
Yellow Water Road Drum	IV
Yokum Chlordane Contamination	III
York Oil Company	II
Yucaipa Drug Lab	IX
Zenith Chemical	IV

