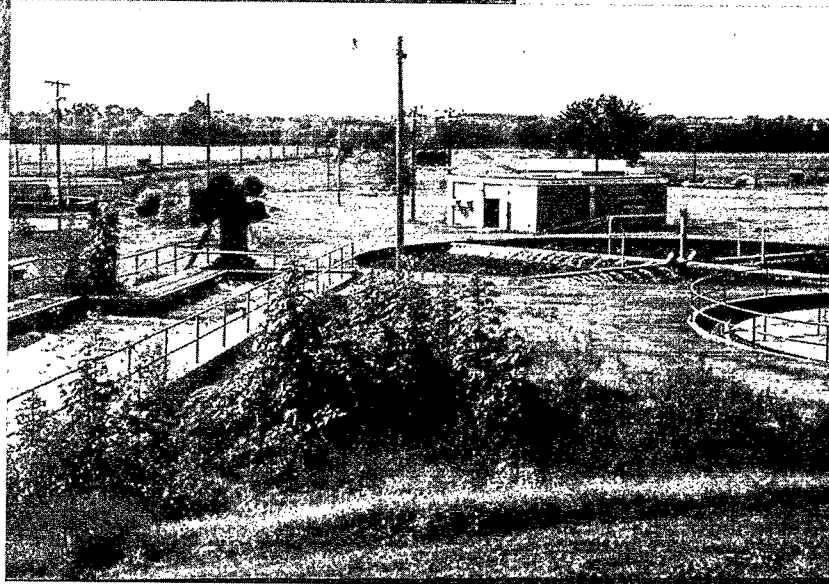




# Wastewater Treatment Programs Serving Small Communities



A surprising number of households in small communities lack adequate wastewater treatment—placing the health of our waters and our citizens at risk. How can your community receive help in addressing these concerns?

# EPA-Funded Wastewater Programs for Small Communities

Wastewater carries toxins, nutrients, and disease-causing organisms. If not properly treated, wastewater can impact the health of our citizens, our groundwater, and our surface waters. Small communities - communities with fewer than 10,000 people - need to spend \$13.8 billion for wastewater treatment to comply with the Clean Water Act. This brochure highlights EPA-funded programs that provide financial assistance, technical assistance, and training to small communities for the construction and operation of wastewater treatment facilities.

## Alaskan Native Villages Sanitation Grant Program

Residents of many Native Villages lack adequate sanitation systems. This program provides grants to Alaskan Native Villages for drinking water and wastewater facility construction, training, and technical assistance in facility operation.

## Clean Water Tribal Grant Program

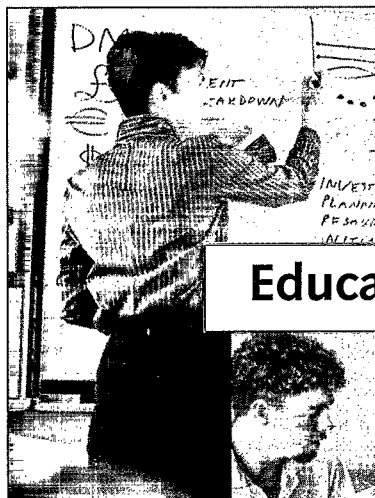
Tribal lands cover 13 percent of the nation's watersheds. This program provides grants to Indian tribes, Alaskan Native Villages, and tribes on former reservations in Oklahoma for planning, design, and construction of wastewater facilities.

## Colonias Program

The southwestern United States contains more than 1,200 colonias — Hispanic communities along the U.S.-Mexico border. This program offers grants for the planning, design, and construction of wastewater and drinking water facilities in these communities.

## National Environmental Training Center for Small Communities (NETCSC)

The Center develops and delivers training courses on wastewater, drinking water, and solid waste to environmental trainers and state and local officials. Services feature a toll-free technical assistance hotline, a website, computer databases, newsletters, and other outreach activities.

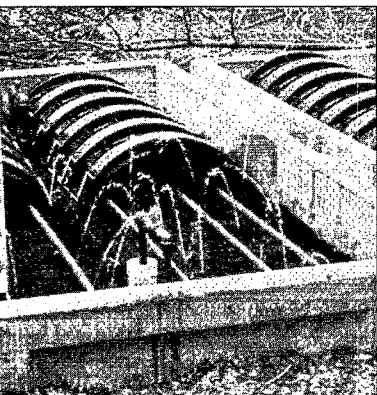


## Education/Training





## Technical Assistance



## Financial Assistance



### National On-Site Demonstration Project (NODP)

For many small communities, the use of onsite wastewater management systems is a cost-effective alternative to centralized wastewater treatment. By providing grants and assistance, this program helps communities plan, design, construct, monitor, and manage alternative onsite systems.

### National Small Flows Clearinghouse (NSFC)

The Clearinghouse collects and distributes information about small wastewater treatment solutions. Services include a toll-free technical assistance hotline, an internet-based discussion group, computer databases, newsletters, and other publications.

### Operator On-Site Technical Assistance Program-104(g)

This program addresses compliance assistance, maintenance, and performance improvement matters by providing no-cost, over-the-shoulder, operations and maintenance, financial, and technical assistance to small municipal wastewater treatment plant operators.

### Rural Community Assistance Program (RCAP)

This network of nonprofit organizations provides community-specific information and technical assistance at no cost. The assistance improves rural communities' ability to plan, design, operate, and maintain wastewater systems.

### Small Communities Outreach and Education Network (SCORE)

SCORE information and outreach helps small communities build self-sufficient wastewater facilities and operate them so they meet clean water standards.

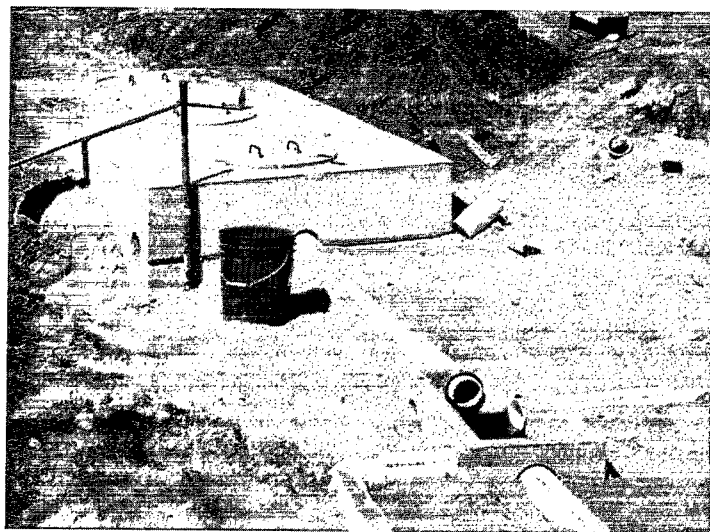
**Contact information: 202-260-5856**

**[www.epa.gov/owm/smallc.htm](http://www.epa.gov/owm/smallc.htm)**

**Toll-free hotlines on back ➡**

## Small Community Wastewater Facts

- More than 70 percent of the nation's housing units that have inadequate plumbing are found in small communities.
- Nearly 1 million housing units in small communities use outhouses or privies for sewage disposal.
- More than 19 million housing units in small communities use septic tanks or cesspools as the primary source of treatment.
- Many small community wastewater problems can be addressed with the assistance of EPA's Small Community Programs and partner organizations.



*Homeowner septic tank installation*

## Contact Information/Hotlines for Wastewater Treatment

### EPA Managed Programs

U.S. Environmental Protection Agency  
Office of Wastewater Management  
Municipal Assistance Branch (4204)  
1200 Pennsylvania Avenue, NW  
Washington, D.C. 20460  
202-260-5856  
[www.epa.gov/owm/smallc.htm](http://www.epa.gov/owm/smallc.htm)

- Alaskan Native Villages Sanitation Grant Program  
[www.epa.gov/owm/indian/alaskan.htm](http://www.epa.gov/owm/indian/alaskan.htm)
- Clean Water Tribal Grant Program  
[www.epa.gov/owm/indian/cwisa.htm](http://www.epa.gov/owm/indian/cwisa.htm)
- Colonias Program  
[www.epa.gov/owm/mexican.htm](http://www.epa.gov/owm/mexican.htm)
- Operator On-Site Technical Assistance Training Program - 104(g)  
[www.epa.gov/owm/tomm.htm](http://www.epa.gov/owm/tomm.htm)
- Small Communities Outreach and Education Network (SCORE)  
[www.epa.gov/owm/scmore.htm](http://www.epa.gov/owm/scmore.htm)

### Organizations Receiving EPA Funding

West Virginia University  
Environmental Services and Training Division  
P.O. Box 6064  
Morgantown, WV 26506  
800-624-8301/304-293-4191  
[www.estd.wvu.edu](http://www.estd.wvu.edu)

- National Environmental Training Center for Small Communities (NETCSC)  
[www.netc.wvu.edu](http://www.netc.wvu.edu)
- National On-Site Demonstration Project (NODP)  
[www.nodp.wvu.edu](http://www.nodp.wvu.edu)
- National Small Flows Clearinghouse (NSFC)  
[www.nsfc.wvu.edu](http://www.nsfc.wvu.edu)

Rural Community Assistance Program (RCAP)  
722 East Market Street, Suite 105  
Leesburg, VA 20176  
888-321-7227/703-771-8636  
[www.rcap.org](http://www.rcap.org)