

Other Pamphlets in EPA's CAFO Clean Water Act Requirements Information Series

Will My Operation Be Regulated?
EPA 833-F-02-006

What Are the Federal Requirements for Swine CAFOs?
EPA 833-F-02-007

What Are the Federal Requirements for Chicken and Turkey CAFOs?
EPA 833-F-02-008

What Are the Federal Requirements for Dairy Cow and Heifer CAFOs?
EPA 833-F-02-009

What Are the Federal Requirements for Beef Cattle and Veal Calf CAFOs?
EPA 833-F-02-0010

What Are the Federal Requirements for Horse and Sheep CAFOs?
EPA 833-F-02-0011

What Are the Federal Requirements for Duck CAFOs?
EPA 833-F-02-0012

How do I contact my permitting authority?

Visit www.epa.gov/npdes/afo/statecontacts for contact information on your permitting authority.

Where can I get copies of these brochures and more information?

Call the Office of Water Resource Center, (202) 566-1729 to request copies of these pamphlets and other documents. Call the CAFO Phone Line at (202) 564-0766 with questions or visit the following EPA or USDA web sites.

EPA:

www.epa.gov/npdes/caforule
www.epa.gov/agriculture

USDA:

www.usda.gov

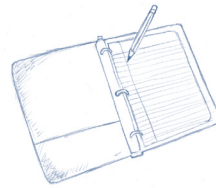
EPA 833-F-02-0013
December 2002



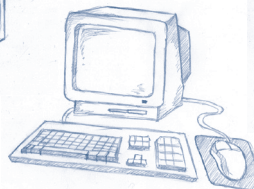
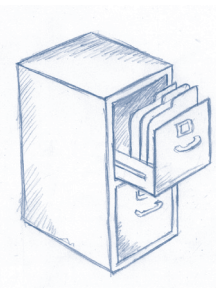
Concentrated Animal Feeding Operations

Clean Water Act Requirements

What Are The Federal Record-Keeping and Reporting Requirements?



In December 2002, EPA revised the Clean Water Act regulation for Concentrated Animal Feeding Operations, or CAFOs. This pamphlet explains the record-keeping and reporting requirements in the revised CAFO regulations.



Information Series Pamphlet

United States
Environmental Protection Agency (4203)
Washington, DC 20460
Official Business
Penalty for Private Use \$300

If you own or operate a CAFO, you must keep records on how you manage nutrients and waste from your operation. Here are the minimum requirements for record keeping and reporting:

See the CAFO Pamphlet *Will My Operation Be Regulated?* to find out if your facility is a CAFO.

- ✓ You must keep all of your records on-site at your CAFO for at least 5 years.
- ✓ You must provide your records to your permitting authority on request.

What records do I have to keep?

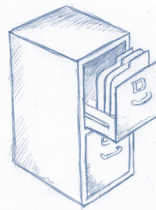
Your permitting authority can tell you what records you have to keep for your CAFO. Your requirements may depend on the size of your CAFO. You can expect the requirements to include at least the following kinds of records.

You may need to keep more records, so you should always check with your permitting authority to find out exactly what records are required in your state.

Record-keeping requirements for all CAFOs

Information about your operation, such as

- ✓ A copy of your nutrient management plan and any supporting materials
- ✓ What you did to carry out your nutrient management plan



Record-keeping for requirements for Large CAFOs

Records of manure or wastewater transfers, such as

- ✓ When you sold or gave away manure or wastewater
- ✓ To whom you sold or gave manure or wastewater
- ✓ How much manure or wastewater you gave away
- ✓ The current manure and wastewater analysis of the manure and wastewater you gave away

Records for your animal housing and manure storage area, such as

- ✓ When you did visual inspections of your manure, water, and wastewater storage and handling systems
- ✓ What you did to correct problems that you noticed during your visual inspections
- ✓ How much room is left in your manure and wastewater storage structures
- ✓ The design volume and capacity of your manure and wastewater storage structures
- ✓ If there was an overflow from your manure or wastewater storage and handling systems, when the overflow happened, and how much manure or wastewater spilled
- ✓ How you disposed of dead animals



Source: USEPA OECA

Records for land where you spread manure or wastewater, such as

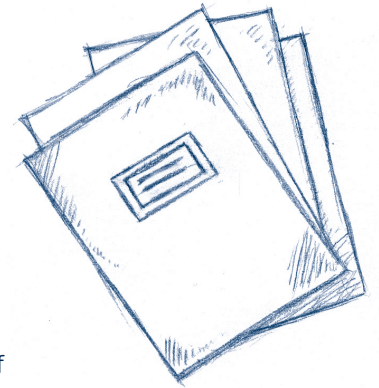
- ✓ How you calculated your manure application rate
- ✓ Your expected crop yield
- ✓ When and how you applied manure or wastewater to each field
- ✓ What the weather was like before, during, and after you applied manure or wastewater to each field
- ✓ The results of your manure, wastewater, and soil sampling and how you sampled
- ✓ How much soil phosphorus is in each field
- ✓ How much nitrogen and phosphorus you planned to apply to each field
- ✓ How much nitrogen and phosphorus you actually applied
- ✓ When you inspected your equipment



Source: USDA

What do I have to report?

Once a year, you must send a report to your permitting authority. Your permitting authority can tell you exactly what to put in your report. They will ask you for the following kinds of information:



- ✓ How many and what kind of animals are in your CAFO?
- ✓ How much manure and wastewater did you generate during the year?
- ✓ How much manure and wastewater did you sell or give away?
- ✓ How many acres of land did you use to apply manure and wastewater?
- ✓ How many acres does your nutrient management plan cover?
- ✓ Were there any discharges to surface water during the year?
- ✓ Did a certified nutrient management planner develop or approve your nutrient management plan?



Source: USEPA OECA

See the other EPA CAFO pamphlets to find what your permit might require.