



The Superfund Jobs Training Initiative (SuperJTI)

What is SuperJTI?

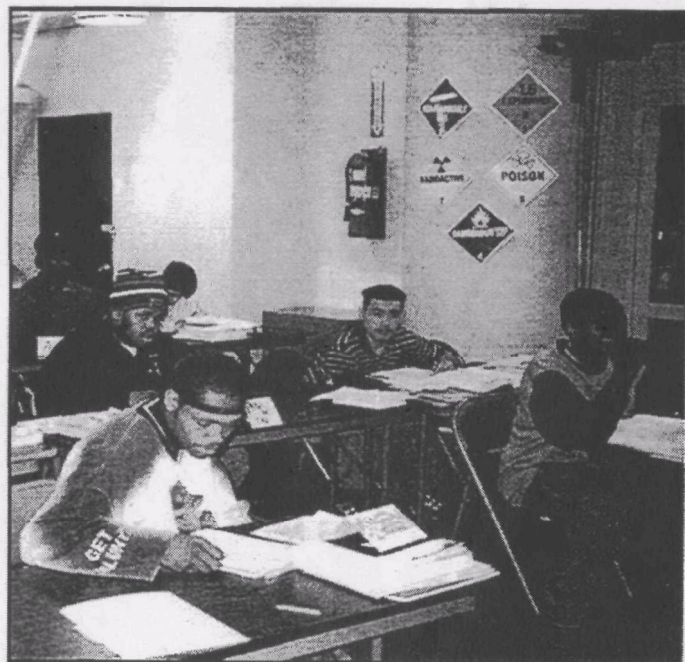
- *SuperJTI is a new initiative that provides training to community residents and promotes their employment with Superfund site cleanup contractors.*

EPA's SuperJTI focuses on job training for residents living near Superfund sites, particularly in disadvantaged communities. Residents who take part in the program will gain career skills and participate in the environmental remediation activities in their neighborhood. SuperJTI is a positive step in addressing concerns of communities affected by Superfund sites.

The initiative combines extensive classroom instruction and hands-on work experience for each participant. Upon completion of the program, each participant will possess marketable skills and become a valuable member of the community's workforce.

Pre-Employment Training

Pre-employment training and classroom instruction are important components of SuperJTI. EPA has partnered with the National Institute of Environmental Health Sciences (NIEHS) to provide such training. Through a NIEHS worker training program, participants receive several weeks of life skills and pre-employment training along with additional weeks of environmental and technical training (e.g., 40-hour Hazardous Material training, lead abatement training, asbestos abatement



training). The technical training teaches the requirements of site health and safety that prepare participants for site work.

If training is not available to the community through a NIEHS worker training program, EPA will work with the community to provide training through alternative sources.

SuperJTI is designed to be flexible in meeting the needs of both the community and the cleanup contractor. The program consists of two separate tiers: Tier 1 is a basic jobs training program while Tier 2 is more extensive and includes the Department of Labor's registered apprenticeship program. Both tiers include classroom instruction and pre-employment training.

Tier 1 Basic Jobs Training

EPA facilitates the training of local residents for positions with cleanup contractors. Contractors are encouraged to participate in the SuperJTI by hiring candidates who have successfully completed all training. The available

EXTRA!!! The Times EXTRA!!!

HELP WANTED

-- Superfund Job Openings --
Training Provided

opportunities may range from entry-level to advanced positions, and may include some of the following:

- Providing site security
- Stocking and tracking materials inventory
- Acquiring materials from local resources
- Tracking trucks entering or leaving site
- Participating in site cleanup
- Supporting decontamination
- Assisting in sample collection and laboratory activities.

Tier 2 Apprenticeship Training

Tier 2 provides more in-depth occupational training than the entry-level job training offered in Tier 1. Applicants enroll in the Department of Labor's registered apprenticeship program and complete at least 2,000 hours of on-the-job training in a variety of skills in one particular occupation. A sampling of the over 800 apprenticeship training occupations offered by the program includes:

- Environmental Analyst
- Well Drill Operator
- Construction Worker
- Laboratory Technician
- Plant Operator
- Welding Technician
- Hazardous Waste Materials Technician
- Industrial Engineering Technician

EPA is working with the Department of Housing and Urban Development (HUD) to model SuperJTI Tier 2 after HUD's Step-Up Program. Their Step-Up program incorporates an apprenticeship program that provides employment opportunities for housing residents.



What are the Benefits?

- *SuperJTI is a "win-win-win" program that benefits communities, residents, and contractors.*

Communities—opportunity to strengthen local economic base, boost community involvement, increase worker skills, and restore the environment.

Residents—opportunity to learn new career skills; earn wages; upgrade knowledge of local Superfund effort; and participate in rebuilding their communities.

Contractors—opportunity to hire local, trained workers; possible eligibility for tax incentives (e.g., Empowerment Zones); and build goodwill in the community by playing an important role in boosting local economy and restoring the environment.

How Can You Participate?

- *To join this innovative effort, contact:*

**U.S. Environmental Protection Agency
Office of Emergency and Remedial Response
Superfund Community Involvement
and Outreach Center
Mail Code 5204-G
401 M Street SW
Washington, DC 20460
Phone 703/603-8835 - Fax 703/603-9100**