



# Long-Term Contracting Strategy For Superfund

Office of Emergency and Remedial Response  
Office of Program Management OS - 240

Quick Reference Fact Sheet

## Introduction

The U.S. Environmental Protection Agency has developed a Long-Term Contracting Strategy for the Superfund program. The Agency's objectives in developing the strategy were to analyze the long-term contracting needs of the program, and to design a portfolio of Superfund contracts to meet those needs over the next ten years. This strategic planning effort was recommended by the 1989 Agency report on A Management Review of the Superfund Program.

## Background

The issues, analysis, and decisions contained in the strategy are the products of an Agency-wide task force comprising representatives from the ten Regions, the Office of Solid Waste and Emergency Response, the Office of Administration and Resources Management, and the Office of Small and Disadvantaged Business Utilization. The task force developed several contracting options, analyzed them, and selected elements of the options that best served each of the Superfund program functions.

The Long-Term Contracting Strategy for Superfund is built on several key principles. First, the strategy supports an integrated "One Program" approach to enforcement and site cleanup. Second, the strategy enhances the competitive environment by reducing the size of contracts and creating more opportunities for small and disadvantaged businesses. Third, the strategy provides mechanisms for greater flexibility and improved oversight and cost management by giving the Regions full responsibility for the contracts.

This strategy is intended to be a road map for the next decade of Superfund contracting. We will continue to evaluate the strategy in light of changes that may occur in the program. Implementation plans are under development with the goal of phasing-in elements of the new strategy without program disruption or any termination of existing contracts. Copies of the Long-Term Contracting Strategy for Superfund are available from the Superfund Docket and Information Center, OS - 245, Room 2427, EPA Headquarters, 401 M St. SW, Washington, DC 20460, telephone - (202) 382-6940.

The following describes the principal components of the Superfund Long-Term Contracting Strategy by program function.

---

---

### Enforcement Contract Support

- Enforcement Support Contracts - Provides support for specific enforcement-related activities (e.g., litigation support, potentially responsible party searches).
- Contracts will be competed and managed on a regional basis.
- Response Action Contracts - Oversight functions will be moved to remedial contracts.

---

---

### Regional Management Contract Support

- Regional Management Support - Provides support for administrative and information management activities in the region.
- Contracts will be competed and managed on a regional basis.

---

---

### Removal Contract Support

- Field Investigation Team / Technical Assistance Team - Provides support for removal technical assistance and will be competed and managed on a regional basis.
- Technical assistance contracts will be combined with preremedial activities.
- Time Critical/Rapid Response Activities - Continues approach of time-critical response support competed and managed on a regional basis.
- Time-critical response activities will be combined with rapid remedial response activities.
- Response Action Contracts - Non-time-critical removal actions will be combined with remedial contracts.

---

---

### Analytical Contract Support

- Environmental Services Assistance Team - Continues environmental services dedicated support and will be competed and managed on a regional basis.
- Contract Laboratory Program - Defers decision on decentralizing the Contract Laboratory Program. Additional analysis is ongoing.

---

---

### Preremedial Contract Support

- Field Investigation Team / Technical Assistance Team - Provides support for preremedial activities (e.g., preliminary assessments and site inspections) and will be competed and managed on a regional basis.
- Combines dedicated team programs of preremedial support and removal technical assistance into one integrated contracting program.
- Response Action Contracts - Will use the Alternative Remedial Contracting Strategy contracts to provide preremedial support until the combination with removal technical assistance can be phased-in.

---

---

### Remedial Contract Support

- Response Action Contracts - Provides support for all remedial activities and will be managed on a regional basis using existing Alternative Remedial Contracting Strategy contracts.
- Combines all enforcement oversight activities into the contracting program and permits the conduct of nontime-critical removal actions.
- Existing Alternative Remedial Contracting Strategy contracts will also be used to provide interim preremedial support.

---

---

### Site Specific Contracts

- Site Specific Contracts - Provides contract support tailored to the needs of a specific site or types of sites or contaminants or activities.
- Will be competed where time allows.

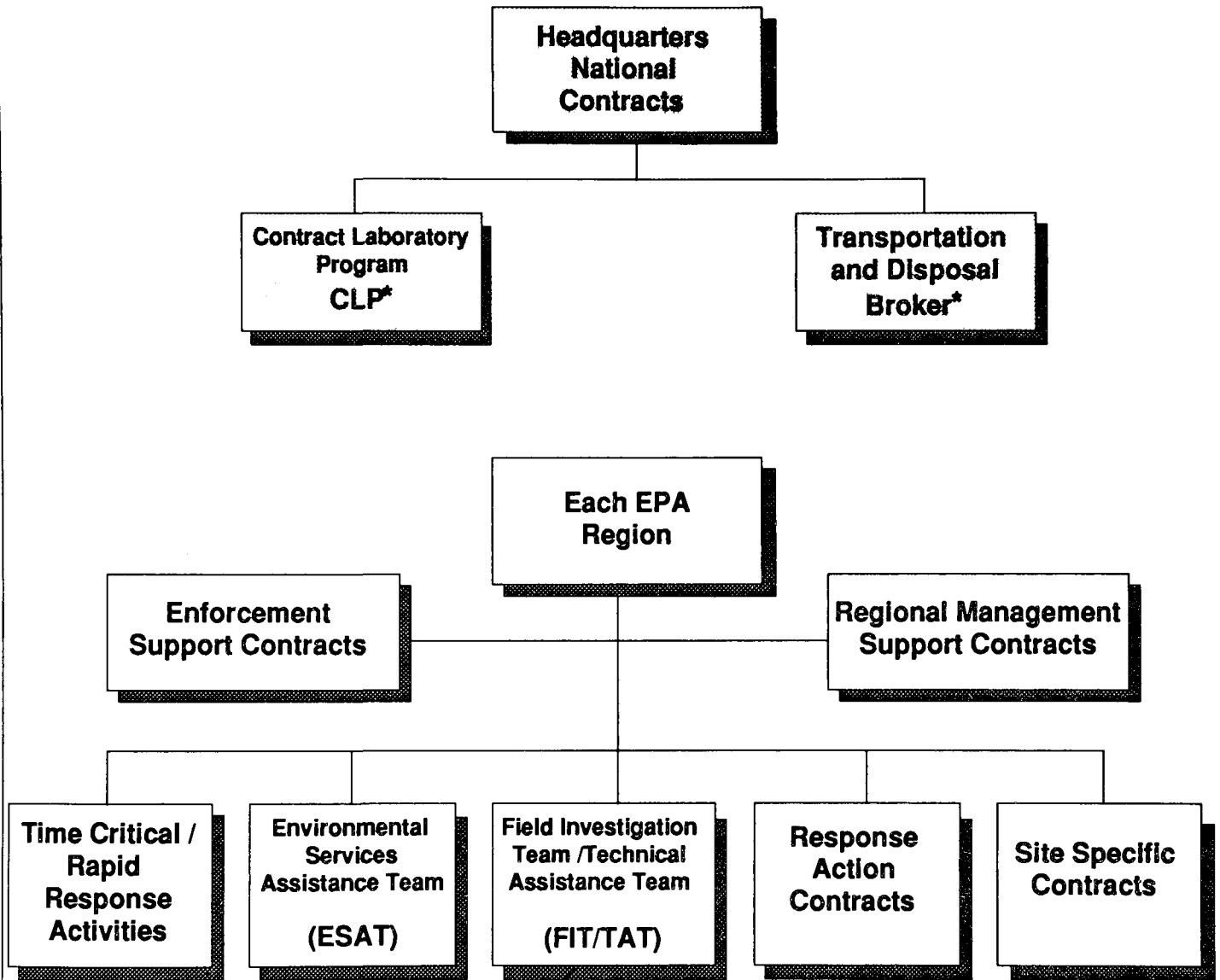
---

---

### Transportation and Disposal Contract Support

- Transportation and Disposal Broker - Provides assistance in resolving technical difficulties in making arrangements for transportation and disposal of hazardous substances.
- Concept will require additional analysis and definition. Future efforts will focus on the development of this concept.

# Long-Term Contracting Strategy for Superfund



\* Decision on decentralizing CLP deferred. CLP and Transportation and Disposal Broker require further study.