

*environmental scientists environmental engineers natural resource specialists microbiologists chemists*

*biologists hydrologists geologists PRESERVING OUR FUTURE TODAY environmental scientists*

*environmental engineers natural resource specialists microbiologists chemists biologists hydrologists*

*geologists PRESERVING OUR FUTURE TODAY environmental scientists environmental engineers natural*

*resource specialists microbiologists chemists biologists geologists PRESERVING OUR FUTURE TODAY*

*environmental scientists environmental engineers natural resource specialists microbiologists chemists*

*biologists CAREERS IN ENVIRONMENTAL RESEARCH hydrologists*

*geologists PRESERVING OUR FUTURE TODAY environmental scientists environmental engineers natural*

*resource specialists microbiologists chemists biologists hydrologists geologists environmental*

*scientists environmental engineers natural resource specialists microbiologists chemists biologists*

*hydrologists geologists environmental scientists environmental engineers PRESERVING OUR FUTURE TODAY*

*l engineers natural resource specialists microbiologists chemists biologists hydrologists geologists*



*microbiologists UNITED STATES ENVIRONMENTAL PROTECTION AGENCY geologists*

ETED  
EPA  
210/  
K-92  
-009

OUR WORKFORCE AT EPA IS ONE OF GREAT

DIVERSITY. WHATEVER YOUR OCCUPATION, YOUR

INVOLVEMENT IS IMPORTANT AND NECESSARY,



U.S. EPA  
OPPTS Chemical Library  
401 M St. SW, MC7407  
Washington, D.C. 20460  
(202) 260-3944

AND YOUR EFFORTS ESSENTIAL TO FULFILLING

THE MISSION OF THE UNITED STATES

ENVIRONMENTAL PROTECTION AGENCY.

αLC#28553173

DEC 30 1999

AUG 17 1993 P/C



# PRESERVING OUR FUTURE TODAY

## *EPA Highlights*



In 1974, the Safe Drinking Water Act (SDWA) authorized EPA to establish regulations to limit the amount of various substances in water used for drinking.



The 1987 Clean Water Act amendments require certain industries to "pretreat" their wastewater so that toxic chemicals and other harmful substances do not enter sewage systems that were not designed to treat them.



The new Clean Air Act contains provisions for large reductions in emissions of sulfur dioxide and nitrogen oxides to combat acid rain. The new national goal for year 2000 is to reduce SO<sub>2</sub> emissions nationwide by 10 million tons.



The Resource Conservation and Recovery Act regulates hazardous waste from over 200,000 generators, through transportation, storage and treatment to final disposal. Hazardous waste handlers must now clean up contamination resulting from past waste management practices as well as from current activities.



Work is underway to reduce municipal solid waste through a combination of source reduction and recycling measures.



The 1990 Farm Bill could further reduce agricultural pesticide use and enhance environmental quality. This includes promoting more environmentally sound crop rotation practices, promoting research and education, and providing incentives for farmers to adopt more environmentally sound habits.



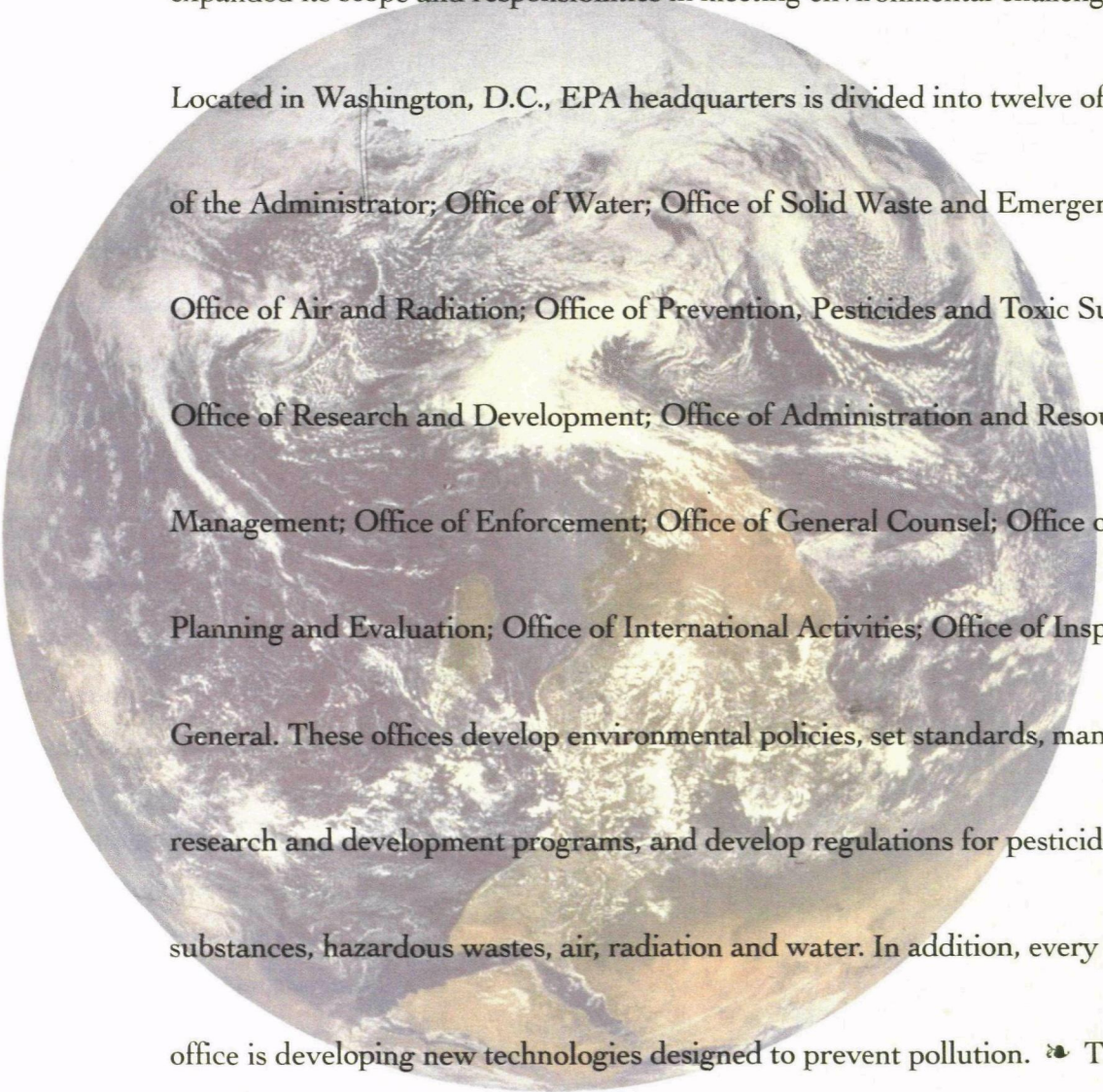
**W**e're a dynamic team of diverse people dedicated to improving and preserving the quality of the environment. 🌱 The United States Environmental Protection Agency

(EPA) was founded in December 1970 to consolidate the government's environmental

## **INTRODUCTION TO EPA. . .**

regulatory activities into a single agency. Over the past 20 years, EPA has greatly expanded its scope and responsibilities in meeting environmental challenges. 🌱

Located in Washington, D.C., EPA headquarters is divided into twelve offices: Office of the Administrator; Office of Water; Office of Solid Waste and Emergency Response; Office of Air and Radiation; Office of Prevention, Pesticides and Toxic Substances; Office of Research and Development; Office of Administration and Resources Management; Office of Enforcement; Office of General Counsel; Office of Policy, Planning and Evaluation; Office of International Activities; Office of Inspector General. These offices develop environmental policies, set standards, manage complex research and development programs, and develop regulations for pesticides, toxic substances, hazardous wastes, air, radiation and water. In addition, every EPA program office is developing new technologies designed to prevent pollution. 🌱 There are also ten Regional Offices which administer EPA programs and provide technical assistance to state, local and tribal governments. World-class research and development in all the environmental disciplines is carried out in our 20 research facilities. 🌱 At last count, EPA employed almost 19,000 and the numbers continue to grow.







Treatment and disposal  
of waste are not  
enough; pollutants must  
be prevented from being  
generated in the first  
place. We have learned  
the inherent limitations  
of treating and burying  
waste. A problem  
solved in one part of the  
environment may  
become a new problem  
in another part. We  
must curtail pollution  
closer to its point of  
origin so that it is not  
transferred from place  
to place.



## SETTING STANDARDS

EPA is responsible for setting standards that help protect the public's health and welfare. Whether this involves restricting pesticide use or setting emission levels for automobiles, EPA is taking steps to ensure a cleaner future.

## ENFORCEMENT AND MONITORING

The Agency's philosophy has been to encourage voluntary compliance by private industry and communities, and ensure that state, local and tribal governments perform enforcement activities necessary to meet EPA standards.

Various types of monitoring processes and activities exist within EPA. Some are broadly based monitoring programs that determine whether pollution levels

and emissions are increasing or decreasing. Other methods of

evaluation determine if the various abatement programs



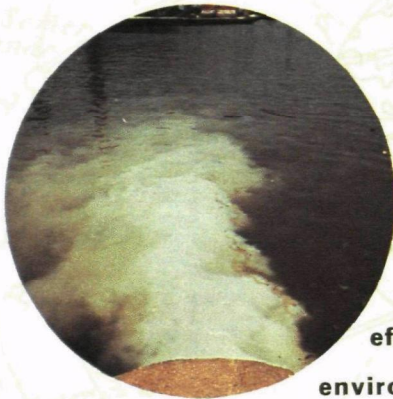
**EPA's 20 year  
efforts toward a cleaner  
environment and improved**

human health have been vigorous. Worldwide, the belief that industry cannot endure the restrictions of environmental controls, is being replaced by an awareness of industry's role in nurturing the environment. Protecting the planet is a huge commitment and to be successful it will take everyone working together. Complementing EPA's efforts have been state, tribal and local governments, citizen's environmental organizations, and countless individuals, many of whom have been working on pollution control for years. EPA has developed five new themes which reflect future directions for ensuring a cleaner environment: pollution prevention, voluntary action, reducing risks, economic incentives, protecting natural resources. It's time to develop a new pattern of environmental management — working with nature.

developed by EPA and state and local governments are as effective as they should be.



## TRENDS FOR THE FUTURE



## CAREERS IN ENVIRONMENTAL RESEARCH

EPA headquarters is located in Washington, D.C., one of the country's most culturally-rich areas. Although one-third of EPA's positions are in our nation's capital, we hire environmental researchers at all ten Regional Headquarters and Field Offices. The Regional Offices are located in major cities throughout the U.S. with Field Offices and labs located in areas that geographically and environmentally enhance each lab's mission.

### GEOGRAPHIC LOCATIONS

#### Research and Development Laboratories

MD-29  
Research Triangle Park, NC 27711  
919 541-4268

26 W. Martin Luther King Dr.  
Cincinnati, OH 45268  
513 569-7812

P.O. Box 98516  
Las Vegas, NV 89193-8516  
702 798-2401

#### Also serves labs in:

Ada, OK  
Athens, GA  
Corvallis, OR  
Duluth, MN  
Edison, NJ  
Grosse Ile, MI  
Gulf Breeze, FLA  
Narragansett, RI  
Newport, OR  
Warrenton, VA

#### Field Offices

Denver, CO  
303 236-5114

Ann Arbor, MI  
313 668-4220



Science and technology are becoming increasingly important factors in EPA decisions, especially as we become more aware of global environmental problems.

A scientific agency, as well as a regulatory agency, we have a responsibility to conduct environmental research.

EPA relies on its research and development office to develop, integrate, and assess scientific and technical information.

EPA's research and development efforts are handled by 12 scientific research laboratories located around the country.

Through contracts, grants, and cooperative agreements with universities and private companies, the nearly \$500 million per year in research programs is supported by a Science Advisory

Board composed of independent experts from a large number of fields associated with environmental sciences.



**PRIMARY RESEARCH PROGRAMS** • The research and development efforts involve six major activities: • **Research in environmental engineering and technology** looks at pollution from industrial and municipal sources, and examines technologies to reduce or prevent such pollution. • **Environmental processes and effects research** develops information to predict and manage the movement of pollutants through the environment and determines their effects on ecosystems, plants and animals. • Through

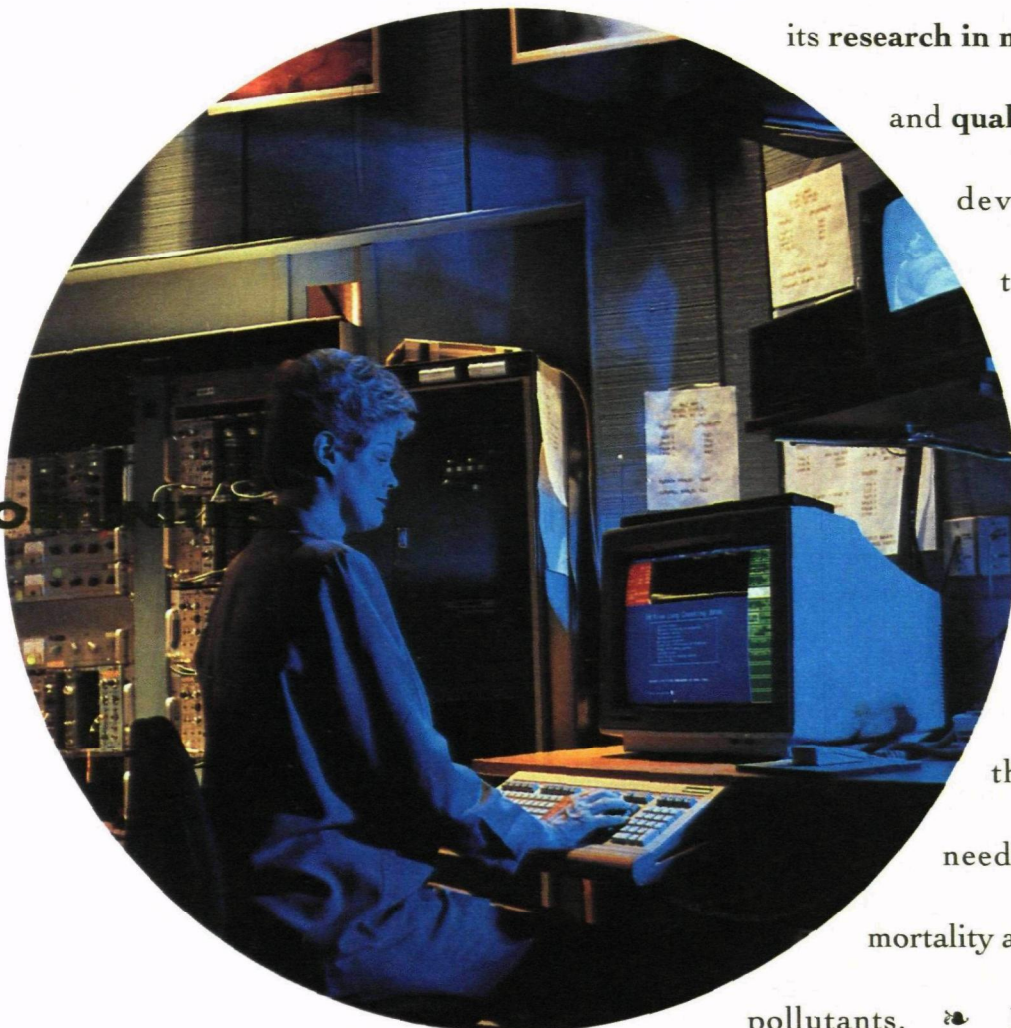
its **research in monitoring systems** and **quality assurance**, EPA develops procedures to describe, monitor, and predict the levels of pollutants in the environment.

• **Health effects research** provides the information we need to estimate human mortality and illness caused by pollutants. • **EPA's health and**

**environment assessment research** provides a scientific basis for judging the health and environmental effects of exposure to a substance. It also helps in determining the relative risks of such exposure. • The Agency's **exploratory grants program** funds strategic



environmental research in universities to support much larger EPA-directed environmental research programs.





## JOB OPPORTUNITIES

The environmental research team can enjoy contributing to research which has a direct impact on the future of our earth. Some of the disciplines which are most needed to conduct this important research and development work are:

- Operations Research
- Physical Sciences Research
- Biological Research
- Environmental Engineering
- Chemical Engineering
- Health Research



The researchers at EPA are working on real issues and problems and looking for innovative technologies to prevent pollution. Some examples of the specific research we are engaged in:

### HEALTH EFFECTS RESEARCH

to determine the adverse effect of pollutants on human health.

### ECOLOGICAL EFFECTS RESEARCH

to determine the adverse effects of pollutants on the ecosystems.

### ENVIRONMENTAL PROCESSES AND FATE RESEARCH

to understand how pollutants are transported and modified as they move through soils, ground, surface waters and the atmosphere.

### ENVIRONMENTAL MONITORING RESEARCH

to develop methods of identifying pollutants in the environment and measuring exposure to such substances.

### RISK ASSESSMENT RESEARCH

to develop methods of integrating information on pollutant sources, fate and transport, exposure, health and ecological effects in order to assess the overall risk posed by pollutants.

### RISK REDUCTION RESEARCH

to develop control technologies to treat, destroy, or contain pollutants; to develop methods to reduce or eliminate the sources and to prevent exposure to pollutants. The researchers at EPA are working on real issues and problems which give us answers on how to improve and preserve our future. Some specific types of research our scientists and engineers are engaged in include:

- **Global Warming:** Develop and evaluate statistical methods and air quality models to detect and predict the impact of the emissions of trace gases on climate and air quality levels.
- **Water Quality Based Approach:** Provide assurance that ambient water quality monitoring data for regulation setting, enforcement, or compliance purposes are scientifically valid and legally defensible.
- **Hazardous Waste Releases:** Provide aerial photography, satellite imagery, and multispectral scanner support to assist regional offices in spill prevention, control and counter-measure surveys, planning and emergency response.
- **Exposure Monitoring:** Monitor dietary, non-dietary, and residential exposure scenarios to investigate human exposure to pesticides.
- **Pollution Prevention:** Provide technical foundations for encouraging the development and adoption of production, recycling and treatment processes that result in the reduction of volume or hazardous nature of waste generated.



## JOB REQUIREMENTS

**E**PA's research program requires the dedicated work of scientists, engineers, technicians, and administrative staff in order to meet the demands of designing and implementing a comprehensive research and development program. If you are an individual who thrives on being on the cutting edge of development of new ideas and processes, and seeing the results of your work make a difference, you will find the challenges presented in the environmental arena most

rewarding. As you would expect many of the research positions require advanced scientific and/or engineering degrees. Most jobs at EPA are in the competitive service, which means that applicants compete with other candidates and must be evaluated by the U.S. Office of

Personnel Management or through a competitive process managed by the EPA.

Job requirements vary from position to position. Most professional research staff will be required to hold advanced degrees in their area of expertise. For mid-level and senior-level positions relevant experience may also be required. Specific information on EPA research vacancies can be obtained through one of the EPA Human Resources Offices. Research Triangle Park, North Carolina; Cincinnati, Ohio; and Las Vegas, Nevada are key offices in providing personnel support to our laboratories across the country.



There are hundreds of jobs in EPA for you to investigate and three basic career steps to organize your search. first, learn about yourself in order to assess your own skills, values and interests. Second, learn about various types of work and research your job opportunities. Third, find the educational and job pathways that will lead you where you want to go. If you are already in the profession of your choice and wish to join EPA, call EPA Human Resources Office in the location that you wish to seek employment.



## HOW TO APPLY

**W**e're looking for high quality people — hard workers and self-starters willing to persevere in any task undertaken. For most research positions it is important to respond to a specific job vacancy which will specify the skills, knowledge and abilities required for the position. With that information you can then tailor your Application for Federal Employment (Standard Form 171) to meet the need of the position being advertised. It is very important to provide any documentation required to support your application such as transcripts, list of publications, as requested on the vacancy announcement. ♣ Candidates wishing to obtain information on vacancies can contact any EPA Human Resources Office, the Office of Personnel Management's Job Information Center (look in your local telephone book under "US Government"), or you can subscribe to a private publication which provides information on vacancies across the Federal Government.

## EPA HUMAN RESOURCES OFFICES

**EPA-Environmental Research Lab**  
200 SW 35th Street  
Corvallis, OR 97330

**EPA-Air and Energy Engineering Research Lab**  
Highway 54 and  
Alexander Drive (MD-60)  
Research Triangle Park,  
NC 27711

**EPA-Risk Reduction Engineering Lab**  
26 Martin Luther King Drive  
Cincinnati, OH 45268

**EPA-Atmospheric Research and Exposure Assessment Lab (MD-59)**  
Highway 54 and  
Alexander Drive  
Research Triangle Park,  
NC 27711

**EPA-Environmental Criteria and Assessment Office**  
Highway 54 and  
Alexander Drive  
Research Triangle Park,  
NC 27711

**EPA-Center for Environmental Research Information**  
26 Martin Luther King Drive  
Cincinnati, OH 45268

**EPA-Environmental Monitoring Systems Lab**  
26 Martin Luther King Drive  
Cincinnati, OH 45219

**EPA-Environmental Research Lab**  
College Station Road  
Athens, GA 30613

**EPA-Office of Senior ORD Official (MD-50)**  
Highway 54 and  
Alexander Drive  
Research Triangle Park,  
NC 27711

**EPA-Environmental Monitoring Systems Lab**  
944 East Harmon Street  
Las Vegas, NV 89193

**EPA-Health Effects Research Lab**  
Highway 54 and  
Alexander Drive  
Research Triangle Park,  
NC 27711

**EPA-Environmental Research Lab**  
6201 Congdon Boulevard  
Duluth, MN 55804

**EPA-R.S. Kerr Environmental Research Lab**  
Kerr Lab Road  
Ada, OK 74820

**EPA-Environmental Research Lab**  
Sabine Island  
Gulf Breeze, FLA 32561

**EPA-Office of Senior ORD Official**  
26 Martin Luther King Drive  
Cincinnati, OH 45268

**EPA-Large Lakes and Rivers Research Branch**  
9311 Groh Road  
Grosse Ile, MI 48138-1697

**EPA-Releases Control Branch**  
Raritan Depot, Building 10  
Woodbridge Avenue  
Edison, NJ 08837-3679

**EPA-Pacific Ecosystems Branch**  
2111 SE Marine Science  
Drive  
Newport, OR 97365

**EPA-Office of Research and Development**  
Room NE-308-RD-674  
401 M Street, SW  
Washington, DC 20460

**EPA-Environmental Research Lab**  
South Ferry Road  
Narragansett, RI 02882





## SOURCES OF ENVIRONMENTAL CAREER INFORMATION

### Newsletters

Environmental Opportunities  
Box 670  
Walpole, NH 03608

Job-Scan  
The Student Conservation Assn., Inc.  
P.O. Box 550  
Charleston, NH 03603

The Job Seeker  
Rt. 2, Box 16  
Warrens, WI 54666

The Nature People  
Career Services  
P.O. Box 98  
Warrens, WI 54666

Environmental Careers  
Circulation Dept.  
760 Whalers Way, Suite 100-A  
Fort Collins, CO 80525

### Periodicals

Resource Recycling  
P.O. Box 10540  
Portland, OR 97210-9893

Biocycle  
Journal of Waste Recycling  
Emmaus, PA 18049

Buzzworm  
P.O. Box 6853  
Syracuse, NY 13217-7930

E: The Environmental Magazine  
P.O. Box 6667  
Syracuse, NY 13217-7934

Garbage  
P.O. Box 51647  
Boulder, CO 80321-1647

Friends of the Earth  
218 D Street, SE  
Washington, DC 20003  
202 544-2600

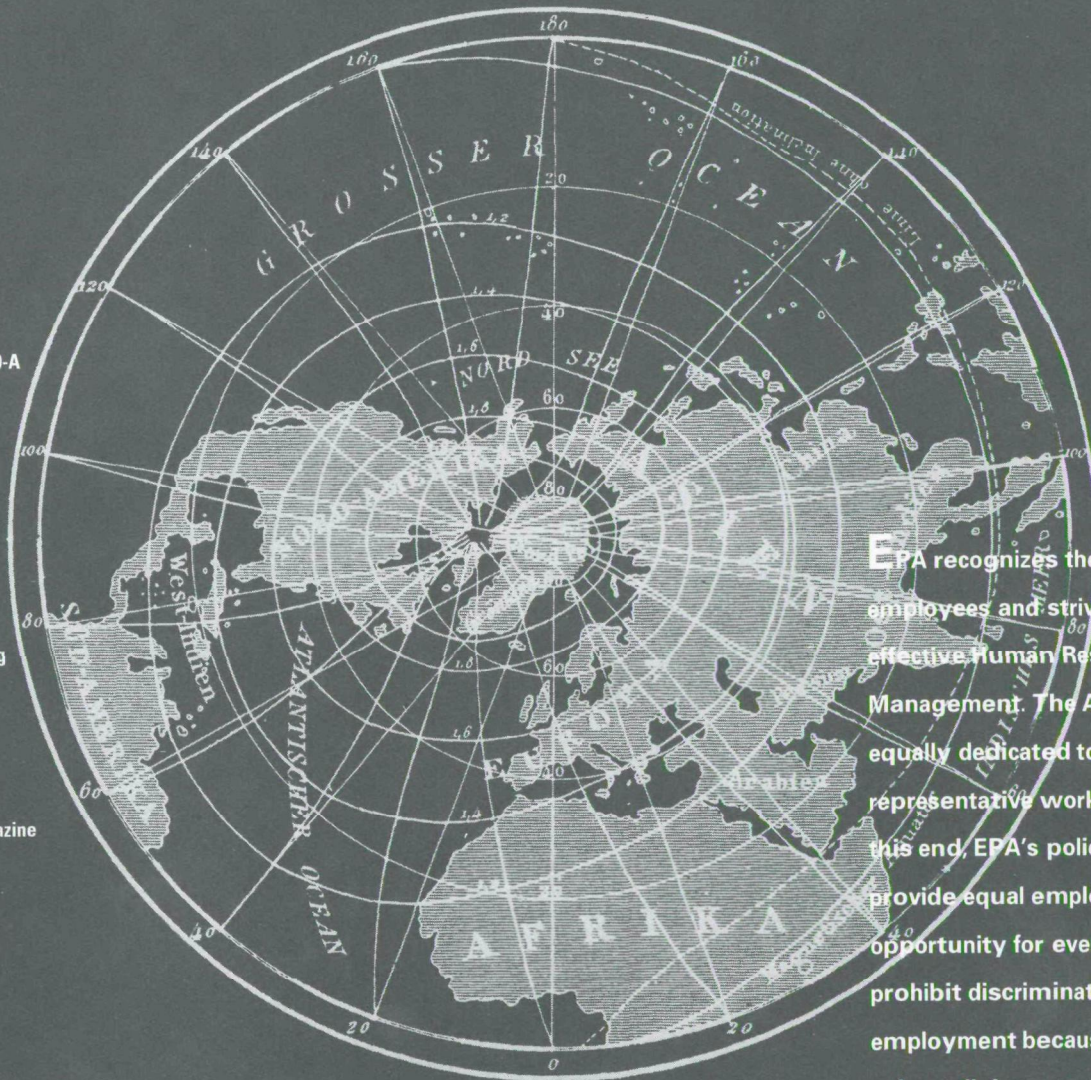
World Watch  
P.O. Box 6991  
Syracuse, NY 13217-9942

### Books

The Complete Guide to  
Environmental Careers  
Island Press  
Box 7, Dept. 4CC  
Covelo, CA 95428

Another way to help our  
environment—  
pass these materials on  
to another interested  
environmentalist.

*Reuse, Recycle, Restore.*



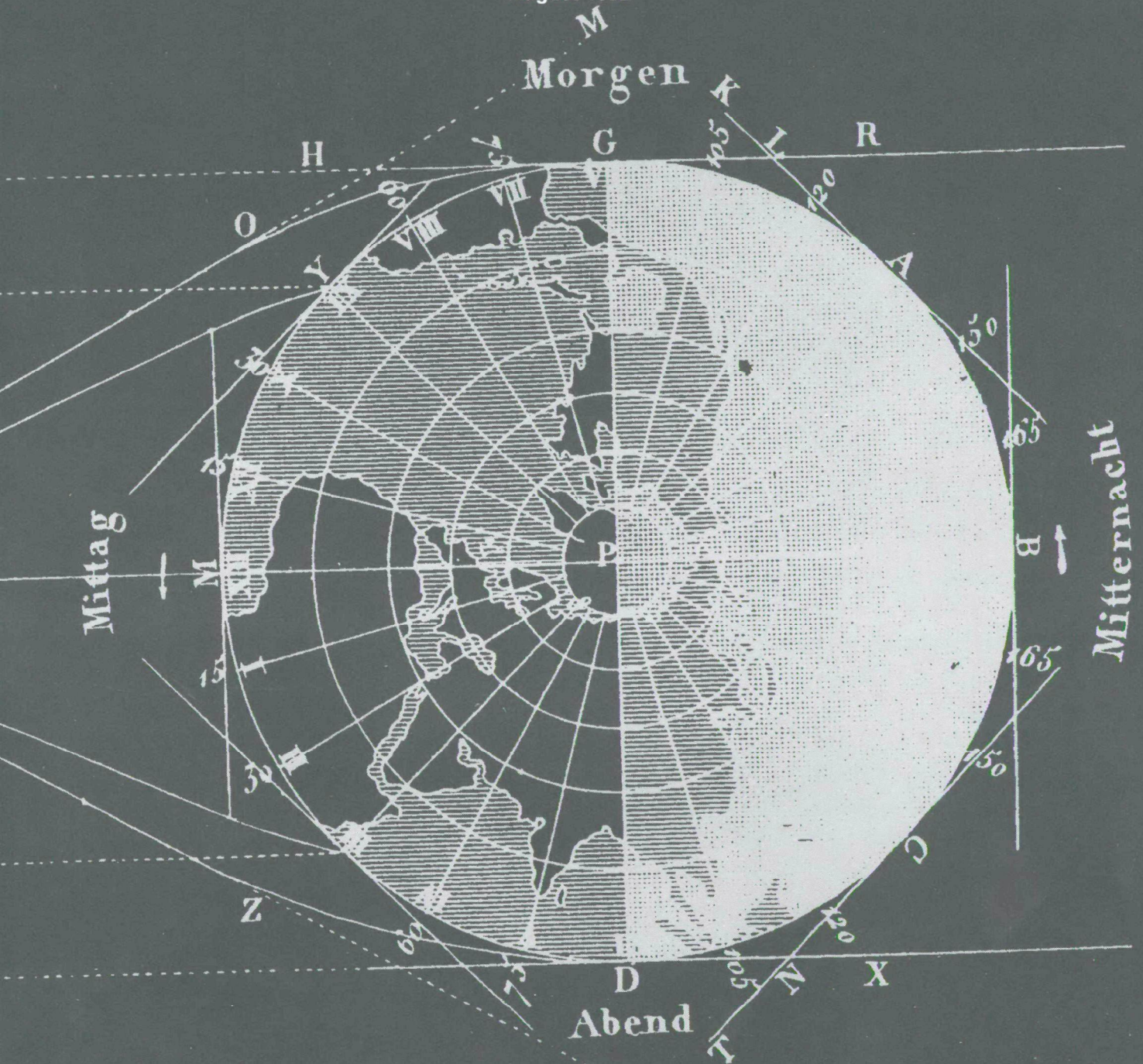
EPA recognizes the value of its employees and strives for effective Human Resources Management. The Agency is equally dedicated to achieving a representative work force. To this end, EPA's policy is to provide equal employment opportunity for everyone; to prohibit discrimination in employment because of race, color, religion, sex, age, national origin, or disability; and to promote the full realization of equal employment opportunities on the basis of merit and fitness through a continuing affirmative employment program.



United States  
Environmental Protection  
Agency

National Recruitment  
Program (PM 224)  
Washington DC 20460

EPA 210-K92-009  
August 1992



printed on recycled paper