



# Catalog of Office of Science and Technology Publications - 1993

## ACKNOWLEDGMENTS

Special thanks are due to the staff in the Office of Science and Technology who played an essential role in preparing this document. Particularly helpful were Frances Desselle of the Standards and Applied Science Division, Carol Swann of the Engineering and Analysis Division, and Pat Keitt of the Health and Ecological Criteria Division.

## NOTES TO THE READER

Your attention is drawn to a new section of this catalog for 1993: the Subject and Selected Title Index. This is an alphabetic listing of subject titles which will help you locate documents related to particular topics.

This catalog is available to anyone who is interested in information on the aspects of surface water quality and drinking water quality that are administered by the Office of Science and Technology in the Office of Water, U.S. EPA. If you would like a copy of this catalog, or if you would like to know what other documents are available (for example, documents related to water treatment, discharger permitting, water resource protection, or other subject areas), you should contact the Office of Water Resource Center, as follows:

Office of Water Resource Center, RC-4100  
U. S. Environmental Protection Agency  
401 M. St., S.W.  
Washington, D.C. 20460

202-260-7786 (voice mail publication request line)

*United States  
Environmental Protection  
Agency*

*Office of Water*

---

## **CATALOG OF OFFICE OF SCIENCE AND TECHNOLOGY PUBLICATIONS - 1993**

*September, 1993  
Policy and Communications Staff  
Office of Science and Technology  
U.S. Environmental Protection Agency  
Washington, D.C. 20460*

# **TABLE OF CONTENTS**

	<b><u>Page</u></b>
<b>INTRODUCTION</b>	<b>i</b>

---

Clean Water Act Overview .....	ix
Safe Drinking Water Act Overview .....	xi
How to Use This Catalog .....	xiii
Ordering Documents From NTIS .....	xiv
Ordering Documents From ERIC .....	xix

## **CATEGORIES OF DOCUMENTS**

---

1. Industrial Effluent Limitations and Guidelines .....	1
2. Pretreatment and Municipal Wastewater Effluent Limitations and Guidelines .....	38
3. Water Quality Standards .....	40
4. Ambient Water Quality Criteria .....	52
5. Biological Quality Criteria .....	65
6. Sediment Quality Criteria .....	66
7. Drinking Water Quality Criteria and Advisories .....	67
8. Water Quality Modeling and Waste Load Allocations .....	73
9. Analytical Laboratory Methods .....	77
10. Contaminated Sediments .....	82
11. Fish Tissue Quality .....	84
12. Municipal Sewage Sludge .....	85
13. Videotapes (Various Topics) .....	87
14. Great Lakes Guidance .....	88
15. Other .....	92
16. Datafiles and Software .....	94

<b>SUBJECT AND SELECTED TITLE INDEX</b>	<b>95</b>
---	-----------

---

## Introduction

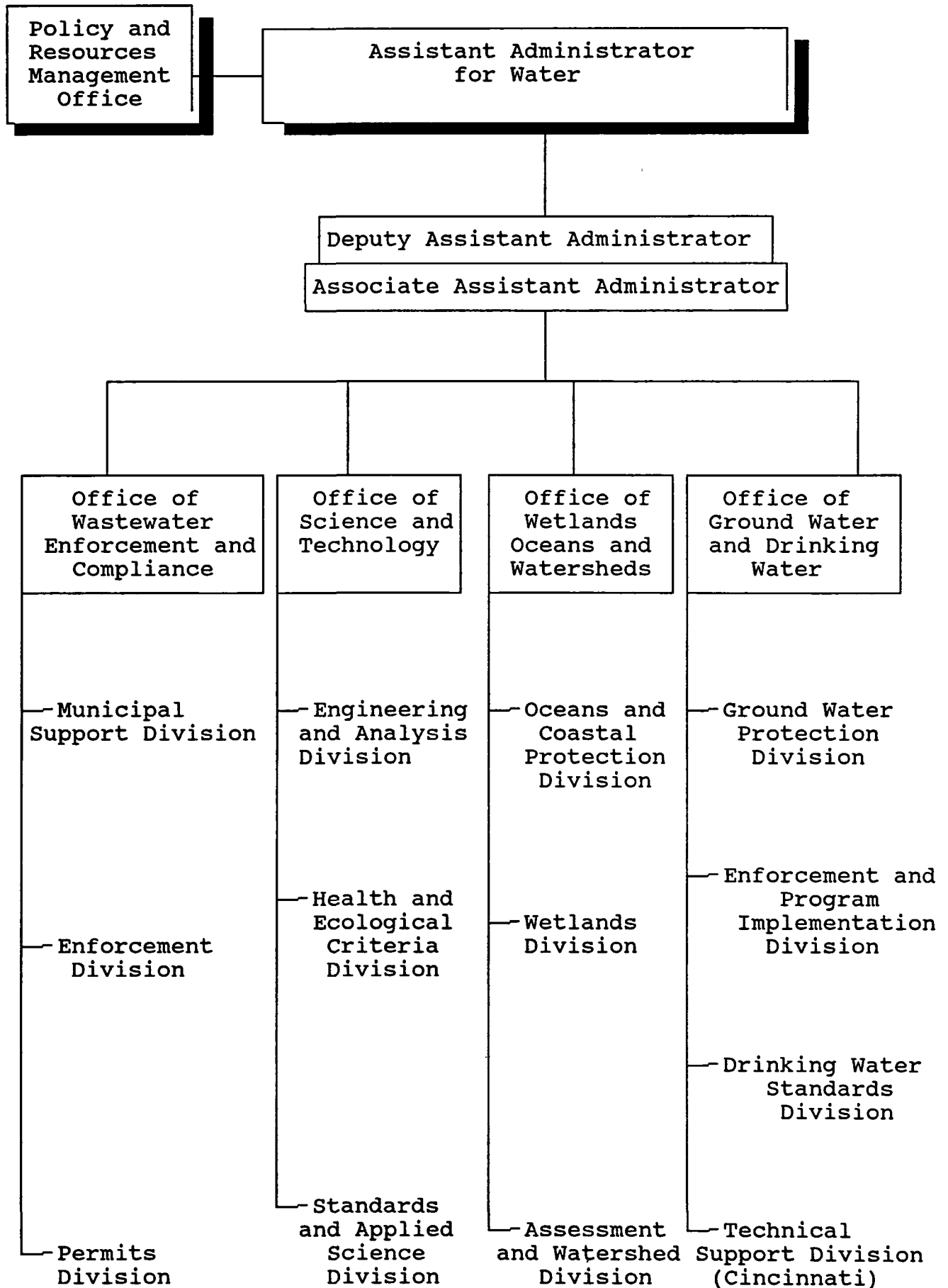
The Office of Science and Technology (OST) is responsible for developing sound, scientifically defensible standards, criteria, advisories, guidelines, limitations and standards guidelines under the Clean Water Act and the Safe Drinking Water Act. OST is also responsible for developing risk assessment methodologies and for providing risk assessment support for the Office of Water in the U.S. Environmental Protection Agency. These products articulate the goals and provide the regulatory framework for restoring and maintaining the biological, chemical, and physical integrity of the nation's water resources, for protecting the nation's public water supplies, and for achieving technology-based pollution control requirements in support of:

- \* point source (end of pipe) discharge programs
- \* nonpoint source programs
- \* wetlands programs
- \* drinking water programs
- \* dredge material management programs
- \* geographic-specific programs (e.g., Great Lakes, coastal, estuaries)

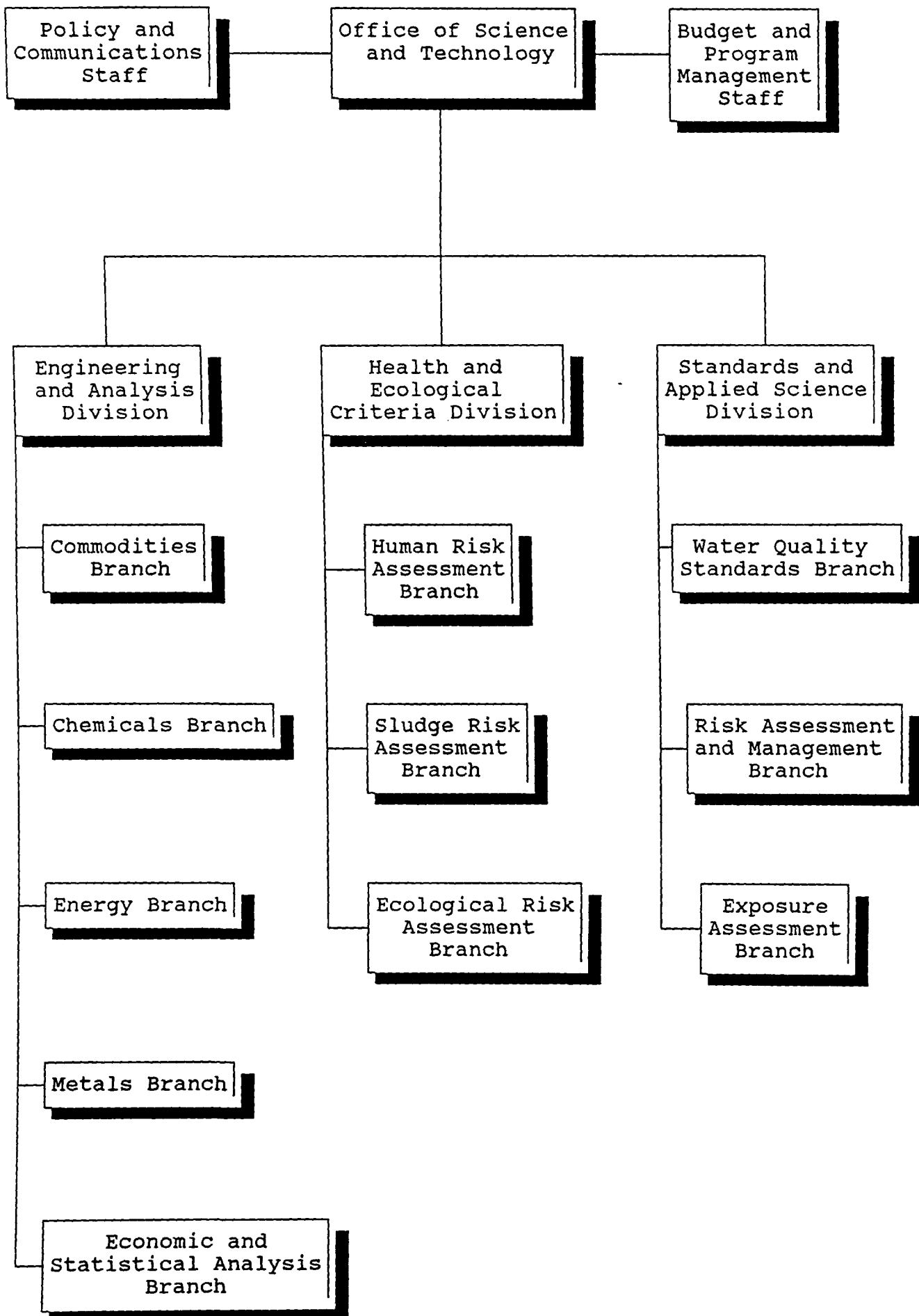
The Office of Science and Technology consists of several offices, which are discussed in the following sections:

- \* Engineering and Analysis Division
- \* Health and Ecological Criteria Division
- \* Standards and Applied Science Division
- \* Policy and Communications Staff
- \* Budget and Program Management Staff

# Office of Water Organization Chart



Office of Science and Technology  
Organization Chart





## **Engineering and Analysis Division**

The Engineering and Analysis Division's goal is to provide national technology-based effluent limitations for industrial facilities discharging directly into the nation's waters and pretreatment standards for industries discharging into municipal treatment facilities.

The Consumer Commodities, Energy Industry, Chemicals Industry, Economic and Statistical Analysis, and Analytical Methods branches comprise the Division. The Consumer Commodities Branch develops effluent limitations and standards for pulp and paper, leather, textiles, timber, and similar types of industries. The Chemicals Branch develops effluent guidelines for organic chemicals manufacturing, plastics, waste treatment, and all industrial categories involving metals, including battery manufacturing and photographics. The Energy Branch develops effluent guidelines for inorganic chemicals, oil and gas, and pesticides manufacturing. The Economic and Statistical Analysis Branch conducts economic studies and analyses and prepares economic impact and regulatory analyses to identify national, regional, and international effects and benefits of regulations developed by the Office of Water. Effluent guidelines provide a means for regulating pollutants, through discharge permits, that is founded on technology to treat wastewaters. The Analytical Methods Staff conducts wastewater sampling analysis, initiates development of analytical methods of detection of pollutants in wastewater, sludge sediment, and other media, revising existing methods and developing wastewater treatment regulations.

## **Health and Ecological Criteria Division**

The Health and Ecological Criteria Division (HECD) is responsible for developing sound, scientifically defensible criteria that articulate the goals for the nation's water resources through development and refinement of risk and exposure assessment methodologies. The Division provides all risk assessment methodologies and provides all risk assessment support for the Clean Water Act (CWA) and the Safe Drinking Water Act (SDWA), including maximum contaminant level goals (MCLGs) and health advisories. Specific criteria include:

- \* Health goals for drinking water
- \* Criteria for human health surface water
- \* Criteria for aquatic life surface water



- \* Sediment criteria
- \* Biological criteria
- \* Ecological criteria/habitat
- \* Municipal sludge regulations
- \* Human health risk assessment for water
- \* Ecological risk assessment for water
- \* Health advisories for drinking water
- \* Unreasonable Risk to Health Guidance

## **Standards and Applied Science Division**

The Standards and Applied Science Division's (SASD) responsibilities are to direct the national program for adoption of water quality standards, to develop policies and guidance on translation of criteria to specific waterbodies, and to develop and manage cross-media and multi-Agency policies to ensure exposure goals are attained. Other responsibilities include:

- \* National products such as guidance, regulations, policies, strategies
- \* Environmental assessments
- \* National assessment studies
- \* Management strategies for sediment contamination and fish contamination
- \* Total Maximum Daily Loads, wasteload allocations, mixing zones

**Primary Legislative Authority**  
**for the Office of**  
**Science and Technology**

## Clean Water Act Overview

The principal law governing pollution of the Nation's waterways is the Federal Water Pollution Control Act, or Clean Water Act. Originally enacted in 1948, it was totally revised by amendments in 1972 that gave the Act its current shape. The 1972 legislation spelled out ambitious programs for water quality improvement that are still being implemented by industries and municipalities. Congress made certain fine-tuning amendments in 1977, revised portions of the law in 1981, and enacted further amendments in 1987.

The Clean Water Act has as its objective the restoration and maintenance of the "chemical, physical, and biological integrity of the Nation's waters." Two goals also were established in the 1972 legislation: zero discharge of pollutants by 1985 and, as an interim goal and where possible, water quality that is both "fishable" and swimmable" by mid-1983. While those dates have passed, the goals remain, and efforts to attain the goals continue.

Major parts of the Act are title II and title VI provisions which authorize Federal financial assistance for municipal sewage treatment plant construction and regulatory requirements, found throughout the Act, that apply to industrial and municipal dischargers.

The Act has been termed a technology-forcing statute because of the rigorous demands placed on those who are regulated by it to achieve higher and higher levels of pollution abatement. Industries were given until July 1, 1977, to install "best practicable control technology" (BPT) to clean up waste discharges.

The Clean Water Act required greater pollutant cleanup than BPT by no later than March 31, 1989, generally demanding that industry use the "best available technology" (BAT) that is economically achievable. In addition to the BPT and BAT national standards, States are required to implement control strategies for so-called "toxic hot spots" -- waters expected to remain polluted by toxic chemicals even after industrial dischargers have installed the best available cleanup technologies required under the law.

The Environmental Protection Agency (EPA) issues regulations containing the BPT and BAT effluent standards applicable to categories of industrial sources (such as iron and steel manufacturing, organic chemical manufacturing, petroleum refining, and others). Certain responsibilities are delegated to the States, and this Act, like other environmental laws, embodies a philosophy of Federal-State partnership in which the Federal government sets the agenda and standards for pollution abatement while States carry out day-to-day activities of implementation and enforcement.

In addition, States are responsible for establishing water quality standards, which consist of a designated use (recreation, water supply, industrial, or other), plus a numerical or narrative statement identifying the maximum concentrations of various pollutants which would not interfere with the designated use. These standards serve as the backup to federally set technology-based requirements, by indicating where additional pollution controls are needed to achieve the overall goals of the Act.

While the Act imposes great technological demands, it also recognizes the need for comprehensive research on water quality problems. This is provided throughout the statute, on topics including pollution in the Great Lakes and Chesapeake Bay, in-place toxic pollutants in harbors and navigable waterways, and water pollution resulting from mine drainage. The Act provides support to train personnel who operate and maintain wastewater treatment facilities.

## Safe Drinking Water Act Overview

The Safe Drinking Water Act (P.L. 93-523), enacted on December 16, 1974, and codified as 42 U.S.C. 300(f), is the basis for protecting public drinking water systems from harmful contaminants. The major part of this law is title XIV of the Public Health Service Act -- Safety of Public Water Systems. Basically, the Act directs the EPA Administrator to develop: (1) national primary drinking water regulations that incorporate maximum contaminant level goals and maximum contaminant levels or treatment techniques; (2) underground injection control regulations to protect underground sources of drinking water; and (3) groundwater protection grant programs for the administration of sole-source aquifer demonstration projects and for wellhead protection area programs. The Act permits these activities to be implemented by the States. The Act was last reauthorized in June 1986 (P.L. 99-339), and is authorized through FY91.

In promulgating national primary drinking water regulations (section 1412) EPA was directed to:

- \* Issue national interim primary drinking water regulations, which were designed to protect health to the extent feasible, taking technology, treatment techniques, and costs into consideration.

The interim regulations became effective within 18 months of their promulgation and established maximum contaminant levels (MCLs) for ten inorganic chemicals, three organic chemical groups (comprising six pesticides and trihalomethanes), three radionuclides, microbes, and turbidity.

- \* Contract with the National Academy of Sciences for a study to determine MCLs of pollutants that should be recommended for regulation.

Based on a report entitled "Drinking Water and Health," the Administrator was to propose and promulgate revised primary drinking water regulations for the 22 interim contaminants and any other contaminants that need to be regulated.

- \* Issue secondary drinking water regulations, which specify the maximum contaminant levels necessary to protect public welfare and deal primarily with contaminants affecting drinking water odor and appearance.

These "aesthetics" standards are not federally enforceable and are issued only as guidelines for the States. The Administrator is required to promulgate regulations for State underground injection control programs to protect underground sources of drinking water.

These regulations contain minimum requirements for the underground injection of wastes in five well classes to protect underground sources of drinking water and require that a State prohibit any underground injection that was authorized by State permit (section 1421).

The 1986 amendments to the Safe Drinking Water Act created two new sections that focus on groundwater protection grants. Section 1427 established procedures for demonstration programs to develop, implement, and assess critical aquifer protection areas already designated by the Administrator as sole-source aquifers.

- \* Awarded grants would pay for 50 percent of the costs of developing and implementing a protection program, and no grant may exceed \$4 million in any fiscal year.

The second grant program created under P.L. 99-339 established an elective program for protecting State wellhead areas around public water system wells.

- \* If a State chooses to establish a wellhead protection program, and EPA approves the State's program, then the Administrator awards grants between 50 and 90 percent for costs incurred in developing and implementing the program.
- \* A State choosing not to establish a wellhead protection program will only be "penalized" by not being eligible for a grant, and EPA has no authority to establish a wellhead program for a State.

The Safe Drinking Water Act has been amended four times since the original P.L. 93-523: (1) in November 1977 by P.L. 95-190; (2) in September 1979 by P.L. 96-63; (3) in December 1980 by P.L. 96-502; and (4) in June 1986 by P.L. 99-339. The 1986 amendments include provisions requiring EPA to (1) set drinking water regulations for 83 specified contaminants by June 1989, (2) promulgate requirements for disinfection and filtration of public water supplies and provide related technical assistance to small communities, (3) ban the use of lead pipes and lead solder in new drinking water distribution systems, (4) establish an elective wellhead protection program around public water supply wells, (5) establish an elective demonstration grant program for States and local authorities having designated sole-source aquifers to develop groundwater protection programs, and (6) issue rules for monitoring wells that inject wastes below a drinking water source. The amendments also increase EPA's enforcement authority. In addition, the 100th Congress enacted the Lead Contamination Control Act of 1988, (P.O. 100-572) which added a new part F to the SDWA. Part F is intended to reduce exposure to lead in drinking water, specifically by requiring the recall of lead-lined water coolers, and establishing an information and screening program for schools.

## How to Use This Catalog

### Ordering Publications from EPA

Many publications in this catalog are distributed compliments of the U.S. Environmental Protection Agency's Office of Science and Technology (OST). EPA distributes one free copy of each publication to each customer until supplies are depleted.

Publication titles are listed alphabetically under different subject categories. On the right-hand side of each title you will find listed:

EPA Number -----  
NTIS Number -----  
ERIC Number -----

These are the accession numbers by which a document is identified. The EPA number is a document's unique identifying number and should be used when ordering the document from the EPA.

When the EPA's supply of a publication is depleted, requestors are referred to either the National Technical Information Service (NTIS) or the Educational Resources Information Center (ERIC). These clearinghouses provide copies of OST publications for a fee. Both NTIS and ERIC assign unique identifying numbers to each document they distribute. Customers should use these numbers when ordering documents from either NTIS or ERIC.

To check on the current availability of any publication listed in this catalog write to:

U.S. Environmental Protection Agency  
Office of Water Resource Center  
RC-4100  
401 M St., SW  
Washington, DC 20460

Internet address: [Lynch.Maureen@EPAMail.EPA.gov](mailto:Lynch.Maureen@EPAMail.EPA.gov)

or call the Resource Center publications request line at (202) 260-7786. Your call will be returned within two working days. When receiving a document from the EPA, please allow 2-3 weeks for delivery.

Instructions for ordering documents from NTIS and ERIC are outlined in the following pages.



## Ordering Publications from NTIS

Customers may order documents from the National Technical Information Service in the following ways:

Telephone: (703) 487-4650  
TDD (703) 487-4639, 8:30 a.m. to 5:30 p.m. EST

FAX (703) 321-8547. For assistance call (703) 487-4679

Telex - 64617 (international only)

### Online Service Orders:

DIALOG: (800) 334-2564  
OCLC: (800) 848-5800; in Ohio: (800) 848-8286  
ORBIT: (800) 421-7229; in Virginia: (703) 442-0900  
STN: (800) 848-6533; in Ohio: (800) 848-6538

### Mail Orders - Send order form to:

National Technical Information Service  
U.S. Department of Commerce  
5285 Port Royal Road  
Springfield, VA 22161

QuikSERVICE - Know the cost in advance, availability restrictions, and the approximate time of shipment. The \$3.00 handling fee is waived. For information and an application, call (703) 487-4650 and ask for the free brochure PR-846.

Orders may be charged to an NTIS Deposit Account or the customer's American Express, VISA, or Mastercard. Checks or money orders are to be made payable to NTIS in U.S. dollars. Orders for foreign destinations are subject to foreign prices. If a purchase order is used, add \$7.50 to the total order (U.S., Canada, and Mexico only).

### Shipping and Handling

A \$3.00 handling fee per order applies to orders from the U.S., Canada, and Mexico. For other countries, the handling fee is \$4.00.

Orders are sent first class or equivalent in the United States. Orders to other countries are shipped surface mail. Air mail is \$3.50 per report to Canada and Mexico and \$7.50 per report to other countries.

RUSH ORDERS are guaranteed to be processed within 24 hours and sent by overnight courier. Add \$15.00 to the price of each title. Outside U.S., Canada, or Mexico, add \$25.00 per title.

To order computer products on a RUSH basis, please call (800) 553-NTIS for complete information.

Orders may be picked up at NTIS, 5285 Port Royal Road, Springfield, Virginia (U.S. 495, exit 5 west) between 8:30 a.m. and 5:30 p.m., Monday through Friday.

#### **Discounts and Credits**

A 25 percent discount is available for most documents if 5 to 100 copies of a single title are ordered at the same time and shipped to the same address. For discounts on more than 100 copies, call NTIS at (703) 487-4650.

Academic libraries can receive a 10 percent discount education credit on orders. Call NTIS at (703) 487-4660.

State and local governments and State universities can get immediate credit and shipment of orders with "special credit" accounts without being charged the standard \$7.50 fee. For more information, call NTIS at (703) 487-4064 and ask for the free brochure PR-220.

# NTIS Order Form

U.S. Department of Commerce  
National Technical Information Service  
Springfield, VA 22161

To order subscriptions, call (703) 487-4630.  
TDD (To place orders), call (703) 487-4639.



(703) 487-4650

or FAX this form (703) 321-8547

## For Rush Service—1-800-553-NTIS

Rush service is available for an additional fee by calling the number above. Rush orders are usually shipped next day by *overnight* courier in the U.S. or by Air Mail outside the U.S. Do not mail rush orders.

### Ship to address

DTIC Users Code \_\_\_\_\_  
Date \_\_\_\_\_ Contract No. \_\_\_\_\_  
Last six digits \_\_\_\_\_  
Company \_\_\_\_\_  
Last Name \_\_\_\_\_ First Initial \_\_\_\_\_  
Title \_\_\_\_\_  
Address \_\_\_\_\_  
City/State/ZIP \_\_\_\_\_  
Attention \_\_\_\_\_  
Telephone number \_\_\_\_\_ FAX number \_\_\_\_\_  
Signature: \_\_\_\_\_  
(Required to validate all orders)

### Payment

☐ Charge my NTIS Deposit Account \_\_\_\_\_  
Charge my ☐ ☐ ☐   
Account No. \_\_\_\_\_  
Exp. \_\_\_\_\_ Cardholder's name \_\_\_\_\_  
☐ Check/Money order enclosed for \$ \_\_\_\_\_  
(Payable in U.S. dollars)  
☐ Bill me \*—Add \$7.50. Purchase orders only accepted from Government agencies, educational institutions, or corporations. (Purchase order billing ONLY available to addresses in the U.S., Canada & Mexico)  
Purchase Order No. \_\_\_\_\_

For a copy of the latest NTIS price code conversion table, call (703) 487-4650 and ask for list PR-360-3

### Order Selection

Enter NTIS order numbers (Ordering by title alone will delay your order)	Customer Routing (up to 8 digits)	Unit Price	Quantity			Specify density for tape orders		Internat'l Air Mail (see reverse)	TOTAL PRICE
			Paper Copy	Micro- fiche††	Other	1800 bpi	6250 bpi		
1.									
2.									
3.									
4.									
5.									
6.									
7.									
8.									
9.									
10.									

\*NTIS will label each item with up to eight characters of your organization's routing code.

††Microfiche is available for most paper copy reports.

All prices are subject to change.

#### SUBTOTAL from other side

Handling Fee U.S., Canada & Mexico—\$3  
per order Other countries—\$4

\* Billing Fee, add \$7.50

#### GRAND TOTAL

PR-OFA 5/13/92

All previous versions of this order form are obsolete

☐ OVER—Order continued on reverse

Please PRINT or TYPE.

Please PRINT or TYPE.

## Order Selection (Cont.)

Please PRINT or TYPE.

Enter NTIS order numbers (Ordering by title alone will delay your order)	Customer Routing (up to 8 digits)	Unit Price	Quantity			Specify density for tape orders		Internat'l Air Mail (see below)	TOTAL PRICE
			Paper Copy	Micro- fiche	Other	1600 bpi	6250 bpi		
11.									
12.									
13.									
14.									
15.									
16.									
17.									
18.									
19.									
20.									
21.									
22.									
23.									
24.									
25.									
Subtotal									

ENTER on the other side. ➡

## FREE Catalogs & Information

Call (703) 487-4650 and ask for any of the following catalogs

- PR-827 - NTIS Products & Services Catalog
- PR-858 - Tour NTIS by Video Tape. *NTIS-The Competitive Edge*, is available. The 8-minute tape gives an overview of NTIS and its activities.
- PR-797 - NTIS Alerts current awareness bulletins
- PR-888 - CD-ROMs & optical discs available from NTIS
- PR-868 - Environmental Highlights of best selling reports
- PR-758 - Environmental software & datafiles
- PR-882 - Central & Eastern Europe Business Information Catalog
- PR-746 - Directory of Federal Laboratory Resources
- PR-821 - Health care financing Administration manuals
- PR-895 - Federal TQM Document Catalog & Database Users Guide

For an NTIS price code conversion table, call (703) 487-4650.

## International Air Mail

*Paper copy reports and microfiche copies are shipped surface mail unless Air Mail is requested.*

Canada and Mexico add \$4 per paper copy report;  
\$1 per microfiche copy.

Other countries add \$8 per paper copy report;  
\$1.25 per microfiche copy.

Computer products are shipped Air Mail at no extra cost.

### Return Policy

NTIS does not permit returns for credit or refund. NTIS will replace items if an error was made in filling your order, if the item is defective, or if it was received in damaged condition. Call (703) 487-4660.

After the original stock of a technical report is exhausted, NTIS reprints directly from the master archive copy. These printed-to-order copies are the best possible reproductions.

For more order forms, call (703) 487-4650 and ask for PR-OFA.

## **Ordering Publications from ERIC**

Requestors may order documents from the Educational Resources Information Center (ERIC) the following ways:

Telephone: (614) 292-6717

Fax - Send order form to: (614) 292-0263

Mail orders - Send order form to:

Educational Resources Information Center  
1929 Kenny Road  
Columbus, OH 43210-1015

## **Shipping and Handling**

Shipping fees range from \$2.00 to \$10.00. Please see the ERIC Order form on the following pages or call ERIC for details on shipping fees.

[illegible]

Order Subtotal	Shipping*
\$ 2.00-\$ 10.00	\$2.00
\$10.01-\$ 25.00	\$3.50
\$25.01-\$ 50.00	\$6.00
\$50.01-\$ 75.00	\$8.00
\$75.01-\$100.00	\$10.00
Over \$100.00	Add 10%

## **1. INDUSTRIAL EFFLUENT LIMITATIONS AND GUIDELINES**

Assessment of Environmental Fate and Effects of Discharges from Offshore Oil and Gas Operations	EPA#: 440/4-85-002 NTIS#: PB86-114964
The Benefits and Feasibility of Effluent Trading Between Point Sources: An Analysis in Support of Clean Water Act Reauthorization	EPA#: NTIS#: PB93-217628 ERIC#: 470d
Cost-Effectiveness Analysis of Effluent Limitations Guidelines and Standards for the Aluminum Forming Point Source Category	EPA#: NTIS#: PB93-156107
Cost-Effectiveness Analysis of Effluent Limitations Guidelines and Standards for the Battery Manufacturing Point Source Category	EPA#: NTIS#: PB92-231893
Cost-Effectiveness Analysis of Effluent Limitations Guidelines and Standards for the Offshore Oil and Gas Industry - Final	EPA#: 821/R-93-005 NTIS#: PB93-169118 ERIC#: 529d
Cost-Effectiveness Analysis of Effluent Limitations Guidelines and Standards for the Pesticide Manufacturing Industry Proposed	EPA#: 821/R-92-004 NTIS#: PB92-173525 ERIC#: 683d
Development Document for Best Conventional Pollutant Control Technology Effluent Limitations Guidelines for the Pulp, Paper, and Paperboard and the Builders' Paper and Board Mills Point Source Category	EPA#: 440/1-86-025 NTIS#: PB87-172250 ERIC#: 673d



Development Document for Best Conventional Technology Effluent Limitations Guidelines for the Pharmaceutical Manufacturing Point Source Category	EPA#:	440/1-86-084
	NTIS#:	PB87-172268

Development Document for Best Technology Available for the Location, Design, Construction, and Capacity of Cooling Water Intake Structures for Minimizing Adverse Environmental Impact	EPA#:	440/1-76-015a
	NTIS#:	PB-253573

Development Document for Effluent Limitations Guidelines and New Source Performance Standards for the Animal Feed, Breakfast Cereal, and Wheat Starch Segments of the Grain Mills Point Source Category	EPA#:	440/1-74-039a
	NTIS#:	PB-240861

Development Document for Effluent Limitations Guidelines and New Source Performance Standards for the Apple, Citrus, and Potato Processing Segments of the Canned and Preserved Fruits and Vegetables Point Source Category	EPA#:	440/1-74-027a
	NTIS#:	PB-238649

Development Document for Effluent Limitations Guidelines and New Source Performance Standards for the Basic Fertilizer Chemicals Segment of the Fertilizer Manufacturing Point Source Category	EPA#:	440/1-74-011a
	NTIS#:	PB-238652

Development Document for Effluent Limitations Guidelines and New Source Performance Standards for the Beet Sugar Processing Subcategory of the Sugar Processing Point Source Category	EPA#:	440/1-74-002b
	NTIS#:	PB-238462

Development Document for Effluent Limitations  
Guidelines and New Source Performance Standards  
for the Bleached Kraft, Groundwood, Sulfite, Soda,  
Deink, and Non-Integrated Paper Mills Segments of  
the Pulp, Paper, and Paperboard Point Source  
Category Vol. I Group 1, Phase 2 - Proposed

EPA#: 440/1-76-047a  
NTIS#: PB92-231869

Development Document for Effluent Limitations  
Guidelines and New Source Performance Standards  
for the Bleached Kraft, Groundwood, Sulfite, Soda,  
Deink, and Non-Integrated Paper Mills Segments of  
the Pulp, Paper, and Paperboard Point Source  
Category - Vol. II - Sections 8-15 - Proposed

EPA#: 440/1-76-047b  
NTIS#: PB92-231562

Development Document for Effluent Limitations  
Guidelines and New Source Performance Standards  
for the Builders' Paper and Roofing Felt Segments  
of the Builders' Paper and Board Mills Point Source  
Category

EPA#: 440/1-74-026a  
NTIS#: PB-238076

Development Document for Effluent Limitations  
Guidelines and New Source Performance Standards  
for the Building, Construction, and Paper Segments  
of the Asbestos Manufacturing Point Source  
Category

EPA#: 440/1-74-017a  
NTIS#: PB-238320

Development Document for Effluent Limitations  
Guidelines and New Source Performance Standards  
for the Calcium Carbide Segment of the Ferroalloy  
Manufacturing Point Source Category Group 1,  
Phase 2 Interim Final

EPA#: 440/1-75-038  
NTIS#: PB92-231919

Development Document for Effluent Limitations Guidelines and New Source Performance Standards for the Cane Sugar Refining Segment of the Sugar Processing Point Source Category	EPA#:	440/1-74-002c
	NTIS#:	PB-238147
Development Document for Effluent Limitations Guidelines and New Source Performance Standards for the Catfish, Crab, Shrimp, and Tuna Segments of the Canned and Preserved Seafood Processing Industry Point Source Category	EPA#:	440/1-74-020a
	NTIS#:	PB-238614
Development Document for Effluent Limitations Guidelines and New Source Performance Standards for the Cement Manufacturing Point Source Category	EPA#:	440/1-74-005a
	NTIS#:	PB-238610
Development Document for Effluent Limitations Guidelines and New Source Performance Standards for the Concrete Products Point Source Category	EPA#:	440/1-78-090
	NTIS#:	PB92-231943
Development Document for Effluent Limitations Guidelines and New Source Performance Standards for the Copper, Nickel, Chromium, and Zinc Segments of the Electroplating Point Source Category	EPA#:	440/1-74-003a
	NTIS#:	PB-238834
Development Document for Effluent Limitations Guidelines and New Source Performance Standards for the Dairy Product Processing Point Source Category	EPA#:	440/1-74-021a
	NTIS#:	PB-238835

Development Document for Effluent Limitations Guidelines and New Source Performance Standards for the Explosives Manufacturing Point Source Category - Group 2 - Interim Final	EPA#:	440/1-76-060j
	NTIS#:	PB92-231950

Development Document for Effluent Limitations Guidelines and New Source Performance Standards for the Fabricated and Reclaimed Rubber Segments of the Rubber Processing Point Source Category - Proposed	EPA#:	440/1-74-030
	NTIS#:	PB89-238141

Development Document for Effluent Limitations Guidelines and New Source Performance Standards for the Fabricated and Reclaimed Rubber Segments of the Rubber Processing Point Source Category	EPA#:	440/1-74-030a
	NTIS#:	PB-241916

Development Document for Effluent Limitations Guidelines and New Source Performance Standards for the Feedlots Point Source Category	EPA#:	440/1-74-004a
	NTIS#:	PB-238651

Development Document for Effluent Limitations Guidelines and New Source Performance Standards for the Fish Meal, Salmon, Bottom Fish, Clam, Oyster, Sardine, Scallop, Herring, & Abalone Segments of the Canned and Preserved Fish and Seafood Processing Industry Point Source Category	EPA#:	440/1-75-041a
	NTIS#:	PB-256840

Development Document for Effluent Limitations Guidelines and New Source Performance Standards for the Flat Glass Segment of the Glass Manufacturing Point Source Category	EPA#:	440/1-74-001c
	NTIS#:	PB-238907

Development Document for Effluent Limitations  
Guidelines and New Source Performance Standards  
for the Formulated Fertilizer Segment of the  
Fertilizer Manufacturing Point Source Category

EPA#: 440/1-75-042a  
NTIS#: PB-240863

Development Document for Effluent Limitations  
Guidelines and New Source Performance Standards  
for the Fruits, Vegetables, and Specialties Segments  
of the Canned and Preserved Fruits and Vegetables  
Point Source Category Interim Final

EPA#: 440/1-75-046  
NTIS#: PB92-232065

Development Document for Effluent Limitations  
Guidelines and New Source Performance Standards  
for the Gold Placer Mine Subcategory of the Ore  
Mining and Dressing Point Source Category Final

EPA#: 440/1-88-061  
NTIS#: PB89-117790

Development Document for Effluent Limitations  
Guidelines and New Source Performance Standards  
for the Grain Processing Segment of the Grain Mills  
Point Source Category

EPA#: 440/1-74-028a  
NTIS#: PB-238316

Development Document for Effluent Limitations  
Guidelines and New Source Performance Standards  
for the Hospitals Point Source Category Interim  
Final

EPA#: 440/1-76-060n  
NTIS#: PB87-192670

Development Document for Effluent Limitations  
Guidelines and New Source Performance Standards  
for the Insulation Fiberglass Manufacturing Segment  
of the Glass Manufacturing Point Source Category

EPA#: 440/1-74-001b  
NTIS#: PB-238078

Development Document for Effluent Limitations  
Guidelines and New Source Performance Standards  
for the Major Inorganic Products Segment of the  
Inorganic Chemicals Manufacturing Point Source  
Category

EPA#: 440/1-74-007a  
NTIS#: PB-238611

Development Document for Effluent Limitations  
Guidelines and New Source Performance Standards  
for the Major Organic Products Segment of the  
Organic Chemicals Manufacturing Point Source  
Category

EPA#: 440/1-74-009a  
NTIS#: PB-241905

Development Document for Effluent Limitations  
Guidelines and New Source Performance Standards  
for the Mineral Mining and Processing Industry -  
Interim Final

EPA#: 440/1-76-059a

Development Document for Effluent Limitations  
Guidelines and New Source Performance Standards  
for the Mineral Mining and Processing Point Source  
Category

EPA#: 440/1-76-059b  
NTIS#: PB80-110299

Development Document for Effluent Limitations  
Guidelines and New Source Performance Standards  
for the Minerals for the Construction Industry - Vol.  
I Mineral Mining and Processing

EPA#: 440/1-75-059  
NTIS#: PB-274593

Development Document for Effluent Limitations  
Guidelines and New Source Performance Standards  
for the Offshore Subcategory of the Oil and Gas  
Extraction Point Source Category - Proposed

EPA#: 440/1-85-055  
NTIS#: PB86-114949

Development Document for Effluent Limitations Guidelines and New Source Performance Standards for the Offshore Subcategory of the Oil and Gas Extraction Point Source Category - Final	EPA#: 821/R-93-003 NTIS#: PB93-167310 ERIC#: 468d
Development Document for Effluent Limitations Guidelines and New Source Performance Standards for the Ore Mining and Dressing Point Source Category - Vol. I	EPA#: 440/1-78-061d NTIS#: PB-286520
Development Document for Effluent Limitations Guidelines and New Source Performance Standards for the Ore Mining and Dressing Point Source Category - Vol. II	EPA#: 440/1-78-061e NTIS#: PB-286521
Development Document for Effluent Limitations Guidelines and New Source Performance Standards for the Ore Mining and Dressing Point Source Category - Proposed	EPA#: 440/1-82-061b NTIS#: PB82-250952
Development Document for Effluent Limitations Guidelines and New Source Performance Standards for the Ore Mining and Dressing Point Source Category - Final	EPA#: 440/1-82-061 NTIS#: PB91-234427 ERIC#: 667d
Development Document for Effluent Limitations Guidelines and New Source Performance Standards for the Organic Chemicals, Plastics, and Synthetic Fibers Industry Point Source Category - Vol. I - BPT (Best Practicable Technology) Proposed	EPA#: 440/1-83-009b1 NTIS#: PB83-205633



Development Document for Effluent Limitations  
Guidelines and New Source Performance Standards  
for the Organic Chemicals, Plastics, and Synthetic  
Fibers Industry Point Source Category Vol. II -  
BAT (Best Available Technology) Proposed

EPA#: 440/1-83-009b2  
NTIS#: PB83-205641

Development Document for Effluent Limitations  
Guidelines and New Source Performance Standards  
for the Organic Chemicals, Plastics, and Synthetic  
Fibers Industry Point Source Category Vol. III  
BAT (Best Available Technology) Proposed

EPA#: 440/1-83-009b3  
NTIS#: PB83-205658

Development Document for Effluent Limitations  
Guidelines and New Source Performance Standards  
for the Organic Chemicals, Plastics, and Synthetic  
Fibers Point Source Category Vol. I

EPA#: 440/1-87-009a  
NTIS#: PB88-171335

Development Document for Effluent Limitations  
Guidelines and New Source Performance Standards  
for the Organic Chemicals, Plastics, and Synthetic  
Fibers Point Source Category Vol. II

EPA#: 440/1-87-009b

Development Document for Effluent Limitations  
Guidelines and New Source Performance Standards  
for the Other Non-Fertilizer Phosphate Chemicals  
Segment of the Phosphate Manufacturing Point  
Source Category

EPA#: 440/1-75-043a  
NTIS#: PB92-231992

Development Document for Effluent Limitations  
Guidelines and New Source Performance Standards  
for the Phosphorus Derived Chemicals Segment of  
the Phosphate Manufacturing Point Source Category

EPA#: 440/1-74-006a  
NTIS#: PB-241018

Development Document for Effluent Limitations  
Guidelines and New Source Performance Standards  
for the Pressed and Blown Glass Segments of the  
Glass Manufacturing Point Source Category

EPA#: 440/1-75-034a  
NTIS#: PB-256854

Development Document for Effluent Limitations  
Guidelines and New Source Performance Standards  
for the Pulp, Paper, and Paperboard and the  
Builders' Paper and Board Mills Point Source  
Category

EPA#: 440/1-80-025b  
NTIS#: PB81-201535

Development Document for Effluent Limitations  
Guidelines and New Source Performance Standards  
for the Pulp, Paper, and Paperboard and the  
Builders' Paper and Board Mills Point Source  
Category

EPA#: 440/1-82-025  
NTIS#: PB83-163949

Development Document for Effluent Limitations  
Guidelines and New Source Performance Standards  
for the Raw Cane Sugar Processing Segment of the  
Sugar Processing Point Source Category - Group 1,  
Phase 2 - Interim Final

EPA#: 440/1-75-044  
NTIS#: PB92-231968

Development Document for Effluent Limitations  
Guidelines and New Source Performance Standards  
for the Red Meat Processing Segment of the Meat  
Products and Rendering Processing Point Source  
Category

EPA#: 440/1-74-012a  
NTIS#: PB-238836

Development Document for Effluent Limitations  
Guidelines and New Source Performance Standards  
for the Renderer Segment of the Meat Products and  
Rendering Processing Point Source Category

EPA#: 440/1-74-031d  
NTIS#: PB-253572

Development Document for Effluent Limitations Guidelines and New Source Performance Standards for the Smelting and Slag Processing Segments of the Ferroalloy Manufacturing Point Source Category	EPA#:	440/1-74-008a
	NTIS#:	PB-238650
Development Document for Effluent Limitations Guidelines and New Source Performance Standards for the Soap and Detergent Manufacturing Point Source Category	EPA#:	440/1-74-018a
	NTIS#:	PB-238613
Development Document for Effluent Limitations Guidelines and New Source Performance Standards for the Synthetic Polymer Segment of the Plastics and Synthetic Materials Manufacturing Point Source Category	EPA#:	440/1-75-036b
	NTIS#:	PB-240862
Development Document for Effluent Limitations Guidelines and New Source Performance Standards for the Synthetic Resins Segment of the Plastics and Synthetic Materials Manufacturing Point Source Category	EPA#:	440/1-74-010a
	NTIS#:	PB-239241
Development Document for Effluent Limitations Guidelines and New Source Performance Standards for the Textile, Friction Materials, and Sealing Devices Segments of the Asbestos Manufacturing Point Source Category	EPA#:	440/1-74-035a
	NTIS#:	PB-240860
Development Document for Effluent Limitations Guidelines and New Source Performance Standards for the Textile Mills Point Source Category	EPA#:	440/1-74-022a
	NTIS#:	PB-238832

Development Document for Effluent Limitations Guidelines and New Source Performance Standards for the Textile Mills Point Source Category	EPA#: 440/1-82-022 NTIS#: PB83-116871
Development Document for Effluent Limitations Guidelines and New Source Performance Standards for the Tire and Synthetic Segments of the Rubber Processing Point Source Category	EPA#: 440/1-74-013a NTIS#: PB-238609
Development Document for Effluent Limitations Guidelines and New Source Performance Standards for the Unbleached Kraft and Semichemical Pulp Segments of the Pulp, Paper and Paperboard Mills Point Source Category	EPA#: 440/1-74-025a NTIS#: PB-238833
Development Document for Effluent Limitations Guidelines and Standards for Control of Polychlorinated Biphenyls in the Deink Subcategory of the Pulp, Paper, and Paperboard Point Source Category - Proposed	EPA#: NTIS#: PB92-231984
Development Document for Effluent Limitations Guidelines and Standards for the Aluminum Forming Point Source Category	EPA#: 440/1-80-073a NTIS#: ERIC#: 662d
Development Document for Effluent Limitations Guidelines and Standards for the Aluminum Forming Point Source Category Vol. I	EPA#: 440/1-84-073v1 NTIS#: PB84-244425
Development Document for Effluent Limitations Guidelines and Standards for the Aluminum Forming Point Source Category - Vol. II	EPA#: 440/1-84-073v2 NTIS#: PB84-244433

Development Document for Effluent Limitations Guidelines and Standards for the Auto and Other Laundries Point Source Category	EPA#: NTIS#: ERIC#: 655d
Development Document for Effluent Limitations Guidelines and Standards for the Battery Manufacturing Point Source Category	EPA#: 440/1-82-067b NTIS#: PB83-197921
Development Document for Effluent Limitations Guidelines and Standards for the Battery Manufacturing Point Source Category - Vol. I: Cadmium, Calcium, Leclanche, Lithium, Magnesium, and Zinc Subcategories	EPA#: 440/1-84-067a NTIS#: PB85-121507
Development Document for Effluent Limitations Guidelines and Standards for the Battery Manufacturing Point Source Category - Vol. II: Lead Subcategory	EPA#: 440/1-84-067b NTIS#: PB85-121515
Development Document for Effluent Limitations Guidelines and Standards for the Bauxite Refining Subcategory of the Aluminum Segment of the Nonferrous Metals Manufacturing Point Source Category	EPA#: 440/1-74-019c NTIS#: PB-238463
Development Document for Effluent Limitations Guidelines and Standards for the Canmaking Subcategory of the Coil Coating Point Source Category	EPA#: 440/1-83-071 NTIS#: PB84-198647
Development Document for Effluent Limitations Guidelines and Standards for the Canmaking Subcategory of the Coil Coating Point Source Category	EPA#: 440/1-83-071b NTIS#: PB83-198598

Development Document for Effluent Limitations Guidelines and Standards for the Coil Coating Point Source Category - Phase I	EPA#: 440/1-82-071 NTIS#: PB83-205542 ERIC#: 668d
Development Document for Effluent Limitations Guidelines and Standards for the Copper Forming Point Source Category - Proposed	EPA#: 440/1-82-074b
Development Document for Effluent Limitations Guidelines and Standards for the Copper Forming Point Source Category	EPA#: 440/1-84-074 NTIS#: PB84-192459
Development Document for Effluent Limitations Guidelines and Standards for the Electrical and Electronic Components Point Source Category	EPA#: 440/1-80-075a NTIS#: 663d
Development Document for Effluent Limitations Guidelines and Standards for the Electrical and Electronic Components Point Source Category	EPA#: 440/1-82-075b NTIS#: PB82-249673
Development Document for Effluent Limitations Guidelines and Standards for the Electrical and Electronic Components Point Source Category - Phase I	EPA#: 440/1-83-075
Development Document for Effluent Limitations Guidelines and Standards for the Electrical and Electronic Components Point Source Category - Phase II	EPA#: 440/1-83-075b NTIS#: PB83-199208

Development Document for Effluent Limitations Guidelines and Standards for the Electrical and Electronic Components Point Source Category - Phase II	EPA#: 440/1-84-075 NTIS#: PB92-232016
Development Document for Effluent Limitations Guidelines and Standards for the Gum and Wood Chemicals Manufacturing Point Source Category	EPA#: 440/1-79-078b NTIS#: PB92-232040
Development Document for Effluent Limitations Guidelines and Standards for the Leather Tanning and Finishing Point Source Category	EPA#: 440/1-82-016 NTIS#: PB83-172593
Development Document for Effluent Limitations Guidelines and Standards for the Metal Finishing Point Category - Proposed	EPA#: 440/1-82-091b NTIS#: PB83-102004
Development Document for Effluent Limitations Guidelines and Standards for the Metal Finishing Point Source Category	EPA#: 440/1-83-091 NTIS#: PB84-115989
Development Document for Effluent Limitations Guidelines, New Source Performance Standards, and Pretreatment Standards for the Metal Molding and Casting (Foundries) Point Source Category - Vol. I	EPA#: 440/1-82-070b1
Development Document for Effluent Limitations Guidelines, New Source Performance Standards, and Pretreatment Standards for the Metal Molding and Casting (Foundries) Point Source Category - Vol. II	EPA#: 440/1-82-070b2



Development Document for Effluent Limitations Guidelines and Standards for the Metal Molding and Casting (Foundries) Point Source Category	EPA#: 440/1-85-070 NTIS#: PB86-161452 ERIC#: 670d
Development Document for Effluent Limitations Guidelines and Standards for the Nonferrous Metals Forming and Metal Powders Point Source Category - Vol. I	EPA#: 440/1-86-019v1 NTIS#: PB87-121760 ERIC#: 671d
Development Document for Effluent Limitations Guidelines and Standards for the Nonferrous Metals Forming and Metal Powders Point Source Category Vol. II	EPA#: 440/1-86-019v2 NTIS#: PB87-121778 ERIC#: 675d
Development Document for Effluent Limitations Guidelines and Standards for the Nonferrous Metals Forming and Metal Powders Point Source Category - Vol. III	EPA#: 440/1-86-019v3 NTIS#: PB87-121786 ERIC#: 672d
Development Document for Effluent Limitations Guidelines and Standards for the Nonferrous Metals Manufacturing Point Source Category - Vol. I - General Development Document	EPA#: 440/1-83-019b1 NTIS#: PB83-228296
Development Document for Effluent Limitations Guidelines and Standards for the Nonferrous Metals Manufacturing Point Source Category - Vol. II - Supplemental Development Documents for: Primary Aluminum, Primary Smelting and Electrolytic Refining, Primary Lead, Primary Zinc, Metallurgical Acid Plants	EPA#: 440/1-83-019b2 NTIS#: PB83-228304

Development Document for Effluent Limitations Guidelines and Standards for the Nonferrous Metals Manufacturing Point Source Category - Vol. III - Supplemental Development Documents for: Primary Tungsten, Primary Columbium-Tantalum, Secondary Silver, Secondary Lead, Secondary Aluminum, Secondary Copper	EPA#:	440/1-83-019b3
	NTIS#:	PB83-228312

Development Document for Effluent Limitations Guidelines and Standards for the Nonferrous Metals Manufacturing Point Source Category - Vol. I - General	EPA#:	440/1-89-019.1
	NTIS#:	PB90-181967

Development Document for Effluent Limitations Guidelines and Standards for the Nonferrous Metals Manufacturing Point Source Category - Vol. II Bauxite Refining, Primary Aluminum Smelting, Secondary Aluminum Smelting	EPA#:	440/1-89-019.2
	NTIS#:	PB90-181975

Development Document for Effluent Limitations Guidelines and Standards for the Nonferrous Metals Manufacturing Point Source Category Vol. III - Primary Copper Smelting, Primary Electrolytic Copper Refining, Secondary Copper, Metallurgical Acid Plants	EPA#:	440/1-89-019.3
	NTIS#:	PB90-181983

Development Document for Effluent Limitations Guidelines and Standards for the Nonferrous Metals Manufacturing Point Source Category - Vol. IV - Primary Zinc, Primary Lead, Secondary Lead, Primary Antimony	EPA#:	440/1-89-019.4
	NTIS#:	PB90-181991

Development Document for Effluent Limitations  
Guidelines and Standards for the Nonferrous Metals  
Manufacturing Point Source Category - Vol. V -  
Primary Precious Metals and Mercury, Secondary  
Precious Metals, Secondary Silver, Secondary  
Mercury

EPA#: 440/1-89-019.5  
NTIS#: PB90-182007

Development Document for Effluent Limitations  
Guidelines and Standards for the Nonferrous Metals  
Manufacturing Point Source Category Vol. VI -  
Primary Tungsten, Secondary Tungsten and Cobalt,  
Primary Molybdenum and Rhenium, Secondary  
Molybdenum and Vanadium

EPA#: 440/1-89-019.6  
NTIS#: PB90-182015

Development Document for Effluent Limitations  
Guidelines and Standards for the Nonferrous Metals  
Manufacturing Point Source Category Vol. VII -  
Primary Beryllium, Primary Nickel and Cobalt,  
Secondary Nickel, Secondary Tin

EPA#: 440/1-89-019.7  
NTIS#: PB90-182023

Development Document for Effluent Limitations  
Guidelines and Standards for the Nonferrous Metals  
Manufacturing Point Source Category - Vol. VIII -  
Primary Columbium-Tantalum, Secondary Tantalum,  
Secondary Uranium

EPA#: 440/1-89-019.8  
NTIS#: PB90-182031

Development Document for Effluent Limitations  
Guidelines and Standards for the Nonferrous Metals  
Manufacturing Point Source Category - Vol. IX -  
Primary and Secondary Titanium, Primary  
Zirconium and Hafnium

EPA#: 440/1-89-019.9  
NTIS#: PB90-182049

Development Document for Effluent Limitations Guidelines and Standards for the Nonferrous Metals Manufacturing Point Source Category Vol. X - Primary and Secondary Germanium and Gallium, Primary Rare Earth Metals, Secondary Indium, Index	EPA#: 440/1-89-019.10 NTIS#: PB90-182056
Development Document for Effluent Limitations Guidelines and Standards for the Pesticide Chemicals Manufacturing Point Source Category	EPA#: 440/1-78-060e NTIS#: PB-285480
Development Document for Effluent Limitations Guidelines and Standards for the Pesticide Point Source Category	EPA#: 440/1-85-079 NTIS#: PB86-150042
Development Document for Effluent Limitations Guidelines and Standards for the Plastics Molding and Forming Point Source Category	EPA#: 440/1-84-069b NTIS#: PB84-171578
Development Document for Effluent Limitations Guidelines and Standards for the Plastics Molding and Forming Point Source Category - Final	EPA#: 440/1-84-069 NTIS#: PB85-186823
Development Document for Effluent Limitations Guidelines and Standards for the Porcelain Enameling Point Source Category - Proposed	EPA#: 440/1-81-072b NTIS#: PB81-201527
Development Document for Effluent Limitations Guidelines and Standards for the Porcelain Enameling Point Source Category - Final	EPA#: 440/1-82-072

Development Document for Effluent Limitations Guidelines and Standards for the Primary Aluminum Smelting Subcategory of the Aluminum Segment of the Nonferrous Metals Manufacturing Point Source Category	EPA#:	440/1-74-019d
	NTIS#:	PB-240859

Development Document for Effluent Limitations Guidelines and Standards for the Secondary Aluminum Smelting Subcategory of the Aluminum Segment of the Nonferrous Metals Manufacturing Point Source Category	EPA#:	440/1-74-019e
	NTIS#:	PB-238464

Development Document for Effluent Limitations Guidelines and Standards for the Shipbuilding and Repair Point Source Category - Proposed	EPA#:	440/1-79-076b
	NTIS#:	PB92-232032

Development Document for Effluent Limitations Guidelines, New Source Performance Standards, and Pretreatment Standards for the Coal Mining Point Source Category - Proposed	EPA#:	440/1-81-057b
	NTIS#:	PB81-229296

Development Document for Effluent Limitations Guidelines, New Source Performance Standards, and Pretreatment Standards for the Coal Mining Point Source Category Final	EPA#:	440/1-82-057
	NTIS#:	PB83-180422
	ERIC#:	666d

Development Document for Effluent Limitations Guidelines, New Source Performance Standards, and Pretreatment Standards for the Ink Formulating Point Source Category - Proposed	EPA#:	440/1-79-090b
	NTIS#:	PB81-178188

Development Document for Effluent Limitations Guidelines, New Source Performance Standards, and Pretreatment Standards for the Inorganic Chemicals Manufacturing Point Source Category - Proposed	EPA#:	440/1-80-007b
	NTIS#:	PB81-122632

Development Document for Effluent Limitations Guidelines, New Source Performance Standards, and Pretreatment Standards for the Inorganic Chemicals Manufacturing Point Source Category	EPA#:	440/1-82-007
	NTIS#:	PB82-265612

Development Document for Effluent Limitations Guidelines, New Source Performance Standards, and Pretreatment Standards for the Inorganic Chemicals Manufacturing Point Source Category - Phase 2	EPA#:	440/1-83-007b
	NTIS#:	
	ERIC#:	669d

Development Document for Effluent Limitations Guidelines, New Source Performance Standards, and Pretreatment Standards for the Inorganic Chemicals Manufacturing Point Source Category - Phase 2	EPA#:	440/1-84-007
	NTIS#:	PB85-156446

Development Document for Effluent Limitations Guidelines, New Source Performance Standards, and Pretreatment Standards for the Iron and Steel Manufacturing Point Source Category - Vol. I - General - Proposed	EPA#:	440/1-80-024b1
	NTIS#:	PB81-184392

Development Document for Effluent Limitations Guidelines, New Source Performance Standards, and Pretreatment Standards for the Iron and Steel Manufacturing Point Source Category - Vol. II Coke Making, Sintering, and Iron Making Subcategories - Proposed	EPA#:	440/1-80-024b2
	NTIS#:	PB81-184400

Development Document for Effluent Limitations Guidelines, New Source Performance Standards, and Pretreatment Standards for the Iron and Steel Manufacturing Point Source Category - Vol. III - Steel Making, Vacuum Degassing, and Continuous Casting Subcategories - Proposed	EPA#: 440/1-80-024b3 NTIS#: PB81-184418
---	--

Development Document for Effluent Limitations Guidelines, New Source Performance Standards, and Pretreatment Standards for the Iron and Steel Manufacturing Point Source Category Vol. IV - Hot Forming Subcategory Proposed	EPA#: 440/1-80-024b4 NTIS#: PB81-184426
--	--

Development Document for Effluent Limitations Guidelines, New Source Performance Standards, and Pretreatment Standards for the Iron and Steel Manufacturing Point Source Category Vol. V Scale Removal and Acid Pickling Subcategories - Proposed	EPA#: 440/1-80-024b5 NTIS#: PB81-184434
--	--

Development Document for Effluent Limitations Guidelines, New Source Performance Standards, and Pretreatment Standards for the Iron and Steel Manufacturing Point Source Category Vol. VI - Cold Forming, Alkaline Cleaning, and Hot Coating Subcategories Proposed	EPA#: 440/1-80-024b6 NTIS#: PB81-184442
--	--

Development Document for Effluent Limitations Guidelines, New Source Performance Standards, and Pretreatment Standards for the Iron and Steel Manufacturing Point Source Category - Vol. I General	EPA#: 440/1-82-024.1 NTIS#: PB82-240425
--	--

Development Document for Effluent Limitations Guidelines, New Source Performance Standards, and Pretreatment Standards for the Iron and Steel Manufacturing Point Source Category - Vol. II - Coke Making, Sintering, and Iron Making Subcategories	EPA#: 440/1-82-024.2 NTIS#: PB82-240433
--	--

Development Document for Effluent Limitations Guidelines, New Source Performance Standards, and Pretreatment Standards for the Iron and Steel Manufacturing Point Source Category - Vol. III - Steel Making, Vacuum Degassing, and Continuous Casting Subcategories	EPA#: 440/1-82-024.3 NTIS#: PB82-240441 ERIC#: 664d
--	---

Development Document for Effluent Limitations Guidelines, New Source Performance Standards, and Pretreatment Standards for the Iron and Steel Manufacturing Point Source Category - Vol. IV - Hot Forming Subcategory	EPA#: 440/1-82-024.4 NTIS#: PB82-240458 ERIC#: 665d
---	---

Development Document for Effluent Limitations Guidelines, New Source Performance Standards, and Pretreatment Standards for the Iron and Steel Manufacturing Point Source Category - Vol. V - Salt Bath Descaling, Acid Pickling Subcategories	EPA#: 440/1-82-024.5 NTIS#: PB82-240466
---	--

Development Document for Effluent Limitations Guidelines, New Source Performance Standards, and Pretreatment Standards for the Iron and Steel Point Source Category - Vol. VI - Cold Forming, Alkaline Cleaning, Hot Coating Subcategories	EPA#: 440/1-82-024.6 NTIS#: PB82-240474
--	--



Development Document for Effluent Limitations Guidelines, New Source Performance Standards, and Pretreatment Standards for the Paint Formulating Point Source Category	EPA#:	440/1-79-049b
Development Document for Effluent Limitations Guidelines, New Source Performance Standards, and Pretreatment Standards for the Petroleum Refining Point Source Category	EPA#:	440/1-74-014a
	NTIS#:	PB-238612
Development Document for Effluent Limitations Guidelines, New Source Performance Standards, and Pretreatment Standards for the Petroleum Refining Point Source Category - Proposed	EPA#:	440/1-79-014b
	NTIS#:	PB81-228413
Development Document for Effluent Limitations Guidelines, New Source Performance Standards, and Pretreatment Standards for the Petroleum Refining Point Source Category	EPA#:	440/1-82-014
	NTIS#:	PB83-172569
Development Document for Effluent Limitations Guidelines, New Source Performance Standards, and Pretreatment Standards for the Pharmaceutical Manufacturing Point Source Category - Proposed	EPA#:	440/1-82-084
Development Document for Effluent Limitations Guidelines, New Source Performance Standards, and Pretreatment Standards for the Pharmaceutical Manufacturing Point Source Category - Final	EPA#:	440/1-83-084
	NTIS#:	PB84-180066

Development Document for Effluent Limitations  
Guidelines, New Source Performance Standards, and  
Pretreatment Standards for the Plywood, Hardboard,  
and Wood Preserving Segments of the Timber  
Products Processing Point Source Category

EPA#: 440/1-74-023a  
NTIS#: PB-240811

Development Document for Effluent Limitations  
Guidelines, New Source Performance Standards, and  
Pretreatment Standards for the Steam Electric Point  
Source Category

EPA#: 440/1-74-029a  
NTIS#: PB-240853

Development Document for Effluent Limitations  
Guidelines, New Source Performance Standards, and  
Pretreatment Standards for the Steam Electric Point  
Source Category - Proposed

EPA#: 440/1-80-029b  
NTIS#: PB81-119075

Development Document for Effluent Limitations  
Guidelines, New Source Performance Standards, and  
Pretreatment Standards for the Steam Electric Point  
Source Category

EPA#: 440/1-82-029  
NTIS#: PB92-226422

Development Document for Effluent Limitations  
Guidelines, New Source Performance Standards, and  
Pretreatment Standards for the Steel Making  
Segment of the Iron and Steel Manufacturing Point  
Source Category

EPA#: 440/1-74-024a  
NTIS#: PB-238837

Development Document for Effluent Limitations  
Guidelines, New Source Performance Standards, and  
Pretreatment Standards for the Timber Products  
Processing Point Source Category

EPA#: 440/1-81-023  
NTIS#: PB81-227282

Development Document for Expanded Best Practicable Control Technology, Best Conventional Pollutant Control Technology, Best Available Technology, New Source Performance Technology, and Pretreatment Technology in the Pesticide Chemicals Industry	EPA#:	440/1-82-079b
	NTIS#:	PB83-153171
Economic Analysis of Effluent Guidelines for the Aluminum Segment of the Nonferrous Metals Industry	EPA#:	230/2-74-018
	NTIS#:	PB-239161
Economic Analysis of Effluent Guidelines for the Apple, Citrus, and Potato Processing Segments of the Canned and Preserved Fruits and Vegetables Industry	EPA#:	230/2-74-012
	NTIS#:	PB-240195
Economic Analysis of Effluent Guidelines for the Asbestos Industry	EPA#:	230/2-74-001
	NTIS#:	PB-238268
Economic Analysis of Effluent Guidelines for the Beet Sugar Processing Segment of the Sugar Processing Industry	EPA#:	230/2-75-002
	NTIS#:	PB-248844
Economic Analysis of Effluent Guidelines for the Cane Sugar Refining Segment of the Sugar Processing Industry	EPA#:	230/2-75-003
	NTIS#:	PB-248599
Economic Analysis of Effluent Guidelines for the Catfish, Crab, Shrimp, and Tuna Segments of the Seafood Processing Industry	EPA#:	230/2-74-025
	NTIS#:	PB-234214
Economic Analysis of Effluent Guidelines for the Cement Industry	EPA#:	230/2-74-004
	NTIS#:	PB-234442

Economic Analysis of Effluent Guidelines for the Copper, Nickel, Chromium, and Zinc Segments of the Electroplating Industry	EPA#:	230/2-74-007
	NTIS#:	PB-236595
Economic Analysis of Effluent Guidelines for the Ferroalloys Industry	EPA#:	230/2-74-009
	NTIS#:	PB-234045
Economic Analysis of Effluent Guidelines for the Fertilizer Industry	EPA#:	230/2-74-010
	NTIS#:	PB-241315
Economic Analysis of Effluent Guidelines for the Fish Meal, Salmon, Bottom Fish, Clams, Oysters, Sardines, Scallops, Herring, and Abalone Segments of the Seafood Processing Industry	EPA#:	230/2-74-047
	NTIS#:	PB-247307
Economic Analysis of Effluent Guidelines for the Flat Glass Segment of the Glass Manufacturing Industry	EPA#:	230/2-74-013
	NTIS#:	PB-234845
Economic Analysis of Effluent Guidelines for the Grain Processing Segment of the Grain Mills Industry	EPA#:	230/2-74-014
	NTIS#:	PB-240196
Economic Analysis of Effluent Guidelines for the Industrial Phosphate Industry	EPA#:	230/2-74-021
	NTIS#:	PB-238061
Economic Analysis of Effluent Guidelines for the Inorganic Chemicals Industry	EPA#:	230/2-74-015
	NTIS#:	PB-234457
Economic Analysis of Effluent Guidelines for the Insulation Fiberglass Segment of the Glass Manufacturing Industry	EPA#:	230/2-74-011
	NTIS#:	PB-240649

Economic Analysis of Effluent Guidelines for the Integrated Iron and Steel Industry - Proposed	EPA#:	230/1-76-048
	NTIS#:	PB-273215
Economic Analysis of Effluent Guidelines for the Large Scale Segment of the Feedlots Industry	EPA#:	230/2-76-008
	NTIS#:	PB-264002
Economic Analysis of Effluent Guidelines for the Leather Tanning and Finishing Industry	EPA#:	230/2-73-016
	NTIS#:	PB-238060
Economic Analysis of Effluent Guidelines for the Major Organic Products Segment of the Organic Chemicals Industry	EPA#:	230/2-75-019
	NTIS#:	PB-244816
Economic Analysis of Effluent Guidelines for the Meat Packing Industry	EPA#:	230/2-74-017
	NTIS#:	PB-235303
Economic Analysis of Effluent Guidelines for the Non-Fertilizer Phosphate Manufacturing Segment of the Phosphate Manufacturing Industry - Phase 2	EPA#:	230/2-76-043
	NTIS#:	PB-253483
Economic Analysis of Effluent Guidelines for the Petroleum Refining Industry	EPA#:	230/2-74-020
	NTIS#:	PB-239336
Economic Analysis of Effluent Guidelines for the Rubber Processing Industry	EPA#:	230/2-74-024
	NTIS#:	PB-235691
Economic Analysis of Effluent Guidelines for the Soap and Detergent Industry	EPA#:	230/2-73-026
	NTIS#:	PB-256313
Economic Analysis of Effluent Guidelines for the Steam Electric Industry	EPA#:	230/2-74-006
	NTIS#:	PB-239315

Economic Analysis of Effluent Guidelines for the Tars and Asphalt Segments of the Paving and Roofing Materials Industry	EPA#:	230/2-74-055
	NTIS#:	PB-246313
Economic Analysis of Effluent Guidelines for the Textile Mills Industry	EPA#:	230/2-75-028
	NTIS#:	PB-243906
Economic Analysis of Effluent Guidelines for the Textiles, Friction Materials, and Sealing Devices Segments of the Asbestos Manufacturing Industry	EPA#:	230/2-74-030
	NTIS#:	PB-250683
Economic Analysis of Effluent Limitations Guidelines and Standards for the Metal Finishing Industry - Proposed	EPA#:	440/2-82-004
	NTIS#:	PB89-238182
Economic Analysis of Effluent Limitations Guidelines and Standards for the Petroleum Refining Industry (Revised) - Proposed	EPA#:	440/2-79-027
	NTIS#:	PB89-238133
Economic Analysis of Effluent Limitations Guidelines and Standards for the Pharmaceutical Manufacturing Industry	EPA#:	440/2-83-013
	NTIS#:	PB84-140706
Economic Analysis of Effluent Limitations Guidelines, New Source Performance Standards, and Pretreatment Standards for the Iron and Steel Manufacturing Point Source Category	EPA#:	230/4-82-003
	NTIS#:	PB82-231291
Economic Assessment of the Benefits of Effluent Limitations Guidelines for Iron and Steel Manufacturers - Executive Summary, Vol. I, Vol. II, Vol. III	EPA#:	230/4-82-005
	NTIS#:	PB82-260670

Economic Benefits of Effluent Limitations Guidelines and Standards for the Offshore Oil and Gas Industry - Final	EPA#: 821/R-93-001 NTIS#: PB93-168797 ERIC#: 531d
Economic Impact Analysis of Alternative Pollution Control Technologies for the Wet Processing and Insulation Board Subcategories of the Timber Products Industry	EPA#: 440/2-80-089 NTIS#: PB81-214769
Economic Impact Analysis of Alternative Pollution Control Technologies for the Wood Preserving Subcategory of the Timber Products Industry	EPA#: 440/2-80-087 NTIS#: PB81-205825
Economic Impact Analysis of Effluent Guidelines for the Animal Feed, Breakfast Cereal, and Wheat Starch Segments of the Grain Mills Industry	EPA#: 230/2-75-038 NTIS#: PB-245082
Economic Impact Analysis of Effluent Limitations Guidelines and Standards for the Aluminum Forming Point Source Category	EPA#: 440/2-83-010 NTIS#: PB84-139757
Economic Impact Analysis of Effluent Limitations Guidelines and Standards for the Battery Manufacturing Industry	EPA#: 440/2-84-002 NTIS#: PB92-231901
Economic Impact Analysis of Effluent Limitations Guidelines and Standards for the Canmaking Subcategory of the Coil Coating Point Source Category	EPA#: 440/2-83-011 NTIS#: PB84-155357
Economic Impact Analysis of Effluent Limitations Guidelines and Standards for the Coal Mining Industry	EPA#: 440/2-82-006 NTIS#: PB83-159392

Economic Impact Analysis of Effluent Limitations Guidelines and Standards for the Copper Forming Industry	EPA#:	440/2-83-006
	NTIS#:	PB83-263780
Economic Impact Analysis of Effluent Limitations Guidelines and Standards for the Deink Subcategory of the Pulp, Paper, and Paperboard Industry - Proposed	EPA#:	440/2-82-014
	NTIS#:	PB89-238158
Economic Impact Analysis of Effluent Limitations Guidelines and Standards for the Electrical and Electronic Components Industry - Phase 1	EPA#:	440/2-83-005
	NTIS#:	PB83-226522
Economic Impact Analysis of Effluent Limitations Guidelines and Standards for the Electrical and Electronic Components Industry - Phase 2: Cathode Ray and Luminescent Coatings Subcategories Proposed	EPA#:	440/2-83-001
	NTIS#:	PB83-206011
Economic Impact Analysis of Effluent Limitations Guidelines and Standards for the Gold Placer Mining Segment of the Ore Mining and Dressing Industry	EPA#:	440/2-87-003
	NTIS#:	PB89-114292
Economic Impact Analysis of Effluent Limitations Guidelines and Standards for the Inorganic Chemicals Industry - Phase 2	EPA#:	440/2-84-013
	NTIS#:	PB85-102374
Economic Impact Analysis of Effluent Limitations Guidelines and Standards for the Leather Tanning Industry	EPA#:	440/2-82-018
	NTIS#:	PB83-159228



Economic Impact Analysis of Effluent Limitations Guidelines and Standards for the Metal Finishing Industry	EPA#:	440/2-83-007
	NTIS#:	PB83-245068

Economic Impact Analysis of Effluent Limitations Guidelines and Standards for the Metal Molding and Casting (Foundries) Industry	EPA#:	440/2-85-028
	NTIS#:	PB86-154135

Economic Impact Analysis of Effluent Limitations Guidelines and Standards for the Nonferrous Metals Manufacturing Industry Phase 1	EPA#:	440/2-84-004
	NTIS#:	PB84-177872

Economic Impact Analysis of Effluent Limitations Guidelines and Standards for the Organic Chemicals, Plastics, and Synthetic Fibers Industry	EPA#:	440/2-87-007
	NTIS#:	PB89-114300

Economic Impact Analysis of Effluent Limitations Guidelines and Standards for the Pesticide Chemicals Industry	EPA#:	440/2-85-027
	NTIS#:	PB86-161767

Economic Impact Analysis of Effluent Limitations Guidelines and Standards for the Pesticide Manufacturing Industry - Proposed	EPA#:	821/R-92-003
	NTIS#:	PB92-173533
	ERIC#:	682d

Economic Impact Analysis of Effluent Limitations Guidelines and Standards for the Petroleum Refining Industry	EPA#:	440/2-82-007
	NTIS#:	PB83-146902

Economic Impact Analysis of Effluent Limitations Guidelines and Standards for the Plastics Molding and Forming Industry	EPA#:	440/2-84-025
	NTIS#:	PB86-113529

Economic Impact Analysis of Effluent Limitations Guidelines and Standards for the Porcelain Enameling Industry	EPA#: 440/2-82-005 NTIS#: PB83-208405
Economic Impact Analysis of Effluent Limitations Guidelines and Standards for the Pulp, Paper, and Paperboard Mills Point Source Category - Vol. I: Economic Impact Analysis - Proposed	EPA#: 440/2-80-086.1 NTIS#: PB89-238166
Economic Impact Analysis of Effluent Limitations Guidelines and Standards for the Pulp, Paper, and Paperboard Mills Point Source Category - Vol. II: Detailed Description of Product Sectors Proposed	EPA#: 440/2-80-086.2 NTIS#: PB89-238174
Economic Impact Analysis of Effluent Limitations Guidelines and Standards for the Textile Mills Industry	EPA#: 440/2-82-001 NTIS#: PB83-139725
Economic Impact Analysis of Effluent Limitations Guidelines and Standards of Performance for the Offshore Oil and Gas Industry Final	EPA#: 821/R-93-004 NTIS#: PB93-173979 ERIC#: 530d
Economic Impact Analysis of Pollution Control Technologies for Segments of the Inorganic Chemicals Manufacturing Industry	EPA#: 440/2-81-023 NTIS#: PB83-106757
Guide for the Application of Effluent Limitations Guidelines for the Petroleum Refining Industry	EPA#: NTIS#: PB92-232057
Guidance Document for Effluent Discharges from the Auto and Other Laundries Point Source Category	EPA#: NTIS#: PB92-231927

Guidance Document for the Control of Water Pollution in the Photographic Processing Industry	EPA#:	440/1-81-082g
	NTIS#:	PB82-177643
Multimedia Technical Support Document for the Ethanol-for-Fuel Industry	EPA#:	440/1-86-093
	NTIS#:	PB86-177557
Oil and Gas Extraction Category; (Offshore) Subcategory Effluent Guidelines and New Source Performance Standards; Final Rule (Federal Register March 4, 1993)	EPA#:	
	NTIS#:	
	ERIC#:	645d
Preliminary Data Summary for the Coastal, Onshore, and Stripper Subcategories of the Oil and Gas Extraction Point Source Category	EPA#:	440/1-89-105
	NTIS#:	PB90-126434
Preliminary Data Summary for the Drum Reconditioning Industry	EPA#:	440/1-89-101
	NTIS#:	PB90-126491
Preliminary Data Summary for the Hazardous Waste Treatment Industry	EPA#:	440/1-89-100
	NTIS#:	PB90-126517
Preliminary Data Summary for the Hospitals Point Source Category	EPA#:	440/1-89-060n
	NTIS#:	PB90-126459
Preliminary Data Summary for the Industrial Laundries Point Source Category	EPA#:	440/1-89-103
	NTIS#:	PB90-126541
	ERIC#:	674d
Preliminary Data Summary for the Machinery Manufacturing and Rebuilding Industry	EPA#:	440/1-89-106
	NTIS#:	PB90-126525

Preliminary Data Summary for the Paint Formulating Point Source Category	EPA#: NTIS#:	440/1-89-050 PB90-126475
Preliminary Data Summary for the Pesticide Chemicals Point Source Category	EPA#: NTIS#:	440/1-89-060e PB90-126426
Preliminary Data Summary for the Pharmaceutical Manufacturing Point Source Category	EPA#: NTIS#:	440/1-89-084 PB90-126533
Preliminary Data Summary for the Solvent Recycling Industry	EPA#: NTIS#:	440/1-89-102 PB90-126467
Preliminary Data Summary for the Transportation Equipment Cleaning Industry	EPA#: NTIS#:	440/1-89-104 PB90-126483
Preliminary Data Summary for the Used Oil Reclamation and Re-Refining Industry	EPA#: NTIS#:	440/1-89-014 PB90-126509
Preliminary Data Summary for the Wood Preserving Segment of the Timber Products Processing Point Source Category	EPA#: NTIS#:	440/1-91-023 PB92-232156
Protecting Our Nation's Waters from Industrial Discharges - pamphlet	EPA#:	821/F-93-002
Re-Evaluation of the Economic Impact Analysis of Effluent Limitations Guidelines and Standards for the Organic Chemicals, Plastics, and Synthetic Fibers Industry	EPA#: NTIS#: ERIC#:	821/R-93-008 PB93-214328 684d

Re-Evaluation of the Economic Impact Analysis of Effluent Limitations Guidelines and Standards for the Organic Chemicals, Plastics, and Synthetic Fibers Industry Using Revised Compliance Costs	EPA#:	440/1-91-009b
	NTIS#:	
	ERIC#:	638d
Regulatory Impact Analysis of Effluent Limitations Guidelines and Standards for the Offshore Oil and Gas Industry - Final	EPA#:	821/R-93-002
	NTIS#:	PB93-174613
	ERIC#:	532d
Seafood Processing Study, Section 74: Report to Congress Vol. I	EPA#:	440/1-80-020a
	NTIS#:	PB81-182362
Seafood Processing Study, Section 74: Report to Congress - Vol. II	EPA#:	440/1-80-020b
	NTIS#:	PB81-182370
Seafood Processing Study, Section 74: Report to Congress Vol. III	EPA#:	440/1-80-020c
	NTIS#:	PB81-182388
Summary of Available Information on the Levels of Controls of Toxic Pollutants Discharges in the Printing and Publishing Point Source Category	EPA#:	440/1-83-400
	NTIS#:	PB92-231703
Supplement to the Development Document for Effluent Limitations Guidelines and New Source Performance Standards for the Organic Chemicals, Plastics, and Synthetic Fibers Point Source Category	EPA#:	440/1-91-009a
	NTIS#:	PB93-186096
	ERIC#:	637d
Supplement to the Development Document for Effluent Limitations Guidelines and New Source Performance Standards for the Organic Chemicals, Plastics, and Synthetic Fibers Point Source Category - Final	EPA#:	821/R-93-007
	NTIS#:	PB93-214336
	ERIC#:	681d

Supplement to the Development Document for  
Effluent Limitations Guidelines and New Source  
Performance Standards for the Renderer Segment of  
the Meat Products and Rendering Point Source  
Category (Reprint)

EPA#: 440/1-78-031e  
NTIS#: PB92-232008

Supplement to the Development Document for  
Effluent Limitations Guidelines and Standards for the  
Leather Tanning and Finishing Point Source  
Category

EPA#: 440/1-88-016s  
NTIS#: PB88-213541

Treatability Studies for the Inorganic Chemicals  
Manufacturing Point Source Category

EPA#: 440/1-80-103

## **2. PRETREATMENT AND MUNICIPAL WASTEWATER EFFLUENT LIMITATIONS AND GUIDELINES**

Aluminum, Copper, and Nonferrous Metals Forming and Metal Powders Pretreatment Standards: A Guidance Manual	EPA#: 800/B-89-001 NTIS#: PB91-145441 ERIC#: 119w
Development Document for Existing Source Pretreatment Standards for the Electroplating Point Source Category	EPA#: 440/1-79-003 NTIS#: PB80-196488
Economic Analysis of Existing Source Pretreatment Standards for the Electroplating Point Source Category	EPA#: 440/2-79-031 NTIS#: PB80-135262
Fate of Priority Pollutants in Publicly Owned Treatment Works Pilot Study	EPA#: 440/1-79-300
Fate of Priority Pollutants in Publicly Owned Treatment Works Vol. I	EPA#: 440/1-82-303 NTIS#: PB83-122788
Fate of Priority Pollutants in Publicly Owned Treatment Works Vol. II	EPA#: 440/1-82-303b NTIS#: PB83-122796
Guidance Manual for Battery Manufacturing Pretreatment Standards	EPA#: NTIS#: PB92-117951
Guidance Manual for Electroplating and Metal Finishing Pretreatment Standards	EPA#: 440/1-84-091g NTIS#: PB87-192597 ERIC#: 119w

Guidance Manual for Implementing Total Toxic Organics (TTO) Pretreatment Standards	EPA#:	440/1-85-009t
	NTIS#:	PB93-167005
	ERIC#:	339w
Guidance Manual for Iron and Steel Manufacturing Pretreatment Standards	EPA#:	
	NTIS#:	
	ERIC#:	103w
Guidance Manual for Leather Tanning and Finishing Pretreatment Standards	EPA#:	800/R-86-001
	NTIS#:	PB92-232024
	ERIC#:	117w
Guidance Manual for Pulp, Paper, and Paperboard and Builders' Paper and Board Mills Pretreatment Standards	EPA#:	
	NTIS#:	PB92-231638



### **3. WATER QUALITY STANDARDS**

Amendments to the Water Quality Standards Regulation that Pertains to Standards on Indian Reservations; Final Rule 40 CFR Part 131 Federal Register December 12, 1991	EPA#: NTIS#: ERIC#:	659d
Chronological Summary of Federal Water Quality Standards Promulgation Actions	EPA#:	
A Compilation of Water Quality Standards for Marine Waters	EPA# NTIS# ERIC:	440/5-82-019 PB92-231836 140d
Dam Water Quality Study	EPA#: NTIS#: ERIC#:	506/2-89-002 PB93-167013 449d
Guidance for State Implementation of Water Quality Standards for CWA Section 303 (c)(2)(B) - Final	EPA#: NTIS#: ERIC#:	PB92-231604 146d
Guidance on Water Quality Standards and 401 Certification Programs Administered by Indian Tribes	EPA#: NTIS#: ERIC#:	658d
Health Effects Criteria for Fresh Recreational Waters	EPA#: NTIS#: ERIC#:	600/1-84-004 PB85-150878 148d

Health Effects Criteria for Marine Recreational Waters	EPA#:	600/1-80-031
	NTIS#:	PB83-259994
	ERIC#:	149d
Introduction to Water Quality Standards	EPA#:	440/5-88-089
	NTIS#:	PB92-231646
	ERIC:	150d
Reference Guide to Water Quality Standards for Indian Tribes	EPA#:	440/5-90-002
	NTIS#:	PB92-231661
	ERIC:	152d
State Water Quality Standards Summaries (Compilation of 57)	EPA#:	440/5-88-031
	NTIS#:	PB89-141634
	ERIC:	143d
State Water Quality Standards Summary individual listings for:		
Alabama	EPA#:	440/5-88-033
	NTIS#:	PB89-141659
	ERIC:	474d
Alaska	EPA#:	440/5-88-032
	NTIS#:	PB89-141642
	ERIC:	475d
American Samoa	EPA#:	440/5-88-035
	NTIS#:	PB89-141675
	ERIC#:	476d
Arizona	EPA#:	440/5-88-036
	NTIS#:	PB89-141683
	ERIC#:	477d
Arkansas	EPA#:	440/5-88-034
	NTIS#:	PB89-141667
	ERIC#:	478d

California	EPA#:	440/5-88-037
	NTIS#:	PB89-141691
	ERIC:	479d
Colorado	EPA#:	440/5-88-038
	NTIS#:	PB89-141709
	ERIC:	480d
Connecticut	EPA#:	440/5-88-040
	NTIS#:	PB89-141725
	ERIC:	481d
Delaware	EPA#:	440/5-88-042
	NTIS#:	PB89-141741
	ERIC:	482d
District of Columbia	EPA#:	440/5-88-041
	NTIS#:	PB89-141733
	ERIC:	483d
Florida	EPA#:	440/5-88-043
	NTIS#:	PB89-141758
	ERIC:	484d
Georgia	EPA#:	440/5-88-044
	NTIS#:	PB89-141766
	ERIC:	485d
Guam	EPA#:	440/5-88-045
	NTIS#:	PB89-141774
	ERIC:	486d
Hawaii	EPA#:	440/5-88-046
	NTIS#:	PB89-141782
	ERIC:	652d
Idaho	EPA#:	440/5-88-048
	NTIS#:	PB89-141808
	ERIC:	487d
Illinois	EPA#:	440/5-88-049
	NTIS#:	PB89-141816
	ERIC:	488d

Indiana	EPA#:	440/5-88-050
	NTIS#:	PB89-141824
	ERIC:	489d
Iowa	EPA#:	440/5-88-047
	NTIS#:	PB89-141790
	ERIC:	490d
Kansas	EPA#:	440/5-88-051
	NTIS#:	PB89-141832
	ERIC:	491d
Kentucky	EPA#:	440/5-88-052
	NTIS#:	PB89-141840
	ERIC:	492d
Louisiana	EPA#:	440/5-88-053
	NTIS#:	PB89-141857
	ERIC:	493d
Maine	EPA#:	440/5-88-056
	NTIS#:	PB89-141881
	ERIC:	494d
Maryland	EPA#:	440/5-88-055
	NTIS#:	PB89-141873
	ERIC:	495d
Massachusetts	EPA#:	440/5-88-054
	NTIS#:	PB89-141865
	ERIC:	496d
Michigan	EPA#:	440/5-88-057
	NTIS#:	PB89-141899
	ERIC:	497d
Minnesota	EPA#:	440/5-88-058
	NTIS#:	PB89-141907
	ERIC:	498d
Mississippi	EPA#:	440/5-88-060
	NTIS#:	PB89-141923
	ERIC:	499d

Missouri	EPA#:	440/5-88-059
	NTIS#:	PB89-141915
	ERIC:	500d
Montana	EPA#:	440/5-88-061
	NTIS#:	PB89-141931
	ERIC:	501d
Nebraska	EPA#:	440/5-88-064
	NTIS#:	PB89-141964
	ERIC:	502d
Nevada	EPA#:	440/5-88-068
	NTIS#:	PB89-142004
	ERIC:	503d
New Hampshire	EPA#:	440/5-88-065
	NTIS#:	PB89-141972
	ERIC:	504d
New Jersey	EPA#:	440/5-88-066
	NTIS#:	PB89-141980
	ERIC:	505d
New Mexico	EPA#:	440/5-88-067
	NTIS#:	PB89-141998
	ERIC:	506d
New York	EPA#:	440/5-88-069
	NTIS#:	PB89-142012
	ERIC:	507d
North Carolina	EPA#:	440/5-88-062
	NTIS#:	PB89-141949
	ERIC:	469d
North Dakota	EPA#:	440/5-88-063
	NTIS#:	PB89-141956
	ERIC:	508d
North Mariana Islands	EPA#:	440/5-88-039
	NTIS#:	PB89-141717
	ERIC:	653d

Ohio	EPA#:	440/5-88-070
	NTIS#:	PB89-142020
	ERIC:	509d
Oklahoma	EPA#:	440/5-88-071
	NTIS#:	PB89-142038
	ERIC:	510d
Oregon	EPA#:	440/5-88-072
	NTIS#:	PB89-142046
	ERIC:	511d
Pennsylvania	EPA#:	440/5-88-073
	NTIS#:	PB89-142053
	ERIC:	512d
Puerto Rico	EPA#:	440/5-88-074
	NTIS#:	PB89-142061
	ERIC:	513d
Rhode Island	EPA#:	440/5-88-075
	NTIS#:	PB89-142079
	ERIC:	514d
South Carolina	EPA#:	440/5-88-076
	NTIS#:	PB89-142087
	ERIC:	515d
South Dakota	EPA#:	440/5-88-077
	NTIS#:	PB89-142095
	ERIC:	516d
Tennessee	EPA#:	440/5-88-078
	NTIS#:	PB89-142108
	ERIC:	517d
Texas	EPA#:	440/5-88-080
	NTIS#:	PB89-142129
	ERIC:	518d
Trust Territories	EPA#:	440/5-88-079
	NTIS#:	PB89-142111
	ERIC:	519d

Utah	EPA#:	440/5-88-081
	NTIS#:	PB89-142137
	ERIC:	520d
Vermont	EPA#:	440/5-88-084
	NTIS#:	PB89-142160
	ERIC:	521d
Virgin Islands	EPA#:	440/5-88-083
	NTIS#:	PB89-142152
	ERIC:	522d
Virginia	EPA#:	440/5-88-082
	NTIS#:	PB89-142145
	ERIC:	523d
Washington	EPA#:	440/5-88-085
	NTIS#:	PB89-142178
	ERIC:	524d
West Virginia	EPA#:	440/5-88-087
	NTIS#:	PB89-142194
	ERIC:	525d
Wisconsin	EPA#:	440/5-88-086
	NTIS#:	PB89-142186
	ERIC:	424d
Wyoming	EPA#:	440/5-88-088
	NTIS#:	PB89-142202
	ERIC:	425d
Status Report: State Compliance with CWA Section 303(c)(2)(B) as of February 4, 1990	EPA#:	440/5-90-013
	NTIS#:	PB92-231695
	ERIC:	147d
Technical Support Manual: Waterbody Surveys and Assessments for Conducting Use Attainability Analyses	EPA#:	440/4-86-037
	NTIS#:	PB92-231794
	ERIC:	142d

Technical Support Manual: Waterbody Surveys and Assessments for Conducting Use Attainability Analyses Vol. II: Estuarine Systems	EPA#: 440/4-86-038 NTIS#: PB92-231877 ERIC#: 189d
Technical Support Manual: Waterbody Surveys and Assessments for Conducting Use Attainability Analyses - Vol. III: Lake Systems	EPA#: 440/4-86-039 NTIS#: PB92-231802 ERIC#: 141d
Tracking Report: State Water Quality Criteria for Dioxin (2,3,7,8-TCDD)	EPA#: NTIS#: PB93-153948 ERIC#: 153d
Water Quality Criteria to Protect Wildlife Resources: Workshop Summary Report	EPA#: 600/3-89-067 NTIS#: PB89-220016
Water Quality Standards; Establishment of Numeric Criteria for Priority Toxic Pollutants; State's Compliance; Final Rule 40 CFR Part 131 Federal Register December 22, 1992  Corrections to the Final Rule (may be ordered separately) - Federal Register - June 1, 1993  - Federal Register - June 25, 1993  Federal Register July 6, 1993	EPA#: NTIS#: ERIC#: 340d
Water Quality Standards Criteria Summaries: A Compilation of State/Federal Criteria: Acidity-Alkalinity (Ph)	EPA: 440/5-88-020 NTIS: OPB89-141527 ERIC: 187d



Antidegradation	EPA:	440/5-88-028
	NTIS:	PB89-141600
	ERIC:	186d
Arsenic	EPA:	440/5-88-018
	NTIS:	PB89-141501
	ERIC:	185d
Bacteria	EPA:	440/5-88-007
	NTIS:	PB89-141394
	ERIC:	184d
Cadmium	EPA:	440/5-88-014
	NTIS:	PB89-141469
	ERIC:	183d
Chromium	EPA:	440/5-88-026
	NTIS:	PB89-141584
	ERIC:	182d
Copper	EPA:	440/5-88-027
	NTIS:	PB89-141592
	ERIC:	181d
Cyanide	EPA:	440/5-88-016
	NTIS:	PB89-141485
	ERIC:	180d
Definitions	EPA:	440/5-88-017
	NTIS:	PB89-141493
	ERIC:	179d
Designated Uses	EPA:	440/5-88-008
	NTIS:	PB89-141402
	ERIC:	178d
Dissolved Oxygen	EPA:	440/5-88-024
	NTIS:	PB89-141568
	ERIC:	177d
Dissolved Solids	EPA:	440/5-88-025
	NTIS:	PB89-141576
	ERIC:	176d

General Provisions	EPA:	440/5-88-010
	NTIS:	PB89-141428
	ERIC:	175d
Intermittent Streams	EPA:	440/5-88-009
	NTIS:	PB89-141410
	ERIC:	174d
Iron	EPA:	440/5-88-022
	NTIS:	PB89-141543
	ERIC:	173d
Lead	EPA:	440/5-88-030
	NTIS:	PB89-141626
	ERIC:	172d
Mercury	EPA:	440/5-88-005
	NTIS:	PB89-141378
	ERIC:	171d
Mixing Zones	EPA:	440/5-88-015
	NTIS:	PB89-141477
	ERIC:	170d
Nitrogen-Ammonia/Nitrate/Nitrite	EPA:	440/5-88-029
	NTIS:	PB89-141618
	ERIC:	169d
Organics	EPA:	440/4-88-006
	NTIS:	PB89-141386
	ERIC:	168d
Other Elements	EPA:	440/5-88-011
	NTIS:	PB89-141436
	ERIC:	167d
Pesticides	EPA:	440/5-88-021
	NTIS:	PB89-141535
	ERIC:	166d
Phosphorus	EPA:	440/5-88-012
	NTIS:	PB89-141444
	ERIC:	165d

Temperature	EPA:	440/5-88-023
	NTIS:	PB89-141550
	ERIC:	164d
Turbidity	EPA:	440/5-88-013
	NTIS:	PB89-141451
	ERIC:	163d
Zinc	EPA:	440/5-88-019
	NTIS:	PB89-141519
	ERIC:	162d
Set of 26	EPA:	
	NTIS:	
	ERIC:	188d
Water Quality Standards for the 21st Century: Proceedings of a Conference, 1989	EPA#:	440/5-89-004
	NTIS#:	PB92-231810
	ERIC#:	139d
Water Quality Standards for the 21st Century: Proceedings of a Conference, 1991	EPA#:	440/5-91-011
	NTIS#:	PB92-231828
	ERIC#:	333d
Water Quality Standards for the 21st Century: Proceedings of a Conference, 1992	EPA#:	823/R-92-009
	NTIS#:	PB93-144210
	ERIC:	351d
Water Quality Standards for Wetlands: National Guidance	EPA#:	440/S-90-011
	NTIS#:	PB92-231885
	ERIC#:	151d
Water Quality Standards Handbook	EPA#:	440/5-83-011
	NTIS#:	PB92-231851
	ERIC:	338d

Updates to the Handbook (May be ordered separately)

- Nonpoint Source Controls and Water Quality Standards

- Questions and Answers on Antidegradation

- Variances in Water Quality Standards

Water Quality Standards Regulation  
Federal Register - November 8, 1983

EPA#:

## **4. AMBIENT WATER QUALITY CRITERIA**

Ambient Aquatic Life Water Quality Criteria for Antimony (III) - draft	EPA#:	440/5-88-093
	NTIS#:	PB93-202778
	ERIC#:	611d
Ambient Aquatic Life Water Quality Criteria for Di-2-Ethylhexyl Phthalate - draft	EPA#:	440/5-87-013
	NTIS#:	PB93-202752
	ERIC#:	614d
Ambient Aquatic Life Water Quality Criteria for Hexachlorobenzene - draft	EPA#:	440/5-88-092
	NTIS#:	PB93-202760
	ERIC#:	613d
Ambient Aquatic Life Water Quality Criteria for Phenanthrene - draft	EPA#:	
	NTIS#:	PB93-167062
	ERIC#:	609d
Ambient Aquatic Life Water Quality Criteria for Silver - draft	EPA#:	440/5-87-011
	NTIS#:	PB93-202604
	ERIC#:	612d
Ambient Aquatic Life Water Quality Criteria for Tributyltin - draft	EPA#:	
	NTIS#:	PB93-167047
	ERIC#:	608d
Ambient Aquatic Life Water Quality Criteria for 2,4,5-Trichlorophenol draft	EPA#:	
	NTIS#:	PB93-167054
	ERIC#:	610d

Ambient Water Quality Criteria for Acenaphthene	EPA#:	440/5-80-015
	NTIS#:	PB81-117269
	ERIC#:	618d
Ambient Water Quality Criteria for Acrolein	EPA#:	440/5-80-016
	NTIS#:	PB81-117277
	ERIC#:	619d
Ambient Water Quality Criteria for Acrylonitrile	EPA#:	440/5-80-017
	NTIS#:	PB81-117285
	ERIC#:	620d
Ambient Water Quality Criteria for Aldrin/Dieldrin	EPA#:	440/5-80-019
	NTIS#:	PB81-117301
	ERIC#:	621d
Ambient Water Quality Criteria for Aluminum - 1988	EPA#:	440/5-86-008
	NTIS#:	PB88-245998
	ERIC#:	622d
Ambient Water Quality Criteria for Ammonia	EPA#:	440/5-85-001
	NTIS#:	PB85-227114
	ERIC#:	623d
Ambient Water Quality Criteria for Ammonia (Saltwater)	EPA#:	440/5-88-004
	NTIS#:	PB89-195242
	ERIC#:	534d
Ambient Water Quality Criteria for Antimony	EPA#:	440/5-80-020
	NTIS#:	PB81-117319
	ERIC#:	535d

Ambient Water Quality Criteria for Arsenic	EPA#:	440/5-80-021
	NTIS#:	PB81-117327
	ERIC#:	536d
Ambient Water Quality Criteria for Arsenic 1984	EPA#:	440/5-84-033
	NTIS#:	PB85-227445
	ERIC#:	537d
Ambient Water Quality Criteria for Asbestos	EPA#:	440/5-80-022
	NTIS#:	PB81-117335
	ERIC#:	538d
Ambient Water Quality Criteria for Bacteria - 1986	EPA#:	440/5-84-002
	NTIS#:	PB86-158045
	ERIC#:	539d
Ambient Water Quality Criteria for Benzene	EPA#:	440/5-80-018
	NTIS#:	PB81-117293
	ERIC#:	540d
Ambient Water Quality Criteria for Benzidine	EPA#:	440/5-80-023
	NTIS#:	PB81-117343
	ERIC#:	541d
Ambient Water Quality Criteria for Beryllium	EPA#:	440/5-80-024
	NTIS#:	PB81-117350
	ERIC#:	542d
Ambient Water Quality Criteria for Cadmium	EPA#:	440/5-80-025
	NTIS#:	PB81-117368
	ERIC#:	543d

Ambient Water Quality Criteria for Cadmium - 1984	EPA#:	440/5-84-032
	NTIS#:	PB85-224031
	ERIC#:	642d
Ambient Water Quality Criteria for Carbon Tetrachloride	EPA#:	440/5-80-026
	NTIS#:	PB81-117376
	ERIC#:	544d
Ambient Water Quality Criteria for Chlordane	EPA#:	440/5-80-027
	NTIS#:	PB81-117384
	ERIC#:	615d
Ambient Water Quality Criteria for Chloride	EPA#:	440/5-88-001
	NTIS#:	PB88-175047
	ERIC#:	545d
Ambient Water Quality Criteria for Chlorinated Benzenes	EPA#:	440/5-80-028
	NTIS#:	PB81-117392
	ERIC#:	617d
Ambient Water Quality Criteria for Chlorinated Ethanes	EPA#:	440/5-80-029
	NTIS#:	PB81-117400
	ERIC#:	546d
Ambient Water Quality Criteria for Chlorinated Naphthalenes	EPA#:	440/5-80-031
	NTIS#:	PB81-117426
	ERIC#:	547d
Ambient Water Quality Criteria for Chlorinated Phenols	EPA#:	440/5-80-032
	NTIS#:	PB81-117434
	ERIC#:	616d



Ambient Water Quality Criteria for Chlorine	EPA#:	440/5-84-030
	NTIS#:	PB85-227429
	ERIC#:	548d
Ambient Water Quality Criteria for Chloroalkyl Ethers	EPA#:	440/5-80-030
	NTIS#:	PB81-117418
	ERIC#:	549d
Ambient Water Quality Criteria for Chloroform	EPA#:	440/5-80-033
	NTIS#:	PB81-117442
	ERIC#:	550d
Ambient Water Quality Criteria for 2-Chlorophenol	EPA#:	440/5-80-034
	NTIS#:	PB81-117459
	ERIC#:	551d
Ambient Water Quality Criteria for Chlorpyrifos	EPA#:	440/5-86-005
	NTIS#:	PB87-105367
	ERIC#:	552d
Ambient Water Quality Criteria for Chromium	EPA#:	440/5-80-035
	NTIS#:	PB81-117467
	ERIC#:	553d
Ambient Water Quality Criteria for Chromium - 1984	EPA#:	440/5-84-029
	NTIS#:	PB85-227478
	ERIC#:	554d
Ambient Water Quality Criteria for Copper	EPA#:	440/5-80-036
	NTIS#:	PB81-117475
	ERIC#:	555d

Ambient Water Quality Criteria for Copper - 1984	EPA#:	440/5-84-031
	NTIS#:	PB85-227023
	ERIC#:	556d
Ambient Water Quality Criteria for Cyanide	EPA#:	440/5-84-028
	NTIS#:	PB85-227460
	ERIC#:	557d
Ambient Water Quality Criteria for Cyanides	EPA#:	440/5-80-037
	NTIS#:	PB81-117483
	ERIC#:	558d
Ambient Water Quality Criteria for DDT and Metabolites	EPA#:	440/5-80-038
	NTIS#:	PB81-117491
	ERIC#:	559d
Ambient Water Quality Criteria for Dichlorobenzenes	EPA#:	440/5-80-039
	NTIS#:	PB81-117509
	ERIC#:	560d
Ambient Water Quality Criteria for Dichlorobenzidine	EPA#:	440/5-80-040
	NTIS#:	PB81-117517
	ERIC#:	561d
Ambient Water Quality Criteria for Dichloroethylenes	EPA#:	440/5-80-041
	NTIS#:	PB81-117525
	ERIC#:	562d
Ambient Water Quality Criteria for 2,4-Dichlorophenol	EPA#:	440/5-80-042
	NTIS#:	PB81-117533
	ERIC#:	563d

Ambient Water Quality Criteria for Dichloropropane/Dichloropropene	EPA#: 440/5-80-043 NTIS#: PB81-117541 ERIC#: 564d
Ambient Water Quality Criteria for 2,4- Dimethylphenol	EPA#: 440/5-80-044 NTIS#: PB81-117558 ERIC#: 565d
Ambient Water Quality Criteria for Dinitrotoluene	EPA#: 440/5-80-045 NTIS#: PB81-117566 ERIC#: 566d
Ambient Water Quality Criteria for Diphenylhydrazine	EPA#: 440/5-80-062 NTIS#: PB81-117731 ERIC#: 567d
Ambient Water Quality Criteria for Dissolved Oxygen	EPA#: 440/5-86-003 NTIS#: PB86-208253 ERIC#: 568d
Ambient Water Quality Criteria for Endosulfan	EPA#: 440/5-80-046 NTIS#: PB81-117574 ERIC#: 569d
Ambient Water Quality Criteria for Endrin	EPA#: 440/5-80-047 NTIS#: PB81-117582 ERIC#: 570d
Ambient Water Quality Criteria for Ethylbenzene	EPA#: 440/5-80-048 NTIS#: PB81-117590 ERIC#: 571d

Ambient Water Quality Criteria for Fluoranthene	EPA#:	440/5-80-049
	NTIS#:	PB81-117608
	ERIC#:	572d
Ambient Water Quality Criteria for Haloethers	EPA#:	440/5-80-050
	NTIS#:	PB81-117616
	ERIC#:	573d
Ambient Water Quality Criteria for Halomethanes	EPA#:	440/5-80-051
	NTIS#:	PB81-117624
	ERIC#:	574d
Ambient Water Quality Criteria for Heptachlor	EPA#:	440/5-80-052
	NTIS#:	PB81-117632
	ERIC#:	575d
Ambient Water Quality Criteria for Hexachlorobutadiene	EPA#:	440/5-80-053
	NTIS#:	PB81-117640
	ERIC#:	576d
Ambient Water Quality Criteria for Hexachlorocyclohexane	EPA#:	440/5-80-054
	NTIS#:	PB81-117657
	ERIC#:	577d
Ambient Water Quality Criteria for Hexachlorocyclopentadiene	EPA#:	440/5-80-055
	NTIS#:	PB81-117665
	ERIC#:	578d
Ambient Water Quality Criteria for Isophorone	EPA#:	440/5-80-056
	NTIS#:	PB81-117673
	ERIC#:	579d

Ambient Water Quality Criteria for Lead	EPA#:	440/5-80-057
	NTIS#:	PB81-117681
	ERIC#:	580d
Ambient Water Quality Criteria for Lead - 1984	EPA#:	440/5-84-027
	NTIS#:	PB85-227437
	ERIC#:	581d
Ambient Water Quality Criteria for Mercury	EPA#:	440/5-80-058
	NTIS#:	PB81-117699
	ERIC#:	582d
Ambient Water Quality Criteria for Mercury - 1984	EPA#:	440/5-84-026
	NTIS#:	PB85-227452
	ERIC#:	643d
Ambient Water Quality Criteria for Naphthalene	EPA#:	440/5-80-059
	NTIS#:	PB81-117707
	ERIC#:	583d
Ambient Water Quality Criteria for Nickel	EPA#:	440/5-80-060
	NTIS#:	PB81-117715
	ERIC#:	584d
Ambient Water Quality Criteria for Nickel - 1986	EPA#:	440/5-86-004
	NTIS#:	PB87-105359
	ERIC#:	585d
Ambient Water Quality Criteria for Nitrobenzene	EPA#:	440/5-80-061
	NTIS#:	PB81-117723
	ERIC#:	586d

Ambient Water Quality Criteria for Nitrophenols	EPA#:	440/5-80-063
	NTIS#:	PB81-117749
	ERIC#:	587d
Ambient Water Quality Criteria for Nitrosamines	EPA#:	440/5-80-064
	NTIS#:	PB81-117756
	ERIC#:	588d
Ambient Water Quality Criteria for Parathion	EPA#:	440/5-86-007
	NTIS#:	PB87-105383
	ERIC#:	589d
Ambient Water Quality Criteria for Pentachlorophenol	EPA#:	440/5-80-065
	NTIS#:	PB81-117764
	ERIC#:	590d
Ambient Water Quality Criteria for Pentachlorophenol - 1986	EPA#:	440/5-86-009
	NTIS#:	PB87-105391
	ERIC#:	591d
Ambient Water Quality Criteria for Phenol	EPA#:	440/5-80-066
	NTIS#:	PB81-117772
	ERIC#:	592d
Ambient Water Quality Criteria for Phthalate Esters	EPA#:	440/5-80-067
	NTIS#:	PB81-117780
	ERIC#:	593d
Ambient Water Quality Criteria for Polychlorinated Biphenyls	EPA#:	440/5-80-068
	NTIS#:	PB81-117798
	ERIC#:	628d

Ambient Water Quality Criteria for Polynuclear Aromatic Hydrocarbons	EPA#:	440/5-80-069
	NTIS#:	PB81-117806
	ERIC#:	594d
Ambient Water Quality Criteria for Selenium	EPA#:	440/5-80-070
	NTIS#:	PB81-117814
	ERIC#:	595d
Ambient Water Quality Criteria for Selenium 1987	EPA#:	440/5-87-006
	NTIS#:	PB88-142237
	ERIC#:	596d
Ambient Water Quality Criteria for Silver	EPA#:	440/5-80-071
	NTIS#:	PB81-117822
	ERIC#:	597d
Ambient Water Quality Criteria for 2,3,7,8-Tetrachlorodibenzo-p-dioxin	EPA#:	440/5-84-007
	NTIS#:	PB89-169825
	ERIC#:	598d
Ambient Water Quality Criteria for Tetrachloroethylene	EPA#:	440/5-80-073
	NTIS#:	PB81-117830
	ERIC#:	599d
Ambient Water Quality Criteria for Thallium	EPA#:	440/5-80-074
	NTIS#:	PB81-117848
	ERIC#:	600d
Ambient Water Quality Criteria for Toluene	EPA#:	440/5-80-075
	NTIS#:	PB81-117855
	ERIC#:	601d

Ambient Water Quality Criteria for Toxaphene	EPA#:	440/5-80-076
	NTIS#:	PB81-117863
	ERIC#:	602d
 Ambient Water Quality Criteria for Toxaphene - 1986	 EPA#:	 440/5-86-006
	NTIS#:	PB87-105375
	ERIC#:	603d
 Ambient Water Quality Criteria for Trichloroethylene	 EPA#:	 440/5-80-077
	NTIS#:	PB81-117871
	ERIC#:	604d
 Ambient Water Quality Criteria for Vinyl Chloride	 EPA#:	 440/5-80-078
	NTIS#:	PB81-117889
	ERIC#:	605d
 Ambient Water Quality Criteria for Zinc	 EPA#:	 440/5-80-079
	NTIS#:	PB81-117897
	ERIC#:	607d
 Ambient Water Quality Criteria for Zinc - 1987	 EPA#:	 440/5-87-003
	NTIS#:	PB87-153581
	ERIC#:	606d
 Developing Criteria to Protect Our Nation's Waters (Pamphlet)	 EPA#:	 440/5-90-021
 Guidelines for Deriving Numerical National Water Quality Criteria for the Protection of Aquatic Organisms and Their Uses	 EPA#:	 PB85-227049
	NTIS#:	



Interim Guidance on Interpretation and Implementation of Aquatic Life Criteria for Metals	EPA#: NTIS#: ERIC#: 113d
<p>Quality Criteria for Water - 1976</p> <p>This contains Ambient Water Quality Criteria for:</p> <p>Aesthetics, Alkalinity, Bacteria 1976, Barium, Boron, Chlorophenoxy, Color, Demeton, Gasses (Total Dissolved), Guthion, Hardness, Herbicides, Iron, Malathion, Manganese, Methoxychlor, Mirex, Nitrates/Nitrites, Oil and Grease, Ph, Phosphorus, Solids (Dissolved) and Salinity, Solids (Suspended) and Turbidity, Sulfides/Hydrogen Sulfide, Tainting Substances, Temperature</p>	EPA#: NTIS#: PB-263943
Quality Criteria for Water - 1986	EPA#: 440/5-86-001 NTIS#: PB87-226759
Synopsis of Water Effect Ratios for Heavy Metals as Derived for Site- Specific Water Quality Criteria	EPA#: NTIS#: PB93-157584 ERIC: 380d
Water Quality Criteria Summary - wall chart	EPA#:

## **5. BIOLOGICAL QUALITY CRITERIA**

Biological Criteria: Guide to Technical Literature	EPA#:	440/5-91-004
	NTIS#:	PB92-231489
	ERIC#:	155d
Biological Criteria: National Program Guidance for Surface Waters	EPA#:	440/5-90-004
	NTIS#:	PB92-231497
	ERIC#:	154d
Biological Criteria: Research and Regulation - Proceedings of a Symposium	EPA#:	440/5-91-005
	NTIS#:	PB92-231505
	ERIC#:	156d
Biological Criteria: State Development and Implementation Efforts	EPA#:	440/5-91-003
	NTIS#:	PB92-231513
	ERIC#:	157d
Policy on Biological Assessments and Criteria Final	EPA#:	
	NTIS#:	
	ERIC#:	657d
Procedures for Initiating Narrative Biological Criteria	EPA#:	822/B-92-002
	NTIS#:	PB93-152585
	ERIC#:	349d

## **6. SEDIMENT QUALITY CRITERIA**

Briefing Report to the EPA Science Advisory Board on the Equilibrium Partitioning Approach to Generating Sediment Quality Criteria	EPA#: 440/5-89-002 NTIS#: PB92-231521 ERIC#: 112d
Guidance for Sampling of and Analyzing for Organic Contaminants in Sediments	EPA#: 440/4-87-010 NTIS#: PB93-154003 ERIC#: 120d
An SAB Report: Review of Sediment Criteria Development Methodology for Non-Ionic Organic Contaminants	EPA#: SAB/EPEC-93-002 NTIS#: 114d ERIC#:
Sediment Quality Criteria for the Protection of Benthic Organisms: Acenaphthene - Proposed	EPA#: 440/5-91-006 NTIS#: PB93-154011 ERIC#: 119d
Dieldrin - Proposed	EPA#: 440/5-91-007 NTIS#: PB93-153930 ERIC#: 118d
Endrin - Proposed	EPA#: 440/5-91-008 NTIS#: PB93-155943 ERIC#: 117d
Fluoranthene   Proposed	EPA#: 440/5-91-009 NTIS#: PB93-155950 ERIC#: 116d
Phenanthrene - Proposed	EPA#: 440/5-91-010 NTIS#: PB93-153880 ERIC#: 115d

## **7. DRINKING WATER QUALITY CRITERIA AND ADVISORIES**

Drinking Water Health Advisories for 15 Volatile Organic Chemicals (VOCs) - complete set	EPA#:	
	NTIS#:	PB90-259821
	ERIC#:	15 VOC
bis-(2-Chloroisopropyl) Ether	ERIC#:	292d
Bromochloromethane	ERIC#:	290d
Bromomethane	ERIC#:	291d
Chloromethane	ERIC#:	293d
Dichlorodifluoromethane	ERIC#:	294d
Hexachlorobutadiene	ERIC#:	295d
Naphthalene	ERIC#:	296d
o-Chlorotoluene	ERIC#:	297d
p-Chlorotoluene	ERIC#:	298d
1,1,1,2-Tetrachloroethane	ERIC#:	299d
1,2,4-Trichlorobenzene	ERIC#:	300d
1,3,5-Trichlorobenzene	ERIC#:	301d
1,1,2-Trichloroethane	ERIC#:	302d
Trichlorofluoromethane	ERIC#:	304d
1,2,3-Trichloropropane	ERIC#:	303d
Drinking Water Health Advisories for 16 Pesticides complete set	EPA#:	
	NTIS#:	PB87-200176
	ERIC#:	16 PEST
Alachlor	ERIC#:	255d
Aldicarb (Sulfoxide and Sulfone)	ERIC#:	256d
Carbofuran	ERIC#:	257d

Chlordane	ERIC#:	258d
1,2-Dibromo-3-Chloropropane (DBCP)	ERIC#:	259d
2,4-Dichlorophenoxyacetic Acid	ERIC#:	260d
1,2-Dichloropropane	ERIC#:	261d
Endrin	ERIC#:	263d
Ethylene Dibromide	ERIC#:	262d
Heptachlor and Heptachlor Epoxide	ERIC#:	264d
Lindane	ERIC#:	265d
Methoxychlor	ERIC#:	266d
Oxamyl	ERIC#:	267d
Pentachlorophenol	ERIC#:	268d
Toxaphene	ERIC#:	269d
2,4,5-Trichlorophenoxyacetic Acid	ERIC#:	270d
Drinking Water Health Advisories for 25 Organic Contaminants - complete set	EPA#:	
	NTIS#:	PB87-235578
	ERIC#:	25 ORG
Acrylamide	ERIC#:	426d
Benzene	ERIC#:	427d
Carbon Tetrachloride	ERIC#:	428d
Chlorobenzene	ERIC#:	429d
cis-1,2-Dichloroethylene	ERIC#:	433d
1,2-Dichloroethane	ERIC#:	431d
1,1-Dichloroethylene	ERIC#:	432d
Epichlorohydrin	ERIC#:	435d
Ethylbenzene	ERIC#:	436d
Ethylene Glycol	ERIC#:	437d

Hexachlorobenzene	ERIC#:	438d
Methyl Ethyl Ketone	ERIC#:	440d
n-Hexane	ERIC#:	439d
ortho-, meta-, and para-Dichlorobenzenes	ERIC#:	430d
Styrene	ERIC#:	441d
2,3,7,8-Tetrachlorodibenzo-p-Dioxin	ERIC#:	442d
Tetrachloroethylene (PCE)	ERIC#:	443d
Toluene	ERIC#:	444d
trans-1,2-Dichloroethylene	ERIC#:	434d
1,1,1-Trichloroethane	ERIC#:	445d
Trichloroethylene	ERIC#:	446d
Vinyl Chloride	ERIC#:	447d
Xylenes	ERIC#:	448d
Drinking Water Health Advisories for 7 Inorganics and Legionella - complete set	EPA#:	
	NTIS#:	PB87-235586
	ERIC#:	7 INORG
Barium	ERIC#:	305d
Cadmium - draft	ERIC#:	306d
Chromium	ERIC#:	307d
Cyanide	ERIC#:	308d
Mercury	ERIC#:	309d
Nickel	ERIC#:	310d
Nitrate/Nitrite	ERIC#:	311d

Drinking Water Health Advisories for Munitions - complete set	EPA#:	
	NTIS#:	
	ERIC#:	MUNT
Diethylene Glycol Dinitrate (DEGDN)	NTIS#:	PB93-117000
	ERIC#:	312d
Diisopropyl Methylphosphonate (DIMP)	ERIC#:	313d
Dimethyl Methylphosphonate (DMMP)	NTIS#:	PB93-117018
	ERIC#:	314d
1,3-Dinitrobenzene	ERIC#:	315d
2,4- and 2,6-Dinitrotoluene (DNT)	NTIS#:	PB92-189315
	ERIC#:	316d
Diphenylamine (DPA)	NTIS#:	PB93-116978
	ERIC#:	317d
1,4-Dithiane	NTIS#:	PB93-117026
	ERIC#:	318d
Hexachloroethane	ERIC#:	319d
Hexahydro-1,3,5,7-tetranitro-1,3,5-triazine (RDX)	ERIC#:	320d
Isopropyl Methylphosphonic Acid	NTIS#:	PB92-232149
	ERIC#:	321d
Nitrocellulose	ERIC#:	322d
Nitroguanidine (NQ)	ERIC#:	323d
Octahydro-1,3,5,7-tetranitro-1,3,5,7-tetrazocine (HMX)	ERIC#:	324d
p-Chlorophenyl Methyl Sulfide, -Sulfoxide, and Sulfone (PCPMS, PCPMSO, and PCPMSO <sub>2</sub> )	NTIS#:	PB93-116986
	ERIC#:	325d
Tetranitromethane (TNM)	NTIS#:	PB93-116994
	ERIC#:	326d
Trinitroglycerol	ERIC#:	327d
Trinitrotoluene	ERIC#:	328d
White Phosphorus	ERIC#:	329d

Drinking Water Health Advisories  
for 50 Pesticides

	EPA#:	
	NTIS#:	PB88-245931
	ERIC#:	50 PEST
Acifluorfen	ERIC#:	205d
Ametryn	ERIC#:	206d
Ammonium Sulfamate	ERIC#:	207d
Atrazine	ERIC#:	208d
(Baygon) Propoxur	ERIC#:	209d
Bentazon	ERIC#:	210d
Bromacil	ERIC#:	211d
Butylate	ERIC#:	212d
Carbaryl	ERIC#:	213d
Carboxin	ERIC#:	214d
Chloramben	ERIC#:	215d
Chlorothalonil	ERIC#:	216d
Cyanazine	ERIC#:	217d
Dalapon	ERIC#:	219d
DCPA (Dacthal)	ERIC#:	218d
Diazinon	ERIC#:	220d
Dicamba	ERIC#:	221d
1,3-Dichloropropene	ERIC#:	222d
Dieldrin	ERIC#:	223d
Dimethrin	ERIC#:	224d
Dinoseb	ERIC#:	225d
Diphenamid	ERIC#:	226d
Disulfoton	ERIC#:	228d
Diuron	ERIC#:	229d



Endothall	ERIC#:	230d
Ethylene Thiourea	ERIC#:	231d
Fenamiphos	ERIC#:	232d
Fluometuron	ERIC#:	233d
Fonofos	ERIC#:	234d
Glyphosate	ERIC#:	235d
Hexazinane	ERIC#:	236d
Maleic Hydrazide	ERIC#:	237d
MCPA (4-chloro-Methylphenoxy)	ERIC#:	238d
Methomyl	ERIC#:	239d
Methyl Parathion	ERIC#:	240d
Metolachlor	ERIC#:	241d
Metribuzin	ERIC#:	242d
Paraquat	ERIC#:	243d
Picloram	ERIC#:	244d
Prometon	ERIC#:	245d
Pronamide	ERIC#:	246d
Propachlor	ERIC#:	247d
Propazine	ERIC#:	248d
Propham	ERIC#:	249d
Simazine	ERIC#:	250d
Tebuthiuron	ERIC#:	252d
Terbacil	ERIC#:	227d
Terbufos	ERIC#:	253d
2,4,5-Trichlorophenoxyacetic Acid	ERIC#:	251d
Trifluralin	ERIC#:	254d

## **8. WATER QUALITY MODELING AND WASTE LOAD ALLOCATIONS**

De Minimis Discharges Study: Report to Congress	EPA#:	440/4-91-002a
	NTIS#:	PB92-231554
	ERIC#:	129d
Dynamic Toxics Waste Load Allocation Model (DYNTOX) User's Manual	EPA#:	440/4-84-035
	NTIS#:	PB92-231570
	ERIC#:	131d
EPA's Review and Approval Procedure for State Submitted TMDLs/WLAs	EPA#:	
	NTIS#:	PB92-231588
	ERIC#:	124d
Guidance for State Water Monitoring and Waste Load Allocation Programs	EPA#:	440/4-85-031
	NTIS#:	PB92-231612
	ERIC#:	125d
Guidance for Water Quality-Based Decisions: The TMDL Process	EPA#:	440/4-91-001
	NTIS#:	PB92-231620
	ERIC#:	132d
Handbook: Stream Sampling for Waste Load Allocations	EPA#:	625/6-86-013
	NTIS#:	PB87-234753
	ERIC#:	123d
Permit Writer's Guide to Water Quality-Based Permitting for Toxic Pollutants	EPA#:	440/4-87-005
	NTIS#:	PB93-184620
	ERIC#:	640d

Protecting Our Nation's Waters through Water Quality-Based Controls - pamphlet	EPA#:	823/F-93-011
Rates, Constants, and Kinetics Formulations in Surface Water Quality Monitoring - Second Edition	EPA#:	600/3-85-040
	NTIS#:	PB85-245314
	ERIC#:	160d
Technical Guidance Manual for Performing Waste Load Allocations - Book II: Streams and Rivers - Chapter 1: Biochemical Oxygen Demand/Dissolved Oxygen	EPA#:	440/4-84-020
	NTIS#:	PB86-178936
	ERIC#:	337d
Technical Guidance Manual for Performing Waste Load Allocations Book II: Streams and Rivers - Chapter 2: Nutrient/Eutrophication Impacts	EPA#:	440/4-84-021
	NTIS#:	PB86-178944
	ERIC#:	137d
Technical Guidance Manual for Performing Waste Load Allocations Book II: Streams and Rivers - Chapter 3: Toxic Substances	EPA#:	440/4-84-022
	NTIS#:	PB86-170628
	ERIC#:	336d
Technical Guidance Manual for Performing Waste Load Allocations - Book III: Estuaries - Part 1: Estuaries and Waste Load Allocation Models	EPA#:	823/R-92-002
	NTIS#:	PB92-231729
	ERIC#:	130d
Technical Guidance Manual for Performing Waste Load Allocations - Book III: Estuaries - Part 2: Applications of Estuarine Waste Load Allocation Models	EPA#:	823/R-92-003
	NTIS#:	PB92-231737
	ERIC#:	335d
Technical Guidance Manual for Performing Waste Load Allocations Book III: Estuaries - Part 3: Use of Mixing Zone Models in Estuarine Waste Load Allocations	EPA#:	823/R-92-004
	NTIS#:	PB93-145704
	ERIC#:	331d

Technical Guidance Manual for Performing Waste Load Allocations - Book III: Estuaries - Part 4: Critical Review of Coastal Embayment and Estuarine Waste Load Allocation Modeling	EPA#: NTIS#: ERIC#:	823/R-92-005 PB93-144202 330d
Technical Guidance Manual for Performing Waste Load Allocations Book IV: Lakes and Impoundments Chapter 2: Nutrient/Eutrophication Impacts	EPA#: NTIS#: ERIC#:	440/4-84-019 PB86-178928 135d
Technical Guidance Manual for Performing Waste Load Allocations - Book IV: Lakes, Reservoirs, and Impoundments - Chapter 3: Toxic Substances Impact	EPA#: NTIS#: ERIC#:	440/4-87-002 PB92-231760 350d
Technical Guidance Manual for Performing Waste Load Allocations Book VI: Design Conditions - Chapter 1: Stream Design Flow for Steady-State Modeling	EPA#: NTIS#: ERIC#:	440/4-87-004 PB92-231778 134d
Technical Guidance Manual for Performing Waste Load Allocations - Book VII: Permit Averaging	EPA#: NTIS#: ERIC#:	440/4-84-023 PB86-178951 122d
Technical Guidance Manual for Performing Waste Load Allocations - Simplified Analytical Method for Determining NPDES Effluent Limitations for POTWs Discharging into Low-Flow Streams	EPA#: NTIS#: ERIC#:	440/4-86-015 PB92-231786 136d
Technical Guidance on Supplementary Stream Design Conditions for Steady State Modeling - Final	EPA#: NTIS#: ERIC#:	440/4-88-091 PB92-231844 133D

Technical Support Document for Water Quality- Based Toxics Control	EPA#:	505/2-90-001
	NTIS#:	PB91-127415
	ERIC#:	334d
Water Quality Assessment: A Screening Procedure for Toxic and Conventional Pollutants in Surface and Ground Water - Part I	EPA#:	600/6-85-002a
	NTIS#:	PB86-122496
	ERIC#:	158d
Water Quality Assessment: A Screening Procedure for Toxic and Conventional Pollutants in Surface and Ground Water Part II	EPA#:	600/6-85-002b
	NTIS#:	PB86-122504
	ERIC#:	159d
Water Quality Assessment: A Screening Procedure for Toxic and Conventional Pollutants in Surface and Ground Water - Part III	EPA#:	600/6-85-002c
	NTIS#:	PB86-162195

## **9. ANALYTICAL LABORATORY METHODS**

Analytical Method for Determination of Acid Volatile Sulfide in Sediment - draft	EPA#: NTIS#: ERIC#:	 PB93-155901 121d
Analytical Methods for the National Sewage Sludge Survey	EPA#: NTIS#: ERIC#:	 440/1-90-023 105w
C, N, and O Compounds - Cycloprate, Kinoprene, Methoprene, and Resmethrin: Method 616	EPA#: NTIS#:	 600/4-85-019 PB85-188951
Determination of Bendiocarb in Industrial and Municipal Wastewater	EPA#: NTIS#:	 600/4-85-021 PB85-188159
Determination of Benomyl and Carbendazim in Industrial and Municipal Wastewater: Method 631	EPA#: NTIS#:	 600/4-82-012 PB82-156068
Determination of Bensulide in Industrial and Municipal Wastewater	EPA#: NTIS#:	 600/4-85-022 PB85-188977
Determination of Carbamate and Urea Pesticides in Industrial and Municipal Wastewater: Method 632	EPA#: NTIS#:	 600/4-82-014 PB82-156084
Determination of Chlorinated Herbicides in Industrial and Municipal Wastewater: Method 615	EPA#: NTIS#:	 600/4-82-005 PB82-155995
Determination of Cyanazine in Industrial and Municipal Wastewater: Method 629	EPA#: NTIS#:	 600/4-82-010 PB82-156043

Determination of Dinitroaniline Pesticides in Industrial and Municipal Wastewater: Method 627	EPA#: NTIS#:	600/4-82-009 PB82-156035
Determination of Diphenylamine in Industrial and Municipal Wastewater	EPA#: NTIS#:	600/4-85-025 PB85-190874
Determination of Dithiocarbamate Pesticides in Industrial and Municipal Wastewater: Method 630	EPA#: NTIS#:	600/4-82-011 PB82-156050
Determination of Hexachlorophene and Dichlorophene in Industrial and Municipal Wastewater	EPA#: NTIS#:	600/4-85-027 PB85-188209
Determination of Mercaptobenzothiazole in Industrial and Municipal Wastewater	EPA#: NTIS#:	600/4-85-026 PB85-191120
Determination of Organohalide Pesticides and PCBs in Industrial and Municipal Wastewater: Method 617	EPA#: NTIS#:	600/4-82-006 PB82-156001
Determination of Organonitrogen Pesticides in Industrial and Municipal Wastewater: Method 633	EPA#: NTIS#:	600/4-82-013 PB82-156076
Determination of Organophosphorus Pesticides in Industrial and Municipal Wastewater: Method 614	EPA#: NTIS#:	600/4-82-004 PB82-155987
Determination of Organophosphorus Pesticides in Industrial and Municipal Wastewater: Method 622	EPA#: NTIS#:	600/4-82-008 PB82-156027
Determination of Oryzalin in Industrial and Municipal Wastewater	EPA#: NTIS#:	600/4-85-024 PB85-188985

Determination of Rotenone in Industrial and Municipal Wastewater	EPA#: 600/4-85-023 NTIS#: PB85-188993
Determination of Triazine Pesticides in Industrial and Municipal Wastewater: Method 619	EPA#: 600/4-82-007 NTIS#: PB82-156019
Determination of Volatile Pesticides in Industrial and Municipal Wastewater	EPA#: 600/4-85-020 NTIS#: PB85-189918
Guidance on Evaluation, Resolution, and Documentation of Analytical Problems Associated with Compliance Monitoring	EPA#: 821/B-93-001 NTIS#: 676d ERIC#:
Guidelines Establishing Test Procedures for the Analysis of Pollutants Under the Clean Water Act; Final Rule (Methods 200.7, 601-613, 624, 625, 1624, 1625) 40 CFR Part 136 Federal Register - October 26, 1984	EPA#: 440/1-85-034
Interim Protocol for the Automated Analysis of Semivolatile Organic Compounds by Gas Chromatography/Fourier Transform Infrared (GC/FT-IR) Spectrometry	EPA#: 600/4-84-081 NTIS#: PB85-115186
Method 1613: Tetra-through Octa-Chlorinated Dioxins and Furans by Isotope Dilution HRGC/HRMS Revision A	EPA#: 440/1-90-024



Method 1624: Volatile Organic Compounds by Isotope Dilution GCMS Method 1625: Semivolatile Organic Compounds by Isotope Dilution GCMS	EPA#:	440/1-89-023
Methods for the Determination of Diesel, Mineral, and Crude Oils in Offshore Oil and Gas Industry Discharges: Methods 1651A, 1654A, 1662, 1663	EPA#: NTIS#: ERIC#:	821/R-92-008 PB93-166932 410d
Methods for the Determination of Nonconventional Pesticides in Municipal and Industrial Wastewater: Methods 604.1, 608.1, 608.2, 614, 614.1, 615-620, 622, 622.1, 627, 629, 630, 630.1, 631, 632, 632.1, 633, 633.1, 634-646, 1656-1661	EPA#: NTIS#: ERIC#:	821/R-92-002 PB92-190289 679d
Preliminary Report of EPA Efforts to Replace Freon for the Determination of Oil and Grease	EPA#: NTIS#: ERIC#:	821/R-93-009  680d
Sampling and Analysis Procedures for Screening of Industrial Effluents for Priority Pollutants	EPA#: NTIS#: ERIC#:	440/1-77-001 PB93-212017 656d
Sampling Procedures and Protocols for the National Sewage Sludge Survey	EPA#: NTIS#: ERIC#:	440/1-89-024 PB93-156974 420w
Test Methods for Escherichia Coli and Enterococci in Water by the Membrane Filter Procedure	EPA#: NTIS#:	600/4-85-076 PB86-158052

Water Programs; Guidelines Establishing Test  
Procedures for the Analysis of Pollutants; Proposed  
Rule (Method 1613)  
40 CFR Part 136  
Federal Register February 7, 1991

EPA#: 440/1-91-013

## **10. CONTAMINATED SEDIMENTS**

Contaminated Sediments: Relevant Statutes and EPA Program Activities	EPA#:	506/6-90-003
	NTIS#:	PB92-231547
	ERIC#:	341d
Contaminated Sediments News - newsletter (back issues available)	EPA#:	.
Erosion and Sediment Control Handbook	EPA#:	440/3-78-003
	NTIS#:	PB93-161669
	ERIC#:	342d
Managing Contaminated Sediments: EPA Decision-Making Processes	EPA#:	506/6-90-002
	NTIS#:	PB92-231653
	ERIC#:	126d
National Perspective on Sediment Quality	EPA#:	
	NTIS#:	
	ERIC#:	111d
An Overview of Sediment Quality in the U.S.	EPA#:	905/9-88-002
	NTIS#:	PB88-251384
	ERIC#:	110d
Proceedings: Tiered Testing Issues for Freshwater and Marine Sediments	EPA#:	823/R-93-001
	NTIS#:	PB93-152619
	ERIC#:	138d
Proceedings of the EPA's Contaminated Sediment Management Strategy Forums	EPA#:	823/R-92-007
	NTIS#:	PB93-126399
	ERIC#:	101d

Questions and Answers about Contaminated Sediments pamphlet	EPA#:	823/F-93-009
	NTIS#:	
	ERIC#:	647d
 Sediment Classification Methods Compendium	EPA#:	823/R-92-006
	NTIS#:	PB93-115186
	ERIC#:	105d
 Selecting Remediation Techniques for Contaminated Sediment	EPA#:	823/B-93-001
	NTIS#:	
	ERIC#:	685d

## **11. FISH TISSUE QUALITY**

Consumption Surveys for Fish and Shellfish: A Review and Analysis of Survey Methods	EPA#:	822/R-92-001
	NTIS#:	PB92-231539
	ERIC#:	128D
National Study of Chemical Residues in Fish - Vol. I	EPA#:	823/R-92-008a
	NTIS#:	PB93-114981
	ERIC#:	102d
National Study of Chemical Residues in Fish Vol. II	EPA#:	823/R-92-008b
	NTIS#:	PB93-114999
	ERIC#:	103d
National Study of Chemical Residues in Fish - Executive Summary	EPA#:	
	NTIS#:	
	ERIC#:	650d
Results of the 1989 Census of State Fish/Shellfish Consumption Advisory Programs	EPA#:	
	NTIS#:	
	ERIC#:	127d
Special Interest Group (SIG) Forum for Fish Consumption Risk Management User's Manual, v. 1.0	EPA#:	822/B-91-001
	NTIS#:	PB92-231687
	ERIC#:	332d

## **12. MUNICIPAL SEWAGE SLUDGE**

Data Element Dictionary 1988 Sewage-Sludge Use and Disposal: Questionnaire Data Base	EPA#: NTIS#: ERIC#:	 PB90-107509 419w
Fact Sheet: Sewage Sludge Use and Disposal Rule (40 CFR Part 503)	EPA#: NTIS#: ERIC#:	 822/F-92-002 633d
National Sewage-Sludge Survey Facility Analytical Questionnaire Response: Facility Characteristics	EPA#: NTIS#: ERIC#:	  417w
National Sewage-Sludge Survey - Facility Analytical Questionnaire Response: Facility Use and Disposal Practices	EPA#: NTIS#: ERIC#:	  418w
National Sewage-Sludge Survey - Facility Analytical Results: Vol. I	EPA#: NTIS#: ERIC#:	  413w
National Sewage-Sludge Survey - Facility Analytical Results: Vol. II	EPA#: NTIS#: ERIC#:	  414w
National Sewage-Sludge Survey - Facility Analytical Results: Vol. III	EPA#: NTIS#: ERIC#:	  415w

National Sewage-Sludge Survey Facility Analytical Results: Vol. IV	EPA#: NTIS#: ERIC#: 416w
National Sewage-Sludge Survey Facility Analytical Results: Vols. I-IV	EPA#: NTIS#: PB90-107491
Regulatory Impact Analysis of the Part 503 Sewage Sludge Regulation - Final	EPA#: 821/R-93-006 NTIS#: PB93-110625
Standards for the Use or Disposal of Sewage Sludge - Final Rule 40 CFR Part 257 et al. Federal Register: February 19, 1993	EPA#: NTIS#: PB93-169407 ERIC#: 626d
Diskette	EPA#: NTIS#: PB93-500478

### **13. VIDEOTAPES**

Antidegradation Policy: A Means to Maintain and Protect Existing Uses and Water Quality	EPA#:	823/V-90-003
Development of Biological Criteria for Use in Water Quality Standards	EPA#:	823/V-92-003
Development of Water Quality Criteria and Its Relationship to Water Quality Standards	EPA#:	823/V-90-002
Economic Considerations in Water Quality Standards	EPA#:	823/V-90-001
Enumeration Methods for E.Coli and Enterococci	EPA#:	823/V-86-001
Introduction to Water Quality Standards	EPA#:	823/V-90-001
Water Quality-Based Approach to Pollution Control	EPA#:	823/V-91-002
Water Quality Standards and 401 Certification	EPA#:	823/V-91-001
Water Quality Standards on Indian Lands	EPA#:	823/V-92-002



## **14. GREAT LAKES GUIDANCE**

Analyses of Acute and Chronic Data for Aquatic Life	EPA#: NTIS#: ERIC#:	 PB93-154714 396d
Assessment of Compliance Costs Resulting from Implementation of the Proposed Great Lakes Water Quality Guidance - Hard Copy	EPA#: NTIS#: ERIC#:	 PB93-154730 398d
Diskette	NTIS#: ERIC#:	 PB93-505394 398d
Derivation of Proposed Human Health and Wildlife Bioaccumulation Factors for the Great Lakes Initiative	EPA#: NTIS#: ERIC#:	 PB93-154672 392d
Fact Sheet: An Introduction to the Great Lakes Water Quality Initiative	EPA#:	823/F-93-002
Fact Sheet: Proposed Great Lakes Water Quality Guidance - Antidegradation Requirements	EPA#:	823/F-93-005
Fact Sheet: Proposed Great Lakes Water Quality Guidance - Costs and Benefits	EPA#:	823/F-93-008
Fact Sheet: Proposed Great Lakes Water Quality Guidance - Implementation	EPA#:	823/F-93-006
Fact Sheet: Proposed Great Lakes Water Quality Guidance - Indian Tribes	EPA#:	823/F-93-007

Fact Sheet: Proposed Great Lakes Water Quality Guidance - Overview	EPA#:	823/F-93-003
Fact Sheet: Proposed Great Lakes Water Quality Guidance - Water Quality Criteria	EPA#:	823/F-93-004
Great Lakes Water Quality Guidance Docket Index	EPA#: NTIS#: ERIC#:	 PB93-207769 649d
Great Lakes Water Quality Initiative Criteria Documents for the Protection of Aquatic Life in Ambient Water	EPA#: NTIS#: ERIC#:	 PB93-154656 390d
Great Lakes Water Quality Initiative Criteria Documents for the Protection of Human Health	EPA#: NTIS#: ERIC#:	 PB93-154680 393d
Great Lakes Water Quality Initiative Criteria Documents for the Protection of Wildlife: DDT, Mercury, 2,3,7,8-TCDD, PCBs - Proposed	EPA#: NTIS#: ERIC#:	 822/R-93-007 PB93-154722 397d
Great Lakes Water Quality Initiative Technical Support Document for Human Health Criteria and Values	EPA#: NTIS#: ERIC#:	 PB93-154698 394d
Great Lakes Water Quality Initiative Technical Support Document for the Procedure to Determine Bioaccumulation Factors	EPA#: NTIS#: ERIC#:	 PB93-154664 391d

Proposed Water Quality Guidance for the Great Lakes System - press kit (includes all the Fact Sheets)	EPA#: NTIS#: ERIC#: 651d
Regulatory Impact Analysis of the Proposed Great Lakes Water Quality Guidance - Hard Copy	EPA#: NTIS#: PB93-154748 ERIC#: 399d
Diskette	NTIS#: PB93-505386 ERIC#: 399d
Revision of Methodology for Deriving National Ambient Water Quality Criteria for the Protection of Human Health: Report of Workshop and EPA's Preliminary Recommendations for Revision	EPA#: NTIS#: PB93-213494 ERIC#: 687d
Technical Background Document for the Great Lakes Water Quality Guidance Implementation Procedures Compliance Cost Study - Hard Copy	EPA#: NTIS#: PB93-205508 ERIC#: 646d
Diskette	NTIS#: PB93-505402 ERIC#: 646d
Technical Support Document: Establishment of Ambient Screening Values Under the Great Lakes Water Quality Initiative	EPA#: NTIS#: PB93-154706 ERIC#: 395d
Water Quality Guidance for the Great Lakes System and Correction; Proposed Rule Parts 122 et al. Federal Register - April 16, 1993	EPA#: 823/Z-93-001 NTIS#: PB93-183002 ERIC#: 529d
Correction to the Proposed Rule (may be ordered separately) -Federal Register - August 9, 1993	

Water Quality Guidance for the Great Lakes System  
(prepublication version and some supporting  
material) - Diskette

EPA#:  
NTIS#:  
ERIC#: 526d

Wildlife Criteria Portions of the Proposed Water  
Quality Guidance for the Great Lakes System

EPA#: 822/R-93-006

## **15. OTHER**

Catalog of Office of Science and Technology Publications - 1993	EPA#:	820/B-93-001
The Effects of Discharges from Limestone Quarries on Water Quality and Aquatic Biomonitoring: Report to Congress	EPA#:	440/1-82-059
	NTIS#:	PB82-242207
	ERIC#:	678d
Fact Sheet: Water Chlorination	EPA#:	822/F-92-001
The National Dioxin Study - Tiers 3,5,6, and 7	EPA#:	440/4-87-003
	NTIS#:	PB87-213963
	ERIC#:	343d
1992: The Year of Clean Water - poster	EPA#:	820/H-92-001
Office of Science and Technology: Working to Ensure Abundant, Safe, and Clean Water Resources - pamphlet	EPA#:	800/F-92-001
	NTIS#:	
	ERIC#:	648d
Primer: Office of Science and Technology	EPA#:	820/B-92-001
	NTIS#:	PB93-152593
	ERIC#:	161d
Proceedings of the 7th Annual EPA Conference on Analysis of Pollutants in the Environment, 1984	EPA#:	440/1-84-040

Proceedings of the 8th Annual EPA Conference on Analysis of Pollutants in the Environment, 1985	EPA#:	440/1-85-035
Proceedings of the 9th Annual EPA Conference on Analysis of Pollutants in the Environment, 1986	EPA#:	440/1-86-016
Proceedings of the 10th Annual EPA Conference on Analysis of Pollutants in the Environment, 1987	EPA#:	440/1-87-015
Proceedings of the 14th Annual EPA Conference on Analysis of Pollutants in the Environment, 1991	EPA#:	821/R-92-001
	NTIS#:	PB93-156529
	ERIC#:	411d
Proceedings of the 15th Annual EPA Conference on Analysis of Pollutants in the Environment, 1992	EPA#:	821/R-92-007
	NTIS#:	PB93-152601
	ERIC#:	412d
U.S. EPA/Paper Industry Cooperative Dioxin Screening Study	EPA#:	440/1-88-025
	NTIS#:	PB93-167021
	ERIC#:	409D
Water Quality Improvement Study: Report to Congress	EPA#:	440/4-90-001
	NTIS#:	PB93-158996
	ERIC#:	677d

## **16. DATAFILES AND SOFTWARE**

Environmental Monitoring Methods Index (EMMI)  
software

This is EPA's only authorized computerized catalog of information on 2,600 regulated substances, methods for their analytes, and regulatory and office-based lists on which they appear. It includes summaries of 926 analytical methods and the former List of Lists.

EPA#:  
NTIS#: PB92-503093  
(single user)  
PB92-504257  
(5 user LAN)  
PB92-504265  
(unlimited user)

National Sewage Sludge Survey SAS Transport  
Version datafile

This consists of 2 tapes: the Analytical Assessment of Sewage Sludge at Final Disposal and the 1988 Sewage Sludge Use and Disposal Questionnaire Survey.

EPA#:  
NTIS#: PB90-501834

Selected Microcomputer Programs for Water Quality  
Assessments (Experimental) - software

Accompanying the computer program manual is an album of microcomputer disks designed to expedite water quality management information to the states from regional offices of EPA and the Fish and Wildlife Service.

EPA#:  
NTIS#: PB86-234713

## SUBJECT AND SELECTED TITLE INDEX

### 503 Rule -

-Fact Sheet: Sewage Sludge Use and Disposal Rule

--p. 85

-Regulatory Impact Analysis of the Part 503 Sewage-Sludge Regulation

--p. 86

-Standards for the Use or Disposal of Sewage Sludge - Final Rule

--p. 86

### 1992: The Year of Clean Water

--p. 92

### Acenaphthene -

-Ambient Water Quality Criteria for Acenaphthene

--p. 53

-Sediment Quality Criteria for the Protection of Benthic Organisms: Acenaphthene

--p. 66

### Acid Volatile Sulfide -

-Analytical Method for Determination of Acid Volatile Sulfide in Sediment

--p. 77

### Acidity

-Acidity-Alkalinity (Ph) - Water Quality Standards Criteria Summaries: A Compilation of State/Federal Criteria

--p. 47

### Acifluorfen Health Advisory

--p. 71

### Acrolein -

-Ambient Water Quality Criteria for Acrolein

--p. 53

### Acrylamide Health Advisory

--p. 68

### Acrylonitrile -

-Ambient Water Quality Criteria for Acrylonitrile

--p. 53

### Aesthetics -

-Quality Criteria for Water - 1976

--p. 64

### Alachlor Health Advisory

--p. 67

### Aldicarb (Sulfoxide and Sulfone) Health Advisory

--p. 67



**Aldrin -**

- Ambient Water Quality Criteria for Aldrin/Dieldrin  
--p. 53

**Alkalinity -**

- Acidity-Alkalinity (Ph) - Water Quality Standards Criteria Summaries: A Compilation of State/Federal Criteria  
--p. 47
- Quality Criteria for Water - 1976  
--p. 64

**Aluminum -**

- Ambient Water Quality Criteria for Aluminum  
--p. 53

**Aluminum Forming -**

- Aluminum, Copper, and Nonferrous Metals Forming and Metal Powders Pretreatment Standards: A Guidance Manual  
--p. 38
- Cost-Effectiveness Analysis of Effluent Limitations Guidelines and Standards for the Aluminum Forming Point Source Category  
--p. 1
- Development Document for Effluent Limitations Guidelines and Standards for the Aluminum Forming Point Source Category  
--p. 12
- Economic Impact Analysis of Effluent Limitations Guidelines and Standards for the Aluminum Forming Point Source Category  
--p. 30

**Amendments to the Water Quality Standards Regulation that Pertains to Standards on Indian Reservations; Final Rule**

--p. 40

**Ametryn Health Advisory**

--p. 71

**Ammonia -**

- Ambient Water Quality Criteria for Ammonia  
--p. 53
- Ambient Water Quality Criteria for Ammonia (Saltwater)  
--p. 53
- Nitrogen-Ammonia/Nitrate/Nitrite - Water Quality Standards Criteria Summaries: A Compilation of State/Federal Criteria  
--p. 49

**Ammonium Sulfamate Health Advisory**

--p. 71

**Analyses of Acute and Chronic Data for Aquatic Life**

--p. 88

**Analytical Method for Determination of Acid Volatile Sulfide in Sediment**

--p. 77

## Analytical Methods for the National Sewage Sludge Survey

--p. 77

## Antidegradation

-Antidegradation - Water Quality Standards Criteria Summaries: A Compilation of State/Federal Criteria

--p. 48

-Antidegradation Policy: A Means to Maintain and Protect Existing Uses and Water Quality

--p. 87

-Fact Sheet: Proposed Great Lakes Water Quality Guidance - Antidegradation Requirements

--p. 88

-Questions and Answers on Antidegradation

--p. 51

## Antimony -

-Ambient Aquatic Life Water Quality Criteria for Antimony (III)

--p. 52

-Ambient Water Quality Criteria for Antimony

--p. 53

## Arsenic

-Ambient Water Quality Criteria for Arsenic

--p. 54

-Arsenic - Water Quality Standards Criteria Summaries: A Compilation of State/Federal Criteria

--p. 48

## Asbestos -

-Ambient Water Quality Criteria for Asbestos

--p. 54

## Asbestos Industry -

-Development Document for Effluent Limitations Guidelines and New Source Performance Standards for the Building, Construction, and Paper Segments of the Asbestos Manufacturing Point Source Category

--p. 3

-Development Document for Effluent Limitations Guidelines and New Source Performance Standards for the Textile, Friction Materials, and Sealing Devices Segments of the Asbestos Manufacturing Point Source Category

--p. 11

-Economic Analysis of Effluent Guidelines for the Asbestos Industry

--p. 26

-Economic Analysis of Effluent Guidelines for the Textiles, Friction Materials, and Sealing Devices Segments of the Asbestos Manufacturing Industry

--p. 29

## Assessment of Compliance Costs Resulting from Implementation of the Proposed Great Lakes Water Quality Guidance

--p. 88

## Atrazine Health Advisory

--p. 71

## Auto Laundries -

(see "Laundries")

#### Bacteria

##### -Ambient Water Quality Criteria for Bacteria

--p. 54

##### -Bacteria Water Quality Standards Criteria Summaries: A Compilation of State/Federal Criteria

--p. 48

##### -Quality Criteria for Water 1976

--p. 64

#### Barium -

##### -Barium Health Advisory

--p. 69

##### -Quality Criteria for Water - 1976

--p. 64

#### Battery Manufacturing -

##### -Cost-Effectiveness Analysis of Effluent Limitations Guidelines and Standards for the Battery Manufacturing Point Source Category

--p. 1

##### -Development Document for Effluent Limitations Guidelines and Standards for the Battery Manufacturing Point Source Category

--p. 13

##### -Economic Impact Analysis of Effluent Limitations Guidelines and Standards for the Battery Manufacturing Industry

--p. 30

##### -Guidance Manual for Battery Manufacturing Pretreatment Standards

--p. 38

#### (Baygon) Propoxur Health Advisory

--p. 71

#### Bendiocarb -

##### -Determination of Bendiocarb in Industrial and Municipal Wastewater

--p. 77

#### The Benefits and Feasibility of Effluent Trading Between Point Sources: An Analysis in Support of Clean Water Act Reauthorization

--p. 1

#### Benomyl -

##### -Determination of Benomyl and Carbendazim in Industrial and Municipal Wastewater: Method 631

--p. 77

#### Bensulide -

##### -Determination of Bensulide in Industrial and Municipal Wastewater

--p. 77

#### Bentazon Health Advisory

--p. 71

#### Benzene -

##### -Ambient Water Quality Criteria for Benzene

--p. 54

##### -Ambient Water Quality Criteria for Chlorinated Benzenes

--p. 55

-Benzene Health Advisory

--p. 68

Benzidine -

-Ambient Water Quality Criteria for Benzidine

--p. 54

Beryllium -

-Ambient Water Quality Criteria for Beryllium

--p. 54

Biological Criteria: Guide to Technical Literature

--p. 65

Biological Criteria: National Program Guidance for Surface Waters

--p. 65

Biological Criteria: Research and Regulations - Proceedings of a Symposium

--p. 65

Biological Criteria: State Development and Implementation Efforts

--p. 65

Board Mills -

(see "Pulp, Paper, and Paperboard and Builders' Paper and Board Mills")

Boron -

-Quality Criteria for Water - 1976

--p. 64

Briefing Report to the EPA Science Advisory Board on the Equilibrium Partitioning Approach to Generating Sediment Quality Criteria

--p. 66

Bromacil Health Advisory

--p. 71

Bromochloromethane Health Advisory

--p. 67

Bromomethane Health Advisory

--p. 67

Builders' Paper -

(see "Pulp, Paper, and Paperboard and Builders' Paper and Board Mills")

Butylate Health Advisory

--p. 71

C, N, and O Compounds - Cycloprate, Kinoprene, Methoprene, and Resmethrin: Method 616

--p. 77

#### Cadmium

##### -Ambient Water Quality Criteria for Cadmium

--p. 54, 55

##### -Cadmium - Water Quality Standards Criteria Summaries: A Compilation of State/Federal Criteria

--p. 48

##### -Cadmium Health Advisory

--p. 69

#### Canned Goods -

(see "Fruits and Vegetables" or "Seafood")

#### Car Washes -

(see "Laundries")

#### Carbaryl Health Advisory

--p. 71

#### Carbendazim -

##### -Determination of Benomyl and Carbendazim in Industrial and Municipal Wastewater: Method 631

--p. 77

#### Carbofuran Health Advisory

--p. 67

#### Carbon Tetrachloride -

##### -Ambient Water Quality Criteria for Carbon Tetrachloride

--p. 55

##### -Carbon Tetrachloride Health Advisory

--p. 68

#### Carboxin Health Advisory

--p. 71

#### Catalog of Office of Science and Technology Publications - 1993

--p. 92

#### Cement and Concrete -

##### -Development Document for Effluent Limitations Guidelines and New Source Performance Standards for the Cement Manufacturing Point Source Category

--p. 4

##### -Development Document for Effluent Limitations Guidelines and New Source Performance Standards for the Concrete Products Point Source Category

--p. 4

##### -Economic Analysis of Effluent Guidelines for the Cement Industry

--p. 26

#### Chloramben Health Advisory

--p. 71

#### Chlordane -

##### -Ambient Water Quality Criteria for Chlordane

--p. 55

##### -Chlordane Health Advisory

--p. 68

**Chloride -**

**-Ambient Water Quality Criteria for Chloride**

**--p. 55**

**Chlorination -**

**-Fact Sheet: Water Chlorination**

**--p. 92**

**Chlorine -**

**-Ambient Water Quality Criteria for Chlorine**

**--p. 56**

**Chloroalkyl Ethers -**

**-Ambient Water Quality Criteria for Chloroalkyl Ethers**

**--p. 56**

**Chlorobenzene Health Advisory**

**--p. 68**

**Chloroform -**

**-Ambient Water Quality Criteria for Chloroform**

**--p. 56**

**Chloromethane Health Advisory**

**--p. 67**

**Chlorophenol -**

**-Ambient Water Quality Criteria for Chlorophenol**

**-- p. 56**

**Chlorophenoxy -**

**-Quality Criteria for Water - 1976**

**--p. 64**

**Chlorophenyl Methyl Sulfide -**

**-p-Chlorophenyl Methyl Sulfide, -Sulfoxide, -Sulfone (PCPMS, PCPMSO, and PCPMSO<sub>2</sub>) Health Advisory**

**--p. 70**

**Chlorothalonil Health Advisory**

**--p. 71**

**Chlorotoluene -**

**-o-Chlorotoluene Health Advisory**

**--p. 67**

**-p-Chlorotoluene Health Advisory**

**--p. 67**

**Chlorpyrifos -**

**-Ambient Water Quality Criteria for Chlorpyrifos**

**--p. 56**

**Chromium**

**-Ambient Water Quality Criteria for Chromium**

**--p. 56**

- Chromium - Water Quality Standards Criteria Summaries: A Compilation of State/Federal Criteria  
--p. 48
- Chromium Health Advisory  
--p. 69

Chronological Summary of Federal Water Quality Standards Promulgation Actions  
--p. 40

Coal Mining -

- Development Document for Effluent Limitations Guidelines, New Source Performance Standards, and Pretreatment Standards for the Coal Mining Point Source Category  
--p. 20
- Economic Impact Analysis of Effluent Limitations Guidelines and Standards for the Coal Mining Industry  
--p. 30

Coil Coating -

- Development Document for Effluent Limitations Guidelines and Standards for the Canmaking Subcategory of the Coil Coating Point Source Category  
--p. 13
- Development Document for Effluent Limitations Guidelines and Standards for the Coil Coating Point Source Category  
--p. 13, 14
- Economic Impact Analysis of Effluent Limitations Guidelines and Standards for the Canmaking Subcategory of the Coil Coating Point Source Category  
--p. 30

Color -

- Quality Criteria for Water - 1976  
--p. 64

A Compilation of Water Quality Standards for Marine Waters  
--p. 40

Concrete Products -

(see "Cement and Concrete")

Consumption Surveys for Fish and Shellfish: A Review and Analysis of Survey Methods  
--p. 84

Contaminated Sediments: Relevant Statutes and EPA Program Activities  
--p. 82

Contaminated Sediments News  
--p. 82

Cooling Water Intake Structures -

- Development Document for Best Technology Available for the Location, Design, Construction, and Capacity of Cooling Water Intake Structures for Minimizing Adverse Environmental Impact  
--p. 2

Copper -

- Ambient Water Quality Criteria for Copper  
--p. 56, 57

-Copper - Water Quality Standards Criteria Summaries: A Compilation of State/Federal Criteria  
--p. 48

Copper Forming -

-Aluminum, Copper, and Nonferrous Metals Forming and Metal Powders Pretreatment Standards: A Guidance Manual

--p. 38

-Development Document for Effluent Limitations Guidelines and Standards for the Copper Forming Point Source Category

--p. 14

-Economic Impact Analysis of Effluent Limitations Guidelines and Standards for the Copper Forming Industry

--p. 31

Cyanazine -

-Cyanazine Health Advisory

--p. 71

-Determination of Cyanazine in Industrial and Municipal Wastewater

--p. 77

Cyanide -

-Ambient Water Quality Criteria for Cyanide

--p. 57

-Ambient Water Quality Criteria for Cyanides

--p. 57

-Cyanide - Water Quality Standards Summaries: A Compilation of State/Federal Criteria

--p. 48

-Cyanide Health Advisory

--p. 69

Cycloprate -

-C, N, and O Compounds - Cycloprate, Kinoprene, Methoprene, and Resmethrin: Method 616

--p. 77

Dacthal (DCPA) Health Advisory

--p. 71

Dairy Industry -

-Development Document for Effluent Limitations Guidelines and New Source Performance Standards for the Dairy Product Processing Point Source Category

--p. 4

Dalapon Health Advisory

--p. 71

Dam Water Quality Study

--p. 40

Data Element Dictionary 1988 Sewage Sludge Use and Disposal: Questionnaire Data Base

--p. 85

DDT -

-Ambient Water Quality Criteria for DDT and Metabolites

--p. 57



-Great Lakes Water Quality Initiative Criteria Documents for the Protection of Wildlife: DDT, Mercury, 2,3,7,8-TCDD, PCBs  
--p. 89

De Minimis Discharges Study: Report to Congress  
--p. 73

Definitions - Water Quality Standards Summaries: A Compilation of State/Federal Criteria  
--p. 48

Demeton -  
-Quality Criteria for Water - 1976  
--p. 64

Derivation of Proposed Human Health and Wildlife Bioaccumulation Factors for the Great Lakes Initiative  
--p. 88

Designated Uses - Water Quality Standards Summaries: A Compilation of State/Federal Criteria  
--p. 48

Detergent Manufacturing -  
(see "Soaps and Detergent Industry")

Determination of Bendiocarb in Industrial and Municipal Wastewater  
--p. 77

Determination of Benomyl and Carbendazim in Industrial and Municipal Wastewater: Method 631  
--p. 77

Determination of Bensulide in Industrial and Municipal Wastewater  
--p. 77

Determination of Carbamate and Urea Pesticides in Industrial and Municipal Wastewater: Method 632  
--p. 77

Determination of Chlorinated Herbicides in Industrial and Municipal Wastewater: Method 615  
--p. 77

Determination of Cyanazine in Industrial and Municipal Wastewater: Method 629  
--p. 77

Determination of Dinitroaniline Pesticides in Industrial and Municipal Wastewater: Method 627  
--p. 78

Determination of Diphenylamine in Industrial and Municipal Wastewater  
--p. 78

Determination of Dithiocarbamate Pesticides in Industrial and Municipal Wastewater: Method 630  
--p. 78

Determination of Hexachlorophene and Dichlorophene in Industrial and Municipal Wastewater  
--p. 78

Determination of Mercaptobenzothiazole in Industrial and Municipal Wastewater  
--p. 78

Determination of Organohalide Pesticides and PCBs in Industrial and Municipal Wastewater: Method 617  
--p. 78

Determination of Organonitrogen Pesticides in Industrial and Municipal Wastewater: Method 633  
--p. 78

Determination of Organophosphorus Pesticides in Industrial and Municipal Wastewater: Method 614  
--p. 78

Determination of Organophosphorus Pesticides in Industrial and Municipal Wastewater: Method 622  
--p. 78

Determination of Oryzalin in Industrial and Municipal Wastewater  
--p. 78

Determination of Rotenone in Industrial and Municipal Wastewater  
--p. 79

Determination of Triazine Pesticides in Industrial and Municipal Wastewater: Method 619  
--p. 79

Determination of Volatile Pesticides in Industrial and Municipal Wastewater  
--p. 79

Developing Criteria to Protect Our Nation's Waters  
--p. 63

Development of Biological Criteria for Use in Water Quality Standards  
--p. 87

Development of Water Quality Criteria and Its Relationship to Water Quality Standards  
--p. 87

Di-2-Ethylhexyl Phthalate -  
-Ambient Aquatic Life Water Quality Criteria for Di-2-Ethylhexyl Phthalate  
--p. 52

Diazinon Health Advisory  
--p. 71

Dibromo-3-Chloropropane (DBCP)  
-1,2-Dibromo-3-Chloropropane (DBCP) Health Advisory  
--p. 68

Dicamba Health Advisory  
--p. 71

Dichlorobenzene -  
-Ambient Water Quality Criteria for Dichlorobenzenes  
--p. 57

-ortho-, meta-, and para-Dichlorobenzenes Health Advisory  
--p. 69

Dichlorobenzidine -  
-Ambient Water Quality Criteria for Dichlorobenzidine  
--p. 57

Dichlorodifluoromethane Health Advisory  
--p. 67

Dichloroethane -  
-1,2-Dichloroethane Health Advisory  
--p. 68

Dichloroethylene -  
-Ambient Water Quality Criteria for Dichloroethylenes  
--p. 57  
-cis-1,2-Dichloroethylene Health Advisory  
--p. 68  
-1,1-Dichloroethylene Health Advisory  
--p. 68  
-trans-1,2-Dichloroethylene Health Advisory  
--p. 69

Dichlorophene -  
-Determination of Hexachlorophene and Dichlorophene in Industrial and Municipal Wastewater  
--p. 78

Dichlorophenol -  
-Ambient Water Quality Criteria for 2,4-Dichlorophenol  
--p. 57

Dichlorophenoxyacetic Acid -  
-2,4-Dichlorophenoxyacetic Acid Health Advisory  
--p. 68

Dichloropropane/Dichloropropene -  
-Ambient Water Quality Criteria for Dichloropropane/Dichloropropene  
--p. 58  
-1,2-Dichloropropane Health Advisory  
--p. 68  
-1,3-Dichloropropene Health Advisory  
--p. 71

Dieldrin -  
-Ambient Water Quality Criteria for Aldrin/Dieldrin  
--p. 53  
-Dieldrin Health Advisory  
--p. 71  
-Sediment Quality Criteria for the Protection of Benthic Organisms: Dieldrin  
--p. 66

Diethylene Glycol Dinitrate (DEGDN) Health Advisory  
--p. 70

Diisopropyl Methylphosphonate (DIMP) Health Advisory  
--p. 70

Dimethrin Health Advisory  
--p. 71

Dimethyl Methylphosphonate (DMMP) Health Advisory  
--p. 70

Dimethylphenol -  
-Ambient Water Quality Criteria for 2,4-Dimethylphenol  
--p. 58

Dinitrobenzene -  
-1,2-Dinitrobenzene Health Advisory  
--p. 70

Dinitrotoluene -  
-Ambient Water Quality Criteria for Dinitrotoluene  
--p. 58  
-2,4- and 2,6-Dinitrotoluene (DNT) Health Advisory  
--p. 70

Dinoseb Health Advisory  
--p. 71

Dioxin -  
-Ambient Water Quality Criteria for 2,3,7,8-Tetrachlorodibenzo-p-dioxin  
--p. 62  
-Great Lakes Water Quality Initiative Criteria Documents for the Protection of Wildlife: DDT, Mercury, 2,3,7,8-TCDD, PCBs  
--p. 89  
-Method 1613: Tetra-through Octa-Chlorinated Dioxins and Furans by Isotope Dilution HRGC/HRMS Revision A  
--p. 79  
-The National Dioxin Study - Tiers 3,5,6, and 7  
--p. 92  
-2,3,7,8-Tetrachlorodibenzo-p-Dioxin Health Advisory  
--p. 69  
-Tracking Report: State Water Quality Criteria for Dioxin (2,3,7,8-TCDD)  
--p. 47  
-U.S. EPA/Paper Industry Cooperative Dioxin Screening Study  
--p. 93

Diphenamid Health Advisory  
--p. 71

Diphenylamine -  
-Determination of Diphenylamine in Industrial and Municipal Wastewater  
--p. 78  
-Diphenylamine (DPA) Health Advisory  
--p. 70

Diphenylhydrazine -

-Ambient Water Quality Criteria for Diphenylhydrazine

--p. 58

Disulfoton Health Advisory

--p. 71

Dithiane -

-1,4-Dithiane Health Advisory

--p. 70

Diuron Health Advisory

--p. 71

Drinking Water Health Advisories for Munitions

--p. 69, 70

Drinking Water Health Advisories for 7 Inorganics and Legionella

--p. 69

Drinking Water Health Advisories for 15 Volatile Organic Chemicals (VOCs)

--p. 67

Drinking Water Health Advisories for 16 Pesticides

--p. 67, 68

Drinking Water Health Advisories for 25 Organic Contaminants

--p. 68, 69

Drinking Water Health Advisories for 50 Pesticides

--p. 71, 72

Drum Reconditioning Industry -

-Preliminary Data Summary for the Drum Reconditioning Industry

--p. 34

Dynamic Toxics Waste Load Allocation Model (DYNTOX) User's Manual

--p. 73

E. Coli -

-Enumeration Methods for E. Coli and Enterococci

--p. 87

-Test Methods for Escherichia Coli and Enterococci in Water by the Membrane Filter Procedure

--p. 80

Economic Consideration in Water Quality Standards

--p. 87

The Effects of Discharges from Limestone Quarries on Water Quality and Aquatic Biomonitoring: Report to Congress

--p. 92

**Electrical and Electronic Components -**

**-Development Document for Effluent Limitations Guidelines and Standards for the Electrical and Electronic Components Point Source Category**

**--p. 14, 15**

**-Economic Impact Analysis of Effluent Limitations Guidelines and Standards for the Electrical and Electronic Components Industry**

**--p. 31**

**Electroplating -**

**-Development Document for Effluent Limitations Guidelines and New Source Performance Standards for the Copper, Nickel, Chromium, and Zinc Segments of the Electroplating Point Source Category**

**--p. 4**

**-Development Document for Existing Source Pretreatment Standards for the Electroplating Point Source Category**

**--p. 38**

**-Economic Analysis of Effluent Guidelines for the Copper, Nickel, Chromium, and Zinc Segments of the Electroplating Industry**

**--p. 27**

**-Economic Analysis of Existing Source Pretreatment Standards for the Electroplating Point Source Category**

**--p. 38**

**-Guidance Manual for Electroplating and Metal Finishing Pretreatment Standards**

**--p. 38**

**Endosulfan -**

**-Ambient Water Quality Criteria for Endosulfan**

**--p. 58**

**Endothall Health Advisory**

**--p. 71**

**Endrin -**

**-Ambient Water Quality Criteria for Endrin**

**--p. 58**

**-Endrin Health Advisory**

**--p. 68**

**-Sediment Quality Criteria for the Protection of Benthic Organisms: Endrin**

**--p. 66**

**Enterococci -**

**(see "E. coli")**

**Enumeration Methods for E. Coli and Enterococci**

**--p. 87**

**Environmental Monitoring Methods Index (EMMI)**

**--p. 94**

**EPA's Review and Approval Procedure for State Submitted TMDLs/WLAs**

**--p. 73**

**Epichlorohydrin Health Advisory**

**--p. 68**

**Erosion and Sediment Control Handbook**

**--p. 82**

Escherichia Coli -  
(see "E. coli")

Ethane -  
-Ambient Water Quality Criteria for Chlorinated Ethanes  
--p. 55

Ethanol -  
-Multimedia Technical Support Document for the Ethanol-for-Fuel Industry  
--p. 34

Ether -  
-bis-(2-chloroisopropyl) Ether Health Advisory  
--p. 67

Ethylbenzene -  
-Ambient Water Quality Criteria for Ethylbenzene  
--p. 58  
-Ethylbenzene Health Advisory  
--p. 68

Ethylene Dibromide Health Advisory  
--p. 68

Ethylene Glycol Health Advisory  
--p. 68

Ethylene Thiourea Health Advisory  
--p. 71

Explosives Manufacturing -  
-Development Document for Effluent Limitations Guidelines and New Source Performance Standards for the  
Explosives Manufacturing Point Source Category  
--p. 5

Fact Sheet: An Introduction to the Great Lakes Water Quality Initiative  
--p. 88

Fact Sheet: Proposed Great Lakes Water Quality Guidance  
-Antidegradation Requirements  
--p. 88  
-Costs and Benefits  
--p. 88  
-Implementation  
--p. 88  
-Indian Tribes  
--p. 88  
-Overview  
--p. 89  
-Water Quality Criteria  
--p. 89

Fact Sheet: Sewage Sludge Use and Disposal Rule (40 CFR Part 503)  
--p. 85

Fact Sheet: Water Chlorination

--p. 92

Fate of Priority Pollutants in Publicly Owned Treatment Works

--p. 38

Feedlots -

-Development Document for Effluent Limitations Guidelines and New Source Performance Standards for the Feedlots Point Source Category

--p. 5

-Economic Analysis of Effluent Guidelines for the Large Scale Segment of the Feedlots Industry

--p. 28

Fenamiphos Health Advisory

--p. 71

Ferroalloy Industry

-Development Document for Effluent Limitations Guidelines and New Source Performance Standards for the Calcium Carbide Segment of the Ferroalloy Manufacturing Point Source Category

--p. 3

-Development Document for Effluent Limitations Guidelines and New Source Performance Standards for the Smelting and Slag Processing Segments of the Ferroalloy Manufacturing Point Source Category

--p. 11

-Economic Analysis of Effluent Guidelines for the Ferroalloys Industry

--p. 27

Fertilizer -

-Development Document for Effluent Limitations Guidelines and New Source Performance Standards for the Basic Fertilizer Chemicals Segment of the Fertilizer Manufacturing Point Source Category

--p. 2

-Development Document for Effluent Limitations Guidelines and New Source Performance Standards for the Formulated Fertilizer Segment of the Fertilizer Manufacturing Point Source Category

--p. 6

-Economic Analysis of Effluent Guidelines for the Fertilizer Industry

--p. 27

Fluometuron Health Advisory

--p. 72

Fluoranthene -

-Ambient Water Quality Criteria for Fluoranthene

--p. 59

-Sediment Quality Criteria for the Protection of Benthic Organisms: Fluoranthene

--p. 66

Fonofos Health Advisory

--p. 72

Freon

-Preliminary Report of EPA Efforts to Replace Freon for the Determination of Oil and Grease

--p. 80



#### Fruits and Vegetables

- Development Document for Effluent Limitations Guidelines and New Source Performance Standards for the Apple, Citrus, and Potato Processing Segments of the Canned and Preserved Fruits and Vegetables Point Source Category --p. 2
- Development Document for Effluent Limitations Guidelines and New Source Performance Standards for the Fruits, Vegetables, and Specialties Segments of the Canned and Preserved Fruits and Vegetables Point Source Category --p. 6
- Economic Analysis of Effluent Guidelines for the Apple, Citrus, and Potato Processing Segments of the Canned and Preserved Fruits and Vegetables Industry --p. 26

#### Furans -

- Method 1613: Tetra-through Octa-Chlorinated Dioxins and Furans by Isotope Dilution HRGC/HRMS Revision A --p. 79

#### Gasses -

- Quality Criteria for Water - 1976 --p. 64

- General Provisions - Water Quality Standards Criteria Summaries: A Compilation of State/Federal Criteria --p. 49

#### Glass Manufacturing -

- Development Document for Effluent Limitations Guidelines and New Source Performance Standards for the Flat Glass Segment of the Glass Manufacturing Point Source Category --p. 5
- Development Document for Effluent Limitations Guidelines and New Source Performance Standards for the Insulation Fiberglass Manufacturing Segment of the Glass Manufacturing Point Source Category --p. 6
- Development Document for Effluent Limitations Guidelines and New Source Performance Standards for the Pressed and Blown Glass Segments of the Glass Manufacturing Point Source Category --p. 10
- Economic Analysis of Effluent Guidelines for the Flat Glass Segment of the Glass Manufacturing Industry --p. 27
- Economic Analysis of Effluent Guidelines for the Insulation Fiberglass Segment of the Glass Manufacturing Industry --p. 27

#### Glyphosate Health Advisory

--p. 72

#### Grain Mills -

- Development Document for Effluent Limitations Guidelines and New Source Performance Standards for the Animal Feed, Breakfast Cereal, and Wheat Starch Segments of the Grain Mills Point Source Category --p. 2
- Development Document for Effluent Limitations Guidelines and New Source Performance Standards for the Grain Processing Segment of the Grain Mills Point Source Category --p. 6
- Economic Analysis of Effluent Guidelines for the Grain Processing Segment of the Grain Mills Industry --p. 27
- Economic Impact Analysis of Effluent Guidelines for the Animal Feed, Breakfast Cereal, and Wheat Starch Segments of the Grain Mills Industry --p. 30

Grease -

-Preliminary Report of EPA Efforts to Replace Freon for the Determination of Oil and Grease

--p. 80

-Quality Criteria for Water - 1976

--p. 64

Great Lakes Water Quality Guidance Docket Index

--p. 89

Great Lakes Water Quality Initiative Criteria Documents for the Protection of Aquatic Life in Ambient Water

--p. 89

Great Lakes Water Quality Initiative Criteria Documents for the Protection of Human Health

--p. 89

Great Lakes Water Quality Initiative Criteria Documents for the Protection of Wildlife: DDT, Mercury, 2,3,7,8-TCDD, PCBs

--p. 89

Great Lakes Water Quality Initiative Technical Support Document for Human Health Criteria and Values

--p. 89

Great Lakes Water Quality Initiative Technical Support Document for the Procedure to Determine Bioaccumulation Factors

--p. 89

Guidance for Sampling of and Analyzing for Organic Contaminants in Sediments

--p. 66

Guidance for State Implementation of Water Quality Standards for CWA Section 303 (c)(2)(B)

--p. 40

Guidance for State Water Monitoring and Waste Load Allocation Programs

--p. 73

Guidance for Water Quality-Based Decisions: The TMDL Process

--p. 73

Guidance Manual for Implementing Total Toxic Organics (TTO) Pretreatment Standards

--p. 39

Guidance on Evaluation, Resolution, and Documentation of Analytical Problems Associated with Compliance Monitoring

--p. 79

Guidance on Water Quality Standards and 401 Certification Programs Administered by Indian Tribes

--p. 40

Guidelines Establishing Test Procedures for the Analysis of Pollutants Under the Clean Water Act

--p. 79

Guidelines for Deriving Numerical National Water Quality Criteria for the Protection of Aquatic Organisms and Their Uses

--p. 63

**Gum and Wood Chemicals Manufacturing -**

**-Development Document for Effluent Limitations Guidelines and Standards for the Gum and Wood Chemicals Manufacturing Point Source Category**

**--p. 15**

**Guthion -**

**-Quality Criteria for Water - 1976**

**--p. 64**

**Haloethers -**

**-Ambient Water Quality Criteria for Haloethers**

**--p. 59**

**Halomethanes -**

**-Ambient Water Quality Criteria for Halomethanes**

**--p. 59**

**Handbook: Stream Sampling for Waste Load Allocations**

**--p. 73**

**Hardness**

**-Quality Criteria for Water - 1976**

**--p. 64**

**Hazardous Waste Treatment Industry -**

**-Preliminary Data Summary for the Hazardous Waste Treatment Industry**

**--p. 34**

**Health Effects Criteria for Fresh Recreational Waters**

**--p. 40**

**Health Effects Criteria for Marine Recreational Waters**

**--p. 41**

**Heptachlor -**

**-Ambient Water Quality Criteria for Heptachlor**

**--p. 59**

**-Heptachlor and Heptachlor Epoxide Health Advisory**

**--p. 68**

**Herbicides -**

**-Determination of Chlorinated Herbicides in Industrial and Municipal Wastewater: Method 615**

**--p. 77**

**-Quality Criteria for Water - 1976**

**--p. 64**

**Hexachlorobenzene -**

**-Ambient Aquatic Life Water Quality Criteria for Hexachlorobenzene**

**--p. 52**

**-Hexachlorobenzene Health Advisory**

**--p. 68**

Hexachlorobutadiene -

-Ambient Water Quality Criteria for Hexachlorobutadiene

--p. 59

-Hexachlorobutadiene Health Advisory

--p. 67

Hexachlorocyclohexane -

-Ambient Water Quality Criteria for Hexachlorocyclohexane

--p. 59

Hexachlorocyclopentadiene -

-Ambient Water Quality Criteria for Hexachlorocyclopentadiene

--p. 59

Hexachloroethane -

-Hexachloroethane Health Advisory

--p. 70

Hexachlorophene -

-Determination of Hexachlorophene and Dichlorophene in Industrial and Municipal Wastewater

--p. 78

Hexahydro-1,3,5,7-tetranitro-1,3,5-triazine (RDX) Health Advisory

--p. 70

Hexane -

-n-Hexane Health Advisory

--p. 69

Hexazinane Health Advisory

--p. 72

Hospitals -

-Development Document for Effluent Limitations Guidelines and New Source Performance Standards for the Hospitals Point Source Category

--p. 6

-Preliminary Data Summary for the Hospitals Point Source Category

--p. 34

Indian Tribes -

-Amendments to the Water Quality Standards Regulation that Pertains to Standards on Indian Reservations; Final Rule

--p. 40

-Fact Sheet: Proposed Great Lakes Water Quality Guidance - Indian Tribes

--p. 88

-Guidance on Water Quality Standards and 401 Certification Programs Administered by Indian Tribes

--p. 40

-Reference Guide to Water Quality Standards for Indian Tribes

--p. 41

-Water Quality Standards on Indian Lands

--p. 87

**Ink Formulating -**

- Development Document for Effluent Limitations Guidelines, New Source Performance Standards, and Pretreatment Standards for the Ink Formulating Point Source Category  
--p. 20

**Inorganic Chemicals Industry -**

- Development Document for Effluent Limitations Guidelines and New Source Performance Standards for the Major Inorganic Products Segment of the Inorganic Chemicals Manufacturing Point Source Category  
--p. 7
- Development Document for Effluent Limitations Guidelines and New Source Performance Standards for the Major Organic Products Segment of the Inorganic Chemicals Manufacturing Point Source Category  
--p. 7
- Development Document for Effluent Limitations Guidelines, New Source Performance Standards, and Pretreatment Standards for the Inorganic Chemicals Manufacturing Point Source Category  
--p. 21
- Economic Analysis of Effluent Guidelines for the Inorganic Chemicals Industry  
--p. 27
- Economic Impact Analysis of Effluent Limitations Guidelines and Standards for the Inorganic Chemicals Industry  
--p. 31
- Economic Impact Analysis of Pollution Control Technologies for Segments of the Inorganic Chemicals Manufacturing Industry  
--p. 33
- Treatability Studies for the Inorganic Chemicals Manufacturing Point Source Category  
--p. 37

**Inorganics -**

- Drinking Water Health Advisories for 7 Inorganics and Legionella  
--p. 69

**Interim Guidance on Interpretation and Implementation of Aquatic Life Criteria for Metals**

--p. 64

**Interim Protocol for the Automated Analysis of Semivolatile Organic Compounds by Gas Chromatography/Fourier Transform Infrared (GC/FT-IR) Spectrometry**

--p. 79

**Intermittent Streams - Water Quality Standards Criteria Summaries: A Compilation of State/Federal Criteria**

--p. 49

**Introduction to Water Quality Standards**

--p. 41, 87

**Iron -**

- Iron - Water Quality Standards Criteria Summaries: A Compilation of State/Federal Criteria  
--p. 49
- Quality Criteria for Water - 1976  
--p. 64

**Iron and Steel Industry -**

- Development Document for Effluent Limitations Guidelines, New Source Performance Standards, and Pretreatment Standards for the Iron and Steel Manufacturing Point Source Category  
--p. 21, 22, 23

- Development Document for Effluent Limitations Guidelines, New Source Performance Standards, and Pretreatment Standards for the Steel Making Segment of the Iron and Steel Manufacturing Point Source Category  
--p. 25
- Economic Analysis of Effluent Guidelines for the Integrated Iron and Steel Industry  
--p. 28
- Economic Analysis of Effluent Limitations Guidelines, New Source Performance Standards, and Pretreatment Standards for the Iron and Steel Manufacturing Point Source Category  
--p. 29
- Economic Assessment of the Benefits of the Effluent Limitations Guidelines for Iron and Steel Manufacturing  
--p. 29
- Guidance Manual for Iron and Steel Manufacturing Pretreatment Standards  
--p. 39

#### Isophorone -

- Ambient Water Quality Criteria for Isophorone  
--p. 59

#### Isopropyl Methylphosphonic Acid Health Advisory

--p. 70

#### Kinoprene -

- C, N, and O Compounds - Cycloprate, Kinoprene, Methoprene, and Resmethrin: Method 616  
--p. 77

#### Laundries -

- Development Document for Effluent Limitations Guidelines and Standards for the Auto and Other Laundries Point Source Category  
--p. 13
- Guidance Document for Effluent Discharges from the Auto and Other Laundries Point Source Category  
--p. 33
- Preliminary Data Summary for the Industrial Laundries Point Source Category  
--p. 34
- Preliminary Data Summary for the Transportation Equipment Cleaning Industry  
--p. 35

#### Lead -

- Ambient Water Quality Criteria for Lead  
--p. 60
- Lead - Water Quality Standards Criteria Summaries: A Compilation of State/Federal Criteria  
--p. 49

#### Leather Tanning and Finishing -

- Development Document for Effluent Limitations Guidelines and Standards for the Leather Tanning and Finishing Point Source Category  
--p. 15
- Economic Analysis of Effluent Guidelines for the Leather Tanning and Finishing Industry  
--p. 28
- Economic Impact Analysis of Effluent Limitations Guidelines and Standards for the Leather Tanning Industry  
--p. 31
- Guidance Manual for Leather Tanning and Finishing Pretreatment Standards  
--p. 39
- Supplement to the Development Document for Effluent Limitations Guidelines and Standards for the Leather Tanning and Finishing Point Source Category  
--p. 37

Legionella -

-Drinking Water Health Advisories for 7 Inorganics and Legionella

--p. 69

Limestone Quarries -

-The Effects of Discharges from Limestone Quarries on Water Quality and Aquatic Biomonitoring: Report to Congress

--p. 92

Lindane Health Advisory

--p. 68

List of Lists -

(see "Environmental Monitoring Methods Index")

Machinery Manufacturing and Rebuilding Industry -

-Preliminary Data Summary for the Machinery Manufacturing and Rebuilding Industry

--p. 34

Malathion -

-Quality Criteria for Water - 1976

--p. 64

Maleic Hydrazide Health Advisory

--p. 72

Managing Contaminated Sediments: EPA Decision-Making Processes

--p. 82

Manganese -

-Quality Criteria for Water - 1976

--p. 64

Meat Industry -

-Development Document for Effluent Limitations Guidelines and New Source Performance Standards for the Red Meat Processing Segment of the Meat Product and Rendering Processing Point Source Category

--p. 10

-Development Document for Effluent Limitations Guidelines and New Source Performance Standards for the Renderer Segment of the Meat Products and Rendering Processing Point Source Category

--p. 10

-Economic Analysis of Effluent Guidelines for the Meat Packing Industry

--p. 28

-Supplement to the Development Document for Effluent Limitations Guidelines and New Source Performance Standards for the Renderer Segment of the Meat Products and Rendering Point Source Category

--p. 37

Mercaptobenzothiazole -

-Determination of Mercaptobenzothiazole in Industrial and Municipal Wastewater

--p. 78

Mercury -

-Ambient Water Quality Criteria for Mercury

--p. 60

-Great Lakes Water Quality Initiative Criteria Documents for the Protection of Wildlife: DDT, Mercury, 2,3,7,8-TCDD, PCBs

--p. 89

-Mercury Water Quality Standards Criteria Summaries: A Compilation of State/Federal Criteria

--p. 49

-Mercury Health Advisory

--p. 69

#### Metal Finishing -

-Development Document for Effluent Limitations Guidelines and Standards for the Metal Finishing Point Source Category

--p. 15

-Economic Analysis of Effluent Limitations Guidelines and Standards for the Metal Finishing Industry

--p. 29

-Economic Impact Analysis of Effluent Limitations Guidelines and Standards for the Metal Finishing Industry

--p. 32

-Guidance Manual for Electroplating and Metal Finishing Pretreatment Standards

--p. 38

#### Metal Molding and Casting (Foundries)

-Development Document for Effluent Limitations Guidelines and Standards for the Metal Molding and Casting (Foundries) Point Source Category

--p. 15, 16

-Economic Impact Analysis of Effluent Limitations Guidelines and Standards for the Metal Molding and Casting (Foundries) Industry

--p. 32

#### Metal Powders -

(see "Nonferrous Metals")

#### Metals -

-Interim Guidance on Interpretation and Implementation of Aquatic Life Criteria for Metals

--p. 64

-Synopsis of Water Effect Ratios for Heavy Metals as Derived for Site-Specific Water Quality Criteria

--p. 64

#### Method 200.7 -

-Guidelines Establishing Test Procedures for the Analysis of Pollutants Under the Clean Water Act

--p. 79

#### Method 601 -

-Guidelines Establishing Test Procedures for the Analysis of Pollutants Under the Clean Water Act

--p. 79

#### Method 602 -

-Guidelines Establishing Test Procedures for the Analysis of Pollutants Under the Clean Water Act

--p. 79

#### Method 603 -

-Guidelines Establishing Test Procedures for the Analysis of Pollutants Under the Clean Water Act

--p. 79



**Method 604 -**

**-Guidelines Establishing Test Procedures for the Analysis of Pollutants Under the Clean Water Act**

**--p. 79**

**-Methods for the Determination of Nonconventional Pesticides in Municipal and Industrial Wastewater**

**--p. 80**

**Method 605 -**

**-Guidelines Establishing Test Procedures for the Analysis of Pollutants Under the Clean Water Act**

**--p. 79**

**Method 606 -**

**-Guidelines Establishing Test Procedures for the Analysis of Pollutants Under the Clean Water Act**

**--p. 79**

**Method 607 -**

**-Guidelines Establishing Test Procedures for the Analysis of Pollutants Under the Clean Water Act**

**--p. 79**

**Method 608 -**

**-Guidelines Establishing Test Procedures for the Analysis of Pollutants Under the Clean Water Act**

**--p. 79**

**-Methods for the Determination of Nonconventional Pesticides in Municipal and Industrial Wastewater**

**--p. 80**

**Method 609 -**

**-Guidelines Establishing Test Procedures for the Analysis of Pollutants Under the Clean Water Act**

**--p. 79**

**Method 610 -**

**-Guidelines Establishing Test Procedures for the Analysis of Pollutants Under the Clean Water Act**

**--p. 79**

**Method 611**

**-Guidelines Establishing Test Procedures for the Analysis of Pollutants Under the Clean Water Act**

**--p. 79**

**Method 612 -**

**-Guidelines Establishing Test Procedures for the Analysis of Pollutants Under the Clean Water Act**

**--p. 79**

**Method 613 -**

**-Guidelines Establishing Test Procedures for the Analysis of Pollutants Under the Clean Water Act**

**--p. 79**

**Method 614 -**

**-Determination of Organophosphorus Pesticides in Industrial and Municipal Wastewater**

**--p. 78**

**-Methods for the Determination of Nonconventional Pesticides in Municipal and Industrial Wastewater**

**--p. 80**

**Method 615 -**

**-Determination of Chlorinated Herbicides in Industrial and Municipal Wastewater**

**--p. 77**

-Methods for the Determination of Nonconventional Pesticides in Municipal and Industrial Wastewater  
--p. 80

Method 616 -

-C, N, and O Compounds - Cycloprate, Kinophrene, Methoprene, and Resmethrin

--p. 77

-Methods for the Determination of Nonconventional Pesticides in Municipal and Industrial Wastewater

--p. 80

Method 617 -

-Determination of Organohalide Pesticides and PCBs in Industrial and Municipal Wastewater

--p. 78

-Methods for the Determination of Nonconventional Pesticides in Municipal and Industrial Wastewater

--p. 80

Method 618 -

-Methods for the Determination of Nonconventional Pesticides in Municipal and Industrial Wastewater

--p. 80

Method 619 -

-Determination of Triazine Pesticides in Industrial and Municipal Wastewater

--p. 79

-Methods for the Determination of Nonconventional Pesticides in Municipal and Industrial Wastewater

--p. 80

Method 620 -

-Methods for the Determination of Nonconventional Pesticides in Municipal and Industrial Wastewater

--p. 80

Method 622 -

-Determination of Organophosphorus Pesticides in Industrial and Municipal Wastewater

--p. 78

-Methods for the Determination of Nonconventional Pesticides in Municipal and Industrial Wastewater

--p. 80

Method 624 -

-Guidelines Establishing Test Procedures for the Analysis of Pollutants Under the Clean Water Act

--p. 79

Method 625 -

-Guidelines Establishing Test Procedures for the Analysis of Pollutants Under the Clean Water Act

--p. 79

Method 627 -

-Determination of Dinitroaniline Pesticides in Industrial and Municipal Wastewater

--p. 78

-Methods for the Determination of Nonconventional Pesticides in Municipal and Industrial Wastewater

--p. 80

Method 629 -

-Determination of Cyanazine in Industrial and Municipal Wastewater

--p. 77

-Methods for the Determination of Nonconventional Pesticides in Municipal and Industrial Wastewater

--p. 80

**Method 630 -**

**-Determination of Dithiocarbamate Pesticides in Industrial and Industrial Wastewater**

**--p. 78**

**-Methods for the Determination of Nonconventional Pesticides in Municipal and Industrial Wastewater**

**--p. 80**

**Method 631 -**

**-Determination of Benomyl and Carbendazim in Industrial and Municipal Wastewater**

**--p. 77**

**-Methods for the Determination of Nonconventional Pesticides in Municipal and Industrial Wastewater**

**--p. 80**

**Method 632 -**

**-Determination of Carbamate and Urea Pesticides in Industrial and Municipal Wastewater**

**--p. 77**

**-Methods for the Determination of Nonconventional Pesticides in Municipal and Industrial Wastewater**

**--p. 80**

**Method 633 -**

**-Determination of Organonitrogen Pesticides in Industrial and Municipal Wastewater**

**--p. 78**

**-Methods for the Determination of Nonconventional Pesticides in Municipal and Industrial Wastewater**

**--p. 80**

**Method 634 -**

**-Methods for the Determination of Nonconventional Pesticides in Municipal and Industrial Wastewater**

**--p. 80**

**Method 635 -**

**-Methods for the Determination of Nonconventional Pesticides in Municipal and Industrial Wastewater**

**--p. 80**

**Method 636 -**

**-Methods for the Determination of Nonconventional Pesticides in Municipal and Industrial Wastewater**

**--p. 80**

**Method 637 -**

**-Methods for the Determination of Nonconventional Pesticides in Municipal and Industrial Wastewater**

**--p. 80**

**Method 638 -**

**-Methods for the Determination of Nonconventional Pesticides in Municipal and Industrial Wastewater**

**--p. 80**

**Method 639 -**

**-Methods for the Determination of Nonconventional Pesticides in Municipal and Industrial Wastewater**

**--p. 80**

**Method 640 -**

**-Methods for the Determination of Nonconventional Pesticides in Municipal and Industrial Wastewater**

**--p. 80**

**Method 641**

-Methods for the Determination of Nonconventional Pesticides in Municipal and Industrial Wastewater  
--p. 80

**Method 642 -**

-Methods for the Determination of Nonconventional Pesticides in Municipal and Industrial Wastewater  
--p. 80

**Method 643 -**

-Methods for the Determination of Nonconventional Pesticides in Municipal and Industrial Wastewater  
--p. 80

**Method 644 -**

-Methods for the Determination of Nonconventional Pesticides in Municipal and Industrial Wastewater  
--p. 80

**Method 645 -**

-Methods for the Determination of Nonconventional Pesticides in Municipal and Industrial Wastewater  
--p. 80

**Method 646 -**

-Methods for the Determination of Nonconventional Pesticides in Municipal and Industrial Wastewater  
--p. 80

**Method 1613**

-Method 1613: Tetra-through Octa-Chlorinated Dioxins and Furans by Isotope Dilution HRGC/Hrms Revision A  
--p. 79  
-Water Programs; Guidelines Establishing Test Procedures for the Analysis of Pollutants  
--p. 81

**Method 1624 -**

-Guidelines Establishing Test Procedures for the Analysis of Pollutants Under the Clean Water Act  
--p. 79  
-Method 1624: Volatile Organic Compounds by Isotope Dilution GCMS  
--p. 80

**Method 1625 -**

-Guidelines Establishing Test Procedures for the Analysis of Pollutants Under the Clean Water Act  
--p. 79  
-Method 1625: Semivolatile Organic Compounds by Isotope Dilution GCMS  
--p. 80

**Method 1651 -**

-Methods for the Determination of Diesel, Mineral, and Crude Oils in Offshore Oil and Gas Industry Discharges  
--p. 80

**Method 1654 -**

-Methods for the Determination of Diesel, Mineral, and Crude Oils in Offshore Oil and Gas Industry Discharges  
--p. 80

**Method 1656 -**

-Methods for the Determination of Nonconventional Pesticides in Municipal and Industrial Wastewater  
--p. 80

**Method 1657 -**

**-Methods for the Determination of Nonconventional Pesticides in Municipal and Industrial Wastewater**  
--p. 80

**Method 1658 -**

**-Methods for the Determination of Nonconventional Pesticides in Municipal and Industrial Wastewater**  
--p. 80

**Method 1659 -**

**-Methods for the Determination of Nonconventional Pesticides in Municipal and Industrial Wastewater**  
--p. 80

**Method 1660 -**

**-Methods for the Determination of Nonconventional Pesticides in Municipal and Industrial Wastewater**  
--p. 80

**Method 1661 -**

**-Methods for the Determination of Nonconventional Pesticides in Municipal and Industrial Wastewater**  
--p. 80

**Method 1662 -**

**-Methods for the Determination of Diesel, Mineral, and Crude Oils in Offshore Oil and Gas Industry Discharges**  
--p. 80

**Method 1663 -**

**-Methods for the Determination of Diesel, Mineral, and Crude Oils in Offshore Oil and Gas Industry Discharges**  
--p. 80

**Methods for the Determination of Diesel, Mineral, and Crude Oils in Offshore Oil and Gas Industry Discharges:**  
**Methods 1651A, 1654A, 1662, 1663**

--p. 80

**Methods for the Determination of Nonconventional Pesticides in Municipal and Industrial Wastewater: Methods**  
**604.1, 608.1, 608.2, 614, 614.1, 615-620, 622, 622.1, 627, 629, 630, 630.1, 631, 632, 632.1, 633, 633.1, 634-**  
**646, 1656-1661**

--p. 80

**Methomyl Health Advisory**

--p. 72

**Methoprene -**

**-C, N, and O Compounds - Cycloprate, Kinoprene, Methoprene, and Resmethrin: Method 616**

--p. 77

**Methoxychlor -**

**-Methoxychlor Health Advisory**

--p. 68

**-Quality Criteria for Water - 1976**

--p. 64

**Methyl Ethyl Ketone Health Advisory**

--p. 69

Methyl Parathion Health Advisory

--p. 72

Methylphenoxy -

-4-chloro-Methylphenoxy (MCPA) Health Advisory

--p. 72

Metolachlor Health Advisory

--p. 72

Metribuzin Health Advisory

--p. 72

Mineral Mining and Processing -

-Development Document for Effluent Limitations Guidelines and New Source Performance Standards for the Mineral Mining and Processing Point Source Category

--p. 7

-Development Document for Effluent Limitations Guidelines and New Source Performance Standards for the Minerals for the Construction Industry - Vol. I - Mineral Mining and Processing

--p. 7

Mirex -

-Quality Criteria for Water - 1976

--p. 64

Mixing Zones - Water Quality Standards Criteria Summaries: A Compilation of State/Federal Criteria

--p. 49

Munitions -

-Drinking Water Health Advisories for Munitions

--p. 69, 70

Naphthalene -

-Ambient Water Quality Criteria for Chlorinated Naphthalenes

--p. 55

-Ambient Water Quality Criteria for Naphthalene

--p. 60

-Naphthalene Health Advisory

--p. 67

The National Dioxin Study - Tiers 3,5,6, and 7

--p. 92

National Perspective on Sediment Quality

--p. 82

National Sewage Sludge Survey -

-Analytical Methods for the National Sewage Sludge Survey

--p. 77

-Data Element Dictionary 1988 Sewage-Sludge Use and Disposal: Questionnaire Data Base

--p. 85

-National Sewage-Sludge Survey - Facility Analytical Questionnaire Response: Facility Characteristics

--p. 85

- National Sewage-Sludge Survey - Facility Analytical Questionnaire Response: Facility Use and Disposal Practices  
--p. 85
- National Sewage-Sludge Survey - Facility Analytical Results  
--p. 85, 86
- National Sewage-Sludge Survey - SAS Transport Version  
--p. 94
- Sampling Procedures and Protocols for the National Sewage Sludge Survey  
--p. 80

National Study of Chemical Residues in Fish  
--p. 84

- Nickel -
- Ambient Water Quality Criteria for Nickel  
--p. 60
  - Nickel Health Advisory  
--p. 69

- Nitrate/Nitrite -
- Nitrogen-Ammonia/Nitrate/Nitrite - Water Quality Standards Criteria Summaries: A Compilation of State/Federal Criteria  
--p. 49
  - Nitrate/Nitrite Health Advisory  
--p. 69
  - Quality Criteria for Water - 1976  
--p. 64

- Nitrobenzene -
- Ambient Water Quality Criteria for Nitrobenzene  
--p. 60

Nitrocellulose Health Advisory  
--p. 70

- Nitrogen -
- Nitrogen-Ammonia/Nitrate/Nitrite - Water Quality Standards Criteria Summaries: A Compilation of State/Federal Criteria  
--p. 49

Nitroguanidine (NQ) Health Advisory  
--p. 70

- Nitrophenols-
- Ambient Water Quality Criteria for Nitrophenols  
--p. 61

- Nitrosamines -
- Ambient Water Quality Criteria for Nitrosamines  
--p. 61

- Nonferrous Metals Industry -
- Aluminum, Copper, and Nonferrous Metals Forming and Metal Powders Pretreatment Standards: A Guidance Manual  
--p. 38

- Development Document for Effluent Limitations Guidelines and Standards for the Bauxite Refining Subcategory of the Aluminum Segment of the Nonferrous Metals Manufacturing Point Source Category  
--p. 13
- Development Document for Effluent Limitations Guidelines and Standards for the Nonferrous Metals Forming and Metal Powders Point Source Category  
--p. 16
- Development Document for Effluent Limitations Guidelines and Standards for the Nonferrous Metals Manufacturing Point Source Category  
--p. 16, 17, 18, 19
- Development Document for Effluent Limitations Guidelines and Standards for the Primary Aluminum Smelting Subcategory of the Aluminum Segment of the Nonferrous Metals Manufacturing Point Source Category  
--p. 20
- Development Document for Effluent Limitations Guidelines and Standards for the Secondary Aluminum Smelting Subcategory of the Aluminum Segment of the Nonferrous Metals Manufacturing Point Source Category  
--p. 20
- Economic Analysis of Effluent Guidelines for the Aluminum Segment of the Nonferrous Metals Industry  
--p. 26
- Economic Impact Analysis of Effluent Limitations Guidelines and Standards for the Nonferrous Metals Manufacturing Industry  
--p. 32

#### Nonpoint Source Controls and Water Quality Standards

--p. 51

#### Octahydro-1,3,5,7-tetranitro-1,3,5,7-tetrazocine (HMX)

--p. 70

#### Office of Science and Technology: Working to Ensure Abundant, Safe, and Clean Water Resources

--p. 92

#### Oil

- Methods for the Determination of Diesel, Mineral, and Crude Oils in Offshore Oil and Gas Industry Discharges: Methods 1651A, 1654A, 1662, 1663  
--p. 80
- Preliminary Report of EPA Efforts to Replace Freon for the Determination of Oil and Grease  
--p. 80
- Quality Criteria for Water - 1976  
--p. 64

#### Oil and Gas Industry -

- Assessment of Environmental Fate and Effects of Discharges from Offshore Oil and Gas Operations  
--p. 1
- Cost-Effectiveness Analysis of Effluent Limitations Guidelines and Standards for the Offshore Oil and Gas Industry  
--p. 1
- Development Document for Effluent Limitations Guidelines and New Source Performance Standards for the Offshore Subcategory of the Oil and Gas Extraction Point Source Category  
--p. 7, 8
- Economic Benefits of Effluent Limitations Guidelines and Standards for the Offshore Oil and Gas Industry  
--p. 30
- Economic Impact Analysis of Effluent Limitations Guidelines and Standards of Performance for the Offshore Oil and Gas Industry  
--p. 33



- Methods for the Determination of Diesel, Mineral, and Crude Oils in Offshore Oil and Gas Industry Discharges: Methods 1651A, 1654A, 1662, 1663  
--p. 80
- Oil and Gas Extraction Category; (Offshore Subcategory Effluent Guidelines and New Source Performance Standards; Final Rule  
--p. 34
- Preliminary Data Summary for the Coastal, Onshore, and Stripper Subcategories of the Oil and Gas Extraction Point Source Category  
--p. 34
- Preliminary Data Summary for the Used Oil Reclamation and Re-Refining Industry  
--p. 35
- Regulatory Impact Analysis of Effluent Limitations Guidelines and Standards for the Offshore Oil and Gas Industry  
--p. 36

#### Ore Mining and Dressing -

- Development Document for Effluent Limitations Guidelines and New Source Performance Standards for the Gold Placer Mine Subcategory of the Ore Mining and Dressing Point Source Category  
--p. 6
- Development Document for Effluent Limitations Guidelines and New Source Performance Standards for the Ore Mining and Dressing Point Source Category  
--p. 8
- Economic Impact Analysis of Effluent Limitations Guidelines and Standards for the Gold Placer Mining Segment of the Ore Mining and Dressing Industry  
--p. 31

#### Organic Chemicals Industry -

(see "Organic Chemicals, Plastics, and Synthetic Fibers")

#### Organic Chemicals, Plastics, and Synthetic Fibers -

- Development Document for Effluent Limitations Guidelines and New Source Performance Standards for the Major Organic Products Segment of the Organic Chemicals Manufacturing Point Source Category  
--p. 7
- Development Document for Effluent Limitations Guidelines and New Source Performance Standards for the Organic Chemicals, Plastics, and Synthetic Fibers Industry Point Source Category  
--p. 8, 9
- Development Document for Effluent Limitations Guidelines and New Source Performance Standards for the Synthetic Polymer Segment of the Plastics and Synthetic Materials Manufacturing Point Source Category  
--p. 11
- Development Document for Effluent Limitations Guidelines and New Source Performance Standards for the Synthetic Resins Segment of the Plastics and Synthetic Materials Manufacturing Point Source Category  
--p. 11
- Economic Analysis of Effluent Guidelines for the Major Organic Products Segment of the Organic Chemicals Industry  
--p. 28
- Economic Impact Analysis of Effluent Limitations Guidelines and Standards for the Organic Chemicals, Plastics, and Synthetic Fibers Industry  
--p. 32
- Re-Evaluation of the Economic Impact Analysis of Effluent Limitations Guidelines for the Organic Chemicals, Plastics, and Synthetic Fibers Industry  
--p. 35
- Re-Evaluation of the Economic Impact Analysis of Effluent Limitations Guidelines for the Organic Chemicals, Plastics, and Synthetic Fibers Industry Using Revised Compliance Costs  
--p. 36

-Supplement to the Development Document for Effluent Limitations Guidelines and New Source Performance Standards for the Organic Chemicals, Plastics, and Synthetic Fibers Point Source Category  
--p. 36

**Organics -**

-Drinking Water Health Advisories for 15 Volatile Organic Chemicals (VOCs)  
--p. 67  
-Drinking Water Health Advisories for 25 Organic Contaminants  
--p. 68, 69  
-Guidance for Sampling of and Analyzing for Organic Contaminants in Sediments  
--p. 66  
-Guidance Manual for Implementing Total Toxic Organics (TTO) Pretreatment Standards  
--p. 39  
-Interim Protocol for the Automated Analysis of Semivolatile Organic Compounds by Gas Chromatography/Fourier Transform Infrared (GC/FT-IR) Spectrometry  
--p. 79  
-Method 1624: Volatile Organic Compounds by Isotope Dilution GCMS  
Method 1625: Semivolatile Organic Compounds by Isotope Dilution GCMS  
--p. 80  
-Organics - Water Quality Standards Criteria Summaries: A Compilation of State/Federal Criteria  
--p. 49  
-An SAB Report: Review of Sediment Criteria Development Methodology for Non-Ionic Organic Contaminants  
--p. 66

**Oryzalin -**

-Determination of Oryzalin in Industrial and Municipal Wastewater  
--p. 78

**Other Elements - Water Quality Standards Criteria Summaries: A Compilation of State/Federal Criteria**  
--p. 49

**An Overview of Sediment Quality in the U.S.**  
--p. 82

**Oxamyl Health Advisory**  
--p. 68

**Oxygen -**

-Ambient Water Quality Criteria for Dissolved Oxygen  
--p. 58  
-Dissolved Oxygen - Water Quality Standards Criteria Summaries: A Compilation of State/Federal Criteria  
--p. 48

**Paint Formulating -**

-Development Document for Effluent Limitations Guidelines, New Source Performance Standards, and Pretreatment Standards for the Paint Formulating Point Source Category  
--p. 24  
-Preliminary Data Summary for the Paint Formulating Point Source Category  
--p. 35

**Paraquat Health Advisory**  
--p. 72

**Parathion -**

**-Ambient Water Quality Criteria for Parathion**

**--p. 61**

**Part 503 Rule -**

**(see "503 Rule")**

**Paving and Roofing Materials**

**-Economic Analysis of Effluent Guidelines for the Tars and Asphalt Segments of the Paving and Roofing Materials Industry**

**--p. 29**

**PCBs -**

**-Ambient Water Quality Criteria for Polychlorinated Biphenyls**

**--p. 61**

**-Determination of Organohalide Pesticides and PCBs in Industrial and Municipal Wastewater: Method 617**

**--p. 78**

**Pentachlorophenol -**

**-Ambient Water Quality Criteria for Pentachlorophenol**

**--p. 61**

**-Pentachlorophenol Health Advisory**

**--p. 68**

**Permit Writer's Guide to Water Quality-Based Permitting for Toxic Pollutants**

**--p. 73**

**Pesticide Industry -**

**-Cost-Effectiveness Analysis of Effluent Limitations Guidelines and Standards for the Pesticide Manufacturing Industry**

**--p. 1**

**-Development Document for Effluent Limitations Guidelines and Standards for the Pesticide Chemicals Manufacturing Point Source Category**

**--p. 19**

**-Development Document for Effluent Limitations Guidelines and Standards for the Pesticide Point Source Category**

**--p. 19**

**-Development Document for Expanded Best Practicable Control Technology, Best Conventional Pollutant Control Technology, Best Available Technology, New Source Performance Technology, and Pretreatment Technology in the Pesticide Chemicals Industry**

**--p. 26**

**-Economic Impact Analysis of Effluent Limitations Guidelines and Standards for the Pesticide Chemicals Industry**

**--p. 32**

**-Economic Impact Analysis of Effluent Limitations Guidelines and Standards for the Pesticide Manufacturing Industry**

**--p. 32**

**-Preliminary Data Summary for the Pesticide Chemicals Point Source Category**

**--p. 35**

**Pesticides -**

**-Determination of Carbamate and Urea Pesticides in Industrial and Municipal Wastewater: Method 632**

**--p. 77**

**-Determination of Dinitroaniline Pesticides in Industrial and Municipal Wastewater: Method 627**

**--p. 78**

- Determination of Dithiocarbamate Pesticides in Industrial and Municipal Wastewater: Method 630  
--p. 78
- Determination of Organohalide Pesticides and PCBs in Industrial and Municipal Wastewater: Method 617  
--p. 78
- Determination of Organonitrogen Pesticides in Industrial and Municipal Wastewater: Method 633  
--p. 78
- Determination of Organophosphorus Pesticides in Industrial and Municipal Wastewater: Method 614  
--p. 78
- Determination of Organophosphorus Pesticides in Industrial and Municipal Wastewater: Method 622  
--p. 78
- Determination of Triazine Pesticides in Industrial and Municipal Wastewater  
--p. 79
- Determination of Volatile Pesticides in Industrial and Municipal Wastewater  
--p. 79
- Drinking Water Health Advisories for 16 Pesticides  
--p. 67, 68
- Drinking Water Health Advisories for 50 Pesticides  
--p. 71, 72
- Methods for the Determination of Nonconventional Pesticides in Municipal and Industrial Wastewater: Methods 604.1, 608.1, 608.2, 614, 614.1, 615-620, 622, 622.1, 627, 629, 630, 630.1, 631, 632, 632.1, 633, 633.1, 634-646, 1656-1661  
--p. 80
- Pesticides - Water Quality Standards Criteria Summaries: A Compilation of State/Federal Criteria  
--p. 49

#### Petroleum Refining -

- Development Document for Effluent Limitations Guidelines, New Source Performance Standards, and Pretreatment Standards for the Petroleum Refining Point Source Category  
--p. 24
- Economic Analysis of Effluent Guidelines for the Petroleum Refining Industry  
--p. 28
- Economic Analysis of Effluent Limitations Guidelines and Standards for the Petroleum Refining Industry  
--p. 29
- Economic Impact Analysis of Effluent Limitations Guidelines and Standards for the Petroleum Refining Industry  
--p. 32
- Guide for the Application of Effluent Limitations Guidelines for the Petroleum Refining Industry  
--33

#### Ph -

- Quality Criteria for Water - 1976  
--p. 64

#### Pharmaceutical Manufacturing -

- Development Document for Best Conventional Technology Effluent Limitations Guidelines for the Pharmaceutical Manufacturing Point Source Category  
--p. 2
- Development Document for Effluent Limitations Guidelines, New Source Performance Standards, and Pretreatment Standards for the Pharmaceutical Manufacturing Point Source Category  
--p. 24
- Economic Analysis of Effluent Limitations Guidelines and Standards for the Pharmaceutical Manufacturing Industry  
--p. 29
- Preliminary Data Summary for the Pharmaceutical Manufacturing Point Source Category  
--p. 35

**Phenanthrene -**

- Ambient Aquatic Life Water Quality Criteria for Phenanthrene  
--p. 52
- Sediment Quality Criteria for the Protection of Benthic Organisms: Phenanthrene  
--p. 66

**Phenol -**

- Ambient Water Quality Criteria for Chlorinated Phenols  
--p. 55
- Ambient Water Quality Criteria for Phenol  
--p. 61

**Phosphate Manufacturing -**

- Development Document for Effluent Limitations Guidelines and New Source Performance Standards for the Other Non-Fertilizer Phosphate Chemicals Segment of the Phosphate Manufacturing Point Source Category  
--p. 9
- Development Document for Effluent Limitations Guidelines and New Source Performance Standards for the Phosphorus Derived Chemicals Segment of the Phosphate Manufacturing Point Source Category  
--p. 9
- Economic Analysis of Effluent Guidelines for the Industrial Phosphate Industry  
--p. 27
- Economic Analysis of Effluent Guidelines for the Non-Fertilizer Phosphate Manufacturing Segment of the Phosphate Manufacturing Industry  
--p. 28

**Phosphorus -**

- Phosphorus - Water Quality Standards Criteria Summaries: A Compilation of State/Federal Criteria  
--p. 49
- Quality Criteria for Water - 1976  
--p. 64
- White Phosphorus Health Advisory  
--p. 70

**Photographic Processing -**

- Guidance Document for the Control of Water Pollution in the Photographic Processing Industry  
--p. 34

**Phthalate Esters -**

- Ambient Water Quality Criteria for Phthalate Esters  
--p. 61

**Picloram Health Advisory**

--p. 72

**Plastics and Synthetic Materials Manufacturing -**

(see "Organic Chemicals, Plastics, and Synthetic Fibers")

**Plastics Molding and Forming -**

- Development Document for Effluent Limitations Guidelines and Standards for the Plastics Molding and Forming Point Source Category  
--p. 19
- Economic Impact Analysis of Effluent Limitations Guidelines and Standards for the Plastics Molding and Forming Industry  
--p. 32

**Policy on Biological Assessments and Criteria**

--p. 65

**Polychlorinated Biphenyls**

(see "PCBs")

**Polynuclear Aromatic Hydrocarbons -**

-Ambient Water Quality Criteria for Polynuclear Aromatic Hydrocarbons

--p. 62

**Porcelain Enameling -**

-Development Document for Effluent Limitations Guidelines and Standards for the Porcelain Enameling Point Source Category

--p. 19

-Economic Impact Analysis of Effluent Limitations Guidelines and Standards for the Porcelain Enameling Industry

--p. 33

**POTWs -**

-Fate of Priority Pollutants in Publicly Owned Treatment Works

--p. 38

-Technical Guidance Manual for Performing Waste Load Allocations - Simplified Analytical Method for Determining NPDES Effluent Limitations for POTWs Discharging into Low-Flow Streams

--p. 75

**Preliminary Report of EPA Efforts to Replace Freon for the Determination of Oil and Grease**

--p. 80

**Primer: Office of Science and Technology**

--p. 92

**Printing and Publishing -**

-Summary of Available Information on the Levels of Controls of Toxic Pollutants Discharges in the Printing and Publishing Point Source Category

--p. 36

**Procedures for Initiating Narrative Biological Criteria**

--p. 65

**Proceedings: Tiered Testing Issues for Freshwater and Marine Sediments**

--p. 82

**Proceedings of the EPA's Contaminated Sediment Management Strategy Forums**

--p. 82

**Proceedings of the Annual EPA Conference on Analysis of Pollutants in the Environment**

--p. 92, 93

**Prometon Health Advisory**

--p. 72

**Pronamide Health Advisory**

--p. 72

Propachlor Health Advisory  
--p. 72

Propazine Health Advisory  
--p. 72

Propham Health Advisory  
--p. 72

Proposed Water Quality Guidance for the Great Lakes System  
--p. 90

Protecting Our Nation's Waters from Industrial Discharges  
--p. 35

Protecting Our Nation's Waters through Water Quality-Based Control  
--p. 74

Publicly Owned Treatment Works  
(see "POTWs")

Publishing  
(see "Printing and Publishing")

Pulp, Paper, and Paperboard and Builders' Paper and Board Mills -  
-Development Document for Best Conventional Pollutant Control Technology Effluent Limitations Guidelines for the Pulp, Paper, and Paperboard and the Builders' Paper and Board Mills Point Source Categories  
--p. 1  
-Development Document for Effluent Limitations Guidelines and New Source Performance Standards for the Bleached Kraft, Groundwood, Sulfite, Soda, Deink, and Non-Integrated Paper Mills Segments of the Pulp, Paper, and Paperboard Point Source Category  
--p. 3  
-Development Document for Effluent Limitations Guidelines and New Source Performance Standards for the Builders' Paper and Roofing Felt Segments of the Builders' Paper and Board Mills Point Source Category  
--p. 3  
-Development Document for Effluent Limitations Guidelines and New Source Performance Standards for the Pulp, Paper, and Paperboard and the Builders' Paper and Board Mills Point Source Category  
--p. 10  
-Development Document for Effluent Limitations Guidelines and New Source Performance Standards for the Unbleached Kraft and Semichemical Pulp Segments of the Pulp, Paper, and Paperboard Mills Point Source Category  
--p. 12  
-Development Document for Effluent Limitations Guidelines and Standards for Control of Polychlorinated Biphenyls in the Deink Subcategory of the Pulp, Paper, and Paperboard Point Source Category  
--p. 12  
-Economic Impact Analysis of Effluent Limitations Guidelines and Standards for the Deink Subcategory of the Pulp, Paper, and Paperboard Industry  
--p. 31  
-Economic Impact Analysis of Effluent Limitations Guidelines and Standards for the Pulp, Paper, and Paperboard Mills Point Source Category  
--p. 33  
-Guidance Manual for Pulp, Paper, and Paperboard and Builders' Paper and Board Mills Pretreatment Standards  
--p. 39

-U.S. EPA/Paper Industry Cooperative Dioxin Screening Study  
--p. 93

Quality Criteria for Water  
--p. 64

Questions and Answers about Contaminated Sediments  
--p. 83

Questions and Answers on Antidegradation  
--p. 51

Rates, Constants, and Kinetics Formulations in Surface Water Quality Monitoring  
--p. 74

Reference Guide to Water Quality Standards for Indian Tribes  
--p. 41

Regulatory Impact Analysis of the Part 503 Sewage-Sludge Regulation  
--p. 86

Regulatory Impact Analysis of the Proposed Great Lakes Water Quality Guidance  
--p. 90

Resmethrin  
-C, N, and O Compounds - Cycloprate, Kinoprene, Methoprene, and Resmethrin: Method 616  
--p. 77

Results of the 1989 Census of State Fish/Shellfish Consumption Advisory Programs  
--p. 84

Revision of Methodology for Deriving National Ambient Water Quality Criteria for the Protection of Human Health:  
Report of Workshop and EPA's Preliminary Recommendations for Revision  
--p. 90

Rotenone -  
-Determination of Rotenone in Industrial and Municipal Wastewater  
--p. 79

Rubber Processing -  
-Development Document for Effluent Limitations Guidelines and New Source Performance Standards for the  
Fabricated and Reclaimed Rubber Segments of the Rubber Processing Point Source Category  
--p. 5  
-Development Document for Effluent Limitations Guidelines and New Source Performance Standards for the Tire  
and Synthetic Segments of the Rubber Processing Point Source Category  
--p. 12  
-Economic Analysis of Effluent Guidelines for the Rubber Processing Industry  
--p. 28

An SAB Report: Review of Sediment Criteria Development Methodology for Non-Ionic Organic Contaminants  
--p. 66



**Salinity -**

**-Quality Criteria for Water 1976**

**--p. 64**

**Sampling and Analysis Procedures for Screening of Industrial Effluents for Priority Pollutants**

**--p. 80**

**Sampling Procedures and Protocols for the National Sewage Sludge Survey**

**--p. 80**

**Seafood Processing -**

**-Development Document for Effluent Limitations Guidelines and New Source Performance Standards for the Catfish, Crab, Shrimp, and Tuna Segments of the Canned and Preserved Seafood Processing Industry Point Source Category**

**--p. 4**

**-Development Document for Effluent Limitations Guidelines and New Source Performance Standards for the Fish Meal, Salmon, Bottom Fish, Clam, Oyster, Sardine, Scallop, Herring, and Abalone Segments of the Canned and Preserved Seafood Processing Industry Point Source Category**

**--p. 5**

**-Economic Analysis of Effluent Guidelines for the Catfish, Crab, Shrimp, and Tuna Segments of the Seafood Processing Industry**

**--p. 26**

**-Economic Analysis of Effluent Guidelines for the Fish Meal, Salmon, Bottom Fish, Clams, Oysters, Sardines, Scallops, Herring, and Abalone Segments of the Seafood Processing Industry**

**--p. 27**

**-Seafood Processing Study, Section 74: Report to Congress**

**--p. 36**

**Sediment Classification Methods Compendium**

**--p. 83**

**Sediment Quality Criteria for the Protection of Benthic Organisms**

**--p. 66**

**Selected Microcomputer Programs for Water Quality Assessments**

**--p. 94**

**Selecting Remediation Techniques for Contaminated Sediment**

**--p. 83**

**Selenium -**

**-Ambient Water Quality Criteria for Selenium**

**--p. 62**

**Semivolatile Organic Compounds -**

**(see "Organics")**

**Sewage-Sludge Rule -**

**(see "503 Rule")**

**Shipbuilding and Repair -**

**-Development Document for Effluent Limitations Guidelines and Standards for the Shipbuilding and Repair Point Source Category**

**--p. 20**

**Silver -**

**-Ambient Aquatic Life Water Quality Criteria for Silver**

**--p. 52**

**-Ambient Water Quality Criteria for Silver**

**--p. 62**

**Simazine Health Advisory**

**--p. 72**

**Soap and Detergent Industry -**

**-Development Document for Effluent Limitations Guidelines and New Source Performance Standards for the Soap and Detergent Manufacturing Point Source Category**

**--p. 11**

**-Economic Analysis of Effluent Guidelines for the Soap and Detergent Industry**

**--p. 28**

**Solids -**

**-Dissolved Solids - Water Quality Standards Criteria Summaries: A Compilation of State/Federal Criteria**

**--p. 48**

**-Quality Criteria for Water - 1976**

**--p. 64**

**Solvent Recycling Industry -**

**-Preliminary Data Summary for the Solvent Recycling Industry**

**--p. 35**

**Special Interest Group (SIG) Forum for Fish Consumption Risk Management - User's Manual, v. 1.0**

**--p. 84**

**Standards for the Use or Disposal of Sewage Sludge - Final Rule**

**--p. 86**

**State Water Quality Standards Summaries**

**--p. 41, 42, 43, 44, 45, 46**

**Status Report: State Compliance with CWA Section 303 (c)(2)(B) as of February 4, 1990**

**--p. 46**

**Steam Electric -**

**-Development Document for Effluent Limitations Guidelines, New Source Performance Standards, and Pretreatment Standards for the Steam Electric Point Source Category**

**--p. 25**

**-Economic Analysis of Effluent Guidelines for the Steam Electric**

**--p. 28**

**Styrene Health Advisory**

**--p. 69**

**Sugar Processing -**

**-Development Document for Effluent Limitations Guidelines and New Source Performance Standards for the Beet Sugar Processing Subcategory of the Sugar Processing Point Source Category**

**--p. 2**

-Development Document for Effluent Limitations Guidelines and New Source Performance Standards for the Cane Sugar Refining Segment of the Sugar Processing Point Source Category

--p. 4

-Development Document for Effluent Limitations Guidelines and New Source Performance Standards for the Raw Cane Sugar Processing Segment of the Sugar Processing Point Source Category

--p. 10

-Economic Analysis of Effluent Guidelines for the Beet Sugar Processing Segment of the Sugar Processing Industry

--p. 26

-Economic Analysis of Effluent Guidelines for the Cane Sugar Refining Segment of the Sugar Processing Industry

--p. 26

Sulfides -

-Quality Criteria for Water - 1976

--p. 64

Synopsis of Water Effect Ratios for Heavy Metals as Derived for Site-Specific Water Quality Criteria

--p. 64

Tainting Substances -

-Quality Criteria for Water - 1976

--p. 64

Tebuthiuron Health Advisory

--p. 72

Technical Background Document for the Great Lakes Water Quality Guidance Implementation Procedures Compliance Cost Study

--p. 90

Technical Guidance Manual for Performing Waste Load Allocations -

-Book II: Streams and Rivers

--p. 74

-Book III: Estuaries

--p. 74, 75

-Book IV: Lakes, Rivers, and Impoundments

--p. 75

-Book VI: Design Conditions

--p. 75

-Book VII: Permit Averaging Periods

--p. 75

-Simplified Analytical Method for Determining NPDES Effluent Limitations for POTWs Discharging into Low-Flow Streams

--p. 75

Technical Guidance on Supplementary Stream Design Conditions for Steady State Modeling

--p. 75

Technical Support Document: Establishment of Ambient Screening Values Under the Great Lakes Water Quality Initiative

--p. 90

Technical Support Document for Water Quality-Based Toxics Control

--p. 76

Technical Support Manual: Waterbody Surveys and Assessments for Conducting Use Attainability Analyses  
--p. 46, 47

Temperature -

-Quality Criteria for Water - 1976

--p. 64

-Temperature - Water Quality Standards Criteria Summaries: A Compilation of State/Federal Criteria

--p. 50

Terbacil Health Advisory

--p. 72

Terbufos Health Advisory

--p. 72

Test Methods for Escherichia Coli and Enterococci in Water by the Membrane Filter Procedure

--p. 80

Tetrachlorodibenzo-p-dioxin

(see "Dioxin")

Tetrachloroethane -

-1,1,1,2-Tetrachloroethane Health Advisory

--p. 67

Tetrachloroethylene -

-Ambient Water Quality Criteria for Tetrachloroethylene

--p. 62

-Tetrachloroethylene (PCE) Health Advisory

--p. 69

Tetranitromethane (TNM) Health Advisory

--p. 70

Textile Mills -

-Development Document for Effluent Limitations Guidelines and New Source Performance Standards for the Textile Mills Point Source Category

--p. 11, 12

-Economic Analysis of Effluent Guidelines for the Textile Mills Industry

--p. 29

-Economic Impact Analysis of Effluent Limitations Guidelines and Standards for the Textile Mills Industry

--p. 33

Thallium -

-Ambient Water Quality Criteria for Thallium

--p. 62

Timber Products Processing -

-Development Document for Effluent Limitations Guidelines, New Source Performance Standards, and Pretreatment Standards for the Plywood, Hardboard, and Wood Preserving Segments of the Timber Products Processing Point Source Category

--p. 25

- Development Document for Effluent Limitations Guidelines, New Source Performance Standards, and Pretreatment Standards for the Timber Products Processing Point Source Category  
--p. 25
- Economic Impact Analysis of Alternative Pollution Control Technologies for the Wet Processing and Insulation Board Subcategories of the Timber Products Industry  
--p. 30
- Economic Impact Analysis of Alternative Pollution Control Technologies for the Wood Preserving Subcategory of the Timber Products Industry  
--p. 30
- Preliminary Data Summary for the Wood Preserving Segment of the Timber Products Processing Point Source Category  
--p. 35

#### Tires

(see "Rubber Processing")

#### TMDLs -

- EPA's Review and Approval Procedure for State Submitted TMDLs/WLAs  
--p. 73
- Guidance for Water Quality-Based Decisions: The TMDL Process  
--p. 73

#### Toluene -

- Ambient Water Quality Criteria for Toluene  
--p. 62
- Toluene Health Advisory  
--p. 69

#### Toxaphene -

- Ambient Water Quality Criteria for Toxaphene  
--p. 63
- Toxaphene Health Advisory  
--p. 68

#### Toxics -

- Dynamic Toxics Waste Load Allocation Model (DYNTOX) User's Manual  
--p. 73
- Permit Writer's Guide to Water Quality-Based Permitting for Toxic Pollutants  
--p. 73
- Technical Support Document for Water Quality-Based Toxics Control  
--p. 76
- Water Quality Assessment: A Screening Procedure for Toxic and Conventional Pollutants in Surface and Ground Water  
--p. 76

#### Tracking Report: State Water Quality Criteria for Dioxin (2,3,7,8-TCDD)

--p. 47

#### Tributyltin -

- Ambient Aquatic Life Water Quality Criteria for Tributyltin  
--p. 52

Trichlorobenzene -

-1,2,4-Trichlorobenzene Health Advisory

--p. 67

-1,3,5-Trichlorobenzene Health Advisory

--p. 67

Trichloroethane -

-1,1,1-Trichloroethane Health Advisory

--p. 69

-1,1,2-Trichloroethane Health Advisory

--p. 67

Trichloroethylene -

-Ambient Water Quality Criteria for Trichloroethylene

--p. 63

-Trichloroethylene Health Advisory

--p. 69

Trichlorofluoromethane Health Advisory

--p. 67

Trichlorophenol -

-Ambient Aquatic Life Water Quality Criteria for 2,4,5-Trichlorophenol

--p. 52

Trichlorophenoxyacetic Acid -

-2,4,5-Trichlorophenoxyacetic Acid Health Advisory

--p. 68, 72

Trichloropropane -

-1,2,3-Trichloropropane Health Advisory

--p. 67

Trifluralin Health Advisory

--p. 72

Trinitroglycerol Health Advisory

--p. 70

Trinitrotoluene Health Advisory

--p. 70

Turbidity -

-Quality Criteria for Water - 1976

--p. 64

-Turbidity - Water Quality Standards Criteria Summaries: A Compilation of State/Federal Criteria

--p. 50

U.S. EPA/Paper Industry Cooperative Dioxin Screening Study

--p. 93

VOCs

(see "Organics")

**Variances in Water Quality Standards**

--p. 51

**Vinyl Chloride -**

**-Ambient Water Quality Criteria for Vinyl Chloride**

--p. 63

**-Vinyl Chloride Health Advisory**

--p. 69

**Volatile Organic Compounds**

(see "Organics")

**Water Programs; Guidelines Establishing Test Procedures for the Analysis of Pollutants**

--p. 81

**Water Quality Assessment: A Screening Procedure for Toxic and Conventional Pollutants in Surface and Ground Water**

--p. 76

**Water Quality-Based Approach to Pollution Control**

--p. 87

**Water Quality Criteria Summary**

--p. 64

**Water Quality Criteria to Protect Wildlife Resources: Workshop Summary Report**

--p. 47

**Water Quality Guidance for the Great Lakes System**

--p. 90, 91

**Water Quality Improvement Study: Report to Congress**

--p. 93

**Water Quality Standards; Establishment of Numeric Criteria for Priority Toxic Pollutants; State's Compliance; Final Rule**

--p. 47

**Water Quality Standards and 401 Certification**

--p. 87

**Water Quality Standards Criteria Summaries: A Compilation of State/Federal Criteria**

--p. 47, 48, 49, 50

**Water Quality Standards for the 21st Century: Proceedings of a Conference**

--p. 50

**Water Quality Standards for Wetlands: National Guidance**

--p. 50

**Water Quality Standards Handbook**

--p. 50, 51

Water Quality Standards on Indian Lands

--p. 87

Water Quality Standards Regulation

--p. 51

Wildlife Criteria Portions of the Proposed Water Quality Guidance for the Great Lakes System

--p. 91

Xylenes Health Advisory

--p. 69

Zinc -

-Ambient Water Quality Criteria for Zinc

--p. 63

-Zinc - Water Quality Standards Criteria Summaries: A Compilation of State/Federal Criteria

--p. 50