

United States
Environmental Protection
Agency

September 1990

Office Of Enforcement (LE-133)



Environmental Criminal Enforcement

A Law Enforcement Officer's Guide



Contents

Introduction..... 1

Who Are the Enforcers? 2

Compliance Monitoring —
Checking Up 6

Inspections..... 7

Criminal Investigations —
Catching Environmental
Criminals 12

Enforcement Actions —
The Tools We Use..... 14

The Broad Shadow
of Deterrence..... 18

How You Can Help 20

For Further Information 24

Environmental Agencies..... 25

Project Coordinator:
William H. Frank

Preface

Vigorous and effective enforcement is a *cornerstone of the Environmental Protection Agency's (EPA) effort to improve the environment and protect human health. Enforcement prevents pollution. Enforcement minimizes risk.* EPA enforcement makes clear that the American people view environmental degradation as not only an unacceptable business practice, but as an assault on our shared notions of responsible citizenship.

The pages that follow explain the complex functions of EPA's environmental law enforcement mechanism. The structure of the Agency's enforcement apparatus, the methods and the enforcement officials who use them are identified and described.

Law enforcement officers and citizens have an important role to play in environmental enforcement. Together, we can make great progress toward environmental improvement.

James M. Strock
Assistant Administrator for
Enforcement

Introduction

What if lawmakers passed an environmental law and nobody obeyed?

Environmental laws set standards for what people and institutions must do to control or prevent pollution. After enactment, it becomes the job of the federal, state and local governments and, if applicable, Indian tribes, to make sure that those who are subject to the laws know what they must do to comply. The primary federal environmental role is carried out by the Environmental Protection Agency (EPA).

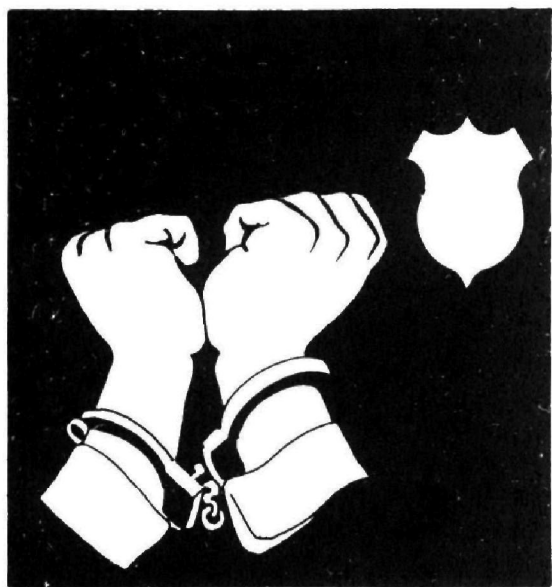
Enforcement is the governmental response to people who fail to obey the laws. Some become violators out of ignorance. And there are always some who dislike the new laws and think they can violate them with impunity. EPA's enforcement program aims to deter all violations of the law.

"Enforcement" as we will discuss it here consists of all efforts to encourage compliance with environmental laws. "Compliance" refers to the condition that exists when a person or company fully obeys the law (when it complies with the law).

An environmental law without compliance would mean that pollution problems would continue and grow worse. EPA has an enforcement program to make sure the laws get the results Congress and the public want.

The fundamental aim of enforcement is to convince those who are regulated by environmental laws that it is better to comply quickly than to wait until they are caught.

Who Are The Enforcers?



Environmental enforcement is a comprehensive program involving federal, state and local governments. From the nation's capital to the neighborhood you live in, there is a far-reaching network of enforcement personnel to make sure the environmental laws are obeyed.

Federal Government

EPA leads the federal government's environmental enforcement efforts, applying the latest sophisticated law enforcement techniques and drawing upon the specialized abilities of other federal agencies.

The headquarters organization of EPA includes a central enforcement office, the Office of Enforcement, which advises all other EPA offices on enforcement and manages EPA's litigation program. There are also

specialized enforcement units attached to the offices that manage the programs pertaining to air, water, hazardous wastes, and pesticides and toxic substances.

Ten regional offices manage EPA programs in the field and conduct most of the day-to-day enforcement activities of the Agency. Where a state has been approved by EPA to implement the program, the regional office oversees the state's performance to assure consistency with the federal law. In unapproved states, the EPA regional office administers the program. Enforcement activities are carried out by three types of units:

- Program divisions for water, waste, and air (including pesticides and toxics) conduct inspections and initiate administrative enforcement actions.
- The environmental services division conducts inspections on behalf of program divisions.
- The regional counsel conducts enforcement litigation and gives legal advice to the program divisions.

The National Enforcement Investigations Center (NEIC) is a technical resource and investigative unit for EPA's civil and criminal enforcement efforts. It maintains a staff of trained criminal investigators who are located in EPA regional offices throughout the country, where they work closely with the Regional Counsel's office and U. S. Attorneys in pursuing environmental criminals.



Remedial worker collecting toxicity data from abandoned drums

The Department of Justice (DOJ) plays a crucial role in EPA's enforcement activities. When EPA wishes to prosecute a violator in the U.S. Court system, EPA refers the case to DOJ, recommending prosecution. This recommendation is considered by DOJ attorneys who specialize in environmental litigation, and DOJ makes the final decision whether or not to file the case. When the case goes to court, DOJ legally represents EPA in court though EPA's legal and technical staff remain actively involved in the case.

The Federal Bureau of Investigation (FBI) assists EPA in investigating and apprehending environmental criminals.

State Governments

Virtually every federal environmental law allows state governments to develop programs for implementing the federal law in their states. When EPA has determined that the state program meets the federal requirements, EPA approves the state program. Such programs are called "delegated" or "approved" programs. Under this arrangement, the states apply the national standards and regulations by issuing and enforcing their own rules and permits.

State governments carry out the lion's share of environmental enforcement actions. For instance, most of the inspections in the state programs are done by state governments (some 80 to 90 percent as of 1988). And most of the enforcement actions are taken by states (some 70 percent of the national total under the

federal air, water and hazardous waste programs).

Enforcement at the state level is carried out by a number of different agencies:

- **State environmental agencies** usually have responsibility for permits, inspections, and certain types of enforcement actions. In some states a single environmental agency handles all EPA programs, while in others several agencies divide the responsibilities. States may also delegate some of the activities to county or city governments. Your local health department may be the front-line troops against pollution.

- **The state attorney general** is the chief law enforcement official for the state, and his or her decisions have a major influence over the strength of the environmental enforcement program in the state. The attorney general also has responsibility for suing violators, at the request of state environmental agencies.

- **District attorneys** may also have responsibility for suing violators and typically represent municipalities. In some states, the District Attorney's approval is required for enforcement suits to be filed by the attorney general.

The states' environmental enforcement programs vary greatly, so EPA encourages efforts among states to pool their experience and knowledge to raise their overall effectiveness. For example, one area of current sharing is

criminal enforcement, because many states still lack criminal enforcement programs, even though their state legislatures may have authorized criminal prosecution.

EPA strives to work out an effective enforcement partnership with each state. This is accomplished through enforcement agreements with the separate state agencies. These agreements usually define the characteristics of a good program, using the same criteria by which EPA judges its own performance.

The agreements also spell out the circumstances under which EPA will step in and take enforcement action in an approved state program. The most common are:

- if the state requests it;
- if the state's enforcement response is not timely and appropriate (this criterion will be discussed later in this booklet);
- if the case involves national precedents; or
- if there is a violation of an EPA order or consent decree (settlement agreement).

EPA assists the states through training of technical and enforcement staff and helping state agencies develop their enforcement strategies. EPA also conducts oversight inspections to identify needs and opportunities for strengthening the state's inspection program.



Conducting an environmental enforcement seminar for an international audience at the Federal Law Enforcement Training Center.

Compliance Monitoring — Checking Up

The essential first step in enforcing a law is to find out who is obeying it and who is violating it. This is “compliance monitoring.”

There are three basic types of compliance monitoring, and they are used differently by EPA’s major programs, depending upon the nature

of the regulated pollutants and the types of facilities involved:

Self-Monitoring - Most U.S. environmental laws require the regulated facilities to keep track of their own compliance status and report all or part of the resulting data to the responsible agency. This not only gives the agency data it needs; it helps to alert the company’s top management to its progress in obeying the law. Fraudulent reporting is a serious offense under federal law, and inspections serve as a check on the data submitted by regulated facilities.

Inspections - Inspections are the backbone of EPA’s compliance monitoring programs. They are the government’s main tool for officially assessing compliance. An inspection is an examination into the environmental affairs of a single regulated facility, to see whether it is in compliance with environmental requirements. Inspection findings become the basis for a variety of possible actions EPA might take to bring the facility into compliance.

Area Monitoring - Used less often than inspections or self-monitoring, area monitoring looks at environmental conditions in the vicinity of a facility, or over a larger area. Methods used for area monitoring include ambient monitoring, remote sensing, and overflights. For example, the air quality reports given in local news broadcasts are one result of area monitoring.



Overflights are used to monitor facilities suspected of noncompliance with environmental laws.

Inspections

An inspection is intended to attain the following objectives, thereby advancing the goal of maximum compliance:

Assess Compliance Status - Inspectors observe the facility and identify specific environmental

problems, if any exist. This information will enable EPA to determine whether the facility is in compliance.

Collect Evidence - Inspectors collect and preserve evidence of any specific problems that appear to be violations. The evidence will be used in the resulting enforcement action to bring the facility into compliance.

“Show the Flag” - The inspection itself creates a visible, credible presence of the interest and power of the government in the eyes of managers at the regulated facility. This helps to deter violations at that facility and other similar facilities.

How Inspections Are Allocated

In theory, it might be desirable to inspect every regulated facility on a regular basis. No government program, however, has the funds and personnel to do that. As a result, each EPA program has a strategy or policy for allocating inspections to various segments of the regulated community, and ultimately to particular facilities.

Inspections are conducted for any of four reasons:

Routine - The largest number of inspections are routine inspections, conducted because the facility is within a segment of the regulated community that has been targeted for inspection.

For cause - In this case, there is some reason to suspect that an actual



On-site inspections are widely used by EPA to identify, examine, and remedy violations.

violation exists. The stimulus may be a tip, a citizen's complaint, a self-monitoring report, or a referral from another agency. Data available from other EPA programs, such as the Toxic Release Inventory, may be cause for an inspection.

Case development support -

Sometimes an initial inspection did not collect enough evidence to support an enforcement action, and a second inspection is needed to collect specific types of evidence requested by EPA enforcement attorneys.

Follow-up - Follow-up inspections are performed to check on facilities that were found in violation and have been ordered to comply through an enforcement action. If the facility is still out of compliance, EPA will usually escalate to a stronger enforcement action.

The Inspection Scheme

Each EPA program has an overall inspection scheme allocating a proportion of inspections to each of



Action by federal and state environmental agencies is often prompted by tips from concerned citizens who come across possible violations during their daily routine.

the categories described above, in accordance with the program's enforcement goals and priorities.

Each EPA program has its own approach to establishing enforcement goals and priorities. However, no matter what program is involved, three central questions govern priority-setting:

- How likely is it that a violation in a particular class of facilities would present a significant risk to human health and the environment?
- How likely is it that a class of facilities will violate environmental laws or regulations?
- How likely is it that inspections of a particular class of facilities will help deter violations?

In a high-priority class, every facility might be inspected. In lower-priority classes, only a small proportion of the facilities might be inspected.

Each EPA program has developed a "neutral administrative inspection scheme" setting out how the regulated community is divided into classes or segments for the purpose of targeting routine and follow-up inspections. Typical criteria for these segments include type of industry, size of facility, and amount of pollutants they handle.

The scheme is "neutral" in that the specific facilities within each class or segment are selected for inspection on a random basis.

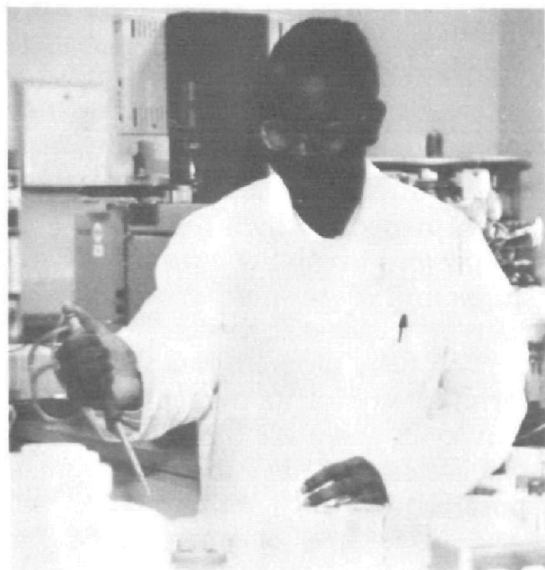
Levels of Inspection

Inspections range from a quick walk-through by a single inspector, which might take less than half a day, to an inspection by a team of inspectors involving extensive collection of samples, which could take up to several weeks.

Each EPA program has its own terminology for its inspections. However, there are three general categories that describe the range of possibilities:



Getting ready for an inspection.



A technician analyzes collected physical samples at one of EPA's many laboratories.

Walk-through inspection - would generally be limited to a quick survey of the facility, checking only for the existence of control equipment, observing work practices and housekeeping, and checking as to whether there is a records repository. Such inspections help to establish an enforcement presence, and they can also serve as a screening process to identify facilities that should be targeted for more intensive inspection.

Compliance evaluation inspection - the most common form of inspection. It might include visual observations (as in the walk-through), review and

EPA regularly uses specially modified aircraft for aerial sampling and monitoring.



evaluation of records, interviews with facility personnel, and collection of other evidence, such as physical sampling. It might also include detailed review and critique of self-monitoring methods, instruments and data, and probing for details about process and control devices that are in place.

Sampling inspection - always involves pre-planned collection of physical samples. Sampling inspections are the most resource-intensive, since they involve advance planning of the sampling as well as laboratory analysis of the samples.

Less frequently used techniques include aerial photography and airborne laser instrumentation. EPA is constantly seeking new and more effective inspection methods to use in the fight against pollution.

The Inspector

The inspector's fundamental mission is to examine the state of compliance of a single regulated facility. Inspectors for EPA and state agencies are often the only environmental officials the plant manager and facility workers will ever see in person. EPA considers its inspectors a vital element of its contact with the public.

Inspectors have technical competence in the subject of the inspections they perform, are skilled in obtaining the crucial facts, and know how to collect and preserve evidence of noncompliance for use in enforcement actions. They also

prepare inspection reports and serve as witnesses in court.

An expertly prepared inspection report, which clearly documents violations and includes samples of polluted materials, can be highly persuasive to a judge, a jury, or an administrative law judge. The inspector is often the key witness for the government in an enforcement case.

EPA conducts a training and development program for inspectors to assure that they have the legal, technical, administrative and communications skills needed to conduct compliance inspections. The Agency requires its inspectors to take a basic training course on environmental compliance inspections; specific EPA programs also conduct training to prepare inspectors for particular types of inspections.

Criminal Investigations— Catching Environmental Criminals

Those who knowingly violate environmental laws may be considered environmental criminals. In certain circumstances, under the Clean Water Act, negligent acts can also be construed as criminal violations. EPA and state agencies have criminal enforcement programs to bring these violators to justice.

The consequences of a criminal violation are more severe than those for civil violations. Criminal violations of environmental laws may be either misdemeanors or felonies, punishable by a fine of up to \$50,000 per day or per violation, or by imprisonment for up to five years per day of violation, or both.

Both corporations and their executives have paid heavy fines for criminal violations, and company managers have gone to prison. The growth of criminal enforcement has provided a powerful incentive for voluntary compliance.

EPA's National Enforcement Investigation Center (NEIC) stations special agents at each EPA regional office. The special agents have full power as law enforcement officers. They are authorized to execute search warrants, make arrests, and carry firearms.

How A Criminal Investigation Begins

The "initial lead," an allegation of potential criminal activity, usually comes to EPA's criminal investigation staff from other EPA employees, from state agencies, from citizens, or from company employees who suspect a problem.

Criminal investigations often grow from compliance inspections. Inspectors are always on the lookout for possible criminal violations, which involve knowing or willful behavior, fraudulent reporting, or negligent actions (under the Clean Water Act). EPA inspectors are prepared to call on EPA's criminal investigation staff when they encounter incidents such as:

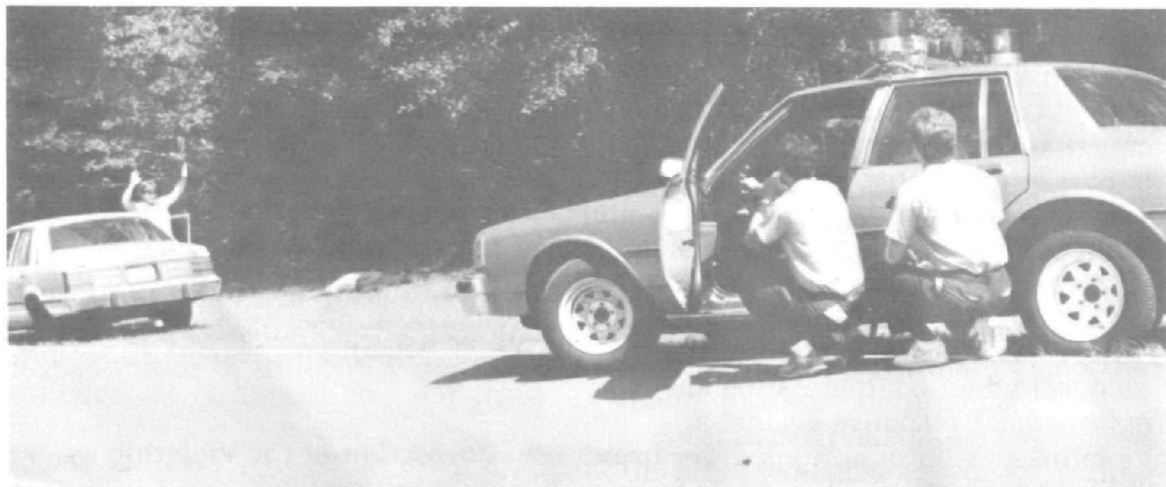
Conflicting data - When the company has two sets of records on the same incident, or its monitoring data is not consistent.

Conflicting stories - When an inspector is told one thing and sees something quite different, either in records or through observation.

Unsubstantiated data - When the inspector is given monitoring data for which there is no supporting record or documentation.

Deliberate actions - When an employee says he or she was told to do something the inspector knows to be illegal.

Claims of ignorance - When an employee claims to be unaware of established requirements, but the inspector discovers records in the



company's files showing knowledge of those requirements or where co-workers make statements during interviews showing that the employee had knowledge.

If the criminal investigation confirms that a criminal violation occurred, it may lead to a criminal prosecution. This will be discussed later in this booklet.

Clockwise from top—EPA investigators participate in a "vehicle stop and search" exercise, which involves chasing after and apprehending fleeing suspected felons; EPA uses many "high tech" tools in its investigations. Pictured here is a lidar gun, which is essentially a laser that is used to detect the contents of emissions from suspect sources; state and local law enforcement personnel participate in a hazardous waste investigations training program sponsored by EPA.

Enforcement Actions— The Tools We Use

An enforcement action is a response to something a person or company has done in violation of a law or regulation. (For this reason, it is often called an “enforcement response.”) It is EPA’s policy that every violation will be responded to in some way, and the type of response will be in keeping with the seriousness and circumstances of the violation.

EPA has a range of options at its disposal when contemplating an enforcement response against a violator, and these options differ from one law to another. They range from informal actions that take little effort to formal ones involving large commitments of time and money.

To EPA, these options are tools. Together they comprise EPA’s enforcement tool kit, from which the most appropriate tool will be chosen for the job at hand.

The Goals of Enforcement Actions

In choosing the most appropriate enforcement response to a given violation, EPA aims to achieve several goals:

- **Correction** of the violation as quickly as possible.
- **Deterrence** of future violations by the same party or other parties.

Removing contaminated materials from a facility—one of the first of many steps to correct the violation



- **Fairness** to the regulated community by treating similar violations similarly.
- **Punishment** of serious, willful wrongdoing through criminal sanctions, such as fines and jail time.
- **Effective use of enforcement resources** by using the enforcement response that achieves environmental and health goals at the least expenditure in money and staff time.

Types of Enforcement Actions

There is a wide array of possible enforcement actions under the laws EPA administers. These different tools can be grouped in four "levels of action," differing in severity and in the scale of agency resources required.

A given violation may be handled by actions at more than one level. And, if a lower-level response fails to get results, it is EPA's policy to escalate to a higher level. The four levels of action are listed below in order of increasing severity:

Informal responses are administrative actions that are advisory in nature, such as a notice of noncompliance or a warning letter. In these actions, EPA advises the manager of a facility what violation was found, what should be done to correct it, and by what date. Informal responses carry no penalty nor power to compel action, but if they are ignored, they can lead to more severe actions.

Formal administrative responses are legal orders that are independently enforceable; require the recipient to take some corrective/remedial action within a specified period of time; require the recipient to refrain from some certain behavior, and require future compliance. These administrative actions are strong enforcement tools; if a person violates an order, EPA may obtain U.S. Court action to force compliance.

Administrative actions are usually the most expeditious way of dealing with a violation. They are resolved quickly, and they absorb less staff time and money than cases in the U.S. Court system. Therefore, they are used heavily by most EPA programs that have the authority for them. Congress has given EPA authority for administrative enforcement in more programs during recent years, as the effectiveness of this approach has become clear.

Administrative actions are handled under EPA's internal administrative litigation system, which is comparable to any court system, except that it is presided over by EPA's administrative law judges (ALJs). A violating company may appeal an ALJ's ruling to the EPA Administrator and may appeal the Administrator's final decision to the U.S. Courts. In practice, most violators do not pursue these appeal opportunities.

Civil judicial responses are formal lawsuits taken in the U.S. Court system by the U.S. Department of Justice (DOJ) at the request of EPA. They are normally used against the more serious or recalcitrant violators of environmental laws or to seek prompt correction of imminent hazards that pose an immediate threat to human health or the environment.

Civil judicial cases generally result in penalties and court orders requiring correction of the violation and requiring specific actions to prevent future violation (such as specialized monitoring by the facility).

Preparation of civil judicial cases requires more staff effort and money than administrative enforcement, and judicial cases sometimes take several years to complete. Therefore, EPA often responds to violations through administrative actions, where it has this authority.

Criminal judicial responses are used when a person or company has knowingly and willfully violated the law. In a criminal case, the Department of Justice prosecutes an alleged violator in the U.S. Court system, seeking criminal sanctions, usually including fines and imprisonment.

Criminal actions are often used to respond to flagrant, intentional disregard for environmental laws (such as "midnight dumping" of hazardous wastes) and deliberate falsification of documents or records.

Criminal cases are the most difficult type of enforcement response to pursue. They require special

procedures for investigations and case development, and the government bears the burden of proof to show intent of the violator to commit the violation.

Enforcement Response Policies

EPA issues "enforcement response policies" to help assure that violators in similar circumstances are treated similarly. These policies guide EPA enforcement officials as they decide how to respond to specific violations, either in selecting the type of enforcement action to be used, or determining the penalty to be proposed.

Two EPA enforcement policies apply to all EPA programs and are implemented through specific policies adopted by the programs:

Penalties - EPA's policy on civil penalties explains how a proposed penalty figure should be calculated. Each penalty should, at a minimum, reclaim any economic benefits the violator obtained by not complying (the "benefit component"). In addition, the penalty should include an amount reflecting the seriousness of the violation (the "gravity component").

Finally, the preliminary figure may be increased or decreased to account for differences between cases such as the degree of willfulness or negligence by the violator, the violator's history of compliance or noncompliance, the violator's ability to pay, and the violator's degree of cooperation.

Timely and Appropriate

Enforcement Response - Under EPA policy, the response to any violation should be both timely and appropriate. Each EPA program has defined the acceptable number of days (or "timeliness") from detection of the violation to an initial response for the types of violation that occur in that program. The program offices have also spelled out the appropriate enforcement responses for different types of violations. State agencies also apply these concepts through their own policies and enforcement programs.

These generic EPA policies are usually applied by the specific program offices when they draw up an enforcement response policy for a given law or set of regulations.

The Broad Shadow Of Deterrence

Enforcement casts a broad shadow of deterrence which dissuades people from violating the laws. Specific enforcement actions are taken against relatively few violators at specific sites where inspections have revealed violations; yet, these relatively few actions are capable of fostering compliance by an entire industry at facilities all over the country.

Enforcement is the essential driving force that makes environmental laws work. Without enforcement, environmental laws would be largely words on paper, because there are powerful disincentives working against compliance. Enforcement evens the scales by adding a powerful incentive in favor of compliance.

The Elements of Deterrence

Enforcement stays the hand of the would-be violator and encourages the person who wants to comply. It does this chiefly by creating a **fear of detection and an assurance of fairness**.

The manager of a company fears being caught in violation of environmental laws and suffering the consequences. The manager may fear that the company will lose money through a penalty, that bad publicity will harm the company's sales, or that company managers will have to serve

a prison sentence. The manager may also fear a salary cut or loss of his or her job as a result of an enforcement action.

A manager who is willing to comply with the law wants an assurance that competitors will not be free to ignore the law and, as a result, keep their prices lower or accumulate more profit. If enforcement is applied fairly and consistently, it gives this assurance of fairness (or "equity") to the cooperative manager.

Credible Enforcement Presence

In practice, environmental agencies create the fear of detection and the assurance of fairness by maintaining a credible enforcement presence. The following elements go into creating this presence:

Credible likelihood of detection - The managers of a company believe detection is likely if they know inspectors are active in visiting similar companies.

Serious consequences of detection - Managers believe detection will lead to serious consequences if they know that inspections of similar companies have led to enforcement actions resulting in heavy penalties or jail sentences.

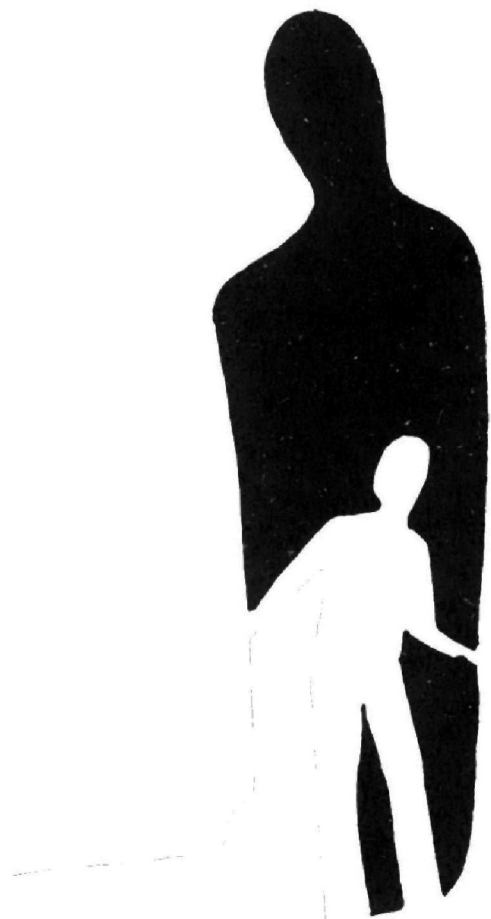
Swift and sure response - When managers see that EPA or state response to detection of a violation is quick and unavoidable, they know they cannot escape the consequences by giving excuses or gaining time through lengthy bargaining.

Fair and consistent response - When company managers see that EPA and state inspections and enforcement actions are fair and consistent, they perceive the assurance of fairness they need to comply. It also tells them the enforcement process is not open to favoritism or bargaining for special treatment.

A credible enforcement presence gives company managers a substantial incentive to comply with the law. Many managers have concluded that it is good business strategy to comply and take the credit for good community citizenship. Better that than fall into noncompliance and get a black eye through the unfavorable publicity that attaches to environmental violations. Although some consider such action to be voluntary compliance, it owes much to enforcement, because the manager's decision to comply is influenced partly by the knowledge that noncompliance involves serious risks.

If the inspections and enforcement actions are done well, their effect is multiplied many-fold, so that many people are deterred from violating the law.

When an agency focuses on deterring violations, it is using leverage to influence others to comply without having to deal with them one-by-one through enforcement actions. EPA uses deterrence to get maximum compliance from its enforcement budget.



How You Can Help

Every citizen has two vital roles to play in enforcement of environmental laws. First and foremost, each of us must be thoughtful about our own compliance with the laws, both at home and on the job. We can also encourage others to comply and, when we discover clear violations, take steps to resolve those problems.

Compliance at Home and on the Job

Few environmental laws focus on what we do at home, but a host of pollution problems are caused by what we do there. We must begin to ask ourselves, "How can I prevent pollution at home?"

Some of the everyday sources of pollution are: exhaust from poorly maintained cars and trucks; solvents from discarded paints, paint thinners and nail polish remover; waste crankcase oil; household cleaners; and garden poisons and fertilizers that are discarded or used too heavily. Also, waste paper and trash add a burden either to the solid waste problem (if buried in municipal landfills) or to air pollution (if burned). And wasteful use of electric power causes excess pollution at the power plant where it is generated. All these problems can be reduced by our actions at home. There are many environmental books and magazines which give step-by-step advice on how to do this.

Home activities that are federally regulated include: use of pesticides (the label must show EPA approval, and the product must be used as the label directs); cars must pass any emissions testing requirement in effect

in your state; and filling of wetlands is usually prohibited.

Most workplaces in the United States are subject to some form of environmental regulation, because we now know that pollution comes from many sources large and small. Even neighborhood dry cleaners are now required to take proper care of the cleaning fluids they use. Look around you for possible problems at your workplace.

One of the main reasons for noncompliance at the workplace is that top management of businesses and governments is ignorant of problems that lower-level employees do not report. This institutional breakdown can be solved if employees alert upper management to the possibility that the company may be violating the law. You can help by telling your superiors about pollution problems you know about. In many organizations there is also an environmental officer or staff to whom employees can report potential problems.

Federal employees should be aware that federal facilities are, in almost all cases, not exempt from environmental laws. They are subject to the same environmental requirements and standards as private businesses. Federal employees should advise their superiors of pollution problems they see. If follow-up with superiors does not resolve the problem, reporting such problems outside the agency is an option, although a less effective one. (Information on "whistleblower" protection laws is available from the Government Accountability Project, 25 E Street, N.W., Washington, D.C. 20001.)

How to Recognize a Potential Pollution Problem

While some pollution is an unfortunate consequence of modern industrial life, there are national and state laws that limit the amount and kinds of pollution allowed, and in some cases these laws completely prohibit certain types of pollution. Sometimes it will be easy for a citizen to identify pollution that is a violation of the law and sometimes it will be difficult to identify the pollution problem without sophisticated equipment.

The U.S. EPA encourages the public to “keep their eyes and ears open” and to contact the appropriate local, state or federal authorities whenever they notice a potential pollution problem. There are a few general guidelines a citizen can use to identify a pollution

problem. While the following guidelines will not identify all pollution problems, they will help citizens identify those pollution problems that should be reported to the appropriate authorities:

Unusual Does the type or source of the pollution seem unusual; i.e., something that is different from how similar things appear to work or from how they used to work? For example, is there a particular truck company that appears to operate vehicles that belch out black smelly smoke? Or, has the smoke from a smokestack changed recently, such that it now has a much darker look or a much more noticeable smell? Or, does your drinking water have an unusual odor or taste, or a particular color to it?

Odor Does the pollution present a strong odor or smell that is unpleasant? If the odor from the pollution burns your eyes, mouth, nose, or skin, you should immediately leave the area, contact local public health officials, and seek medical attention if the burning sensation continues after you leave the area.

Sight Does the pollution look nasty or foul? While everyone will have their own views on what this means, many of us will agree that certain things are offensive. For example, is there a strongly colored water discharge from a pipe going into a clear stream? Are there dead fish or animals in the



area of the pollution? Is there an area of dead grass or damaged vegetation near the pollution? Is dark black smoke coming out of a smokestack, so dark in fact that you cannot see through it at all? This is a likely air pollution violation. Similarly, is there a pipe discharge wastewater containing foam and visible solids, or that leaves a visible oil sheen on the water? This is a likely water pollution violation.

Secretive Is there something secretive or suspicious about the potential pollution-causing activity? For example, is a bulldozer operating at night in a marsh or wetland? This might be an indication that someone is illegally filling a

wetland. Is a truck pouring wastewater into a sewer on the side of a road? This might be an indication that someone is illegally dumping hazardous waste. Is someone dumping garbage (in barrels, cans, or bags) at a site where it probably should not go, for example, in the back of a parking lot, in an alley, in the woods, or in someone else's trash dumpster?

If the answer to these kinds of question is yes, citizens should notify local or state authorities about their observations. These guidelines are not perfect, and thus they may fail to identify some pollution problems while occasionally identifying some legal activities as pollution problems.

Unfortunately, depressing sights such as this can be found all over the United States. EPA encourages the public's participation in identifying pollution problems.



But these guidelines should help citizens decide which types of things are potential pollution problems that should be reported to the authorities for investigation.

In identifying potential pollution problems, citizens should make careful observations by writing their observations on paper and even photographing the situation if possible. Refer to Section 15 for suggestions on how to reach the agencies that are equipped to do something about the problems you report.

Citizen Suits

In 1970, when Congress enacted the Clean Air Act ("CAA"), it included in this new environmental statute a provision allowing concerned citizens to bring lawsuits against both the EPA and air polluters for violations of the CAA. Specifically, this provision of the CAA allowed citizens to sue polluters who violated certain requirements of the Act and to sue the EPA if it failed to carry out a non-discretionary duty set forth in the Act.

This was the first time individual citizens had been empowered by Congress to bring a lawsuit under a federal environmental statute for the purpose of enforcing that statute. Congress chose to grant citizens this right for two primary reasons: Congress anticipated that the federal government, due to limited resources, would need assistance in order to obtain broad enforcement of the CAA.

Congress also perceived the necessity of holding the EPA accountable for undertaking the many non-discretionary statutory duties that Congress required the EPA to fulfill. Out of a desire to assure that the environment would be adequately protected, and not merely on paper, Congress gave the citizens the powerful tool of the "Citizen's Suit" to ensure both that polluters were brought to justice and that EPA fulfilled its duties.

A citizen suit provision has been included in almost every federal environmental statute enacted since 1970, including the Clean Water Act, the Solid Waste Disposal Act (commonly called "RCRA"), the Toxic Substances Control Act, the Noise Control Act, the Endangered Species Act, the Marine Protection, Research, and Sanctuaries Act, the Comprehensive Environmental Response, Compensation, and Liability Act (commonly called "Superfund"), and, most recently, the Safe Drinking Water Act. Under each of these statutes Congress has granted citizens the power to initiate an enforcement action in federal court in order to ensure adequate protection of the environment.

Citizen suits have proved to be an important tool for the enforcement of the various environmental statutes. EPA and the states, despite limited resources with which to conduct their environmental compliance and enforcement programs, have taken thousands of enforcement actions against environmental polluters. Nevertheless, the number of

For Further Information

environmental violations often exceeds the federal and state enforcement resources available to prosecute violations. Citizen suits have been important in filling the gap.

There are innumerable citizen suit success stories. A brief example of just one of these lawsuits paints a picture of the vital role citizens have played in protecting the environment through the use of citizen suits.

In a recent citizen suit, *Sierra Club v. Simkins Industries, Inc.*, [847 F.2d 1109 (4th Cir. 1988)] a citizen group sued a Maryland paper mill for violating the Clean Water Act. The citizen group alleged that Simkins was discharging pollutants into the Patapsco River in violation of limitations established in Simkins' permit. The Court first determined that Simkins had, in fact, violated the Clean Water Act and then fined Simkins \$977,000. The Court also ordered Simkins to fully comply with the Clean Water Act in the future. The citizen group was successful in remedying the specific pollution problem caused by Simkins' illegal wastewater discharges and also obtained a tough penalty which should help deter other would-be polluters from violating the law and polluting our environment.

In sum, Congress established citizen suit provisions under the various environmental statutes in order to help ensure that EPA and the regulated entities actually complied with the requirements of those statutes. As a result of the efforts of those who have brought citizen suits, the state of our environment has been improved.

The progress of environmental enforcement is analyzed and reported every year by EPA. Annual documents include:

- **Enforcement Accomplishments Report.** Published every year, usually in January, this report discusses the enforcement activities of the previous fiscal year, including statistics and reports on specific judicial cases.
- **Overview of EPA Federal Penalty Practices.** This annual report includes analysis of the penalties assessed by EPA against violators in cases concluded during the previous fiscal year.

Single copies of either report are available on request by writing to EPA, Office of Enforcement and Compliance Monitoring (LE-133), 401 M Street, S.W., Washington, D.C. 20460.

Environmental Agencies

State and Local Governments

State and local governments have responsibility for enforcing most environmental laws in the area where you live. You can locate them through your telephone directory. In most communities, the responsible agency is the city or county health department. At the state level, there is usually an environmental agency that carries out the pollution-control laws, while an agriculture agency often handles regulation of pesticides.

Principal Offices of EPA

EPA principally operates through ten Regional Offices, which should be able to help answer your questions if your state or local agencies have been unable to do so. Each Region has a staff specializing in each of the environmental programs discussed in this publication. To locate a person who can help you, call on the public affairs office in your EPA Regional Office.

These offices and the states they cover are:

Region 1:	Boston (617) 835-3424	CT, MA, ME, NH, RI, VT
Region 2:	New York City (212) 264-2515	NY, NJ, PR, VI
Region 3:	Philadelphia (215) 597-9370	DE, DC, MD, PA, VA
Region 4:	Atlanta (404) 257-3004	AL, FL, GA, KY, MS, NC, SC, TN
Region 5:	Chicago (312) 353-2073	IL, IN, MI, MN, OH, WI
Region 6:	Dallas (214) 255-2200	AR, LA, NM, OK, TX
Region 7:	Kansas City (913) 757-2803	IA, KS, MO, NE
Region 8:	Denver (303) 564-7666	CO, MT, ND, SD, UT, WY
Region 9:	San Francisco (415) 484-1050	CA, HI, NV, Guam, American Samoa
Region 10:	Seattle (206) 399-1466	AK, ID, OR, WA



EPA Regional Offices

The following is a list of the EPA criminal investigators assigned to each EPA Regional Office:

Law Enforcement Offices

- James L. Prange - Director, OCI 303-236-3215
- Martin J. Wright - Deputy Director, OCI 303-236-3215
- Boston Resident Office (Region 1)..... 617-565-3059
- Robert Harrington, Resident, Agent-in-Charge . FTS 835-3059
- New York Area Office (Region 2) 212-264-8917
- Joseph Russo, Special Agent-in-Charge FTS 264-8917
- Philadelphia Resident Office (Region 3) 212-597-1949
- Robert Boodey, Resident Agent-in-Charge..... FTS 597-1949
- Atlanta Area Office (Regions 4 & 5) 404-347-4885
- Bruce Mirkin, Special Agent-in-Charge FTS 257-4885
- Chicago Area Offices (Regions 5 & 7)..... 312-886-9872
- Louis Halkias, Special Agent-in-Charge..... FTS-886-9872
- Dallas Resident Office (Region 6)..... 214-655-6600
- Thomas Kohl, Resident Agent-in-Charge..... FTS 255-6600
- Kansas City Resident Office (Region 7) 913-551-7060
- Gregory Spalding, Resident Agent-in-Charge .. FTS-276-7060
- Denver Resident Office (Region 8)..... 303-293-1879
- William Smith Resident Agent-in-Charge FTS 330-1879
- San Francisco Resident Office (Region 9) 415-556-7020
- David Wilma, Resident Agent-in-Charge FTS 556-7020
- Seattle Area Office (Regions 9 & 10)..... 206-442-8603
- Dixon McClary, Special Agent-in-Charge FTS 399-8306
- NEIC Investigative Unit (Regions 8 & 9) 303-236-4070
- John West, Special Agent-in-Charge FTS 776-4070
- Federal Law Enforcement Training Center - Glynco, Georgia
- Philip Andrew, Special Agent 912-267-2726
- Agency Training Representative..... FTS 230-2726

State Environmental Enforcement Organizations

Chairs

Directors

Northeast Hazardous Waste Project

Anne Whiteley
Environmental Conservation Legal Advisor
Department of Environmental Conservation
Building One South
103 South Main Street
Waterbury, Vermont 05676
(802) 244-8755

Anita Salzano, Acting Director
Northeast Hazardous Waste Project
Richard J. Hughes Justice Complex
25 Market Street, CN 085
Trenton, New Jersey 08625
(609) 984-4482

Western States Hazardous Waste Project

Douglas J. Martin, Supervisor
Compliance, Enforcement & Planning
Waste Management Section
Nevada Division of Environmental Protection
Capitol Complex
201 South Fall Street
Carson City, Nevada 89710

Roger L. Hartzog, Director
Western States Hazardous Waste Project
1275 West Washington
Phoenix, Arizona 85007
(602) 542-3881

Midwest Environmental Enforcement Association

Rolland Lee
Enforcement Division
Wisconsin Dept. of Natural Resources
P.O. Box 7921
Madison, Wisconsin 53707
(608) 266-1369

Susan L. Sylvester, Director
Midwest Environmental Enforcement
Association
595 State Street
Elgin, Illinois 60123
(708) 742-1249

Southern Environmental Enforcement Network

John Costigan, Chief
Environmental Litigation
Department of Legal Affairs
The Capitol, Suite 907
Tallahassee, Florida 32399-1050
(904) 488-8182

A. Geary Allen, Director
Southern Environmental Enforcement
Network
Office of the Attorney General
State of Alabama
11 South Union Street
Montgomery, Alabama 36130
(205) 242-7369