

# **COASTAL WATERSHED PROTECTION STRATEGY: AN ACTION PLAN FOR THE COASTAL MANAGEMENT BRANCH**

**Coastal Management Branch  
Oceans & Coastal Protection Division  
Office of Wetlands, Oceans and Watersheds  
U.S. Environmental Protection Agency  
401 M Street S.W.  
Washington, DC 20460**

**Abstract:**

This Coastal Watershed Protection Strategy provides the framework the Coastal Management Branch will use to work with our federal, State, local government, public interest and private industry partners to protect, restore and maintain the nation's coastal and estuarine resources. We will work for this mission every day by providing a baseline of support to all coastal watersheds while targeting resources and technical assistance to priority coastal watersheds such as those in the National Estuary Program. We will also work with the Regions and States to encourage consideration of National Estuary Programs and other coastal watersheds identified as national priorities for protection and restoration, in the State Unified Watershed Assessment processes. The Coastal Management Branch will develop our annual work plans based on consideration of the needs identified in the Watershed Restoration Action Strategies developed for priority coastal watersheds. Finally, we will review EPA-State Agreements and Regional Management Agreements to evaluate progress being made towards the environmental and programmatic measures specified for the Coastal Management Branch's programs in the EPA Strategic Plan and annual budget development process.

**Table of Contents:**

Page Nos.

Abstract	i
I. Introduction	1
A. Our Mission	
B. Purpose	
C. Clean Water Action Plan	
D. Background	
II. Coastal Management Branch	4
A. Our Goals and Responsibilities	
B. Our Teams	
C. Our Partners	
III. Priority Coastal Watersheds	9
A. Clean Water Action Plan Unified Watershed Assessments	
B. Watershed Restoration Action Strategies	
IV. Coastal Management Branch FY98 Workplans	10
A. Support for all Coastal Watersheds	11
(i) Build and strengthen coalitions to leverage funding and provide consistent federal guidance and direction for coastal watershed managers and stakeholders.	
(ii) Strengthen the capacity of our partners to protect and restore coastal watersheds by providing training and education, information and funding.	
(iii) Share experience broadly.	
(iv) Provide direction and leadership	

B.	Support for Priority Coastal Watersheds	15
	(i) Build and strengthen coalitions to leverage funding and provide consistent federal guidance and direction for coastal watershed managers and stakeholders.	
	(ii) Strengthen the capacity of our partners to protect and restore coastal watersheds by providing training and education, information and funding.	
	(iii) Share experience broadly.	
	(iv) Provide direction and leadership	
V.	Measuring Our Progress	19
A.	EPA's Strategic Plan/Government Performance Results Act	
B.	Regional Management Agreements	
C.	State/EPA Performance Partnership Agreements	
D.	NEP Biennial Reviews and annual workplans	
E.	NEP Evaluation	

**Attachments:**

A.	EPA Organizational Chart	A-1
B.	Coastal Management Branch Personnel and Contact Information	B-1

## **I. Introduction**

### **A. Our Mission:**

The mission of the Coastal Management Branch is to:

*"Restore, protect and maintain coastal watersheds by building partnerships; strengthening the capacity of our partners; sharing experience broadly; and providing leadership and assistance to support community-based watershed management"*

### **B. Coastal Watershed Protection Strategy**

The purpose of the Coastal Watershed Protection Strategy (CWPS) is to guide the Coastal Management Branch (CMB) in our efforts to:

- (1) provide a baseline of support to all coastal watersheds;
- (2) target resources to priority coastal watersheds;
- (3) implement Administration initiatives within coastal watersheds; and
- (4) integrate local coastal watershed concerns with regional and national coastal watershed concerns.

Although the Coastal Management Branch has always provided support to coastal watersheds in general, we have not always had a clear strategy to guide us in directing our resources to coastal watersheds beyond National Estuary Programs (NEP). This Coastal Watershed Protection Strategy is designed to integrate local, State and Regional coastal environmental priorities into our process for providing support to coastal watersheds in addition to NEPs.

We do not anticipate line item funding in EPA's budget for implementing the CWPS. Rather, the CWPS will provide a framework for determining how to allocate our staff and dollar resources from year to year. As such, it will also provide a basis for leveraging funds from other EPA programs and federal agencies and new EPA funds for coastal protection and restoration activities.

### **C. Clean Water Action Plan**

On February 14, 1998, the Administration released the Clean Water Action Plan (CWAP) which provides a blueprint for restoring and protecting the nation's precious water resources. A key element of the Action Plan is a new cooperative approach to watershed protection in which State, tribal, federal, and local governments, and the public first identify the watersheds with the most critical water quality problems and then work together to focus resources and implement effective strategies to solve these problems. The Action Plan also includes new initiatives to reduce public health threats, improve the stewardship of natural resources, strengthen polluted runoff controls, and make water quality information more accessible to the public.

The Coastal Watershed Protection Strategy will provide the framework for the Coastal Management Branch's implementation of two broad key actions of the Clean Water Action Plan (CWAP) in coastal watersheds:

- ▶ *NOAA and EPA will further develop and support partnerships with State, tribal, and local governments and organizations to provide technical assistance and information to local decision makers in coastal areas. NOAA and EPA, in cooperation with other federal agencies, will broadly share lessons learned from National Estuary Programs and the National Estuarine Research Reserve System. NOAA, in cooperation with USDA, will expand the Nonpoint Education of Municipal Officials program. [CWAP Page 47-48]*
- ▶ *States and tribes should work with public agencies and private-sector organizations and citizens to develop, based on the initial schedule for the first two years, Watershed Restoration Action Strategies, for watersheds most in need of restoration. Federal agencies will focus current financial resources as appropriate to support watershed restoration plans. New federal resources available in FY 1999 will be targeted to support implementation of actions called for in Watershed Restoration Action Strategies. [CWAP Page 80]*

In addition to these two broad key actions, there are numerous Clean Water Action Plan key actions which will be addressed by specific CMB workplans described in Section IV of this Coastal Watershed Protection Strategy.

#### **D. Background:**

Currently CMB develops its annual workplans based on requests or suggestions we receive from Regions, NEPs and other coastal watersheds during national conferences and meetings or individually over the course of the year.

CMB annual workplans include using in-house staff, grantees or hiring contractors to:

- provide training workshops,
- develop guidance manuals or information transfer documents (reports, brochures, fact sheets),
- organize national conferences and meetings,

CMB also dedicates staff time and funds to:

- leverage resources with other federal agencies and EPA programs,
- participate in the development and support implementation of other federal and EPA programs and policies to promote consistency and to ensure that the needs and priorities of coastal watersheds are considered,
- develop partnerships with national organizations concerned about coastal issues, and
- support coastal environmental protection and restoration demonstration projects.

The Coastal Management Branch has provided targeted oversight, guidance and support for the *National Estuary Program* (NEP) since its creation by Congress in the 1987 amendments to the Clean Water Act. Modeled after the Chesapeake Bay Program and the Great Lakes National Program, the NEP employs a partnership approach for managing, protecting, and restoring estuaries of national significance on a watershed basis. There are currently 28 NEPs in eighteen states and Puerto Rico.

Since its inception, the NEP has successfully adapted to new opportunities, challenges and expectations. In fact, EPA used the NEP as a model in developing the Watershed Protection Approach, a strategy that solves water quality and ecosystem problems at the watershed level rather than at the individual waterbody or discharger level. The inherent flexibility of the NEP has enabled evolution from a targeted research program to a national model for effective community-based resource management. Critical milestones in this evolution include:

- the initial expansion from 12 programs to 17 in 1990;
- the addition of four new programs in 1992 under a streamlined process for developing Comprehensive Conservation and Management Plans (CCMPs) in four years rather than five;
- the delegation in 1994 of significant program management authority from EPA Headquarters to the Regions;
- the decision to broaden the NEP to 28 in 1995;
- 17 programs with approved CCMPs by 1997; and
- the recognition that loadings of nutrients and toxins from air deposition is a significant source.

The NEP was created to demonstrate innovative tools and techniques for coastal areas around the nation. While EPA has attempted to expand the number of NEPs receiving targeted assistance, there are hundreds more coastal and estuarine watersheds deserving of support and assistance. The Coastal Management Branch is now in a position to share this wealth of experience with coastal watersheds around the country.

The development of this Coastal Watershed Protection Strategy does not mean divesting attention or assistance from the NEPs, but rather focuses on transferring the lessons we are learning from the NEPs to other coastal watersheds. Because the issues affecting the NEPs are not unique to just those 28 estuaries, working nationwide to solve problems will advance the field of coastal and estuarine management for the NEP and other coastal watersheds. National or broad ranging issues include, but are not limited to, harmful algal blooms, nutrient over enrichment, toxic contamination, air deposition and loss of habitat.

## **II. Coastal Management Branch: the people and the organization**

### **A. Our goals and responsibilities**

To fulfill our mission, the Coastal Management Branch has four objectives: (1) to build partnerships, (2) to strengthen the capacity of our partners, (3) to share experience broadly, and (4) to provide direction and leadership. While our Regional partners have the primary lead for working with our State and local partners, CMB has a supporting role by providing financial resources and technical assistance in consultation with the Regions. Following is a brief description of our responsibilities under each of these goals:

- (1) **To build partnerships with other federal agencies, State and local governments, trade associations and non-governmental organizations.** Our partnerships are designed to: (i) align federal activities and resources to provide coordinated and consistent support to nonfederal partners; (ii) to communicate and share information; (iii) to develop consensus with partners on environmental protection approaches to be implemented; and (iv) to target new partners to further efforts to protect and restore coastal watersheds.
- (2) **To strengthen the capacity of our partners to effectively protect and restore their community's coastal watersheds.** The support we can provide to build the capacity of our partners at the State and local level, as well as nongovernmental organizations, include funding, training and education materials, data and information, and facilitating or brokering new partnerships.
- (3) **To share our coastal watershed experience with our partners and other interested nongovernmental entities within the United States and internationally.** Activities we conduct to share our experiences broadly include: (i) developing tools such as brochures, fact sheets, reports, guidance documents, workshops and conferences; (ii) disseminating tools through direct mailings, the internet, announcements in newsletters and distribution at conferences, workshops and meetings; and (iii) identifying new partners and contacts.
- (4) **To provide direction and leadership to all coastal watershed managers and stakeholders.** Activities we conduct to provide direction and leadership include: (i) providing policy recommendations to EPA managers and other federal partners to promote consistent and effective coastal watershed protection and management; (ii) providing guidance to State and local watershed managers and stakeholders; (iii) facilitating implementation of base programs such as stormwater permitting, total maximum daily loads (TMDL), and coastal nonpoint source controls, in coastal watersheds; and (iv) promoting the visibility of successful coastal watershed programs, such as the National Estuary Programs, at the local, State, Regional and national levels.



## B. Our Teams

To carry out the activities under each of the CMB objectives, the Coastal Management Branch has a Branch Chief, an Executive Officer, and three teams: the Program Management and Implementation Team, the Technical Assistance Team and the Administration Team. Each team has a team leader who is responsible for bringing team members together to: (i) oversee the development of individual projects; (ii) set priorities for projects to be developed; (iii) select project leaders; and (iv) resolve project, team and Branch issues. For the most part, all Branch members participate on both the Program Management and Implementation Team and the Technical Assistance Team. The Branch Chief, the Executive Officer and the Team Leaders comprise the Administration Team. Team Leaders rotate annually and are elected by Branch members. The Executive Officer rotates annually and is selected by the Branch Chief on a volunteer basis.

The Program Management and Implementation Team and the Technical Assistance Team have the following missions:

**Program Management and Implementation Team Mission:** To support the development and implementation of coastal watershed management plans by developing national policies and guidance, and administering the National Estuary Program. Examples of Program Management and Implementation Team activities include developing the Coastal Watershed Protection Strategy and the annual funding guidance for the NEPs.

**Technical Assistance Team Mission:** To provide coastal communities with the guidance, information, and training needed to help them achieve their environmental protection goals. Examples of Technical Assistance Team activities include organizing national conferences and providing training workshops.

**Administration Team:** To raise high priority issues to the Branch Chief on a timely basis, exchange information between teams, and advise the Branch Chief regarding budget, policy and personnel issues with respect to team and Branch missions and activities.

The Executive Officer assists the Branch Chief in prioritizing and delegating Branch assignments and conducts assignments which may involve both teams or which may not fit into either team.

Most of the CMB staff serve as coordinators for one or more National Estuary Programs (NEP). As NEP coordinators they are each responsible for providing guidance and oversight assistance as well as tools and resources needed by EPA Regions, State and local governments, and nongovernmental organizations responsible for carrying out the activities of individual estuary programs. To promote national consistency in management of individual NEPs, coordinators are responsible for sharing information on issues and solutions with each other.

We have also established Regional Liaisons to facilitate communications with and support for the Regions. Regional Liaison responsibilities include: (1) reviewing Regional Management Agreements; (2) reviewing Regional EPA/State Performance Partnership Agreements; (3) reviewing State Clean Water Action Plan Unified Watershed Assessment priorities for restoration and Watershed Restoration Action Strategies; (4) serving as a HQ champion for Regional coastal environmental priorities or initiatives; (5) responding to questions which are not specific to a single NEP; and (6) other activities to be identified by Regions.

Attachment A provides an EPA organizational chart showing CMB's position in the Agency and provides the names and contact information for each member of the Branch. This attachment will be periodically revised as the Branch gains new members, assignments change, or members temporarily or permanently move on to other professional development opportunities.

## C. Our Partners

### 1. EPA Regions

The Coastal Management Branch works with EPA Regions I, II, III, IV, V, VI, IX and X to provide joint management, oversight and support to coastal watershed protection programs along the coasts of the Atlantic and Pacific Oceans, Gulf of Mexico, Great Lakes, Arctic Ocean and the Bering Sea. Regions help shape the national and regional coastal management programs and policies by advising CMB in the development of guidance and informational or educational tools and publications. Regions have primary responsibility for representing the Agency in local, State and regional coastal watershed forums, such as National Estuary Programs and Great Water Body Programs (i.e., Great Lakes, Gulf of Mexico, Chesapeake Bay). Regions provide guidance and oversight to ensure that Agency coastal watershed policies and programs are being implemented as intended on a day to day basis. Regions also advise CMB of issues which may require changes in Agency programs and policies to improve effective and efficient use of government resources for the purpose of protecting and restoring coastal watersheds.

### 2. Coastal States, communities, and nongovernmental organizations interested in coastal issues

While the Regions have the lead for working with State and local partners, CMB often provides direct technical assistance to priority coastal watersheds, such as the NEPs, in consultation with our Regional partners. We also work with a variety of national associations such as the Association of National Estuary Programs (ANEP), the Coastal States Organization (CSO), and the Coastal Watershed Advisory Committee of the National Association of Counties (NACo).

We look to our State and local partners to advise us regarding their needs for effective protection and restoration of their coastal resources. In addition, we consider their concerns regarding programs and policies which complicate or obstruct their ability to carry out their coastal protection and restoration activities. We also partner with NGOs to sponsor restoration projects, conferences and training workshops. The CWP strategy will help CMB identify additional partners and mechanisms for providing assistance to coastal communities.

### **3. Agency/Administration Initiatives**

EPA and other federal agencies are increasingly collaborating to more effectively address a number of environmental problems. CMB participates in a number of inter-agency and intra-agency groups to ensure that the concerns and needs of coastal watershed managers and coastal communities are considered in the development and implementation of such initiatives as:

- ▶ Clean Water Action Plan
- ▶ Smart Growth/President's Council on Sustainable Development
- ▶ Air Deposition
- ▶ National Harmful Algal Bloom Research & Monitoring Strategy
- ▶ Year of the Ocean

Other Administration or Agency initiatives which CMB tracks and looks for opportunities to implement in coastal watersheds include:

- ▶ Beaches Environmental Assessment Closure and Health (BEACH) Program
- ▶ Environmental Monitoring for Public Access and Community Tracking (EMPACT)
- ▶ Common Sense Initiative
- ▶ Children's Health
- ▶ Project XL/XL Communities
- ▶ Government Reinvention

### **4. Other EPA Offices and Federal Agencies**

To align federal activities and resources to provide coordinated and consistent support to nonfederal partners and to facilitate implementation of base programs in coastal watersheds, we must increase our efforts to work cooperatively with other EPA Offices and federal agencies. Some of the EPA Offices we are currently working with include:

- ▶ Office of Wastewater Management: State Revolving Fund, Animal Feeding Operations, Copper Brakepads, Stormwater permitting
- ▶ Office of Science & Technology: Nutrient Criteria, BEACH Program
- ▶ Office of Ground Water & Drinking Water: Source Water Protection

*Coastal Watershed Protection Strategy:  
An Action Plan for the Coastal Management Branch*

- ▶ Office of Wetlands, Oceans & Watersheds: Coastal Nonpoint Pollution (CZMA section 6217), Nonpoint Source Pollution (CWA section 319), TMDLs, coastal monitoring and assessment, wetlands restoration and protection
- ▶ Office of Air and Radiation: Air Deposition, Global Warming, Sea level Rise
- ▶ Office of Policy, Planning & Evaluation: Smart Growth, Community-based Environmental Protection
- ▶ Office of Research and Development: EMPACT, Water Research Priority setting, NSF grants, ECOHAB, monitoring and assessment, and environmental indicators
- ▶ Great Waters Programs: harmful algal blooms, air deposition, eutrophication, coastal environmental indicators

Some of the federal agencies we consider to be our partners in coastal management and protection include:

- ▶ National Oceanic and Atmospheric Administration
  - National Marine Fisheries Service
  - Coastal Zone Management Program
  - Sanctuaries and Reserves
  - Harmful Algal Blooms
- ▶ Army Corps of Engineers
- ▶ Department of Transportation
  - Maritime Administration
  - U.S. Coast Guard
- ▶ Department of Interior
  - U.S. Fish and Wildlife Service
  - Bureau of Land Management
  - U.S. Geological Service
- ▶ U.S. Department of Agriculture
  - Forest Service
  - Natural Resources Conservation Service
  - Agricultural Research Service
- ▶ Food and Drug Administration
  - shellfish and fish consumption advisories
  - *Pfiesteria*
- ▶ U.S. Public Health Service
  - shellfish and fish consumption advisories
  - recreational waters
- ▶ Coastal America: A partnership of ten federal agencies responsible for coastal restoration and protection or whose activities may impact coastal resources.

Activities include: joint development of regulations or programs designed to protect and restore coastal resources; collaboration in implementing coastal programs, such as distribution of federal funds for coastal protection and restoration; and co-sponsoring workshops or national meetings and conferences for coastal managers and researchers.

### III. Priority Coastal Watersheds

This strategy provides a framework for targeting assistance from the Coastal Management Branch to priority coastal watersheds in such a way as to be consistent with Regional, State and local needs. While we intend to provide a baseline of support to all coastal watersheds through national conferences and provision of guidance and technology transfer documents, our ability to provide training and other on-site technical assistance must be targeted to a limited number of coastal watersheds.

To identify priority coastal watersheds, the CWPS will rely on the Unified Watershed Assessments to be conducted by the States under the Clean Water Action Plan. Specifically, the key actions are:

- ▶ *"States should work with other appropriate agencies, governments, organizations, and the public to create Unified Watershed Assessments that identify watersheds that do not meet clean water and other natural resource goals and where prevention action is needed to sustain water quality and aquatic resources. Federal agencies will ask state conservationists and state environmental agency leaders to jointly convene this process and to involve a full range of appropriate parties." [page 77]*
- ▶ *"By October 1998, states and tribes should work with appropriate agencies, organizations, and the public to define watershed restoration priorities, with special attention to watersheds most in need of restoration and protection. This schedule must be coordinated with section 303(d) of the Clean Water Act and provide an opportunity to bundle Total Maximum Daily Loads on a watershed scale. The schedule should identify the highest priority watersheds to be addressed in the first two years (through 2000)." [page 78]*
- ▶ *"States and tribes should work with public agencies and private-sector organizations and citizens to develop, based on the initial schedule for the first two years, Watershed Restoration Action Strategies, for watershed most in need of restoration. Federal agencies will focus current financial resources as appropriate to support watershed restoration plans. New federal resources available in FY 1999 will be targeted to support implementation of actions called for in Watershed Restoration Action Strategies." [page 80]*

The Coastal Management Branch will work through the Regions (and others) to assist with development of the State Unified Watershed Assessments. CMB will review State Unified Watershed Assessments to compare coastal State priorities to national priorities and to target our resources and technical support accordingly. National priorities include, but are not limited to, the National Estuary Programs, the National Estuarine Research Reserve System, National Marine Sanctuaries, interstate and international coastal waters, Clean Air Act Great Waters, and American Heritage Rivers.

The Coastal Management Branch will review the State Watershed Restoration Action Strategies to target our financial resources as appropriate to help implement the actions called for in the State Watershed Restoration Action (WRA) Strategies. CMB will also use the State WRA Strategies to leverage resources with other EPA programs and other federal agencies for coastal watershed restoration and protection. CMB will prepare annual workplans based on consideration of the State WRA Strategies and distribute the workplans for Regional comment to facilitate consistency between Regional and CMB coastal watershed activities. Requests for CMB support received directly from coastal watersheds not included in State WRA Strategies will be deferred to the Regions, unless such requests are determined to be consistent with national priorities.

#### **IV. Coastal Management Branch FY98 Workplans**

For FY 1998 and prior years, CMB developed its annual workplans based on requests or suggestions we receive from Regions, NEPs and other coastal watersheds during national conferences and meetings or individually over the course of the year. Based on this information, EPA has identified activities we will carry out in to support State and local efforts to protect and restore coastal watersheds. Beginning in FY 1999, CMB's workplan development will be developed using the Unified Watershed Assessments and Watershed Restoration Action Strategies for coastal States and will be annually updated to reflect new or revised State Watershed Restoration Action Strategies. Where appropriate, we have indicated workplans which implement specific Clean Water Action Plan [CWAP, page #] key actions.

In general, CMB annual workplans include using in-house staff, grantees or hiring contractors to:

- provide training workshops,
- develop guidance manuals or information transfer documents (reports, brochures, fact sheets),
- organize national conferences and meetings,

CMB also dedicates staff time and funds to:

- leverage resources with other federal agencies and EPA programs,
- participate in the development of other federal and EPA programs and policies to promote consistency and to ensure they consider the needs and priorities of coastal watersheds,
- develop partnerships with national organizations concerned about coastal issues, and
- to support coastal environmental protection and restoration demonstration projects.

The following descriptions of CMB's FY 1998 workplans are organized by (1) activities which support all coastal watersheds and (2) activities which support priority coastal watersheds.

**A. Support for All Coastal Watersheds**

1. **Build and strengthen coalitions** to leverage funding and provide consistent federal guidance and direction for coastal watershed managers and stakeholders.

**Program Management & Implementation Team**

- ▶ **Coordinate activities with other federal agencies** (e.g., NOAA, DOT, USDA, Coastal America, Clean Water Action Plan, National Harmful Algal Bloom Research and Monitoring Plan) - CMB will participate in a variety of interagency efforts as well as partnerships with specific agencies to improve efforts to protect and restore coastal watersheds. Examples include working with the interagency group to implement the National HAB Research and Monitoring Plan to support coastal State HAB monitoring and response programs or working with NOAA to host a joint EPA NEP and NOAA Coastal Ocean Programs meeting.
- ▶ **Coordinate with other EPA programs** (e.g., TMDLs, NPS, State Revolving fund, Animal Feeding Operations Strategy, Nutrient Strategy, BEACH Program, Air Deposition) - CMB will participate in a variety of EPA programs to improve Agency efforts to protect and restore coastal watersheds. Examples include working with the Office of Wastewater Management to provide guidance to States to encourage their use of SRF funds to implement CCMPs and other coastal restoration and protection projects or working with the Office of Research and Development to identify research priorities for the protection and restoration of coastal watersheds.

**Technical Assistance Team**

- ▶ **Support National Association of Counties Coastal Watershed Advisory Committee activities** - The Coastal Management Branch has given a grant to NACo to establish a coastal watersheds project. This project has been evolving for three years and includes support for a Coastal Watershed Advisory Committee comprised of coastal commissioners, numerous workshops and technical assistance activities, newsletters, and support of a broader range of watershed projects.
- ▶ **Co-sponsor Smart Growth conferences** - CMB was one of the major sponsors and creators of the first "Partners for Smart Growth Conference." Approximately 750 people attended the Baltimore, MD conference in December 1997. There have been a number of requests for additional conferences. The next national conference is planned for Austin, TX in December 1998. [CWAP pg 64]
- ▶ **Year of the Ocean activities** - In recognition of the importance of the marine environment, 1998 has been declared as the Year of the Ocean. EPA is working jointly with NOAA and many other federal, state and local programs to raise awareness on the role it plays in our lives. [CWAP page 48]

- ▶ **1998 Estuaries Day (Oct)** - The purpose of National Estuaries Day is to increase awareness of the importance of estuaries, highlight water quality issues, focus attention on designated coastal areas such as National Estuary Program (NEP) and National Estuarine Research Reserve sites, and provide an opportunity for EPA and NOAA to coordinate at the national and local levels. While national in scope, a kick-off event will be held in Narragansett Bay. CMB will coordinate with NOAA and the Association of National Estuary Programs (ANEP) to plan this event and produce materials to educate the public about these special places.
2. **Strengthen the Capacity of Our Partners** to protect and restore coastal watersheds by providing training and education, information and funding.

Program Management & Implementation Team

- ▶ **Finance Workbook and Workshops** - In August 1996, OCPD issued the document, "Beyond SRF: A Workbook for Financing CCMP Implementation." The workbook describes traditional and non-traditional financing mechanisms. In FY 1998, OCPD will explore the need for updates or enhancements to the workbook, as well as interest among the NEPs and other coastal watersheds, in conducting workshops on the financing techniques described in the workbook.

Technical Assistance Team

- ▶ **Septic System in Coastal Waters fact sheet** - Failing septic systems is a major contributing factor to the downgrading conditions in estuaries. This fact sheet describes how septic systems affect coastal waters and estuaries, and provides examples of corrective measures taken by Puget Sound and Sarasota Bay NEPs to protect and enhance water quality. Available in both English and Spanish.
- ▶ **Index of Watershed Indicators (IWI)** - CMB will be involved in developing two new data layers focusing on the eutrophic condition of our nation's estuaries and atmospheric deposition of pollutants. The IWI is a tool for resource managers and the general public that characterizes the health of our nation's watersheds.
- ▶ **Shellfish indicator support** - CMB has supported two workshop panels since 1993 which investigated the state of shellfish and hard clams in particular. They have also examined the feasibility of using aquaculture to restore estuarine habitat. In FY 1998, CMB will participate on a task force which was formed to investigate why hard clam populations are declining or are increasingly sick.
- ▶ **Indian River Lagoon (IRL) Nitrogen Model of National Demand** - The IRL NEP built a decision model to provide quick information to decision-makers on where septic and nutrient concentrations are exceeding acceptable limits, thus giving the local and State governments a way of prioritizing major public



expenditures for sewer works. CMB plans to work with the Water Management District to finish the project this year and then share the model with all NEPs and other coastal watersheds.

- ▶ **Benefits valuation database and workshop** - CMB has been supporting coastal resource valuation efforts since 1994. Products include development and field testing in pilot watersheds of a valuation handbook which was designed to help coastal watershed committees decide which sort of valuation method they would use in local studies. We are also working with other EPA programs and federal agencies to begin including coastal watersheds in the national assessment of the benefits of the Clean Water Act. In FY 1998, CMB will begin planning for a national Resource Valuation Workshop to help coastal managers share methodologies for valuing coastal resources. We also are working on a national database to make available the data resulting from various EPA efforts to estimate the benefits of the Clean Water Act and coastal watershed case studies. Access to this data should facilitate valuation studies in all coastal watersheds.

3. **Share our coastal watershed experience** with our partners and other watershed managers and stakeholders within the United States and internationally.

Technical Assistance Team

- ▶ **Demonstration Project Fact Sheets** (Coastlines inserts) - The purpose of these fact sheets is to provide information and lessons learned from coastal restoration and protection demonstration projects carried out in NEPs. CMB provides funding for the contractor to work directly with interested NEPs to prepare 3-4 fact sheets a year and distribute them as inserts in Coastlines.
- ▶ **Coastal Technology Transfer Conference & Proceedings** - A conference, potentially co-sponsored by EPA and NOAA, will be held in 1999 to provide a forum for an exchange of information concerning issues facing estuaries and coastal watersheds. Discussions will focus on a few key issues, and presenters will include representatives from the NEPs, National Estuarine Research Reserves, and State Coastal Zone Management Programs (and potentially other coastal managers). Proceedings from the conference will be available on the EPA/NEP webpage (referred to as Coastal Cookbook II). CMB will form a workgroup with NOAA and NEP representatives to plan the conference.
- ▶ **Oceans & Coastal Protection Division Display of Programs** - The Technical Assistance Team has created a display that portrays issues surrounding coastal protection. Many of the programs and activities within the Oceans and Coastal Protection Division will be featured.
- ▶ **The Coastal Society Conference** (Williamsburg, VA, July 98) - CMB co-sponsored the Coastal Society Conference along with a variety of federal and non-governmental organizations. Working with our partners we conducted three

panels at the conference: *Pfiesteria* and other Harmful Algal Blooms; Air Deposition in Coastal Waters; and Aquatic Nuisance Species. CMB also held an NEP Directors meeting in conjunction with this conference.

- ▶ **Coastal Zone 99** - The Coastal Zone 99 conference is scheduled for July 25-30, 1999 in San Diego, CA. CMB will be involved in developing the conference program.
  - ▶ **Participate on the OWOW Outreach Support group** - CMB will continue to participate on the OWOW Outreach Support Team to exchange ideas and information concerning coastal watershed issues and to coordinate planning for national or regional meetings and conferences with other partners in OWOW. In addition, CMB will work to ensure that coastal and estuarine issues are addressed as appropriate in OWOW products.
  - ▶ **Maintain and update coastal and estuarine information available on the OWOW homepage** - This activity involves participating on OWOW's Internet Team; assisting with the organization and management of the OCPD web site; staying abreast of important marine, coastal, and estuarine links; and posting and updating relevant EPA documents. Recent additions to the OCPD web site include information about *Pfiesteria*, the National Dredging Team, and the Year of the Ocean, an enhancement of the NEP home page, and a web library of NEP-related graphics. Plans for the near future include an air deposition page, a page focusing on the health of America's coasts, and a re-design of the OCPD home page.
  - ▶ **Water Environment Federation Watershed 98 Conference** - OCPD organized a panel entitled, "The National Estuary Program: Applying Lessons Learned from EPA's Flagship Coastal Watershed Protection Program to other Watersheds," for the WEF Conference. The panel discussed the importance of the National Estuary Program as one of the earliest resource protection programs to be based on a watershed approach. This retrospective on the NEP's first decade will be accompanied by success stories from several of the estuary programs, and examples of how the lessons learned from these successes are being shared with other watersheds.
4. **Provide Direction and Leadership** to all coastal watershed managers and stakeholders

Program Management & Implementation Team

- ▶ **Complete the Coastal Watershed Protection Strategy** - CMB is developing this strategy to guide our resource allocation process between activities which are targeted to priority coastal watersheds and those which support all coastal watersheds. We are developing this strategy in

consultation with our partners in the Regions, other OWOW programs and NOAA's Office of Coastal Resource Management.

- ▶ **Review Regional Management Agreements** - The purposes of the Regional Management Agreements (RMAs) are to: articulate program priorities; establish performance commitments; help tie the national water program to environmental results; and participate in GPRA/Multi-Year Planning . CMB will review the RMAs for Regions I, II, III, IV, V, IV, IX, and X.
- ▶ **Review legislative proposals** affecting coastal and estuarine management - CMB will assist in developing the Administration's position on relevant legislative proposals.
- ▶ **Support Regional and State *Pfiesteria* response activities** - CMB activities include working with NOAA and other federal agencies to implement research and monitoring priorities which reflect State needs, developing *Pfiesteria* fact sheets that can be used by all concerned States, working with NOAA to coordinate the two Agencies' transfer of funds to States, and serving as an advisor to a Society for Applied Anthropology fellow funded by OPPE who will work with stakeholders in the Pocomoke River watershed to identify common goals and concerns and to build a consensus approach for responding to *Pfiesteria* outbreaks. [CWAP pg 46]
- ▶ **Air Deposition Activities** - CMB will assist coastal watershed managers to define the air deposition issues within their watersheds, both for nitrogen and toxic chemicals. We will provide opportunities for monitoring and research to answer questions on how air pollution is affecting coastal waters, sources of the pollution, and solutions to the problem. We will also provide tools for coastal watersheds to deal with water quality issues resulting from air deposition. CMB will work on pilot TMDLs for mercury and nitrogen; find other solutions through Federal, State and local laws and incentives to reduce air deposition. [CWAP pg 59]

#### **B. Support for Priority Coastal Watersheds**

Prior to the State Unified Watershed Assessments, CMB has not had a well-structured process for identifying priority coastal watersheds beyond National Estuary Programs. We have periodically solicited the Regions for guidance on where to direct targeted assistance to coastal watersheds in addition to NEPs. Our efforts to date have focused primarily on providing targeted assistance to the NEPs. We expect our integration of the Clean Water Action Plan Unified Watershed Assessments and the Watershed Restoration

Action Strategies prepared by coastal states into this Coastal Watershed Protection Strategy will vastly improve our efforts to support other priority coastal watersheds.

1. **Build and strengthen coalitions** to leverage funding and provide consistent federal guidance and direction for coastal watershed managers and stakeholders.

Program Management & Implementation Team

- ▶ **Work with the Association of National Estuary Programs (ANEP)**- CMB will support appropriate activities in the current grant, such as developing a report to the nation to inform the public on NEP issues, educate other partners regarding the Association and its activities, and will assist in coordinating upcoming NEP or coastal workshops and conferences.
2. **Strengthen Capacity of Our Partners** to protect and restore coastal watersheds by providing training and education, information and funding.

Program Management & Implementation Team

- ▶ **National Indicators Project**- Each NEP conducts environmental monitoring designed to measure progress toward the goals in its CCMP. In FY1997, OCPD examined which parameters appear to be common across NEP monitoring programs. In FY 1998, OCPD will continue this effort by working with the NEPs to determine whether data compiled by individual NEPs can also be compiled into statements of environmental progress for the NEP as a whole.
- ▶ **Regional NEP coordinators workshop** - CMB will hold a workshop if necessary for National Estuary Program Regional coordinators to discuss issues regarding CCMP development and implementation, EPA guidance and policy issues, and other items as requested.
- ▶ **Analyses of Post-CCMP Institutional Arrangements** - Many NEPs have conducted an analysis of potential institutional mechanisms for overseeing the implementation of their management plans. Mechanisms include creating an independent non-profit to establishing an office within an existing organization. In FY 1998, OCPD will compile examples of the analyses conducted by NEPs and the process used by various NEPs to select an appropriate mechanism.

Technical Assistance Team

- ▶ **RESOLVE workshops** - CMB, with RESOLVE, Inc., has developed a consensus building and multi-party decision making training course. This two to three day course provides management conference participants with the tools and skills for negotiation and facilitation.
- ▶ **Local Government workshops** - The purpose of the local government workshops is to assist local officials in protecting coastal resources by providing information on both regulatory and non-regulatory tools available to them for

resource protection, including innovative zoning ordinances, land acquisition techniques, tax incentives, etc. Local and state government officials, planners, public works and health officials, scientific and technical personnel, and others involved in land and water resource management and protection.

- ▶ **Volunteer monitoring workshops** - The objective of these workshops is to promote, encourage and improve volunteer monitoring in the estuarine environment by providing a two and half day workshop covering all aspects of managing a volunteer group.
- ▶ **Monitoring workshops** - CMB provides assistance to NEPs in development of their comprehensive, integrated, regional monitoring programs through a series of workshops designed to focus on the framework outlined in the guidance document.
- ▶ **GIS maps of NEP study areas** - EPA and the Center for Marine Conservation (CMC) are working jointly on a project to map Marine and Coastal Protected Areas (MACPAs) in a Geographic Information Systems (GIS) format. Mapped MACPAs include National Estuary Program study areas, National Estuarine Research Reserves, National Marine Sanctuaries, National Parks, National Wildlife Refuges, and other federally managed or protected marine and coastal areas. The GIS data will be free and available for download from the world wide web.
- ▶ **Directors' Meeting with NOAA (completed)** - CMB worked with NOAA to sponsor a joint meeting in March 1998 between EPA's NEPs and NOAA's Coastal Zone Management Program, National Estuarine Research Reserve System, and National Marine Sanctuaries. In conjunction, we sponsored a national meeting for EPA NEP coordinators and an EPA/NEP Directors meeting. We are exploring a joint conference to exchange information on coastal management in conjunction with the Spring 1999 meetings.

3. **Share our coastal watershed experience** with our partners and other watershed managers and stakeholders within the United States and internationally.

Technical Assistance Team

- ▶ **Internet support to host web pages and post documents for NEPs** - This activity involves providing EPA server space and technical assistance to any NEP that would like these services. An example is the conversion of a multi-media CD ROM produced by Indian River Lagoon into a web site. This project is still in progress, but should become available soon at:  
<http://www.epa.gov/OWOW/oceans/lagoon/>
- ▶ **NEP success stories on-line (completed)** - CMB prepared information on NEP success stories and posted it on the EPA NEP homepage.

4. **Provide Direction and Leadership** to coastal watershed managers and stakeholders.

Program Management & Implementation Team

- ▶ **Administer the National Estuary Program** - in consultation with the Regional NEP coordinators, CMB provides oversight and guidance to the 28 individual NEPs around the country. The objective is to help them develop and implement their Comprehensive Conservation and Management Plans to protect and restore their estuaries.
- ▶ **Conduct NEP evaluation** - CMB has contracted with Westat, Inc. to conduct an evaluation of the NEP. The contractor will analyze the organization, operation, and implementation of the NEP through a comprehensive review of the 28 programs.
- ▶ **Conduct NEP biennial reviews** - In FY 1997, OCPD conducted the first review of NEPs designed to evaluate progress of individual programs in implementing their management plans (CCMPs), and to make decisions regarding continued EPA funding. The next biennial review will be conducted in FY 1999 and will include Tiers I, II, and III. In spring 1998, OCPD will issue guidance on the next review process.
- ▶ **Complete FY 1998 NEP annual funding guidance** - CMB prepared guidance for the Regions and NEPs which announces the level of funding for each NEP and provides policy guidance and program requirements as appropriate.
- ▶ **Revise NEP Primer and provide Spanish translation** - The Primer (first published in 1992) needs to be revised in light of the Coastal Watershed Strategy and to reflect lessons learned from the National Estuary Program that can be replicated by other coastal watershed communities in their efforts to protect and manage their resources. In order to reach a broader audience, the Primer will also be published in Spanish.

Technical Assistance Team

- ▶ **Complete NEP Report to Congress** - The Technical Assistance Team will be preparing a Report to Congress on the National Estuary Program highlighting the 28 individual programs and common challenges they face. The report also will examine the future direction envisioned for the National Estuary Program.

## **V. Measuring Our Progress: Achieving Environmental Results**

This section will describe the Coastal Management Branch's approach to measuring progress towards our coastal restoration and protection goals and objectives. Our approach is integral to the EPA Strategic Plan and relies on existing reporting mechanisms for State/EPA Performance Partnership Agreements, Regional Management Agreements and the Government Performance Results Act.

### EPA's Strategic Plan, September 1997

As required under the Government Performance and Results Act (GPRA), the EPA Strategic Plan describes the Agency's mission and ten broad environmental goals that will serve as the framework for the Agency's planning and resource allocation decisions. Each of the ten goals has measures and indicators that will be used to evaluate the Agency's progress in achieving the goals. Most of the activities of CMB are contained in Goal #2.

*Goal: "Clean and Safe Water": All Americans will have drinking water that is clean and safe to drink. Effective protection of America's rivers, lakes, wetlands, aquifers, and coastal and ocean waters will sustain fish, plants, and wildlife, as well as recreational, subsistence, and economic activities. Watersheds and their aquatic ecosystems will be restored and protected to improve human health, enhance water quality, reduce flooding, and provide habitat for wildlife.*

#### **Objectives:**

- ▶ *By 2005, protect human health so that 95 percent of the population served by community water systems will receive water that meets drinking water standards, consumption of contaminated fish and shellfish will be reduced, and exposure to microbial and other forms of contamination in waters used for recreation will be reduced.*
- ▶ *Conserve and enhance the ecological health of the nation's (state, interstate, and tribal) waters and aquatic ecosystems -- rivers and streams, lakes, wetlands, estuaries, coastal areas, oceans and groundwater -- so that 75 percent of waters will support healthy aquatic communities by 2005.*
- ▶ *By 2005, pollutant discharges from key point sources and nonpoint source runoff will be reduced by at least 20 percent from 1992 levels. Air deposition of key pollutants impacting water bodies will be reduced.*

A combination of program output and environmental outcome measures will be used to measure progress towards meeting the clean water goal. These measures will be reported in annual budget requests, Regional Management Agreements and EPA-State Agreements.

### Annual Budget Requests

To develop budget requests for implementing the EPA Strategic Plan, EPA identifies annual performance goals. The 1998 - 1999 annual performance goals relevant to the Coastal Management Branch are presented in the attached table.

### Regional Management Agreements

Beginning in FY 1996, the Office of Water has established Regional Management Agreements with the Regional Water/Ecosystem Offices or Divisions which are updated annually. The purposes of the Agreements are to:

- 1) clearly articulate our mutually agreed upon program priorities;
- 2) establish performance commitments that reflect the mix of environmental goals unique to each Region; and
- 3) help the national water program, already a leader in this area, toward work that we can increasingly and more strongly tie to environmental results.

The Coastal Management Branch reviews Regional Management Agreements to determine the extent to which NEPs and other coastal watersheds are being considered as priorities by the Region.

### National Environmental Performance Partnership System (NEPPS)

Implementation of performance partnerships began in FY 1997, giving States a stronger role in priority setting, focusing scarce resources on the highest priorities, and tailoring the amount and type of EPA oversight to an individual State's performance. In accord with this initiative, EPA has new performance partnership grant authority that allows States to combine funds from multiple EPA grants to address their highest environmental priorities across all media; link program activities more effectively with environmental goals and program outcomes, and carry out innovative pollution prevention, cross media, ecosystem and community-based strategies. EPA-State Agreements include a set of core performance measures that were developed to track State progress in achieving the Clean and Safe Water goals and objectives identified in EPA's Strategic Plan. The Coastal Management Branch will review EPA-State Agreements for coastal States to determine the extent to which NEPs and other coastal watersheds are considered to be priorities for the States and Regions.

### Environmental Indicators

The core environmental indicators which should be reported in the Regional Management Agreements and EPA-State Agreements include:

- ▶ % of assessed waterbodies that protect public health and the environment by supporting designated uses.



*Coastal Watershed Protection Strategy:  
An Action Plan for the Coastal Management Branch*

<b>FY 1999 Budget Request Key Performance Goals</b>	<b>1998</b>	<b>1999</b>
<i>Coastal Management Branch Measures</i>		
National Estuary Program Comprehensive Conservation and Management Plans completed	19 CCMPs	24 CCMPs
Biennial Review of first NEPs	12 NEPs	
Issue a report on the use of atmospheric and bioaccumulation models to assess extent of air deposition in estuaries and effectiveness of potential controls		1 report
Evaluate effects of air deposition on estuaries	1 report	
<i>Other EPA Program Measures</i>		
Reduce the number of point and nonpoint sources contributing to the total load of fecal contamination in Gulf shellfish growing waters in two priority Gulf coastal watersheds		2 watersheds
Provide funding support to community-based projects for watershed restoration including restoration of wetlands and river corridors in 160 watersheds (an increase of 110 from 1998)	50 watersheds	160 watersheds
States funding nonpoint source and estuary projects with Clean Water State Revolving Funds	18 States	30 States
States that upgrade NPS programs to reflect 9 key elements	5 States	10 States
States/Territories with approved CZARA NPS programs	29 States	
As part of the Clean Water Action Plan, all States will be conducting or have completed unified watershed assessments, with support from EPA, to identify aquatic resources in greatest need of restoration or prevention activities.		50 States
States submit implementation plans to EPA that describe the processes for implementing TMDLs developed for waters impaired solely or primarily by nonpoint sources		25 States

While CMB is not directly responsible for all of the performance goals presented above, we will work to help ensure that the interests and concerns of the NEPs and other coastal watersheds are considered by States, Regions and other EPA programs.

*Coastal Watershed Protection Strategy:  
An Action Plan for the Coastal Management Branch*

- ▶ % of assessed rivers and estuaries with healthy aquatic communities.
- ▶ % change of selected substances found in surface waters.

Additional coastal environmental indicators which may be reported are:

- ▶ acres of wetlands protected or restored
- ▶ miles of fish passage restored
- ▶ acres of submerged aquatic vegetation restored
- ▶ miles of riparian forest buffers planted
- ▶ acres of shellfish beds open
- ▶ reduction in number of days beaches were closed compared to the previous year

This data is being collected by States, local environmental and health agencies, and volunteer monitoring groups or other nongovernmental organizations. For example, some National Estuary Programs have developed nutrient reduction goals and water quality chemical and biological indicators. While such data may not be aggregated at the State, Regional or national level due to differences in reporting methodologies, such data should be reported at the watershed level if it is available. Regions should look to the annual workplans, quarterly progress reports and other project reports submitted by the National Estuary Programs or other coastal watershed programs supported by the Region for information on measurable environmental improvements which could be incorporated into the Regional Management Agreements and EPA-State Agreements.

#### National Estuary Program Evaluation Efforts

As one of EPA's flagship watershed protection/community-based environmental protection programs, the lessons learned from the National Estuary Program are critical to our ability to help other coastal communities successfully develop watershed protection programs and to leverage resources with other federal agencies and other EPA programs for coastal restoration and protection. To better understand the achievements and lessons learned realized from the NEP, we initiated three evaluation processes: NEP Annual Work Plans, the NEP Biennial Review and the NEP Evaluation.

##### **NEP Annual Work Plans**

NEP Annual Work Plans are submitted to the Regions every year by the NEPs as part of the NEP grant process. CMB reviews these annual work plans to assess the progress made by NEPs while they are developing their CCMPs as well as by those implementing their CCMPs.

##### **NEP Biennial Review**

The NEP Biennial Review is designed to evaluate the progress of individual NEPs in implementing their CCMPs. The results of these individual reviews are used to determine appropriate funding levels as well as to identify areas for improvement and successful approaches which could help other NEPs and watershed programs. The Biennial Review is

*Coastal Watershed Protection Strategy:  
An Action Plan for the Coastal Management Branch*

conducted every two years once an NEP has been receiving EPA support for post-CCMP activities for four years.

The first Biennial review each NEP undertakes is expected to be the most intensive as that sets our baseline for a comprehensive assessment of each program's achievements and status. Subsequent Biennial Reviews are expected to build on the first Review by focusing on how each NEP is addressing any weaknesses identified in the previous Review and other accomplishments which have taken place since the last Review. Tiers I and II NEPs underwent their first Biennial Reviews in FY 1997. In FY 1999, Tier III NEPs will undergo their first Biennial Review and Tiers I and II will have their second Review.

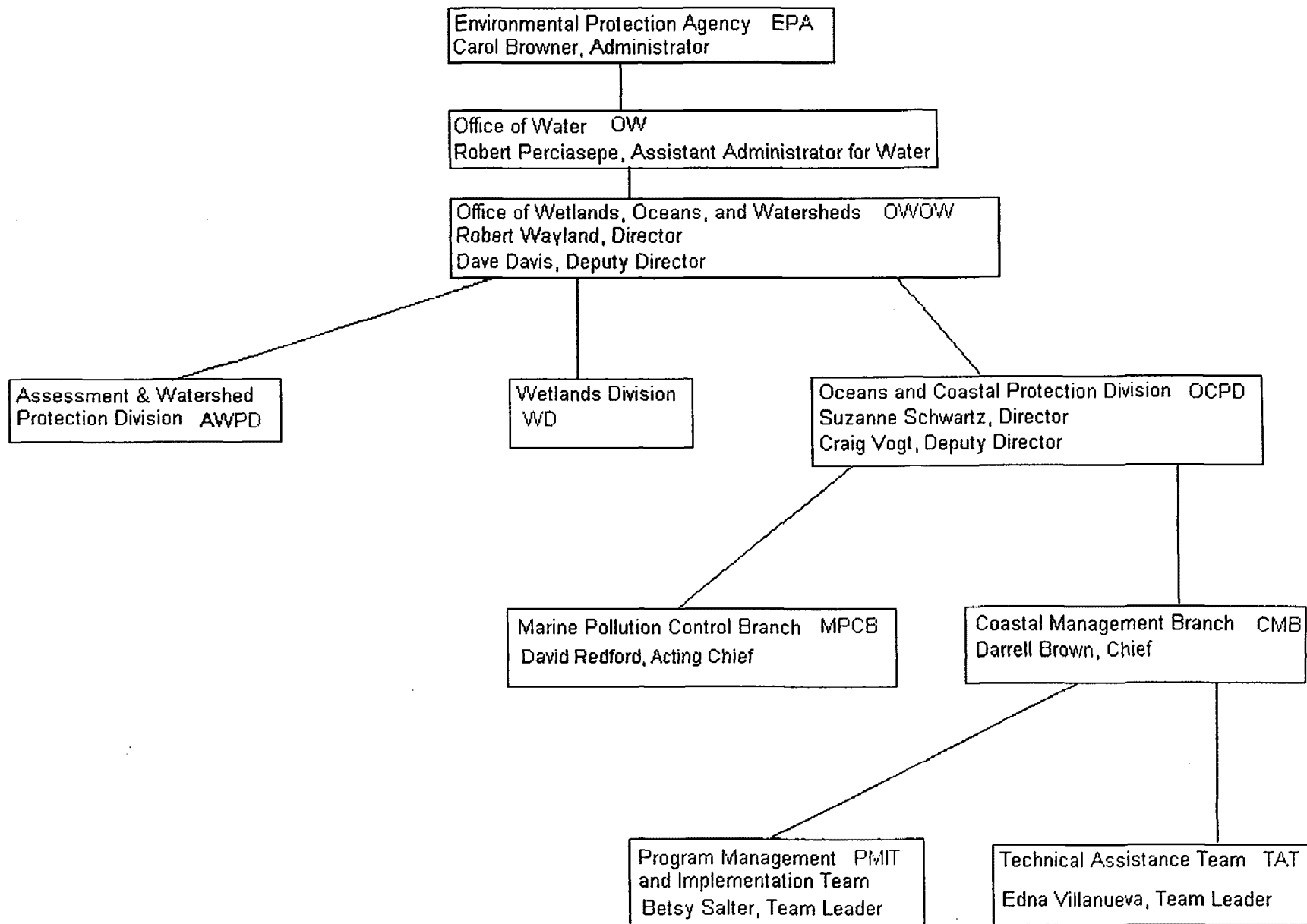
The NEP Biennial Review has proven to be a very useful process for EPA's management of the overall NEP as well as for individual NEP's self-evaluation and communication of progress to their communities. Lessons learned from the first Biennial Review process are provided in the report, "The Biennial Review of National Estuary Programs: Highlights from the First Round of Reviews."

#### **NEP Evaluation**

The NEP Evaluation is designed to provide a snapshot of the effectiveness of the overall National Estuary Program and to help EPA identify areas for improvement in terms of how we support and manage the program. For example, are there issues or barriers faced by most of the NEPs that require new EPA guidance or involvement to resolve or is the NEP successfully using the watershed approach to protect and restore estuarine resources? It is not intended to evaluate or compare individual NEPs. The NEP Evaluation is being conducted by a contractor and should be completed by December 1998. We believe the results from the NEP evaluation will significantly improve CMB's ability to support coastal and estuarine restoration and protection.

#### **VI. Conclusions**

This Coastal Watershed Protection Strategy provides the framework the Coastal Management Branch will use to work with our federal, State, local government, public interest and private industry partners to protect, restore and maintain the nation's coastal and estuarine resources. We will work for this mission every day by providing a baseline of support to all coastal watersheds while targeting resources and technical assistance to priority coastal watersheds. We will also work with the Regions and States to encourage the consideration of National Estuary Programs and other coastal watersheds identified as national priorities for protection and restoration, in the State Unified Watershed Assessment processes. We will develop our annual work plans based on consideration of the needs identified in the Watershed Restoration Action Strategies developed for priority coastal watersheds. Finally, we will review EPA-State Agreements and Regional Management Agreements to evaluate progress being made towards the environmental and programmatic measures specified for CMB's programs in the EPA Strategic Plan and annual budget development process.



## Attachment B: Coastal Management Branch Personnel and Contact Information

<u>Coastal Management Branch</u>	<u>Tel. #</u> (AREA CODE 202)	<u>Fax #</u>
<p><i>Darrell Brown, Chief</i></p> <p>UNCED follow-up (land-based sources of marine pollution)</p> <ul style="list-style-type: none"> <li>• Convention on Biodiversity</li> <li>• Coastal Monitoring</li> <li>• Marine and Coastal Protected Areas</li> <li>• Coastal Index Monitoring Sites Representative</li> <li>• CWA Benefits Team Representative</li> </ul>	260-6502	260-9960
<p><i>Nadeen Thompson, Secretary</i></p>	260-9103	260-9960
<p><i>Ruth Chemerys (One Year Detail to Assessment &amp; Watershed Protection Division)</i></p> <ul style="list-style-type: none"> <li>• Buzzards Bay</li> <li>• Delaware Estuary</li> <li>• Casco Bay</li> </ul>	260-9038	260-7024
<p><i>Jessica Cogan</i></p> <ul style="list-style-type: none"> <li>• Coastal Management Branch Executive Officer</li> <li>• Program Management &amp; Implementation Team</li> <li>• Technical Assistance Team</li> <li>• Lower Columbia River NEP</li> <li>• Santa Monica NEP</li> <li>• Mobile Bay</li> <li>• Narragansett Bay Estuary Program</li> <li>• Morro Bay NEP</li> <li>• Coastal Zone Conference coordinator</li> <li>• Consensus Building - Dispute Resolution</li> <li>• NEP Evaluation</li> <li>• ISTE A</li> <li>• International Integrated Coastal Resource Mgmt. Training</li> <li>• Urban Team - Smart Growth</li> <li>• Sprawl Activities Conference</li> </ul>	260-7154	260-9960

*Coastal Watershed Protection Strategy:  
An Action Plan for the Coastal Management Branch*

*Coastal Management Branch - contd.*

Tel. #      Fax #  
(AREA CODE 202)

*Gregory Colianni*

260-4025      260-9960

- Technical Assistance Team Leader
- Program Management & Implementation Team
- Charlotte Harbor NEP
- Delaware Inland Bays NEP
- Puget Sound
- Gulf of Mexico
- Sarasota NEP
- Index of Watershed Indicators
- Coastal Eutrophication
- Coastal Monitoring
- Great Water Bodies liaison
- Atmospheric Deposition support
- NEP Report to Congress
- NEP data - Environmental indicators

*Joe Hall*

260-9082      260-9960

- Program Management & Implementation Team
- Technical Assistance Team
- Internet management for OCPD/CMB
- Internet support for NEPs
- Home pages
- Internet Technical Center Liaison
- National Estuary Program technical support
- 305(b) consistency
- Volunteer Estuary monitoring guidance - workshops
- Methods compendium for Marine Estuarine monitoring
- Measuring Progress of Estuary programs guidance/workshops
- CMB QA Liaison
- Technical Innovations
- NEP data - environmental indicators

*Coastal Watershed Protection Strategy:  
An Action Plan for the Coastal Management Branch*

*Coastal Management Branch - contd.*

Tel.#            Fax#  
(AREA CODE 202)

*Nancy Laurson*

260-1698            260-9960

- Program Management & Implementation Team
- Technical Assistance Team
- NEP workshops and trainings
- Endangered Species Act (NEP issues)
- Air Deposition
- Tillamook NEP
- Galveston NEP
- New Hampshire NEP
- Massachusetts Bay NEP
- Coordination w/OCRM & NERR
- ANEP Liaison
- NEMO Project
- NEP Success Stories
- Tech Transfer Conference
- 1998 Estuaries Day
- OWOW Outreach Team
- '99 Biennial Review

*Deborah Lebow*

260-6419            260-9960

- Shore Protection Act
- Air Deposition
- Great Water Program liaison
- Waquoit Bay air deposition grant
- NY/NJ Harbor NEP

*Donna Nickerson*

260-6578            260-9960

- Indian River Lagoon NEP
- Long Island Sound
- San Juan Bay NEP
- Resources Valuation Handbook

*Coastal Watershed Protection Strategy:  
An Action Plan for the Coastal Management Branch*

*Coastal Management Branch - contd.*

Tel. #            Fax  
(AREA CODE 202)

*Betsy Salter*

260-6466            260-9960

- Program Management & Implementation Team Leader
- Albemarle-Pamlico Sounds
- Peconic Bay
- Barnegat Bay
- San Francisco Estuary Project
- Corpus Christi Bay
- *Pfiesteria* and other harmful Algal Blooms
- Copper Brake Pad Workgroup
- Coastal Watershed Protection Strategy
- NEP Funding guidance
- Non-indigenous Aquatic Nuisance species
- Federal consistency guidance (NEP)
- CCMP governance/institutional arrangements
- SRF liaison - financing

*Bill Shaklee* (Environmental Careers Organization Intern)

260-0294            260-9960

- Smart Growth
- Corpus Christi NEP (back-up)
- Coastal Technology Transfer Conference

*Steven Taylor* (IPA/MD Dept. Nat. Res. thru 7/98)

410/974-3382    974-2571

- Director, Maryland Coastal Bays NEP

*Wendy Walsh*

260-6073            260-9960

- GIS mapping of marine and coastal protected area  
    (joint project w/Center for Marine Conservation)
- Maintenance of the NEP web site
- OCPD Display
- Maryland Coastal Bays
- Barataria-Terrebonne NEP

*Ruth Fitchett, Senior Environmental Employee*

260-1435            260-9960

*Delois Jones, Senior Environmental Employee*

260-6831            260-9960



*Coastal Watershed Protection Strategy:  
An Action Plan for the Coastal Management Branch*

*Coastal Management Branch - contd.*

Tel. #      Fax  
(AREA CODE 202)

*George Loeb, Chief Science Advisor, Senior  
Environmental Employee*

260-0670      260-9960

- NEP Electronic Communications
- Non-indigenous Aquatic Nuisance Species

*Macara Lousberg*

260-9109      260-9960

- Oceans and Coastal Protection Division Program Analyst
- National Association of Counties Liaison
- Tampa Bay
- Coastal America Education/Outreach Liaison
- Coastlines Newsletter