



# Environmental Education Funding Sources for the Pacific Northwest

**Note:** This publication is provided by the EPA as a service to the education community. The information is provided as a convenience of the user. The Standards of Ethical Conduct do not permit the U.S. EPA to endorse any private sector organization, product, or service. The U.S. EPA does not exercise any control over the information you may find through these organizations



# **Environmental Education Funding Sources for the Pacific Northwest**

## **Table of Contents**

- Alaska Conservation Foundation
  - Funds Only for Conservation Projects in Alaska
- Melinda Gray Ardia Environmental Foundation, Ltd.
  - Environmental Curriculum Development Grants
- Boise State University
  - Directory of Watershed Funding Resources
- Bonneville Environmental Foundation
  - Renewable Energy Program Grants
  - Watershed Program Grants
- The Brainerd Foundation
  - Endangered Ecosystems Grants
- The Bullitt Foundation
  - Environmental Grants Non-Profit Organizations in the Pacific Northwest
- The Burning Foundation
  - Environmental Program Grants
- Captain Planet Foundation
  - Funds for Environmental Projects for Children and Youths
- City of Portland - Environmental Services
  - Community Watershed Stewardship Grants Program
- City of Seattle - Dept. of Neighborhoods
  - Neighborhood Matching Funds
- City of Tacoma Environmental Services
  - Make a Splash Environmental Grant Program
- Consumer Aerosol Products Council
  - CAPCO Science Class Challenge
- Diack Ecology Education Program
  - Ecological Studies Grants
- The Educational Foundation of America
  - Environment Grants

Environmental Concern Inc.

Wetland-Related Scholarships - Students, Government Regulatory  
Personnel, Educators

EPA Headquarters

Environmental Justice Grants

EPA Office of Water

Catalog of Federal Funding Source for Watershed Protection

EPA Region 10

Environmental Education Funding Sources for the Pacific Northwest

EPA Environmental Education Grant Program

EPA Regional Geographic Initiative (RGI) Grants

Pesticide Environmental Stewardship Program Regional Initiative Grants

Wetlands Program Development Grants

Environmental Research & Science Foundation

Solid Waste Management Grant Policies and Guidelines

FishAmerica Foundation

FishAmerica Foundation Fund

Grants Alert.com

Funding Opportunities

Grants.gov

Search for federal grant programs

Idaho Forest Products Commission

The Idaho Forest: Grants for Teachers

William C. Kenney Foundation

Fundings to Protect, Preserve and Restore Watersheds in the West

King County Solid Waste Division

Elementary School Green Team Mini-Grants

Hazards on the Homefront Mini-Grants

King County Water & Land Division

Natural Resource Stewardship Network

The Rural Community Partnership Grants

WaterWorks The King County Water Quality Block Grant Fund

Wild Places for City Spaces: the Urban Reforestation and Habitat Restoration Grant Fund

Kitsap County Public Works  
Kitsap County Watershed Mini-Grants for Education/Enhancement Projects

Kongsgaard-Goldman Foundation  
Environmental Protection / Conservation Grants

Laird Norton Endowment Foundation  
Sustainable Watershed Management Funding

Charlotte Martin Foundation  
Wildlife and Habitat Preservation Grants

Metro Parks & Greenspaces  
Nature in Neighborhoods – 2006-07 Grants  
Waste Reduction Grants for Schools - Portland Area

Mid-Sound Fisheries Enhancement Group  
Partnerships and Matching Funds for Salmon Enhancement and Preservation

Leo Model Foundation  
Environmental Grants Available

The Mountaineers Foundation  
Environmental Grants

National Association for Humane and Environmental Education NAHEE  
National KIND Teacher Award

National Fish & Wildlife Foundation  
Five-Star Restoration Matching Grants Program  
Pulling Together Initiative  
The Nature of Learning Grants Program

National Fish & Wildlife Foundation - Pacific Northwest Region  
King County Community Salmon Fund  
Pierce County Community Salmon Fund

National Forest Foundation  
Matching Awards Program (MAP)

National Gardening Association  
2007 Mantis Award Program  
2007 Youth Garden Grants Program  
Healthy Sprouts Award  
Hooked on Hydroponics Awards  
Kids Growing With Dutch Bulbs



NOAA Restoration Center  
NOAA Community-based Restoration Program

Northwest Fund for the Environment  
Washington Natural Resources Funding

NSTA/Toyota TAPESTRY Grants  
Toyota TAPESTRY Grants for Teachers

The Oregon Community Foundation  
Oregon Historic Trails Fund

Oregon Sea Grant  
Oregon Sea Grant Funding Opportunities

Oregon Watershed Enhancement Board  
OWEB Education and Outreach Grants  
OWEB Small Grant Program

Plant Conservation Alliance, Bureau of Land Management  
Native Plant Conservation Initiative

Project Learning Tree  
GreenWorks! Grants

Puget Sound Action Team  
Public Involvement & Education (PIE) Funding

Resources for Global Sustainability, Inc.  
Environmental Grantmaking Foundations Directory

River Network  
Watershed Assistance Grants (WAG)

The Russell Family Foundation  
Environmental Sustainability Grants

Seattle Public Utilities and Department of Neighborhoods  
Grant Central Station

SeaWorld / Busch Gardens / Fuji Film  
Environmental Excellence Awards

L.J. and Mary C. Skaggs Foundation  
Environment and Ecology Grants

Snohomish County PUD  
Energy and Water Mini-Grants to Teachers in Snohomish County

Social Justice Fund Northwest  
Environmental Grants

SOLV  
Grants through Make It Right Program

Sustainable Seattle  
Mini-grants Available Upon Completion of Choose to Change Workshop

U.S. Fish & Wildlife Service  
Grants-at-a Glance

U.S. Fish & Wildlife Service - Coastal Program  
Alaska Coastal Conservation Grants Program

Washington Department of Ecology  
Terry Husseman Sustainable Schools Awards

Washington Foundation for the Environment  
Student Environmental Stewardship Award Program  
Washington Foundation for the Environmental Education Grants

Washington Native Plant Society  
Education Grants

Wilberforce Foundation  
Funding for Natural Habitat Protection

Wild Ones Natural Landscapers, Ltd.  
Seeds for Education Fund

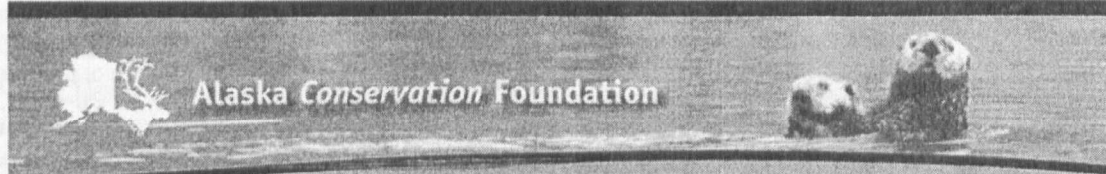
## Environmental Education Funding Sources for the Pacific Northwest

### Alaska Conservation Foundation

Title:

Description:

#### Funds Only for Conservation Projects in Alaska



#### Grants and Awards

ACF's core function is to raise and distribute funds to the most effective conservation organizations addressing the most critical conservation efforts in the state. Through strategic grantmaking, ACF strengthens those organizations, protects Alaska's magnificent wild places, and supports healthy communities.

ACF's Awards Program honors individuals and organizations that have made outstanding contributions to Alaska conservation through leadership, the arts, education, and community involvement. Paying tribute to such dedication and hard work is crucial—it allows their accomplishments to be celebrated within and beyond the conservation community, and it serves to remind tomorrow's conservation leaders that such efforts can bring about powerful and positive change.

See website: [http://www.akcf.org/\\_pages/grants\\_amp\\_awards.php](http://www.akcf.org/_pages/grants_amp_awards.php)

Contact:

Address:

Phone:

Fax:

E-Mail

URL:

Description:

#### Alaska Conservation Foundation

Laurie Adams

441 West 5th Avenue, Suite 402

Anchorage, AK, 99501-2340

907-276-1917

907-274-4145

[acfinfo@akcf.org](mailto:acfinfo@akcf.org)

<http://www.akcf.org/>

Alaska Conservation Foundation is a community foundation for the environment that receives and awards grants throughout the state to:

- Protect the integrity of Alaska's ecosystems,
- Promote sustainable livelihoods for Alaska's communities and people.

## Environmental Education Funding Sources for the Pacific Northwest

### Melinda Gray Ardia Environmental Foundation, Ltd.

**Title:**

**Environmental Curriculum Development Grants**

**Description:**



MELINDA GRAY ARDIA  
ENVIRONMENTAL FOUNDATION

A Non Profit Private Foundation Dedicated to the Development of Holistic Environmental Curricula

Currently, we have three main environmental education programs:

1. Environmental Curriculum Development Grants
2. Field Experiences for School Students
3. SUNY-ESF Environmental Interpretation Scholarship

**Completed Application Must Be Postmarked by April 6th, 2006**

Go to website for descriptions: <http://www.mgaef.org/Programs.htm>

**Contact:**

**Melinda Gray Ardia Environmental Foundation, Ltd.**

**Address:**

P.O. Box 621  
Skaneateles, NY, 13152

**Phone:**

**Fax:**

**E-Mail**

**URL:**

**Description:**

[info@mgaef.org](mailto:info@mgaef.org)

<http://www.mgaef.org/>

Our mission is to support educators in developing environmental curricula that integrate field activities and classroom teaching and that incorporate basic ecological principles and problem solving.

## Environmental Education Funding Sources for the Pacific Northwest

---

### Boise State University

**Title:** **Directory of Watershed Funding Resources**

**Description:** **About the Directory**

Communities across the country face a range of complex funding challenges as they attempt to meet the demands of environmental protection. The Environmental Finance Center (EFC) at Boise State University assists local communities in finding creative funding solutions to support their own plans for environmental protection. As part of this effort, the EFC provides watershed stakeholders with the funding information they need to make decisions and protect their resource.

There is a tremendous volume of information available for funding watershed restoration. However, finding and sorting through this information can be a daunting task. In an effort to address this need, the EFC has created an on-line, searchable database for watershed restoration funding. The database includes information on funding programs available for federal, state (Oregon, Washington, Idaho, and Alaska), private, and other funding sources. Users can query the information in a variety of ways including agency sponsor, keyword, or by a detailed search. At the end of a query, a brief description of each matching program will be displayed. When a specific program is selected, a detailed page of that program will be displayed and can be printed.

See website: <http://efc.boisestate.edu/>

**Contact:** **Boise State University**

**Amy Williams**

**Address:** 1910 University Drive  
Boise, ID, 83725-1936

**Phone:** 208-426-1567

**Fax:**

**E-Mail**

**URL:**

<http://www.boisestate.edu/>

**Description:** The mission of the Environmental Finance Center (EFC) at Boise State University is to provide help to those facing the "how to pay" challenges of environmental protection.



## Environmental Education Funding Sources for the Pacific Northwest

### Bonneville Environmental Foundation

**Title:**

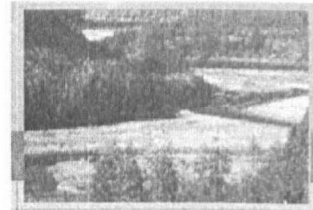
**Renewable Energy Program Grants**

**Description:**

**Renewable Projects - Introduction**

The nature of the project determines the specific application and funding process that you will need to go through. Projects fall into one of three categories:

- For home solar projects we have developed the Solar Starters Coop.
- For school solar projects we have developed the Solar 4R Schools program.
- For projects located in areas served by Puget Sound Energy, please consult the PSE Guide to the Application Process.
- For all other projects, please consult the Guide to the Application Process.



See website for details: [http://www.b-e-f.org/grants/renew\\_intro.shtm](http://www.b-e-f.org/grants/renew_intro.shtm)

**Contact:**

**Bonneville Environmental Foundation**

**Foundation Office**

**Address:**

133 SW 2nd Avenue, Suite 410  
Portland, OR, 97204

**Phone:**

503-248-1905

**Fax:**

503-248-1908

**E-Mail**

[Information@B-E-F.org](mailto:Information@B-E-F.org)

**URL:**

<http://www.bonenvfdn.org/>

**Description:**

The Bonneville Environmental Foundation is a charitable and nonprofit public benefit corporation dedicated to encouraging and funding projects that develop and/or apply clean, environmentally preferred renewable power and acquire, maintain, preserve, restore and/or sustain fish and wildlife habitat within the Pacific Northwest.

## Environmental Education Funding Sources for the Pacific Northwest

### Bonneville Environmental Foundation

**Title:**

**Watershed Program Grants**

**Description:**

BEF awards grants to develop and implement long-term, comprehensive, and science-based watershed restoration and monitoring programs. Where a comprehensive Model Watershed approach is clearly demonstrated, the Foundation may elect to provide long-term funding and/or technical assistance to:

- A) Complete scientific watershed-biological assessments and fill critical data gaps;
- B) Identify and prioritize critical restoration needs and develop and institute a comprehensive restoration strategy;
- C) Develop, support, and implement a 10-year watershed monitoring and evaluation program



The following types of organizations are eligible for BEF's long-term Model Watershed support:

- Newly created watershed groups that demonstrate strong community engagement and a clear desire to develop and implement a long-term and science-based restoration and monitoring approach; and
- Well-established watershed restoration programs that demonstrate strong community engagement and commit to maintain or initiate a long-term and science-based restoration and monitoring approach.

**Eligibility**

Any private person, organization, tribe, or local government, within the Pacific Northwest (OR, ID, WA, MT), may submit a Letter of Enquiry. Funding, however, will only be considered where applicants 1) base proposed or existing actions on sound science; 2) exhibit strong community engagement; and 3) demonstrate a comprehensive, watershed-scale approach.

**Watershed Programs**

Letters of Enquiry

Accepted Anytime

Notification of Grant Awards

Ongoing Upon Board Approval

See website for all details: <http://www.b-e-f.org/watersheds/index.shtml>

**Contact:**

**Bonneville Environmental Foundation  
Foundation Office**

**Address:**

133 SW 2nd Avenue, Suite 410  
Portland, OR, 97204

**Phone:**

503-248-1905

**Fax:**

503-248-1908

**E-Mail:**

[Information@B-E-F.org](mailto:Information@B-E-F.org)

**URL:**

<http://www.bonenvfdn.org/>

**Description:**

The Bonneville Environmental Foundation is a charitable and nonprofit public benefit corporation dedicated to encouraging and funding projects that develop and/or apply clean, environmentally preferred renewable power and acquire, maintain, preserve, restore and/or sustain fish and wildlife habitat within the Pacific Northwest.

## Environmental Education Funding Sources for the Pacific Northwest

### The Brainerd Foundation

Title:

#### Endangered Ecosystems Grants

Description:



The Brainerd Foundation provides two types of grants, Program Grants and Opportunity Fund Grants within our designated program areas: **Endangered Ecosystems and Communications and Capacity Building.**

#### Endangered Ecosystems Program

The Endangered Ecosystems (EE) program focuses on protecting high priority intact ecosystems within the Pacific Northwest, as well as maintaining or restoring biodiversity in key resilient, partially fragmented landscapes in the region. Our foundation's first priority is the protection of landscape level core habitat areas, as well as the protection or restoration of buffer areas and terrestrial and aquatic linkages between core reserves.

[http://www.brainerd.org/funding/endangered\\_ecosystems.php](http://www.brainerd.org/funding/endangered_ecosystems.php)

See website for more information:

[http://www.brainerd.org/funding/endangered\\_ecosystems.php](http://www.brainerd.org/funding/endangered_ecosystems.php)

Contact:

#### The Brainerd Foundation

**Jim Owens**

Address:

1601 Second Avenue, Suite 610  
Seattle, WA, 98101

Phone:

206-448-0676

Fax:

206-448-7222

E-Mail

[info@brainerd.org](mailto:info@brainerd.org)

URL:

<http://www.brainerd.org/index.htm>

Description:

The Brainerd Foundation is dedicated to protecting the environment of the Pacific Northwest. Our web site will tell you more about how we support grassroots-oriented projects in Washington, Oregon, Idaho, Montana, Alaska, British Columbia, and the Yukon Territory.

## Environmental Education Funding Sources for the Pacific Northwest

### The Bullitt Foundation

**Title:**

**Environmental Grants to Non-Profit Organizations in the Pacific Northwest**

**Description:**

The logo for the Bullitt Foundation, featuring the word "Bullitt" in a large, bold, serif font, with the word "FOUNDATION" in a smaller, all-caps, sans-serif font directly beneath it. The text is white and set against a dark, rectangular background.

The mission of The Bullitt Foundation is to protect, restore, and maintain the natural physical environment of the Pacific Northwest for present and future generations. The Foundation invites proposals from nonprofit organizations that serve Washington, Oregon, Idaho, western Montana (including the Rocky Mountain range), coastal Alaska from Cook Inlet to the Canadian border, and British Columbia.

The Foundation has the following program areas:

- Aquatic Ecosystems
- Terrestrial Ecosystems
- Conservation and Stewardship in Agriculture
- Energy and Climate Change
- Growth Management and Transportation
- Toxic and Radioactive Substances
- Training, Communications, and Unique Opportunities

Grant application deadlines are May 1 and November 1. Applications must be postmarked, or hand delivered to the Foundation office no later than 5:00 PM Pacific Time, on the deadline date. If the deadline falls on a weekend the deadline is the next business day.

The Foundation does not use a letter of inquiry pre-screening process. However, prospective applicants are urged to contact the appropriate program officer to discuss their request prior to submittal.

The Foundation requires current grantees to complete an entire grant year - and file a final report - prior to reapplication.

See website for further details: <http://www.bullitt.org/grants/grantseeking>

**Contact:**

**The Bullitt Foundation**

**Address:**

**Amy Solomon**  
1212 Minor Avenue  
Seattle, WA, 98101-2825

**Phone:**

206-343-0807

**Fax:**

206-343-0822

**E-Mail**

<mailto:info@bullitt.org>

**URL:**

<http://www.bullitt.org/>

**Description:**

To protect and restore the natural physical environment of the Pacific Northwest

## Environmental Education Funding Sources for the Pacific Northwest

### The Burning Foundation

<b>Title:</b>	<b>Environmental Program Grants</b>
<b>Description:</b>	<b>Environmental Programs:</b> Organizations addressing issues in Washington and Oregon. Priority issue areas include protecting threatened rivers and forests, nurturing native fish populations, and conserving land and open space for ecological and recreational purposes. Preference will be given to requests from local groups working to improve their immediate environment and from statewide groups addressing general conservation and protection issues, rather than national organizations with projects in the Pacific Northwest.  See website: <a href="http://fdncenter.org/grantmaker/burning/index.html">http://fdncenter.org/grantmaker/burning/index.html</a>
<b>Contact:</b>	<b>The Burning Foundation</b>
	<b>Therese Olge</b>
<b>Address:</b>	6723 Sycamore Ave NW Seattle, WA, 98117
<b>Phone:</b>	206-781-3472
<b>Fax:</b>	
<b>E-Mail</b>	<a href="mailto:OgleFounds@aol.com">OgleFounds@aol.com</a>
<b>URL:</b>	<a href="http://fdncenter.org/grantmaker/burning/index.html">http://fdncenter.org/grantmaker/burning/index.html</a>
<b>Description:</b>	To protect our region's rivers, forests, native fish and land...



## Environmental Education Funding Sources for the Pacific Northwest

---

### Captain Planet Foundation

**Title:**

**Funds for Environmental Projects for Children and Youths**

**Description:**

**Policies and Grant Guidelines:**

The Captain Planet Foundation will fund as many projects as its annual resources allow. Please read the following guidelines thoroughly if you would like to seek funding from us.



In order to maximize the impact of Foundation funds, the Board of Trustees limit their grant awards to those applications which comply with the following guidelines. All applicant organizations or sponsoring agencies must be exempt from federal taxation under the Internal Revenue Code Section 501, in order to be eligible for funding (this includes most schools and non-profit organizations).

**All Projects Must:**

- Promote understanding of environmental issues

- Focus on hands-on involvement

- Involve children and young adults 6-18 (elementary through high school)

- Promote interaction and cooperation within the group

- Help young people develop planning and problem solving skills Include adult supervision

- Commit to follow-up communication with the Foundation (specific requirements are explained once the grant has been awarded)

See website for details: <http://www.captainplanetfdn.org/aboutUs.html>

**Contact:**

**Captain Planet Foundation**

**Address:**

133 Luckie Street, 2nd Floor

Atlanta, GA, 30303

**Phone:**

404-827-4130

**Fax:**

404-588-6279

**E-Mail**

[Captain.Planet.Foundation@turner.com](mailto:Captain.Planet.Foundation@turner.com)

**URL:**

**Description:**

The mission of the Captain Planet Foundation is to fund and support hands-on environmental projects for children and youths. Through environmental education, we believe that children can achieve a better understanding and appreciation for the world in which they live.

## Environmental Education Funding Sources for the Pacific Northwest

### City of Portland - Environmental Services

**Title:**

**Community Watershed Stewardship Grants Program**

**Description:**

Stewardship is people working together to improve the health of streams, neighborhoods and natural areas. The quality of water in our rivers and streams can be greatly improved when thousands of individuals take simple steps to reduce water pollution. This is the basis of the principle of stewardship. We are all responsible for doing our part to take care of the watershed, and the world, that we share.



**Watershed Stewardship Grants**

Maintaining a healthy watershed takes the efforts of everyone who lives, works and plays in that watershed. Environmental Services helps people help our streams. Our watershed stewardship grants provide up to \$5,000 to citizens and organizations to encourage watershed protection and enhancement at the local level. Grant money can be used for supplies, materials, equipment, room rentals, feasibility studies or technical assistance.

**The deadline to apply for 2006-2007 grants has passed. Environmental Services will begin accepting 2007-2008 grant applications in spring 2007.**

See: <http://www.portlandonline.com/bes/index.cfm?c=36036>

For more information or to receive an application in the mail, call Lisa Libby at 503-823-7917 or email [lisal@bes.ci.portland.or.us](mailto:lisal@bes.ci.portland.or.us)

Environmental Services  
Community Stewardship Grant Program  
1120 SW Fifth Avenue, Room 1000  
Portland, Oregon 97204

See website: <http://www.portlandonline.com/bes/index.cfm?c=dgadg>

**Contact:**

**City of Portland - Environmental Services**

**Lisa Libby**

**Address:**

1120 SW 5th Avenue, Room 1000  
Portland, OR, 97204-1912

**Phone:**

503-823-7740

**Fax:**

503-823-6995

**E-Mail**

**URL:**

<http://www.enviro.ci.portland.or.us/>

**Description:**

Clean Rivers Education

## Environmental Education Funding Sources for the Pacific Northwest

---

### City of Seattle, Dept. of Neighborhoods

**Title:** **City of Seattle Neighborhood Matching Funds**

**Description:** The Neighborhood Matching Fund is a City grant program that provides cash grants to neighborhood and community organizations for a wide variety of neighborhood-based projects. The program was started in response to calls from neighborhood leaders to assist them with neighborhood self-help projects.

A required component of the program is its match provision. For most projects, the community is required to donate cash, volunteer labor or donated services or materials at least equal in value to the cash provided by the City. The program has been used to build new playgrounds and parks, plant street trees, restore open space and wetlands, create public art, build traffic circles, develop plans for business districts, and much more.

The fund currently provides \$3.2 million dollars in the following categories:  
Large Projects Fund  
Small and Simple Projects Fund  
Tree Fund  
Neighborhood Outreach and Development Fund (including Small Sparks)

See website for details: <http://www.cityofseattle.net/neighborhoods/nmf/about.htm>

**Contact:** **City of Seattle, Dept. of Neighborhoods**  
**Scott Minnix**

**Address:** 700 3rd Avenue, Suite 400  
Seattle, WA, 98104

**Phone:** 206-684-0464

**Fax:**

**E-Mail:**

**URL:** <http://www.cityofseattle.net/neighborhoods/nmf/database/default.htm>

**Description:** The Neighborhood Matching Fund started as an outgrowth of a strong and organized call from neighborhood leaders for more responsive programs

## **Environmental Education Funding Sources for the Pacific Northwest City of Tacoma Environmental Services**

**Title:** **Make a Splash Environmental Grant Program**

**Description:** **Make a splash in Tacoma with the City's environmental grant program!**

**The next round of Make A Splash grants are due June 20**  
City of Tacoma Environmental Services awards up to \$50,000 a year in environmental grants to help educate residents and protect and restore our surface water resources. Grants may be up to \$2,500 and are open to anyone considering a project within Tacoma city limits. Projects may be educational and should focus on preventing pollution and protecting or restoring clean water. Check out the projects supported by 2005 and 2004 Make a Splash grants.

The Make a Splash program is supported by user fees from the City's surface water utility.

Website: <http://www.cityoftacoma.org/Page.aspx?hid=1889>

**Contact:** **City of Tacoma Environmental Services**

**Address:** **Christy Strand**  
2201 Portland Avenue  
Tacoma, WA, 98421

**Phone:** 253-502-2105

**Fax:**

**E-Mail**

**URL:** <http://www.ci.tacoma.wa.us/waterservices/Default.htm>

**Description:** Wastewater Management and Surface Water Management Programs work hard - with your help - to make sure every drop leaving our homes, businesses, and streets is safe before it reaches Puget Sound... and beyond.

## Environmental Education Funding Sources for the Pacific Northwest

# Consumer Aerosol Products Council

**Title:** CAPCO Science Class Challenge - Grades 4-9

**Description:** **About the Contest**

This is an invitation to participate in the CAPCO Science Class Challenge and win up to \$5,000 for your school and a pizza party for your class! (Last year, CAPCO awarded \$30,000 to schools across the country.) The CAPCO Science Class Challenge is a classroom contest for grades 4-9. The purpose of the competition is to encourage students and teachers to learn about the Earth's protective upper ozone layer, CFCs, and the environment by using provided activities or your own creative methods. These activities are perfect for your fall semester earth science units.

CAPCO has added some exciting new changes to the contest this year. There are now more opportunities to win and home educators are now eligible to participate in the Challenge. If you are an educator teaching within grades 4-9 and can spend 20 minutes of class time teaching students about the Earth's ozone layer, visit the web site below to learn more!

**Deadline for entry is May 8, 2006 is over - Please be sure to participate in the next school year's (2006-2007) Science Class Challenge!**

Website: <http://www.nocfcs.org/scc/home.htm>

**Contact:** Consumer Aerosol Products Council

**Pheniece Jones**

**Address:** 99 Canal Center Plaza • Suite 310

Alexandria, VA, 22314

**Phone:** 703-683-1044

**Fax:**

**E-Mail**

**URL:**

<http://www.nocfcs.org/>

**Description:** The Consumer Aerosol Products Council (CAPCO) is a non-profit organization that provides information on aerosols and environmental issues for consumers, media and educators.



## **Environmental Education Funding Sources for the Pacific Northwest**

### **Diack Ecology Education Program**

**Title:**

**Ecological Studies Grants**

**Description:**

The Diack Ecology Education Program was established in 1993 by the late Dr. Arch Diack and his family. Funds are awarded to assist "hands-on" programs which involve Oregon children, K-12 in regularly scheduled field based study which emphasizes analytical thought, especially programs in which the students' work has community visibility and is connected to community interest or goals.

Grants usually do not exceed \$1,500 and are awarded for projects which study any aspect of the local environment by taking advantage of close study opportunities. Funds have been used for a variety of items such as microscopes, safety glasses, soil test kits, rock hammers, boots, field study books, cameras, back packs, compasses, binoculars, water test kits, specimen collection supplies, etc.



The Diack Program especially supports projects which will become part of the weekly school program. An example would be a proposal to study a site close to the school or to "adopt" or develop such a site. Funds ordinarily are not approved for substitute teachers or transportation. There are no funding deadlines.

See website for more details: <http://diack-ecology.org/grantprocedures.htm>

**Contact:**

**Diack Ecology Education Program**

**Don Jeffries**

**Address:**

3715 NE Wistaria Drive  
Portland, OR, 97212  
503-287-7974

**Phone:**

**Fax:**

**E-Mail**

**URL:**

<http://diack-ecology.org>

**Description:**

Grants to teachers in Oregon for Field Based Ecology

## **Environmental Education Funding Sources for the Pacific Northwest**

---

### **The Educational Foundation of America**

**Title:** **Environment Grants**

**Description:** The Educational Foundation of America (EFA) makes grants to qualifying non-profit organizations that have tax-exempt status and those that are not private foundations as defined in the Internal Revenue Code. EFA provides grants for specific projects. It does not provide funds for endowment or endowed faculty chairs, building/capital programs, religious purposes, grants to individuals, annual fund-raising campaigns, indirect costs, overhead or general support. The Foundation prefers not to fund projects located outside the United States.

Areas of interest include, but are not limited to, the environment, the crisis of human overpopulation and reproductive freedom, Native Americans, arts, education, medicine, and human services.

See website: <http://www.efaw.org/Inquiry%20Guidelines.htm>

**Contact:** **The Educational Foundation of America**

**Address:** **Diane M. Allison**  
35 Church Lane  
Westport, CT, 06880-0424

**Phone:** 203-226-6498

**Fax:** 203-227-0424

**E-Mail:** <mailto:efa@efaw.org>

**URL:** <http://www.efaw.org>

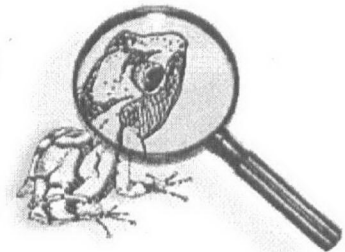
**Description:** The foundation's areas of interest include, but are not limited to: the arts, education, energy, the environment, human overpopulation and reproductive freedom, medicine, Native Americans, and peace.

## Environmental Education Funding Sources for the Pacific Northwest

### Environmental Concern Inc.

**Title:** Wetland-Related Scholarships - Students, Government Regulatory Personnel, Educators

**Description:** Through generous grants from organizations such as The Starr Foundation and the Constellation Energy Group, EC is able to offer three types of scholarships, Student Scholarships, Governmental Scholarships, and Educator Scholarships. These scholarships provide vital skills to many people who would otherwise be unable to obtain professional training in technical wetland, resource management and educational issues.



**Student Scholarships:** Are available to qualified college juniors and seniors, graduate students and recent graduates who are not currently employed in the wetland field.  
**NOTE:** Students are encouraged to apply through their schools for independent study credits.

**Governmental Scholarships:** Are available for government regulatory personnel at the local, state and federal level.

**Educator Scholarships:** Are available for formal and non-formal educators.

Scholarships are competitive and are awarded based on qualifications and references. For more information and application material, please contact the Education Department at [dir.educate@wetland.org](mailto:dir.educate@wetland.org) or call 410-745-9620

See website for details: [http://www.wetland.org/educ\\_scholar.htm](http://www.wetland.org/educ_scholar.htm)

**Contact:** Environmental Concern Inc.

**Education Director**

**Address:** P.O. Box P

St. Michaels, MD, 21663

**Phone:** 410-745-9620

**Fax:** 410-745-4066

**E-Mail:** [educate@wetland.org](mailto:educate@wetland.org)

**URL:** <http://www.wetland.org/>

**Description:** A non-profit organization dedicated to wetland restoration, research, and education since 1972.

## **Environmental Education Funding Sources for the Pacific Northwest**

---

### **EPA Headquarters**

**Title:** **Environmental Justice Grants**

**Description:** This web site contains information on various EPA environmental justice (EJ) grant programs. The grant programs discussed in this document are those which are specifically designed to address EJ concerns and issues. Other EPA grant programs may fund EJ projects and activities as well.

#### **EPA Environmental Justice Grants Programs**

##### **Program Overview:**

The Office of Environmental Justice's Small Grants Program was established in 1994 to provide financial assistance to eligible community groups (i.e., community-based/ grassroots organizations, churches, schools, other non-profit organizations, local governments, tribal governments that are working on or plan to carry out projects to address environmental justice issues. The guidance provided below outlines the goals and general procedures for applicants and awards.

#### **Community/University Partnership (CUP) Grants Program**

##### **Program Overview:**

The emphasis of this grants program is on meaningful, two-way cooperation between communities or tribes and institutions of higher education serving minority and low-income communities or tribes in order to address environmental justice issues. Partnerships must be established with formal agreements (i.e. Memorandum of Agreements) between at least one College/University and at least one socio-economically disadvantaged community or tribes which is adversely impacted by an environmental hazard and public health concerns. These partnerships become the catalyst for increasing environmental awareness and involvement in resolving environmental problems, such as exposure to environmental pollutants in minority and low-income communities and on Tribal lands.

See website: <http://www.epa.gov/compliance/environmentaljustice/grants/index.html>

**Contact:** **EPA Headquarters**

**Victoria Plata**

**Address:** 1200 Pennsylvania Avenue NW  
Washington, DC, 20460

**Phone:**

**Fax:**

**E-Mail**

**URL:**

**Description:** To protect human health and the environment

## Environmental Education Funding Sources for the Pacific Northwest

### EPA Office of Water

**Title:**

**Catalog of Federal Funding Sources for Watershed Protection**

**Description:**

The Catalog of Federal Funding Sources for Watershed Protection Web site is a searchable database of financial assistance sources (grants, loans, cost-sharing) available to fund a variety of watershed protection projects. To select funding programs for particular requirements, use either of two searches below. One is based on subject matter criteria, and the other is based on words in the title of the funding program.

Criteria searches include the type of organization (e.g., non-profit groups, private landowner, state, business), type of assistance sought (grants or loans), and keywords (e.g., agriculture, wildlife habitat).

Searches result in a listing of programs by name. Click on each program name to review detailed information on the funding source.

See website: <http://cfpub.epa.gov/fedfund/>

**Contact:**

**EPA Office of Water**

**Watershed Academy**

**Address:**

1200 Pennsylvania Avenue, N.W.  
Washington, DC, 20460

**Phone:**

**Fax:**

**E-Mail**

mailto:

**URL:**

<http://>

**Description:**

To protect human health and the environment



## **Environmental Education Funding Sources for the Pacific Northwest EPA Region 10**

**Title:** **Environmental Education Funding Sources for the Pacific Northwest**  
**Description:** **NEW** updated booklet January 2006, listing the environmental education grants, fundings, and loans available. Describes the grant guidelines, contacts, websites, and a brief description of the funding sources. Grant/loans/funds also available online through EPA's Environmental Education Clearinghouse.

Available from EPA Region 10 Publication Office

**Contact:** **EPA Region 10**  
**Public Environmental Resource Center**  
**Address:** 1200 Sixth Avenue  
Seattle, WA, 98101  
**Phone:** 206-553-1200  
**Fax:** 206-553-0059  
**E-Mail:** [epa-seattle@epa.gov](mailto:epa-seattle@epa.gov)  
**URL:** <http://www.epa.gov/r10earth>  
**Description:** To protect human health and the environment

## **Environmental Education Funding Sources for the Pacific Northwest**

---

### **EPA Region 10**

**Title:**

**EPA Environmental Education Grant Program**

**Description:**

**EPA Grant Description**

The Grants Program sponsored by EPA's Office of Environmental Education supports environmental education projects that enhance the public's awareness, knowledge, and skills to help people make informed decisions that affect environmental quality. EPA awards grants each year based on funding appropriated by Congress. Annual funding for the program ranges between \$2 and \$3 million.

**New for FY 2006 Grant Applications:**

1. Applications must be received by EPA by 5:00 PM on November 23, 2005 the deadline.

2. Applicants must demonstrate linkage to EPA's Strategic Plan for increasing environmental stewardship. See Sections I(B), IV(A)(2), and V(B)(2) of the solicitation notice for more information.

3. Applicants are required to explain plans for tracking and measuring progress. See Sections IV(A)(3) and V(B)(3).

3. Applicants are requested to describe past performance, if applicable. See Sections IV(A)(5) and V(B)(5).

**Will Not Fund:** Construction projects; technical training of environmental management professionals; noneducational research and development; lobbying or political activities, and/or projects that are solely designed to develop or disseminate environmental information.

Website: <http://www.epa.gov/enviroed/grants.html>

**Contact:**

**EPA Region 10**

**Sally Hanft**

**Address:**

1200 Sixth Avenue  
Seattle, WA, 98101

**Phone:**

206-553-1200

**Fax:**

206-553-0149

**E-Mail**

[epa-seattle@epa.gov](mailto:epa-seattle@epa.gov)

**URL:**

<http://www.epa.gov/r10earth>

**Description:**

To protect human health and the environment

## **Environmental Education Funding Sources for the Pacific Northwest**

### **EPA Region 10**

**Title:**

**EPA Regional Geographic Initiative (RGI) Grants**

**Description:**

Region 10 EPA is now accepting applications to fund projects that support community driven approaches to solving environmental problems in Region 10 (Alaska, Idaho, Oregon and Washington.) The Regional Geographic Initiative (RGI) funds projects that fill critical gaps in the Agency's ability to protect human health and the environment by fostering and supporting community-driven approaches to long-term, sustainable solutions to environmental challenges.

2006 RGI proposals must support either reducing risks for vulnerable populations or holistic environmental protection. Details of this year's criteria can be found on the web. The funds are available to a wide range of organizations including local governments, tribes, states, and nonprofit groups such as watershed councils. Proposals will be accepted for innovative projects ranging from \$5,000 to \$50,000.

RGI funds are awarded annually on a competitive basis. In 2005, Region 10 received over 100 proposals and ten were awarded.

This year's proposals must be postmarked or submitted electronically by **December 15, 2005**.

The full solicitation, including the 2006 selection criteria, threshold criteria, application template, and instructions are available online at:  
<http://yosemite.epa.gov/R10/ECOCOMM.NSF/rgi/RGI+Solicitation>

**Contact:**

**EPA Region 10**

**Dan Phalen**

**Address:**

1200 Sixth Avenue  
Seattle, WA, 98101

**Phone:**

206-553-1200

**Fax:**

206-553-0059

**E-Mail**

[epa-seattle@epa.gov](mailto:epa-seattle@epa.gov)

**URL:**

<http://www.epa.gov/r10earth>

**Description:**

To protect human health and the environment

## Environmental Education Funding Sources for the Pacific Northwest

### EPA Region 10

**Title:** **Pesticide Environmental Stewardship Program Regional Initiative Grants**  
**Description:** Regional Initiative Grants support pollution prevention projects that are important to and complement ongoing efforts in the EPA regional offices. Traditionally, each EPA regional office selects one project for funding. Then, the top unfunded projects from each regional office are pooled, further reviewed and funded until the balance of available funds are obligated. Questions regarding these grants or the call for proposals should be directed to the appropriate EPA regional office contacts.

Membership in EPA's Pesticide Environmental Stewardship Program is not an eligibility requirement for these grants.

A call for proposals is generally issued around February 1 of each year. For reference, you may follow these links to view information from last year's process (current year information will be posted when a call for proposals is issued:

**Contact:**  
Sandy Halstead  
24106 N Bunn Rd  
Prosser, WA 99350  
(509) 786-9225  
halstead.sandra@epa.gov

See website for details: [http://www.epa.gov/opppppd1/PESP/regional\\_grants.htm](http://www.epa.gov/opppppd1/PESP/regional_grants.htm)

**Contact:** **EPA Region 10**  
**Sandy Halstead**  
**Address:** 1200 Sixth Avenue  
Seattle, WA, 98101  
**Phone:** 206-553-1200  
**Fax:** 206-553-0149  
**E-Mail:** [epa-seattle@epa.gov](mailto:epa-seattle@epa.gov)  
**URL:** <http://www.epa.gov/r10earth>  
**Description:** Federal Agency, Northwest Region: Alaska, Idaho, Oregon, Washington

## Environmental Education Funding Sources for the Pacific Northwest EPA Region 10

**Title:**

**Wetlands Program Development Grants**

**Description:**

The Wetland Program Development Grants (WPDGs), initiated in FY90, provide eligible applicants an opportunity to conduct projects that promote the coordination and acceleration of research, investigations, experiments, training, demonstrations, surveys, and studies relating to the causes, effects, extent, prevention, reduction, and elimination of water pollution. While WPDGs that are competed can continue to be used by recipients to build and refine any element of a comprehensive wetland program, emphasis for the competition will be given to funding projects that address the four national priorities identified by EPA: 1) strengthening state/tribal comprehensive wetland programs; 2) developing a comprehensive monitoring and assessment program; 3) improving the effectiveness of compensatory mitigation; and 4) refining the protection of vulnerable wetlands and aquatic resources.

Region 10 will also place an emphasis on three additional areas of concern:

1. Wetland and stream restoration:
2. Watershed Planning:
3. Community Environmental Stewardship : of streams and wetlands are targeted for funding and technical assistance.

States, Tribes, local governments (S/T/LGs), interstate associations, and intertribal consortia are eligible to apply for the competition.

The Region 10 contact is: David Kulman, 205-553-6219, [kulman.david@epa.gov](mailto:kulman.david@epa.gov).

See website for details: <http://www.epa.gov/owow/wetlands/grantguidelines/>

**Contact:**

**EPA Region 10**

**David Kulman**

**Address:**

1200 Sixth Avenue  
Seattle, WA, 98101

**Phone:**

206-553-1200

**Fax:**

206-553-0059

**E-Mail**

[epa-seattle@epa.gov](mailto:epa-seattle@epa.gov)

**URL:**

<http://www.epa.gov/r10earth>

**Description:**

To protect human health and the environment

## Environmental Education Funding Sources for the Pacific Northwest

# Environmental Research & Science Foundation

**Title:**

**Solid Waste Management Grant Policies and Guidelines**

**Description:**

The Foundation awards several grants each year for research or education in topics pertaining to any aspect of solid waste management. Project topics could deal with any aspect of the following:

- Waste generation rates and composition;
- Waste minimization;
- Collection and transport;
- Sorting, recycling, and remanufacture;
- Disposal options (e.g. landfilling or incineration);
- Waste or energy recovery (e.g., composting, landfill gas to energy);
- Innovations in collection and transportation equipment development;
- Employee health and safety;
- Sustainability or resources;
- Life-cycle assessment of waste management;
- Educating corporate customers in purchasing environmentally preferable waste services; and
- Development of high school and college educational programs.

Grant Range: \$10,000 to \$500,000.

See website for further criteria/guidelines: <http://www.erefndn.org/guide.html>

**Contact:**

**Environmental Research & Science Foundation**

**Address:**

**Michael J. Cagney**  
120 S. Fayette Street  
Alexandria, VA, 22314

**Phone:**

703.299.5139

**Fax:**

703.299.5145

**E-Mail**

[mcagney@envasns.org](mailto:mcagney@envasns.org)

**URL:**

<http://www.erefndn.org/>

**Description:**

The Environmental Research and Education Foundation (EREF) is an independent public grant-making entity whose mission is to develop environmental solutions for the future.

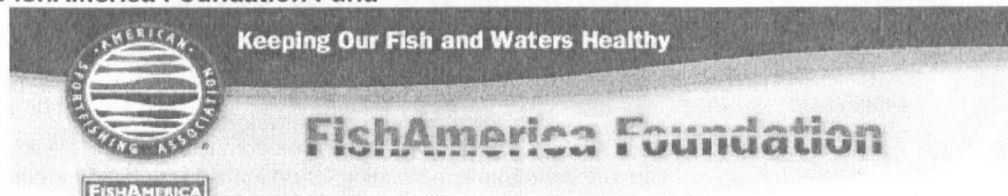
## Environmental Education Funding Sources for the Pacific Northwest

### FishAmerica Foundation

Title:

**FishAmerica Foundation Fund**

Description:



The FishAmerica Foundation unites the sportfishing industry with conservation groups, government natural resource agencies, corporations, and charitable foundations to invest in fish and habitat conservation and research across the country.

#### Funded Projects

FishAmerica and its partners in the sportfishing and boating industry, conservation community and government have invested more than \$8 million invested into 700 water quality and fish population enhancement projects across North America. More than 1 million hours of local volunteer labor has matched FishAmerica's donations.

See website: <http://www.fishamerica.org/projects/index.html>

Contact:

**FishAmerica Foundation**

Address:

225 Reinekers Lane • Suite 420  
Alexandria, VA, 22314

Phone:

703.519.9691

Fax:

703.519.1872

E-Mail

[fishamerica@asafishing.org](mailto:fishamerica@asafishing.org)

URL:

<http://www.fishamerica.org/>

Description:

A nonprofit conservation-oriented organization that focuses on both fresh and saltwater environments.



## Environmental Education Funding Sources for the Pacific Northwest

### Grants Alert.com

**Title:**

**Funding Opportunities**

**Description:**



Our number one goal at GrantsAlert.com is to make life a little easier for those who devote their time to searching for education grants and identifying new funding opportunities for their organizations, schools, districts, consortia and state education agencies.

#### **Good Stuff For Teachers**

Teachers, look here first for classroom funding opportunities.

#### **New! Worthwhile Links**

- After School Funding
- An interesting collection of links
- Center for Mathematics and Science Education
- DELL Grants Calendar
- iLoveSchools.com is a free matchmaking service - for education!
- School Grants, and more....

See website for link: <http://www.grantsalert.com/index.cfm>

**Contact:**

**Grants Alert.com**

**Joe Mizereck**

**Address:**

PO Box 38051

Tallahassee, FL, 32315-8051

**Phone:**

850-385-0488

**Fax:**

850-385-8546

**E-Mail**

[jmizereck@grantsalert.com](mailto:jmizereck@grantsalert.com)

**URL:**

<http://www.grantsalert.com/index.cfm>

**Description:**

It is my hope that this website will become an invaluable tool in helping you and others find the funds, and more importantly, the friends you need to meet those challenges.

## Environmental Education Funding Sources for the Pacific Northwest

# Grants.gov

**Title:** Grants.gov

**Description:** Grants.gov allows organizations to electronically find and apply for more than \$400 billion in Federal grants. Grants.gov is THE single access point for over 1000 grant programs offered by all Federal grant-making agencies. The US Department of Health and Human Services is proud to be the managing partner for Grants.gov, an initiative that is having an unparalleled impact on the grant community.

See website: <http://www.grants.gov/>

**Contact:** Grants.gov

**Address:** 200 Independence Avenue, SW, HHH Building, Room 739F  
Washington, , DC, 20201

**Phone:** 800-518-4726

**Fax:**

**E-Mail**

**URL:** <http://www.grants.gov/AboutUs>

**Description:** "Agencies will allow applicants for Federal Grants to apply for and ultimately manage grant funds online through a common web site, simplifying grants management and eliminating redundancies."

## Environmental Education Funding Sources for the Pacific Northwest

### Idaho Forest Products Commission

Title:

The Idaho Forest: Grants for Teachers

Description:



#### Grants Available for Forest-Minded Teachers of Idaho!!

What: The Idaho Forest Products Commission is pleased to offer grants of up to \$200 for forest-related education projects and activities.

Who: All teachers who will be teaching in Idaho during the upcoming school year are eligible to apply.

When: Application deadline is August 15. Grants will be awarded by September 15.  
**Applications are accepted year-round.**

How: It's easy! Just **CLICK HERE** to go to the on-line grant application page, or e-mail us at [plt@idahoforests.org](mailto:plt@idahoforests.org) and we'll send you an application form.

See website for details: <http://www.idahoforests.org/special1.htm>

Contact:

**Idaho Forest Products Commission**

Address:

**Michelle Youngquist**

Phone:

P.O. Box 855

Fax:

Boise, ID, 83701

E-Mail

URL:

208-334-4061 800-ID-WOODS (Idaho Only)

Description:

<http://www.idahoforests.org/>

The Idaho Forest Products Commission sees abundant forest resources maintained in Idaho forever through proper management of public and private forests and through an informed public that understands such management. The work of the Commission will help assure balanced and sustained timber, wildlife, recreation and scenic beauty for the welfare of the state's citizens.

## Environmental Education Funding Sources for the Pacific Northwest

---

### W. C. Kenney Foundation

**Title:** **Fundings to Protect, Preserve and Restore Watersheds in the West**

**Description:** After an intensive strategic planning process in 2004, the W. C. Kenney Watershed Protection Foundation is initiating a new grantmaking program this year.

The Foundation will set up an Advisory Committee in 2005 comprised of experts and activists who intimately know western grassroots river groups. The Committee will meet every three years, recommending groups for significant multi-year grants. The Foundation is giving grantmaking power to experts working in the field because we think those most closely engaged with western rivers are best suited to help distribute our charitable funds.

Because the Advisory Committee will select and recommend grantees, the Kenney Foundation will no longer accept unsolicited applications or funding inquiries for the bulk of our grantmaking. By dispensing with lengthy scoping and application processes, we can operate the Foundation without an office or staff, thereby making more funds available to grassroots groups. Grantees benefit by receiving larger, dependable three-year funding commitments.

Some small grants will also be given to projects that fit within our discretionary grant guidelines.

See website for details: <http://www.kenneyfdn.org/history.html>

**Contact:** **W. C. Kenney Foundation**  
**Kent Fairweather**

**Address:** c/o Barrett/Pontiff & Fairweather, 1600 Broadway, Suite 930  
Denver, CO, 80202

**Phone:**

**Fax:**

**E-Mail:** [grants@kenneyfdn.org](mailto:grants@kenneyfdn.org)

**URL:** <http://www.kenneyfdn.org>

**Description:** The W.C. Kenney Watershed Foundation works to protect, preserve and restore watersheds in the West.

## Environmental Education Funding Sources for the Pacific Northwest

### King County Solid Waste Division

**Title:**

**King County Elementary School Green Teams**

**Description:**

A Green Team is a group that takes on a project to prevent waste at school, at home or in the community. Funding and other assistance are available to complete these projects.

Are you willing to take on projects to help the environment become a cleaner, greener place?

If so, register to become a King County Green Team and take action to reduce waste.



Green Team students prepare bedding for a worm bin.

- Get details about forming a team in the Green Team brochure (PDF, 253 K) or contact Sara Gersten-Rothenberg at Triangle Associates at 206-583-0655 or [saragr@triangleassociates.com](mailto:saragr@triangleassociates.com) to get a Green Team welcome packet.
- Fund your project with a Green Team mini-grant (PDF, 534 K).

See website: <http://www.metrokc.gov/dnrp/swd/elementaryschool/greenteams.asp>

**Contact:**

**King County Solid Waste Division  
Triangle Associates**

**Address:**

201 South Jackson Street, Suite 701  
Seattle, WA, 98104

**Phone:**

206-296-6542

**Fax:**

206-296-0197

**E-Mail**

**URL:**

<http://dnr.metrokc.gov/swd>

**Description:**

County Agency For Solid Waste Disposal

## Environmental Education Funding Sources for the Pacific Northwest

---

### King County Solid Waste Division

**Title:**

**Hazards on the Homefront Mini-Grants**

**Description:**

Teachers in King County who have taken the Hazards on the Homefront workshop and are interested in completing a household hazardous waste project with their students can apply for a mini-grant. Grants are available in amounts up to \$500 and may be used for teacher planning time associated with the project, for the cost of materials or for an honorarium or speaker's fee associated with the project.



Mini-grants can fund the cost of field trips

To be eligible for a mini-grant, the project must:

- Focus on household hazardous products and their proper use and disposal, and/or safer substitutes
- Involve students
- Include adult supervision
- Be completed during the school year

In addition, teachers must agree to summarize the project in a brief final report upon project conclusion.

To apply for a Hazards on the Homefront mini-grant, contact Jennifer Howell at Triangle Associates at 206-583-0655 or [jhowell@triangleassociates.com](mailto:jhowell@triangleassociates.com).

See website for details: <http://www.metrokc.gov/dnr/swd/education/minigrants.asp>

**Contact:**

**King County Solid Waste Division  
Jennifer Howell**

**Address:**

201 South Jackson Street, Suite 701  
Seattle, WA, 98104

**Phone:**

206-296-6542

**Fax:**

206-296-0197

**E-Mail**

**URL:**

<http://dnr.metrokc.gov/swd>

**Description:**

County Agency For Solid Waste Disposal

## Environmental Education Funding Sources for the Pacific Northwest

### King County Water & Land Division

**Title:**

**Youth in Forestry Grants**

**Description:**

#### *Natural Resource Stewardship Network*

##### **NEW in 2006! Youth in Forestry Grants**

The Natural Resource Stewardship Network connects communities with the help they need to improve neighborhood green spaces and community forests. Help may be in the form of grants, project assistance or both. In 2006 the program will provide grants and technical assistance only to projects that provide youth with after school activities related to forests. For complete information, see our Guidelines and application.

##### **Overview**

Grants of up to \$20,000 will be awarded to reimburse up to 50% of labor and materials costs. Volunteer labor may be used to fulfill a portion of the grantee's share of project costs.

Projects must be community-based efforts to improve community trees, forests, greenbelts and wooded areas. Projects must be located in King County and accomplish all of the following objectives:

- Enhance urban forests or forested habitats by planting, managing, maintaining and/or monitoring trees and associated understory;
- Develop skills and abilities in citizens that will empower them to protect, conserve or manage trees and/or forested areas;
- Improve public understanding of the benefits and importance of trees in maintaining watershed health;
- Involve youth activities related to forests outside of school hours; and
- If the project involves habitat restoration or tree planting, the project must ensure long-term maintenance of project sites.

Examples: Projects that involve youth in reforesting stream banks or upland habitat, projects that help young people build skills in forestry, projects that establish a nursery as a sustainable source of trees, or projects that develop new approaches to incorporating forest activities into after school programs.

See website: <http://dnr.metrokc.gov/wlr/pi/grant-exchange/NRSN.htm>

**Contact:**

**King County Water & Land Division**  
**Linda Vane**

**Address:**

201 S. Jackson Street, Suite 703  
Seattle, WA, 98104

**Phone:**

206-296-6519

**Fax:**

206-296-0192

**E-Mail**

**URL:**

<http://splash.metrokc.gov/wlr/index.htm>

**Description:**

King County Department of Natural Resources



## Environmental Education Funding Sources for the Pacific Northwest

### King County Water & Land Division

Title:

**The Rural Community Partnership Grants**

Description:



The Rural Community Partnership Grants (RCPG) is a community service of the Rural Drainage Program of the King County Water and Land Resources Division. It provides small grants to work in collaboration with the county to solve drainage, water quality, or habitat problems in rural King County.

#### Examples of Fundable Projects

- Filtering storm water through vegetated swales and naturalized retention ponds.
- Reducing down-cutting of streambeds.
- Enlisting rural residents to minimize their impact on surface water through landscaping and gardening practices.

For more information, contact:

Ken Pritchard, Grant Exchange Coordinator  
(206) 296-8265  
(800)325-6165 ext. 68265  
ken.pritchard@metrokc.gov

See website for details: <http://dnr.metrokc.gov/wlr/pi/grant-exchange/RCPG.htm>

Contact:

**King County Water & Land Division**

**Ken Pritchard**

Address:

201 S. Jackson Street, Suite 703  
Seattle, WA, 98104

Phone:

206-296-6519

Fax:

206-296-0192

E-Mail

URL:

<http://splash.metrokc.gov/wlr/index.htm>

Description:

King County Department of Natural Resources

## Environmental Education Funding Sources for the Pacific Northwest

### King County Water & Land Division

Title:

**WaterWorks The King County Water Quality Block Grant Fund**

Description:

*WaterWorks*

Grants up to \$50,000 are available for community projects that protect or improve watersheds, streams, rivers, lakes, wetlands and tidewater. Projects must have a demonstrable positive impact on the waters of King County and must address one or more of the following:

- Improve or protect water quality and water dependent habitats
- Demonstrate the beneficial use of biosolids or reclaimed water

Focus Points

1. Lakes
2. Environmental Careers
3. Salmon Habitat

For further information please contact:

Ken Pritchard, Grant Exchange Coordinator  
(206) 296-8265,  
(800) 325-6165 ext. 68265  
ken.pritchard@metrokc.gov

See website for criteria: <http://dnr.metrokc.gov/wlr/pi/grant-exchange/waterworks.htm>

Contact:

**King County Water & Land Division**

**Ken Pritchard**

Address:

201 S. Jackson Street, Suite 703  
Seattle, WA, 98104

Phone:

206-296-6519

Fax:

206-296-0192

E-Mail

URL:

<http://splash.metrokc.gov/wlr/index.htm>

Description:

King County Department of Natural Resources

## Environmental Education Funding Sources for the Pacific Northwest

---

### King County Water & Land Division

**Title:** Wild Places for City Spaces: Urban Reforestation and Habitat Restoration Grant Fund

**Description:**



### *Wild Places in City Spaces*

Wild Places in City Spaces provides grants up to \$10,000 to volunteer organizations, community groups and government agencies for projects reforesting urban areas and restoring habitat within the Urban Growth Area of King County.

#### Examples of Fundable Projects

- Removing invasive species and planting native plants in wooded area near another natural area.
- Stream and upland restoration including stewardship training, placement of woody debris, invasive plant removal, and special educational activities.



#### For more information contact:

Ken Pritchard, Grant Exchange Coordinator  
(206) 296-8265  
(800)325-6165 ext. 68265  
[ken.pritchard@metrokc.gov](mailto:ken.pritchard@metrokc.gov)

See website for details: <http://dnr.metrokc.gov/wlr/pi/grant-exchange/wildplaces.htm>

**Contact:**

**King County Water & Land Division**  
**Ken Pritchard**

**Address:**

201 S. Jackson Street, Suite 703  
Seattle, WA, 98104

**Phone:**

206-296-6519

**Fax:**

206-296-0192

**E-Mail**

**URL:**

<http://splash.metrokc.gov/wlr/index.htm>

**Description:**

King County Department of Natural Resources

## Environmental Education Funding Sources for the Pacific Northwest

### Kitsap County Public Works

Title:

**Kitsap County Watershed Mini-Grants for Education/Enhancement Projects**

Description:



## KITSAP COUNTY Community Development

The Watershed Mini-Grant Program offers grants of up to \$2,500 for local education and restoration projects that address water quality, storm water management, stream habitat, wetlands, lakes, and nearshore habitats. The total grant funding available in 2006 is \$15,000. The program is funded by Kitsap County's Surface and Stormwater Management Program and administered by the Department of Community Development. These funds become available from January - December 31, with a RFP typically taking place in September.

If you have questions about applying for an individual grant, contact the Stream Team Coordinator, Val Koehler at 360-337-4601 or e-mail [vkoehler@co.kitsap.wa.us](mailto:vkoehler@co.kitsap.wa.us).

Website: [http://www.kitsapgov.com/dcd/nr/mini\\_grant/default.htm](http://www.kitsapgov.com/dcd/nr/mini_grant/default.htm)

Contact:

**Kitsap County Public Works**

**Val Koehler**

Address:

614 Division St. Ms-27  
Port Orchard, WA, 98366

Phone:

360-337-5777

Fax:

360-337-4867

E-Mail

URL:

<http://www.kitsapgov.com/pw/>

Description:

Maintain City & County Regulations Of Public Works

## Environmental Education Funding Sources for the Pacific Northwest

### Kongsgaard-Goldman Foundation

**Title:**

**Environmental Protection and Conservation Grants**

**Description:**



The Foundation is particularly interested in proposals reflecting the following general program categories listed in order of priority:

**Environmental Protection and Conservation**

Public policy, litigation, citizen involvement, public education, restoration, sustainable land use and environmental justice.

Grants are awarded for both general operating expenses and special projects.

The foundation will not consider any of the following types of projects: direct services, clinical and health services, medical research, grants to individuals, wildlife rehabilitation programs, land acquisition, funding of individual scholarships, or fellowships.

Geographic Funding Areas: Alaska, Idaho, Montana, Oregon, Washington, and B.C. Canada.

See website: <http://www.kongsgaard-goldman.org/program.html>

**Contact:**

**Kongsgaard-Goldman Foundation**

**Aana Agee**

**Address:**

1932 First Avenue, Suite 602  
Seattle, WA, 98101

**Phone:**

206-448-1874

**Fax:**

206-448-1973

**E-Mail**

<mailto:kgf@kongsgaard-goldman.org>

**URL:**

<http://www.kongsgaard-goldman.org>

**Description:**

The Kongsgaard-Goldman Foundation is a small, private foundation formed in 1988. The Foundation provides support to a wide range of nonprofit organizations in the Pacific Northwest (Washington, Oregon, Idaho, Alaska, Montana and British Columbia, Canada).



## Environmental Education Funding Sources for the Pacific Northwest

### Laird Norton Endowment Foundation

**Title:**

**Sustainable Watershed Management Funding**

**Description:**



## Laird Norton Foundation

Funding distinctive programs in support of environmental sustainability, protection, education and conservation

Laird Norton Foundation welcomes letters of inquiry for projects in the following areas:

- Protection and restoration strategies within a watershed that incorporate ecological, social and economic indicators
- Efforts to quantify and disseminate information on the value of water-based ecological assets at the community level with an emphasis on ecosystem economics and a watershed perspective (example - the value of preserving a watershed versus building a water filtration plant)
- Development and implementation of innovative community based strategies to create incentives for the practice of sustainable watershed management
- Implementation of restoration projects to improve surface water and groundwater quality, enhance flood control and provide healthy ecosystems through ecological engineering and maximizing the use of natural processes
- Create and maintain effective restoration partnerships that include diverse private and public organizations and agencies to maximize effectiveness at the federal, state, and local levels
- Study and participation in local watershed preservation and restoration projects through place-based environmental education programs (K-12) to create greater public awareness, understanding and involvement.

See website: <http://www.lairdnorton.org/Ineffundingfocus.htm>

**Contact:**

**Laird Norton Endowment Foundation**

**Address:**

801 Second Avenue, Suite 1300  
Seattle, WA, 98104-1516

**Phone:**

206-464-5224

**Fax:**

206-464-5277

**E-Mail**

[info@lairdnorton.org](mailto:info@lairdnorton.org)

**URL:**

<http://www.lairdnorton.org/>

**Description:**

The mission of the Laird Norton Endowment Foundation is to fund distinctive programs in conservation and forestry education.

## Environmental Education Funding Sources for the Pacific Northwest

### Charlotte Martin Foundation

**Title:**

**Wildlife and Habitat Preservation Grants**

**Description:**

**What We Believe**

As development pressures increase, the stewardship of vital ecosystems is critical for protecting species, populations and habitats. The need exists to preserve land, through acquisition, easements and other conservation approaches. Applied science and research are important tools for preserving, protecting, and restoring all forms of wildlife and habitat, as is understanding the complexity and interdependence of all life. The concept of sustainability recognizes that environment, economics and equity must be considered together in order to protect the quality of life at every level.



**What We Support**

- Only those organizations whose missions are dedicated to preservation, protection or perpetuation of wildlife and/or habitat.
- Protecting habitat sites and wildlife corridors whose conservation value is based on scientific assessment.

**Our Current focus**

- Projects that are part of an established strategy or design.
- Collaborative efforts that involve other organizations, funders, non-profits and agencies that are similarly dedicated to our mission.

**Applying for a Charlotte Martin Foundation Grant is easy!**

**Please Note:** The Foundation accepts online applications only.

See website for more details: <http://www.charlottemartin.org/programs.htm#wildlife>

**Contact:**

**Charlotte Martin Foundation**

**Grant Information**

**Address:**

Bank of America Private Bank, WA1-102-47-47, 701 Fifth Avenue, Suite 4700  
Seattle, WA, 98104-7001

**Phone:**

206/358-0648

**Fax:**

**E-Mail**

[info@charlottemartin.org](mailto:info@charlottemartin.org)

**URL:**

<http://www.charlottemartin.org/>

**Description:**

The Charlotte Martin Foundation, a private independent foundation operating in the Western United States, is dedicated to enriching the lives of youth in the areas of athletics, culture, and education and also to preserving and protecting wildlife and habitat.

## Environmental Education Funding Sources for the Pacific Northwest

---

### Metro Parks & Greenspaces

**Title:**

**Nature in Neighborhoods 2006-07 Grants**

**Description:**

Are you a private property owner, non-profit community group or local government agency that would like to initiate or continue restoration efforts in your neighborhood or watershed? Metro has a new grant program that will be available for nature-friendly projects.



Apply now for 2006-07 grants

**Application deadline**

Pre-applications are due at Metro by 4 p.m., Thursday, January 12, 2006. Submit one completed application form with a brief cover letter. Send your submittal to Metro Nature in Neighborhoods Grant Program, 600 NE Grand Avenue, Portland, OR 97232-2736, Attention: Janelle Geddes.

**Nature in  
Neighborhoods**

**Who can apply?**

Metro is inviting pre-applications from citizen groups, businesses, non-profits, school groups, government agencies and service groups. Projects must be within the Portland area metropolitan service district boundary. With three different categories of grants available, interested parties will be able to find a category that fits their project scope most appropriately.

What are the categories of grant packages that are available?

- **Building Community – Your Neighborhood, Your Watershed (\$1,000 - \$5,000)**

These projects are community level projects that link participants and citizens to their watershed through education and active restoration.

- **Community Challenge for Watersheds (\$5,000 - \$25,000)**

These projects are broader in scope than the Building Community projects. Projects in this category look to develop partnerships and possibly foster innovative public/private enterprise.

- **Creeks to Rivers Regional Challenge (\$25,000 +)**

These projects are the broadest in scope and build upon the other grant categories. Projects in this category have a higher partner and financial match requirement and focus on expanding existing restoration projects or developing projects that become anchor sites for future restoration.

**Questions?**

For more information or to be added to the mailing list, call Janelle Geddes, restoration grants coordinator, at (503) 797-1550 or send email to [NINrestore@metro.dst.or.us](mailto:NINrestore@metro.dst.or.us). The hearing impaired can call TDD (503) 797-1804.

See website: <http://www.metro-region.org/article.cfm?ArticleID=16090>

**Contact:**

**Metro Parks & Greenspaces**

**Janelle Geddes**

**Address:**

600 NE Grand Avenue  
Portland, OR, 97232-2736

**Phone:**

503-797-1850

**Fax:**

503-797-1849

**E-Mail**

**URL:**

<http://www.metro-region.org/>

**Description:**

Metro is working to ensure that you have: access to nature, clean air and water, balanced transportation choices, safe and stable neighborhoods, access to arts and culture, a strong regional economy, resources for future generations.



## Environmental Education Funding Sources for the Pacific Northwest

### Metro Parks & Greenspaces

**Title:**

**Waste Reduction Grants for Schools - Portland Area**

**Description:**

Grants of \$500 for waste reduction projects are available to schools in Multnomah, Washington and Clackamas counties through Metro's waste reduction education program.

Each year beginning in October, Metro awards 30 grants to elementary and secondary schools. The grants are given on a first-come, first-served basis for schools whose applicants successfully complete the application requirements.

Selection criteria - see website

**Project ideas**

Metro has developed these project plans that you may use to apply for a grant (or create your own): - see website for more details

- Recycling containers— increase recycling with more collection containers.
- Exchange station - create a reuse center where unwanted items can be offered to someone else who will use them.
- Waste-free lunch kits— reduce cafeteria waste by promoting waste-free lunches.
- Worm composting— use worm bins to compost fruit and vegetable scraps from lunch and snacks.
- Library resources— increase waste reduction ethic by providing books and videos for school libraries. (elementary only)

For more information on elementary school grants, call Freda Sherburne at (503) 797-1522 or send e-mail to [sherburnef@metro.dst.or.us](mailto:sherburnef@metro.dst.or.us).

For information on secondary school grants, call Amy Wilson at (503) 797-1521 or send e-mail to [wilsona@metro.dst.or.us](mailto:wilsona@metro.dst.or.us).

Website: <http://www.metro-region.org/article.cfm?ArticleID=539>

**Contact:**

**Metro Parks & Greenspaces**

**Amy Wilson**

**Address:**

600 NE Grand Avenue  
Portland, OR, 97232-2736

**Phone:**

503-797-1850

**Fax:**

503-797-1849

**E-Mail**

**URL:**

<http://www.metro-region.org/>

**Description:**

Metro is working to ensure that you have: access to nature, clean air and water, balanced transportation choices, safe and stable neighborhoods, access to arts and culture, a strong regional economy, resources for future generations.

## Environmental Education Funding Sources for the Pacific Northwest

### Mid-Sound Fisheries Enhancement Group

**Title:** Partnerships and Matching Funds for Salmon Enhancement and Preservation

**Description:** Mid-Sound Fisheries Enhancement Group implements stream restoration projects in the Mid-Puget Sound region (King and Kitsap Counties) i.e., passage barrier removal, wood installation, invasive plant removal, native plantings, plant salvages and propagation events, and nutrient enhancement (fish carcass distribution). This work is done primarily on private land, however some work is done on public land or conservation easements.



Landowners in the Green River Watershed, Cedar/Lake Washington Watershed, OR Eastern Kitsap County interested in having restoration work done on your stream should contact Troy Fields, Executive Director. Mid Sound is available for partnering up with or providing matching funds to agencies or organizations that implement stream restoration.

**Contact:** Mid-Sound Fisheries Enhancement Group  
Troy Fields

**Address:** 7400 Sand Point Way NE  
Seattle, WA, 98115

**Phone:** 206-529-9467

**Fax:** (206) 529-9468 (upon request)

**E-Mail:** [info@midsoundfisheries.org](mailto:info@midsoundfisheries.org)

**URL:** <http://www.midsoundfisheries.org/>

**Description:** Mid-Sound is a non-profit organization based in Seattle that restores salmonid habitat through community partnerships in King and Kitsap Counties.

## **Environmental Education Funding Sources for the Pacific Northwest**

### **Leo Model Foundation**

**Title:** **Environmental Grants Available**

**Description:** Focus: Culture, education, and public information, environment, health and human services, and social and economic justice.

Grand Types:: General Support, Special Projects.  
Limitations: Individuals.  
Area: Local Funding, Philadelphia, New York City, National  
How to Apply: Letter.  
Average Grant: \$5,000.

Submit a full proposal to include copy of IRS tax-exempt status, description of organizations purpose and programs, board list, staff list, and financial statements.

**Contact:** **Leo Model Foundation**

**Address:** **Allen Model**  
310 South Juniper Street  
Philadelphia, PA, 19107-5818

**Phone:** 215-546-8085  
**Fax:** 215-546-0664  
**E-Mail:**  
**URL:**  
**Description:**

## Environmental Education Funding Sources for the Pacific Northwest

### The Mountaineers Foundation

Title:

**Environmental Grants**

Description:



The Mountaineers Foundation promotes the study of the mountains, forests and streams of the Pacific Northwest, and contributes to preserving its natural beauty and ecological integrity. We fund modest short-term projects consistent with those purposes. Our funding criteria are based on our by-laws, articles of incorporation, and status as an IRS-designated 501(c)(3) organization.

#### **We Support:**

- selected projects of 501(c)(3) or of other non-profit organizations and of certain agencies such as libraries and schools; and, occasionally, projects by individuals.
- research about the natural environment: studies that will yield new data aimed at protecting Northwest wilderness and wildlife
- biologic, economic, legal, or policy studies direct educational programs and materials related to environmental preservation:
  - lectures, conferences, seminars
  - written or audiovisual awareness materials
  - curriculum or other instructional materials
  - publication of conference proceedings, journal articles
- other fundable projects: seed or pilot studies that can be continued with funding from other sources
- selected capital improvement projects (e.g., restoration;
- assistance in purchasing equipment/materials)

**Application deadlines are: January 1, March 1, May 1, August 1, and October 1.**

See website for details: <http://www.mountaineersfoundation.org/>

**Contact:**

**The Mountaineers Foundation**

**Address:**

**Grants Screening Committee**  
c/o Grants Screening Committee, P.M. Box 525  
Seattle, WA, 98119  
206-264-5697

**Phone:**

**Fax:**

**E-Mail**

**URL:**

<http://www.mountaineersfoundation.org/>

**Description:**

Study Mountains, Forests & Streams To Preserve Natural Beauty

## **Environmental Education Funding Sources for the Pacific Northwest National Association for Humane and Environmental Education NAHEE**

**Title:** **National KIND Teacher Award**

**Description:** Are you a K-6 classroom teacher who includes lessons about kindness to people, animals, and the environment in your curriculum? Do you know a teacher who does so in an effective, innovative manner? Perhaps you—or one of your colleagues—will become our 2005 National KIND Teacher!

Each year since 1981, the National Association for Humane and Environmental Education has recognized an outstanding teacher who consistently incorporates humane and environmental education into his or her curriculum. To nominate yourself or another K-6 teacher for this award, please fill out our online nomination form.

**The deadline for nominations is February 15, 2007**, and the winner will be notified before the end of the 2006-2007 school year.

Website: [http://www.nahee.org/awards/national\\_kind\\_teacher\\_award.asp](http://www.nahee.org/awards/national_kind_teacher_award.asp)

**Contact:** **National Association for Humane and Environmental Education NAHEE**

**Address:** 67 Norwich Essex Turnpike  
East Haddam, CT, 06423-1736

**Phone:** (860) 434-8666

**Fax:**

**E-Mail:** [nahee@nahee.org](mailto:nahee@nahee.org)

**URL:** <http://www.nahee.org/>

**Description:** Fostering kindness toward people, animals, and the earth.

## Environmental Education Funding Sources for the Pacific Northwest

### National Fish & Wildlife Foundation

**Title:**

**Five-Star Restoration Matching Grants Program**

**Description:**

The Five Star Restoration Program brings together students, conservation corps, other youth groups, citizen groups, corporations, landowners and government agencies to provide environmental education and training through projects that restore wetlands and streams. The program provides challenge grants, technical support and opportunities for information exchange to enable community-based restoration projects. Funding levels are modest, from \$5,000 to \$20,000, with \$10,000 as the average amount awarded per project. However, when combined with the contributions of partners, projects that make a meaningful contribution to communities become possible. To date, over 300 projects have been funded through the Five Star Program.



**How to Apply**

The Five-Star Restoration Matching Grants Program is open to any public or private entity. Applicants should complete the attached application form, including project narrative and budget request. Proposals for Five Star Restoration Grants are due in early March each year. Grant applicants are notified in late May-early June each year.

See EPA's website for details: <http://www.epa.gov/owow/wetlands/restore/5star/>

**Contact:**

**National Fish & Wildlife Foundation**

**Tom Kelsch**

**Address:**

1120 Connecticut Avenue, NW, Suite 900  
Washington, DC, 20036

**Phone:**

202-857-0166

**Fax:**

202-857-0162

**E-Mail**

**URL:**

<http://www.nfwf.org>

**Description:**

The National Fish and Wildlife Foundation is a private, non-profit, 501(c)(3) tax-exempt organization, established by Congress in 1984 and dedicated to the conservation of fish, wildlife, and plants, and the habitat on which they depend.

## Environmental Education Funding Sources for the Pacific Northwest

---

# National Fish & Wildlife Foundation

**Title:**

**Pulling Together Initiative**

**Description:**

**Public-Private Partnerships to Manage Invasive Weeds**

**Program Description**

The Pulling Together Initiative (PTI) provides support on a competitive basis for the formation of local Weed Management Area (WMA) partnerships. These partnerships engage federal resource agencies, state and local governments, private landowners, and other interested parties in developing long-term weed management projects within the scope of an integrated pest management strategy. The goals of PTI are:



- To prevent, manage, or eradicate invasive and noxious plants through a coordinated program of public/private partnerships.
- To increase public awareness of the adverse impacts of invasive and noxious plants.

**This Request for Proposals will fund projects occurring between May 1, 2006, and September 30, 2007.**

See full description: <http://www.nfwf.org/programs/pti.cfm>

**Contact:**

**National Fish & Wildlife Foundation**

**Jonathan Mawdsley**

**Address:**

1120 Connecticut Avenue, NW, Suite 900  
Washington, DC, 20036

**Phone:**

202-857-0166

**Fax:**

202-857-0162

**E-Mail**

**URL:**

<http://www.nfwf.org>

**Description:**

The National Fish and Wildlife Foundation is a private, non-profit, 501(c)(3) tax-exempt organization, established by Congress in 1984 and dedicated to the conservation of fish, wildlife, and plants, and the habitat on which they depend.

## Environmental Education Funding Sources for the Pacific Northwest

### National Fish & Wildlife Foundation

**Title:**

**The Nature of Learning Grants Program**

**Description:**

***The Nature of Learning*** supports the FWS Manual Policy (605 FW 6) as an environmental education initiative that has the ability to promote awareness, appreciation, and understanding of the role that the Refuge System plays in the conservation of wildlife. As a priority use, FWS encourages environmental education within refuge missions and purposes, supports site-specific environmental education, and uses on-site programs to focus on refuge issues and emphasize species of importance. Meeting the education objectives of the Refuge System is an important goal of ***The Nature of Learning*** but it will take the collaboration that includes the community to achieve it.

**Who should apply for *The Nature of Learning* start-up grants?**

Schools or non-profit organizations, including "Friends" groups, Cooperative and Interpretive Associations, Audubon Chapters, are eligible to apply for funding.

**How to Apply**

Applicants should complete the attached application form, including project narrative and budget request. Applications must be postmarked by **June 1, 2006**. Projects will be evaluated to the extent by which the above guidelines are met. Applicants will be notified of their awards by **October 1, 2006**. Please do not contact the Foundation before this date in regards to the status of your application.

For detailed information see website: <http://www.nfwf.org/programs/tnol.cfm>

**Contact:**

**National Fish & Wildlife Foundation**

**Lauren Madden**

**Address:**

1120 Connecticut Avenue, NW, Suite 900  
Washington, DC, 20036

**Phone:**

202-857-0166

**Fax:**

202-857-0162

**E-Mail**

**URL:**

<http://www.nfwf.org>

**Description:**

The National Fish and Wildlife Foundation is a private, non-profit, 501(c)(3) tax-exempt organization, established by Congress in 1984 and dedicated to the conservation of fish, wildlife, and plants, and the habitat on which they depend.



## Environmental Education Funding Sources for the Pacific Northwest

### National Fish & Wildlife Foundation - Pacific Northwest Region

**Title:** King County Community Salmon Fund  
**Description:** **Deadline for Pre-Proposals: May 19, 2006**

**Background** The National Fish and Wildlife Foundation (NFWF) and King County have established the Community Salmon Fund to stimulate small-scale, voluntary action by community groups, in cooperation with landowners and businesses, to support salmon recovery on private property\* in King County and South Snohomish County. Federal, state, tribal, and local governments, educational institutions, and nonprofit conservation organizations are welcome to apply. Grants will be jointly selected by King County and NFWF and administered by the Foundation. This round, funding will also be available for projects aimed at engaging new partners in salmon recovery.

The goals of the Community Salmon Fund are to:

- Fund habitat protection and restoration projects that have a substantial benefit to watershed health.
- Engage landowners, business owners, and community groups to carry out these projects and care for them in the long run.
- Stimulate creativity and leadership among various constituencies to address conservation needs.
- Target constituencies that can be particularly helpful in salmon recovery, especially farmers, rural forest owners, suburban homeowners, and owners of businesses and industries.

#### Further Information

For more information about the Community Salmon Fund, contact Autumn Salamack [asalamack@evergreenfc.com](mailto:asalamack@evergreenfc.com) at 206-691-0700.

Website: <http://www.nfwf.org/programs/csf/king.cfm>

**Contact:** **National Fish & Wildlife Foundation - Pacific Northwest Region**

**Address:** Autumn Salamack  
806 SW Broadway, Suite 750  
Portland, OR, 97205  
**Phone:** 503-417-8700  
**Fax:** 503-417-8787

**E-Mail**

**URL:** <http://www.nfwf.org/>

**Description:** The National Fish and Wildlife Foundation is a nonprofit charitable organization dedicated to the conservation and management of native fish, wildlife, and plant resources, and the habitats on which they depend.

## Environmental Education Funding Sources for the Pacific Northwest

---

### National Fish & Wildlife Foundation - Pacific Northwest Region

**Title:** **Pierce County Community Salmon Fund**  
**Description:** **Deadline for Proposals: December 2, 2005**

**Background** The National Fish and Wildlife Foundation (NFWF) and Pierce County have established the Community Salmon Fund to stimulate small-scale, voluntary action by community groups, in cooperation with landowners and businesses, to support salmon recovery on private property in Pierce County. Federal, state, tribal, and local governments, educational institutions, and nonprofit conservation organizations are welcome to apply. Grants will be jointly selected by Pierce County and NFWF and administered by the Foundation. This round, funding will also be available for projects aimed at engaging new partners in salmon recovery. Please see Creative Partnership Grants below for details.

**Eligible Costs** The Fund will award grants of up to \$40,000. The following costs are eligible:

- ◆ Restoration of habitat within and along salmon-bearing rivers and streams.
- ◆ Acquisition of riparian habitat.
- ◆ Project design and development that is anticipated to lead to an on-the-ground restoration project within 18 months.

For more information about the Community Salmon Fund, contact Nick Pearson (npearson@evergreenfc.com) or Autumn Salamack (asalamack@evergreenfc.com) at 206-691-0700. This document and links to the application form are available at <http://www.nfwf.org/programs/csf/pierce.cfm>

**Contact:** **National Fish & Wildlife Foundation - Pacific Northwest Region**  
**Autumn Salamack**  
**Address:** 806 SW Broadway, Suite 750  
Portland, OR, 97205  
**Phone:** 503-417-8700  
**Fax:** 503-417-8787  
**E-Mail**  
**URL:** <http://www.nfwf.org/>  
**Description:** The National Fish and Wildlife Foundation is a nonprofit charitable organization dedicated to the conservation and management of native fish, wildlife, and plant resources, and the habitats on which they depend.

## Environmental Education Funding Sources for the Pacific Northwest

### National Forest Foundation

**Title:**

**Matching Awards Program (MAP)**

**Description:**



Provides grants requiring a non-federal cash match for conservation projects on and around National Forests and grasslands.

**Guidelines for Proposals**

The National Forest Foundation (NFF) is a private, nonprofit 501(c)(3) tax-exempt organization dedicated to safeguarding our National Forests and Grasslands by building action-oriented partnerships with local communities that result in lasting conservation. Through our Matching Awards Program (MAP), nonprofit organizations, educational institutions, and state and local governments can apply for funding twice a year. The program requires that every dollar invested be matched with private, non-federal funds, effectively doubling the total contribution to local conservation initiatives that address the issues directly affecting forest health.

During the 2006 MAP, the NFF will concentrate its efforts in five geographic focus areas: Southern Appalachians (TN, NC, SC, GA), Oregon Coast and Central Cascades, the Selway-Bitterroot (MT, ID), Central Colorado Rockies, and Central Sierra (CA). The NFF will accept applications from non-governmental, nonprofit 501(c)(3) organizations working on or adjacent to National Forests and Grasslands. For the 2006 MAP, approximately 80 percent of available funds will be allocated to projects within the five current geographic priority areas, and the remaining 20 percent is available for projects outside these areas. Groups nationwide are eligible to apply. Through the NFF MAP, community-based nonprofit 501(c)(3) organizations completing on-the-ground conservation work can apply for matching funds twice a year.

**Who Can Apply:**

Applications will be accepted from non-federal partners, community-based organizations, Native American tribes, educational institutions, and other non-profit 501(c)(3) organizations.

**Deadlines:**

**Round 1: Pre-proposals due to the NFF: Friday, January 27, 2006**

**Round 2: Pre-proposals due to the NFF: Friday, July 28, 2006**

See website: [http://www.natlforests.org/consp\\_04\\_map.html](http://www.natlforests.org/consp_04_map.html)

**Contact:**

**National Forest Foundation**

**Alexandra Kenny**

**Address:**

2715 M Street NW, Suite 410  
Washington, DC, 20007

**Phone:**

206-298-6740

**Fax:**

206-298-6758

**E-Mail**

**URL:**

<http://www.natlforests.org/index.html>

**Description:**

NFF was created in 1990 by the United States Congress, pursuant to Public Law No. 101-593 to serve as the official non-profit partner of the USDA Forest Service.

## Environmental Education Funding Sources for the Pacific Northwest

### National Gardening Association

**Title:**

**2007 Mantis Award Program**

**Description:**

Mantis proudly announces its expanded 2006 Award Program in support of charitable and educational garden programs that enhance the quality of life in their host communities. In partnership with Mantis, the NGA will select 25 gardens to receive prizes: 20 will receive Mantis Tiller/Cultivators (each complete with border edger and introductory video); five (5) will receive Compost-Twin dual-chamber composting systems. We welcome applications from all nonprofits — past winners include community gardens, schools, ministries, colleges, master gardening groups, and hospices. In addition to the application, candidates are asked to send a photo of the garden and a diagram of garden layout and dimensions.



**This grant is closed for the 2006 cycle.**

If you'd like us to notify you when the 2007 application is available, please sign up for Kids Garden News e-newsletter.

When you click on the **DOWNLOAD APPLICATION FORM** link, a form will appear requiring you to submit your name and address. (See our privacy policy if you have questions about how we use the information.) When you complete it and click the submit button, you will be able to download the award application. **DOWNLOAD APPLICATION FORM**

View the list of 2006 Mantis Award winners

See website: <http://www.kidsgardening.com/awards.asp>

**Contact:**

**National Gardening Association**

**Address:**

100 Dorset Street  
South Burlington, VT, 05403

**Phone:**

802-863-5251

**Fax:**

802-864-6889

**E-Mail**

mailto:

**URL:**

<http://www.kidsgardening.com/>

**Description:**

## Environmental Education Funding Sources for the Pacific Northwest

### National Gardening Association

**Title:**

**2007 Youth Garden Grants Program**

**Description:**



National Gardening Association and The Home Depot™ present the 2007 Youth Garden Grants™ Program



NGA is delighted to announce that The Home Depot has returned as our Youth Garden Grants sponsor for 2007. Over the last 24 years, NGA's Youth Garden Grants program has helped more than 1.3 million youngsters reap rewards and vital life lessons from working in gardens and habitats, and thanks to the generosity of The Home Depot, we can reach many more eager young learners.



**Who should apply:** Schools, youth groups, community centers, camps, clubs, treatment facilities, and intergenerational groups throughout the United States are eligible. Applicants must plan to garden in 2007 with at least 15 children between the ages of three and 18 years. Previous Youth Garden Grant winners who wish to reapply must wait one year and have significantly expanded their garden programs.

Website: <http://www.kidsgardening.com/grants.asp#mantis>

**Contact:**

**National Gardening Association**

**Address:**

100 Dorset Street  
South Burlington, VT, 05403

**Phone:**

802-863-5251

**Fax:**

802-864-6889

**E-Mail**

mailto:

**URL:**

<http://www.kidsgardening.com/>

**Description:**

## Environmental Education Funding Sources for the Pacific Northwest

### National Gardening Association

**Title:**

**Healthy Sprouts Award**

**Description:**

The National Gardening Association and Gardener's Supply Company have partnered to support schools and community organizations that use gardens to teach about nutrition and explore the issue of hunger in the United States. Each of twenty-five programs receives an award package of seeds, tools, garden products, and educational resources for growing a vegetable garden. Five of these programs also receive \$500 cash and a \$200 gift certificate to the Gardener's Supply Company catalog. The selection of winners is based on the demonstrated relationship between the garden and nutrition education and hunger awareness. At least 10% of the food produced from the program should be donated. Applications are available on our Web site in January.



**Annual application deadline:** March 31.

**Website:** <http://www.kidsgardening.com/grants.asp#sprouts>

**Contact:**

**National Gardening Association**

**Address:**

100 Dorset Street  
South Burlington, VT, 05403

**Phone:**

802-863-5251

**Fax:**

802-864-6889

**E-Mail:**

mailto:

**URL:**

<http://www.kidsgardening.com/>

**Description:**

## Environmental Education Funding Sources for the Pacific Northwest

### National Gardening Association

**Title:**

**Hooked on Hydroponics Awards**

**Description:**

The National Gardening Association joins the Hydroponic Merchants Association and leading hydroponic gardening suppliers in presenting this 2nd annual award. Classroom hydroponics offers eager students loads of opportunities to explore concepts across the curriculum, from biology to economics. Twelve educational programs will each receive a hydroponics package that fits its classroom space and includes everything required grow plants successfully indoors. Applicants should explain how the equipment included in the award will be used to further the educational process, and indicate what efforts have been or will be used to publicize the impact of their school's use of hydroponics. Retail value of awards ranges from \$425 to \$1,425.. Application deadline: **September 30, 2006.**



For full details, visit here: <http://www.kidsgardening.com/awards.asp#mantis>

**Contact:**

**National Gardening Association**

**Address:**

100 Dorset Street  
South Burlington, VT, 05403

**Phone:**

802-863-5251

**Fax:**

802-864-6889

**E-Mail**

mailto:

**URL:**

<http://www.kidsgardening.com/>

**Description:**

## Environmental Education Funding Sources for the Pacific Northwest

### National Gardening Association

**Title:**

**Kids Growing With Dutch Bulbs**

**Description:**

A program of the Mailorder Gardening Association and its partners, The International Flower Bulb Center, Dutch Bulb Exporters, and the North American Flower Bulb Wholesalers Association, this 12th annual award supplies 500 schools with a package of 200 premium Dutch flowering bulbs. Selection criteria include student involvement, curriculum integration, and administrative support.



This grant is closed for the 2006 grant cycle. If you'd like a reminder when the application is available, please subscribe to Kids Garden News monthly e-newsletter.

When you click on the **DOWNLOAD APPLICATION FORM** link, a form will appear requiring you to submit your name and address. (See our privacy policy if you have questions about how we use the information.) When you complete it and click the submit button, you will be able to download the award application. **DOWNLOAD APPLICATION FORM**

View the list of 2005 Kids Growing with Dutch Bulb winners

See website: <http://www.kidsgardening.com/awards.asp#mantis>

**Contact:**

**National Gardening Association**

**Address:**

100 Dorset Street  
South Burlington, VT, 05403

**Phone:**

802-863-5251

**Fax:**

802-864-6889

**E-Mail**

mailto:

**URL:**

<http://www.kidsgardening.com/>

**Description:**



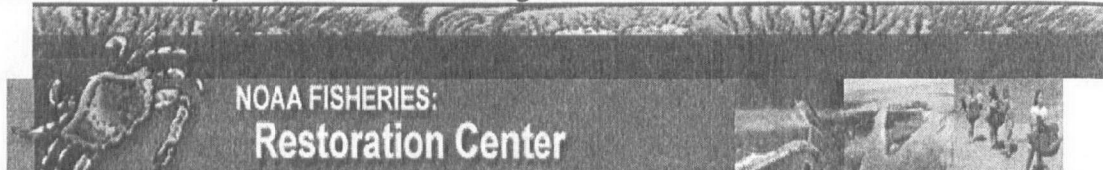
## Environmental Education Funding Sources for the Pacific Northwest

### NOAA Restoration Center

Title:

#### NOAA Community-based Restoration Program

Description:



In 1996, the NOAA Restoration Center (NOAA RC) began its Community-based Restoration Program, which provides funding, through a competitive process, for local efforts to restore coastal habitat. The purpose of the program is to promote coastal stewardship and a conservation ethic among coastal communities while fostering the development of restoration partnerships and expertise among NOAA Fisheries personnel. Since its inception, the Community-based Restoration Program has partnered on over 600 projects, many of which are ongoing today.

NOAA's Community-based Restoration Program (CRP) partners with grassroots organizations to encourage hands-on citizen participation in restoration projects. This participation builds coalitions of interested citizens and fosters long-term stewardship of the nation's coastal and marine resources. Since 1996, the CRP has funded more than 1000 on-the-ground restoration projects in 27 states, Canada, and the Caribbean.

Website: [http://www.nmfs.noaa.gov/habitat/restoration/funding\\_opportunities/funding.html](http://www.nmfs.noaa.gov/habitat/restoration/funding_opportunities/funding.html)

Contact:

#### NOAA Restoration Center

Address:

NOAA Fisheries, F/HC-3, 1315 East-West Highway  
Silver Spring, MD, 20910

Phone:

301-713-0164

Fax:

307-713-0184

E-Mail

URL:

<http://www.nmfs.noaa.gov/habitat/restoration/>

Description:

The NOAA Restoration Center enhances living marine resources to benefit the nation's fisheries by restoring their habitats.

## Environmental Education Funding Sources for the Pacific Northwest

---

### Northwest Fund for the Environment

**Title:**

**Washington Natural Resources Funding**

**Description:**



**Our Next Deadline Is:**

**February 16 2006**

**We have only one grantmaking cycle per year**

*The process for applying to the NWFE has changed from past years. Please see our Application Process for more information. Unsolicited proposals will not be accepted. Letters of Inquiry must be accompanied by a current Cover Sheet, which can only be obtained by calling NWFE staff.*

All giving will be in our recently announced program areas: Growth Management and Aquatic ecosystems Protection. These are squarely rooted in our core mission to increase the protection and preservation of the natural resources of Washington State. For more information on these areas please visit our *Program Area Descriptions* page.

See website for details: <http://www.nwfund.org/>

**Contact:**

**Northwest Fund for the Environment**

**Pam Fujita-Yuhas and Zoë Rothchild**

**Address:**

1904 Third Ave., Suite 615

Seattle, WA, 98101

**Phone:**

206-386-7220

**Fax:**

206-386-7223

**E-Mail**

[staff@nwfund.org](mailto:staff@nwfund.org)

**URL:**

<http://www.nwfund.org/>

**Description:**

Grants by the Northwest Fund are from an endowment designated to be spent promoting change in the uses of natural resources which will increase their protection and preservation in the State of Washington.

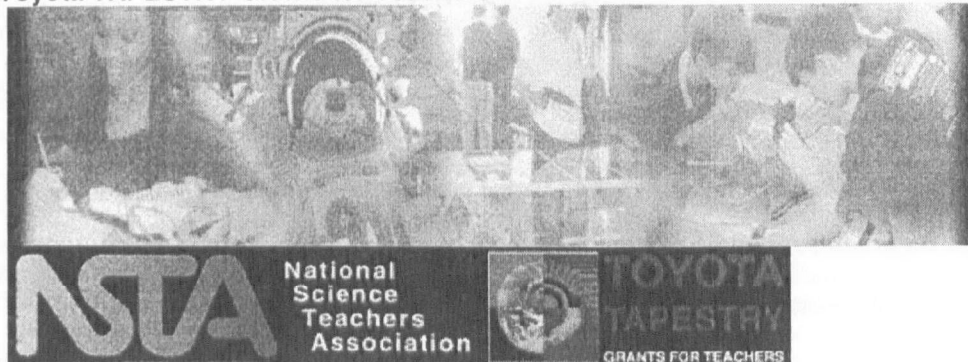
## Environmental Education Funding Sources for the Pacific Northwest

### NSTA/Toyota TAPESTRY

Title:

Toyota TAPESTRY Grants for Teachers

Description:



**Congratulations to our 2006 awardees!**

**Coming Summer 2006:  
Our New Online Application!**

Eligibility Open to K-12 teachers of science residing in the United States or U.S. territories or possessions. All middle and high school science teachers and elementary teachers who teach some science in the classroom are eligible.

Program Summary Proposals must describe a project including its potential impact on students, and a budget up to \$10,000 up to \$2,500 for mini-grants). Toyota TAPESTRY grants will be awarded in three categories:

- Environmental Science Education
- Physical Science Applications
- Literacy and Science Education

See website for more details: <http://www.nsta.org/programs/tapestry/>

**Contact:**

**NSTA/Toyota TAPESTRY**

**Address:**

1840 Wilson Boulevard  
Arlington, VA, 22201-3000

**Phone:**

**Fax:**

**E-Mail**

**URL:**

**Description:**

mailto:

<http://www.nsta.org/programs/tapestry/index.htm>

Toyota TAPESTRY is a partnership between Toyota Motor Sales, U.S.A. and NSTA. Toyota funds and NSTA administers the program.

## Environmental Education Funding Sources for the Pacific Northwest

### The Oregon Community Foundation

<b>Title:</b>	<b>Oregon Historic Trails Fund</b>
<b>Description:</b>	<p>Grants are made each fall from the Oregon Historic Trails Fund to support projects that interpret, preserve, or maintain trail-related resources. Grants may be awarded also for marketing, education, advocacy, and research related to historic trails.</p> <p>An advisory committee made up of people who are knowledgeable about Oregon's historic trails and cultural resources review grant applications and makes recommendations to The Oregon Community Foundation board of directors. Approximately \$40,000 is available each year.</p> <p>The purpose of the fund is to develop interpretive, educational, and economic projects to preserve and protect the cultural and natural resources of Oregon's historic trails.</p> <p><b>September 1:</b> Grant applications due at The Oregon Community Foundation (OCF).</p> <p>See website: <a href="http://www.oregonhistorictailsfund.org/apply.php">http://www.oregonhistorictailsfund.org/apply.php</a></p>
<b>Contact:</b>	<b>The Oregon Community Foundation</b>
<b>Address:</b>	1221 SW Yamhill Suite 100 Portland, OR, 97205
<b>Phone:</b>	503-227-6846
<b>Fax:</b>	
<b>E-Mail</b>	<a href="mailto:info@oregonhistorictailsfund.org">info@oregonhistorictailsfund.org</a>
<b>URL:</b>	<a href="http://www.oregonhistorictailsfund.org/index.php">http://www.oregonhistorictailsfund.org/index.php</a>
<b>Description:</b>	The Oregon Historic Trails Fund is managed by The Oregon Community Foundation and an advisory committee, and awards annual grants to develop, interpret and improve Oregon's historic trails.

## Environmental Education Funding Sources for the Pacific Northwest

# Oregon Sea Grant

Title:

Oregon Sea Grant Funding Opportunities

Description:



### Grants & Fellowships

Oregon Sea Grant provides a variety of competitive and noncompetitive funding opportunities for university-based research and outreach faculty who seek to address questions related to ocean or coastal science. Projects often involve collaboration with scientists from public and private agencies, and from other parts of the world. In addition, Sea Grant offers a variety of fellowship opportunities to qualified graduate students.

Please bookmark this page as your entry point for detailed information about applying for, managing and reporting on grants and fellowships available through Oregon Sea Grant.

#### Applying for grants

- ◆ Current and upcoming requests for proposals (open to faculty from institutions across Oregon.):

- o Call for research proposals **March 2006–February 2008** - (the submission deadline is past, but this information will remain on line for those considering submitting during our next funding cycle)

- ◆ Oregon Sea Grant Strategic Plan, including:

- o Decision-making filters and criteria

- ◆ Webnibus - Sea Grant's on-line proposal submission and review system

- ◆ Program Development grants - small grants available between regular funding cycles

See website for details: <http://seagrant.oregonstate.edu/funding/index.html>

Contact:

**Oregon Sea Grant**

Address:

**Sea Grant Administrator**

Oregon State U, 322 Kerr Administration  
Corvallis, OR, 97331

Phone:

541-737-2714

Fax:

541-737-2392

E-Mail

[sghelp@seagrant.orst.edu](mailto:sghelp@seagrant.orst.edu)

URL:

<http://seagrant.orst.edu/>

Description:

Oregon Sea Grant works to further knowledge of the marine and coastal environments of the Pacific Northwest, and the forces--natural and human-- that shape their destiny.

## Environmental Education Funding Sources for the Pacific Northwest

### Oregon Watershed Enhancement Board

**Title:**

**Oregon Watershed Enhancement Board Education and Outreach Grants**

**Description:**

WEB is soliciting grant applications for the October 24, 2005 application deadline only for projects that address the "Improve Knowledge" element of the Board's May 2005 Education and Outreach Strategy (Summary PDF ).  
[http://www.oregon.gov/OWEB/GRANTS/docs/EducationOutreach\\_Strategy2005.pdf](http://www.oregon.gov/OWEB/GRANTS/docs/EducationOutreach_Strategy2005.pdf)



Projects that are primarily outreach/awareness or skills development, as defined in the Strategy, are not eligible for consideration for this grant cycle.

**Education and outreach applications may be submitted anytime; the next deadline is Monday, October 16, 2006, by 5:00 p.m.**

Oregon Watershed Enhancement Board (OWEB)  
775 Summer Street NE, Suite 360  
Salem, OR 97301-1290  
(503) 986-0178

See website:  
[http://www.oregon.gov/OWEB/GRANTS/education\\_grants.shtml#Guidance\\_Materials](http://www.oregon.gov/OWEB/GRANTS/education_grants.shtml#Guidance_Materials)

**Contact:**

**Oregon Watershed Enhancement Board**

**Melissa Leoni**

**Address:**

775 Summer Street, Suite 360  
Salem, OR, 97301-1290

**Phone:**

503-986-0185

**Fax:**

503-986-0199

**E-Mail**

**URL:**

<http://www.oweb.state.or.us/>

**Description:**

The mission of the Oregon's Watershed Enhancement Board is to promote and implement programs to restore, maintain and enhance watersheds in the State of Oregon in order to protect the economic and social well-being of the state and its citizens.



## Environmental Education Funding Sources for the Pacific Northwest

### Oregon Watershed Enhancement Board

**Title:**

**Oregon Watershed Enhancement Board Small Grant Program**

**Description:**

The Small Grant Program is an easy-to-engage-in, competitive grant program that awards funds of up to \$10,000 for on-the-ground restoration projects.



Since its inception in 2001, OWEB's Small Grant Program has funded over 650 Small Grant projects on principally private lands across Oregon. The Small Grant Program responds to a need for local decision-making about watershed restoration opportunities on a shorter timeframe than is available under OWEB's regular grant program.

The Small Grant Program enables landowners across the state to contribute to the Oregon Plan for Salmon and Watersheds by committing "small acts of kindness" on their properties for the benefit of water quality, water quantity, and fish and wildlife. From planting native plants along stream sides to reducing sedimentation and erosion from upland farms and ranches, citizens everywhere can make a difference.

See website: [http://www.oregon.gov/OWEB/GRANTS/smgrant\\_main.shtml](http://www.oregon.gov/OWEB/GRANTS/smgrant_main.shtml)

**Contact:**

**Oregon Watershed Enhancement Board**

**Melissa Leoni**

**Address:**

775 Summer Street, Suite 360  
Salem, OR, 97301-1290

**Phone:**

503-986-0185

**Fax:**

503-986-0199

**E-Mail**

**URL:**

<http://www.oweb.state.or.us/>

**Description:**

The mission of the Oregon's Watershed Enhancement Board is to promote and implement programs to restore, maintain and enhance watersheds in the State of Oregon in order to protect the economic and social well-being of the state and its citizens.

## Environmental Education Funding Sources for the Pacific Northwest

### Plant Conservation Alliance, Bureau of Land Management

Title:

Native Plant Conservation Initiative

Description:



**PROJECT PROPOSALS DUE:** This Request for Proposals includes two separate grant cycles, with pre-proposal submission dates of February 17 and August 25, 2006.

The National Fish and Wildlife Foundation, in partnership with the Plant Conservation Alliance, is pleased to announce a Request for Proposals for the 2005 Native Plant Conservation Initiative (NPCI). Through this initiative, grants of federal dollars will be provided to non-profit organizations and agencies at all levels of government\* to promote the conservation of native plants. This Request for Proposals includes two separate grant cycles, with pre-proposal submission dates of February 15 and August 21, 2005.

The NPCI grant program is conducted in cooperation with the Plant Conservation Alliance (PCA), a cooperative partnership between the Foundation, ten federal agencies, and nearly 200 non-governmental organizations. PCA provides a framework and strategy for linking resources and expertise in developing a coordinated national approach to the conservation of native plants. All NPCI proposals are reviewed by members of the PCA National Steering Committee. For additional information about PCA, please visit the PCA website(<http://www.nps.gov/plants/>).

NPCI grants are modest, ranging from \$5,000 to \$40,000 with an average grant size of \$15,000. It is expected that all grant funds will be matched by non-federal contributions from project partners. In-kind contributions of goods or services are eligible as match for this program.

See website: <http://www.nfwf.org/programs/npci.cfm>

Contact:

**Plant Conservation Alliance, Bureau of Land Management**  
**Ellen Gabel**

Address:

1849 C Street NW, LSB-204  
Washington, DC, 20240

Phone:

Fax:

E-Mail

URL:

<http://www.nps.gov/plants/index.htm>

Description:

The NPCI grant program is conducted in cooperation with the Plant Conservation Alliance (PCA), a cooperative partnership between the Foundation, ten federal agencies, and nearly 200 non-governmental organizations.



## Environmental Education Funding Sources for the Pacific Northwest

### Project Learning Tree

Title:

GreenWorks! Grants

Description:



Do you have an idea for an exciting service-learning or community action project for your students but you don't have enough funds to implement it? Why not apply for one of PLT's GreenWorks! grants? GreenWorks! offers educators the opportunity to apply for grants ranging from \$50 to \$1000 to implement community action and service-learning projects. Across the country, PLT trained educators teaching in both formal and non-formal settings are eligible to apply for and receive GreenWorks! grants.

*GreenWorks!* projects should address an environmental issue and involve students from pre-school to high school in hands-on community action.

*GreenWorks!* grant proposals will be accepted starting

**Thank you for your interest in GreenWorks! The deadline for other GreenWorks! grants is September 30, 2005.**

Mail your proposals to:  
Project Learning Tree *GreenWorks!* Grants  
1111 19th Street, NW #780  
Washington, DC 20036

(Note: E-mail and faxed proposals will not be accepted!)

See website for more details [http://www.plt.org/cms/pages/21\\_22\\_21.html](http://www.plt.org/cms/pages/21_22_21.html)

Contact:

Project Learning Tree

Address:

11111 19th Street, NW #780  
Washington, DC, 20036

Phone:

Fax:

E-Mail

URL:

<http://www.plt.org/>

Description:

Project Learning Tree® (PLT) is an award winning, broad based environmental education program for educators and students in PreK - grade 12. PLT helps students learn HOW to think, not WHAT to think, about the environment.

## Environmental Education Funding Sources for the Pacific Northwest

### Puget Sound Action Team

Title:  
Description:

#### Public Involvement & Education (PIE) Funding The PIE Fund: Helping you help Puget Sound

**The next round of PIE will be offered in 2007.**

If you would like to be placed on our PIE email list to be notified of future funding opportunities, contact Gigi Williams - [gwilliams@psat.wa.gov](mailto:gwilliams@psat.wa.gov)



#### Can your program use a helping of PIE?

The Puget Sound Action Team is looking for partners to encourage people and communities to take actions to protect and restore Puget Sound through its long-standing Public Involvement and Education (PIE) Fund.

Project scope: Projects must benefit the Puget Sound Basin and address one or more of three specific funding priorities: pollution, habitat and salmon recovery.

PIE is not a grant program. Through personal service contracts, the Action Team obtains the services of individuals and organizations to carry out the 2005-2007 Puget Sound Conservation and Recovery Plan. Services provided under a PIE contract are compensated on a reimbursement basis.

**Application deadline: January 9, 2006, 5:00 p.m.**

Award amount: Maximum funding per project is \$45,000, with a total of at least \$400,000 available. The Action Team encourages but does not require matching funds.

Eligibility: Residents of Washington state, businesses, organizations, watershed or salmon groups, tribal or local governments, schools or educators. Federal agencies may not receive PIE funds.

Workshop: Puget Sound Action Team education and outreach staff are available to answer your questions about PIE. A Proposal Assistance Workshop will be held on December 14 from 9:30 to 12:30 pm at Edmonds City Hall, 121 5th Ave N.

Contact: Mary Knackstedt, Program Manager, Education and Public Involvement, 360-725-5457 or [mknackstedt@psat.wa.gov](mailto:mknackstedt@psat.wa.gov)

See website: [http://www.psat.wa.gov/Programs/Pie\\_fund.htm](http://www.psat.wa.gov/Programs/Pie_fund.htm)

Contact:

Address:

Phone:

Fax:

E-Mail

URL:

Description:

#### Puget Sound Action Team

**Mary Knackstedt**

PO Box 40900

Olympia, WA, 98504-0900

360-407-7300

360-407-7333

<http://www.psat.wa.gov/>

The Puget Sound Action Team is a partnership of state agencies and tribal and local governments charged with developing and coordinating conservation programs to protect and restore Puget Sound.

## Environmental Education Funding Sources for the Pacific Northwest

### Resources for Global Sustainability, Inc.

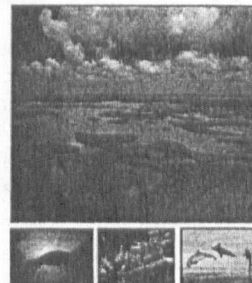
**Title:**

**Environmental Grantmaking Foundations Directory**

**Description:**

The 11th edition of the Environmental Grantmaking Foundations directory is at the printer. The publication was delayed due to the addition of 400 new foundations as well as new updates to existing foundation profiles. We will not publish a print or CD edition in 2006 due to the extended production phase of this 11th edition.

**ENVIRONMENTAL  
GRANTMAKING  
FOUNDATIONS**



11TH EDITION

**"a comprehensive list of foundations that  
support environmental nonprofit activities and  
programs"**

Website: <http://www.environmentalgrants.com/PublicationUpdate.htm>

**Contact:**

**Resources for Global Sustainability, Inc.**

**Address:**

P.O. Box 3665  
Cary, NC, 27519-3665

**Phone:**

800-724-1857

**Fax:**

919-363-9841

**E-Mail**

[rgs@environmentalgrants.com](mailto:rgs@environmentalgrants.com)

**URL:**

[www.environmentalgrants.com](http://www.environmentalgrants.com)

**Description:**

The Environmental Grantmaking Foundations directory is a comprehensive list of foundations that support environmental activities and programs.

## Environmental Education Funding Sources for the Pacific Northwest

### River Network

Title:

Watershed Assistance Grants (WAG)

Description:



River Network makes grants available to local watershed partnerships to support their organizational development and long-term effectiveness.

The purpose of the Watershed Assistance Grants (WAG) program is to support the growth and sustainability of local watershed partnerships in the United States. For the purpose of this grant program, a "watershed partnership" includes interested and affected parties in the identified watershed. This coalition of targeted stakeholders will serve to promote watershed protection and/or restoration by resolving identified watershed problems and issues.

**\*\*2004 UPDATE\*\***

(updated May 5, 2004)

*At this time, there is no secured funding for WAG. If and when funding does become available, we will post information here, on River Network's web page.*

See website for background, criteria, etc.

<http://www.rivernetwork.org/howwecanhelp/howwag.cfm#wag>

Contact:

River Network

Address:

See Website

520 SW 6th Avenue  
Portland, OR, 97204

Phone:

503-241-3506

Fax:

503-241-9256

E-Mail:

[info@rivernetwork.org](mailto:info@rivernetwork.org)

URL:

<http://www.rivernetwork.org>

Description:

A national, non-profit conservation organization dedicated to helping people understand, protect, and restore rivers and their watersheds.

## Environmental Education Funding Sources for the Pacific Northwest

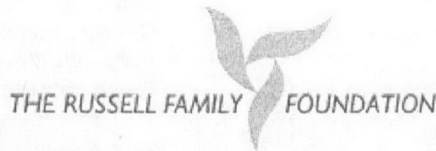
### The Russell Family Foundation

**Title:**

**Environmental Sustainability Grants**

**Description:**

The foundation is committed to improving protection of the environment in western Washington, with an emphasis on the waters of Puget Sound. The foundation focuses its grantmaking in this program on Puget Sound, Environmental Education and Green Business. For each topic of interest, the foundation has identified goals for the next five years.



The foundation works with its grantees and others to implement strategies that raise awareness and understanding of our environment and the importance of protecting it. Increased understanding will in turn lead to actions—individual, corporate, governmental, and societal—that will provide lasting and effective protection for the environment. We believe that the environment, economics, and social equity interact with one another to affect the achievement of these goals.

We support systemic and community-centered strategies that encourage collaboration across sectors and, where possible, leverage other support, build partnerships and reach new audiences. Though not a requirement for funding, we welcome projects that effectively address and connect several of our areas of interest.

We will judge our efforts by measuring how well we reach four goals:

The water quality of Puget Sound will improve and populations of the Sound's marine species will increase and be healthier.

The public, students and teachers, and business and community leaders in the Puget Sound region will reflect a better understanding of water quality issues, responsible stewardship and sustainable practices.

Consumers will increase their demand for and use of sustainable services and products. They will reduce their consumption of services and products that are not sustainable.

Businesses will increase their use and development of sustainable products, services and processes and reduce their use of those that are not sustainable.

See website for details: [http://www.trff.org/grant\\_programs/env\\_sustainability.asp](http://www.trff.org/grant_programs/env_sustainability.asp)

**Contact:**

**The Russell Family Foundation**

**Address:**

P.O. Box 2567  
Gig Harbor, WA, 98335

**Phone:**

253-858-5050

**Fax:**

253-851-0460

**E-Mail**

mailto:

**URL:**

<http://www.russellfamilyfdn.org/>

**Description:**

To protect, restore, and enhance the waters of the Greater Puget Sound



## Environmental Education Funding Sources for the Pacific Northwest

### Seattle Public Utilities

**Title:**

**Grant Central Station**

**Description:**

Get up to \$1,000 for your community environmental projects. You can apply any time for funding in either of these categories:

- Protect Water Quality
- Remove Litter and Graffiti

**Other grant resources:**

- City of Seattle Department of Neighborhoods
- King County Awards and Grants



Seattle Public Utilities provides grants to help build community environmental projects. Grants are provided to qualified community groups for projects within Seattle's city limits.

See website for details:

[http://www.ci.seattle.wa.us/util/Services/Drainage\\_&\\_Sewer/Get\\_Involved/Environmental\\_Grants/index.asp](http://www.ci.seattle.wa.us/util/Services/Drainage_&_Sewer/Get_Involved/Environmental_Grants/index.asp)

**Contact:**

**Seattle Public Utilities**

**Anthony Matlock**

**Address:**

710 2nd Ave., Suite 505

Seattle, WA, 98104-1709

**Phone:**

206-684-3000

**Fax:**

206-684-8529

**E-Mail**

**URL:**

<http://www.seattle.gov/>

**Description:**

City Agency for Water, Sewer, Garbage and Recycling Services

## Environmental Education Funding Sources for the Pacific Northwest

# SeaWorld/Busch Gardens/Fuji Film Environmental Excellence Awards

Title:

Seaworld/Busch Gardens/Fuji Film Environmental Excellence Awards

Description:



We're pleased to announce the 2007 SeaWorld/Busch Gardens/Fujifilm Environmental Excellence Awards.

Since 1993, the awards have recognized the outstanding efforts of students and teachers across the country who are working at the grassroots level to protect and preserve the environment. In fact, in the past decade, we've awarded \$1.4 million to more than 125 schools in 40 U.S. states/territories. In 2004, the awards program was expanded to include community groups who are protecting planet Earth. (Learn more in the FAQ section.)

See website for details: <http://www.seaworld.org/conservation-matters/eea/about.htm>

Contact:

SeaWorld/Busch Gardens/Fuji Film Environmental Excellence Awards

Address:

c/o SeaWorld Orlando, Education Department, 7007 SeaWorld Drive  
Orlando, FL, 32821  
407-363-2389

Phone:

Fax:

E-Mail

URL:

<http://www.seaworld.org/conservation-matters/eea/index.htm>

Description:

## **Environmental Education Funding Sources for the Pacific Northwest**

### **L.J. and Mary C. Skaggs Foundation**

**Title:** **Environment and Ecology Grants**

**Description:** ~ The Foundation supports programs to protect threatened areas and species, education programs (particularly directed towards youth), and support of collaborative organizations active in the field of ecological concerns.

Special Projects are grants made by the Board of Directors to projects of interest which do not fall within one of the regular program areas. The following are brief descriptions of existing 2005 grants- see website

[http://www.skaggs.org/grants/special\\_projects\\_2005.html](http://www.skaggs.org/grants/special_projects_2005.html)

See website: <http://www.skaggs.org/>

**Contact:** **L.J. and Mary C. Skaggs Foundation**

**Offices of the Foundation**

**Address:** 1221 Broadway, 21st Floor  
Oakland, CA, 94612-1837.

**Phone:** 510-451-3300

**Fax:** 510-451-1527

**E-Mail:** [skaggs@fablaw.com](mailto:skaggs@fablaw.com)

**URL:**

**Description:** The Foundation supports programs to protect threatened areas and species, education programs (particularly directed towards youth), and support of collaborative organizations active in the field of ecological concerns.



## Environmental Education Funding Sources for the Pacific Northwest

### Snohomish County PUD

**Title:** **Energy and Water Mini-Grants to Snohomish County K-12 Teachers**

**Description:** A Snohomish County PUD \$500 Mini-Grant could help your students...

- ◆ Explore circuits using buzzers and batteries or build a solar-powered car.
- ◆ Use a Van de Graaf generator or design and create an energy conservation calendar for the school.
- ◆ Design solar hot-air balloons or make a wind-powered generator.

If you have energy/water lessons that you would love to teach but school funding isn't available, then apply for a Snohomish County PUD Mini-Grant!

**Deadline: November 1, 2005**

See website:  
<http://www.snopud.com/Education/EducationalPrograms/Minigrants.ashx?p=2019>

**Contact:** **Snohomish County PUD**  
**Sarah Dinnis**

**Address:** 2320 California Street  
Everett, WA, 98201

**Phone:** 425-783-8292

**Fax:** 425-267-6399

**E-Mail:**

**URL:** <http://www.snopud.com>

**Description:** Snohomish County Public Utility District (PUD) is a municipal corporation of the state of Washington, formed by a majority vote of the people for the purpose of providing electric and/or water utility service.

## Environmental Education Funding Sources for the Pacific Northwest

---

### Social Justice Fund Northwest

Title:

Description:

#### Environmental Grants



#### ONE-YEAR GRANTS

Any organization that meets Social Justice Fund NW's basic eligibility criteria can apply for Basic, Technical Assistance, Rapid Response, and Cultural Grants.

Social Justice Fund NW's grants support activist, community-based organizations working to build a lasting movement for social, economic, and environmental justice in the Northwest United States. These grants are designed to address the root causes of social inequities, rather than alleviate the effects of these problems.

- **Basic Grants are \$7,500** for general operating or project support, awarded in the summer. Application begins with a proposal (download application forms) due on April 11, 2006. Contact: Scot Nakagawa, Grants and Program Manager (503) 267-0515 or [scot@socialjusticefund.org](mailto:scot@socialjusticefund.org).
- **Technical Assistance Grants are up to \$3,000** for projects that increase internal organizational skills and capacity. These grants do not fund general operating costs, and are awarded two times a year (download application forms). PLEASE NOTE: Social Justice Fund NW will no longer fund requests for TA funds to attend Western States Center's Community Strategic Training Initiative (CSTI) conference. We are now directly funding the Center to provide CSTI scholarships. Applications are due on Feb. 13, 2006 and Sept. 11, 2006. Contact Scot Nakagawa, Grants & Program Manager, at (503) 267-0515 or [scot@socialjusticefund.org](mailto:scot@socialjusticefund.org).

See website for more details: <http://www.atrfoundation.org/grants/Default.htm>

Contact:

Address:

Phone:

Fax:

E-Mail

URL:

Description:

#### Social Justice Fund Northwest

##### Scot Nakagawa

603 Stewart Street, Suite 1007

Seattle, WA, 98101-1228

206-624-4081

206-382-2640

[grants@socialjusticefund.org](mailto:grants@socialjusticefund.org)

<http://www.atrfoundation.org>

A Territory Resource (ATR) is a public foundation that supports activist, community-based organizations working for social, economic, and environmental justice across the Northwest in Washington, Oregon, Idaho, Montana and Wyoming.

## Environmental Education Funding Sources for the Pacific Northwest

### SOLV

**Title:**

**Description:**

**Middle & High School Resources - Make It Right**

Students at these grade levels are invited to initiate, design, and implement projects in their school or surrounding community that will:

- Clean or enhance their environment
- Respond to community problems
- Involve others - students and adults - in order to make a difference!

The Make It Right Planning Guide is a comprehensive service-learning tool and reference manual, filled with step-by-step worksheets, tips and sample materials to help students organize the project. Students also learn how to:

- Identify community needs
- Set goals
- Recruit volunteers
- Plan a media campaign and write a news release
- Develop a project budget, and seek funding



Reflection and evaluation tools are included, as well as a matrix demonstrating the program's alignment with the CIM and CAM career-related learning standards and benchmarks - all of the essential service-learning components.

**Grants Available**

Through Make It Right, SOLV will fund student projects with mini-grants of up to \$250 per project. A simple grant application form is included in the Planning Guide. Free supplies, including large and small litter bags, buttons, and bookmarks, are also available to students.

See website for details:

[http://www.solv.org/programs/education/education\\_MS\\_through\\_HS.asp](http://www.solv.org/programs/education/education_MS_through_HS.asp)

**Contact:**

**SOLV**

**Address:**

**Susan Abravanel**

P.O. Box 1235  
Hillsboro, OR, 97123

**Phone:**

503-844-9571

**Fax:**

503-844-9575

**E-Mail**

[webmaster@solv.org](mailto:webmaster@solv.org)

**URL:**

<http://www.solv.org>

**Description:**

SOLV is a non-profit organization that brings together government agencies, businesses and individual volunteers in programs and projects to enhance the livability of Oregon.

## Environmental Education Funding Sources for the Pacific Northwest Sustainable Seattle

**Title:**

**Youth Sustainability Education - Choose to Change Workshops**

**Description:**

"**Choose to Change**" is an educational workshop geared toward Middle- and High-School students, that combines waste reduction, consumption behavior, and sustainability education into a 1 or 2 day, hour long workshop. For more information on signing up your class, please email Brennon at [brennon@sustainableseattle.org](mailto:brennon@sustainableseattle.org).

High School Student opportunities:

- \$250 for a school or community project: Students who attend both days of the workshop qualify to apply for Sustainable Seattle's mini grant of up to \$250 to complete a project at their school or in their community based on the concepts students learn in the **Choose to Change** workshop. There is also staff assistance available for teachers needing help with project ideas or implementation of the project.

- Service Learning credit: Students who either attend the **Choose to Change** workshop and/or have an interest in mentoring elementary school students on the concepts of waste reduction, smart consumption, and sustainability can apply for Sustainable Seattle's service learning credit opportunity. For more details, contact Stacy Meyer at [ycats22@hotmail.com](mailto:ycats22@hotmail.com) or Deborah at [deborah@sustainableseattle.org](mailto:deborah@sustainableseattle.org).

See website: <http://www.sustainableseattle.org/Programs/SustainabilityEducation/>

**Contact:**

**Sustainable Seattle**

**Deborah**

**Address:**

1402 Third Avenue, Suite 1220  
Seattle, WA, 98101

**Phone:**

206-622-3522

**Fax:**

206-382-1046

**E-Mail**

[info@sustainableseattle.org](mailto:info@sustainableseattle.org)

**URL:**

<http://www.sustainableseattle.org/>

**Description:**

Founded in 1991, Sustainable Seattle is a non-profit organization dedicated to enhancing the long term quality of life in the Seattle / King County area.

## Environmental Education Funding Sources for the Pacific Northwest

### U.S. Fish & Wildlife

Title:

**U.S. Fish & Wildlife Grants-at-a-Glance**

Description:



**U.S. Fish & Wildlife Service**

#### Grants-At-A-Glance

The Fish and Wildlife Service administers a variety of natural resource assistance grants to governmental, public and private organizations, groups and individuals. Following, are links to information about and applications for available grants.

#### Natural Resource Assistance Grants are Available to:

- State Agencies
- Local Governments
- Indian Tribal Governments
- Conservation Organizations
- Private Individuals
- Foreign Entities
- Specialty Grants

#### For further assistance please follow links to Grants Programs:

- Federal Aid Grants
- North American Wetlands Conservation Act
- Neotropical Migratory Bird Conservation Act
- Coastal Wetlands Conservation Grants
- Endangered Species Grants
- International Affairs Grants

See website: <http://www.fws.gov/grants/>

Contact:

**U.S. Fish & Wildlife**

Address:

Phone:

Fax:

E-Mail

URL:

Description:

FW9\_Federal\_Aid@fws.gov

<http://www.fws.gov/>

The U.S. Fish and Wildlife Service's mission is, working with others, to conserve, protect and enhance fish, wildlife, and plants and their habitats for the continuing benefit of the American people.

## Environmental Education Funding Sources for the Pacific Northwest

### U.S. Fish & Wildlife, Alaska Coastal Program

**Title:**

**Alaska Coastal Conservation Grants Program**

**Description:**

Application packages must be postmarked, faxed, or e-mailed by 5PM February 15, 2006 for consideration in this funding cycle.



**Funding Opportunity Description**

The FWS Alaska Region Coastal Programs are soliciting proposals for cooperative coastal projects with an emphasis on the watersheds of Southcentral and Southeast Alaska. Projects may involve habitat protection, restoration, assessment, applied research, habitat-focused outreach education, or other work benefiting coastal ecosystems. Projects may not involve political advocacy or litigation. We will give priority to projects which best meet the Coastal Program's mission to protect, restore, and promote sustainable public stewardship of coastal ecosystems for the benefit of fish, wildlife, and people. The program seeks to catalyze broad, innovative conservation partnerships, with particular focus on conservation efforts for migratory birds, anadromous fish, those marine mammals and endangered species under management authority of the USFWS, and their habitats.

**Eligibility Information**

Eligible Applicants: Applications are encouraged from nonprofit organizations, public and private educational organizations, state, local, and tribal governments and organizations. Applications are not accepted from for-profit organizations.

As indicated in the application guidelines, Submit proposals and direct questions Southcentral and Southwestern Alaska projects to John DeLapp at (907) 271-1799 or [john\\_delapp@fws.gov](mailto:john_delapp@fws.gov).

Submit proposals and direct questions about Southeast Alaska project to: Neil Stichert. Neil can be reached at (907) 586-7482 or [neil\\_stichert@fws.gov](mailto:neil_stichert@fws.gov).

Pdf file: <http://alaska.fws.gov/fisheries/restoration/pdf/proposal.pdf>

Website: <http://alaska.fws.gov/fisheries/restoration/coastal.htm>

**Contact:**

**U.S. Fish & Wildlife, Alaska Coastal Program**

**Address:**

**John DeLapp Neil Stichert**  
605 West 4th Avenue, G-61  
Anchorage, AK, 99501

**Phone:**

907-271-1799

**Fax:**

907-271-2786

**E-Mail**

[john\\_delapp@fws.gov](mailto:john_delapp@fws.gov)

**URL:**

<http://alaska.fws.gov/es/coastal01.html>

**Description:**

The Region 7 Coastal Program works with state and federal agencies, Boroughs and municipalities, Alaska Natives, non-governmental organizations and private landowners to voluntarily conserve healthy coastal ecosystems for the benefit of fish, wildlife and people.

## Environmental Education Funding Sources for the Pacific Northwest Washington Department of Ecology

**Title:**

**Terry Husseman Sustainable Schools Awards**

**Description:**

The Sustainable Schools Awards program reflects our vision of a sustainable environment. We hope these awards will encourage Washington State public schools to continue having positive impact by embracing the concept of environmental sustainability.

If your school has been participating in resource conservation and sustainability, or is interested in participating then it could be eligible for an award from Ecology. The Terry Husseman Sustainable School Awards program (originally called the Outstanding Waste Reduction and Recycling Awards) has evolved in pace with changing policies and practices in both the public and the private sectors. The importance of waste reduction as a facet of a fully developed resource conservation or sustainability program continues to grow. This award program recognizes Washington State Public schools for their successes managing materials and wastes in a sustainable fashion. Ecology plans to distribute as much as \$20,000 among the winners in a particular year.

**Congratulations to the 22 schools selected for the 2005-06 Awards!**

Ecology appreciates your comments and suggestions for improving the guide and application packet. Submit your comments and suggestions electronically through our online comment form or by email to Michelle Payne at [mdav461@ecy.wa.gov](mailto:mdav461@ecy.wa.gov). Written comments may also be mailed to Michelle Payne, Dept. of Ecology, SWFA Program, PO Box 47600, Olympia, WA 98504-7600.

See website: <http://www.ecy.wa.gov/programs/swfa/terryhusseman.html>

**Contact:**

**Washington Department of Ecology**

**Michelle Payne**

**Address:**

PO Box 47600

Olympia, WA, 98504-7600

**Phone:**

360-407-6000

**Fax:**

360-407-6426

**E-Mail**

**URL:**

<http://www.ecy.wa.gov>

**Description:**

Promote, Preserve & Protect Wise Management of our Resources

## Environmental Education Funding Sources for the Pacific Northwest

# Washington Foundation for the Environment

**Title:** **Student Environmental Stewardship Award Program**

**Description:** WFFE hopes to encourage student participation in local environmental stewardship projects and enhance student understanding of community service and philanthropy. It is our objective to award up to four \$500 grants annually to support student initiated or supported environmental projects meeting local community needs. In years subsequent to this pilot program year, we intend to involve award recipients in selecting the following year recipients.

**The PROPOSAL DEADLINES are October 30 and March 30.** Please submit all proposals to PO Box 2123, Seattle, WA 98111 and [wickdufford@comcast.net](mailto:wickdufford@comcast.net). A WFFE committee will review all proposals. Please note that we intend to make the awards in person and would like, with your concurrence, to have the award presentation covered by the press.

See website: <http://www.wffe.org/StudentGrant.html>

**Contact:** **Washington Foundation for the Environment**

**Address:** P.O. Box 2123  
Seattle, WA, 98111

**Phone:**

**Fax:**

**E-Mail**

**URL:**

**Description:**

[info@wffe.org](mailto:info@wffe.org)

<http://grants@wffe.org/>

Supporting environmental education and innovative projects focused on environmental awareness.



## Environmental Education Funding Sources for the Pacific Northwest

### Washington Foundation for the Environment

**Title:** Washington Foundation for Environmental Education Grants

**Description:** Grant Application Guidelines

Our grants have ranged in size from \$200 to \$2000. We make grant decisions throughout the year at Board meetings that occur every six to eight weeks.

#### **Funding Goals**

WFFE is primary focus is on environmental education. We are interested in funding the following sorts of projects and organizations:

Educational efforts such as workshops, institutes, conferences, and exhibits, which hold the promise of increasing public awareness of, or stimulating productive public debate with respect to, significant environmental issues. Also considered are grants for individual and group scholarships to attend worthwhile conferences and educational programs;

Environmental projects which have one or more of the following features: (a) the project has come together in a way that is instructive, perhaps representing a significant success of grassroots efforts, or the assembly of an unlikely but necessary coalition; (b) the project could have a significant positive effect on public awareness of environmental issues or on the encouragement of other preservation or reclamation efforts; (c) the project will involve imaginative technical approaches that would make its success instructive; (d) the proposed uses of the project site and access to it will result in education about environmental matters.

For more details see website: <http://www.wffe.org/guidelines.html>

**Contact:** Washington Foundation for the Environment

**Address:** P.O. Box 2123  
Seattle, WA, 98111

**Phone:**

**Fax:**

**E-Mail** [info@wffe.org](mailto:info@wffe.org)

**URL:** <http://grants@wffe.org/>

**Description:** Supporting environmental education and innovative projects focused on environmental awareness.

## Environmental Education Funding Sources for the Pacific Northwest

### Washington Native Plant Society

Title:

**Washington Native Plant Society Education Grants**

Description:



**Washington Native Plant Society**

Appreciate, conserve and study our native plants and habitats

The Education Committee encourages educators throughout our state to develop projects about native plants and plant habitats for their classes. Teachers who have been granted awards can serve as mentors for other teachers hoping to do similar projects in their school districts. Education grants are also available for projects linked to gardens, museums, parks and other public displays of or about native plants.

#### **Project Proposal Guidelines**

Projects may be in the form of a permanent public display including plantings or labeling of native plants; an educational curriculum or museum display; a website or website-based educational program; posters, signs, brochures or presentations about invasive plants; or a teacher resource package that is suitable for reproduction and distribution. Most awards are granted in amounts up to \$500.

In accordance with current WNPS strategic plan focus areas; priority consideration will be given to projects relating to shrub-steppe or Garry oak plant communities, or to the effects of invasive exotic species on Washington native plants.

See website for specific details: <http://www.wnps.org/education/education.html>

Contact:

**Washington Native Plant Society**

**Fayla Schwartz**

Address:

7400 Sand Point Way NE

Phone:

Seattle, WA, 98115

Fax:

206-527-3210

E-Mail

<mailto:wnps@wnps.org>

URL:

<http://www.wnps.org>

Description:

The mission of the Washington Native Plant Society is to promote the appreciation and conservation of Washington's native plants and their habitats through study, education, and advocacy.

## Environmental Education Funding Sources for the Pacific Northwest

### Wilburforce Foundation

**Title:**

**Funding for Natural Habitat Protection**

**Description:**

#### Wilburforce Foundation Strategic Framework 2020

##### Our Vision

By 2020, a network of protected core reserves, corridors and buffer zones across Western North America will support ecologically effective landscapes and viable wildlife populations.

##### Our Funding Region

Wilburforce Foundation uses conservation science to identify specific priority regions in which it will fund. These regions correspond with our focus on habitat security, focal species and wildlife linkages. Please reference the map of our funding region that shows areas in which we have a funding interest.

For more detailed information about our work, please see our Strategic Framework.

##### Types of Support

Limitations

Process & Deadlines

Contacts

Strategic Framework

See website for more detailed information:

[http://www.wilburforce.org/grant\\_guidelines/strategic\\_framework.html](http://www.wilburforce.org/grant_guidelines/strategic_framework.html)

**Contact:**

**Wilburforce Foundation**

**Denise Joines**

**Address:**

3601 Fremont Ave N #304

Seattle, WA, 98103-8753

**Phone:**

206-632-2325

**Fax:**

206-632-2326

**E-Mail**

[grants@wilburforce.org](mailto:grants@wilburforce.org)

**URL:**

<http://www.wilburforce.org/>

**Description:**

Wilburforce Foundation is a private, philanthropic foundation that funds environmental issues in the Western U.S. and Western Canada.

## Environmental Education Funding Sources for the Pacific Northwest

### Wild Ones Natural Landscapers, Ltd.

**Title:**

**The Lorrie Otto Seeds for Education Grant Program**

**Description:**

Through our Seeds for Education Fund, we award grants for educational projects using native plants. In addition, we present talks at conferences and chapter meetings and provide a number of publications.

The Lorrie Otto Seeds for Education Grant Program gives small monetary grants to schools, nature centers, or other non-profit educational organizations for the purpose of establishing outdoor learning centers. The grant recipient learning centers are those which most successfully reflect the Wild Ones mission to educate and share information about the benefits of using native plants in our landscape and to promote biodiversity and environmentally sound environmental practices. Only through this knowledge, can we appreciate humankind's proper place in the web of life.



*To be considered for the annual award, non-profit groups such as schools, nature centers, houses of worship, or similar organizations must have applied by November 15th of the previous year.*

Website: <http://www.for-wild.org/seedmony.html>

**Contact:**

**Wild Ones Natural Landscapers, Ltd.**

**Address:**

P. O. Box 1274  
Appleton, WI, 54912-1274  
920-730-3986  
920-730-8654

**Phone:**

**Fax:**

**E-Mail**

**URL:**

<http://www.for-wild.org/>

**Description:**