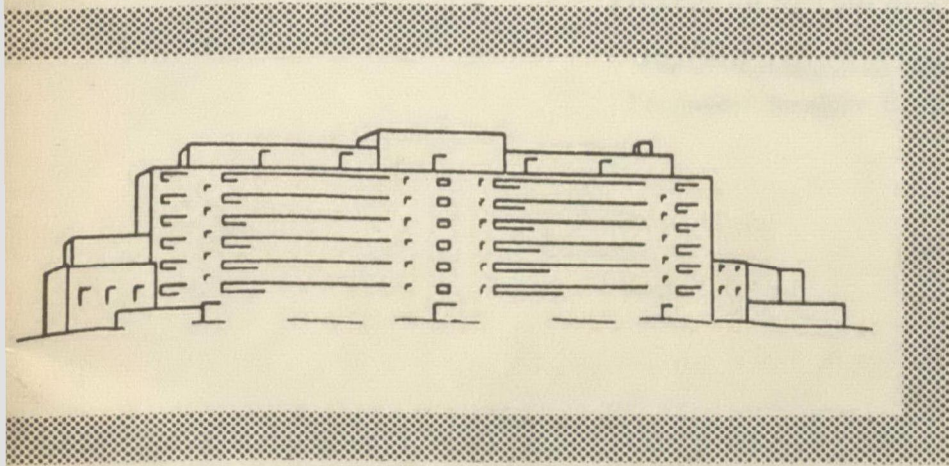


ESTUARINE AND MARINE POLLUTION

Selected Studies



The Robert A. Taft
Sanitary Engineering Center

TECHNICAL REPORT

W61-4

U. S. DEPARTMENT OF HEALTH,
EDUCATION, AND WELFARE
Public Health Service

ESTUARINE AND MARINE POLLUTION

Selected Studies

On biological, bacteriological, and physical aspects,
with major emphasis on the United States literature.

WILLIAM MARCUS INGRAM

THADDEUS A. WASTLER III

*Field Operations Section
Technical Services Branch*

**U. S. DEPARTMENT OF HEALTH, EDUCATION, AND WELFARE
Public Health Service
Division of Water Supply and Pollution Control**

**Robert A. Taft Sanitary Engineering Center
Cincinnati, Ohio**

1961

Preface

The references selected here will present an insight into the biological, bacteriological, and physical aspects relating to disposal of wastes into estuarine and marine waters. This bibliography was assembled to be used as a training aid for those concerned with the complexities of disposal of wastes into tidal waters. The majority of references cited are of United States or Canadian origin. Most are generally available in university libraries in this country.

Basic to relating the references to applied aspects of waste disposal in the marine environment is an acquaintance with oceanography. An encyclopedic publication on this subject that has proven over the years to be invaluable is the book, *The Oceans - Their Physics, Chemistry, and General Biology*, by Sverdrup, H. V., Johnson, M. W. and R. H. Fleming, Prentice-Hall Inc., New York, pp. 1-1087.

Engineers, scientists, and lay personnel are today greatly concerned with the potential adverse effects that pollutants may have on the marine environment. With municipal and industrial expansion involving the necessity and likelihood of disposal of greater amounts of wastes to estuarine and near-shore waters, never ceasing vigilance is required to maintain such waters in suitable condition for a variety of other uses. With estuaries, bays and near-shore waters serving as nursery areas for commercial and sports fish, workers in water pollution control should ever be aware of the subtle effects that pollution may have in adversely affecting fisheries in such areas. Bacterial pollution of shellfish beds by domestic sewage is well documented, as is similar pollution of bathing beaches. A relatively new concern to those working in environmental health is adequate monitoring of sea disposal areas for radioactive wastes of shore situated nuclear-powered reactors and of berthing areas of nuclear-powered vessels.

Any national oceanographic effort should concern itself with the near-coastal marine environment as well as with oceanographic studies of the deep seas. The inshore waters represent the fisheries "bread-basket" of this country, and nutrients are carried into them from fresh water streams and from land wash to be cycled into food chains which eventually go to support stable marine products that are served "on every table in the land." Also inshore areas, representing the rim of the sea, are those of greatest human water contact, being enjoyed for the fishing, boating, swimming, and water skiing that they afford. A prospectus that presents the national oceanographic interest for the next ten years, and which all who are concerned with the marine environment should read, is *Oceanography 1960 to 1970-1*. - "Introduction and Summary of Recommendations," National Academy of Sciences, National Research Council, 1959, pp. 1-33, Washington, D. C. Readers of this bibliography should explore very valuable reference material that is housed with the Recorder, Waterways Experiment Station, Corps of Engineers, U. S. Army, Vicks-

burg, Mississippi. In bibliographical material that has been issued from this station there are included references indexed to "Contamination."*

A few examples of potential investigations that could evolve a wiser use of the near-shore marine environment are suggested here. They can be readily related to the selected references in this bibliography, for they include the following:

- (1) Studies of the rates of biochemical reactions in sea water in relation to assimilative capacities for sewage and industrial wastes.
- (2) Bioassays of industrial wastes to determine their fate and toxicity in marine environments, as they may affect fin fish, shellfish, and destroy intermediate organisms in the food chain.
- (3) Studies of the effects on productivity of estuarine and inshore waters by fertilization with sewage and certain industrial wastes.
- (4) Investigations involving sedimentation rates under various conditions of water movement and bottom topography.
- (5) Studies of the incorporation of radioactive materials in sea water food chains.
- (6) Model and field studies relating to flushing of estuaries and diffusion patterns of wastes.

Acknowledgments

Gratitude is expressed to the following persons who participated in supplying references and who in various editorial ways gave of their time to further the completion of this bibliography: Dr. Michael Waldichuk, Biological Station, Nanaimo, B. C. and Dr. L. R. Day, and Messrs. J. Sprague and C. Medcof, Biological Station, St. Andrews, N. B., all of the Fisheries Research Board of Canada; Dr. Donald W. Pritchard, Director of the Chesapeake Bay Institute and Dr. C. H. Hull of the Department of Sanitary Engineering and Water Resources, both of The Johns Hopkins University; Dr. Herbert W. Graham and Dr. Paul Galtsoff of the Biological Laboratory, Woods Hole, Massachusetts, Bureau of Commercial Fisheries, U. S. Fish and Wildlife Service; Dr. Bostwick H. Ketchum, Woods Hole Oceanographic Institution; and Mr. Robert Hyde, Mr. Richard L. O'Connell and Mrs. Martha Jean Wilkey of the Sanitary Engineering Center, Cincinnati, Ohio. In addition, special credit is due Drs. Pritchard and Waldichuk, listed above, who made especially pertinent suggestions that have been incorporated into this document for its betterment.

* Anon., (Committee on Tidal Hydraulics), Corps of Engineers, U. S. Army: Committee on Tidal Hydraulics, Rept. No. 2, Feb. 1954, pp. 81-88; op. cit., Rept. No. 2, Supp. No. 1, June 1955, pp. 29-32; op. cit., Rept. No. 2, Supp. No. 2, May 1957, pp. 35-38; op. cit., Rept. No. 2, Supp. No. 3, May 1959, pp. 45-51.

Section 1
BIOLOGY

Section 1, Biology

Notes

- Alderdice, D. F., and J. R. Brett**
1957 Some effects of Kraft mill effluent on young Pacific salmon.
Jour. Fish. Res. Bd., Canada,
Vol. 14, No. 5, pp. 783-795.
- Alexander, W. B., Southgate, B. A., and R. Bassindale**
1935 The survey of the River Tees. Part II. The Estuary, chemical and biological.
Water Pollution Research Board,
Tech. Paper No. 5, pp. 1-168.
- Anon.**
1926 Oil pollution of navigable waters. Appendix 6, Report of the U.S. Bureau of Fisheries: Preliminary Investigation on Effect of Oil Pollution on Marine Pelagic Eggs.
April 1925, pp. 85-92.
- Anon.**
1931 Effect of Waste Pulp-Mill Liquor on the Oysters. Appendix 2, Fisheries Industries of the United States, 1930, in Report of the U.S. Commissioner of Fisheries, 1931,
pp. 616-617.
- Anon.**
1952 Report Upon the Extent, Effects and Limitations of Waste Disposal into San Diego Bay. San Diego Regional Water Control Bd., San Diego, California, pp. 1-95.
- Arnold, E. L., Jr., and W. F. Royce**
1950 Observations of the Effect of Acid-iron Waste Disposal at Sea on Animal Populations. Special Scientific Report: Fisheries No. 11, Fish and Wildlife Service, U.S. Department of Interior, pp. 1-12.
- Ayers, J. C.**
1955 Ocean Currents, Pollution -- and Fish. N. Y. State Conservationist, Vol. 9, No. 4,
pp. 2-3.
- Ayers, J. C.**
1956 Population Dynamics of the Marine Clam *Mya arenaria*. Limnology and Oceanography, Vol. 1, No. 1, pp. 26-34.
- Bassindale, R.**
1938 The Intertidal Fauna of the Mersey Estuary. Jour. Marine Biological Association, Vol 23, No. 1, pp. 83-98.

Notes

- Blegvad, H.**
1932 Investigations of the Bottom Fauna at Outfalls of Drains in the Sound. Report Danish Biological Station, Vol. 37, pp. 5-20.
- Boroughs, H., Chipman, W. A., and T. R. Rice**
1957 Laboratory Experiments on the Uptake, Accumulation, and Loss of Radionuclids by Marine Organisms. Chapter 8 in "The Effects of Atomic Radiation on Oceanography and Fisheries," Pub. No. 551, National Academy of Sciences, National Research Council, pp. 80-87.
- Bousfield, E. L.**
1955 Ecological Control of the Occurrence of Barnacles in the Miramichi Estuary. Nat. Mus. Can. Bull. No. 137, Biol. Series No. 46, pp. 1-69.
- Buller, R. J., and H. S. Spear**
1950 Survey of the Sport Fishery of the Middle Atlantic Bight in 1948. Special Scientific Report, Fisheries No. 7, Fish and Wildlife Service, U. S. Dept. of the Interior, pp 1-20.
- Burt, W. V., and J. Queen**
1957 Tidal Overmixing in Estuaries. Science, Vol. 126, No. 3280, pp. 973-974.
- Chanin, G., and P. Dempster**
1958 A Complex Chemical Waste and its Toxicity to Fish. Industrial Wastes, Vol 3, No. 6, pp. 155-158.
- Chipman, W. A.**
1948 Physiological Effects of Sulphate Pulp Mill Wastes on Shellfish. Paper Trade Journal, Vol. 127, No. 12, pp. 47-49.
- Chipman, W. A., and P. S. Galtsoff**
1949 Effects of Oil Mixed with Carbonized Sand on Aquatic Animals. Special Scientific Report - Fisheries, No. 1, Fish and Wildlife Service, pp. 1-52, Appendix 1, Figs. 1-25.
- Chipman, W. A.**
1958 Accumulation of Radioactive Materials by Fishery Organisms. Proc. 11th Annual Session, Gulf and Caribbean Fisheries Institute, pp. 97-110.
- Chipman, W. A., Rice, T. R., and T. J. Price**
1958 Uptake and Accumulation of Radioactive Zinc by Marine Plankton, Fish, and Shellfish. U. S. Fish and Wildlife Service, Fishery Bulletin No. 135, pp. 279-292.
- Chipman, W. A.**
1958 Biological Accumulation of Radioactive Materials. Proc. First Texas Conference on Uses of Atomic Energy, Special Publication of Agricultural and Mechanical College of Texas, College Station, Texas, pp. 36-41.

-
- Chipman, W. A.**
1959 Disposal of Radioactive Materials and its Relation to Fisheries. Proc. of National Shellfisheries Assoc., Vol 49, pp. 5-12.
- Chipman, W. A.**
1960 Accumulation of Radioactive Pollutants by Marine Organisms and its Relation to Fisheries. Biological Problems in Water Pollution - Transactions of the 1959 Seminar, Robert A. Taft San. Eng. Center, U. S. Public Health Service, Cincinnati, Ohio, pp. 8-14.
- Chipman, W. A.**
1960 Biological Aspects of Disposal of Radioactive Wastes in Marine Environments. Disposal of Radioactive Wastes, Vol. 2, Conference Proceedings, Monaco, November 16-21, 1959, pp. 3-15.
- Coffey, P. J. Slater, W. R., and C. A. McCullough**
1955 Water Quality and Waste Disposal. Appendix F of Report to the Water Project Authority of the State of Calif. on Feasibility of Construction by the State of Barriers in the San Francisco Bay System, Division of Water Resources, Dept. of Public Works, State of California, pp. 1-71.
- Collier, A., and S. M. Ray**
1948 An Automatic Proportioning Apparatus for Experimental Study of the Effects of Chemical Solutions on Aquatic Animals. Science, Vol. 107, No. 2787, pp. 576-577.
- Cumming, H. S., Purdy, W. C., and H. C. Ritter**
1916 Investigation of Pollution and Sanitary Conditions of the Potomac Watershed with Special Reference to Self Purification and Sanitary Condition of Shellfish in the Lower Potomac River. Bulletin 104, Hygienic Laboratory, U. S. Public Health Service, 239 pp.
- Daugherty, F. M., Jr.**
1951 A Proposed Toxicity Test for Industrial Wastes to be Discharged to Marine Waters. Sewage and Industrial Wastes, Vol. 23, No. 8, pp. 1029-1031.
- Daugherty, F. M., Jr.**
1951 Effects of Some Chemicals Used in Oil Well Drilling on Marine Animals. Sewage and Industrial Wastes, Vol 23, No. 10, pp. 1282-1287.
- Davis, C. C.**
1948 Studies of the Effects of Industrial Pollution in the Lower Patapasco River Area, 2: The Effect of Copperas Pollution on Plankton. Board of Natural Resources, Dept. of Research and Education, Chesapeake Biological Laboratory, Pub. No. 72, pp. 3-12.
- Edmondson, W. T., and Y. H. Edmondson**
1947 Measurements of Production in Fertilized Sea Water. Jour. Marine Research, Vol 6, pp. 228-246.

-
- Edmondson, W. T., Anderson, G. C., and D. R. Peterson**
1956 Artificial Eutrophication of Lake Washington. *Limnology and Oceanography*, Vol 1, No. 1, pp. 47-53.
- Ellis, M. M., Westfall, B. A., Meyer, D. K., and W. S. Platner**
1947 Water Quality Studies of the Delaware River with Reference to Shad Migration. Special Scientific Report No. 38, Fish and Wildlife Service, U. S. Dept. of the Interior, pp. 1-19. (27 tables)
- Eriksen, A., and L. D. Townsend**
1940 The Occurrence and Cause of Pollution in Grays Harbor. State Pollution Commission, State of Washington, Pollution Series Bulletin No. 2, pp. 1-100.
- Filice, F. P.**
1954 An Ecological Survey of the Castro Creek Area in San Pablo Bay. *The Wasmann Journal of Biology*, Vol 12, No. 1, pp. 1-24.
- Filice, F. P.**
1954 A Study of Some Factors Affecting the Bottom Fauna of a Portion of the San Francisco Bay Estuary. *The Wasmann Journal of Biology*, Vol. 12, No. 3, pp. 257-292.
- Filice, F. P.**
1958 Invertebrates from the Estuarine Portion of San Francisco Bay and Some Factors Influencing Their Distribution. *The Wasmann Journal of Biology*, Vol 16, No. 2, pp. 159-211.
- Filice, F. P.**
1959 The Effect of Wastes on the Distribution of Bottom Invertebrates in the San Francisco Bay Estuary. *The Wasmann Journal of Biology*, Vol. 17, No. 1, pp. 1-17.
- Fisher, L. M.**
1938 Effects of Industrial Wastes and Sewage on Shellfish and Fin Fish. *Civil Engineering*, Vol. 8, No. 7, pp. 454-456.
- Fisher, L. M.**
1939 Pollution Kills Fish. *Scientific American*, Vol. 160, No. 3, pp. 144-146.
- Galtsoff, P. S. Prytherch, H. F., et al.**
1935 Effects of Crude Oil Pollution on Oysters. Bulletin U. S. Bureau of Fisheries, Vol 48, pp. 142-210.
- Galtsoff, P. S.**
1936 Oil Pollution in Coastal Waters. Proceedings of the North American Wildlife Conference, Feb. 3-7, 1936, Senate Committee Print, 74th Congress, Second Session, pp. 550-555.

Galtsoff, P. S., Chipman, W. A., et al.

- 1938 Preliminary Report on the Decline of the Oyster Industry of the York River, Va., and the Effects of Pulp-Mill Pollution on Oysters. U.S. Bureau of Fisheries Investigational Report No. 37, Vol 2, pp. 1-42.

Galtsoff, P. S.

- 1946 Reaction of Oysters to Chlorination. Research Report No. 11, Fish and Wildlife Service, pp. 1-28.

Galtsoff, P. S., Chipman, W. A., et al.

- 1947 Ecological and Physiological Studies of the Effect of Sulfate Pulp Mill Wastes on Oysters in the York River, Virginia. U.S. Fish and Wildlife Service, Fishery Bulletin No. 43, pp. 59-180.

Galtsoff, P. S.

- 1960 Environmental Requirements of Oysters in Relation to Pollution. Biological Problems in Water Pollution - Transactions of the 1959 Seminar, Robert A. Taft Sanitary Engineering Center, U. S. Public Health Service, Cincinnati, Ohio, pp. 128-134.

Gowanloch, J. N.

- 1935 Pollution by Oil in Relation to Oysters. Transactions of the American Fisheries Society, Vol. 65, pp. 293-296.

Gunter, G.

- 1960 Pollution Problems Along the Gulf Coast. Biological Problems in Water Pollution - Transactions of the 1959 Seminar, Robert A. Taft Sanitary Engineering Center, U. S. Public Health Service, Cincinnati, Ohio, pp. 184-188.

Gunter, G., and J. McKee

- 1960 On Oysters and Sulfite Waste Liquor. A report for the Pollution Control Commission of the State of Washington, pp. 1-93.

Gutsell, J. S.

- 1921 Danger to Fisheries from Oil and Tar Pollution of Waters. Appendix VII, Report of U. S. Commissioner of Fisheries for 1921, pp. 3-10.

Hall, A. R.

- 1918 Some Experiments on the Resistance of Sea-urchin Eggs to Sulphurous Acid. Puget Sound Biological Station Publications, Vol. 2, pp. 113-120.

Hall, F. G.

- 1929 The Influence of Varying Oxygen Tensions Upon the Rate of Oxygen Consumption in Marine Fishes. The American Journal of Physiology, Vol. 88, pp. 212-218.

Hart, J. L.

- 1933 The Investigation of Pollution by Pilchard Reduction Plants. Fish. Res. Bd. Canada, Pacific Prog. Rept. No. 16, pp. 14-15.

Hart, J. L., Marshall, H. B., and D. Beall

- 1933 The Extent of the Pollution Caused by Pilchard Reduction Plants in British Columbia. Bull. Fish. Res. Bd. Canada, No. 39, 11 pp.

Hartman, O.

- 1956 Contributions to a Biological Survey of Santa Monica Bay, California. Final Report Submitted to Hyperion Engineers, Inc., by Geology Department, University of Southern California, 161 pp.

Haydu, E. P., Amberg, H. R., and R. E. Dimick

- 1952 The Effects of Kraft Mill Waste Components on Certain Salmonid Fishes of the Pacific Northwest. TAPPI, Vol. 35, No. 12, pp. 545-549.

Haydu, E. P., Amberg, H. R., and R. E. Dimick

- 1953 The Lethality of Methyl Mercaptan to King Salmon as Influenced by Variation of the Volume of Test Solution. TAPPI, Vol. 36, No. 3, pp. 131-133.

Herald, E. S., and D.A. Simpson

- 1955 Fluctuations in Abundance of Certain Fishes in South San Francisco Bay as Indicated by Sampling a Trash Screen. California Fish and Game, Vol. 41, No. 4, pp. 271-278.

Herrington, R. W., Jr., and W. L. Bidlingmayer

- 1958 Effects of Dieldrin on Fishes and Invertebrates of a Salt Marsh. Journal of Wildlife Management, Vol. 22, No. 1, pp. 76-82.

Higgins, E.

- 1939 Shellfish Investigations. Progress in Biological Inquiries 1938. Appendix I to Report of Commissioner of Fisheries for the Fiscal Year 1939, Administrative Report No. 35, U. S. Bureau of Fisheries, pp. 51-62.

Hood, D. W., Stevenson, B., and L. M. Jeffrey

- 1958 Deep Sea Disposal of Industrial Wastes. Industrial and Engineering Chemistry, Vol. 50, No. 6, pp. 885-888.

Hood, D. W., Duke, T. W., and B. Stevenson

- 1960 Measurement of Toxicity of Organic Wastes to Marine Organisms. Journal Water Pollution Control Federation, Vol. 32, No. 9, pp. 982-993.

Hopkins, A. E., Galtsoff, P. S., and H. C. McMillin

- 1931 Effects of Pulp Mill Pollution on Oysters. Bulletin of U. S. Bureau of Fisheries, Vol. 47, pp. 125-186.

-
- Hourston, A. S., and R. H. Herliveaux**
1957 A "Mass Mortality" of Fish in Alberni Harbor, British Columbia. Fisheries Research Board of Canada, Pacific Progress Report No. 109, pp. 3-6.
- Huntsman, A. G.**
1924 Circulation and Pollution of Water in and Near Halifax Harbour. Contributions to Canadian Biology, Vol. 2, pp. 69-79.
- Ingram, W. M., and P. Doudoroff**
1953 Selected Bibliography of Publications on Industrial Wastes Relating to Fish and Oysters. Public Health Service Publication No. 270, (Public Health Service Bibliography Series No. 10), pp. 1-28.
- Jackson, C. F.**
1944 A Biological Survey of Great Bay New Hampshire: No. 1, Physical and Biological Features of Great Bay and the Present Status of its Marine Resources. New Hampshire Marine Fisheries Commission, pp. 1-61.
- Ketchum, B. H.**
1957 The Effects of the Ecological System on the Transport of Elements in the Sea. National Academy of Sciences - National Research Council, Publication No. 551, pp. 52-59.
- Ketchum, B. H.**
1960 Marine Pollution Problems in the North Atlantic Area. Biological Problems in Water Pollution - Transactions of the 1959 Seminar, Robert A. Taft Sanitary Engineering Center, U. S. Public Health Service, Cincinnati, Ohio, pp. 212-217.
- Ketchum, B. H.**
1960 Oceanographic Research Required in Support of Radioactive Waste Disposal. Disposal of Radioactive Wastes, Vol. 2, Conference Proceedings, Monaco, November 16-21, 1959, pp. 283-291.
- Lane, F. W., Bauer, A. D., et al.**
1924 Effect of Oil Pollution of Coast and Other Waters on the Public Health. Public Health Reports, Vol. 39, pp. 1657-1664.
- Lane, F. W., Bauer, A. D., et al.**
1925 Effect of Oil Pollution on Marine and Wildlife. Appendix 5 to Report of the U. S. Commissioner of Fisheries for 1925, Bureau of Fisheries Document No. 995, pp. 171-181.
- Liebman, E.**
1939 River Discharges and Their Effect on the Cycles and Productivity of the Sea. Proc. of the Sixth Pacific Science Congress, Vol. 3, pp. 517-523

Lindsay, C. E.

- 1960 The Bio-assay Approach to Estuarine Pollution Problems. Jour. Federation Water Poll. Control, Vol. 32, No. 2, pp. 195-197.

McKernan, D. L., Tartar, V., and R. Tollefson

- 1949 An Investigation of the Decline of the Native Oyster Industry of the State of Washington, With Special Reference to the Effects of Sulfite Pulp Mill Waste on the Olympia Oyster (*Ostrea lurida*). State of Washington Department of Fisheries Biological Report No. 49a, pp. 115-165.

McNulty, J. K., Reynolds, E. S., and S. M. Miller

- 1960 Ecological Effects of Sewage Pollution in Biscayne Bay, Florida: Distribution of Coliform Bacteria, Chemical Nutrients, and Volumes of Zooplankton. Biological Problems in Water Pollution - Transactions of the 1959 Seminar, Robert A. Taft Sanitary Engineering Center, U. S. Public Health Service, Cincinnati, Ohio, pp. 189-202.

Miller, H. E., and I. Nusbaum

- 1952 Oxygen Resources of San Diego Bay Appendix III (pp. 81-94). In: Report Upon the Extent, Effects and Limitations of Wastes Disposal into San Diego Bay - 1951, San Diego. Regional Water Pollution Control Bd., San Diego, California, pp. 1-95.

Nelson, T. C.

- 1921 Some Aspects of Pollution as Affecting Oyster Propagation. American Journal of Public Health, Vol 11, pp. 498-501.

Nelson, T. C.

- 1960 Some Aspects of Pollution, Parasitism, and Inlet Restriction in Three New Jersey Estuaries. Biological Problems in Water Pollution - Transactions of the 1959 Seminar, Robert A. Taft Sanitary Engineering Center, U. S. Public Health Service, Cincinnati, Ohio, pp. 203-211.

North, W. J.

- 1959 Studies of the Influence Which Water Clarity May Have on the Giant Kelp *Macrocystis pyrifera* and its Associated Organisms. International Oceanographic Congress (Preprints), American Association for the Advancement of Science, pp. 347-348.

Olson, R. A., Brust, H. F., and W. L. Tressler

- 1941 Studies of the Effects of Industrial Pollution in the Lower Patapsco River Area, 1: Curtis Bay Region, 1941. Board of Natural Resources, State of Maryland Dept. of Research and Education, Chesapeake Biological Laboratory, Pub. No. 43, pp. 1-40.

Paul, R. M.

- 1951 San Diego Bay Water Pollution Survey, Appendix II (pp. 67-80). Project No. 52-9-1 Dept. of Fish and Game in: Report Upon the Extent, Effects and Limitations of Waste Disposal Into San Diego Bay - 1951, San Diego Regional Water Poll. Control Bd., San Diego, California, pp. 1-95.

Pearson, E. A.

- 1958 "Reduced Area" Investigations of San Francisco Bay. E. A. Pearson, Consulting Engineer, Berkeley, California, for the State (California) Water Pollution Control Board, Standard Service Agreement No. 12D-18, pp. 1-328.

Pearson, E. A., Pomeroy, R. D., and J. E. McKee

- 1960 Summary of Marine Waste Disposal Research Program in California. California State Water Pollution Control Board, Publication No. 22, pp. 1-77.

Pelgen, D. E.

- 1955 The Effect of a San Francisco Salinity Control Barrier on Fisheries and Wildlife. Fish and Wildlife Appendix C of Report to the Water Project Authority of the State of California on Feasibility of Construction by the State of Barriers in the San Francisco Bay System, Division of Water Resources, Dept. of Public Works, State of California, pp. 1-53.

Perlmutter, A.

- 1959 Our Changing Shoreline. New York State Conservationist (Oct.-Nov. 1959), pp. 12-15.

Pritchard, D. W.

- 1960 Problems Related to Disposal of Radioactive Wastes in Estuarine and Coastal Waters. Biological Problems in Water Pollution - Transactions of the 1959 Seminar, Robert A. Taft Sanitary Engineering Center, U. S. Public Health Service, Cincinnati, Ohio, pp. 22-32.

Redfield, A. C., and L. A. Walford

- 1951 A Study of the Disposal of Chemical Wastes at Sea. National Academy of Sciences - National Research Council, Washington, D.C., Publication 201, pp. 1-49.

Reish, D. J., and H. A. Winter

- 1954 The Ecology of Alamitos Bay, California, with Special Reference to Pollution. California Fish and Game, Vol. 40, No. 2, pp. 105-121.

Reish, D. J.

- 1955 The Relation of Polychaetous Annelids to Harbor Pollution. Public Health Reports, U. S. Department of Health, Education, and Welfare, Vol. 70, No. 12, pp. 1168-1174.

Reish, D.J.
1956 An Ecological Study of Lower San Gabriel River, California, with Special Reference to Pollution. California Fish and Game, Vol. 42, No. 1, pp. 51-61.

Reish, D.J.
1957 The Relationship of the Polychaetous Annelid *Capitella capitata* (Fabricius) to Waste Discharges of Biological Origin. Biological Problems in Water Pollution, Robert A. Taft Sanitary Engineering Center, U.S. Public Health Service, Cincinnati, Ohio, pp. 195-200.

Reish, D.J.
1959 An Ecological Study of Pollution in Los Angeles - Long Beach Harbors, California. Allan Hancock Foundation Publications, Occasional Paper No. 22, pp. 1-19.

Reish, D.J., and J.L. Barnard
1960 Field Toxicity Tests in Marine Waters Utilizing the Polychaetous Annelid, *Capitella capitata* (Fabricius). Pacific Naturalist, Vol. 1, No. 21, pp. 1-8.

Resig, J.M.
1959 Microbiology of the Mainland Shelf of Southern California. Section VI (Foraminifera and Plankton) in: Oceanographic Survey of the Continental Shelf Area of Southern California, Publication No. 20, State Water Control Board, Sacramento, California, pp. 431-560.

Revelle, R., and M.B. Schaefer
1957 General Considerations Concerning the Ocean as a Receptacle for Artificially Radioactive Materials. National Academy of Sciences - National Research Council, Publication No. 551, pp. 1-25.

Rice, T.R., and V.M. Willis
1959 Uptake, Accumulation and Loss of Radioactive Cerium-144 by Marine Planktonic Algae. Limnology and Oceanography, Vol. 4, No. 3, pp. 277-290.

Ryther, J.H.
1954 The Ecology of Phytoplankton Blooms in Moriches Bay and Great South Bay, Long Island, New York. Biological Bulletin, Vol. 106, No. 2, pp. 198-209.

Ryther, J.H., Yentsch, C.S., Hulburt, E.M., and R.F. Vaccaro
1958 The Dynamics of a Diatom Bloom. Biol. Bull., Vol. 115, No. 2, pp. 257-268.

-
- Schaefer, M. B.**
1960 New Research Required in Support of Radioactive Waste Disposal. Disposal of Radioactive Wastes, Vol. 2, Conference Proceedings, Monaco, November 16-21, 1959, pp. 265-282.
- Springer, P. F., and J. R. Webster**
1951 Biological Effects of DDT Application on Tidal Salt Marshes. Sixteenth North American Wildlife Conference, pp. 383-397.
- Springer, P. F., and J. R. Webster**
1951 Biological Effects of DDT Application on Tidal Salt Marshes. Mosquito News, Vol. 11, No. 2, pp. 67-74.
- Springer, P. F., and J. R. Webster**
1951 Effects of DDT on Saltmarsh Wildlife: 1949. Fish and Wildlife Service, Special Scientific Report, Wildlife No. 10, pp. 1-24.
- Stevenson, R. E., and J. R. Grady**
1956 Plankton and Associated Nutrients in the Waters Surrounding Three Sewer Outfalls in Southern California. University of Southern California, Allan Hancock Foundation Report, 48 pp.
- Tiller, R. E., and E. N. Cory**
1947 Effects of DDT on Some Tidewater Aquatic Animals. Jour. Economic Entomology, Vol. 40, No. 3, pp. 431-433.
- Waldichuk, M.**
1960 Containment of Radioactive Waste for Sea Disposal and Fisheries off the Canadian Pacific Coast. Disposal of Radioactive Wastes, Vol. 2, Conference Proceedings, Monaco, November 16-21, 1959, pp. 57-77.
- Williams, R. W., Mains, E. M., Eldridge, W. E., and J. E. Lassiter (Edited by G. A. Holland)**
1953 Toxic Effects of Sulfite Waste Liquor on Young Salmon. State of Washington, Department of Fisheries Research Bulletin No. 1, 111 pp.
- Wise, R. I., Winston, J. W., and G. Cull**
1948 Factors of Sewage Pollution of Oyster Beds in Galveston Bay. American Jour. of Public Health, Vol. 38, pp. 1109-1117.
- ZoBell, C. E.**
1960 Marine Pollution Problems in Southern California. Biological Problems in Water Pollution - Transactions of the 1959 Seminar, Robert A. Taft Sanitary Engineering Center, U. S. Public Health Service, Cincinnati, Ohio, pp. 177-183.

Section 2
BACTERIOLOGY

Section 2, Bacteriology

Notes

- Beard, P. J., and N. F. Meadowcroft**
1935 Survival and Rate of Death of Intestinal Bacteria in Sea Water. American Journal Public Health, Vol. 25, pp. 1023-1026.
- Belt, E.**
1943 Sanitary Survey of Sewage Pollution of Santa Monica Bay. Western City, Vol. 19, No. 6, pp. 17-22.
- Buck, T. C., Jr., Keefer, C. E., and H. Hatch**
1952 Viability of Coliform Organisms in Estuary Waters. Sewage and Industrial Wastes, Vol. 24, No. 6, pp. 777-784.
- Buck, J. D., and R. C. Cleverdon**
1960 The Spread Plate as a Method for the Enumeration of Marine Bacteria. Limnology and Oceanography, Vol. 5, No. 1, pp. 78-80.
- Burke, V., and L. A. Baird**
1931 Fate of Fresh Water Bacteria in the Sea. Jour. of Bacteriology, Vol. 21, No. 4, pp. 287-298.
- Carlucci, A. F., and D. Pramer**
1959 Microbiological Process Report. Factors Affecting Survival of Bacteria in Sea Water. Applied Microbiology, Vol. 7, No. 6, pp. 388-392.
- Erdman, J. E., and A. D. Lennont**
1956 The Self-Cleansing of Soft-Shell Clams; Bacteriological and Public Health Aspects. Canadian Journal of Public Health, Vol. 47, No. 5, pp. 196-202.
- Feldman, G., and C. Winslow**
1941 The Influence of Sewage Treatment Upon the Bacterial Pollution of New Haven Harbor. American Jour. of Hygiene, Vol. 34, pp. 91-101.
- Fisher, L. M., and J. E. Acker**
1935 Bacteriological Examination of Oysters and Water from Narragansett Bay. Sewage Works Journal, Vol. 7, No. 1, pp. 727-741.
- Garber, W. F.**
1956 Bacteriological Standards for Bathing Waters. Sewage and Industrial Wastes, Vol. 28, No. 6, pp. 795-808.

Notes

- Gotaas, H. G.**
1949 The Effects of Sea Water on the Biochemical Oxidation of Sewage. Sewage Works Journal, Vol. 21, pp. 818-839.
- Greenberg, A. E.**
1956 Survival of Enteric Organisms in Sea Water. Public Health Reports, Vol. 71, pp. 77-86.
- Greer, B. A., Gillespie, R. E., and P. C. Trussell**
1956 Biochemical Oxygen Demand of Total Effluent from Full-Bleach Kraft Mill. TAPPI, Vol. 39, No. 8, pp. 599-602.
- Gunnerson, C. G.**
1958 Sewage Disposal in Santa Monica Bay, California. Jour. San. Engr. Div.- Proc. Amer. Soc. Civil Eng., Vol 84 No. SA-1, Paper 1534, pp. 1-28.
- Harris, E. K.**
1958 On the Probability of Survival of Bacteria in Sea Water. Biometrics, Vol. 14, pp. 195-206.
- Henderson, W. L.**
1959 Studies on the Use of Membrane Filters for the Estimation of Coliform Densities in Sea Water. Sewage and Industrial Wastes, Vol. 31, No. 1, pp. 78-91.
- Jannasch, H. W., and G. E. Jones**
1959 Bacterial Populations in Sea Water as Determined by Different Methods of Enumeration. Limnology and Oceanography. Vol. 4, No. 2, pp. 128-139.
- Kelley, C. B., and W. Arcisz**
1954 Survival of Enteric Organisms in Shellfish. Public Health Reports, Vol. 69, pp. 1205-1210.
- Ketchum, B. H., Carey, C. L., and M. P. Briggs**
1949 Preliminary Studies on the Viability and Dispersal of Coliform Bacteria in the Sea. In: American Association Advancement of Science: "Limnological Aspects of Water Supply and Waste Disposal," pp. 64-73.
- Ketchum, B. H., Ayers, J. C., and R. F. Vaccaro**
1952 Processes Contributing to the Decrease of Coliform Bacteria in a Tidal Estuary. Ecology, Vol. 33, pp. 247-258.
- Ketchum, B. H.**
1955 Distribution of Coliform Bacteria and Other Pollutants in Tidal Estuaries. Sewage and Industrial Wastes, Vol. 27, No. 11, pp. 1288-1296.
- Knowlton, W. T.**
1929 Bacillus Coli Surveys, Los Angeles Ocean Outfall. California Sewage Works Jour., Vol. 2, pp. 150-152.

-
- McNulty, J. K., Reynolds, E. S., and S. M. Miller**
1960 Ecological Effects of Sewage Pollution in Biscayne Bay, Florida: Distribution of Coliform Bacteria, Chemical Nutrients, and Volumes of Zooplankton. Biological Problems in Water Pollution - Robert A. Taft Sanitary Engineering Center, U. S. Public Health Service, Cincinnati, Ohio, pp. 189-202.
- Moore, B.**
1954 Sewage Contamination of Coastal Bathing Beaches. Bull. Hygiene, Vol. 29, pp. 689-704.
- Nusbaum, I., and R. M. Garver**
1955 Survival of Coliform Organisms in Pacific Ocean Coastal Waters. Sewage and Industrial Wastes, Vol. 27, No. 12, pp. 1383-1390.
- Orlob, G. T.**
1956 Viability of Sewage Bacteria in Sea Water. Sewage and Industrial Wastes, Vol. 28, No. 9, pp. 1147-1167.
- Orlob, G. T.**
1956 Evaluating Bacterial Contamination in Sea Water Samples. Public Health Reports, Vol. 71, pp. 1246-1252.
- Pearson, E. A., Pomeroy, R. D., and J. E. McKee**
1960 Summary of Marine Waste Disposal Research Program in California. California State Water Pollution Control Board, Publication No. 22, pp. 1-77.
- Presnell, M. W., Arcisz, W., and C. B. Kelley**
1954 Comparison of the Membrane Filter and Most Probable Number Techniques in Examining Sea Water. Public Health Reports, Vol. 69, pp. 300-304.
- Rittenberg, S. C., Mittwer, T., and D. Ivler**
1958 Coliform Bacteria in Sediments Around Three Marine Sewage Outfalls. Limnology and Oceanography, Vol. 3, pp. 101-108.
- Romer, H.**
1956 The Health Departments Role in New York Harbor Pollution Control. Sewage and Industrial Wastes, Vol. 28, No. 12, pp. 1495-1503.
- Vaccaro, R. F., Briggs, M. O., Carey, C. L., and B. H. Ketchum**
1950 Viability of *Escherichia coli* in Sea Water. American Journal Public Health, Vol. 40, pp. 1257-1266.
- Waksman, S. A., and C. L. Carey**
1935 Decomposition of Organic Matter in Sea Water by Bacteria. Jour. of Bacteriology, Vol. 29, pp. 531-561.

Waksman, S. A., and M. Hotchkiss

1937 Viability of Bacteria in Sea Water. *Jour. of Bacteriology*, Vol. 33, pp. 389-400.

Weiss, C. M.

1951 Adsorption of *E. coli* on River and Estuarine Silts. *Sewage and Industrial Wastes*, Vol. 23, No. 2, pp. 227-237.

Wilson, T. E., and C. S. McCleskey

1951 Indices of Pollution in Oysters. *Food Research*, Vol. 16, pp. 313-319.

Winslow, C., and D. Moxon

1928 Bacterial Pollution of Bathing Beach Waters in New Haven Harbor. *Amer. Jour. of Hygiene*, Vol. 8, pp. 299-310.

ZoBell, C. E.

1941 The Occurrence of Coliform Bacteria in Oceanic Water. *Jour. of Bacteriology*, Vol. 42, No. 2, page 284.

ZoBell, C. E.

1946 Marine Microbiology. *Chronica Botanica*, Co., Waltham, Mass., 240 pp.

ZoBell, C. E.

1960 Marine Pollution Problems in the Southern California Area. *Biological Problems in Water Pollution—Transactions of the 1959 Seminar*, Robert A. Taft Sanitary Engineering Center, U. S. Public Health Service, Cincinnati, Ohio, pp. 177-183.

Section 3

PHYSICAL

Section 3, Physical

Notes

Aldrich, L., and H. G. Smith

1948 Los Angeles' \$41,000,000 Hyperion Project Ends Beach Contamination. *Civil Engineering*, Vol. 18, pp. 18-23; 80.

Allen, K.

1929 Sewage Discharge from Submerged Outlets. *Water Works and Sewerage*, Vol. 74, pp. 497-499.

Allin, J. H.

1944 Constructing Pasadena's Outfall Sewer. *Public Works*, Vol. 75, No. 12, pp. 14-16.

Arons, A. B., and H. Stommel

1951 A Mixing-Length Theory of Tidal Flushing. *Trans. Amer. Geophysical Union*, Vol. 32, No. 3, pp. 419-421.

Ayers, J. C.

1959 The Hydrography of Barnstable Harbor, Mass. *Limnology and Oceanography*, Vol. 4, No. 4, pp. 211-225.

Barlow, J. P.

1955 Physical and Biological Processes Determining the Distribution of Zooplankton in a Tidal Estuary. *Biological Bulletin*, Vol. 109, No. 2, pp. 211-225.

Barlow, J. P.

1956 Effect of Wind on Salinity Distribution. *Jour. Marine Research*, Vol. 15, No. 3, pp. 193-203.

Batchelor, G. K. (Editor)

1960 *The Scientific Papers of Sir Geoffrey Ingram Taylor. Vol. II, Meteorology, Oceanography and Turbulent Flow.* Cambridge University Press, London, England, pp. 1-515.

Bousfield, E. L.

1955 Some Physical Features of the Miramichi Estuary. *J. Fish. Res. Bd. Canada*, Vol. 12, No. 3, pp. 342-361.

Burt, W. V., and L. D. Marriage

1957 Computation of Pollution in the Yaquina River Estuary. *Sewage and Industrial Wastes*, Vol. 29, No. 12, pp. 1385-1389.

Notes

Carritt, D. E.

- 1956 Recent Developments in the Chemistry and Hydrography of Estuaries. Trans. 21st North Amer. Wildlife Conference, Pub. by Wildlife Management Institute, Wire Bldg., Washington 5, D. C.

Carritt, D. E.

- 1960 Disposal into the Sea and into Geological Structures of Wastes Resulting from the Peaceful Uses of Atomic Energy. Disposal of Radioactive Wastes, Vol. 2, Conference Proceedings, Monaco, November 16-21, 1959, pp. 259-264.

- Diachishin, A. N., Hess, S. G., and W. T. Ingram**
1953 Sewage Disposal in Tidal Estuaries. Amer. Society Civil Engineers, Proc. Vol. 79, Separate No. 167, pp. 1-14.

Eberman, J. W.

- 1956 Disposal of Wastes at Sea. Sewage and Industrial Wastes, Vol. 28, No. 11, pp. 1365-1370.

Eldridge, E. F., and G. T. Orlob

- 1951 Investigation of Pollution of Port Gardner Bay and Snohomish River Estuary. Sewage and Industrial Wastes, Vol. 23, No. 6, pp. 782-795.

Eldridge, E. F., and R. O. Sylvester

- 1957 Silver Bay Water Pollution Control Studies Near Setka, Alaska. Alaska Water Pollution Control Board, Report No. 10, 121 pp.

Gameson, A. L. H., Hall, H., and W. S. Freddy

- 1957 Effects of Heated Discharges on the Temperature of the Thames Estuary. The Engineer, Dec. 6, 13 and 20, 1957, pp. 3-12, Water Poll. Research Lab. Reprint No. 318.

Gardner, J. R.

- 1945 Submarine Pipe Lines in Deep Water at Portland, Maine. Jour. New England Water Works Assoc., Vol. 59, No. 2, pp. 148-162.

Garland, C. F.

- 1950 Pollution Studies in Baltimore Harbor. Proc. 23rd Annual Conference, The Maryland-Delaware Water and Sewerage Association, pp. 29-41.

Glover, R. E.

- 1955 A New Method for Predicting Transient States of Salinity Intrusion Into the Sacramento-San Joaquin Delta. Trans. Amer. Geophysical Union, Vol. 36, No. 4, pp. 641-648.

Gould, R. H.

- 1922 The Area of Water Surface as a Controlling Factor in the Condition of Polluted Harbor Waters. *Trans. Amer. Soc. Civil Engineers*, Vol. 85, Paper No. 1492, pp. 699-712.

Heaney, F. L.

- 1960 Design, Construction, and Operation of Sewer Outfalls in Estuarine and Tidal Waters. *Jour. Water Poll. Control Federation*, Vol. 32, No. 6, pp. 610-621.

Helen, R. R.

- 1955 Outfall Runs 7,000 Feet Into Pacific. *Civil Engineering*, Vol. 25, pp. 137-140.

Hicks, S. D.

- 1959 Physical Oceanography of Narragansett Bay. *Limnology and Oceanography*, Vol. 4, No. 3, pp. 316-327.

Hood, D. W.

- 1958 Waste Disposal in Marine Waters. *Proceedings, Sixth Conference on Coastal Engineering, Florida, December 1957*, pp. 607-624.

Hood, D. W., Stevenson, B., and L. M. Jeffrey

- 1958 Deep Sea Disposal of Industrial Wastes. *Industrial and Engineering Chemistry*, Vol. 50, No. 6, pp. 885-888.

Hughes, P.

- 1958 Tidal Mixing in the Narrows of the Mersey Estuary. *Geophysical Jour. of Roy. Astronomical Soc.*, Vol. 1, No. 4, pp. 271-283.

Imus, E. O.

- 1937 Ocean Outfall Sewer Constructed by the City of Oxnard. *Public Works*, Vol. 68, No. 10, pp. 23-24.

Johnson, J. W., and R. L. Wiegel

- 1959 Investigation of Current Measurement in Estuarine and Coastal Waters. *California State Water Pollution Control Board, Sacramento, California*, pp. 1-233.

Kaplovsky, J. A.

- 1957 Estuarine Pollution Investigation Employing "Same-Slack" Technique. *Sewage and Industrial Wastes*, Vol. 29, No. 9, pp. 1042-1053.

Kennedy, R. C.

- 1953 Sewage Disposal Project Cleans Up San Francisco Bay. *Civil Engineering*, Vol. 23, No. 6, pp. 46-49.

Kennison, K. R.

- 1946 Disposal Plant to Alleviate Boston Harbor Nuisance - Pt. II, Problem of Solids Disposal Solved. *Civil Engineering*, Vol. 16, No. 7, pp. 304-307.

Kent, R.

- 1960 Diffusion in a Homogenous Estuary. *Journal Sanitary Engineering Division, Proc. of the American Society of Civil Engineers*, Vol. 86, No. SA-2, pp. 15-47.

Kersnar, F. J., and D. H. Caldwell

- 1953 Ocean Outfall Studies at San Diego. *Sewage and Industrial Wastes*, Vol. 25, No. 11, pp. 1336-1343.

Ketchum, B. H.

- 1950 Hydrographic Factors Involved in the Dispersion of Pollutants Introduced Into Tidal Waters. *Jour. Boston Society Civil Engineers*, Vol. 37, No. 3, pp. 296-314.

Ketchum, B. H.

- 1951 The Exchanges of Fresh and Salt Waters in Tidal Estuaries. *Jour. Marine Research*, Vol. 10, No. 1, pp. 18-38.

Ketchum, B. H.

- 1951 The Flushing of Tidal Estuaries. *Sewage and Industrial Wastes*, Vol. 23, No. 2, pp. 198-209.

Ketchum, B. H., and W. L. Ford

- 1952 Rate of Dispersion in the Wake of a Barge at Sea. *Trans. Amer. Geophysical Union*, Vol. 33, No. 5, pp. 680-684.

Ketchum, B. H., and D. J. Keen

- 1953 The Exchanges of Fresh and Salt Waters in the Bay of Fundy and in Passamoguddy Bay. *Jour. Fisheries Research Board of Canada*, Vol. 10, No. 3, pp. 97-124.

Ketchum, B. H.

- 1954 Relation Between Circulation and Planktonic Populations in Estuaries. *Ecology*, Vol. 35, No. 2, pp. 191-200.

Ketchum, B. H.

- 1955 Distribution of Coliform Bacteria and Other Pollutants in Tidal Estuaries. *Sewage and Industrial Wastes*, Vol. 27, No. 11, pp. 1288-1296.

Knowlton, W. T.

- 1928 The Sewage Disposal Problem of Los Angeles, California. *Trans. Amer. Society Civil Engineers*, Vol. 92, Paper No. 1877, pp. 984-994.

Koczy, F. F.

- 1960 The Distribution of Elements in the Sea. Disposal of Radioactive Wastes, Vol. 2, Conference Proceedings, Monaco, November 16-21, 1959, pp. 189-197.

Limbaugh, C.

- 1958 Marine Outfall Studies by Qualified Diving Investigators. Proc. 12th Industrial Waste Conference, May 13-15, 1957, Engineering Extension Dept. Ser. No. 94, Purdue University, pp. 210-216.

Lindner, C. P.

- 1953 Intrusion of Sea Water in Tidal Sections of Fresh Water Streams. Proc. Amer. Society Civil Engineers, Vol. 79, Separate No. 358, pp. 1-35.

Maximon, L. C., and G. W. Morgan

- 1955 A Theory of Tidal Mixing in a "Vertically Homogeneous" Estuary. Jour. Mar. Res., Vol. 14, pp. 157-175.

McPherson, M. B.

- 1960 Diffusion in a Sectionally Homogenous Estuary. Proc. of the American Society of Civil Engineers, Sanitary Engineering Division, Vol. 86, No. SA-5, pp. 69-79.

Mills, K. E.

- 1952 Some Aspects of Pollution in Tidal Waters. Sewage and Industrial Wastes, Vol. 24, No. 9, pp. 1150-1158.

Moon, F. W., Bretschneider, C. L., and D. W. Hood

- 1957 A Method for Measuring Eddy Diffusion in Coastal Embayments. Inst. of Marine Science, Vol. 4, pp. 14-21.

Niles, T. M.

- 1957 Dispersal of Pollution by Tidal Movements. Proc. of the American Society of Civil Engineers, Sanitary Engineering Division, Vol. 83, No. SA-5, No. 1408, pp. 1-18., Discussion: Vol. 84, No. SA-2, 1958, Vol. 84, No. SA-3.

Nusbaum, I., and H. E. Miller

- 1952 The Oxygen Resources of San Diego Bay. Sewage and Industrial Wastes, Vol. 24, No. 12, pp. 1512-1527.

O'Brien, M. P.

- 1952 Salinity Currents in Estuaries. American Geophysical Union, Vol. 33, No. 4, pp. 520-522.

O'Connor, D. J.

- 1960 Oxygen Balance of an Estuary. Proc. of the American Society of Civil Engineers, Sanitary Engineering Division, Vol. 86, No. SA-3, pp. 35-55.

-
- Ogden, C. G., Gibbs, J. W., and A. L. H. Gameson**
1959 Some Factors Affecting the Aeration of Flowing Saline Water. *Water and Waste Treatment Jour.*, Vol. 7, No. 9, pp. 392-396.
- Orlob, G. T., and E. F. Eldridge**
1954 Deep-Water Disposal of Pulp Mill Wastes Into Port Gardner Bay, Everett, Washington. *Sewage and Industrial Wastes*, Vol. 26, No. 4, pp. 520-530.
- Parker, F. L.**
1958 Radioactive Tracers in Hydrologic Studies. *Trans. Amer. Geophysical Union*, Vol. 39, No. 3, pp. 434-439.
- Pearson, E. A.**
1956 An Investigation of the Efficacy of Submarine Outfall Disposal of Sewage and Sludge. Publication No. 14 of State Water Pollution Control Board, Sacramento, California, pp. 1-154.
- Pearson, E. A.**
1958 "Reduced Area" Investigation of San Francisco Bay. Report for the State Water Poll. Control Board, (Calif.) pp. 1-328.
- Pearson, E. A.**
1958 Submarine Waste Disposal Installations. *Proc. 6th Conference on Coastal Engineering*, pp. 586-605.
- Pearson, E. A., and G. A. Holt**
1960 Water Quality and Upwelling at Grays Harbor Entrance. *Limnology and Oceanography*, Vol. 5, No. 1, pp. 48-56.
- Pearson, E. A., Pomeroy, R. D., and J. E. McKee**
1960 Summary of Marine Waste Disposal Research Program in California. California State Water Pollution Control Board Publication No. 22, pp. 1-77.
- Pickard, G. L.**
1955 British Columbia Inlets. *American Geophysical Union*, No. 5, pp. 897-901.
- Pickard, G. L.**
1956 Physical Features of British Columbia Inlets. *Trans. Roy. Soc. Canada*, Vol. L, Ser. III, pp. 47-58.
- Pickard, G. L., and R. W. Trites**
1957 Fresh Water Transport Determination from the Heat Budget with Applications to British Columbia Inlets. *Jour. Fish. Res. Bd. Canada*, Vol. 14, No. 4, pp. 605-616.

- Pickard, G. L., and K. Rodgers**
1959 Current Measurements in Knight Inlet, British Columbia. Jour. Fish. Res. Bd. Canada, Vol. 16, No. 5, pp. 635-678.
- Pritchard, D. W., and W. V. Burt**
1951 An Inexpensive and Rapid Technique for Obtaining Current Profiles in Estuarine Waters. Jour. Marine Research, Vol. 10, pp. 180-193.
- Pritchard, D. W.**
1952 Estuarine Hydrography. In: Advances in Geophysics, Vol. 1, pp. 243-280.
- Pritchard, D. W.**
1952 Salinity Distribution and Circulation in the Chesapeake Bay Estuarine System. Jour. Marine Research, Vol. 11, No. 2, pp. 106-123.
- Pritchard, D. W.**
1955 Estuarine Circulation Patterns. Proc. Amer. Soc. Civil Engineers, Proc. Vol. 81, Separate No. 717, pp. 1-11.
- Pritchard, D. W.**
1956 The Dynamic Structure of a Coastal Plain Estuary. Jour. Marine Research, Vol. 15, No. 1, pp. 33-42.
- Pritchard, D. W.**
1956 A Method for Determining the Mean Longitudinal Velocities in a Coastal Plain Estuary. Jour. Marine Research, Vol. 15, No. 1, pp. 81-91.
- Pritchard, D. W.**
1960 Problems Related to Disposal of Radioactive Wastes in Estuarine and Coastal Waters. Biological Problems in Water Pollution - Transactions of the 1959 Seminar, Robert A. Taft Sanitary Engineering Center, U. S. Public Health Service, Cincinnati, Ohio, pp. 22-32.
- Pritchard, D. W.**
1960 The Application of Existing Oceanographic Knowledge to the Problem of Radioactive Waste Disposal Into the Sea. Disposal of Radioactive Wastes, Vol. 2, Conference Proceedings, Monaco, November 16-21, 1959, pp. 231-248.
- Rawn, A. M.**
1930 Results of Experimental Work on Outlet Structures, Los Angeles County Sanitation Districts. Sewage Works Journal, Vol. 2, No. 1, pp. 25-28.
- Rawn, A. M., and H. K. Palmer**
1930 Pre-Determining the Extent of a Sewage Field in Sea Water. Trans. Amer. Society Civil Engineers, Vol. 94, Paper No. 1750, pp. 1036-1060.

Rawn, A. M., and H. K. Palmer

1946 Mapping the Field of Contamination Over an Ocean Sewer Outfall. *Water and Sewage Works*, Vol. 93, No. 9, pp. 363-366.

Rawn, A. M., and F. R. Bowerman

1954 Disposal of Digested Sludge by Dilution. *Sewage and Industrial Wastes*, Vol. 26, No. 11, pp. 1309-1314.

Rawn, A. M., Bowerman, F. R., and N. H. Brooks

1960 Diffusers for Disposal of Sewage in Sea Water. *Journal Sanitary Engineering Division, Proc. of the American Society of Civil Engineers*, Vol. 86, No. SA-2, pp. 65-105.

Redfield, A. C.

1950 Some Applications of Oceanography to Engineering Problems. *Jour. Boston Soc. Civ. Eng.*, Vol. 37, No. 3, pp. 275-295.

Redfield, A. C., and L. A. Walford

1951 A Study of Chemical Waste Disposal at Sea. *National Academy of Sciences - National Research Council*, Pub. No. 201, pp. 1-49.

Revelle, R., Folsom, T. R., Goldberg, E. D., and J. D. Isaacs

1955 Nuclear Science and Oceanography. *Proc. First Int. Conf. on Peaceful Uses of Atomic Energy*, Geneva, Aug. 8-20, 1955, Vol. 13, P/277, pp. 371-380.

Revelle, R., and M. B. Schaefer

1957 General Considerations Concerning the Oceans as a Receptacle for Artificially Radioactive Materials. *National Academy of Sciences - National Research Council*, Pub. No. 551, pp. 1-25.

Revelle, R., and M. B. Schaefer

1958 Oceanic Research Needed for Safe Disposal of Radioactive Wastes at Sea. *Proc. 2nd International Conference on Peaceful Uses of Atomic Energy*, June 1958, Session D-19, P/2431, pp. 364-370.

Rice, E. K., and J. W. Johnson

1954 Waves as a Factor in Effluent Disposal. *Water and Sewage Works*, Vol. 101, No. 4, pp. 172-175.

Richards, F. A., and N. Corwin

1956 Some Oceanographic Applications of Recent Determinations of the Solubility of Oxygen in Sea Water. *Limnology and Oceanography*, Vol. 1, No. 4, pp. 263-267.

Richardson, L. F., and H. Stommel

- 1948 Notes on Eddy Diffusion in the Sea, *Jour. of Meterology*, Vol. 5, pp. 238-240.

Schultz, E. A., and H. B. Simmons

- 1957 Fresh Water-Salt Water Density Currents, a Major Cause of Siltation in Estuaries. Nineteenth Navigational Congress, London, England - 1957, Paper S-II, C-3, pp. 1-20.

Simmons, H. B.

- 1955 Some Effect of Upland Discharge on Estuarine Hydraulics. Hydraulics Division, Proc. of the American Society of Civil Engineers, Vol. 81, No. 792, pp. 1-20.

Southgate, B. A.

- 1958 Discharge of Sewage and Industrial Wastes to Estuaries. *Jour. Inst. Pub. Health Engineers, (England)* pp. 177-195.

Stewart, R. W.

- 1957 A Note on the Dynamic Balance in Estuarine Circulation. Comment by Donald W. Pritchard, *Journal of Marine Research*, Vol. 16, No. 1, pp. 34-39.

Stommel, H.

- 1949 Horizontal Diffusion Due to Oceanic Turbulence. *Jour. Marine Research*, Vol. 8, pp. 199-225.

Stommel, H., and H. G. Farmer

- 1952 Abrupt Change in Width in Two-layer Open Channel Flow. *Jour. Marine Research*, Vol. 11, No. 2, pp. 205-214.

Stommel, H., and H. G. Farmer

- 1953 Control of Salinity in an Estuary by Transition. *Jour. Marine Research*, Vol. 12, No. 1, pp. 13-20.

Stommel, H.

- 1953 Computation of Pollution in Vertically Mixed Estuary. *Sewage and Industrial Wastes*, Vol. 25, No. 9, pp. 1065-1071.

Swain, F. E.

- 1951 Determination of Flows in Interconnected Estuarine Channels Produced by the Combined Effects of Tidal Fluctuations and Gravity Flows. *American Geophysical Union*, Vol. 32, No. 5, pp. 653-672.

Sylvester, R. O.

- 1952 Pulp Mill Location Study in Regard to Water Pollution. *Sewage and Industrial Wastes*, Vol. 24, No. 4, pp. 508-521.

Tabata, S., and G. L. Pickard

- 1957 The Physical Oceanography of Bute Inlet, British Columbia. *Jour. Fish. Res. Bd. Canada*, Vol. 14, No. 4, pp. 487-520.

-
- Todd, D. K., and L. Lau**
1956 On Estimating Stream Flow Into a Tidal Estuary. *Trans. Amer. Geophysical Union*, Vol. 37, No. 4, pp. 468-473. Discussion by D. W. Pritchard, *Trans. Vol. 38, No. 4*, pp. 581-584.
- Townsend, L. D., Eriksen, A., and H. Cheyne**
1941 Pollution of Everett Harbor. State of Washington Pollution Commission, Bulletin No. 3, 56 pp.
- Truesdale, G. A., Downing, A. L., and C. F. Lowden**
1955 The Solubility of Oxygen in Pure Water and Sea Water. *Jour. Appl. Chem.*, Vol. 5, No. 2, pp. 53-62.
- Tully, J. P.**
1948 Pollution Research in Alberni Inlet. Fisheries Research Board of Canada, Pacific Progress Report, No. 76, pp. 66-71.
- Tully, J. P.**
1949 Oceanography and Prediction of Pulp Mill Pollution in Alberni Inlet. Bulletin Fisheries Research Board of Canada, No. 83, 169 pp.
- Tully, J. P., and A. J. Dodimead**
1957 Properties of the Water in the Strait of Georgia, British Columbia, and Influencing Factors. *Jour. Fish. Res. Bd. Canada*, Vol. 14, No. 3, pp. 241-319.
- Tyler, R. G.**
1950 Disposal of Sewage Into Tidal Waters. *Sewage and Industrial Wastes*, Vol. 22, No. 5, pp. 685-696.
- U. S. Department of Commerce**
1954 Radioactive-Waste Disposal in the Ocean. National Bureau of Standards, Handbook 58, 31 pp.
- Vavasour, G. R., and A. A. Blair**
1955 Pollution Survey of Humber Arm and Exploits River. *Journal Fisheries Research Board of Canada*, Vol. 12, No. 6, pp. 682-697.
- Waldichuk, M., and J. P. Tully**
1953 Pollution Study in Nanaimo Harbour. Fisheries Research Board of Canada, Pacific Progress Report, No. 97, pp. 14-17.
- Waldichuk, M.**
1954 Effect of Pulp Mill Waste in Alberni Harbour. Fisheries Research Board of Canada, Pacific Progress Report, No. 101, pp. 23-26.

Waldichuk, M.

- 1955 Effluent Disposal From the Proposed Pulp Mill at Crofton. Fisheries Research Board of Canada, Pacific Progress Report, No. 102, pp. 6-9.

Waldichuk, M.

- 1956 Pulp Mill Pollution in Alberni Harbour, British Columbia. Sewage and Industrial Wastes, Vol. 28, No. 2, pp. 199-205.

Waldichuk, M.

- 1957 Report on Pollution Studies Conducted in Western Canada. Biological Problems in Water Pollution: Trans. of a Seminar, Apr. 23-27, 1956, Robert A. Taft Sanitary Engineering Center, U.S. Public Health Service, Cincinnati, Ohio, pp. 188-194.

Waldichuk, M.

- 1958 Summer Oceanography in Osborn Bay, B. C. Progress Repts., Pacific Coast Stations, Fish. Res. Bd. Canada, No. 110, pp. 6-12.

Waldichuk, M.

- 1960 Effects of Pulp and Paper Mill Wastes on the Marine Environment. Biological Problems in Water Pollution—Transactions of the 1959 Seminar, Robert A. Taft Sanitary Engineering Center, U. S. Public Health Service, Cincinnati, Ohio, pp. 160-176.

Wheatland, A. B., Barrett, M. J., and A. M. Bruce

- 1959 Some Observations on Denitrification in Rivers and Estuaries. Jour. and Proc. of Inst. of Sewage Purification, Pt. 2, pp. 149-159.

BASIC OVER-ALL REFERENCES

Barnes, H.

- 1959 Apparatus and Methods of Oceanography; Pt. 1, Chemical. George Allen and Unwin Ltd., London, pp. 1-342.

Pearson, E. A. (Editor)

- 1960 Proceedings of the First International Conference on Waste Disposal to the Marine Environment. Pergamon Press, pp. 1-569.