

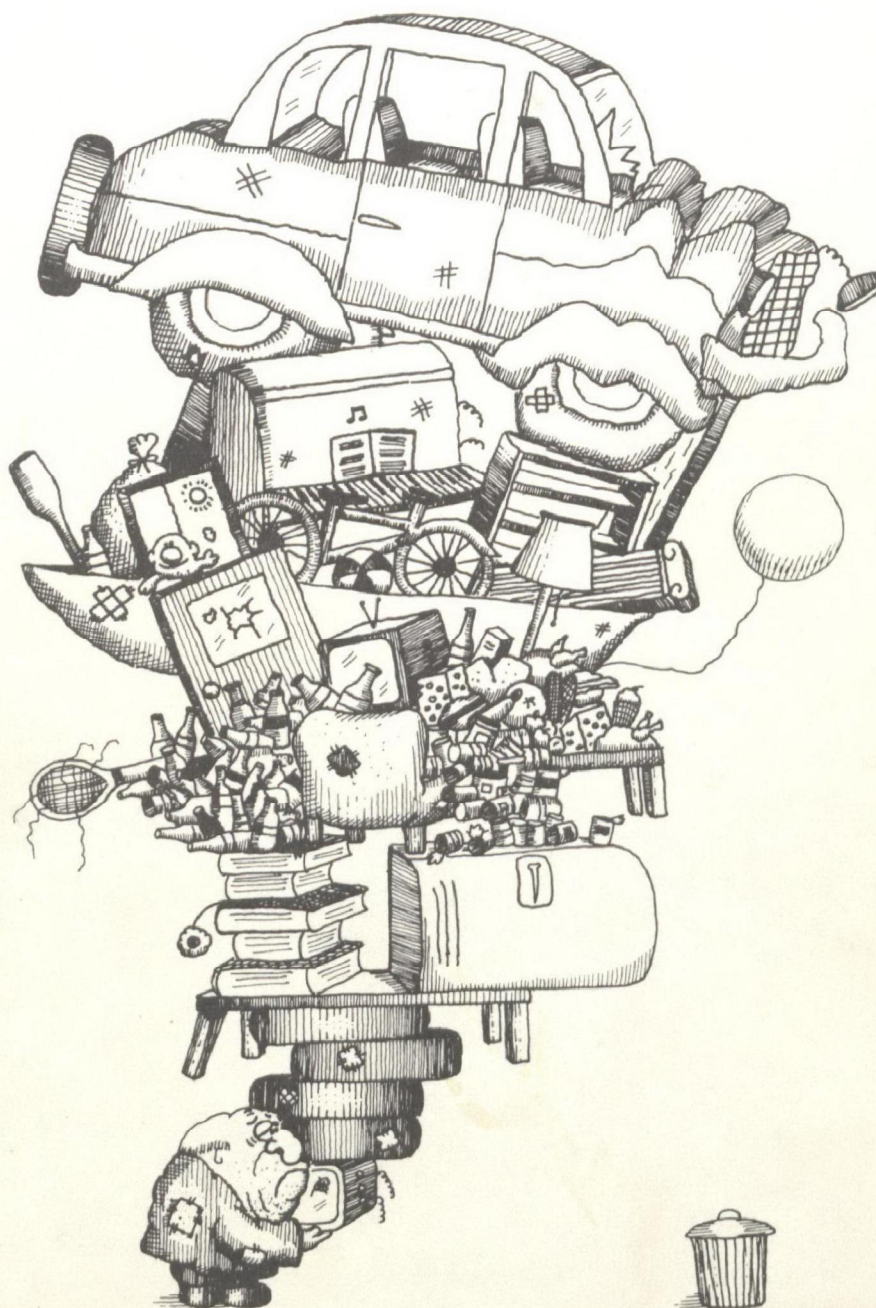
United States  
Environmental Protection  
Agency  
Region I

Office of  
Public Awareness  
J.F. Kennedy Federal Building  
Boston, MA 02203

April 1979



# A New England Recycling Directory



# **A NEW ENGLAND RECYCLING DIRECTORY**

Office of Public Awareness  
Region I  
U.S. Environmental Protection Agency  
Boston, Massachusetts  
1979

# TABLE OF CONTENTS

| CHAPTER |  | PAGE |
|---------|--|------|
| I.      | Foreword                                     | v    |
| II.     | Organizing a Recycling Program               | 1    |
| III.    | State Solid Waste Agencies                   | 5    |
| IV.     | Recycling Programs in New England            | 7    |
|         | Connecticut                                  | 7    |
|         | Maine  | 14   |
|         | Massachusetts                                | 15   |
|         | New Hampshire                                | 23   |
|         | Rhode Island                                 | 25   |
|         | Vermont                                      | 27   |
| V.      | Markets for Recycled Material in New England | 29   |
|         | Connecticut                                  | 30   |
|         | Maine  | 32   |
|         | Massachusetts                                | 34   |
|         | New Hampshire                                | 38   |
|         | Rhode Island                                 | 40   |
|         | Vermont                                      | 42   |

## **FOREWORD**

With the growing concern over environmental issues, many New England citizens find themselves seeking ways to contribute to a cleaner environment. For these citizens one of the first ideas that comes to mind is to initiate a community recycling program to help alleviate local solid waste problems and energy and mineral shortages.

This directory, in addition to answering the question "What communities have recycling programs?" is intended to assist interested civic groups and municipal leaders with the development of a community recycling program.

To accomplish this intent we have first described the important aspects to consider when implementing a recycling program. This description is followed by a listing of the New England state solid waste management programs and a listing of communities in New England known to have recycling programs. Your state solid waste program and most local recycling program leaders are willing and able to offer valuable information on how to start and operate a recycling program. Because of the importance of locating buyers for recycled materials, we have also included a listing of companies in New England that reportedly will purchase materials from recycling programs.

Most of the information for the listing in this directory was acquired from responses to a questionnaire that was sent to municipal and environmental groups in New England. In many cases our questionnaire did not reach the person most knowledgeable about an existing recycling program; consequently, our information is not as complete as we had initially hoped. If you are aware of any recycling program or market for recycled materials that is not listed in this directory, or if you find that any listed program has significantly changed its operation, please contact:

Office of Public Awareness  
U. S. Environmental Protection Agency  
John F. Kennedy Federal Building  
Boston, Massachusetts 02203

# HOW TO ORGANIZE A RECYCLING PROGRAM

Recycling is not a new idea, it has been practiced in one form or another throughout history. Today, it is practiced by industries, charitable organizations, service groups, and private individuals.

A community recycling center, in addition to collecting and recycling valuable resources, also serves as a tool for environmental education. Greater recycling efforts will occur as public awareness increases.

Community recycling centers usually handle glass, beer bottles, newsprint, metals, and cardboard. Four operating methods to handle these materials have proven successful. A recycler may combine several of these approaches to increase collection of materials and to best serve the community.

## **Scheduled Collection Center**

Presently, the most common method of operation is the scheduled collection center. This requires a permanent location in a populated, easily observed area, with facilities large enough to store materials. Established operating hours (clearly posted on signs) and easy access for the public must be maintained. A well-run, scheduled collection center promotes contact and communication with its patrons.

The staff should accept only well-prepared materials. Cleanup problems at the center can be reduced by providing unattended containers for after hour drop-offs.

## **Unattended Collection Centers**

These centers provide the public with 24-hour service. Many single-item drops operate this way. A drop-off site requires a permanent location in a populated, visible area. Sturdy collection containers designed for ease of transport, loading and unloading, and prevention of pilferage are necessary.

On-site signs should state what materials are acceptable and how they should be prepared.

## **Monthly Project**

Many motivated groups with limited time but a firm commitment to community service have used this method successfully. Once a month materials are collected, prepared, and marketed all in the same day. A monthly project must be well planned and organized. The collection day and materials to be saved must be made known to the public. Signs can accomplish this advance notice.

A monthly project can work with an established recycling center, which usually has transportation, baling, and storage facilities, and may be willing to pick up all well-prepared materials. Price arrangements for collected materials must be made on an individual basis with each recycling center.

## **Pick-Up-Service**

Door-to-door pick-up service is the accepted approach to garbage collection; however, it has not been widely used in recycling. However, EPA has provided assistance to two (2) Massachusetts communities, Somerville and Marblehead, which have successfully used the pick-up method in their recycling programs. Additional information on these programs may be obtained by ordering publication #5 on the order form in the back of this Directory.

There are two types of pick-up service:

1. The "response-to-call," which sends a collection vehicle to pick up recycled materials. This type is inefficient due to fuel costs; and
2. The "scheduled pickup," similar to a garbage service, can collect all prepared materials from a household.

Effective educational campaigns directed at your patrons will stimulate proper material preparation before pickup. After collection, segregated, recyclable material can be marketed. Remaining refuse must be disposed of properly.

## **ACTIVITIES CHECKLIST**

This checklist is designed to help you systematically plan a recycling center or project:

1. Establish the need for a community recycling center.
2. Contact interested community groups and individuals. Tell them of your plans and ask for their help.
3. Form a committee of interested community people willing to help with the necessary legwork.

## **Markets**

Before starting your recycling operation:

1. Secure markets for collected materials; and
2. Examine the operation costs involved.

## **Financing**

Prior to opening your center:

1. Acquire tools and equipment (purchased or donated), barrels or large containers for separation of materials, and equipment for moving them.
2. Acquire funds for promotional materials. Promotion can be accomplished by ads in shoppers guides, community bulletins, door-to-door notices, or TV and radio spots. One or all of these are needed to inform patrons of your services.
3. Operational funds can be obtained from several sources: hold a benefit social event; obtain a federal tax exempt, nonprofit status so that donations of money and equipment are tax deductible; or get a community group to support you.
4. Plan for the use of earned income. Some centers support community charities. Others use profits to support additional recycling centers.

### **5. Safety**

Safety is an important consideration. Contact the Department of Labor for the General Safety and Health Standards.

## **An Operating Site**

1. Find a permanent site with storage space for stockpiling materials. Preferably, this site should be donated, centrally located, easily accessible, with some covered area to keep customers, paper products, and workers dry. For a monthly project, a well-known site, such as a school or shopping center, is good.
2. Realtors or business groups may know of a vacant building available for a recycling center. A detailed outline of the materials you will accept and how the center will operate is essential when approaching these groups. They will also require financial information.
3. Consider leases, zoning, and insurance coverage when selecting your operation site.

## **Transportation**

1. Consider how transportation will be acquired. Alternatives include rental, purchase, cooperative agreements with other regional recyclers, or donated services, such as the national guard or other service groups.
2. Transportation design should consider such things as the lift gate or ramp system needed to get full barrels of glass and cans into a truck bed, a covered truck bed for hauling paper products, and roll-on/roll-off boxes and shipping containers.

3. Transportation costs are an important consideration in determining your site location's suitability.

## **Staff**

1. Your staff may be a volunteer, paid, or a combination staff. The best sources of manpower may come from municipal employees, service clubs, or student or civic groups. One person can spark a recycling program, but no one can operate it alone.
2. Skills needed include: a staff coordinator, public relations/educator, bookkeeper, and truck driver; however, one person may possess many of these skills.

## **Operating Schedule**

1. Operate on a trial basis once or twice a week to see how it goes. This will give you an opportunity to work out any problems in your operation and to gauge public response.
2. Set regular hours in the early evening, on weekdays, and on one weekend day.

## **Publicity/Education**

1. The key to success is to educate the public about the advantages of recycling as an alternative to solid waste disposal. To do this effectively, develop a slide show of your operation. Schools and community groups are always looking for good speakers. You might consider publishing a newsletter.
2. Make your project known; design a promotional flier. Invite the media to the "grand opening" of your center. Write radio spots which local radio stations may air as a free public service. Ask local T.V. stations to help you design a public service spot.

## **RECYCLABLE MATERIALS PREPARATION**

### **Glass**

Separate the glass by color. (You will receive about 60 percent clear, 25 percent green, and 15 percent brown glass.) All metal lids must be removed. Then, the glass can be crushed for efficient storage and transportation.

There are several methods used to process uncrushed glass into cullet. Mechanical glass crushers are available; however, hand-breaking may be just as effective.

Use strong metal containers, such as drop boxes, 20-gallon drums, and 55-gallon drums, to hold the crushed glass (cullet). A hand truck or barrel dolly should be used to handle full containers.

### **Newspapers**

Newspapers are the easiest material to prepare for marketing. Remove any magazines, phone books, or

bound books, and bundle the paper with twine. Keep twine and scissors available for your patrons, so they can bundle their own newsprint.

Newspapers must be kept dry and protected from possible fire hazards. Paper brokers may supply a semi-trailer or dumpster for your paper collection. If you are doing your own hauling, the paper will need to be stored in a covered building until a haul can be made.

### **Cardboard**

Avoid contaminants such as wax-coated or tar-lined materials. Kraft paper and chipboard can be recycled with the cardboard material, but check with your broker first. Cardboard boxes should be broken down flat and hauled loose, in bundles, or in bales. A laundry cart or bin is good for loose material. Strapping devices or twine can be used for loosely bundling the material. Some brokers require delivery of cardboard in compressed bales. Balers are available commercially or sometimes on a loan or rental basis through your broker.

### **High-Grade Papers**

A high degree of quality control insures that all contaminants are removed from high-grade paper before it is marketed. This requires hand sorting of material after it is collected. You can get a higher price for white ledger when it is separated from colored ledger.

High grades are transported in a variety of ways. Check with your broker for delivery instructions.

### **Metals**

A community recycling center will sometimes accept aluminum, bi-metal, and "tin" cans, which are common metals found in every household.

To receive the highest market price, you should sort these materials. Your buyer may require you to sort the aluminum into two types, keeping the "can" material separate from other types. "Tin" cans must be paper-free and flattened for efficient shipping. Bi-metal

cans, which are not always marketable, present difficulties for the recycler and must be kept separate from aluminum cans.

Sorted metal material can be stored and transported to market in 55-gallon drums, wooden bins, laundry carts, steel boxes, or bales. Your method will depend upon financial resources and the amount of material you are collecting.

### **Other Materials**

Other materials such as car batteries, crankcase oil, plastics, copper wiring, appliances, and rags are also recyclable. Preparation requirements for these materials vary. It is best to check with your buyer about preparation before accepting these materials; you may not have the facilities to handle them.

## **LEGAL CONSIDERATIONS**

### **Local**

Your city may require a ***business license*** for operation within the city limits. Contact your city hall for details.

If you plan to establish a recycling site, check for ***zoning ordinances*** with your city or county planning departments.

Be sure your site is ***in compliance with local codes***, which often detail everything from fire safety requirements to sign restrictions. Most cities also have nuisance abatement ordinances, which detail what is classified as a nuisance under the law. Contact your ***local health department***.

Federal, state, and local regulations often appear complex and confusing. If you are in doubt about complying with a certain regulation, check with the officials or agency concerned ***before*** complaints are received concerning your operation. A well planned and designed recycling collection center will receive support (not discouragement) from governmental agencies.

## **A FINAL WORD**

This guide is intended to help you in planning your community recycling center. It does not contain the answers to all the problems that might arise. Therefore, if you have any questions, call your state Solid Waste Agency.

# **NEW ENGLAND STATE SOLID WASTE MANAGEMENT AGENCIES**

When a civil group or municipal director is planning to initiate a recycling project in their community, they should contact their state solid waste management agency for available information.

## **CONNECTICUT**

### **Bob Meyers**

Solid Waste Management Program  
Department of Environmental Protection  
165 Capitol Avenue  
Hartford, Connecticut 06106  
(203) 566-5847

## **NEW HAMPSHIRE**

### **Tom Sweeny**

Bureau of Solid Waste  
Department of Health and Welfare  
State Laboratory Building  
Hazen Drive  
Concord, New Hampshire 03301  
(603) 271-2605

## **MAINE**

### **Ron Howes**

Division of Solid Waste Management Control  
Bureau of Land Quality  
Department of Environmental Protection  
State House  
Augusta, Maine 04333  
(207) 289-2111

## **RHODE ISLAND**

### **John Quinn**

Division of Solid Waste Management  
Department of Health  
204 Health Building  
Davis Street  
Providence, Rhode Island 02908  
(401) 277-2808

## **MASSACHUSETTS**

### **Mark Jones**

Division of Solid Waste Disposal  
Department of Environmental Management  
Room 1905  
Leverett Saltonstall Building  
Boston, Massachusetts 02202  
(617) 727-4293

## **VERMONT**

### **Richard Valentinetti**

Air and Solid Waste Programs  
Agency of Environmental Conservation  
P. O. Box 489  
Montpelier, Vermont 05602  
(802) 828-3395



# RECYCLING PROGRAMS IN NEW ENGLAND

Following is an alphabetical listing for each of the six New England states, of the municipalities reported to have recycling programs.

As stated earlier, if you are aware of any recycling program that is not listed in this directory, or if you find that any listed program has significantly changed its operation, please contact the U. S. Environmental Protection Agency's Office of Public Awareness.

## CONNECTICUT

### AVON 06001

METHOD: Recycling Center  
LOCATION: Huckleberry Hill Rd.  
SCHEDULE: Mon. - Fri. 8 AM-2:30 PM,  
Sat. 8 AM - 3 PM, Closed Tues.  
MATERIALS: Paper, Bulky Metal  
SPONSOR: Town  
CONTACT: Clifton O. Crawford  
(203) 673-6151

### BERLIN 06037

METHOD: Recycling Center  
LOCATION: Semore Rd.  
SCHEDULE: 7 Days, 24 Hours  
MATERIALS: Paper, Glass  
SPONSOR: Berlin Youth Council  
CONTACT: Robert Gunning  
(203) 666-6127

### BERLIN

METHOD: Curbside Collection  
SCHEDULE: Weekly  
MATERIALS: Paper, Glass, Cans  
SPONSOR: Private Co.

### BLOOMFIELD 06002

METHOD: Curbside Collection  
SCHEDULE: Weekly  
MATERIALS: Paper, Bulky Metals  
SPONSOR: Town  
CONTACT: Bob Sanborn  
(203) 243-8971

### BRIDGEWATER 06752

METHOD: Recycling Center  
LOCATION: Town Garage  
SCHEDULE: Sat. 9 AM - Noon  
MATERIALS: Paper

### BRISTOL 06010

METHOD: Recycling Center  
LOCATION: Corner of Hepburn and Dorothy Rds.  
SCHEDULE: Sat. 9 AM - 4 PM  
MATERIALS: Paper, Glass, Aluminum  
SPONSOR: Bristol Regional Environmental Center  
CONTACT: Gerald Stackhouse  
(203) 589-6082

### CHESHIRE 06410

METHOD: Recycling Center  
LOCATION: Landfill, Waterbury Rd.  
SCHEDULE: Mon. - Sat. 8 AM - 3 PM  
MATERIALS: Paper, Glass, Cans  
SPONSOR: Public Works Dept.  
CONTACT: Ronald K. Kennedy  
(203) 272-8304

### CHESTER 06412

METHOD: Recycling Center  
LOCATION: Town Garage, Grote Rd.  
SCHEDULE: Daily 7:30 AM - 4 PM  
MATERIALS: Paper, Glass, Cans, Tires  
SPONSOR: Public Works Dept.  
CONTACT: Robert Blair  
(203) 526-5272

**CORNWALL 06796**

METHOD: Recycling Center  
 LOCATION: Landfill - Rt. 4  
 SCHEDULE: Tues. & Sat. 9 AM - 4:30 PM,  
 Sun. 9 AM - Noon  
 MATERIALS: Paper, Glass, Aluminum, Tires  
 SPONSOR: Board of Selectmen  
 CONTACT: W. Bradford Walker, Jr.  
 (203) 672-6487

**CORNWALL**

METHOD: Curbside Collection  
 SCHEDULE: Bi-weekly  
 MATERIALS: Paper, Glass, Aluminum, Tires

**DANBURY 06810**

METHOD: Recycling Center  
 LOCATION: Old Plumtrees Rd.  
 SCHEDULE: 7 Days, 7 AM - 6 PM  
 SPONSOR: Conn. Earth Action Group  
 CONTACT: Norman Cusack  
 (203) 746-2346

**DEEP RIVER 06820**

METHOD: Recycling Center  
 LOCATION: Landfill - Route 80  
 SCHEDULE: Mon., Wed., Fri., Sat. 8 AM - 4 PM,  
 Sun. 8 AM - 1 PM  
 MATERIALS: Paper, Glass, Cans  
 SPONSOR: American Legion Post #61  
 CONTACT: Arthur Winschel  
 (203) 526-2304

**EAST GRANBY 06026**

METHOD: Recycling Center  
 LOCATION: Landfill  
 SCHEDULE: 8 AM - 4:30 PM  
 MATERIALS: Paper  
 SPONSOR: Municipal  
 CONTACT: Frank R. Rothammer  
 (203) 653-2576

**EAST HARTFORD 06108**

METHOD: Recycling Center  
 LOCATIONS: Firehouse #1  
 Police & Court Building  
 Town Garage  
 SCHEDULE: 7 Days, 24 Hours  
 MATERIALS: Glass  
 SPONSOR: Public Works Dept.  
 CONTACT: William J. Hutt  
 (203) 289-2781

**EAST LYME 06333**

METHOD: Curbside Collection  
 SCHEDULE: Weekly  
 MATERIALS: Paper, Glass, Cans  
 SPONSOR: Public Works Dept.  
 CONTACT: William J. Malcolm  
 (203) 739-8444

**ENFIELD 06082**

METHOD: Curbside Collection  
 SCHEDULE: Weekly  
 MATERIALS: Paper  
 SPONSOR: Municipal  
 CONTACT: Joseph Albano  
 (203) 745-0371

**FARMINGTON 06032**

METHOD: Recycling Center  
 LOCATION: Highway Garage  
 SCHEDULE: 7 Days, 24 Hours  
 MATERIALS: Paper, Glass, Cans  
 SPONSOR: Highway Dept.  
 CONTACT: James Blum  
 (203) 677-0074

**GLASTONBURY 06033**

METHOD: Recycling Center  
 LOCATION: New London Turnpike  
 SCHEDULE: Mon. - Sat. 7:30 AM - 4 PM  
 MATERIALS: Paper, Glass, Cans, Textiles, Cardboard,  
 Metals, Plastic Bottles  
 SPONSOR: Public Works Dept.  
 CONTACT: Ralph F. Mandeville, Jr.  
 (203) 633-5231, Ext. 267

**GOSHEN 06756**

METHOD: Recycling Center  
 LOCATION: Town Garage - Route 4E  
 SCHEDULE: 3rd Sat. of Month, 9 AM - Noon  
 MATERIALS: Paper, Glass  
 SPONSOR: Conservation Commission  
 CONTACT: Mrs. Edward Weber  
 North St.

**GOSHEN**

METHOD: Curbside Collection  
 SCHEDULE: Monthly  
 MATERIALS: Paper, Glass  
 SPONSOR: Girl Scouts & Town  
 CONTACT: Richard C. Kobylenski  
 (203) 491-2308

**GRANBY 06035**

METHOD: Recycling Center  
 LOCATION: Rt. 189  
 SCHEDULE: Call for Hours  
 MATERIALS: Paper, Glass, Cans  
 SPONSOR: Granby Recycling  
 CONTACT: Susan C. Heminway  
 (203) 653-3851

**GREENWICH 06830**

METHOD: Recycling Center  
 LOCATION: Holly Hill Lane  
 SCHEDULE: Mon. - Fri. 7:30 AM - 3 PM,  
 Sat. 7:30 AM - Noon  
 MATERIALS: Paper, Glass, Cans, Metal, Plastic  
 SPONSOR: Greenwich Recycling Action Board  
 CONTACT: Robert Lucas  
 (203) 622-7710

**GRISWALD, JEWETT CITY 06351**

METHOD: Recycling Center  
 LOCATION: Main St., Jewett City  
 SCHEDULE: Mon. - Fri. 10 AM - 4 PM  
 MATERIALS: Paper, Glass  
 SPONSOR: Happy Time Club  
 CONTACT: Mr. Elzear Cotriait

**GROTON 06340**

METHOD: Recycling Center  
 LOCATION: Town Garage  
 SCHEDULE: 7 Days, 24 Hours  
 LOCATION: Landfill  
 SCHEDULE: Mon. - Sat. 7 AM - 5 PM,  
 Sun. 8 AM - Noon  
 MATERIALS: Paper, Glass, Motor Oil  
 SPONSOR: Public Works Dept.  
 CONTACT: Walter P. Blanker  
 (203) 445-8551, Ext. 223

**GROTON**

METHOD: Curbside Collection  
 SCHEDULE: Bi-Weekly  
 MATERIALS: Paper, Metals, Glass

**GUILFORD 06437**

METHOD: Recycling Center  
 LOCATION: 31 Park St.  
 SCHEDULE: 7 Days, 24 Hours  
 MATERIALS: Glass, Cans  
 SPONSOR: Guilford Recycling  
 CONTACT: Mrs. Gorden A. Evens  
 210 Dramora Rd.

**GUILFORD**

METHOD: Recycling Center  
 LOCATION: Town Hall  
 SCHEDULE: Daylight Hours  
 MATERIALS: Paper  
 SPONSOR: Volunteer Fire Dept.  
 CONTACT: Marcus Scott  
 (203) 453-2575

**HARTFORD 06120**

METHOD: Recycling Center  
 LOCATION: 70 Incinerator Rd.  
 SCHEDULE: Mon. - Sat. 8 AM - 4 PM  
 MATERIALS: Glass, Metals  
 SPONSOR: Public Works Dept.  
 CONTACT: Rene Sevigny  
 (203) 566-6389

**HARTFORD**

METHOD: Curbside Collection  
 SCHEDULE: Weekly  
 MATERIALS: Paper, Metals

**HEBRON 06248**

METHOD: Recycling Center  
 LOCATION: Landfill  
 SCHEDULE: Call for Hours  
 MATERIALS: Paper, Cans  
 SPONSOR: Public Works Dept.  
 CONTACT: Aaron Reid  
 (203) 228-9406

**MADISON 06443**

METHOD: Recycling Center  
 LOCATION: Bridge St.  
 SCHEDULE: 7 Days, 24 Hours  
 MATERIALS: Paper, Glass  
 SPONSOR: Public Works Dept.  
 CONTACT: D. Stewart MacMillan, Jr.  
 (203) 245-7384

**MARLBOROUGH 06447**

METHOD: Recycling Center  
 LOCATION: Quin Road  
 SCHEDULE: Sat., Sun., Mon., Wed. 9 AM - 4 PM  
 MATERIALS: Paper, Glass, Cans  
 SPONSOR: Town Contractor  
 CONTACT: Thomas Mills  
 (203) 295-9929

**MERIDEN 06040**

METHOD: Recycling Center  
 LOCATION: 245 State St. Extension  
 SCHEDULE: Mon., Fri. 8 AM - Noon,  
 12:30 PM - 4:30 PM  
 MATERIALS: Paper, Glass, Cans, Plastic, Bulky Metals  
 SPONSOR: Public Works Dept.  
 & Meriden Recycling Center  
 CONTACT: Ralph Centola  
 (203) 235-5121

**MERIDEN**

METHOD: Curbside Collection  
 SCHEDULE: Weekly  
 MATERIALS: Paper, Glass, Cans

**MIDDLEBURY 06762**

METHOD: Recycling Center  
 LOCATION: 1021 Straits Turnpike  
 SCHEDULE: Mon. - Sat. 8 AM - 4 PM,  
 Sun. 8 AM - Noon  
 MATERIALS: Paper, Glass Metals  
 SPONSOR: Town  
 CONTACT: Joseph DeSantis  
 (203) 758-1616

**MILFORD 06460**

METHOD: Recycling Center  
 LOCATION: Landfill — Samuel Smith Ln.  
 SCHEDULE: Mon. - Sat. 8 AM - 4 PM,  
 Wed. 8 AM - Noon  
 MATERIALS: Glass, Cans, Bulky Metals  
 SPONSOR: Sanitation Dept.  
 CONTACT: Edmund L. O'Donnell  
 (203) 878-1731, Ext. 15

**MORRIS 06763**

METHOD: Recycling Center  
 LOCATION: Route 109, Lakeside  
 SCHEDULE: Wed. 1 PM - 4:30 PM,  
 Sat. 8 AM - 4:30 PM  
 MATERIALS: Paper, Glass  
 SPONSOR: Highway Dept.  
 CONTACT: Henry Weik  
 (203) 567-8359

**NEW FAIRFIELD 06810**

METHOD: Recycling Center  
 LOCATION: Landfill - Bigelow Rd.  
 SCHEDULE: Mon., Tues., Thurs. - Sat. 8 AM - 4 PM  
 MATERIALS: Paper, Glass, Cans  
 SPONSOR: Jaycees  
 CONTACT: Nickitas F. Panayotou  
 (203) 746-9858

**NEW LONDON 06320**

METHOD: Recycling Center  
 LOCATION: Lewis St.  
 SCHEDULE: Mon. - Fri. 8:30 AM - 4:30 PM  
 MATERIALS: Paper, Glass, Cans  
 SPONSOR: Public Works Dept.  
 CONTACT: Mr. Foley  
 (203) 443-2861

**NEW LONDON**

METHOD: Curbside Collection  
 SCHEDULE: Weekly  
 MATERIALS: Paper, Glass, Cans  
 SPONSOR: Public Works Dept.  
 CONTACT: Ruby Turner Morris  
 (203) 443-0684

**NEW MILFORD 06776**

METHOD: Recycling Center  
 LOCATION: Youngsfield Rd.  
 SCHEDULE: Mon. - Fri. 9 AM - 5 PM,  
 Sat. 1 PM - 4 PM  
 MATERIALS: Paper, Glass, Cans, Aluminum  
 SPONSOR: New Milford Youth Agency  
 CONTACT: G. Mark Mankin  
 (203) 354-0047

**NORTH HAVEN 06473**

METHOD: Recycling Center  
 LOCATION: Elm St.  
 SCHEDULE: 7 Days, 24 Hours  
 MATERIALS: Paper, Glass, Cans, Oil, Scrap Metals  
 SPONSOR: Recycling Dept.  
 CONTACT: Karl Veith or Richard Gillen  
 (203) 239-5321

**NORWALK 06850**

METHOD: Recycling Center  
 LOCATION: Ferris Ave.  
 SCHEDULE: Sat. 9 AM - Noon  
 MATERIALS: Paper, Glass, Aluminum  
 SPONSOR: Southern Conn. 7-Up Jocy Beverage  
 CONTACT: Mr. Gordon Gerrish  
 (203) 838-8477

**NORWALK**

METHOD: Curbside Collection  
 SCHEDULE: Bi-monthly  
 MATERIALS: Paper  
 SPONSOR: Department of Public Works  
 CONTACT: Mr. Thomas Kelly  
 (203) 838-7531, Ext. 303

**OLD LYME 06371**

METHOD: Recycling Center  
 LOCATION: Old Lyme Shopping Ctr.  
 SCHEDULE: 7 Days, 24 Hours  
 MATERIALS: Paper, Glass, Cans  
 SPONSOR: Board of Health  
 CONTACT: Frank R. Kneen  
 (203) 434-1882

**ORANGE 06477**

METHOD: Recycling Center  
 LOCATION: Disposal Area  
 SCHEDULE: Mon. - Sat. 8 AM - 5 PM  
 MATERIALS: Paper, Scrap Metals  
 SPONSOR: Public Works Dept.  
 CONTACT: Robert Hiza  
 (203) 795-0751

**OXFORD 06483**

METHOD: Recycling Center  
 LOCATION: Rt. 67  
 SCHEDULE: 7 Days, 24 Hours  
 MATERIALS: Glass, Cans  
 SPONSOR: Junior Women's Club  
 CONTACT: Carolynne Babb  
 (203) 888-5300

**OXFORD**

METHOD: Curbside Collection  
 SCHEDULE: Monthly  
 MATERIALS: Glass, Cans

**REDDING 06875**

METHOD: Recycling Center  
 LOCATION: Town Garage, Great Oak Lane  
 SCHEDULE: 2nd Sat. of every month 9 AM - Noon  
 MATERIALS: Paper, Glass, Cans, Metals  
 SPONSOR: Public Works Dept.  
 CONTACT: Jean Adler  
 (203) 938-2920

**RIDGEFIELD 06877**

METHOD: Recycling Center  
 LOCATION: South St. and Old Quarry  
 SCHEDULE: Mon. - Sat. 8 AM - 4 PM,  
 Sun. 8 AM - Noon  
 MATERIALS: Glass, Cans, Newsprint,  
 Telephone Books  
 SPONSOR: Ridgefield Environment Action  
 Program  
 CONTACT: Walter McNamara, Jr.  
 (203) 438-6340

**SALISBURY 06068**

METHOD: Recycling Center  
 LOCATION: Landfill, Rte. 41, Lakeville  
 SCHEDULE: Mon., Tues., Thurs. & Fri.  
 8:30 AM - 4 PM, Wed. 2 - 4:30 PM,  
 Sat. 8:30 AM - 2:30 PM,  
 Sun. 10 AM - Noon  
 MATERIALS: Paper, Glass, Cans, Scrap Metal  
 SPONSOR: Selectmen's Office  
 CONTACT: (203) 435-9512

**SEYMOUR 06483**

METHOD: Recycling Center  
 LOCATION: Wakeley St. Parking Lot  
 SCHEDULE: 7 Days, 24 Hours  
 MATERIALS: Glass, Cans  
 SPONSOR: Public Works Dept.  
 CONTACT: Ralph F. Ajello  
 (203) 735-6028

**SEYMOUR**

METHOD: Curbside Collection  
 SCHEDULE: Weekly  
 MATERIALS: Paper, Cans, Glass

**SHELTON 06484**

METHOD: Curbside Collection  
 SCHEDULE: Daily  
 MATERIALS: Glass, Metal, Cans  
 SPONSOR: Jaycees  
 CONTACT: James Severson  
 (203) 929-3927

**SIMSBURY 06070**

METHOD: Recycling Center  
 LOCATION: 66 Wolcott Rd.  
 SCHEDULE: Mon. - Sat. 8 AM - 4 PM  
 MATERIALS: Paper, Glass, Metals  
 SPONSOR: Public Works Dept.  
 CONTACT: Francis V. Rossi  
 (203) 651-3751

**SOUTH WINDSOR 06074**

METHOD: Curbside Collection  
 SCHEDULE: Weekly  
 MATERIALS: Paper  
 SPONSOR: Street Services Dept.  
 CONTACT: (203) 644-2531

**SOUTHBURY 06488**

METHOD: Recycling Center  
 LOCATION: Kettleton Road  
 SCHEDULE: Mon. - Sat. 7 AM - 4 PM  
 MATERIALS: Paper  
 SPONSOR: Southbury Volunteer Firemen  
 Assoc., Inc.  
 CONTACT: R. A. Brinley  
 LOCATION: Center Firehouse  
 SCHEDULE: Last. Sat. of even Months

**SOUTHINGTON 06488**

METHOD: Recycling Center  
 LOCATION: Mill St.  
 SCHEDULE: Daily, Sat. 9 AM - 3 PM  
 MATERIALS: Paper, Glass  
 SPONSOR: Southington Conservation Commission  
 CONTACT: Norman VanCor  
 (203) 621-5957

**STAMFORD 06902**

METHOD: Recycling Center  
 LOCATION: Hanover St.  
 SCHEDULE: Mon. - Sat. 8 AM - 3 PM  
 MATERIALS: Paper, Glass  
 SPONSOR: Public Works Dept.  
 CONTACT: Alan Ketcham  
 (203) 358-4617

**STAMFORD**

METHOD: Curbside Collection  
 SCHEDULE: Monthly  
 MATERIALS: Paper

**SUFFIELD 06093**

METHOD: Recycling Center  
 LOCATION: Landfill — Mountain Road  
 SCHEDULE: Mon., Wed., Sat. 8 AM - 4 PM  
 MATERIALS: Paper, Glass, Cans, Bulky Metals  
 SPONSOR: Municipal  
 CONTACT: William B. Kement

**THOMASTON 06787**

METHOD: Recycling Center  
 LOCATION: Chapel St.  
 SCHEDULE: Mon. - Sat. 9 AM - 4 PM  
 MATERIALS: Paper, Glass  
 SPONSOR: Street Dept.  
 CONTACT: Melvin Whalen  
 (203) 283-4421

**TORRINGTON 06790**

METHOD: Recycling Center  
 LOCATION: Franklin Drive  
 SCHEDULE: Call for Hours  
 MATERIALS: Paper, Glass  
 SPONSOR: Lark Industries  
 CONTACT: W. Pond  
 (203) 482-9364

**UNION 06076**

METHOD: Recycling Center  
 LOCATION: Behind Town Office Building  
 MATERIALS: Paper, Glass, Cans  
 SPONSOR: Municipal  
 CONTACT: Anna Mae Pallanck  
 (203) 684-3812

**VERNON 06066**

METHOD: Recycling Center  
 LOCATION: West Road  
 SCHEDULE: Sat. 10 AM - 2 PM  
 MATERIALS: Glass  
 SPONSOR: Recycling Committee  
 CONTACT: Joanne Nesteruk  
 (203) 872-3476

**WALLINGFORD 06492**

METHOD: Recycling Center  
 LOCATION: Landfill — Pent Road  
 SCHEDULE: Mon. - Fri. 8 AM - 4 PM  
 Sat. 8 AM - 3 PM  
 MATERIALS: Paper, Glass, Cans  
 LOCATION: Suburban Market, 12 Hope Hill Rd.  
 SCHEDULE: 7 Days, 24 Hours  
 MATERIALS: Glass, Cans

**WALLINGFORD**

LOCATION: Hastings Pharmacy, 823 East Center St.  
 SCHEDULE: 7 Days, 24 Hours  
 MATERIALS: Glass, Cans  
 SPONSOR: Recycling Committee of Wallingford  
 CONTACT: Mark Fekete  
 P. O. Box 344

**WATERFORD 06385**

METHOD: Recycling Center  
 LOCATION: 1000 Hartford Road  
 SCHEDULE: Daily 7:30 AM - 4 PM  
 MATERIALS: Glass, Bulky Metals  
 SPONSOR: Public Works Dept.  
 CONTACT: Edward D. Steward  
 (203) 442-0309

**WATERFORD**

METHOD: Curbside Collection  
 SCHEDULE: Weekly  
 MATERIALS: Paper

**WATERTOWN 06795**

METHOD: Recycling Center  
 LOCATION: Depot St.  
 SCHEDULE: 7 Days, 24 Hours  
 MATERIALS: Paper, Glass, Bulky Metals  
 SPONSOR: Public Works Dept.  
 CONTACT: William B. Owen  
 (203) 274-5411

**WEST HARTFORD 06107**

METHOD: Recycling Center  
 LOCATION: 25 Brixton St.  
 SCHEDULE: Mon. - Fri. 7:30 AM - 4:30 PM,  
 Sat. 7:30 AM - 11:30 AM  
 MATERIALS: Glass, Paper, Cans  
 SPONSOR: Public Works Dept.  
 CONTACT: Walter Durbas  
 (203) 236-3231

**WESTBROOK 06498**

METHOD: Recycling Center  
 LOCATION: Town Dump  
 SCHEDULE: Winter: 9 AM - Noon, 1 PM - 4 PM,  
 Summer: 9 AM - Noon, 1 PM - 5 PM  
 MATERIALS: Aluminum  
 SPONSOR: Land Conservation Trust  
 CONTACT: Mrs. R. L. Pratt  
 (203) 399-6836

**WESTBROOK**

METHOD: Curbside Collection  
 SCHEDULE: Monthly  
 MATERIALS: Glass  
 SPONSOR: Girl Scouts of America  
 CONTACT: Mrs. Lester Scott  
 (203) 399-9186

**WESTON 06883**

METHOD: Recycling Center  
 LOCATION: Landfill  
 SCHEDULE: Monday 9 AM - 4 PM,  
 Tues. - Fri. 8 AM - 4 PM,  
 Sat. 8 AM - 3 PM  
 MATERIALS: Paper  
 SPONSOR: Municipal  
 CONTACT: Town Engineer  
 (203) 226-4518

**WESTPORT 06880**

METHOD: Recycling Center  
 LOCATION: 100 Sherwood Island Connector  
 SCHEDULE: Mon. - Fri. 8 AM - 4 PM,  
 Sat. 8 - 11:30 AM  
 MATERIALS: Paper, Glass, Cans, Metal  
 SPONSOR: Public Works  
 CONTACT: Stanley G. Grzybowski  
 (203) 226-8311, Ext. 240

**WETHERSFIELD 06109**

METHOD: Recycling Center  
 LOCATION: Town Garage, Marsh St.  
 SCHEDULE: 7 Days, 24 Hours  
 MATERIALS: Glass, Bulky Metals  
 SPONSOR: Municipal  
 CONTACT: Peter LaDuca or Tom Dwyer  
 (203) 529-8611

**WINDSOR 06095**

METHOD: Recycling Center  
 LOCATION: Huckleberry Rd.  
 SCHEDULE: Mon. - Sat. 8 AM - 4:30 PM  
 MATERIALS: Glass, Tires, Scrap Metal  
 SPONSOR: Public Works Dept.  
 CONTACT: Joseph Korona  
 (203) 688-1819

**WILTON 06897**

METHOD: Recycling Center  
 LOCATION: Mather Street  
 SCHEDULE: Mon. - Fri. 8 AM - 4 PM,  
 Sat. 9 AM - Noon  
 MATERIALS: Paper, Glass, Cans  
 SPONSOR: Public Works Dept.  
 CONTACT: Norman J. Coutant, Jr.  
 (203) 762-8861

## MAINE

### BRUNSWICK 04011

METHOD: Recycling Center  
LOCATION: Industry Rd.  
SCHEDULE: Mon. - Fri. 7:30 AM - 3:30 PM  
MATERIALS: Paper  
SPONSOR: Public Works Dept.  
CONTACT: Herbert W. Watson  
(207) 729-3932

### BRUNSWICK

METHOD: Curbside Collection  
SCHEDULE: Weekly  
MATERIALS: Paper

### FARMINGTON 04938

METHOD: Recycling Center  
LOCATION: Landfill  
SCHEDULE: Sun. - Fri. 8:30 AM - 5 PM  
MATERIALS: Paper, Glass, Cans, Tires,  
White Goods, Scrap Metals  
SPONSOR: Town & Second Cycle  
CONTACT: James Le Furgy  
(207) 778-3525

### LINCOLN COUNTY

METHOD: Recycling Center  
LOCATION: Huntoon Hill Rd., Wiscasset, ME  
SCHEDULE: Mon. - Fri. 8 AM - 4 PM  
MATERIALS: Paper, Glass, Cans  
SPONSOR: Lincoln County  
CONTACT: Priscilla House  
(207) 882-6313

### ORONO 04473

METHOD: Recycling Center  
LOCATION: Bennoch Rd., Town Parking Lot  
SCHEDULE: 1st Sat. of Month, 9 AM - Noon  
MATERIALS: Paper  
SPONSOR: Orono Conservation Commission  
CONTACT: Lois Kutscha  
(207) 866-4887



## MASSACHUSETTS

### ACTON 01720

METHOD: Recycling Center  
LOCATION: Town Landfill  
SCHEDULE: Mon. - Sat. 8 AM - 4 PM  
MATERIALS: Paper, Glass, Cans  
SPONSOR: Acton Conservation Trust  
CONTACT: James Barnes  
(617) 263-2550

### AGAWAM 01001

METHOD: Curbside Collection  
SCHEDULE: Weekly  
MATERIALS: Paper  
SPONSOR: Agawam Youth Center  
CONTACT: Stan Lindh  
(617) 786-1280

### AMESBURY 01913

METHOD: Recycling Center  
LOCATION: Haverhill Rd., Rte. 110  
SCHEDULE: Sat. 8:30 AM - Noon  
MATERIALS: Glass, Cans  
SPONSOR: Amesbury Recycling Program  
CONTACT: Richard Nichols  
(617) 388-0937

### AMHERST 01002

METHOD: Recycling Center  
LOCATION: Landfill — Belchertown Rd.  
SCHEDULE: Mon. - Sat. 7:30 AM - 4 PM  
MATERIALS: Paper, Glass, Cans,  
Rags, Steel, Wood, Iron  
SPONSOR: Public Works Dept.  
CONTACT: Stanley P. Ziomek  
(413) 253-3355

### AMHERST

METHOD: Curbside Collection  
SCHEDULE: Monthly  
MATERIALS: Paper

### AMHERST

METHOD: Recycling Center  
LOCATION: Hampshire College  
SCHEDULE: 7 Days, 24 Hours  
MATERIALS: Paper, Glass, Cans  
SPONSOR: Responsible Ecology  
CONTACT: Lisa Berger  
(413) 549-4053 or 549-4600, Ext. 278

### ANDOVER 01810

METHOD: Curbside Collection  
SCHEDULE: Weekly  
MATERIALS: Paper, Glass, Cans  
SPONSOR: Town  
CONTACT: John J. Lewis  
(617) 475-5864

### ARLINGTON 02174

METHOD: Recycling Center  
LOCATION: 51 Grove St.  
SCHEDULE: 7 Days, 24 Hours  
MATERIALS: Paper  
SPONSOR: Public Works Dept.  
CONTACT: Raymond A. Ouellette  
(617) 643-6700, Ext. 239

### ARLINGTON

METHOD: Curbside Collection  
SCHEDULE: Monthly  
MATERIALS: Paper

### BARNSTABLE 02630

METHOD: Recycling Center  
LOCATION: Barnstable Disposal Area,  
Marstons Mills  
SCHEDULE: Mon. - Sat. 7:30 AM - 4 PM  
MATERIALS: Paper, Glass, Aluminum,  
Cans, Heavy Metals  
SPONSOR: Barnstable Recycling Committee  
CONTACT: Jane Eshbaugh  
(617) 775-1120

### BEDFORD 01730

METHOD: Curbside Collection  
SCHEDULE: Weekly  
MATERIALS: Paper, Glass, Cans  
SPONSOR: Public Works  
CONTACT: (617) 275-7605

### BELMONT 02178

METHOD: Recycling Center  
LOCATION: Concord Ave.  
SCHEDULE: Mon. - Fri. 8 AM - 5 PM,  
Sat. 9 AM - 1 PM  
SPONSOR: Highway Dept.  
CONTACT: Curtis Woodfall  
(617) 484-2300

**BOXBOROUGH 01719**

METHOD: Recycling Center  
 LOCATION: Town Dump, Codman Hill Road  
 SCHEDULE: Sat. 8:30 AM - 4 PM  
 MATERIALS: Paper, Glass, Cans  
 SPONSOR: Recycling Advisory Committee  
 CONTACT: Margaret B. Macek  
 (617) 263-2088

**BRAINTREE 02184**

METHOD: Curbside Collection  
 SCHEDULE: Bi-weekly  
 MATERIALS: Paper, Glass, Cans, Aluminum  
 CONTACT: William T. Willoughby  
 (617) 843-5296

**BREWSTER 02631**

METHOD: Recycling Center  
 LOCATION: 1708 Main St.  
 SCHEDULE: 8 AM - 4 PM Daily,  
 except Tues. and Wed.  
 MATERIALS: Paper, Glass  
 SPONSOR: Public Works Dept.  
 CONTACT: Dennis D. Hanson  
 (617) 896-3212

**BROOKLINE 01506**

METHOD: Recycling Center  
 LOCATION: 850 Newton St.  
 SCHEDULE: 8 AM - 3:30 PM  
 MATERIALS: Paper, Glass, Cans, Bulky Metals  
 SPONSOR: Department of Public Works  
 CONTACT: Leo D. Picardi  
 (617) 232-9000, Ext. 265

**BROOKLINE**

METHOD: Curbside Collection  
 SCHEDULE: Weekly  
 MATERIALS: Paper, Glass

**CARLISLE 01741**

METHOD: Recycling Center  
 LOCATION: Lowell St.  
 SCHEDULE: Tues. & Thurs. 10 AM - 7 PM,  
 Sat. 8 AM - 5 PM  
 MATERIALS: Newspapers, Glass, Cans, Cardboard  
 SPONSOR: Board of Health  
 CONTACT: Mrs. Patricia Cutter  
 (617) 369-6136

**CHARLESTOWN 02129**

METHOD: Recycling Center  
 LOCATION: 2 Pearl St.  
 MATERIALS: Office Paper, Newspaper  
 SPONSOR: Metro Ecology Workshop  
 CONTACT: Richard Wimberly  
 (617) 242-2862 or 266-5675

**CHELMSFORD 01824**

METHOD: Curbside Collection  
 SCHEDULE: Weekly  
 MATERIALS: Paper, Glass, Cans  
 SPONSOR: Board of Selectmen  
 CONTACT: Arnold J. Lovering

**CHELSEA 02150**

METHOD: Curbside Collection  
 LOCATION: 60 Warren Ave.  
 SCHEDULE: Weekly  
 MATERIALS: Metals  
 SPONSOR: H. Freedman & Sons  
 CONTACT: Harry Freedman  
 (617) 889-0689

**CHESHIRE 01225**

METHOD: Recycling Center  
 LOCATION: Town Hall  
 SCHEDULE: Tues. 8 - 9:30 PM  
 MATERIALS: Paper, Glass, Bulky Metals  
 SPONSOR: Board of Health  
 CONTACT: Carol Balawendu, (617) 743-2805  
 Fred Martin, (617) 743-2805

**COHASSET 02025**

METHOD: Recycling Center  
 LOCATION: Cedar Street  
 SCHEDULE: Daily 8:30 AM - 4 PM, Closed Tues.  
 MATERIALS: Paper, Glass, Cans  
 SPONSOR: Board of Health  
 CONTACT: Kevin O'Brien  
 (617) 383-1664

**CONCORD 01742**

METHOD: Recycling Center  
 LOCATION: Landfill, Rt. 126 at Rt. 2  
 SCHEDULE: Mon., Tues., Thurs., Fri., Sat.  
 8:30 AM - 4:30 PM,  
 Wed. 12 PM - 4:30 PM  
 MATERIALS: Paper, Glass, Cans  
 SPONSOR: Reusit, Inc.  
 CONTACT: Winifred S. Ferguson  
 (617) 369-6396

**DARTMOUTH 02714**

METHOD: Recycling Center  
LOCATION: 976 Russels Mills  
SCHEDULE: Mon., Wed., Thurs., Fri. 7 AM-3:15 PM,  
Tues. and Sat. 7 AM-4:15 PM  
MATERIALS: Paper, Glass, Bulky Metals  
SPONSOR: Dept. of Public Works  
CONTACT: Manuel Branco  
(617) 999-5265

**DARTMOUTH**

METHOD: Curbside Collection  
SCHEDULE: Weekly  
MATERIALS: Paper

**DEDHAM 02026**

METHOD: Recycling Center  
LOCATION: Incinerator Road  
SCHEDULE: Mon. - Fri. 8 AM - 4 PM,  
Sat. 8 AM - Noon  
MATERIALS: Paper, Glass, Cans  
SPONSOR: Resource Recovery Comm. and  
Dept. of Public Works  
CONTACT: Susan E. Hurley  
(617) 326-3695

**DENNIS 02660**

METHOD: Recycling Center  
LOCATION: T. Smith Rd.  
SCHEDULE: 7 Days, 7:30 AM - 4 PM (Winter),  
7:30 AM - 7:30 PM (Summer)  
MATERIALS: Paper, Glass, Cans, Heavy Metals  
SPONSOR: Dennis Recycling  
CONTACT: Mary Hagler  
(617) 394-0907

**DUXBURY 02332**

METHOD: Recycling Center  
LOCATION: Mayflower St.  
SCHEDULE: Wed. - Sun. 8 AM - 4 PM  
MATERIALS: Paper, Glass, Bulky Metals  
SPONSOR: Municipal  
CONTACT: Peter Grealy  
(617) 934-0255

**EASTHAM 04642**

METHOD: Recycling Center  
LOCATION: Pine Crest Rd.  
SCHEDULE: Daily 7:30 AM - 4:30 PM  
MATERIALS: Paper, Glass, Cans, Aluminum,  
Bulky Metals  
SPONSOR: Eastham Recycling Committee  
CONTACT: Mrs. Herbert Whitlock  
(617) 255-0388

**FALMOUTH 02556**

METHOD: Recycling Center  
LOCATION: Disposal Area, Thomas Landers Rd.  
SCHEDULE: Mon. - Sat. 8 AM - 5 PM,  
Sun. 1 - 5 PM  
MATERIALS: Paper, Glass, Cotton Rags, Cans  
SPONSOR: Recycling Committee  
CONTACT: Virginia Valiela  
(617) 563-9028

**FITCHBURG 01420**

METHOD: Curbside Collection  
LOCATION: 718 Main St.  
SCHEDULE: Monthly  
MATERIALS: Bulky Metals  
SPONSOR: Public Works Dept.  
CONTACT: (617) 342-2007

**FOXBOROUGH 02035**

METHOD: Recycling Center  
LOCATION: Sanitary Landfill  
MATERIALS: Paper, Glass, Metals  
SPONSOR: Highway Dept.  
CONTACT: Louis A. Truax  
(617) 543-4848

**GRANBY 01033**

METHOD: Recycling Center  
LOCATION: Landfill, New Ludlow Rd.  
SCHEDULE: Mon. - Sat. 6:30 AM - 4:30 PM  
MATERIALS: Paper  
SPONSOR: Granby P.M. Club  
CONTACT: Mrs. Joseph Snopek

**GREENFIELD 01301**

METHOD: Recycling Center  
LOCATION: Town Hall  
SCHEDULE: Daily 8 AM - 4 PM  
MATERIALS: Paper, Glass, Cans  
SPONSOR: DPW & Greenfield Recycling Comm.  
CONTACT: Mrs. Jean B. Cummings  
(413) 773-7045

**GREENFIELD**

METHOD: Curbside Collection  
SCHEDULE: Monthly  
MATERIALS: Paper

**HAMPDEN 01036**

METHOD: Recycling Center  
 LOCATION: Landfill, Cross Road  
 SCHEDULE: Tues. Noon - 6 PM, Sat. 9 AM - 6 PM  
 MATERIALS: Paper, Glass, Aluminum  
 SPONSOR: Hampden Recycling Center  
 CONTACT: Dale Sherman  
 (413) 566-8554

**HANOVER 02339**

METHOD: Recycling Center  
 LOCATION: Rockland Street  
 SCHEDULE: Tues. - Sun. 9 AM - 6 PM  
 MATERIALS: Paper, Glass, Cans, Bulky Metal  
 SPONSOR: Board of Health  
 CONTACT: Albert E. Sullivan  
 (617) 826-4611

**HAVERHILL 01830**

METHOD: Curbside Collection  
 MATERIALS: Paper  
 SPONSOR: Haverhill Conservation Corps  
 CONTACT: Bob Gariepy  
 (617) 373-9295

**HINGHAM 02043**

METHOD: Recycling Center  
 LOCATION: Hobart St.  
 SCHEDULE: Daily 7:30 AM - 4:30 PM  
 MATERIALS: Paper, Glass  
 SPONSOR: Department of Highways  
 CONTACT: H. A. Cole, III  
 (617) 749-1300

**IPSWICH 01938**

METHOD: Recycling Center  
 LOCATION: Solid Waste Transfer Station,  
 Town Farm Road  
 SCHEDULE: Wed. - Sun. 8 AM - 4 PM  
 MATERIALS: Paper, Glass, Cans  
 SPONSOR: Board of Health  
 CONTACT: Deborah Johnson Stone  
 (617) 356-4900

**LEXINGTON 02173**

METHOD: Recycling Center  
 LOCATION: Landfill — Hartwell Avenue  
 SCHEDULE: 8 AM - 5 PM, Closed Wed.  
 MATERIALS: Paper, Glass, Cans, Bulky Metals  
 SPONSOR: Public Works Dept.  
 CONTACT: Warren Empey  
 (617) 862-0500

**LEXINGTON**

METHOD: Curbside Collection  
 SCHEDULE: Weekly  
 MATERIALS: Paper, Glass, Cans

**LINCOLN 01773**

METHOD: Recycling Center  
 LOCATION: Landfill, Rt. 2A, North Lincoln  
 SCHEDULE: Mon., Wed., Fri., Sat. 8:30 AM - 4 PM  
 MATERIALS: Paper, Glass, Cans  
 SPONSOR: Landfill Operator  
 CONTACT: Robert Dubreuil  
 (617) 890-0279

**LITTLETON 01460**

METHOD: Curbside Collection  
 MATERIALS: Paper, Glass  
 SPONSOR: Littleton Board of Health  
 CONTACT: (617) 486-8906

**LUDLOW 01056**

METHOD: Recycling Center  
 LOCATION: Holyoke St.  
 SCHEDULE: 7 AM - 4:30 PM  
 MATERIALS: Paper, Glass, Cans, Aluminum  
 SPONSOR: Municipal  
 CONTACT: Richard Mainville  
 (413) 583-6335

**LUDLOW**

METHOD: Curbside Collection  
 SCHEDULE: Bi-weekly  
 MATERIALS: Paper, Glass, Cans

**MANCHESTER 01944**

METHOD: Recycling Center  
 LOCATION: Means Shopping Center  
 SCHEDULE: Winter: Last Sat. of Month 10AM-2PM  
 Summer: Last Fri. of Month 4PM-8PM  
 MATERIALS: Paper, Glass, Cans, Bulky Metals  
 SPONSOR: Board of Health  
 CONTACT: Moses W. Ware  
 (617) 526-1563

**MARBLEHEAD 01945**

METHOD: Recycling Center  
 LOCATION: Disposal Area — Off Green St.  
 SCHEDULE: Mon. - Sat. 8 AM - 4 PM  
 MATERIALS: Paper, Glass, Cans  
 SPONSOR: Health Dept.  
 CONTACT: Raymond A. Reed  
 (617) 631-0212

**MARBLEHEAD**

METHOD: Curbside Collection  
 SCHEDULE: Weekly  
 MATERIALS: Paper, Glass, Cans  
 SPONSOR: Health Dept.  
 CONTACT: Raymond A. Reed  
 (617) 631-0212

**MATTAPOISETT 02739**

METHOD: Recycling Center  
 LOCATION: Town Parking Lot, Depot St.  
 SCHEDULE: First Weekend each Month,  
 Daylight Hours  
 MATERIALS: Paper  
 SPONSOR: Republican Town Committee  
 CONTACT: Lois Knight Ennis  
 (617) 758-2188

**MAYNARD 01754**

METHOD: Recycling Center  
 LOCATION: Landfill, Waltham St.  
 SCHEDULE: Call for Hours  
 MATERIALS: Paper, Glass, Cans  
 SPONSOR: Sanitary Landfill Committee  
 CONTACT: Thomas J. Sheridan  
 (617) 897-3316

**NATICK 01760**

METHOD: Recycling Center  
 LOCATION: Town Dump  
 SCHEDULE: Call for Hours  
 MATERIALS: Cans, Metals  
 SPONSOR: Public Works Dept.  
 (617) 653-2710

**NATICK**

METHOD: Recycling Center  
 LOCATION: 14 Mill Street  
 SCHEDULE: 7 Days, 24 Hours  
 MATERIALS: Glass  
 SPONSOR: Bostonia Beverages  
 CONTACT: Gary Hoyt  
 (617) 655-5550

**NEEDHAM 02192**

METHOD: Recycling Center  
 LOCATION: Central Ave., Disposal Area  
 SCHEDULE: Call for Hours  
 MATERIALS: Paper, Glass, Cans  
 SPONSOR: Dept. of Public Works  
 CONTACT: Robert J. Lanigan  
 (617) 444-5100

**NORTH ADAMS 01247**

METHOD: Recycling Center  
 LOCATION: Town Dump, College Campus,  
 Activity Center  
 MATERIALS: Aluminum  
 SPONSOR: Northern Berkshire Assn. for  
 Retarded Citizens  
 CONTACT: William Conti

**NORTH ANDOVER 01845**

METHOD: Recycling Center  
 MATERIALS: Paper, Glass  
 SPONSOR: Highway Dept.  
 CONTACT: William A. Cyr  
 (617) 685-0950

**NORTH ANDOVER**

METHOD: Curbside Collection  
 SCHEDULE: Monthly  
 MATERIALS: Paper, Bulky Metals

**NORTHAMPTON 01060**

METHOD: Recycling Center  
 LOCATION: 125 Locust St.  
 SCHEDULE: Mon. - Fri. 6 AM - 8 PM,  
 Sat. 6 AM - 4 PM  
 MATERIALS: Paper, Glass, Cans  
 SPONSOR: Public Works Dept.  
 CONTACT: Francis P. Ryan  
 (413) 584-2025 or 584-2028

**ORLEANS 02653**

METHOD: Recycling Center  
 LOCATION: Disposal Area  
 SCHEDULE: 7 Days, 7:30 AM - 5:30 PM  
 MATERIALS: Paper, Glass  
 SPONSOR: Board of Selectmen  
 CONTACT: M. Eleanor Bennison  
 (617) 255-0900

**PAXTON 01612**

METHOD: Recycling Center  
 LOCATION: 576 Pleasant St.,  
 Fire Station Parking Lot  
 SCHEDULE: Daylight Hours  
 MATERIALS: Glass  
 SPONSOR: Paxton Municipal Light Dept.  
 CONTACT: Harold L. Smith  
 (617) 756-9508

**PEMBROKE 02359**

METHOD: Recycling Center  
 LOCATION: Center St.  
 SCHEDULE: Daily 9 AM - 3 PM  
 MATERIALS: Paper  
 SPONSOR: Board of Health  
 CONTACT: (617) 293-2718

**PETERSHAM 01366**

METHOD: Curbside Collection  
 SCHEDULE: Weekly  
 MATERIALS: Paper, Glass, Bulky Metals  
 SPONSOR: Selectmen  
 CONTACT: M. V. Joy  
 (617) 724-3353

**PRINCETON 01541**

METHOD: Curbside Collection  
 SCHEDULE: Weekly  
 MATERIALS: Paper, Glass, Heavy Metals  
 CONTACT: Robert B. Mason  
 (617) 464-2775

**RAYNHAM 02767**

METHOD: Recycling Center  
 LOCATION: 1555 King Phillip St.  
 SCHEDULE: Mon. - Sat. 7 AM - 5 PM,  
 Sun. 7 AM - Noon  
 MATERIALS: Paper, Glass  
 SPONSOR: Highway Dept.  
 CONTACT: Edward Murby  
 (617) 823-6141

**READING 01867**

METHOD: Recycling Center  
 MATERIALS: Paper, Glass, Bulky Metals  
 SPONSOR: Browning Ferris Industries  
 CONTACT: William R. Bergeron  
 (617) 942-0500, Ext. 35, 36, 37

**READING**

METHOD: Curbside Collection  
 SCHEDULE: Weekly  
 MATERIALS: Paper, Glass, Cans

**ROCKPORT 01966**

METHOD: Recycling Center  
 LOCATION: Town Landfill  
 SCHEDULE: Mon. - Fri. 7:30 AM - 11:30 AM,  
 12:30 PM - 3:30 PM,  
 Sat. 7:30 AM - 4 PM  
 MATERIALS: Paper, Cans, Glass, Bulky Metals  
 SPONSOR: Rockport Ecology  
 CONTACT: Ms. Ann Fisk  
 (617) 546-2789

**SCITUATE 02060**

METHOD: Recycling Center  
 LOCATION: Landfill  
 SCHEDULE: Wed. - Mon. 8:30 AM - 3:30 PM  
 MATERIALS: Paper, Glass, Cans, Motor Oil,  
 White Goods, Tires  
 SPONSOR: Scituate Environment Effort  
 CONTACT: Gary M. Banks  
 (617) 545-1690

**SHARON 02067**

METHOD: Recycling Center  
 LOCATION: Highway Garage, 215 So. Main St.  
 SCHEDULE: 7 Days, 24 Hours  
 MATERIALS: Paper, Glass, Cans  
 SPONSOR: Dept. of Public Works

LOCATION: Solid Waste Area  
 SCHEDULE: Tues. - Sat. 8 AM - 5 PM  
 MATERIALS: Paper, Glass, Cans, Metals

**SHEFFIELD 01257**

METHOD: Recycling Center  
 LOCATION: Highway Garage  
 SCHEDULE: 7 Days, 24 Hours  
 MATERIALS: Paper, Aluminum, Glass  
 SPONSOR: Recycling Committee  
 CONTACT: S. Armentrout  
 (413) 229-6606

**SOMERVILLE 02145**

METHOD: Curbside Collection  
 SCHEDULE: Weekly  
 MATERIALS: Paper  
 SPONSOR: Department of Public Works  
 CONTACT: (617) 666-2959

**SOMERVILLE**

METHOD: Recycling Center  
 LOCATION: Franey Road  
 SCHEDULE: Daily 8:30 AM - 4:30 PM  
 MATERIALS: Paper  
 SPONSOR: Department of Public Works  
 CONTACT: (617) 666-2959

**SOUTH HADLEY 01075**

METHOD: Curbside Collection  
 SCHEDULE: Bi-weekly  
 MATERIALS: Paper, Glass, Aluminum  
 SPONSOR: Norman G. Darcy  
 CONTACT: George E. Daviau, Sr.  
 (413) 536-6146

**SPRINGFIELD 01108**

METHOD: Recycling Center  
 LOCATION: 285 Dorset St.  
 SCHEDULE: 7 Days, 24 Hours  
 MATERIALS: Glass, Cans, Newspaper, Aluminum, Cardboard, Computer Cards  
 SPONSOR: Goodwill Recycling Center  
 CONTACT: Charles Shook  
 (413) 788-6981

**TOPSFIELD 01983**

METHOD: Curbside Collection  
 SCHEDULE: Monthly  
 MATERIALS: Paper, Glass, Cans  
 SPONSOR: Conservation Commission  
 CONTACT: Dorothy T. Wass, (617) 887-5715  
 Jean Shephard, (617) 887-8001

**WATERTOWN 02172**

METHOD: Recycling Center  
 LOCATION: 360 Pleasant St.  
 SCHEDULE: Mon. - Fri. 8:30 AM - 2 PM,  
 Sat. 9 - 11 AM  
 MATERIALS: Paper, Glass, Cans  
 SPONSOR: H. L. Roiter Co.  
 CONTACT: Harry L. Roiter  
 (617) 923-1440

**WELLESLEY 02181**

METHOD: Recycling Center  
 LOCATION: Route 135  
 SCHEDULE: Mon. - Sat. 7 AM - 5 PM  
 MATERIALS: Paper, Glass, Cans  
 SPONSOR: Municipal  
 CONTACT: (617) 235-7600, Ext. 30

**WELLFLEET**

METHOD: Recycling Center  
 LOCATION: Town Disposal Area  
 SCHEDULE: 7 Days, 8 AM - 4 PM  
 MATERIALS: Glass  
 SPONSOR: Town Recycling Committee

**WEST BOYLSTON 01583**

METHOD: Recycling Center  
 LOCATION: Rte. 140, Landfill  
 SCHEDULE: Tues. - Fri. 7:30 AM - 3 PM,  
 Sat. 8 AM - 4 PM  
 MATERIALS: Paper, Glass, Cans  
 SPONSOR: Municipal  
 CONTACT: Clifford Cummings, Sr.  
 (617) 835-6091

**WESTBORO 01581**

METHOD: Recycling Center  
 LOCATION: Hopkinton Rd.  
 SCHEDULE: Mon. - Sat. 8 AM - 5 PM  
 MATERIALS: Paper, Glass  
 SPONSOR: Municipal  
 CONTACT: James Harvey or Bob Harvey  
 (617) 366-4123

**WESTFORD 01886**

METHOD: Recycling Center  
 LOCATION: Coldspring Rd.  
 SCHEDULE: Daily 7 AM - 3 PM,  
 Closed Tues. & Sun.  
 MATERIALS: Paper, Glass, Cans  
 SPONSOR: Highway Dept.  
 CONTACT: Janice Ackerman  
 (617) 692-7946

**WESTWOOD 02090**

METHOD: Recycling Center  
 LOCATION: Carby St. (near Town Highway Garage)  
 SCHEDULE: 7 Days, 24 Hours  
 MATERIALS: Paper  
 SPONSOR: League of Women Voters  
 CONTACT: Mrs. Audrey Robb  
 (617) 329-2691

**WEYMOUTH 02188**

METHOD: Recycling Center  
 LOCATION: 94 Wharf St.  
 SCHEDULE: Mon. - Fri. 8 AM - 3:30 PM  
 MATERIALS: Paper, Bulky Metals  
 SPONSOR: Recycling Committee  
 CONTACT: Francis E. Lenihan  
 (617) 337-5100, Ext. 16

**WEYMOUTH**

METHOD: Curbside Collection  
SCHEDULE: Monthly  
MATERIALS: Paper, Glass, Bulky Metals  
SPONSOR: Recycling Committee  
CONTACT: Francis E. Lenihan  
(617) 337-5100, Ext. 16

**WILLIAMSTOWN 01267**

METHOD: Recycling Center  
LOCATION: Water Street  
SCHEDULE: 7 Days, 24 Hours  
MATERIALS: Paper, Glass, Cans  
SPONSOR: Conservation Commission  
CONTACT: M. Shay  
(413) 743-4135

**WILLIAMSTOWN**

METHOD: Curbside Collection  
SCHEDULE: Weekly  
MATERIALS: Paper, Glass, Cans

**WOBBURN 01801**

METHOD: Recycling Center  
LOCATION: Woburn Landfill, Merrimac St.  
SCHEDULE: Mon. - Fri. 8 AM - 4 PM,  
Sat. 8 AM - Noon  
MATERIALS: Paper, Glass  
SPONSOR: Board of Health  
CONTACT: Edwin Walkur  
(617) 933-0700

**WORCESTER 01603**

METHOD: Recycling Center  
LOCATION: 40 Walcott St.  
SCHEDULE: Mon. - Fri. 8 AM - 5 PM,  
Sat. 8 AM - 1 PM  
MATERIALS: Glass  
SPONSOR: Polar Corp.  
CONTACT: Dennis M. Crowley  
(617) 753-6383

**WORTHINGTON 01098**

METHOD: Recycling Center  
LOCATION: Huntington Rd.  
SCHEDULE: Wed. 12 - 4 PM, Sat. 8 AM - 4 PM  
Sun. 8 AM - Noon  
MATERIALS: Paper  
SPONSOR: Municipal  
CONTACT: Albert Nugent, Jr.  
(413) 238-5815

**YARMOUTH 02673**

METHOD: Recycling Center  
LOCATION: Landfill — 600 Forest Road  
SCHEDULE: 7 Days, 8 AM - 4:15 PM  
MATERIALS: Glass, Aluminum, Paper, Cans,  
White Goods  
SPONSOR: Sanitation Dept.  
CONTACT: Peter G. Homer  
(617) 394-1284



## NEW HAMPSHIRE

### ANTRIM 03440

METHOD: Recycling Center  
LOCATION: Landfill  
SCHEDULE: Sun. - Fri. 1 - 5 PM, Sat. 9 AM - 5 PM  
MATERIALS: Cans  
SPONSOR: Women's Club  
CONTACT: Evelyn F. Perry  
(603) 588-2113

### DURHAM 03824

METHOD: Recycling Center  
LOCATION: Service Dept. Bldg.  
SCHEDULE: Mon. - Fri. 7 AM - 3:30 PM,  
Sat. 9 AM - 3 PM  
MATERIALS: Paper, Glass, Cans, Light Metals  
SPONSOR: University of New Hampshire  
CONTACT: Henry Dozier  
(603) 862-1420

### HAMPTON 03842

METHOD: Curbside Collection  
SCHEDULE: Weekly, Bi-weekly in Summer  
MATERIALS: Paper, Glass, Cans  
SPONSOR: Public Works Dept.  
CONTACT: George F. Hardardt  
(603) 926-6766

### HANOVER 03755

METHOD: Recycling Center  
LOCATION: Rte. 120  
SCHEDULE: 7 Days, 24 Hours  
MATERIALS: Paper, Glass  
SPONSOR: Waste Control System  
CONTACT: Noel J. Vincent  
(802) 295-5520

### LEBANON 03784

METHOD: Recycling Center  
LOCATION: Plainfield Rd., W. Lebanon  
SCHEDULE: 7 Days, 24 Hours  
MATERIALS: Paper, Glass, Cans  
SPONSOR: Waste Control System,  
White River Junction, VT  
CONTACT: Noel J. Vincent  
(802) 295-2660 or 295-9610

### MEREDITH 03253

METHOD: Recycling Center  
LOCATION: Jenness Hill Rd.  
SCHEDULE: Mon. - Fri. 9 AM - 4 PM, Closed Wed.,  
Sat. and Sun. 8 AM - 4 PM  
MATERIALS: Paper, Glass, Tires, Heavy Metals  
SPONSOR: Refuse Disposal Facility  
CONTACT: Mark S. Haynes  
(603) 279-8407

### PLYMOUTH 03264

METHOD: Recycling Center  
LOCATION: Beech Hill Rd., Town Incinerator  
SCHEDULE: Mon. - Fri. 8 AM - 5 PM,  
Wed., Sat. & Sun. 8 AM - Noon  
MATERIALS: Paper, Glass, Cans  
SPONSOR: Public Works Dept.  
CONTACT: Joel E. Barrey  
(603) 536-2075

### SWANZEY 03469

METHOD: Recycling Center  
LOCATION: Pine St., W. Swanzey  
SCHEDULE: Tues., Thurs., Sat. 8 AM - 6 PM  
MATERIALS: Paper, Glass, Cans  
SPONSOR: Recycling Center  
CONTACT: Carl Walden  
(603) 352-7116

### WINDHAM 03087

METHOD: Recycling Center  
LOCATION: Marblehead Rd.  
SCHEDULE: Mon. 11 AM - 7 PM,  
Thurs., Fri., Sat. 9 AM - 5 PM  
MATERIALS: Paper, Glass, Metal  
SPONSOR: Town  
CONTACT: Wayne K. Holm  
(603) 893-9447

## **RHODE ISLAND**

### **BARRINGTON 02806**

METHOD: Recycling Center  
LOCATION: 84 Upland Way  
SCHEDULE: 7 Days, 24 Hours  
MATERIALS: Paper, Glass, Cans, White Goods,  
Bulky Metals  
SPONSOR: Public Works Dept.  
CONTACT: Rick Fressilli  
(401) 245-0417

### **BARRINGTON**

METHOD: Curbside Collection  
SCHEDULE: Monthly  
MATERIALS: Paper

### **GLOCESTER 02814**

METHOD: Recycling Center  
LOCATION: Chestnut Hill Rd., Chepocket  
SCHEDULE: 9 AM - 5 PM  
MATERIALS: Glass, Paper  
SPONSOR: Highway Dept.  
CONTACT: Clinton Gustafson  
(401) 568-5540

### **LITTLE COMPTON 02837**

METHOD: Recycling Center  
LOCATION: Little Compton Transfer Station  
SCHEDULE: Call for Hours  
MATERIALS: Glass, Paper, Bulky Metals  
SPONSOR: Manchester & Harrington, Inc.  
CONTACT: Gerald Harrington, Jr.  
(401) 635-4602

### **PAWTUCKET 02860**

METHOD: Recycling Center  
LOCATION: 130 Grotto Ave.  
SCHEDULE: Mon. - Fri. 8 AM - 4:30 PM  
MATERIALS: Paper  
SPONSOR: Coca-Cola Bottling Co.

### **SOUTH KINGSTOWN 02879**

METHOD: Recycling Center  
LOCATION: Rose Hill Road, Peace Dale  
SCHEDULE: 8 AM - 4 PM  
MATERIALS: Paper, Glass  
SPONSOR: Town of South Kingstown  
CONTACT: Mr. Thomas DiPietro  
(401) 789-9331

### **WOONSOCKET 02895**

METHOD: Recycling Center  
LOCATION: Davison Street  
SCHEDULE: Mon. - Fri. 8 AM - 4 PM,  
Sat. 8 AM - Noon  
MATERIALS: Paper, Glass, Cans  
SPONSOR: Public Works Dept.  
CONTACT: John Allard  
(401) 762-4480

## VERMONT

### BENNINGTON 05201

METHOD: Recycling Center  
LOCATION: Pleasant St.  
SCHEDULE: 7 Days, 24 Hours  
MATERIALS: Paper, Glass, Cans  
SPONSOR: Redemption Center and  
Recycling Committee  
CONTACT: Rick Wright, (802) 442-6900  
Lucia Howard, (802) 442-5125

### BURLINGTON 05401

METHOD: Recycling Center  
LOCATION: 111 Archibald St.  
SCHEDULE: Mon. - Fri. 7:30 AM - 5 PM  
MATERIALS: Paper  
SPONSOR: Burlington Paper Stock  
CONTACT: Frederick Hirsch  
(802) 862-9641

### BURLINGTON

METHOD: Recycling Center  
LOCATION: 255-257 N. Winooski Ave.  
SCHEDULE: Mon. - Fri. 7 AM - Noon, 1 PM - 5 PM  
MATERIALS: Paper, Aluminum Cans, Ferrous  
and Non-ferrous Metals  
SPONSOR: Burlington Waste & Metal Co.  
CONTACT: Howard Klubosteln  
(802) 862-5335

### SHRAFTSBURY 05262

METHOD: Recycling Center  
LOCATION: Landfill — North Road  
SCHEDULE: Tues. & Thurs. 12:30 PM - 5 PM,  
Sat. 8 AM - 4 PM, Sun. 8 - 11 AM  
MATERIALS: Paper  
SPONSOR: Boy Scouts, Troop 331  
CONTACT: Mr. Eugene Kosche  
(802) 442-5539

### SHRAFTSBURY

METHOD: Curbside Collection  
SCHEDULE: Weekly  
MATERIALS: Paper

### WOODSTOCK 05091

METHOD: Recycling Center  
LOCATION: Pleasant St., Behind Poma Warehouse  
SCHEDULE: 7 Days, 24 Hours  
MATERIALS: Glass, Aluminum  
SPONSOR: Re Du Center  
CONTACT: Frank H. Teagle, Jr.  
(802) 457-2228

### WOODSTOCK

METHOD: Recycling Center  
LOCATION: Woodstock Road  
SCHEDULE: 7 Days, 24 Hours  
MATERIALS: Paper, Glass, Cans, Bulky Metals  
SPONSOR: Noel Vincent Trucking, Inc.  
CONTACT: Noel Vincent  
(802) 295-2660 or 295-9610

## **MARKETS FOR RECYCLED MATERIAL IN NEW ENGLAND**

Following is a listing of the names and addresses (and where available, the phone numbers) of markets for recycled paper, glass, and metal that EPA is currently aware of for New England. As stated earlier, this list is not complete and other sources should be referenced if necessary.

Before your recycling program begins accepting materials, be sure to check with your buyer to ensure that the materials you collect meet the buyers specifications. For example metal rings may have to be removed from bottles or glass may have to be separated by color.

# LEGEND

## MATERIAL TYPES

## CONTRIBUTORS

| Paper                     | Glass             | Metals                    |                           |
|---------------------------|-------------------|---------------------------|---------------------------|
| N . . . . . Newsprint     | C . . . . . Clear | F . . . . . Ferrous       | I . . . . . Individuals   |
| C . . . . . Corrugated    | G . . . . . Green | N-F . . . . . Non-Ferrous | O . . . . . Organizations |
| L . . . . . Office Ledger | A . . . . . Amber | B . . . . . Bulky Metals  | C . . . . . Contractors   |
| M . . . . . Mixed Paper   |                   | M . . . . . Mixed Metals  |                           |
| O . . . . . Other         |                   | S . . . . . Scrap Metals  |                           |

| COMPANY NAME AND ADDRESS  | MATERIALS<br>ACCEPTED    | MATERIAL<br>TYPES<br>(see legend) | ACCEPTS<br>MATERIAL<br>FROM<br>(see legend) | PICK-UP<br>AVAILABLE | CONTAINERS<br>PROVIDED | CONTRACT<br>AVAILABLE |
|---|--------------------------|-----------------------------------|---|----------------------|------------------------|-----------------------|
| <b>CONNECTICUT</b>  |                          |                                   |   |                      |                        |                       |
| Tri-City Recycling<br>655 Christian Lane<br>Berlin, 06037<br>(203) 223-3601                           | Paper                    | N C L M O                         | I O C                                       | YES                  | YES                    | YES                   |
| Atlas Scrap & Recycling Co.<br>P. O. Box 624<br>Bloomfield, 06002<br>(203) 242-6251                   | Paper<br>Glass<br>Metals | N C L M O<br>F N-F B M S          | I O C<br>I O C<br>I O C                     | YES<br>NO<br>YES     | YES<br>YES<br>YES      | YES                   |
| Southern CT Resource Recovery<br>Center, Inc.<br>50 Maple Street<br>Branford, 06405<br>(203) 481-2325 | Glass<br>Metals          | F N-F                             | O C<br>O C                                  | YES<br>YES           | YES<br>YES             | YES                   |
| Glass Containers Corp.<br>Route 101<br>Dayville, 06241<br>(203) 774-9636                              | Glass                    |                                   | I O C                                       | NO                   | NO                     | YES                   |
| Camerota Scrap Recycling<br>245 Shaker Road<br>Enfield, 06082<br>(203) 763-0436                       | Metals                   | F N-F B S                         | I O C                                       | YES                  | YES                    |                       |

| COMPANY NAME AND ADDRESS  | MATERIALS<br>ACCEPTED | MATERIAL<br>TYPES<br>(see legend) | ACCEPTS<br>MATERIAL<br>FROM<br>(see legend) | PICK-UP<br>AVAILABLE | CONTAINERS<br>PROVIDED | CONTRACT<br>AVAILABLE |
|---|-----------------------|-----------------------------------|---|----------------------|------------------------|-----------------------|
| Columbia Poly Pack Co.<br>15 Ashton Street<br>Hartford, 06106<br>(203) 522-4943 or 1-800-842-1456 | Paper                 | N                                 | I O C                                       | YES                  | YES                    | YES                   |
| Automated Material Handling<br>260 Tolland Turnpike<br>Manchester, 06040<br>(203) 643-9636        | Paper<br>Metals       | N C L M<br>B M                    | C   | YES<br>YES           | YES<br>YES             | YES                   |
| M. Wilder & Son, Inc.<br>569 North Colony Street<br>Meriden, 06450<br>(203) 235-4225              | Paper<br>Metals       | N C L M O<br>F N-F S              | I O C<br>I O C                              | YES<br>YES           | NO<br>NO               | YES                   |
| E. H. Wentworth<br>221 Faith Road<br>Newington, 06111<br>(203) 667-0644                           | Metals                | F B M S                           | I O C                                       | YES                  | YES                    |                       |
| Vulcan Scrap Metal Co.<br>60 Taff Avenue<br>Stamford, 06905<br>(203) 357-1720                     | Metals                | F N-F S                           | I O C                                       | YES                  | YES                    |                       |
| Data Security Corp.<br>9 Willow Stream Drive<br>Vernon, 06066<br>(203) 875-2341                   | Paper                 | N L                               | I O C                                       | YES                  | NO                     | YES                   |
| S & T Industries, Inc.<br>21 Willow Stream Drive<br>Vernon, 06066<br>(203) 875-2384               | Metals                | F B M                             | I O C                                       | YES                  | YES                    |                       |
| B. Swirsky & Co., Inc.<br>260 Railroad Hill Street<br>Waterbury, 06708                            | Paper<br>Glass        | N C L M O                         | I O C<br>I O C                              | YES<br>YES           | YES<br>YES             | YES<br>YES            |
| Marcus Paper Company, Inc.<br>93 Wood Street<br>West Haven, 06516<br>(203) 934-6351               | Paper                 | N C L M O                         | I O C                                       | YES                  | YES                    | YES                   |

# LEGEND

## MATERIAL TYPES

## CONTRIBUTORS

### Paper

N . . . . . Newsprint  
C . . . . . Corrugated  
L . . . . . Office Ledger  
M . . . . . Mixed Paper  
O . . . . . Other

### Glass

C . . . . . Clear  
G . . . . . Green  
A . . . . . Amber

### Metals

F . . . . . Ferrous  
N-F . . . . . Non-Ferrous  
B . . . . . Bulky Metals  
M . . . . . Mixed Metals  
S . . . . . Scrap Metals

I . . . . . Individuals  
O . . . . . Organizations  
C . . . . . Contractors

| COMPANY NAME AND ADDRESS  | MATERIALS<br>ACCEPTED | MATERIAL<br>TYPES<br>(see legend) | ACCEPTS<br>MATERIAL<br>FROM<br>(see legend) | PICK-UP<br>AVAILABLE | CONTAINERS<br>PROVIDED | CONTRACT<br>AVAILABLE |
|---|-----------------------|-----------------------------------|---|----------------------|------------------------|-----------------------|
| <b>MAINE</b>  |                       |                                   |   |                      |                        |                       |
| Isadore T. Miller Co.<br>Old Hotel Road<br>Auburn, 04210<br>(207) 783-8371                          | Metals                | F N-F M S                         | I O C                                       | YES                  | YES                    | NO                    |
| Tom Sawyer, Inc.<br>RFD 2<br>Bangor, 04401<br>(207) 862-4200  | Paper                 | N C L M                           | I O C                                       | YES                  | YES                    | NO                    |
| Aroostock Paper Recycling Co.<br>8 Second Avenue<br>Fort Kent, 04743<br>(207) 834-3846              | Paper<br>Metals       | C<br>M                            | I O C<br>I O C                              | YES<br>YES           | NO<br>NO               | YES                   |
| William Goodman & Sons, Inc.<br>81-87 Marginal Way<br>Portland, 04104<br>(207) 773-4709 or 773-4700 | Paper                 | N C L M                           | I O C                                       | YES                  | NO                     | YES                   |
| Barry N. Springer, Inc.<br>36 Greene Street<br>Sabattus, 04280<br>(207) 375-4279 or 783-6672        | Paper                 | N                                 | I O C                                       | YES                  | YES                    |                       |

| <b>COMPANY NAME AND ADDRESS</b>   | <b>MATERIALS<br/>ACCEPTED</b> | <b>MATERIAL<br/>TYPES<br/>(see legend)</b> | <b>ACCEPTS<br/>MATERIAL<br/>FROM<br/>(see legend)</b> | <b>PICK-UP<br/>AVAILABLE</b> | <b>CONTAINERS<br/>PROVIDED</b> | <b>CONTRACT<br/>AVAILABLE</b> |
|---|-------------------------------|--|---|------------------------------|--------------------------------|-------------------------------|
| Waldron Scrap Iron & Metal<br>Box 917, Rt. 1<br>Scarboro, 04074<br>(207) 883-9921 | Metals                        | F N-F B M S                                | I O C   |                              | YES                            |                               |
| Rich Insulation Co.<br>Rt. 302<br>So. Windham, 04082<br>(207) 892-2191            | Paper                         | N  | I O C   |                              | NO                             | NO                            |
| Keyes Fibre Company<br>College Avenue<br>Waterville, 04901<br>(207) 873-3351      | Paper                         | N  | I O C   |                              | NO                             | NO                            |



# LEGEND

## MATERIAL TYPES

## CONTRIBUTORS

| Paper                     | Glass             | Metals                    |                           |
|---------------------------|-------------------|---------------------------|---------------------------|
| N . . . . . Newsprint     | C . . . . . Clear | F . . . . . Ferrous       | I . . . . . Individuals   |
| C . . . . . Corrugated    | G . . . . . Green | N-F . . . . . Non-Ferrous | O . . . . . Organizations |
| L . . . . . Office Ledger | A . . . . . Amber | B . . . . . Bulky Metals  | C . . . . . Contractors   |
| M . . . . . Mixed Paper   |                   | M . . . . . Mixed Metals  |                           |
| O . . . . . Other         |                   | S . . . . . Scrap Metals  |                           |

| COMPANY NAME AND ADDRESS   | MATERIALS<br>ACCEPTED | MATERIAL<br>TYPES<br>(see legend) | ACCEPTS<br>MATERIAL<br>FROM<br>(see legend) | PICK-UP<br>AVAILABLE | CONTAINERS<br>PROVIDED | CONTRACT<br>AVAILABLE |
|--|-----------------------|-----------------------------------|---|----------------------|------------------------|-----------------------|
| <b>MASSACHUSETTS</b>   |                       |                                   |   |                      |                        |                       |
| Kemble Waste Co., Inc.<br>27 Kemble Street<br>Roxbury, 02119<br>(617) 445-5758             | Paper                 | N C L                             | I O C                                       | NO                   | NO                     |                       |
| Town of Brookline<br>333 Washington Street<br>(617) 232-9000                               | Glass                 | C G A                             | I O   | NO                   | YES                    | NO                    |
|  | Paper                 | N M                               | I O C                                       | NO                   | NO                     | NO                    |
|  | Metals                | F N-F B                           | I O   | NO                   | YES                    |                       |
| Bay State Paper Recycling Corp.<br>98 Taylor Street<br>Dorchester, 02122<br>(617) 445-3900 | Paper                 | N C L M O                         | I O C                                       | NO                   | NO                     | NO                    |
| Shaffer Paper Fibres, Inc.<br>98 Taylor Street<br>Dorchester, 02122<br>(617) 825-9040      | Paper                 | N C L M O                         | I O C                                       | YES                  | YES                    | YES                   |
| Suffolk Services, Inc.<br>98 Taylor Street<br>Dorchester, 02122<br>(617) 825-9045          | Paper                 | N C L M O                         | I O C                                       | NO                   | YES                    | YES                   |
|  | Glass                 | C G A 3 G/A                       | O C   | NO                   | YES                    | YES                   |
|  | Metals                | F N-F B M S                       | I O C                                       | NO                   | YES                    |                       |
| Bird & Son, Inc.<br>Washington Street<br>E. Walpole, 02032<br>(617) 668-2500               | Paper                 | N C M                             | C   |                      | NO                     | NO                    |

| COMPANY NAME AND ADDRESS   | MATERIALS<br>ACCEPTED | MATERIAL<br>TYPES<br>(see legend) | ACCEPTS<br>MATERIAL<br>FROM<br>(see legend) | PICK-UP<br>AVAILABLE | CONTAINERS<br>PROVIDED | CONTRACT<br>AVAILABLE |
|--|-----------------------|-----------------------------------|---|----------------------|------------------------|-----------------------|
| Resource Recovery Corp. –<br>Browning Ferris Industries<br>115 Washington Street<br>Holliston, 01746<br>(617) 429-6150 | Paper                 | C                                 | I O C                                       | YES                  | YES                    | YES                   |
| Sonoco Products Company<br>P. O. Box 631<br>Holyoke, 01040<br>(413) 536-4546   | Paper                 | N C L M                           | I O C                                       | YES                  | NO                     | YES                   |
| Essex Waste Paper Co., Inc.<br>207 Marston Street<br>Lawrence, 01841<br>(617) 682-5226                                 | Paper<br>Metals       | N C L M<br>F N-F B M S            | I O C<br>I O C                              |                      | YES<br>YES             |                       |
| B. Greenblatt & Co., Inc.<br>231 Tanner Street<br>Lowell, 01851<br>(617) 453-5111                                      | Paper                 | N C L M O                         | I O C                                       | NO                   | NO                     | NO                    |
| Owens-Illinois, Inc.<br>241 Francis Avenue<br>Mansfield, 02048<br>(617) 339-9321                                       | Glass                 | C G A                             | I O C                                       | NO                   | NO                     |                       |
| Foster Forbes Glass Co.<br>National Street<br>Milford, 01757<br>(617) 478-2500   | Glass                 | C                                 | I O C                                       |                      | NO                     | YES                   |
| A. W. Martin, Inc.<br>1200 Shawmut Avenue<br>New Bedford, 02746<br>(617) 993-4359                                      | Metals<br>Paper       | F N-F B M S<br>N C L M O          | I O C<br>I O C                              | YES<br>YES           | YES<br>YES             |                       |
| Reynolds Aluminum Recycling Co.<br>50 Rear Tower Road<br>Newton Upper Falls, 02164<br>(617) 965-1350                   | Metals                | N-F                               | I O C                                       | YES                  | NO                     | NO                    |

| COMPANY NAME AND ADDRESS  | MATERIALS<br>ACCEPTED | MATERIAL<br>TYPES<br>(see legend) | ACCEPTS<br>MATERIAL<br>FROM<br>(see legend) | PICK-UP<br>AVAILABLE | CONTAINERS<br>PROVIDED | CONTRACT<br>AVAILABLE |
|---|-----------------------|-----------------------------------|---|----------------------|------------------------|-----------------------|
| No. Adams Junk Co.<br>327 Ashland Street<br>No. Adams, 01247<br>(617) 663-3185                                  | Paper                 | N                                 | I   | NO                   |                        | NO                    |
| P. Allen & Son, Inc.<br>P. O. Box 27<br>Easthampton Road<br>Northampton, 01060<br>(413) 584-3040                | Paper                 | N C L M O                         | I O C                                       | YES                  | YES                    |                       |
| Recycling Enterprises, Inc.<br>Old Webster Road<br>P. O. Box 269<br>Oxford, 01540<br>(617) 987-2700             | Glass<br>Metals       | C G A 3 G/A<br>F N-F              | I O C<br>I O C                              | YES<br>YES           | YES<br>YES             | YES                   |
| North Shore Recycled Fibres Corp.<br>53 Jefferson Avenue<br>Salem, 01970<br>(617) 289-9400                      | Paper                 | N C L M O                         | I O C                                       | YES                  | YES                    | YES                   |
| Martel Plant Dismantling &<br>Recycling, Inc.<br>29 Elmwood Avenue<br>Saugus, 01906<br>(617) 233-2908           | Metals                | B                                 | I O C                                       | YES                  | NO                     |                       |
| Acme Metals & Recycling, Inc.<br>Rear 64 Napier Street<br>P. O. Box 514<br>Springfield, 01101<br>(413) 737-3112 | Paper<br>Metals       | N C L O<br>F N-F B M S            | I O C<br>I O C                              | YES<br>YES           | YES<br>YES             | YES                   |
| Harry Goodman, Inc.<br>203 Tremont Street<br>Springfield, 01104<br>(413) 785-5331                               | Paper<br>Metals       | N C L M O<br>F N-F B M S          | I O C<br>I O C                              | YES                  | YES                    | YES                   |

| <b>COMPANY NAME AND ADDRESS</b>  | <b>MATERIALS<br/>ACCEPTED</b> | <b>MATERIAL<br/>TYPES<br/>(see legend)</b> | <b>ACCEPTS<br/>MATERIAL<br/>FROM<br/>(see legend)</b> | <b>PICK-UP<br/>AVAILABLE</b> | <b>CONTAINERS<br/>PROVIDED</b> | <b>CONTRACT<br/>AVAILABLE</b> |
|--|-------------------------------|--|---|------------------------------|--------------------------------|-------------------------------|
| Springfield Goodwill Industries<br>285 Dorset Street<br>Springfield, 01101<br>(413) 788-6981 | Glass                         | C G A                                      | I O C   |                              | NO                             | NO                            |
| Mid-City Scrap Iron and Salvage<br>548 State Road<br>Westport, 02790<br>(617) 675-7831       | Paper<br>Metals               | N C L M O<br>F N-F B M S                   | I O C<br>I O C  | YES<br>YES                   | YES<br>YES                     | YES<br>YES                    |
| Babco Metals Corp.<br>2 Kansas Street<br>Worcester, 01610<br>(617) 756-3001                  | Glass<br>Metals               | F N-F                                      | I O<br>C  | NO<br>NO                     | YES<br>YES                     |                               |

# LEGEND

| MATERIAL TYPES            |                   |                           | CONTRIBUTORS              |
|---------------------------|-------------------|---------------------------|---------------------------|
| Paper                     | Glass             | Metals                    |                           |
| N . . . . . Newsprint     | C . . . . . Clear | F . . . . . Ferrous       | I . . . . . Individuals   |
| C . . . . . Corrugated    | G . . . . . Green | N-F . . . . . Non-Ferrous | O . . . . . Organizations |
| L . . . . . Office Ledger | A . . . . . Amber | B . . . . . Bulky Metals  | C . . . . . Contractors   |
| M . . . . . Mixed Paper   |                   | M . . . . . Mixed Metals  |                           |
| O . . . . . Other         |                   | S . . . . . Scrap Metals  |                           |

| COMPANY NAME AND ADDRESS   | MATERIALS<br>ACCEPTED    | MATERIAL<br>TYPES<br>(see legend) | ACCEPTS<br>MATERIAL<br>FROM<br>(see legend) | PICK-UP<br>AVAILABLE | CONTAINERS<br>PROVIDED | CONTRACT<br>AVAILABLE |
|--|--------------------------|-----------------------------------|---|----------------------|------------------------|-----------------------|
| <b>NEW HAMPSHIRE</b>   |                          |                                   |   |                      |                        |                       |
| CPM Inc.<br>East Ryegate VT Division<br>Claremont, 03743<br>(603) 542-2592   | Paper                    | O                                 | C   | YES                  | NO                     | NO                    |
| Valley Recycling Inc.<br>Corner Maple and Plains Road<br>Claremont, 03743<br>(603) 542-9392                            | Paper                    | C L O                             | I O C                                       | YES                  | YES                    | YES                   |
| George Wool, Inc.<br>Kingston Road<br>Exeter, 03833<br>(603) 772-5857  | Paper<br>Glass<br>Metals | N C L M<br>C G A<br>N-F           | I O C<br>O<br>I O C                         | YES<br>NO<br>YES     | YES<br>YES<br>YES      | YES                   |
| J. Schwartz Motor Transportation, Inc.<br>185 Woodland Avenue<br>P. O. Box 4333<br>Manchester, 03108<br>(603) 627-4191 | Paper                    | N C L M O                         | I O C                                       | YES                  | NO                     | NO                    |
| Spaulding Fibre Co., Inc.<br>Spaulding Avenue<br>No. Rochester, 03867<br>(603) 332-0940                                | Paper                    | N C                               | C O   | YES                  |                        | NO                    |

| <b>COMPANY NAME AND ADDRESS</b>  | <b>MATERIALS<br/>ACCEPTED</b> | <b>MATERIAL<br/>TYPES<br/>(see legend)</b> | <b>ACCEPTS<br/>MATERIAL<br/>FROM<br/>(see legend)</b> | <b>PICK-UP<br/>AVAILABLE</b> | <b>CONTAINERS<br/>PROVIDED</b> | <b>CONTRACT<br/>AVAILABLE</b> |
|--|-------------------------------|--|---|------------------------------|--------------------------------|-------------------------------|
| Harding Metals, Inc.<br>Rte. 4<br>Northwood, 03261<br>(603) 942-5573                 | Metals                        | F N-F B M S                                | I O C   | YES                          | YES                            | NO                            |
| L. Weinstein & Sons, Inc.<br>10 Wallace Street<br>Rochester, 03867<br>(603) 332-3704 | Paper                         | N C  | I O   | NO                           | NO                             |                               |

# LEGEND

## MATERIAL TYPES

## CONTRIBUTORS

### Paper

### Glass

### Metals

N . . . . . Newsprint  
C . . . . . Corrugated  
L . . . . . Office Ledger  
M . . . . . Mixed Paper  
O . . . . . Other

C . . . . . Clear  
G . . . . . Green  
A . . . . . Amber

F . . . . . Ferrous  
N-F . . . . . Non-Ferrous  
B . . . . . Bulky Metals  
M . . . . . Mixed Metals  
S . . . . . Scrap Metals

I . . . . . Individuals  
O . . . . . Organizations  
C . . . . . Contractors

| COMPANY NAME AND ADDRESS  | MATERIALS<br>ACCEPTED | MATERIAL<br>TYPES<br>(see legend) | ACCEPTS<br>MATERIAL<br>FROM<br>(see legend) | PICK-UP<br>AVAILABLE | CONTAINERS<br>PROVIDED | CONTRACT<br>AVAILABLE |
|---|-----------------------|-----------------------------------|---|----------------------|------------------------|-----------------------|
| <b>RHODE ISLAND</b>   |                       |                                   |   |                      |                        |                       |
| National Bottle Mfg. Co.<br>Route 117<br>Coventry, 02816<br>(401) 397-3371          | Glass                 | C G                               | I O C                                       | YES                  | NO                     | NO                    |
| American Waste Paper<br>8 Webb Street<br>Cranston, 02920<br>(401) 781-2666          | Paper                 | N C L M O                         | I O C                                       | YES                  | YES                    | YES                   |
| Metals Recycling, Inc.<br>P. O. Box 7226<br>Johnston, 02919<br>(401) 831-7799       | Metals                | N-F M S                           | I C   | YES                  | YES                    |                       |
| Eastern Scrap Co.<br>655 Roosevelt Avenue<br>Pawtucket, 02860<br>(401) 724-2200     | Metals                | F N-F B M S                       |   |                      |                        |                       |
| United Paper Stock Company<br>33 India Street<br>Pawtucket, 02860<br>(401) 724-5700 | Paper                 | N C L M O                         | I O C                                       | YES                  | YES                    | YES                   |

| <b>COMPANY NAME AND ADDRESS</b>  | <b>MATERIALS<br/>ACCEPTED</b> | <b>MATERIAL<br/>TYPES<br/>(see legend)</b> | <b>ACCEPTS<br/>MATERIAL<br/>FROM<br/>(see legend)</b> | <b>PICK-UP<br/>AVAILABLE</b> | <b>CONTAINERS<br/>PROVIDED</b> | <b>CONTRACT<br/>AVAILABLE</b> |
|--|-------------------------------|--|---|------------------------------|--------------------------------|-------------------------------|
| A. Bazar & Son, Inc.<br>32 Thurbers Avenue<br>Providence, 02905<br>(401) 781-5750        | Paper                         | N C L                                      | I O C   | YES                          | NO                             | NO                            |
| Cove Metal Co.<br>P. O. Box 29<br>Providence, 02901<br>(401) 724-3500                    | Metals                        | N-F M                                      | I O C   | YES                          | YES                            |                               |
| Ralph Shuster, Inc.<br>P. O. Box 2762<br>Providence, 02907<br>(401) 781-2435             | Metals                        | F N-F B M S                                | I O C   | YES                          | YES                            |                               |
| Valley Paper Stock Co., Inc.<br>118 Valley Street<br>Providence, 02909<br>(401) 438-1810 | Paper                         | C L M                                      | I   | NO                           | YES                            |                               |
| Tiverton Recycling Co.<br>20 Cornell Road<br>Tiverton, 02878<br>(401) 624-4454           | Glass                         | C G A                                      | I O C   | YES                          | NO                             | YES                           |



# LEGEND

## MATERIAL TYPES

**Paper**  
 N ..... Newsprint  
 C ..... Corrugated  
 L ..... Office Ledger  
 M ..... Mixed Paper  
 O ..... Other

**Glass**  
 C ..... Clear  
 G ..... Green  
 A ..... Amber

**Metals**  
 F ..... Ferrous  
 N-F ..... Non-Ferrous  
 B ..... Bulky Metals  
 M ..... Mixed Metals  
 S ..... Scrap Metals

## CONTRIBUTORS

I ..... Individuals  
 O ..... Organizations  
 C ..... Contractors

| COMPANY NAME AND ADDRESS   | MATERIALS<br>ACCEPTED | MATERIAL<br>TYPES<br>(see legend) | ACCEPTS<br>MATERIAL<br>FROM<br>(see legend) | PICK-UP<br>AVAILABLE | CONTAINERS<br>PROVIDED | CONTRACT<br>AVAILABLE |
|--|-----------------------|-----------------------------------|---|----------------------|------------------------|-----------------------|
| <b>VERMONT</b>   |                       |                                   |   |                      |                        |                       |
| Burlington Paper Stock Co.<br>111 Archibald Street<br>Burlington, 05402<br>(802) 862-9641    | Paper<br>Metals       | N C L<br>F N-F M S                | I O C<br>I O C                              | NO                   | NO<br>NO               | YES                   |
| Burlington Waste & Metal Co.<br>North Winooski Avenue<br>Burlington, 05402<br>(802) 862-5333 | Paper<br>Metals       | O<br>F N-F                        |   |                      |                        |                       |
| Gates Salvage Yard, Inc.<br>Rt. 14<br>Hardwick, 05843<br>(802) 472-5794 or 472-5058          | Metals                | F N-F B M S                       | I O C                                       | YES                  | YES                    |                       |
| Donahue Salvage Co.<br>32 Allen Street<br>Rutland, 05701<br>(802) 773-7630                   | Metals                | F N-F                             | I   |                      |                        |                       |
| Rutland Waste & Metal Co.<br>246 West Street<br>Rutland, 05701<br>(802) 773-2877             | Paper<br>Metals       | N<br>F N-F M                      | C<br>I O C                                  | YES<br>YES           | NO<br>NO               | NO                    |

UNITED STATES  
ENVIRONMENTAL PROTECTION AGENCY  
REGION 1  
BOSTON, MASSACHUSETTS 02203

---

OFFICIAL BUSINESS  
PENALTY FOR PRIVATE USE, \$300

POSTAGE AND FEES PAID  
ENVIRONMENTAL PROTECTION AGENCY  
EPA-335

