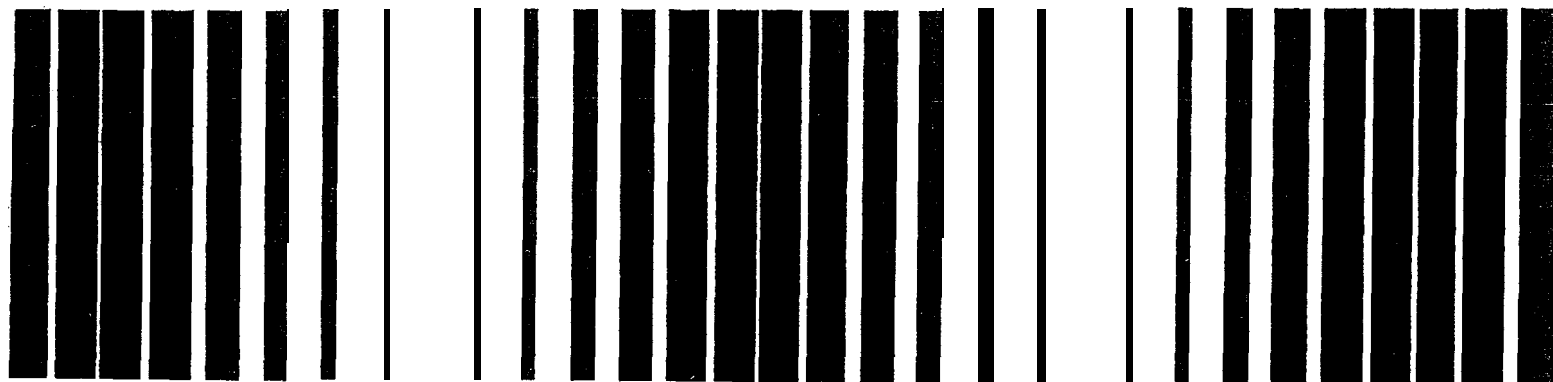




# Technical Approaches to Characterizing and Cleaning Up Metal Finishing Sites Under the Brownfields Initiative



# **Technical Approaches to Characterizing and Cleaning Up Metal Finishing Sites Under the Brownfields Initiative**

Technology Transfer and Support Division  
National Risk Management Research Laboratory  
Office of Research and Development  
U.S. Environmental Protection Agency  
Cincinnati, OH 45268



---

## Contents

Foreword .....	iii
Contents .....	v
Acknowledgments .....	viii
1. Introduction .....	1
Background .....	1
Purpose .....	1
2. Industrial Processes and Contaminants at Metal Finishing Sites .....	3
Surface Preparation Operations .....	3
Metal Finishing Operations .....	3
Anodizing Operations .....	3
Chemical Conversion Coating .....	5
Electroplating .....	5
Electroless and Immersion Plating .....	5
Painting .....	5
Other Metal Finishing Techniques .....	6
Auxiliary Activity Areas and Potential Contaminants .....	6
Wastewater Treatment .....	6
Sunken Wastewater Treatment Tank .....	6
Chemical Storage Area .....	6
Disposal Area .....	6
Other Considerations .....	6
3. Site Assessment .....	7
The Central Role of the State Agencies .....	7
State Voluntary Cleanup Programs .....	7
Levels of Contaminant Screening and Cleanup .....	7
Performing a Phase I Site Assessment: Obtaining Facility Background Information from	
Existing Data .....	8
Facility Records .....	8
Other Sources of Recorded Information .....	8
Identifying Migration Pathways and Potentially Exposed Populations .....	9
Gathering Topographic Information .....	9
Gathering Soil and Subsurface Information .....	10
Gathering Groundwater Information .....	10
Identifying Potential Environmental and Human Health Concerns .....	10
Involving the Community .....	11
Conducting a Site Visit .....	11
Conducting Interviews .....	11
Developing a Report .....	12
Performing a Phase II Site Assessment: Sampling the Site .....	12
Setting Data Quality Objectives .....	13
Screening Levels .....	15
Environmental Sampling and Data Analysis .....	16
Levels of Sampling and Analysis .....	16
Increasing the Certainty of Sampling Results .....	16

---

## Contents (continued)

Site Assessment Technologies .....	16
Field versus Laboratory Analysis .....	18
Sample Collection and Analysis Technologies .....	18
Additional Considerations for Assessing Metal Finishing Sites .....	20
Where to Sample .....	20
How Many Samples to Collect .....	23
What Types of Analysis to Perform .....	23
General Sampling Costs .....	23
Soil Collection Costs .....	23
Groundwater Sampling Costs .....	23
Surface Water and Sediment Sampling Costs .....	24
Sample Analysis Costs .....	24
4. Site Cleanup .....	25
Developing a Cleanup Plan .....	25
Institutional Controls .....	26
Containment Technologies .....	26
Types of Cleanup Technologies .....	26
Cleanup Technology Options for Metal Finishing Sites .....	27
Post-Construction Care .....	27
5. Conclusion .....	35
Appendix A: Acronyms and Abbreviations .....	36
Appendix B: Glossary of Key Terms .....	37
Appendix C: Bibliography .....	46

---

## Tables

1	Common Contaminants at Metal Finishing Site .....	5
2	Non-Invasive Assessment Technologies .....	17
3	Soil and Subsurface Sampling Tools .....	19
4	Groundwater Sampling Tools .....	20
5	Sample Analysis Technologies .....	21
6	Cleanup Technologies for Metal Finishing Brownfields Sites .....	28

## Figure

1	Typical metal finishing facility .....	4
---	--	---

---

## Acknowledgments

This document was prepared by Eastern Research Group (ERG) for the U.S. Environmental Protection Agency's Center for Environmental Research Information (CERI) in the Office of Research and Development. Linda Stein served as Project Manager for ERG. Joan Colson of CERI served as Work Assignment Manager. Special thanks is given to Ann White and Jean Dye of EPA's Office of Research and Development for editing support.

Reviewers of the document included Douglas Grosse and Kenneth Brown of the U.S. Environmental Protection Agency's National Risk Management Research Laboratory and National Exposure Research Laboratory, respectively. Appreciation is given to EPA's Office of Special Programs for guidance on the Brownfields Initiative.

---

## Chapter 1

### Introduction

#### Background

Many communities across the country contain brownfields sites, which are abandoned, idle, and under-used industrial and commercial facilities where expansion or redevelopment is complicated by real or perceived environmental contamination. Concerns about liability, cost, and potential health risks associated with brownfields sites often prompt businesses to migrate to “greenfields” outside the city. Left behind are communities burdened with environmental contamination, declining property values, and increased unemployment. The U.S. Environmental Protection Agency’s (EPA’s) Brownfields Economic Redevelopment Initiative was established to enable states, site planners, and other community stakeholders to work together in a timely manner to prevent, assess, safely clean up, and sustainably reuse brownfields sites. (U.S. EPA Brownfields Home Page, <http://www.epa.gov/brownfields>).

The cornerstone of EPA’s Brownfields Initiative is the Pilot Program. Under this program, EPA is funding more than 200 brownfields assessment pilot projects in states, cities, towns, counties, and tribes across the country. The pilots, each funded at up to \$200,000 over two years, are bringing together community groups, investors, lenders, developers, and other affected parties to address the issues associated with assessing and cleaning up contaminated brownfields sites and returning them to appropriate, productive use. Information about the Brownfields Initiative may be obtained from the EPA’s Office of Solid Waste and Emergency Response, Outreach/Special Projects Staff or any of EPA’s regional brownfields coordinators. These regional coordinators can provide communities with technical assistance such as targeted brownfields assessments. A description of these assistance activities is contained on the brownfields web page. In addition to the hundreds of brownfields sites being addressed by these pilots, over 40 states have established brownfields or voluntary cleanup programs to encourage

municipalities and private sector organizations to assess, clean up, and redevelop brownfields sites.

#### Purpose

EPA has developed a set of technical guides, including this document, to assist communities, states, municipalities, and the private sector to more effectively address brownfields sites. Each guide in this series contains information on a different type of brownfields site (classified according to former industrial use). In addition, a supplementary guide contains information on cost-estimating tools and resources for brownfields sites. EPA has developed this “Metal Finishing” guide to provide city planners, private sector developers, and other participants in the brownfields decision-making process with a better understanding of the technical issues involved in assessing and cleaning up metal finishing sites so that they can make the most informed decisions possible.<sup>1</sup> Throughout the guide, the term “planner” is used; this term is intended to be descriptive of the many different people who are referenced above and may use the information contained herein. It is assumed that planners will use the services of an environmental professional for some aspects of site characterization and cleanup.

The overview presented in this guide of the technical process involved in assessing and cleaning up brownfields sites can assist planners in making decisions at various stages of the project. An understanding of land use and industrial processes conducted in the past at a site can help the planner to conceptualize the site and identify

---

<sup>1</sup> Because parts of this document are technical in nature, planners may want to refer to additional EPA guides for further information. *The Tool Kit of Technology Information Resources for Brownfields Sites*, published by EPA’s Technology Innovation Office (TIO), contains a comprehensive list of relevant technical guidance documents (available from NTIS, No. PB97144828). EPA’s *Road Map to Understanding Innovative Technology Options for Brownfields Investigation and Cleanup*, also by EPA’s TIO, provides an introduction to site assessment and cleanup (EPA Order No. EPA 542-B-97-002).



---

likely areas of contamination that may require cleanup. Numerous resources are suggested to facilitate characterization of the site and consideration of cleanup technologies .

Specifically, the objective of this document is to provide decision-makers with:

- An understanding of common industrial processes at metal finishing facilities and the relationship between such processes and potential releases of contaminants to the environment.
  - Information on the types of contaminants likely to be present at a metal finishing site.
  - A discussion of site assessment (also known as site characterization), screening and cleanup levels, and cleanup technologies that can be used to assess and cleanup the types of contaminants likely to be present at metal finishing sites.
  - A conceptual framework for identifying potential contaminants at the site, pathways by which contaminants may migrate off site, and environmental and human health concerns.
  - Information on developing an appropriate cleanup plan for metal finishing sites where contamination levels must be reduced to allow a site's reuse.
  - A discussion of pertinent issues and factors that should be considered when developing a site assessment and cleanup plan and selecting appropriate technologies for brownfields, given time and budget constraints.
- A list of acronyms is provided in Appendix A, Appendix B provides a glossary of key terms, and Appendix C lists an extensive bibliography.

---

## Chapter 2

# Industrial Processes and Contaminants at Metal Finishing Sites

Understanding the industrial processes used during a metal finishing facility's active life and the types of contaminants that may be present provides important information to guide planners in the assessment, cleanup, and restoration of the site to an acceptable condition for sale or reuse. This section provides a general overview of the processes, chemicals, and contaminants used or found at metal finishing sites. Specific metal finishing brownfields sites may have had a different combination of these processes, chemicals, and contaminants. Therefore, this information can be used only to develop a framework of likely past activities. Planners should obtain facility specific information on industrial processes at their site whenever possible. Site-specific information is also important to obtain because the site may have been used for other industrial purposes at other times in the past.

This section describes waste-generating surface preparation operations; metal finishing operations and the types of waste streams and specific contaminants associated with each process; auxiliary areas at metal finishing sites that may produce contaminants and nonprocess-related contamination problems associated with metal finishing sites. Figure 1 presents typical metal finishing processes and land areas, along with the types of waste streams associated with each area. Table 1 lists the specific contaminants associated with each waste stream.

### Surface Preparation Operations

Metal finishing processes are typically housed within one structure. The surface of metal products generally requires preparation (i.e., cleaning) prior to applying a finish. An initial set of degreasing tanks ([A] in Figure 1) are used to remove oils, grease, and other foreign matter from the surface of the metal so that a coating can be applied. Metal finishing facilities may use solvents or emulsion solutions (i.e., solvents dispersed in an aqueous medium with the aid of an emulsifying agent) in the degreasing tanks

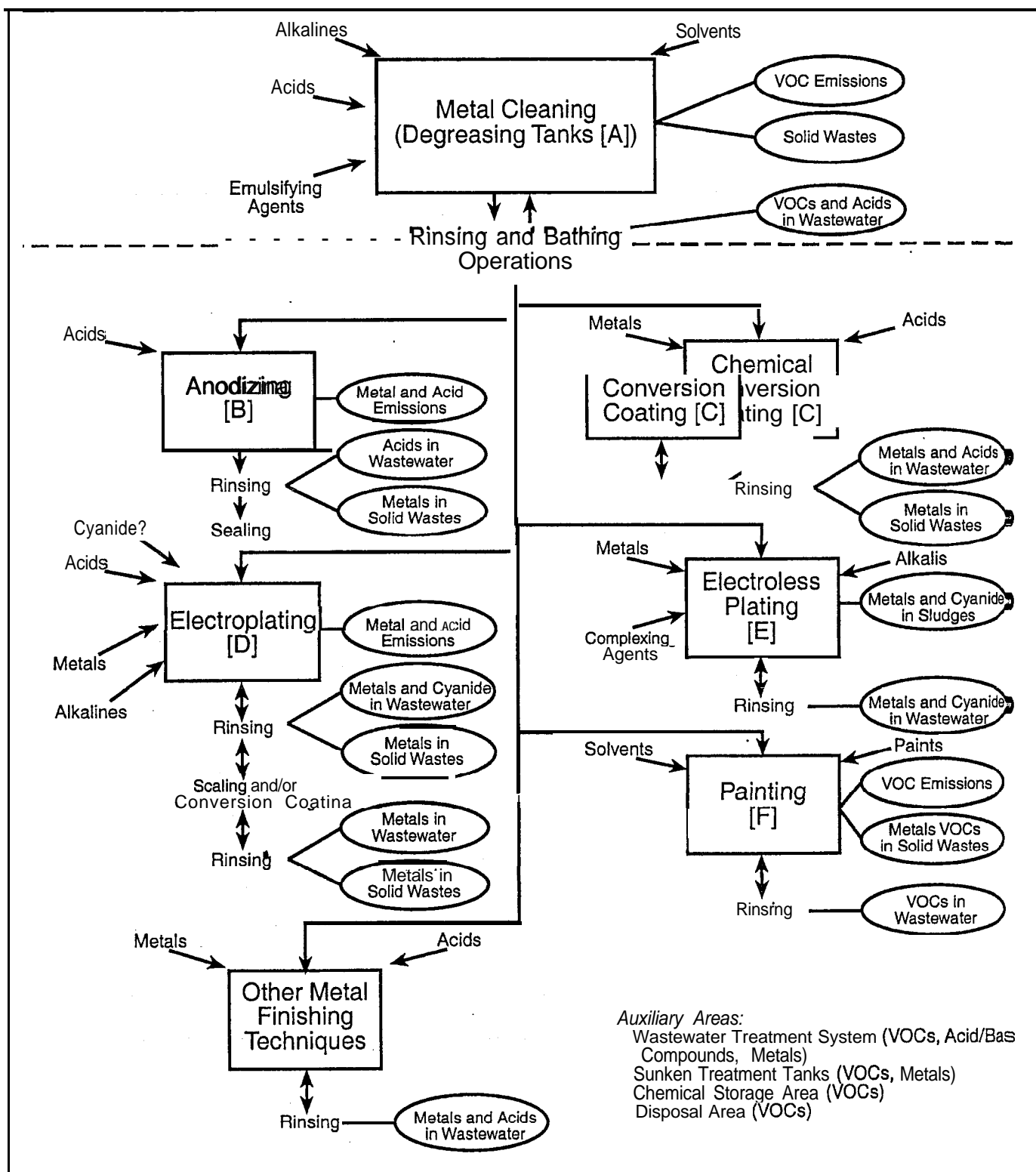
to clean and prepare the surfaces of metal parts. Wastewaters generated from cleaning operations are primarily rinse waters, which are usually combined with other metal finishing wastewaters and treated on site by conventional chemical precipitation. These wastewaters may contain solvents, as listed in Table 1. Solid wastes such as wastewater treatment sludges, still bottoms, and cleaning tank residues may also be generated.

### Metal Finishing Operations

Metal finishing operations are typically performed in a series of tanks (baths) followed by rinsing cycles. Acid or alkaline baths "pickle" the surface of the steel to improve the adherence of the coating. After the pickling baths, the metal products are moved to plating tanks, where the final coat is applied. Wastes generated during finishing operations derive from the solvents and cleansers applied to the surface and the metal-ion-bearing aqueous solutions used in acid/alkaline rinsing and bathing operations. Common metal finishing operations include anodizing, chemical conversion coating, electroplating, electroless plating, and painting. Common waste streams include metals and acids in the wastewater; metals in sludges and solid waste; and solvents from painting operations, as listed in Table 1. If these wastes were managed or disposed of on site, it is possible that pollutants were released into the environment. Even at facilities where wastes were not stored on site, releases may have occurred during the handling and use of chemicals. References are provided in Appendix C for more in-depth information on metal finishing operations and associated environmental considerations. Metal finishing operations are described below.

### Anodizing Operations

Anodizing is an electrolytic process that uses acids from the combined electrolytic solution/acid bath tank to convert the metal surface into an insoluble oxide coating ([B]



**Figure 1.** Typical metal finishing facility.

(Source: Adapted from *Profile of the Fabricated Metal Products Industry* (U.S. EPA, 1995).

in Figure 1). After anodizing, metal parts are typically rinsed and then sealed. Anodizing operations produce contaminated wastewaters and solid wastes.

Table 1. Common Contaminants at Metal Finishing Sites

Contaminant Group	Contaminant Name
Volatile Organic Compounds (VOCs)	Acetone, benzene, isopropyl alcohol, 2-dichlorobenzene, 4-trimethylbenzene, dichloromethane, ethyl benzene, freon 113, methanol, methyl isobutyl ketone, methyl ethyl ketone, phenol, tetrachloroethylene, toluene, trichloroethylene, xylene (mixed isomers).
Metals/Inorganics	Aluminum, antimony, arsenic, asbestos (friable), barium, cadmium, chromium, cobalt, copper, lead, cyanide, manganese, mercury, nickel, silver, zinc.
Acids	Hydrochloric acid, nitric acid, phosphoric acid, sulfuric acid.

## Chemical Conversion Coating

Chemical conversion coating ([C] in Figure 1) includes the following processes:

- **Chromating.** Chromate conversion coatings are produced on various metals by chemical or electrochemical treatment. Acid solutions react with the metal surface to form a layer of a complex mixture of the constituent compounds, including chromium and the base metal.
- **Phosphating.** Phosphate conversion coating involves the immersion of steel, iron, or zinc plated steel into a dilute solution of phosphate salts, phosphoric acid, and other reagents to condition the surfaces for further processing.
- **Metal Coloring.** Metal coloring involves chemically converting the metal surface into an oxide or similar metallic compound to produce a decorative finish.
- **Passivating.** Passivating is the process of forming a protective film on metals by immersing them in an acid solution (usually nitric acid or nitric acid with sodium dichromate).

Pollutants associated with chemical conversion processes enter the wastestream through rinsing and batch dumping of process baths. Wastewaters containing chromium are usually pretreated; this process generates a sludge that is sent offsite for metals reclamation and/or disposal.

## Electroplating

Electroplating is the production of a surface coating of one metal upon another by electrodeposition ([D] in Figure 1). In electroplating, metal ions (in either acid, alkaline, or neutral solutions) are reduced on the cathodic surfaces of the work pieces being plated. Electroplating operations produce contaminated wastewaters and solid wastes. Contaminated wastewaters result from work piece rinsing and process cleanup waters. Rinse waters from electroplating are usually combined with other metal finishing wastewaters and treated onsite by conventional chemical precipitation, which results in wastewater treatment sludges. Other wastes generated from electroplating include spent process solutions and quench baths that may be discarded periodically when the concentrations of contaminants inhibit their proper functions.

## Electroless and Immersion Plating

Electroless plating involves chemically depositing a metal coating onto a plastic object by immersing the object in a plating solution ([E] in Figure 1). Immersion plating produces a thin metal deposit, commonly zinc or silver, by chemical displacement. Both produce contaminated wastewater and solid wastes. Facilities generally treat spent plating solutions and rinse waters chemically to precipitate the toxic metals; however, some plating solutions can be difficult to treat because of the presence of chelates. Most waste sludges resulting from electroless and immersion plating contain significant concentrations of toxic metals.

## Painting

Painting is the application of predominantly organic coatings for protective and/or decorative purposes ([F] in Figure 1). Paint is applied in various forms, including dry powder, solvent diluted formulations, and waterborne formulations, most commonly via spray painting and electrodeposition. Painting operations may result in solvent-containing waste and the direct release of solvents, paint sludge wastes, and paint-bearing wastewaters. Paint cleanup operations also may contribute to the release of chlorinated solvents. Discharge from water curtain booths generates the most wastewater. Onsite wastewater treatment processes generate a sludge that is taken off site for disposal. Other sources of wastes include emission control devices (e.g., paint booth collection systems, ventilation filters) and discarded paints. Sandblasting may be performed to remove paint and to clean metal surfaces for painting or resurfacing; this practice may be of particular concern if the paint being removed contains lead.

---

## **Other Metal Finishing Techniques**

Polishing, hot dip coating, and etching are other processes used to finish metal. Wastewaters are often generated during these processes. For example, after polishing operations, area cleaning and washdown can produce metal-bearing wastewaters. Hot dip coating techniques, such as galvanizing, use water for rinses following pre-cleaning and for quenching after coating. Hot dip coatings also generate a solid waste, an oxide dross, that is periodically skimmed off the heated tank. Etching solutions are composed of strong acids or bases which may result in etching solution wastes that contain metals and acids.

## **Auxiliary Activity Areas and Potential Contaminants**

### **Wastewater Treatment**

Many of the operations involved in metal finishing produce wastewaters, which usually are combined and treated onsite, often by conventional chemical precipitation. Even though the facility would have been required to meet state wastewater discharge standards before releasing wastes, spills of process wastewater may have occurred in the area. At abandoned sites, any remaining wastewater left in tanks or floor drains could contain solvents, metals, and acids, such as those listed in Table 1. In addition, it is possible that wastewater sludges, which can contain metals, were left at the site in baths or tanks.

### **Sunken Wastewater Treatment Tank**

Some metal finishing facilities have wastewater treatment tanks sunk into the concrete slab to rest on the underlying soils. This is done by design to aid facility operators in accessing the tanks. If these tanks develop leaks, the lost material, which may contain VOCs and metals, may be released directly to the soils beneath the building.

### **Chemical Storage Area**

At most metal finishing sites an area for storing chemicals used in the various operations was designated. Bulk containers stored in these areas may have leaked or spilled,

resulting in discharges to floor drains or cracks in the floor. VOCs such as those listed in Table 1 may be found in such areas. Acids and alkaline reagents may also be found in this area.

### **Disposal Area**

Materials, both liquid and solid, from process baths may have been disposed of at a designated area at the site. Such areas may be identified by stained soils or a lack of vegetation. These areas may contain VOCs, such as those listed in Table 1.

### **Other Considerations**

Not all releases are related to the industrial processes described above. Some releases result from the associated services required to maintain the industrial processes. For example, electroplating facilities are large consumers of electricity, which requires a number of transformers. At older facilities, these transformers may have been disposed of in unmarked areas of the facility, which makes it difficult to know where leaks of polychlorinated biphenyl (PCB)-laden oils used as coolants may have occurred. Similarly, large machinery used to move metal pieces requires periodic maintenance. In the past, chemicals used for maintenance operations, such as solvents, oils, and grease, may have been flushed down drains and sumps after use. Stormwater runoff from paved areas such as parking lots may contain petroleum hydrocarbons and oils, which can contaminate areas located downstream. When conducting initial site evaluations, planners should expand their investigations to include these types of activities.

In addition, metal finishing facilities may have been located in older buildings that contain lead paint and asbestos insulation and tiling. Any structure built before 1970 should be assessed for the presence of these materials. They can cause significant problems during demolition or renovation of the structures for reuse. Special handling and disposal requirements under state and federal laws can significantly increase the cost of construction.

---

## Chapter 3

### Site Assessment

The purposes of a site assessment are to determine whether or not contamination is present and to assess the nature and extent of possible contamination and the risks to people and the environment that the contamination may pose. The elements of a site assessment are designed to help planners build a conceptual framework of the facility, which will aid site characterization efforts. The conceptual framework should identify:

- Potential contaminants that remain in and around the facility.
- Pathways along which contaminants may move.
- Potential risks to the environment and human health that exist along the migration pathways.

This section highlights the key role that state environmental agencies usually play in brownfields projects. The types of information that planners should attempt to collect to characterize the site in a Phase I site assessment (i.e., the facility's history) are discussed. Information is presented about where to find and how to use this information to determine whether or not contamination is likely. Additionally this section provides information to assist planners in conducting a Phase II site assessment, including sampling the site and determining the magnitude of contamination. Other considerations in assessing iron and steel sites are also discussed, and general sampling costs are included. This guide provides only a general approach to site evaluation; planners should expand and refine this approach for site-specific use at their own facilities.

#### **The Central Role of the State Agencies**

A brownfields redevelopment project involves partnerships among site planners (whether private or public sector), state and local officials, and the local community. State environmental agencies often are key decision-makers and a primary source of information for brownfields

projects. Brownfields sites are generally cleaned up under state programs, particularly state voluntary cleanup or Brownfields programs; thus, planners will need to work closely with state program managers to determine their particular state's requirements for brownfields development. Planners may also need to meet additional federal requirements. Key state functions include:

- Overseeing brownfields site assessment and cleanup processes, including the management of voluntary cleanup programs.
- Providing guidance on contaminant screening levels.
- Serving as a source of site information, as well as legal and technical guidance.

#### **State Voluntary Cleanup Programs (VCPs)**

State VCPs are designed to streamline brownfields redevelopment, reduce transaction costs, and provide state liability protection for past contamination. Planners should be aware that state cleanup requirements vary significantly and should contact the state brownfield manager; brownfields managers from state agencies will be able to identify their state requirements for planners and will clarify how their state requirements relate to federal requirements.

#### **Levels of Contaminant Screening and Cleanup**

Identifying the level of site contamination and determining the risk, if any, associated with that contamination level is a crucial step in determining whether cleanup is needed. Some state environmental agencies, as well as federal and regional EPA offices, have developed screening levels for certain contaminants, which are incorporated into some brownfields programs. Screening levels represent breakpoints in risk-based concentrations of chemicals in soil, air, or water. If contaminant concentra-

tions are below the screening level, no action is required; above the level, further investigation is needed.

In addition to screening levels, EPA regional offices and some states have developed cleanup standards; if contaminant concentrations are above cleanup standards, cleanup must be pursued. The section on “Performing a Phase II Site Assessment” in this document provides more information on screening levels, and the section on “Site Cleanup” provides more information on cleanup standards.

### **Performing a Phase I Site Assessment: Obtaining Facility Background Information from Existing Data**

Planners should compile a history of the iron and steel manufacturing facility to identify likely site contaminants and their probable locations. Financial institutions typically require a Phase I site assessment prior to lending money to potential property buyers to protect the institution’s role as mortgage holder (Geo-Environmental Solutions, n.d.). In addition, parties involved in the transfer, foreclosure, leasing, or marketing of properties recommend some form of site evaluation (The Whitman Companies, 1996). The site history should include?

- A review of readily available records (e.g., former site use, building plans, records of any prior contamination events).
- A site visit to observe the areas used for various industrial processes and the condition of the property.
- Interviews with knowledgeable people (e.g., site owners, operators, and occupants; neighbors; local government officials).
- A report that includes an assessment of the likelihood that contaminants are present at the site.

The Phase I site assessment should be conducted by an environmental professional, and may take three to four weeks to complete. Site evaluations are required in part as a response to concerns over environmental liabilities associated with property ownership. A property owner needs to perform “due diligence,” i.e. fully inquire into the previous ownership and uses of a property to demonstrate that all reasonable efforts to find site contamination have been made. Because brownfields sites often contain low levels of contamination and pose low risks,

due diligence through a Phase I site assessment will help to answer key questions about the levels of contamination. Several federal and state programs exist to minimize owner liability at brownfields sites and facilitate cleanup and redevelopment; planners should contact their state environmental or regional EPA office for further information.

Information on how to review records, conduct site visits and interviews, and develop a report during a Phase I site assessment is provided below.

### **Facility Records**

Facility records are often the best source of information on former site activities. If past owners are not initially known, a local records office should have books that contain ownership history. Generally, records pertaining specifically to the site in question are adequate for review purposes. In some cases, however, records of adjacent properties may also need to be reviewed to assess the possibility of contaminants migrating from one to the site, based on geologic or hydrogeologic conditions. If the brownfields property resides in a low-lying area, in close proximity to other industrial facilities or formerly industrialized sites, or downgradient from current or former industrialized sites, an investigation of adjacent properties is warranted.

### **Other Sources of Recorded Information**

Planners may need to use other sources in addition to facility records to develop a complete history. ASTM Standard 1527 identifies standard sources such as historical aerial photographs, fire insurance maps, property tax files, recorded land title records, topographic maps, local street directories, building department records, zoning/land use records, and newspaper archives (ASTM, 1997).

Some metal finishing site managers may have worked with state environmental regulators; these offices may be key sources of information. Federal (e.g., EPA) records may also be useful. The types of information provided by regulators may include facility maps that identify activities and disposal areas, lists of stored pollutants, and the types and levels of pollutants released. State offices and other sources where planners can search for site-specific information are presented below:

- The state offices responsible for industrial waste management and hazardous waste should have a record of any emergency removal actions at the site (e.g., the removal of leaking drums that posed an “immi-

---

<sup>2</sup> The elements of a Phase I site assessment presented here are based in part on ASTM Standards 1527 and 1528.

ment threat” to local residents); any Resource Conservation and Recovery Act (RCRA) permits issued at the site; notices of violations issued; and any environmental investigations.

- The state office responsible for discharges of wastewater to water bodies under the National Pollutant Discharge Elimination System (NPDES) program will have a record of any permits issued for discharges into surface water at or near the site. The local publicly owned treatment works (POTW) will have, records for permits issued for indirect discharges into sewers (e.g., floor drain discharges to a sanitary sewer).
- The state office responsible for underground storage tanks may also have records of tanks located at the site, as well as records of any past releases.
- The state office responsible for air emissions may be able to provide information on air pollutants associated with particular types of onsite contamination.
- EPA’s Comprehensive Environmental Response, Compensation, and Liability Information System (CERCLIS) of potentially contaminated sites should have a record of any previously reported contamination at or near the site. For information, contact the Superfund Hotline (800-424-9346).
- EPA Regional Offices can provide records of sites that have hazardous substances. Information is available from the Federal National Priorities List (NPL) and lists of treatment, storage, and disposal (TSD) facilities subject to corrective action under RCRA. RCRA non-TSD facilities, RCRA generators, and Emergency Response Notification System (ERNS) information on contaminated or potentially contaminated sites can help to determine if neighboring facilities are recorded as having released hazardous substances into the immediate environment. Contact EPA Regional Offices for more information.
- State and local records may indicate any permit violations or significant contaminant releases from or near the site’.
- Residents and former employees may be able to provide useful information on waste management practices, but these reports should be substantiated.

Local fire departments may have responded to emergency events at the facility. Fire departments or city

halls may have fire insurance maps<sup>3</sup> or other historical maps or data that indicate the location of hazardous waste storage areas at the site.

- Local waste haulers may have records of the facility’s disposal of hazardous or other waste materials.
- Utility records.
- Local building permits.

Requests for federal regulatory information are governed by the Freedom of Information Act (FOIA), and the fulfilling of such requests generally takes a minimum of four to eight weeks. Similar freedom of information legislation does not uniformly exist on the state level; one can expect a minimum waiting period of four weeks to receive requested information (ASTM, 1997).

### ***Identifying Migration Pathways and Potentially Exposed Populations***

Offsite migration of contaminants may pose a risk to human health and the environment; planners should gather as much readily available information on the physical characteristics of the site as possible. Migration pathways, i.e., soil, groundwater, and air, will depend on site-specific characteristics such as geology and the physical characteristics of the individual contaminants (e.g., mobility). Information on the physical characteristics of the general area can play an important role in identifying potential migration pathways and focusing environmental sampling activities, if needed. Planners should collect three types of information to obtain a better understanding of migration pathways, including topographic, soil and subsurface, and groundwater data, as described below.

### **Gathering Topographic Information**

In this preliminary investigation, topographic information will be helpful in determining whether the site may be subject to contamination by adjoining properties or may be the source of contamination of other properties. Topographic information will help planners identify low-lying areas of the facility where rain and snowmelt (and any contaminants in them) may collect and contribute both water and contaminants to the underlying aquifer or surface runoff to nearby areas. The US. Geological Survey (USGS) of the Department of the Interior has topographic maps for nearly every part of the country. These

<sup>3</sup> Fire insurance maps show, for a specific property, the locations of such items as USTs, buildings, and areas where chemicals have been used for certain industrial processes.



maps are inexpensive and available through the following address:

USGS Information Services

Box 25286

Denver, CO 80225

[[http://www.mapping.usgs.gov/esic/to\\_order.html](http://www.mapping.usgs.gov/esic/to_order.html)]

### **Gathering Soil and Subsurface Information**

Planners should know about the types of soils at the site from the ground surface extending down to the water table because soil characteristics play a large role in how contaminants move in the environment. For example, clay soils limit downward movement of pollutants into underlying groundwater but facilitate surface runoff. Sandy soils, on the other hand, can promote rapid infiltration into the water table while inhibiting surface runoff. Soil information can be obtained through a number of sources:

- Local planning agencies should have soil maps to support land use planning activities. These maps provide a general description of the soil types present within a county (or sometimes a smaller administrative unit, such as a township).
- The Natural Resource Conservation Service and Cooperative Extension Service offices of the U.S. Department of Agriculture (USDA) are also likely to have soil maps.
- Well-water companies are likely to be familiar with local subsurface conditions, and local water districts and state water divisions may have well-logging information.
- Local health departments may be familiar with subsurface conditions because of their interest in septic drain fields.
- Local construction contractors are likely to be familiar with subsurface conditions from their work with foundations.

Soil characteristics can vary widely within a relatively small area, and it is common to find that the top layer of soil in urban areas is composed of fill materials, not native soils. While local soil maps and other general soil information can be used for screening purposes such as in a Phase I assessment, site-specific information will be needed in the event that cleanup is necessary.

### **Gathering Groundwater Information**

Planners should obtain general groundwater information about the site area, including:

- State classifications of underlying aquifers
- Depth to the groundwater tables
- Groundwater flow direction and rate

This information can be obtained by contacting state environmental agencies or from several local sources, including water authorities, well drilling companies, health departments, and Agricultural Extension and Natural Resource Conservation Service offices.

### **Identifying Potential Environmental and Human Health Concerns**

Identifying possible environmental and human health risks early in the process can influence decisions regarding the viability of a site for cleanup and the choice of cleanup methods used. A visual inspection of the area will usually suffice to identify onsite or nearby wetlands and water bodies that may be particularly sensitive to releases of contaminants during characterization or cleanup activities. Planners should also review available information (e.g., from state and local environmental agencies) to ascertain the proximity of residential dwellings, nearby industrial/commercial activities, and wetlands/water bodies, and to identify people, animals, or plants that might receive migrating contamination; any particularly sensitive populations in the area (e.g., children; endangered species); and whether any major contamination events have occurred previously in the area (e.g., drinking water problems; groundwater contamination).

For environmental information, planners can contact the U.S. Army Corps of Engineers, state environmental agencies, local planning and conservation authorities, the U.S. Geological Survey, and the USDA Natural Resource Conservation Service. State and local agencies and organizations can usually provide information on local fauna and the habitats of any sensitive and/or endangered species.

For human health information, planners can contact:

- State and local health assessment organizations. Organizations such as health departments, should have data on the quality of local well water used as a drink-

ing water source, as well as any human health risk studies that have been conducted. In addition, these groups may have other relevant information, such as how certain types of contaminants (e.g., volatile organics, such as benzene and phenols) might pose a health risk (e.g., dermal exposure to volatile organics during site characterization); information on exposures to particular contaminants and potential associated health risks can also be found in health profile documents developed by the Agency for Toxic Substances and Disease Registry (ATSDR). In addition, ATSDR may have conducted a health consultation or health assessment in the area if an environmental contamination event that may have posed a health risk occurred in the past; such an event and assessment should have been identified in the Phase I records review of prior contamination incidents at the site if any occurred. For information, contact ATSDR's Division of Toxicology (404-639-6300).

Local water and health departments. During the site visit (described below), when visually inspecting the area around the facility, planners should identify any residential dwellings or commercial activities near the facility and evaluate whether people there may come into contact with contamination along one of the migration pathways. Where groundwater contamination may pose a problem, planners should identify any nearby waterways or aquifers that may be impacted by groundwater discharge of contaminated water, including any drinking water wells that may be downgradient of the site, such as a municipal well field. Local water departments will have a count of well connections to the public water supply. Planners should also pay particular attention to information on private wells in the area downgradient of the facility, since, depending on their location, they may be vulnerable to contaminants migrating *offsite* even when the public municipal drinking water supply is not vulnerable. Local health departments often have information on the locations of private wells.

In addition to groundwater sources and migration pathways, surface water sources and pathways should be evaluated since groundwater and surface waters can interface at some (or several) point(s) in the region. Contaminants in groundwater can eventually migrate to surface waters, and contaminants in surface waters can migrate to groundwater.

## ***Involving the Community***

Community-based organizations represent a wide range of issues, from environmental concerns to housing issues to economic development. These groups can often be helpful in educating planners and others in the community about local brownfields sites, which can contribute to successful brownfields site assessment and cleanup activities. In addition, most state voluntary cleanup programs require that local communities be adequately informed about brownfields cleanup activities. Planners can contact the local Chamber of Commerce, local philanthropic organizations, local service organizations, and neighborhood committees for community input. State and local environmental groups may be able to supply relevant information and identify other appropriate community organizations. Local community involvement in brownfields projects is a key component in the success of such projects.

## ***Conducting a Site Visit***

In addition to collecting and reviewing available records, planners need to conduct a site visit to visually and physically observe the uses and conditions of the property, including both outdoor areas and the interior of any structures on the property. Current and past uses involving the use, treatment, storage, disposal, or generation of hazardous substances or petroleum products should be noted. Current or past uses of abutting properties that can be observed readily while conducting the site visit also should be noted. In addition, readily observable geologic, hydrologic, and topographic conditions should be identified, including any possibility of hazardous substances migrating on- or *offsite*.

Roads, water supplies, and sewage systems should be identified, as well as any storage tanks, whether above or below ground. If any hazardous substances or petroleum products are found, their type, quantity, and storage conditions should be noted. Any odors, pools of liquids, drums or other containers, and equipment likely to contain PCBs should be noted. Additionally, indoors, heating and cooling systems should be noted, as well as any stains, corrosion, drains, or sumps. Outdoors, any pits, ponds, lagoons, stained soil or pavement, stressed vegetation, solid waste, wastewater, and wells should be noted (ASTM, 1997).

## ***Conducting Interviews***

In addition to reviewing available records and visiting the site, conducting interviews with the site owner and/

or site manager, site occupants, and local **officials** is highly recommended to obtain information about the prior and/or current uses and conditions of the property, and to inquire about any useful documents that exist regarding the property. Such documents include environmental audit reports, environmental permits, registrations for storage tanks, material safety data sheets, community **right-to-know** plans, safety plans, government agency notices or correspondence, hazardous waste generator reports or notices, geotechnical studies, or any proceedings involving the property (ASTM, 1997). Interviews with at least one staff person from the following local government agencies are recommended: the **fire department**, health agency, and the agency with authority for hazardous waste disposal or other environmental matters. Interviews can be conducted in person, by telephone, or in writing.

ASTM Standard 1528 provides a questionnaire that may be appropriate for use in interviews for certain sites. ASTM suggests that this questionnaire be posed to the current property owner, any major occupant of the property (or at least 10 percent of the occupants of the property if no major occupant exists), or “any occupant likely to be using, treating, generating, storing, or disposing of hazardous substances or petroleum products on or from the property.” A user’s guide accompanies the ASTM questionnaire to assist the investigator in conducting interviews, as well as researching records and making site visits.

### ***Developing a Report***

Toward the end of the Phase I assessment, planners should develop a report that includes all of the important information obtained during record reviews, the site visit, and interviews. Documentation, such as references and important exhibits, should be included, as well as the credentials of the environmental professional that conducted the Phase I environmental site assessment. The report should include all information regarding the presence or likely presence of hazardous substances or petroleum products on the property and any conditions that indicate an existing, past, or potential release of such substances into property structures or into the ground, groundwater, or surface water of the property (ASTM, 1997). The report should include the environmental professional’s opinion of the impact of the presence or likely presence of any contaminants, and a findings and conclusion section that either indicates that the Phase I environmental site assessment revealed no evidence of contaminants in connection with the property, or discusses what evidence of contamination was found (ASTM, 1997).

Additional sections of the report might include a recommendations section (e.g., for a Phase II site assessment, if appropriate); and sections on the presence or absence of asbestos, lead paint, lead in drinking water, radon, and wetlands. Some states or financial institutions may require information on these substances.

If the Phase I site assessment adequately informs state and local officials, planners, community representatives, and other stakeholders that no contamination exists at the site, or that contamination is so minimal that it does not pose a health or environmental risk, then those involved may decide that adequate site assessment has been **accomplished** and the process of redevelopment may proceed. In some cases where evidence of contamination exists, stakeholders may decide that enough information is available from the Phase I site assessment to **characterize** the site and determine an appropriate approach for site cleanup of the contamination. In other cases, stakeholders may decide that additional site assessment is warranted, and a Phase II site assessment would be **conducted**, as described below.

### **Performing a Phase II Site Assessment: Sampling the Site**

A Phase II site assessment typically involves taking soil, water, and air samples to identify the types, quantity, and extent of contamination in these various environmental media. The types of data used in a Phase II site assessment can vary from existing site data (if adequate), to limited sampling of the site, to more extensive **contaminant-specific** or site-specific sampling data. Planners should use knowledge of past facility operations whenever possible to focus the site evaluation on those process areas where pollutants were stored; handled, used, or disposed. These will be the areas where potential contamination will be most readily identified. Generally, to minimize costs, a Phase II site assessment will begin with limited sampling (assuming readily available data do not exist that adequately characterize the type and extent of contamination on the site) and will proceed to more comprehensive sampling if needed (e.g., if the initial sampling could not identify the geographical limits of contamination).

This section explains the importance of setting Data Quality Objectives (DQOs) and provides brief guidance for doing so; describes screening levels to which sampling results can be compared; and provides an overview of environmental sampling and data analysis, including sampling methods and ways to increase data certainty.

---

## Setting Data Quality Objectives

EPA has developed a guidance document that describes key principals and best practices for brownfields site assessment quality assurance and quality control based on program experience. The document, *Quality Assurance Guidance for Conducting Brownfields Site Assessments* (EPA 540-R-98-038), is intended as a reference for people involved in the brownfields site assessment process and serves to inform managers of important quality assurance concepts.

EPA has adopted the Data Quality Objectives (DQO) Process (EPA 540-R-93-071) as a framework for making decisions. The DQO Process is common-sense, systematic planning tool based on the scientific method. Using a systematic planning approach, such as the DQO Process, ensures that the data collected to support defensible site decision making will be of sufficient quality and quantity, as well as be generated through the most cost-effective means possible. DQOs, themselves, are statements that unambiguously communicate the following:

- The study objective
- The most appropriate type of data to collect.
- The most appropriate conditions under which to collect the data.
- The amount of uncertainty that will be tolerated when making decisions.

It is important to understand the concept of uncertainty and its relationship to site decision making. Regulatory agencies, and the public they represent, want to be as confident as possible about the safety of reusing brownfields sites. Public acceptance of site decisions may depend on the site manager's being able to scientifically document the adequacy of site decisions. During negotiations with stakeholders, effective communication about the tradeoffs between project costs and confidence in the site decision can help set the stage for a project's successful completion. When the limits on uncertainty (e.g., only a 5, 10, or 20 percent chance of a particular decision error is permitted) are clearly defined in the project, subsequent activities can be planned so that data collection efforts will be able to support those confidence goals in a resource-effective manner. On the one hand, a manager would like to reduce the chance of making a decision error as much as possible, but on the other hand, reducing the chance of making that decision error requires collecting more data, which is, in itself, a costly process.

Striking a balance between these two competing goals—more scientific certainty versus less cost—requires careful thought and planning, as well as the application of professional expertise.

The following steps are involved in systematic planning:

1. *Agree on intended land reuse.* All parties should agree early in the process on the intended reuse for the property because the type of use may strongly influence the choice of assessment and cleanup approaches. For example, if the area is to be a park, removal of all contamination will most likely be needed. If the land will be used for a shopping center, with most of the land covered by buildings and parking lots, it may be appropriate to reduce, rather than totally remove, contaminants to specified levels (e.g., state cleanup levels; see "Site Cleanup" later in this document).
2. *Clarify the objective of the site assessment.* What is the overall decision(s) that must be made for the site? Parties should agree on the purpose of the assessment. Is the objective to confirm that no contamination is present? Or is the goal to identify the type, level, and distribution of contamination above the levels which are specified, based on the intended land use. These are two fundamentally different goals that suggest different strategies. The costs associated with each approach will also vary.

As noted above, parties should also agree on the total amount of uncertainty allowable in the overall decision(s). Conducting a risk assessment involves identifying the levels of uncertainty associated with characterization and cleanup decisions. A risk assessment involves identifying potential contaminants and analyzing the pathways through which people, other species of concern, or the environment can become exposed to those contaminants (see EPA 600-R-93-039 and EPA 540-R-095-132). Such an assessment can help identify the risks associated with varying the levels of acceptable uncertainty in the site decision and can provide decision-makers with greater confidence about their choice of land use decisions and the objective of the site assessment. If cleanup is required, a risk assessment can also help determine how clean the site needs to be, based on expected reuse (e.g., residential or industrial), to safeguard people from exposure to contaminants. For more information, see the section *Increasing the Cer-*

*tainty of Sampling Results* and the section *Site Cleanup*.

3. *Define the appropriate type(s) of data that will be needed to make an informed decision at the desired confidence level.* Parties should agree on the type of data to be collected by defining a preliminary list of suspected analytes, media, and analyte-specific action levels (screening levels). Define how the data will be used to make site decisions. For example, data values for a particular analyte may or may not be averaged across the site for the purposes of reaching a decision to proceed with work. Are there maximum values which a contaminant(s) cannot exceed? If found, will concentrations of contaminants above a certain action level (hotspots) be characterized and treated separately? These discussions should also address the types of analyses to be performed at different stages of the project. Planners and regulators can reach an agreement to focus initial characterization efforts in those areas where the preliminary information indicates potential sources of contamination may be located. It may be appropriate to analyze for a broad class of contaminants by less expensive screening methods in the early stages of the project in order to limit the number of samples needing analysis by higher quality, more expensive methods later. Different types of data may be used at different stages of the project to support interim decisions that efficiently direct the course of the project as it moves forward.
4. *Determine the most appropriate conditions under which to collect the data.* Parties should agree on the timing of sampling activities, since weather conditions can influence how representative the samples are of actual conditions.
5. *Identify appropriate contingency plans/actions.* Certain aspects of the project may not develop as planned. Early recognition of this possibility can be a useful part of the DQO Process. For example, planners, regulators, and other stakeholders can acknowledge that screening-level sampling may lead to the discovery of other contaminants on the site than were originally anticipated. During the DQO Process, stakeholders may specify appropriate contingency actions to be taken in the event that contamination is found. Identifying contingency actions early in the project can help ensure that the project will proceed even in light of new developments. The use of a dynamic workplan combined with the use of rapid turn-

around field analytical methods can enable the project to move forward with a minimum of time delays and wasted effort.

6. *Develop a sampling and analysis plan that can meet the goals and permissible uncertainties described in the proceeding steps.* The overall uncertainty in a site decision is a function of several factors: the number of samples across the site (the density of sample coverage), the heterogeneity of analytes from sample to sample (spatial variability of contaminant concentrations), and the accuracy of the analytical method(s). Studies have demonstrated that analytical variability tends to contribute much less to the uncertainty of site decisions than does sample variability due to matrix heterogeneity. Therefore, spending money to increase the sample density across the site will usually (for most contaminants) make a larger contribution to confidence in the site decision, and this be more cost-effective, than will spending money to achieve the highest data quality possible, but at a lower sampling density.

Examples of important consideration for developing a sampling and analysis plan include:

- Determine the sampling location placement that can provide an estimate of the matrix heterogeneity and thus address the desired certainty. Is locating hotspots of a certain size important? Can composite sampling be used to increase coverage of the site (and decrease overall uncertainty due to sample heterogeneity) while lowering analytical costs?
- Evaluate the available pool of analytical technologies/methods (both field methods and laboratory methods, which might be implemented in either a fixed or mobile laboratory) for those methods that can address the desired action levels (the analytical methods quantification limit should be well below the action level). Account for possible or expected matrix interferences when considering appropriate methods. Can field analytical methods produce data that will meet all of the desired goals when sampling uncertainty is also taken into account? Evaluate whether a combination of screening and definitive methods may produce a more cost-effective means to generate data. Can economy of scale be used? For example, the expense of a mobile

laboratory is seldom cost-effective for a single small site, but might be cost-effective if several sites can be characterized sequentially by a single mobile laboratory.

- When the sampling procedures, sample preparation and analytical methods have been selected, design a quality control protocol for each procedure and method that ensures that the data generated will be of known, defensible quality.
7. *Through a number of iterations, refine the sampling and analysis plan to one that can most cost-effectively address the decision-making needs of the site planner.*
  8. *Review agreements often.* As more information becomes available, some decisions that were based on earlier, limited information should be reviewed to see if they are still valid. If they are not, the parties can again use the DQO framework to revise and refine site assessment and cleanup goals and activities.

The data needed to support decision-making for brownfields sites generally are not complicated and are less extensive than those required for more heavily contaminated, higher-risk sites (e.g., Superfund sites). But data uncertainty may still be a concern at brownfields sites because knowledge of past activities at a site may be less than comprehensive, resulting in limited site characterization. Establishing DQOs can help address the issue of data uncertainty in such cases. Examples of DQOs include verifying the presence of soil contaminants, and assessing whether contaminant concentrations exceed screening levels.

### Screening Levels

In the initial stages of a Phase II site assessment an appropriate set of screening levels for contaminants in soil, water, and/or air should be established. Screening levels are risk-based benchmarks which represent concentrations of chemicals in environmental media that do not pose an unacceptable risk. Sample analyses of soils, water, and air at the facility can be compared with these benchmarks. If onsite contaminant levels exceed the screening levels, further investigation will be needed to determine if and to what extent cleanup is appropriate.

Some states have developed generic screening levels (e.g., for industrial and residential use). These levels may not account for site-specific factors that affect the concentration or migration of contaminants. Alternatively, screen-

ing levels can be developed using site-specific factors. While site-specific screening levels can more effectively incorporate elements unique to the site, developing site-specific standards is a time- and resource-intensive process. Planners should contact their state environmental offices and/or EPA regional offices for assistance in using screening levels and in developing site-specific screening levels.

Risk-based screening levels are based on calculations/models that determine the likelihood that exposure of a particular organism or plant to a particular level of a contaminant would result in a certain adverse effect. Risk-based screening levels have been developed for tap water, ambient air, fish, and soil. Some states or EPA regions also use regional background levels (or ranges) of contaminants in soil and Maximum Contaminant Levels (MCLs) in water established under the Safe Drinking Water Act as screening levels for some chemicals. In addition, some states and/or EPA regional offices<sup>4</sup> have developed equations for converting soil screening levels to comparative levels for the analysis of air and groundwater.

When a contaminant concentration exceeds a screening level, further site assessment (such as sampling the site at strategic locations and/or performing more detailed analysis) is needed to determine that: (1) the concentration of the contaminant is relatively low and/or the extent of contamination is small and does not warrant cleanup for that particular chemical, or (2) the concentration or extent of contamination is high, and that site cleanup is needed (see the section "Site Cleanup" for a discussion on cleanup levels).

Using state cleanup standards for an initial brownfields assessment may be beneficial if no industrial screening levels are available or if the site may be used for residential purposes. EPA's soil screening guidance is a tool developed by EPA to help standardize and accelerate the evaluation and cleanup of contaminated soils at sites on the NPL where future residential land use is anticipated. This guidance may be useful at corrective action or VCP sites where site conditions are similar. However, use of this guidance for sites where residential land use assumptions do not apply could result in overly conservative screening levels.

<sup>4</sup>For example, EPA Region 6 Human Health Media-Specific Screening Levels include air and groundwater levels based on soil screening levels for some chemicals.

---

## **Environmental Sampling and Data Analysis**

Environmental sampling and data analysis are integral parts of a Phase II site assessment process. Many different technologies are available to perform these activities, as discussed below.

### **Levels of Sampling and Analysis**

There are two levels of sampling and analysis: screening and contaminant-specific. Planners are likely to use both at different stages of the site assessment.

*Screening.* Screening sampling and analysis use relatively low-cost technologies to take a limited number of samples at the most likely points of contamination and analyze them for a limited number of parameters. Screening analyses often test only for broad classes of contaminants, such as total petroleum hydrocarbons, rather than for specific contaminants, such as benzene or toluene. Screening is used to narrow the range of areas of potential contamination and reduce the number of samples requiring further, more costly, analysis. Screening is generally performed on site, with a small percentage of samples (e.g., generally 10 percent) submitted to a state-approved laboratory for a full organic and inorganic screening analysis to validate or clarify the results obtained.

Some geophysical methods are used in site assessments because they are noninvasive (i.e., do not disturb environmental media as sampling does). Geophysical methods are commonly used to detect underground objects that might exist at a site, such as USTs, dry wells, and drums. The two most common and cost-effective technologies used in geophysical surveys are ground-penetrating radar and electromagnetics. An overview of geophysical methods is presented in Table 2. Geophysical methods are discussed in *Subsurface Characterization and Monitoring Techniques: A Desk Reference Guide* (EPA/625/R-93003a).

*Contaminant-specific.* For a more in-depth understanding of contamination at a site (e.g., when screening data are not detailed enough), it may be necessary to analyze samples for specific contaminants. With contaminant-specific sampling and analysis, the number of parameters analyzed is much greater than for screening-level sampling, and analysis includes more accurate, higher-cost field and laboratory methods. Such analyses may take several weeks.

Computerization, microfabrication and biotechnology have permitted the recent development of analytical equipment that can be generated in the field, on-site in a mobile laboratory and off-site in a laboratory. The same kind of equipment might be used in two or more locations

### **Increasing the Certainty of Sampling Results**

One approach to reducing the level of uncertainty associated with site data is to implement a statistical sampling plan. Statistical sampling plans use statistical principles to determine the number of samples needed to accurately represent the contamination present. With the statistical sampling method, samples are usually analyzed with highly accurate laboratory or field technologies, which increase costs and take additional time. Using this approach, planners can negotiate with regulators and determine in advance specific measures of allowable uncertainty (e.g., an 80 percent level of confidence with a 25 percent allowable error).

Another approach to increasing the certainty of sampling results is to use lower-cost technologies with higher detection limits to collect a greater number of samples. This approach would provide a more comprehensive picture of contamination at the site, but with less detail regarding the specific contamination. Such an approach would not be recommended to identify the extent of contamination by a specific contaminant, such as benzene, but may be an excellent approach for defining the extent of contamination by total organic compounds with a strong degree of certainty. Planners will find that there is a trade-off between scope and detail. Performing a limited number of detailed analyses provides good detail but less certainty about overall contamination, while performing a larger number of general analyses provides less detail but improves the understanding and certainty of the scope of contamination.

### **Site Assessment Technologies**

This section discusses the differences between using field and laboratory technologies and provides an overview of applicable site assessment technologies. In recent years, several innovative technologies that have been field-tested and applied to hazardous waste problems have emerged. In many cases, innovative technologies may cost less than conventional techniques and can successfully provide the needed data. Operating conditions may affect the cost and effectiveness of individual technologies.

**Table 2.** Non-Invasive Assessment Technologies

Applications	Strengths	Weaknesses	Typical Costs <sup>1</sup>
<b>Infrared Thermography (IR/T)</b> <ul style="list-style-type: none"> <li>• Locates buried USTs.</li> <li>• Locates buried leaks from USTs.</li> <li>• Locates buried sludge pits.</li> <li>• Locates buried nuclear and nonnuclear waste.</li> <li>• Locates buried oil, gas, chemical and sewer pipelines.</li> <li>• Locates buried oil, gas, chemical and sewer pipeline leaks.</li> <li>• Locates water pipelines.</li> <li>• Locates water pipeline leaks.</li> <li>• Locates seepage from waste dumps.</li> <li>• Locates subsurface smoldering fires in waste dumps.</li> <li>• Locates unexploded ordinance on hundreds or thousands of acres.</li> <li>• Locates buried landmines.</li> </ul>	<ul style="list-style-type: none"> <li>• Able to collect data on large areas very efficiently. (Hundreds of acres per flight)</li> <li>• Able to collect data on long cross country pipelines very efficiently (300500 miles per day.)</li> <li>• Low cost for analyzed data per acre unit.</li> <li>• Able to <b>prescreen</b> and eliminate clean areas from further costly testing and unneeded rehabilitation.</li> <li>• Able to fuse data with other techniques for even greater accuracy in more situations.</li> <li>• Able to locate <b>large</b> and small leaks in pipelines and USTs. (Ultrasonic devices can only locate small, high pressure leaks containing ultrasonic noise.)</li> <li>• No direct contact with objects under test is required. (Ultrasonic devices must be in contact with buried pipelines or USTs.)</li> <li>• Has confirmed anomalies to depths greater than 38 feet with an accuracy of better than 80%.</li> <li>• Tests can be performed during both daytime and nighttime hours.</li> <li>• Normally no inconvenience to the public.</li> </ul>	<ul style="list-style-type: none"> <li>• Cannot be used In rainy conditions.</li> <li>• Cannot be used to determine depth or thickness of anomalies.</li> <li>• Cannot determine what specific anomalies are detected.</li> <li>• Cannot be used to detect a specific fluid or contaminant, but all items not native to the area will be detected.</li> </ul>	<ul style="list-style-type: none"> <li>• Depends upon volume of data collected and type of targets looked for.</li> <li>• Small areas &lt;1 acre: \$1 ,000-\$3,500</li> <li>• Large areas &gt;1,000 acres: \$10 - \$200 per acre</li> </ul>
<b>Ground Penetrating Radar (GPR)</b> <ul style="list-style-type: none"> <li>• Locates buried USTs.</li> <li>• Locates buried leaks from USTs.</li> <li>• Locates buried sludge pits.</li> <li>• Locates buried nuclear and nonnuclear waste.</li> <li>• Locates buried oil, gas, chemical and sewer pipelines.</li> <li>• Locates buried oil and chemical pipeline leaks.</li> <li>• Locates water pipelines.</li> <li>• Locates water pipeline leaks.</li> <li>• Locates seepage from waste dumps.</li> <li>• Locates cracks in subsurface strata such as limestone.</li> </ul>	<ul style="list-style-type: none"> <li>• Can Investigate depths from 1 centimeter to 100 meters+ depending upon soil or water conditions.</li> <li>• Can locate small voids capable of holding contamination wastes.</li> <li>• Can determine different types of materials such as steel, fiberglass or concrete.</li> <li>• Can be trailed behind a vehicle and travel at high speeds.</li> </ul>	<ul style="list-style-type: none"> <li>• Cannot be used in highly conductive environments such as salt water. Cannot be used in heavy clay soils.</li> <li>• Data are difficult to Interpret and require a lot of experience.</li> </ul>	<ul style="list-style-type: none"> <li>• Depends upon volume of data collected and type of targets looked for.</li> <li>• Small areas &lt;1 acre: \$3,500 - \$5,000</li> <li>• Large areas &gt; 10 acres: \$2,500 - \$3,500 per acre</li> </ul>

<sup>1</sup> Cost- based on case study data in 1997 dollars.



Table 2. Continued

Applications	Strengths	Weaknesses	Typical Costs <sup>1</sup>
<b>Electromagnetic Offset Logging (EOL)</b> <ul style="list-style-type: none"> <li>• Locates buried hydrocarbon pipelines</li> <li>• Locates buried hydrocarbon USTs.</li> <li>• Locates hydrocarbon tanks.</li> <li>• Locates hydrocarbon barrels.</li> <li>• Locates perched hydrocarbons.</li> <li>• Locates free floating hydrocarbons.</li> <li>• Locates dissolved hydrocarbons.</li> <li>• Locates sinker hydrocarbons.</li> <li>• Locates buried well casings.</li> </ul>	<ul style="list-style-type: none"> <li>• Produces 3D images of hydrocarbon plumes.</li> <li>• Data can be collected to depth of 100 meters.</li> <li>• Data can be collected from a single, unlined or nonmetal lined well hole.</li> <li>• Data can be collected within a 100 meter radius of a single well hole.</li> <li>• 3D images can be sliced in horizontal and vertical planes.</li> <li>• DNAPLs can be imaged.</li> </ul>	<ul style="list-style-type: none"> <li>• Small dead area around well hole of approximately 8 meters. This can be eliminated by using 2 complementary well holes from which to collect data.</li> </ul>	<ul style="list-style-type: none"> <li>• Depends upon volume of data collected and type of targets looked for</li> <li>• Small areas &lt; 1 acre: \$10,000 - \$20,000</li> <li>• Large areas &gt; 10 acres: \$5,000 - \$10,000 per acre</li> </ul>
<b>Magnetometer (MG)</b> <ul style="list-style-type: none"> <li>• Locates buried ferrous materials such as barrels, pipelines, USTs, and buckets.</li> </ul>	<ul style="list-style-type: none"> <li>• Low cost instruments can be used that produce results by audio signal strengths.</li> <li>• High cost instruments can be used that produce hard copy printed maps of targets.</li> <li>• Depths to 3 meters. 1 acre per day typical efficiency in data collection.</li> </ul>	<ul style="list-style-type: none"> <li>• Non-relevant artifacts can be confusing to data analyzers.</li> <li>• Depth limited to 3 meters.</li> </ul>	<ul style="list-style-type: none"> <li>• Depends upon volume of data collected and type of targets looked for</li> <li>• Small areas &lt; 1 acre: \$2,500 - \$5,000</li> <li>• Large areas &gt; 10 acres: \$1,500 - \$2,500 per acre</li> </ul>

<sup>1</sup> Cost based on case study data in 1997 dollars.

### Field versus Laboratory Analysis

The principal advantages of performing field sampling and field analysis are that results are immediately available and more samples can be taken during the same sampling event; also, sampling locations can be adjusted immediately to clarify the first round of sampling results if warranted. This approach may reduce costs associated with conducting additional sampling events after receipt of laboratory analysis. Field assessment methods have improved significantly over recent years; however, while many field technologies may be comparable to laboratory technologies, some field technologies may not detect contamination at levels as low as laboratory methods, and may not be contaminant-specific. To validate the field results or to gain more information on specific contaminants, a small percentage of the samples can be sent for laboratory analysis. The choice of sampling and analytical procedures should be based on DQOs established earlier in the process, which determine the quality (e.g., precision, level of detection) of the data needed to adequately evaluate site conditions and identify appropriate cleanup technologies.

### Sample Collection and Analysis Technologies

Tables 3 and 4 list sample collection technologies for oil/subsurface and groundwater that may be appropriate for metal finishing brownfields sites. Technology selection depends on the medium being sampled and the type of analysis required, based on DQOs (see the section on this subject earlier in this document). Soil samples are generally collected using spoons, scoops, and shovels. The selection of a subsurface sample collection technology depends on the subsurface conditions (e.g., consolidated materials, bedrock), the required sampling depth and level of analysis, and the extent of sampling. Anticipated For example, if subsequent sampling efforts are likely, then installing semi-permanent well casings with a well-drilling rig may be appropriate. If limited sampling is expected, direct push methods, such as cone penetrometers, may be more 'cost-effective. The types of contaminants will also play a key role in the selection of sampling methods, devices, containers, and preservation techniques.

Table 5 lists analytical technologies that may be appropriate for assessing metal finishing sites, the types of contamination they can measure, applicable environmental media, and the relative cost of each. The final two col-

**Table 3.** Soil and Subsurface Sampling Tools

Technique/ Instrumentation	Media		Relative Cost per Sample	Sample Quality
	Soil	Ground Water		
<b>Drilling Methods</b>				
<b>Cable Tool</b>	X	X	Mid-range expensive	Soil properties will most likely be altered
Casing Advancement	X	X	Most expensive	Soil properties will likely be altered
Direct Air Rotary with Rotary Bit/ Downhole Hammer	X	X	Mid-range expensive	Soil properties will most likely be altered
Direct Mud Rotary	X	X	Mid-range expensive	Soil properties may be altered
Directional Drilling	X	X	Most expensive	Soil properties may be altered
<b>Hollow-Stem Auger</b>	X	X	Mid-range expensive	Soil properties may be altered
Jetting Methods	X	X	Least expensive	Soil properties may be altered
Rotary Diamond Drilling	X	X	Most expensive	Soil properties may be altered
Rotating Core	X		Mid-range expensive	Soil properties may be altered
Solid Flight and Bucket Augers	X	X	Mid-range expensive	Soil properties will likely be altered
Sonic Drilling	X	X	Most expensive	Soil properties will most likely not be altered
<b>Split and Solid Barrel</b>	X		Least expensive	Soil properties may be altered
<b>Thin-Wall Open Tube</b>	X		Mid-range expensive	Soil properties will most likely not be altered
Thin-Wall Piston/ Specialized Thin Wall	X		Mid-range expensive	Soil properties will most likely not be altered
<b>Direct Push Methods</b>				
Cone Penetrometer	X	X	Mid-range expensive	Soil properties may be altered
Driven Wells		X	Mid-range expensive	Soil properties may be altered
<b>Hand-Held Methods</b>				
Augers	X	X	Least expensive	Soil properties may be altered
Rotating Core	X		Mid-range expensive	Soil properties may be altered
<b>Scoop, Spoons, and Shovels</b>	X		Least expensive	Soil properties may be altered
<b>Split and Solid Barrel</b>	X		Least expensive	Soil properties may be altered
<b>Thin-Wall Open Tube</b>	X		Mid-range expensive	Soil properties will most likely not be altered
Thin-Wall Piston/ Specialized Thin Wall	X		Mid-range expensive	Soil properties will most likely not be altered
Tubes	X		Least expensive	Soil properties will most likely not be altered

**Bold** - Most commonly used field techniques

Table 4. Groundwater Sampling Tools

Technique/ Instrumentation	Contaminants <sup>†</sup>	Relative Cost per Sample	Sample Quality
<b>Portable Grab Samplers</b>			
Bailers	VOCs, metals	Least expensive	Liquid properties may be altered
Pneumatic Depth-Specific Samplers	VOCs, metals	Mid-range expensive	Liquid properties will most likely not be altered
<b>Portable <i>In Situ</i> Groundwater Samplers/Sensors</b>			
Cone Penetrometer Samplers	VOCs, metals	Least expensive	Liquid properties will most likely not be altered
Direct Drive Samplers	VOCs, metals	Least expensive	Liquid properties will most likely not be altered
Hyclopunch	VOCs, metals	Mid-range expensive	Liquid properties will most likely not be altered
<b>Fixed <i>In Situ</i> Samplers</b>			
Multilevel Capsule Samplers	VOCs, metals	Mid-range expensive	Liquid properties will most likely not be altered
Multiple-Port Casings	VOCs, metals	Least expensive	Liquid properties will most likely not be altered
Passive Multilayer Samplers	VOCs	Least expensive	Liquid properties will most likely not be altered

**Bold** Most commonly used field techniques

**VOCs** Volatile Organic Carbons

<sup>†</sup> See Figure 1 for an overview of site locations where these contaminants may typically be found.

umns of the table contain the applicability (e.g., field and/or laboratory) of analytical methods and the technology's ability to generate quantitative versus qualitative results. Less expensive technologies that have rapid turnaround times and produce only qualitative results generally should be sufficient for many brownfields sites.

### Additional Considerations for Assessing Metal Finishing Sites

When assessing a metal finishing brownfields site, planners should focus on the most likely areas of contamination. Although the specific locations vary from site to site, this section provides some general guidelines.

#### Where to Sample

Most metal finishing facilities perform all operations indoors. Consequently, most site assessment activities should focus on contamination inside and underneath the facility. Outdoor assessment activities should evaluate points where drain pipes may have carried contaminated wastewater or spilled materials.

The typical metal finishing facility is comprised of one or more large, warehouse-type buildings that contain the bath tanks, chemical storage areas, and wastewater treatment system. The floors are likely to be a continuous

concrete slab containing several drains leading to a central storm drain or sewer access. In most older facilities, the feed lines from bath to wastewater tanks are underneath the floor slab. In newer facilities, the bath tanks and/or the wastewater tanks will likely be partially submerged in the floor slab and positioned directly on the ground.

A visual inspection of the site should identify the most likely points of potential contaminant releases. These include the areas surrounding:

- Floor drains in chemical storage and process bath areas
- Sludges left in process bath and wastewater treatment tanks
- Pipes underneath the floor slab
- Tanks set through the floor slab
- Cracks in floor or stains in low spots in the floor

Solvents can be highly mobile on release, and can seep into and through the concrete flooring, which is porous. The inspection of the facility floor should look not only

Table 5. Sample Analysis Technologies

Technique/ Instrumentation	Analytes	Soil	Media Ground Water	Gas	Relative Detection	Relative Cost per Analysis	Application"	Produces Quantitative Data
<b>Metals</b>								
Laser-Induced Breakdown Spectrometry	Metals	X			ppb	Least expensive	Usually used in field	Additional e f f o r t required
Titrimetry Kits	Metals	X	X		ppm	Least expensive	Usually used in laboratory	Additional effort required
Particle-Induced X-ray Emissions	Metals	X	X		ppm	Mid-range expensive	Usually used in laboratory	Additional effort required
Atomic Adsorption Spectrometry	Metals	X*	X	X	ppb	Most expensive	Usually used in laboratory	Yes
Inductively Coupled Plasma-Atomic Emission Spectroscopy	Metals	X	X	X	ppb	Most expensive	Usually used in laboratory	Yes
Field Bioassessment	Metals	X	X			Most expensive	Usually used in field	No
X-Ray Fluorescence	Metals	X	X	X	ppm	Least expensive	Laboratory and field	Yes (limited)
<b>VOCs</b>								
Chemical Calorimetric Kits	VOCs	X	X		ppm	Least expensive	Can be used In field, usually used In laboratory	Additional effort required
Flame Ionization Detector (hand-held)	VOCs	X	X	X	ppm	Least expensive	Immediate, can be used in field	No
Explosimeter	VOCs	X	X*	X	ppm	Least expensive	Immediate, can be used in field	No
Photo Ionization Detector (hand-held)	VOCs,	X	X	X	ppm	Least expensive	Immediate, can be used in field	No
Catalytic Surface Oxidation	VOCs	X*	X	X	ppm	Least expensive	Usually used in laboratory	No
Near IR Reflectance/Trans Spectroscopy	VOCs	X			100-l ,000 ppm	Mid-range expensive	Usually used In laboratory	Additional effort required
ion Mobility Spectrometer	VOCs	X*	X'	X	100-l ,000 ppb	Mid-range expensive	Usually used in laboratory	Yes
Raman Spectroscopy/SERS	VOCs	X	X	X*	ppb	Mid-range expensive	Usually used in laboratory	Additional effort required

VOCs Volatile Organic Compounds

X\* Indicates there must be extraction of the sample to gas or liquid phase

\* Samples sent to laboratory require shipping time and usually 14 to 35 days turnaround time for analysis. Rush orders cost an additional amount per sample.

(continued)

Table 5. Continued

Technique/ Instrumentation	Analytes	Soil	Media Ground Water	Gas	Relative Detection	Relative Cost per Analysis	Application"	Produces Quantitative Data
Infrared Spectroscopy	VOCs	X	X	X	100-l ,000 ppm	Mid-range expensive	Usually used in laboratory	Additional effort required
Scattering/Absorption Lidar	VOCs	X*	X	X	100-i ,000 ppm	Mid-range expensive	Usually used in laboratory	Additional effort required
FTIR Spectroscopy	VOCs	X	X	X	ppm	Mid-range expensive	Laboratory and field	Additional effort required
Synchronous Luminescence/ Fluorescence	VOCs	X	X		ppb	Mid-range expensive	Usually used in laboratory, can be used in field	Additional effort required
Gas Chromatography (GC) (can be used with numerous detectors)	VOCs	X*	X	X	ppb	Mid-range expensive	Usually used in laboratory, can be used in field	Yes
UV-Visible Spectrophotometry	VOCs	X	X	X	ppb	Mid-range expensive	Usually used in laboratory	Additional effort required
UV Fluorescence	VOCs	X	X	X	ppb	Mid-range expensive	Usually used in laboratory	Additional effort required
Ion Trap	VOCs	X	X*	X	ppb	Most expensive	Laboratory and field	Yes
Other Chemical Reaction- Based Test Papers	VOCs, Metals	X	X		ppm	Least expensive	Usually used In field	Yes
immunoassay and Calorimetric Kits	VOCs, Metals	X	X		ppm	Least expensive	Usually used in laboratory, can be used in field	Additional effort required

VOCs Volatile Organic Compounds

SVOCs Semivolatile Organic Compounds (may be present in oil and grease)

PAHs Polyaromatic Hydrocarbons

X\* Indicates there must be extraction of the sample to gas or liquid phase

\* Samples sent to laboratory require shipping time and usually 14 to 35 days turnaround time for analysis, Rush orders cost an additional amount per sample.

for cracks through which solvents could migrate, but also for stained areas where spilled solvents may have pooled. Wipe samples should be taken along the walls of the facility, as solvent vapors may have penetrated wall materials.

Since metal finishing operations are typically conducted inside the facility, outside points of potential release are likely to be limited to:

\* Points of discharge from effluent pipes

. Waterways, canals, and ditches at points of pipe discharge

\* Areas where process bath materials may have been dumped

While discharge points may be visually obvious, areas of dumping may be less apparent. Often these areas are marked by stained soils and a lack of vegetation. Low-lying areas should also be investigated, as they make natu-

ral dumping areas and contaminants may drain to these points.

### ***How Many Samples to Collect***

Samples should be taken in and around the areas of potential release mentioned above. Planners should expect that two to three samples will be required in each area, depending on DQOs. A cost-effective approach is to perform screening analyses using field methods on all samples and then to submit one sample to a laboratory for analysis by an accepted EPA method. Although the screening analyses can be conducted for broad contaminant groups, such as total organics, a contaminant-specific analysis should be conducted as a full screen for organic and inorganic contaminants and to validate the screening analyses. Contaminant-specific analyses may be conducted either in the field using appropriate technologies and protocols or in a laboratory.

### ***What Types of Analysis to Perform***

The selection of analytical procedures will be based on the DQOs established. Generally, the following analyses may be appropriate at metal finishing sites:

- Residuals taken from drain sumps in storage areas should be screened for total organics and acids. Screening analyses for these contaminants can be performed inexpensively using a photo ionization detector (PID) or flame ionization detector (FID) for total organics.
- Residuals taken from drains in the process and wastewater treatment areas should be screened for a similar range of organic contaminants, but additional analyses should be performed to screen for the presence of inorganic contaminants, such as the metals used in the metal finishing process. Immunoassays are an inexpensive field technology that can be used to perform the screening analyses for organic contaminants and mercury. X-ray fluorescence (XRF) is another innovative technology that can be used to perform either field or laboratory analyses.
- Soil gas should be collected at points underneath the floor slab, particularly near any tanks that are set through the floor slab, to detect the presence of solvents and other organic contaminants. These samples can be analyzed with the PID/FID technology described above. Corings of the floor slab may need to be taken and sent to a laboratory to determine if contaminants have penetrated floor slabs.

- Wipe samples taken from walls should be analyzed for organic compounds. These analyses can be performed using the same technologies that are used to analyze residuals samples.
- Soils and sediments at points of pipe discharge should be screened for both organic and inorganic contaminants using the PID/FID technology. XRF can be used for field or laboratory analyses.
- Water samples collected in swales, canals, and ditches should be screened for organics. Inorganic contamination can sometimes be detected in water samples, but conditions do not always allow it.

In addition, as discussed earlier, many older structures contain lead paint and asbestos insulation and tiling. Numerous kits are readily available to test for lead paint. Experienced professionals may be able to visually identify asbestos insulation, but specialized equipment may be needed to confirm the presence of asbestos in other areas. Core or wipe samples can be analyzed for asbestos using polarized light microscopy (PLM). Local and state laws regarding lead and asbestos should be consulted to determine how they may affect the selection of DQOs, sampling, and analysis.

### ***General Sampling Costs***

Site assessment costs vary widely, depending on the nature and extent of the contamination and the size of the sampling area. The sample collection costs discussed below are based on an assumed labor rate of \$35 per hour plus \$10 per sample for shipping and handling.

### ***Soil Collection Costs***

Surface soil samples can be collected with tools as simple as a stainless steel spoon, shovel, or hand auger. Samples can be collected using hand tools in soft soil for as low as \$10 per sample (assuming that a field technician can collect 10 samples per hour). When soils are hard, or deeper samples are required, a hammer-driven split spoon sampler or a direct push rig is needed. Using a drill rig equipped with a split spoon sampler or a direct push rig typically costs more than \$600 per day for rig operation (Geoprobe, 1998), with the cost per sample exceeding \$30 (assuming that a field technician can collect 2 samples per hour). Labor costs generally increase when heavy machinery is needed.

### ***Groundwater Sampling Costs***

Groundwater samples can be extracted through conventional drilling of a permanent monitoring well or using

the direct push methods listed in Table 3. The conventional, hollow stem auger-drilled monitoring well is more widely accepted but generally takes more time than direct push methods. Typical quality assurance protocols for the conventional monitoring well require the well to be drilled, developed, and allowed to achieve equilibrium for 24 to 48 hours. After the development period, a groundwater sample is extracted. With the direct push sampling method, a probe is either hydraulically pressed or vibrated into the ground, and groundwater percolates into a sampling container attached to the probe. The direct push method costs are contingent upon the hardness of the subsurface, depth to the water table, and permeability of the aquifer. Costs for both conventional and direct push techniques are generally more than \$40 per sample (assuming that a field technician can collect 1 sample per hour); well installation costs must be added to that number.

### ***Surface Water and Sediment Sampling costs***

Surface water and sediment sampling costs depend on the location and depth of the required samples. Obtain-

ing surface water and sediment samples can cost as little as \$30 per sample (assuming that a field technician can collect 2 samples per hour). Sampling sediment in deep water or sampling a deep level of surface water, however, requires the use of larger equipment, which drives up the cost. Also, if surface water presents a hazard during sampling and protective measures are required, costs will increase greatly.

### ***Sample Analysis Costs***

Costs for analyzing samples in any medium can range from as little as \$27 per sample for a relatively simple test (e.g., an immunoassay test for metals) to greater than \$400 per sample for a more extensive analysis (e.g., for semivolatiles) and up to \$1,200 per sample for dioxins (Robbat, 1997). Major factors that affect the cost of sample analysis include the type of analytical technology used, the level of expertise needed to interpret the results, and the number of samples to be analyzed. Planners should make sure that laboratories that have been certified by state programs are used; contact your state environmental agency for a list of state certified laboratories.

---

## Chapter 4

### Site Cleanup

The purpose of this section is to guide planners in the selection of appropriate cleanup technologies. the principal factors that will influence the selection of a cleanup technology include:

- Types of contamination present
- Cleanup and reuse goals
- Length of time required to reach cleanup goals
- Post-treatment care needed
- Budget

The selection of appropriate cleanup technologies often involves a trade-off between time and cost. A companion EPA document, entitled *Cost Estimating Tools and Resources for Addressing Sites Under the Brownfields Initiative*, provides information on cost factors and developing cost estimates. In general, the more intensive the cleanup approach, the more quickly the contamination will be mitigated and the more costly the effort. In the case of brownfields cleanup, this can be a major point of concern, considering the planner's desire to return the facility to the point of reuse as quickly as possible. Thus, the planner may wish to explore a number of options and weigh carefully the costs and benefits of each. One effective method of comparison is the cleanup plan, as discussed below. Planners should involve stakeholders in the community in the development of the cleanup plan.

The intended future use of a brownfields site will drive the level of cleanup needed to make the site safe for redevelopment and reuse. Brownfields sites are by definition not Superfund NPL sites; that is, brownfields sites usually have lower levels of contamination present and therefore generally require less extensive cleanup efforts than Superfund NPL sites. Nevertheless, all potential pathways of exposure, based on the intended reuse of the site, must be addressed in the site assessment and cleanup; if no pathways of exposure exist, less cleanup (or possibly none) may be required.

Some regional EPA and state offices have developed cleanup standards for different chemicals, which may serve as guidelines or legal requirements for cleanups. It is important to understand that screening levels (discussed in the section on "Performing a Phase II Site Assessment" above) are different from cleanup levels. Screening levels indicate whether further site investigation is warranted for a particular contaminant. Cleanup levels indicate whether cleanup action is needed and how extensive it needs to be. Planners should check with their state environmental office for guidance and/or requirements for cleanup standards.

This section contains information on developing a cleanup plan; various alternatives for addressing contamination at the site (i.e., institutional controls and containment and cleanup technologies); using different technologies for cleaning up metal finishing sites, including a summary table of technologies; and post-construction issues that planners need to consider when considering alternatives.

#### Developing a Cleanup Plan

If the results of the site evaluation indicate the presence of contamination above acceptable levels, planners will need to have a cleanup plan developed by a professional environmental engineer that describes the approach that will be used to contain and possibly cleanup the contamination present at the site. In developing this plan, planners and their engineers should consider a range of possible options, with the intent of identifying the most cost-effective approaches for cleaning up the site, given time and cost concerns. The cleanup plan can include the following elements:

- A clear delineation of environmental concerns at the site. Areas should be discussed separately if the cleanup approach for an area is different than that for other areas of the site. Clear documentation of existing conditions at the site and a summarized assessment of the nature and scope of contamination should be included.



- A recommended cleanup approach for each environmental concern that takes into account expected land reuse plans and the adequacy of the technology selected.
- A cost estimate that reflects both expected capital and operating/maintenance costs.
- Post-construction maintenance requirements for the recommended approach.
- A discussion of the assumptions made to support the recommended cleanup approach, as well as the limitations of the approach.

Planners can use the framework developed during the initial site evaluation (see the section on “Site Assessment” above) and the controls and technologies described below to compare the effectiveness of the least costly approaches for meeting the required cleanup goals established in the DQOs. These goals should be established at levels that are consistent with the expected reuse plans. A final cleanup plan may include a combination of actions, such as institutional controls, containment technologies, and cleanup technologies, as discussed below.

### ***Institutional Controls***

Institutional controls may play an important role in returning a metal finishing brownfields site to a marketable condition. Institutional controls are mechanisms that control the current and future use of, and access to, a site. They are established, in the case of brownfields, to protect people from possible contamination. Institutional controls can range from a security fence prohibiting access to a certain portion of the site to deed restrictions imposed on the future use of the site. If the overall cleanup approach does not include the complete cleanup of the facility (i.e., the complete removal or destruction of onsite contamination), a deed restriction will likely be required that clearly states that hazardous waste is being left in place within the site boundaries. Many state brownfields programs include institutional controls.

### ***Containment Technologies***

Containment technologies, in many instances, will be the likely cleanup approach for landfilled waste and wastewater lagoons (after contaminated wastewaters have been removed) at metal finishing facilities. The purpose of containment is to reduce the potential for offsite migration of contaminants and, possible subsequent exposure. Containment technologies include engineered barriers such as caps for contaminated soils, slurry walls, and hydraulic containment. Often, soils contaminated with

metals can be solidified by mixing them with cement-like materials, and the resulting stabilized material can be stored onsite in a landfill. Like institutional controls, containment technologies do not remove or destroy contamination, but mitigate potential risk by limiting access to it.

If contamination is found underneath the floor slab at metal finishing facilities, leaving the contaminated materials in place and repairing any damage to the floor slab may be justified. The likelihood that such an approach will be acceptable to regulators will depend on whether potential risk can be mitigated and managed effectively over the long term. In determining whether containment is feasible, planners should consider:

- *Depth to groundwater.* Planners should be prepared to prove to regulators that groundwater levels will not rise, due to seasonal conditions, and come into contact with contaminated soils.
- *Soil types.* If contaminants are left in place, the native soils should not be highly porous, as are sandy or gravelly soils, which enable contaminants to migrate easily. Clay and fine silty soils provide a much better barrier.
- *Surface water control.* Planners should be prepared to prove to regulators that rainwater and snowmelt cannot infiltrate under the floor slab and flush the contaminants downward.
- *Volatilization of organic contaminants.* Regulators are likely to require that air monitors be placed inside the building to monitor the level of organics that may be escaping upward through the floor and drains.

### ***Types of Cleanup Technologies***

Cleanup may be required to remove or destroy onsite contamination if regulators are unwilling to accept the level of contamination present or if the types of contamination are not conducive to the use of institutional controls or containment technologies. Cleanup technologies fall broadly into two categories—*ex situ* and *in situ*, as described below.

- *Ex Situ.* An *ex situ* technology treats contaminated materials after they have been removed and transported to another location. After treatment, if the remaining materials, or residuals, meet cleanup goals, they can be returned to the site. If the residuals do not yet meet cleanup goals, they can be subjected to further treatment, contained onsite, or moved to another location for storage or further treatment. A cost-effective approach to cleaning up a metal finishing

---

brownfields site may be the partial treatment of contaminated soils or groundwater, followed by containment, storage, or further treatment **offsite**. For example, it is common practice for operating metal finishing facilities to treat wastewaters to an intermediate level and then send the treated water to the local POTW.

- **In Situ.** The use of *in situ* technologies has increased dramatically in recent years. *In situ* technologies treat contamination in place and are often innovative technologies. Examples of *in situ* technologies include bioremediation, soil flushing, oxygen releasing compounds, air sparging, and treatment walls. In some cases, *in situ* technologies are feasible, cost-effective choices for the types of contamination that are likely at metal finishing sites. Planners, however, do need to be aware that cleanup with *in situ* technologies is likely to take longer than with *ex situ* technologies.

Maintenance requirements associated with *in situ* technologies depend on the technology used and vary widely in both effort and cost. For example, containment technologies such as caps and liners will require regular maintenance, such as maintaining the vegetative cover and performing periodic inspections to ensure the long-term integrity of the cover system. Groundwater treatment systems will require varying levels of post-cleanup care. If an *ex situ* system is in use at the site, it will require regular operations support and periodic maintenance to ensure that the system is operating as designed.

### **Cleanup Technology Options for Metal Finishing Sites**

Table 6 presents the technologies that may be appropriate for use at metal finishing sites, depending on their capital and operating costs. In addition to more conventional technologies, a number of innovative technology options are listed. Many possible cleanup approaches use institutional controls and one or a combination of the tech-

nologies described in Table 6. Whatever cleanup approach is ultimately chosen, planners should explore a number of cost-effective options.

Cleanup at metal **finishing** facilities will most likely entail removing a complex mix of contaminants, primarily organic solvents and metals. The cleanup will usually require more than one technology, or treatment train, because single technologies tend not to address both metal and organic contaminants. Solidification/stabilization can address metal contamination by limiting mobility (solubility) and thereby limit risk. Approaches at metal finishing sites depend on local conditions. At larger metal finishing sites, one approach may be to excavate and stabilize the contaminated material with either **onsite** or **off-site** disposal or treatment of material. Access to contaminated soils may be limited at smaller sites requiring excavation and **offsite** treatment or disposal. The stabilized material can be placed **onsite** or sent to an EPA-approved landfill (Subtitle C for hazardous materials, otherwise, Subtitle D).

### **Post-Construction Care**

Many of the cleanup technologies that leave contamination **onsite**, either in containment systems or because of the long periods required to reach cleanup goals, will require long-term maintenance and possibly operation. If waste is left **onsite**, regulators will likely require long-term monitoring of applicable media (i.e., soil, water, and/or air) to ensure that the cleanup approach selected is continuing to function as planned (e.g., residual contamination, if any, remains at acceptable levels and is not migrating). If long-term monitoring is required (e.g., by the state), periodic sampling, analysis, and reporting requirements will also be involved. Planners should be aware of these requirements and provide for them in cleanup budgets. Post-construction sampling, analysis, and reporting costs in their cleanup budgets can be a significant problem as these costs can be substantial.

Table 6. Cleanup Technologies for Metal Finishing Brownfields Sites

Applicable Technology	Description	Examples of Applicable Land/Process Areas <sup>1</sup>	Contaminants Treated by This Technology	Limitations	cost
<b>Containment Technologies</b>					
Sheet Piling	<ul style="list-style-type: none"> <li>Steel or iron sheets are driven into the ground to form a subsurface barrier.</li> <li>Low-cost containment method.</li> <li>Used primarily for shallow aquifers.</li> </ul>	<ul style="list-style-type: none"> <li>Metal cleaning, rinsing and bathing operations, chemical storage, wastewater treatment.</li> </ul>	<ul style="list-style-type: none"> <li>Not contaminant-specific.</li> </ul>	<ul style="list-style-type: none"> <li>Not effective in the absence of a continuous aquitard.</li> <li>Can leak at the intersection of the sheets and the aquitard or through pile wall joints.</li> </ul>	<ul style="list-style-type: none"> <li>\$8 to \$17 per square foot.<sup>2</sup></li> </ul>
Grout Curtain	<ul style="list-style-type: none"> <li>Grout curtains are injected into subsurface soils and bedrock.</li> <li>Forms an impermeable barrier in the subsurface.</li> </ul>	<ul style="list-style-type: none"> <li>Metal cleaning, rinsing and bathing operations, chemical storage, wastewater treatment.</li> </ul>	<ul style="list-style-type: none"> <li>Not contaminant-specific.</li> </ul>	<ul style="list-style-type: none"> <li>Difficult to ensure a complete curtain without gaps through which the plume can escape: <b>however, new</b> techniques have improved continuity of curtain.</li> </ul>	<ul style="list-style-type: none"> <li>\$6 to \$14 per square foot.<sup>2</sup></li> </ul>
Slurry Walls	<ul style="list-style-type: none"> <li>Consist of a vertically excavated slurry-filled trench.</li> <li>The slurry hydraulically shores the trench to prevent collapse and forms a filtercake to reduce groundwater flow.</li> <li>Often used where the waste mass is too large for treatment and where soluble and mobile constituents pose an imminent threat to a source of drinking water.</li> <li>Often constructed of a soil, bentonite, and water mixture.</li> </ul>	<ul style="list-style-type: none"> <li>Metal cleaning, rinsing and bathing operations, chemical storage, wastewater treatment.</li> </ul>	<ul style="list-style-type: none"> <li>Not contaminant-specific.</li> </ul>	<ul style="list-style-type: none"> <li>Contains contaminants only within a specified area.</li> <li>Soil-bentonite backfills are not able to withstand attack by strong acids, bases, salt solutions, and some organic chemicals.</li> <li>Potential for the slurry walls to degrade or deteriorate over time.</li> </ul>	<ul style="list-style-type: none"> <li>Design and installation costs of \$5 to \$7 per square foot (1991 dollars) for a standard soil-bentonite wall in soft to medium soil.<sup>3</sup></li> <li>Above costs do not include variable costs required for chemical analyses, feasibility, or compatibility testing.</li> </ul>
Capping	<ul style="list-style-type: none"> <li>Used to cover buried waste materials to prevent migration.</li> <li>Made of a relatively impermeable material that will minimize rainwater infiltration.</li> <li>Waste materials can be left in place.</li> <li>Requires periodic inspections and routine monitoring.</li> <li>Contaminant migration must be monitored periodically.</li> </ul>	<ul style="list-style-type: none"> <li>Anodizing, solid wastes from anodizing, electroplating, electroplating wastewaters and solid wastes, finishing wastewaters, chemical conversion coating wastewaters and solid wastes, electroless plating, electroless plating wastewaters, solid wastes from painting, wastewater treatment system, sunken treatment tank.</li> </ul>	<ul style="list-style-type: none"> <li>Metals.</li> </ul>	<ul style="list-style-type: none"> <li>Costs associated with routine sampling and analysis may be high.</li> <li>Long-term maintenance may be required to ensure impermeability.</li> <li>May have to be replaced after 20 to 30 years of operation.</li> <li>May not be effective if ground water table is high.</li> </ul>	<ul style="list-style-type: none"> <li>\$11 to \$40 per square yard.<sup>4</sup></li> </ul>

<sup>1</sup> The cleanup of any one area is likely to affect the cleanup of other areas in close proximity; cleanup decisions are often made for larger areas than those presented here, and combinations of technologies may be selected.

<sup>2</sup> Federal Remediation Technology Roundtable. [http://www.frtr.gov/matrix/top\\_page.html](http://www.frtr.gov/matrix/top_page.html)

<sup>3</sup> Costs of Remedial Actions at Uncontrolled Hazardous Wastes Sites, U.S. EPA, 1986.

<sup>4</sup> Interagency Cost Workgroup, 1994.

VOCs = volatile organic compounds

(Continued)

Table 6. Continued

Applicable Technology	Description	Examples of Applicable Land/Process Areas <sup>1</sup>	Contaminants Treated by This Technology	Limitations	cost
<b>Ex Situ Technologies</b>					
Excavation/ Offsite Disposal	<ul style="list-style-type: none"> <li>Removes contaminated material to an EPA-approved landfill.</li> </ul>	<ul style="list-style-type: none"> <li>Wastes from painting, wastewater treatment system, sunken treatment tanks, chemical storage, disposal.</li> </ul>	<ul style="list-style-type: none"> <li>Not contaminant-specific.</li> </ul>	<ul style="list-style-type: none"> <li>Generation of fugitive emissions may be a problem during operations.</li> <li>The distance from the contaminated site to the nearest disposal facility will affect cost.</li> <li>Depth and composition of the media requiring excavation must be considered.</li> <li>Transportation of the soil through populated areas may affect community acceptability.</li> <li>Disposal options for certain waste (e.g., mixed waste or transuranic waste) may be limited. There is currently only one licensed disposal facility for radioactive and mixed waste in the United States.</li> </ul>	<ul style="list-style-type: none"> <li>\$270 to \$460 p e r ton.<sup>3</sup></li> </ul>
Chemical Oxidation/ Reduction	<ul style="list-style-type: none"> <li>Reduction/oxidation (<b>Redox</b>) reactions chemically convert hazardous contaminants to nonhazardous or less toxic compounds that are more stable, less mobile, or inert.</li> <li><b>Redox</b> reactions involve the transfer of electrons from one compound to another.</li> <li>The oxidizing agents commonly used are ozone, hydrogen peroxide, hypochlorite, chlorine, and chlorine dioxide.</li> </ul>	<ul style="list-style-type: none"> <li>Wastes from anodizing, electroplating, finishing, chemical conversion coating, electroless plating, painting, rinsing operations, wastewater treatment system, sunken treatment tank.</li> </ul>	<ul style="list-style-type: none"> <li>Metals.</li> <li>Cyanide.</li> </ul>	<ul style="list-style-type: none"> <li>Not cost-effective for high contaminant concentrations because of the large amounts of oxidizing agent required.</li> <li>Oil and grease in the media should be minimized to optimize process efficiency.</li> </ul>	<ul style="list-style-type: none"> <li>\$190 to \$660 per cubic meter of soil.<sup>3</sup></li> </ul>

(Continued)

Table 6. Continued

Applicable Technology	Description	Examples of Applicable Land/Process Areas <sup>1</sup>	Contaminants Treated by This Technology	Limitations	cost
UV Oxidation	<ul style="list-style-type: none"> <li>• Destruction process that oxidizes constituents in wastewater by the addition of strong oxidizers and irradiation with UV light.</li> <li>• Practically any organic contaminant that is reactive with the hydroxyl radical can potentially be treated.</li> <li>• The oxidation reactions are achieved through the synergistic action of UV light in combination with ozone or hydrogen peroxide.</li> <li>• Can be configured in batch or continuous flow models, depending on the throughput rate under consideration.</li> </ul>	<ul style="list-style-type: none"> <li>• Wastes from metal cleaning, painting, rinsing operations, wastewater treatment system, sunken treatment tank, chemical storage area, disposal area.</li> </ul>	<ul style="list-style-type: none"> <li>• VOCs</li> </ul>	<ul style="list-style-type: none"> <li>• The aqueous stream being treated must provide for good transmission of UV light (high turbidity causes interference).</li> <li>• Metal ions in the wastewater may limit effectiveness.</li> <li>• VOCs may volatilize before oxidation can occur.</li> <li>• Off-gas may require treatment.</li> <li>• Costs may be higher than competing technologies because of energy requirements.</li> <li>• Handling and storage of oxidizers require special safety precautions.</li> </ul>	<ul style="list-style-type: none"> <li>• \$0.10 to \$10 per 1,000 gallons treated.<sup>3</sup></li> </ul>
Precipitation	<ul style="list-style-type: none"> <li>• Involves the conversion of soluble heavy metal salts to insoluble salts that will precipitate.</li> <li>• Precipitate can be removed from the treated water by physical methods such as clarification or filtration.</li> <li>• Often used as a pretreatment for other treatment technologies where the presence of metals would interfere with the treatment processes.</li> <li>• Primary method for treating metal-laden industrial wastewater.</li> </ul>	<ul style="list-style-type: none"> <li>• Wastes from anodizing, electroplating, finishing, chemical conversion coating, electroless plating, painting, rinsing operations, wastewater treatment system, sunken treatment tank.</li> </ul>	<ul style="list-style-type: none"> <li>• Metals.</li> </ul>	<ul style="list-style-type: none"> <li>• Contamination source is not removed.</li> <li>• The presence of multiple metal species may lead to removal difficulties.</li> <li>• Discharge standard may necessitate further treatment of effluent.</li> <li>• Metal hydroxide sludges must pass TCLP criteria prior to land disposal.</li> <li>• Treated water will often require pH adjustment.</li> </ul>	<ul style="list-style-type: none"> <li>• Capital costs are \$85,000 to \$115,000 for 20 to 65 gpm precipitation systems.</li> <li>• Primary capital cost factor is design flow rate.</li> <li>• Operating costs are \$0.30 to \$0.70 per 1,000 gallons treated.</li> <li>• Sludge disposal may be estimated to increase operating costs by \$0.50 per 1,000 gallons treated.<sup>3</sup></li> </ul>
Liquid Phase Carbon Adsorption	<ul style="list-style-type: none"> <li>• Groundwater is pumped through a series of vessels containing activated carbon, to which dissolved contaminants adsorb.</li> <li>• Effective for polishing water discharges from other remedial technologies to attain regulatory compliance.</li> <li>• Can be quickly installed.</li> <li>• High contaminant-removal efficiencies.</li> </ul>	<ul style="list-style-type: none"> <li>• Wastes from metal cleaning, painting, rinsing operations, wastewater treatment system, sunken treatment tank, chemical storage area, disposal area.</li> </ul>	<ul style="list-style-type: none"> <li>• VOCs.</li> </ul>	<ul style="list-style-type: none"> <li>• The presence of multiple contaminants can affect process performance.</li> <li>• Metals can foul the system.</li> <li>• Costs are high if used as the primary treatment on waste streams with high contaminant concentration levels.</li> <li>• Type and pore size of the carbon and operating temperature will impact process performance.</li> <li>• Transport and disposal of spent carbon can be expensive.</li> <li>• Water soluble compounds and small molecules are not adsorbed well.</li> </ul>	<ul style="list-style-type: none"> <li>• \$1.20 to \$6.30 per 1,000 gallons treated at flow rates of 0.1 mgd.</li> <li>• Costs decrease with increasing flow rates and decreasing concentrations.</li> <li>• Costs are dependent on waste stream flow rates, type of contaminant, concentration, and timing requirements.<sup>3</sup></li> </ul>

(Continued)

Table 6. Continued

Applicable Technology	Description	Examples of Applicable Land/Process Areas <sup>1</sup>	Contaminants Treated by This Technology	Limitations	cost
Air Stripping	<ul style="list-style-type: none"> <li>Contaminants are <b>partitioned</b> from groundwater by greatly increasing the surface area of the contaminated water exposed to air.</li> <li>Aeration methods include packed <b>towers</b>, diffused aeration, tray aeration, and spray aeration.</li> <li>Can be operated continuously or in a batch mode, where the air stripper is intermittently fed from a collection tank.</li> <li>The batch mode ensures consistent air stripper performance and greater efficiency than continuously operated units because mixing in the storage tank eliminates any inconsistencies in feed water composition.</li> </ul>	<ul style="list-style-type: none"> <li>Wastes from metal cleaning, painting, rinsing operations, wastewater treatment system, sunken treatment tank, chemical storage area, disposal area.</li> </ul>	<ul style="list-style-type: none"> <li>VOCs.</li> </ul>	<ul style="list-style-type: none"> <li>Potential for inorganic (iron greater than 5 ppm, hardness greater than 800 ppm) or biological fouling of the equipment, requiring pretreatment of groundwater or periodic column cleaning.</li> <li>Consideration should be given to the Henry's law constant of the <b>VOCs</b> in the water stream and the type and amount of packing used in the tower.</li> <li>Compounds with low volatility at ambient temperature may require preheating of the groundwater.</li> <li>Off-gases may require treatment based on mass emission rate and state and federal air pollution laws.</li> </ul>	<ul style="list-style-type: none"> <li>\$0.04 to \$0.20 per 1,000 gallons.</li> <li>A major operating <b>cost</b> of air strippers is the electricity required for the groundwater pump, the sump discharge pump, and the air blower.</li> </ul>
<b>In Situ Technologies</b>					
Natural Attenuation	<ul style="list-style-type: none"> <li>Natural subsurface processes such as dilution, volatilization, biodegradation, adsorption, and chemical reactions with subsurface media can reduce contaminant concentrations to acceptable levels.</li> <li>Consideration of this option requires modeling and evaluation of contaminant degradation rates and pathways.</li> <li>Sampling and analyses must be conducted throughout the process to confirm that degradation is proceeding at sufficient rates to meet cleanup objectives.</li> </ul>	<ul style="list-style-type: none"> <li>Metal cleaning, metal cleaning, wastewaters, painting, painting wastewaters and solid wastes, wastewater treatment system, sunken treatment tank, chemical storage area, disposal area.</li> </ul>	<ul style="list-style-type: none"> <li>VOCs.</li> </ul>	<ul style="list-style-type: none"> <li>Intermediate degradation products may be more mobile and more toxic than original contaminants.</li> <li>Contaminants may migrate before they degrade.</li> <li>The site may have to be fenced and may not be available for reuse until hazard levels are reduced.</li> <li>Source areas may require removal for natural attenuation to be effective.</li> <li>Modeling contaminant degradation rates, and sampling and analysis to confirm modeled predictions extremely expensive.</li> </ul>	<ul style="list-style-type: none"> <li>Not available.</li> </ul>

(Continued)

Table 6. Continued

Applicable Technology	Description	Examples of Applicable Land/Process Areas <sup>1</sup>	Contaminants Treated by This Technology	Limitations	Cost
Soil Vapor Extraction	<ul style="list-style-type: none"> <li>• A vacuum is applied to the soil to induce controlled air flow and remove contaminants from the unsaturated (vadose) zone of the soil.</li> <li>• The gas leaving the soil may be treated to recover or destroy the contaminants.</li> <li>• The continuous air flow promotes <i>in situ</i> biodegradation of low-volatility organic compounds that may be present.</li> </ul>	<ul style="list-style-type: none"> <li>• Metal cleaning, metal cleaning wastewaters, painting, painting wastewaters and solid wastes, wastewater treatment system, sunken treatment tank, chemical storage area, disposal area.</li> </ul>	<ul style="list-style-type: none"> <li>• VOCs.</li> </ul>	<ul style="list-style-type: none"> <li>• Tight or extremely moist content (&gt;50%) has a reduced permeability to air, requiring higher vacuums.</li> <li>• Large screened intervals are required in extraction wells for soil with highly variable permeabilities.</li> <li>• Air emissions may require treatment to eliminate possible harm to the public or environment.</li> <li>• Off-gas treatment residual liquids and spent activated carbon may require treatment or disposal.</li> <li>• Not effective in the saturated zone.</li> </ul>	<ul style="list-style-type: none"> <li>• \$10 to \$60 per cubic meter of soil.<sup>3</sup></li> <li>• Cost is site specific depending on the size of the site, the nature and amount of contamination, and the hydro-geological setting, which affect the number of wells, the blower capacity and vacuum level required, and length of time required to remediate the site.</li> <li>• Off-gas treatment significantly adds to the cost.</li> </ul>
Soil Flushing	<ul style="list-style-type: none"> <li>• Extraction of contaminants from the soil with water or other aqueous solutions.</li> <li>• Accomplished by passing the extraction fluid through in-place soils using injection or Infiltration processes.</li> <li>• Extraction fluids must be recovered with extraction wells from the underlying aquifer and recycled when possible.</li> </ul>	<ul style="list-style-type: none"> <li>• Anodizing, solid wastes from anodizing, electroplating, electroplating wastewaters and solid wastes, finishing waste-waters, chemical conversion coating wastewaters and solid wastes, electroless plating, electroless plating wastewaters, solid wastes from painting, wastewater treatment system, sunken treatment tank.</li> </ul>	<ul style="list-style-type: none"> <li>• Metals.</li> </ul>	<ul style="list-style-type: none"> <li>• Low-permeability soils are difficult to treat.</li> <li>• Surfactants can adhere to soil and reduce effective soil porosity.</li> <li>• Reactions of flushing fluids with soil can reduce contaminant mobility.</li> <li>• Potential of washing the contaminant beyond the capture zone and the introduction of surfactants to the subsurface.</li> </ul>	<ul style="list-style-type: none"> <li>• The major factor affecting cost is the separation of surfactants from recovered flushing fluid.<sup>3</sup></li> </ul>

(Continued)

Table 6. Continued

Applicable Technology	Description	Examples of Applicable Land/Process Areas <sup>1</sup>	Contaminants Treated by This Technology	Limitations	cost
Air Sparging	<ul style="list-style-type: none"> <li>• <i>In situ</i> technology in which air is injected under pressure below the water table to increase groundwater oxygen concentrations and enhance the rate of biological degradation of contaminants by naturally occurring microbes.</li> <li>• Increases the mixing in the saturated zone, which increases the contact between groundwater and soil.</li> <li>• Air bubbles traverse horizontally and vertically through the soil column, creating an underground stripper that volatilizes contaminants.</li> <li>• Air bubbles travel to a soil vapor extraction system.</li> <li>• Air sparging is effective for facilitating extraction of deep contamination, contamination in low-permeability soils, and contamination in the saturated zone.</li> </ul>	<ul style="list-style-type: none"> <li>• Metal cleaning, metal cleaning wastewaters, painting, painting wastewaters and solid wastes, wastewater treatment system, sunken treatment tank, chemical storage area, disposal area.</li> </ul>	<ul style="list-style-type: none"> <li>• VOCs.</li> </ul>	<ul style="list-style-type: none"> <li>• Depth of contaminants and specific site geology must be considered.</li> <li>• Air flow through the saturated zone may not be uniform.</li> <li>• A permeability differential such as a clay layer above the air injection zone can reduce the effectiveness.</li> <li>• Vapors may rise through the vadose zone and be released into the atmosphere.</li> <li>• Increased pressure in the vadose zone can build up vapors in basements, which are generally low-pressure areas.</li> </ul>	<ul style="list-style-type: none"> <li>• \$50 to \$100 per 1,000 gallons of groundwater treated.<sup>3</sup></li> </ul>
Passive Treatment Walls	<ul style="list-style-type: none"> <li>• A permeable reaction wall is installed inground, across the flow path of a contaminant plume, allowing the water portion of the plume to passively move through the wall.</li> <li>• Allows the passage of water while prohibiting the movement of contaminants by employing such agents as iron, chelators (ligands selected for their specificity for a given metal), sorbents, microbes, and others.</li> <li>• Contaminants are typically completely degraded by the treatment wall.</li> </ul>	<ul style="list-style-type: none"> <li>• <b>Appropriately</b> selected location for wall.</li> </ul>	<ul style="list-style-type: none"> <li>• VOCs.</li> <li>• Metals.</li> </ul>	<ul style="list-style-type: none"> <li>• The system requires control of pH levels. When pH levels within the <b>passive</b> treatment wall rise, it reduces the reaction rate and can inhibit the effectiveness of the wall.</li> <li>• Depth and width of the plume. For large-scale plumes, installation cost may be high.</li> <li>• Cost of treatment medium (iron).</li> <li>• Biological activity may reduce the permeability of the wall.</li> <li>• Walls may lose their reactive capacity, requiring replacement of the reactive medium.</li> </ul>	<ul style="list-style-type: none"> <li>• Capital costs for these projects range from \$250,000 to <b>\$1,000,000.<sup>3</sup></b></li> <li>• Operations and maintenance costs approximately 5 to 10 times less than capital costs.</li> </ul>

(Continued)



Table 6. Continued

Applicable Technology	Description	Examples of Applicable Land/Process Areas <sup>1</sup>	Contaminants Treated by This Technology	Limitations	cost
Biodegradation	<ul style="list-style-type: none"> <li>• Indigenous or introduced microorganisms degrade organic contaminants found in soil and groundwater.</li> <li>• Used successfully to remediate soils, sludges, and groundwater.</li> <li>• Especially effective for remediating low-level residual contamination in conjunction with source removal.</li> </ul>	<ul style="list-style-type: none"> <li>• Metal cleaning, metal cleaning wastewaters, painting, painting wastewaters and solid wastes, wastewater treatment system, sunken treatment tank, chemical storage area, disposal area.</li> </ul>	<ul style="list-style-type: none"> <li>• VOCs.</li> </ul>	<ul style="list-style-type: none"> <li>• Cleanup goals may not be attained if the soil matrix prevents sufficient mixing.</li> <li>• Circulation of water-based solutions through the soil may increase contaminant mobility and necessitate treatment of underlying groundwater.</li> <li>• Injection wells may clog and prevent adequate flow rates.</li> <li>• Preferential flow paths may result in nonuniform distribution of injected fluids.</li> <li>• Should not be used for clay, highly layered, or heterogeneous subsurface environments.</li> <li>• High concentrations of heavy metals, highly chlorinated organics, long chain hydrocarbons, or inorganic salts are likely to be toxic to microorganisms.</li> <li>• Low temperatures slow bioremediation.</li> <li>• Chlorinated solvents may not degrade fully under certain subsurface conditions.</li> </ul>	<ul style="list-style-type: none"> <li>• \$30 to \$100 per cubic meter of soil.<sup>3</sup></li> <li>• Cost affected by the nature and depth of the contaminants, use of bioaugmentation or hydrogen peroxide addition, and groundwater pumping rates.</li> </ul>

<sup>1</sup> The cleanup of any one area is likely to affect the cleanup of other areas in close proximity; cleanup decisions are often made for larger areas than those presented here, and combinations of technologies may be selected.

<sup>2</sup> Federal Remediation Technology Roundtable. [http://www.frtr.gov/matrix/top\\_page.html](http://www.frtr.gov/matrix/top_page.html)

<sup>3</sup> Costs of Remedial Actions at Uncontrolled Hazardous Wastes Sites, U.S. EPA, 1986.

<sup>4</sup> Interagency Cost Workgroup, 1994.

VOCs = volatile organic compounds

---

## Chapter 5

### Conclusion

Brownfields redevelopment contributes to the revitalization of communities across the U.S. Reuse of these abandoned, contaminated sites spurs economic growth, builds community pride, protects public health, and helps maintain our nation's "greenfields," often at a relatively low cost. This document provides brownfields planners with an overview of the technical methods that can be used to achieve successful site assessment and cleanup, which are two key components in the brownfields redevelopment process.

While the general guidance provided in this document will be applicable to many brownfields projects, it is important to recognize the heterogeneous nature of brownfields work. That is, no two brownfields sites will be identical, and planners will need to base site assessment and cleanup activities on the conditions at their particular site. Some of the conditions that may vary by site include the type of contaminants present, the geographic location and extent of contamination, the availability of site records, hydrogeological conditions, and state and local regulatory requirements. Based on these factors, as well as financial resources and desired timeframes, planners will find different assessment and cleanup approaches appropriate.

Consultation with state and local environmental officials and community leaders, as well as careful planning early in the project, will assist planners in developing the most appropriate site assessment and cleanup approaches. Planners should also determine early on if they are likely to require the assistance of environmental engineers. A site assessment strategy should be agreeable to all stakeholders and should address:

- The type and extent of contamination, if any, present at the site
- The types of data needed to adequately assess the site
- Appropriate sampling and analytical methods for characterizing contamination
- An acceptable level of data uncertainty

When used appropriately, the site assessment methods described in this document will help to ensure that a good strategy is developed and implemented effectively.

Once the site has been assessed and stakeholders agree that cleanup is needed, planners will need to consider cleanup options. Many different types of cleanup technologies are available. The guidance provided in this document on selecting appropriate methods directs planners to base cleanup initiatives on site- and project-specific conditions. The type and extent of cleanup will depend in large part on the type and level of contamination present, reuse goals, and the budget available. Certain cleanup technologies are used **onsite**, while others require **offsite** treatment. Also, in certain circumstances, containment of contamination **onsite** and the use of institutional controls may be important components of the cleanup effort. Finally, planners will need to include budgetary provisions and plans for post-cleanup and post-construction care if it is required at the brownfields site. By developing a technically sound site assessment and cleanup approach that is based on site-specific conditions and addresses the concerns of all project stakeholders, planners can achieve brownfields redevelopment and reuse goals effectively and safely.

## Appendix A

### Acronyms and Abbreviations

ASTM	American Society for Testing and Materials
ATSDR	Agency for Toxic Substances and Disease Registry
B T E X	Benzene, Toluene, Ethylbenzene, and Xylene
CERCLIS	Comprehensive Environmental Response, Compensation, and Liability Information System
DQO	Data Quality Objective
EPA	U.S. Environmental Protection Agency
ERNS	Emergency Response Notification System
FID	Flame Ionization Detector
FOIA	Freedom of Information Act
NPDES	National Pollutant Discharge Elimination System
NPL	National Priorities List
O&M	Operations and Maintenance
ORD	Office of Research and Development
OSWER	Office of Solid Waste and Emergency Response
PAH	Polycyclic Aromatic Hydrocarbon
PCB	Polychlorinated Biphenyl
PID	Photoionization Detector
PCP	Pentachlorophenol
PLM	Polarized Light Microscopy
POTW	Publicly Owned Treatment Works
ppb	parts per billion
ppm	parts per million
RCRA	Resource Conservation and Recovery Act
SVE	Soil Vapor Extraction
s v o c	Semi-Volatile Organic Compound
TCE	Trichloroethylene
TIO	Technology Innovation Office
TPH	Total Petroleum Hydrocarbon
TSD	Treatment, Storage, and Disposal
USDA	U.S. Department of Agriculture
USGS	U.S. Geological Survey
UST	Underground Storage Tank
VCP	Voluntary Cleanup Program
v o c	Volatile Organic Compound
XRF	X-ray Fluorescence

---

## Appendix B

### Glossary of Key Terms

The following is a list of specialized terms used during the assessment and cleanup of brownfields sites.

**Air Sparging** - In air sparging, air is injected into the ground below a contaminated area, forming bubbles that rise and carry trapped and dissolved contaminants to the surface where they are captured by a soil vapor extraction system. Air sparging may be a good choice of treatment technology at sites contaminated with solvents and other volatile organic compounds (VOCs). See also Soil Vapor Extraction and Volatile Organic Compound.

**Air Stripping** - Air stripping is a treatment method that removes or “strips” VOCs from contaminated groundwater or surface water as air is forced through the water, causing the compounds to evaporate. See also Volatile Organic Compound.

**American Society for Testing and Materials (ASTM)** - The ASTM sets standards for many services, including methods of sampling and testing of hazardous waste, and media contaminated with hazardous waste.

**Aquifer** - An aquifer is an underground rock formation composed of such materials as sand, soil, or gravel that can store groundwater and supply it to wells and springs.

**Aromatics** - Aromatics are organic compounds that contain 6-carbon ring structures, such as creosote, toluene, and phenol, that often are found at dry cleaning and electronic assembly sites.

**Baseline Risk Assessment** - A baseline risk assessment is an assessment conducted before cleanup activities begin at a site to identify and evaluate the threat to human health and the environment. After cleanup has been completed, the information obtained during a baseline risk assessment can be used to determine whether the cleanup levels were reached.

**Bedrock** - Bedrock is the rock that underlies the soil; it can be permeable or non-permeable. See also Confining Layer and Creosote.

**Bioremediation** - Bioremediation refers to treatment processes that use microorganisms (usually naturally occurring) such as bacteria, yeast, or fungi to break down hazardous substances into less toxic or nontoxic substances. Bioremediation can be used to clean up contaminated soil and water. *In situ* bioremediation treats the contaminated soil or groundwater in the location in which it is found. For *ex situ* bioremediation processes, contaminated soil must be excavated or groundwater pumped before they can be treated.

**Bioventing** - Bioventing is an *in situ* cleanup technology that combines soil vapor extraction methods with bioremediation. It uses vapor extraction wells that induce air flow in the subsurface through air injection or through the use of a vacuum. Bioventing can be effective in cleaning up releases of petroleum products, such as gasoline, jet fuels, kerosene, and diesel fuel. See also Bioremediation and Soil Vapor Extraction.

**Borehole** - A borehole is a hole cut into the ground by means of a drilling rig.

**Borehole Geophysics** - Borehole geophysics are nuclear or electric technologies used to identify the physical characteristics of geologic formations that are intersected by a borehole.

**Brownfields** - Brownfields sites are abandoned, idled, or under-used industrial and commercial facilities where expansion or redevelopment is complicated by real or perceived environmental contamination.

**BTEX** - BTEX is the term used for benzene, toluene, ethylbenzene, and xylene-volatile aromatic compounds typically found in petroleum products, such as gasoline and diesel fuel.

**Cadmium** - Cadmium is a heavy metal that accumulates in the environment. See also Heavy Metal.,

**Carbon Adsorption** - Carbon adsorption is a treatment method that removes contaminants from groundwater or surface water as the water is forced through tanks containing activated carbon.

**Chemical Dehalogenation** - Chemical dehalogenation is a chemical process that removes halogens (usually chlorine) from a chemical contaminant, rendering the contaminant less hazardous. The chemical dehalogenation process can be applied to common halogenated contaminants such as polychlorinated biphenyls (PCBs), dioxins (DDT), and certain chlorinated pesticides, which may be present in soil and oils. The treatment time is short, energy requirements are moderate, and operation and maintenance costs are relatively low. This technology can be brought to the site, eliminating the need to transport hazardous wastes. See also Polychlorinated Biphenyl.

**Cleanup** - Cleanup is the term used for actions taken to deal with a release or threat of release of a hazardous substance that could affect humans and/or the environment.

**Colorimetric** - Colorimetric refers to chemical reaction-based indicators that are used to produce compound reactions to individual compounds, or classes of compounds. The reactions, such as visible color changes or other easily noted indications, are used to detect and quantify contaminants.

**Comprehensive Environmental Response, Compensation, and Liability Information System (CERCLIS)** - CERCLIS is a database that serves as the official inventory of Superfund hazardous waste sites. CERCLIS also contains information about all aspects of hazardous waste sites, from initial discovery to deletion from the National Priorities List (NPL). The database also maintains information about planned and actual site activities and financial information entered by EPA regional offices. CERCLIS records the targets and accomplishments of the Superfund program and is used to report that information to the EPA Administrator, Congress, and the public. See also National Priorities List and Superfund.

**Confining Layer** - A “confining layer” is a geological formation characterized by low permeability that inhibits the flow of water. See also Bedrock and Permeability.

**Contaminant** - A contaminant is any physical, chemical, biological, or radiological substance or matter present in any media at concentrations that may result in adverse effects on air, water, or soil.

**Data Quality Objective (DQO)** - DQOs are qualitative and quantitative statements specified to ensure that data of known and appropriate quality are obtained. The DQO process is a series of planning steps, typically conducted during site assessment and investigation, that is designed to ensure that the type, quantity, and quality of environmental data used in decision making are appropriate. The DQO process involves a logical, step-by-step procedure for determining which of the complex issues affecting a site are the most relevant to planning a site investigation before any data are collected.

**Disposal** - Disposal is the final placement or destruction of toxic, radioactive or other wastes; surplus or banned pesticides or other chemicals; polluted soils; and drums containing hazardous materials from removal actions or accidental release. Disposal may be accomplished through the use of approved secure landfills, surface impoundments, land farming, deep well injection, ocean dumping, or incineration.

**Dual-Phase Extraction** - Dual-phase extraction is a technology that extracts contaminants simultaneously from soils in saturated and unsaturated zones by applying soil vapor extraction techniques to contaminants trapped in saturated zone soils. See also Soil Vapor Extraction.

**Electromagnetic (EM) Geophysics** - EM geophysics refers to technologies used to detect spatial (lateral and vertical) differences in subsurface electromagnetic characteristics. The data collected provide information about subsurface environments.

**Electromagnetic (EM) Induction** - EM induction is a geophysical technology used to induce a magnetic field beneath the earth's surface, which in turn causes a secondary magnetic field to form around nearby objects that have conductive properties, such as ferrous and nonferrous metals. The secondary magnetic field is then used to detect and measure buried debris.

**Emergency Removal** - An emergency removal is an action initiated in response to a release of a hazardous substance that requires onsite activity within hours of a determination that action is appropriate.

---

**Emerging Technology** - An emerging technology is an innovative technology that currently is undergoing bench-scale testing. During bench-scale testing, a small version of the technology is built and tested in a laboratory. If the technology is successful during bench-scale testing, it is demonstrated on a small scale at field sites. If the technology is successful at the field demonstrations, it often will be used full scale at contaminated waste sites. The technology is continually improved as it is used and evaluated at different sites. See also Established Technology and Innovative Technology.

**Engineered Control** -An engineered control, such as barriers placed between contamination and the rest of a site, is a method of managing environmental and health risks. Engineered controls can be used to limit exposure pathways.

**Established Technology** -An established technology is a technology for which cost and performance information is readily available. Only after a technology has been used at many different sites and the results fully documented is that technology considered established. The most frequently used established technologies are incineration, solidification and stabilization, and pump-and-treat technologies for groundwater. See also Emerging Technology and Innovative Technology.

**Exposure Pathway** - An exposure pathway is the route of contaminants from the source of contamination to potential contact with a medium (air, soil, surface water, or groundwater) that represents a potential threat to human health or the environment. Determining whether exposure pathways exist is an essential step in conducting a baseline risk assessment. See also Baseline Risk Assessment.

**Ex Situ** - The term *ex situ* or “moved from its original place,” means excavated or removed.

**Filtration** -Filtration is a treatment process that removes solid matter from water by passing the water through a porous medium, such as sand or a manufactured filter.

**Flame Ionization Detector (FID)** - An FID is an instrument often used in conjunction with gas chromatography to measure the change of signal as analytes are ionized by a hydrogen-air flame. It also is used to detect phenols, phthalates, polyaromatic hydrocarbons (PAH), VOCs, and petroleum hydrocarbons. See also Volatile Organic Compounds.

**Fourier Transform. Infrared Spectroscopy** - A fourier transform infrared spectroscope is an analytical air monitoring tool that uses a laser system chemically to identify contaminants.

**Fumigant** - A fumigant is a pesticide that is vaporized to kill pests. They often are used in buildings and greenhouses.

**Furan** - Furan is a colorless, volatile liquid compound used in the synthesis of organic compounds, especially nylon.

**Gas Chromatography** - Gas chromatography is a technology used for investigating and assessing soil, water, and soil gas contamination at a site. It is used for the analysis of VOCs and semi-volatile organic compounds (SVOCs). The technique identifies and quantifies organic compounds on the basis of molecular weight, characteristic fragmentation patterns, and retention time. Recent advances in gas chromatography considered innovative are portable, weatherproof units that have self-contained power supplies.

**Ground-Penetrating Radar (GPR)** - GPR is a technology that emits pulses of electromagnetic energy into the ground to measure its reflection and refraction by subsurface layers and other features, such as buried debris.

**Groundwater** - Groundwater is the water found beneath the earth's surface that fills pores between such materials as sand, soil, or gravel and that often supplies wells and springs. See also Aquifer.

**Hazardous Substance** - A hazardous substance is any material that poses a threat to public health or the environment. Typical hazardous substances are materials that are toxic, corrosive, ignitable, explosive, or chemically reactive. If a certain quantity of a hazardous substance, as established by EPA, is spilled into the water or otherwise emitted into the environment, the release must be reported. Under certain federal legislation, the term excludes petroleum, crude oil, natural gas, natural gas liquids, or synthetic gas usable for fuel.

**Heavy Metal** - The term heavy metal refers to a group of toxic metals including arsenic, chromium, copper, lead, mercury, silver, and zinc. Heavy metals often are present at industrial sites at which operations have included battery recycling and metal plating.

**High-Frequency Electromagnetic (EM) Sounding** - High-frequency EM sounding, the technology used for

non-intrusive geophysical exploration, projects high-frequency electromagnetic radiation into subsurface layers to detect the reflection and refraction of the radiation by various layers of soil. Unlike ground-penetrating radar, which uses pulses, the technology uses continuous waves of radiation. See also Ground-Penetrating Radar.

**Hydrocarbon** - A hydrocarbon is an organic compound containing only hydrogen and carbon, often occurring in petroleum, natural gas, and coal.

**Hydrogeology** - Hydrogeology is the study of groundwater, including its origin, occurrence, movement, and quality.

**Hydrology** - Hydrology is the science that deals with the properties, movement, and effects of water found on the earth's surface, in the soil and rocks beneath the surface, and in the atmosphere.

**Ignitability** - Ignitable wastes can create fires under certain conditions. Examples include liquids, such as solvents that readily catch fire, and friction-sensitive substances.

**Immunoassay** - Immunoassay is an innovative technology used to measure compound-specific reactions (generally colorimetric) to individual compounds or classes of compounds. The reactions are used to detect and quantify contaminants. The technology is available in field-portable test kits.

**Incineration** - Incineration is a treatment technology that involves the burning of certain types of solid, liquid, or gaseous materials under controlled conditions to destroy hazardous waste.

**Infrared Monitor** -An infrared monitor is a device used to monitor the heat signature of an object, as well as to sample air. It may be used to detect buried objects in soil.

**Inorganic Compound** -An inorganic compound is a compound that generally does not contain carbon atoms (although carbonate and bicarbonate compounds are notable exceptions), tends to be soluble in water, and tends to react on an ionic rather than on a molecular basis. Examples of inorganic compounds include various acids, potassium hydroxide, and metals.

**Innovative Technology** - An innovative technology is a process that has been tested and used as a treatment for hazardous waste or other contaminated materials, but lacks a long history of full-scale use and information about

its cost and how well it works sufficient to support prediction of its performance under a variety of operating conditions. An innovative technology is one that is undergoing pilot-scale treatability studies that are usually conducted in the field or the laboratory; require installation of the technology; and provide performance, cost, and design objectives for the technology. Innovative technologies are being used under many Federal and state cleanup programs to treat hazardous wastes that have been improperly released. For example, innovative technologies are being selected to manage contamination (primarily petroleum) at some leaking underground storage sites. See also Emerging Technology and Established Technology\*

**In Situ** - The term *in situ*, "in its original place," or "on-site," means unexcavated and unmoved. *In situ* soil flushing and natural attenuation are examples of ***in situ*** treatment methods by which contaminated sites are treated without digging up or removing the contaminants.

**In Situ Oxidation** - *In situ* oxidation is an innovative treatment technology that oxidizes contaminants that are dissolved in groundwater and converts them into insoluble compounds.

**In Situ Soil Flushing** - *In situ* soil flushing is an innovative treatment technology that floods contaminated soils beneath the ground surface with a solution that moves the contaminants to an area from which they can be removed. The technology requires the drilling of injection and extraction wells onsite and reduces the need for excavation, handling, or transportation of hazardous substances. Contaminants considered for treatment by *in situ* soil flushing include heavy metals (such as lead, copper, and zinc), aromatics, and PCBs. See also Aromatics, Heavy Metal, and Polychlorinated Biphenyl.

**In Situ Vitrification** - *In situ* vitrification is a soil treatment technology that stabilizes metal and other inorganic contaminants in place at temperatures of approximately 3000 F. Soils and sludges are fused to form a stable glass and crystalline structure with very low leaching characteristics.

**Institutional Controls** -An institutional control is a legal or institutional measure which subjects a property owner to limit activities at or access to a particular property. They are used to ensure protection of human health and the environment, and to expedite property reuse. Fences,

---

posting or warning signs, and zoning and deed restrictions are examples of institutional controls.

**Integrated Risk Information System (IRIS)** - IRIS is an electronic database that contains EPA's latest descriptive and quantitative regulatory information about chemical constituents. Files on chemicals maintained in IRIS contain information related to both noncarcinogenic and carcinogenic health effects.

**Landfarming** - Landfarming is the spreading and incorporation of wastes into the soil to initiate biological treatment.

**Landfill** - A sanitary landfill is a land disposal site for nonhazardous solid wastes at which the waste is spread in layers compacted to the smallest practical volume.

**Laser-Induced Fluorescence/Cone Penetrometer** - Laser-induced fluorescence/cone penetrometer is a field screening method that couples a fiber optic-based chemical sensor system to a cone penetrometer mounted on a truck. The technology can be used for investigating and assessing soil and water contamination.

**Lead** - Lead is a heavy metal that is hazardous to health if breathed or swallowed. Its use in gasoline, paints, and plumbing compounds has been sharply restricted or eliminated by Federal laws and regulations. See also Heavy Metal.

**Leaking Underground Storage Tank (LUST)** - LUST is the acronym for "leaking underground storage tank."

**Magnetometry** - Magnetometry is a geophysical technology used to detect disruptions that metal objects cause in the earth's localized magnetic field.

**Mass Spectrometry** - Mass spectrometry is an analytical process by which molecules are broken into fragments to determine the concentrations and mass/charge ratio of the fragments. Innovative mass spectroscopy units, developed through modification of large laboratory instruments, are sometimes portable, weatherproof units with self-contained power supplies.

**Medium** - A medium is a specific environment -- air, water, or soil -- which is the subject of regulatory concern and activities.

**Mercury** - Mercury is a heavy metal that can accumulate in the environment and is highly toxic if breathed or swallowed. Mercury is found in thermometers, measuring devices, pharmaceutical and agricultural chemicals, chemical manufacturing, and electrical equipment. See also Heavy Metal.

**Mercury Vapor Analyzer** - A mercury vapor analyzer is an instrument that provides real-time measurements of concentrations of mercury in the air.

**Methane** - Methane is a colorless, nonpoisonous, flammable gas created by anaerobic decomposition of organic compounds.

**Migration Pathway** - A migration pathway is a potential path or route of contaminants from the source of contamination to contact with human populations or the environment. Migration pathways include air, surface water, groundwater, and land surface. The existence and identification of all potential migration pathways must be considered during assessment and characterization of a waste site.

**Mixed Waste** - Mixed waste is low-level radioactive waste contaminated with hazardous waste that is regulated under the Resource Conservation and Recovery Act (RCRA). Mixed waste can be disposed only in compliance with the requirements under RCRA that govern disposal of hazardous waste and with the RCRA land disposal restrictions, which require that waste be treated before it is disposed of in appropriate landfills.

**Monitoring Well** - A monitoring well is a well drilled at a specific location on or off a hazardous waste site at which groundwater can be sampled at selected depths and studied to determine the direction of groundwater flow and the types and quantities of contaminants present in the groundwater.

**National Pollutant Discharge Elimination System (NPDES)** - NPDES is the primary permitting program under the Clean Water Act, which regulates all discharges to surface water. It prohibits discharge of pollutants into waters of the United States unless EPA, a state, or a tribal government issues a special permit to do so.

**National Priorities List (NPL)** - The NPL is EPA's list of the most serious uncontrolled or abandoned hazardous waste sites identified for possible long-term cleanup under Superfund. Inclusion of a site on the list is based primarily on the score the site receives under the Hazard



Ranking System (HRS). Money from Superfund can be used for cleanup only at sites that are on the NPL. EPA is required to update the NPL at least once a year.

**Natural Attenuation** - Natural attenuation is an approach to cleanup that uses natural processes to contain the spread of contamination from chemical spills and reduce the concentrations and amounts of pollutants in contaminated soil and groundwater. Natural subsurface processes, such as dilution, volatilization, biodegradation, adsorption, and chemical reactions with subsurface materials, reduce concentrations of contaminants to acceptable levels. An *in situ* treatment method that leaves the contaminants in place while those processes occur, natural attenuation is being used to clean up petroleum contamination from leaking underground storage tanks (LUST) across the country.

**Non-Point Source** - The term non-point source is used to identify sources of pollution that are diffuse and do not have a point of origin or that are not introduced into a receiving stream from a specific outlet. Common non-point sources are rain water, runoff from agricultural lands, industrial sites, parking lots, and timber operations, as well as escaping gases from pipes and fittings.

**Operation and Maintenance (O&M)** - O&M refers to the activities conducted at a site, following remedial actions, to ensure that the cleanup methods are working properly. O&M activities are conducted to maintain the effectiveness of the cleanup and to ensure that no new threat to human health or the environment arises. O&M may include such activities as groundwater and air monitoring, inspection and maintenance of the treatment equipment remaining onsite, and maintenance of any security measures or institutional controls.

**Organic Chemical or Compound** -An organic chemical or compound is a substance produced by animals or plants that contains mainly carbon, hydrogen, and oxygen.

**Permeability** - Permeability is a characteristic that represents a qualitative description of the relative ease with which rock, soil, or sediment will transmit a fluid (liquid or gas).

**Pesticide** - A pesticide is a substance or mixture of substances intended to prevent or mitigate infestation by, or destroy or repel, any pest. Pesticides can accumulate in

the food chain and/or contaminate the environment if misused.

**Phase I Site Assessment** -A Phase I site assessment is an initial environmental investigation that is limited to a historical records search to determine ownership of a site and to identify the kinds of chemical processes that were carried out at the site. A Phase I assessment includes a site visit, but does not include any sampling. If such an assessment identifies no significant concerns, a Phase II assessment is not necessary.

**Phase II Site Assessment** - A Phase II site assessment is an investigation that includes tests performed at the site to confirm the location and to identify environmental hazards. The assessment includes preparation of a report that includes recommendations for cleanup alternatives.

**Phenols** - A phenol is one of a group of organic compounds that are byproducts of petroleum refining, tanning, and textile, dye, and resin manufacturing. Low concentrations of phenols cause taste and odor problems in water; higher concentrations may be harmful to human health or the environment.

**Photoionization Detector (PID)** -A PID is a nondestructive detector, often used in conjunction with gas chromatography, that measures the change of signal as analytes are ionized by an ultraviolet lamp. The PID is also used to detect VOCs and petroleum hydrocarbons.

**Phytoremediation** - Phytoremediation is an innovative treatment technology that uses plants and trees to clean up contaminated soil and water. Plants can break down, or degrade, organic pollutants or stabilize metal contaminants by acting as filters or traps. Phytoremediation can be used to clean up metals, pesticides, solvents, explosives, crude oil, PAHs, and landfill leachates. Its use generally is limited to sites at which concentrations of contaminants are relatively low and contamination is found in shallow soils, streams, and groundwater.

**Plasma High-Temperature Metals Recovery** - Plasma high-temperature metals recovery is a thermal treatment process that purges contaminants from solids and soils such as metal fumes and organic vapors. The vapors can be burned as fuel, and the metal fumes can be recovered and recycled. This innovative treatment technology is used to treat contaminated soil and groundwater.

**Plume** - A plume is a visible or measurable emission or discharge of a contaminant from a given point of origin into any medium. The term also is used to refer to mea-

---

surable and potentially harmful radiation leaking from a damaged reactor.

**Point Source** - A point source is a stationary location or fixed facility from which pollutants are discharged or emitted; or any single, identifiable discharge point of pollution, such as a pipe, ditch, or smokestack.

**Polychlorinated Biphenyl (PCB)** - PCBs are a group of toxic, persistent chemicals, produced by chlorination of biphenyl, that once were used in high voltage electrical transformers because they conducted heat well while being fire resistant and good electrical insulators. These contaminants typically are generated from metal degreasing, printed circuit board cleaning, gasoline, and wood preserving processes. Further sale or use of PCBs was banned in 1979.

**Pump and Treat** - Pump and treat is a general term used to describe cleanup methods that involve the pumping of groundwater to the surface for treatment. It is one of the most common methods of treating polluted aquifers and groundwater.

**Radioactive Waste** - Radioactive waste is any waste that emits energy as rays, waves, or streams of energetic particles. Sources of such wastes include nuclear reactors, research institutions, and hospitals.

**Radionuclide** - A radionuclide is a radioactive element characterized according to its atomic mass and atomic number, which can be artificial or naturally occurring. Radionuclides have a long life as soil or water pollutants. Radionuclides cannot be destroyed or degraded; therefore, applicable technologies involve separation, concentration and volume reduction, immobilization, or vitrification. See also Solidification and Stabilization.

**Radon** - Radon is a colorless, naturally occurring, radioactive, inert gaseous element formed by radioactive decay of radium atoms. See also Radioactive Waste and Radionuclide.

**Release** - A release is any spilling, leaking, pumping, pouring, emitting, emptying, discharging, injecting, leaching, dumping, or disposing into the environment of a hazardous or toxic chemical or extremely hazardous substance, as defined under RCRA. See also Resource Conservation and Recovery Act.

**Resource Conservation and Recovery Act (RCRA)** - RCRA is a Federal law enacted in 1976 that established a regulatory system to track hazardous substances from their

generation to their disposal. The law requires the use of safe and secure procedures in treating, transporting, storing, and disposing of hazardous substances. RCRA is designed to prevent the creation of new, uncontrolled hazardous waste sites.

**Risk Communication** - Risk communication, the exchange of information about health or environmental risks among risk assessors, risk managers, the local community, news media and interest groups, is the process of informing members of the local community about environmental risks associated with a site and the steps that are being taken to manage those risks.

**Saturated Zone** - The saturated zone is the area beneath the surface of the land in which all openings are filled with water at greater than atmospheric pressure.

**Seismic Reflection and Refraction** - Seismic reflection and refraction is a technology used to examine the geophysical features of soil and bedrock, such as debris, buried channels, and other features.

**Site Assessment** - A site assessment is the process by which it is determined whether contamination is present on a site.

**Sludge** - Sludge is a semisolid residue from air or water treatment processes. Residues from treatment of metal wastes and the mixture of waste and soil at the bottom of a waste lagoon are examples of sludge, which can be a hazardous waste.

**Slurry-Phase Bioremediation** - Slurry-phase bioremediation, a treatment technology that can be used alone or in conjunction with other biological, chemical, and physical treatments, is a process through which organic contaminants are converted to innocuous compounds. Slurry-phase bioremediation can be effective in treating various SVOCs and nonvolatile organic compounds, as well as fuels, creosote, pentachlorophenols (PCP), and PCBs. See also Polychlorinated Biphenyl.

**Soil Boring** - Soil boring is a process by which a soil sample is extracted from the ground for chemical, biological, and analytical testing to determine the level of contamination present.

**Soil Gas** - Soil gas consists of gaseous elements and compounds that occur in the small spaces between particles of the earth and soil. Such gases can move through or leave the soil or rock, depending on changes in pressure.

**Soil Vapor Extraction (SVE)** - SVE, the most frequently selected innovative treatment at Super-fund sites, is a process that physically separates contaminants from soil in a vapor form by exerting a vacuum through the soil formation. Soil vapor extraction removes VOCs and some SVOCs from soil beneath the ground surface. See also Volatile Organic Carbon.

**Soil Washing** - Soil washing is an innovative treatment technology that uses liquids (usually water, sometimes combined with chemical additives) and a mechanical process to scrub soils, removes hazardous contaminants, and concentrates the contaminants into a smaller volume. The technology is used to treat a wide range of contaminants, such as metals, gasoline, fuel oils, and pesticides. Soil washing is a relatively low-cost alternative for separating waste and minimizing volume as necessary to facilitate subsequent treatment. It is often used in combination with other treatment technologies. The technology can be brought to the site, thereby eliminating the need to transport hazardous wastes.

**Solidification and Stabilization** - Solidification and stabilization are the processes of removing wastewater from a waste or changing it chemically to make the waste less permeable and susceptible to transport by water. Solidification and stabilization technologies can immobilize many heavy metals, certain radionuclides, and selected organic compounds, while decreasing the surface area and permeability of many types of sludge, contaminated soils, and solid wastes.

**Solvent** - A solvent is a substance, usually liquid, that is capable of dissolving or dispersing one or more other substances.

**Solvent Extraction** - Solvent extraction is an innovative treatment technology that uses a solvent to separate or remove hazardous organic contaminants from oily-type wastes, soils, sludges, and sediments. The technology does not destroy contaminants, but concentrates them so they can be recycled or destroyed more easily by another technology. Solvent extraction has been shown to be effective in treating sediments, sludges, and soils that contain primarily organic contaminants, such as PCBs, VOCs, halogenated organic compounds, and petroleum wastes. Such contaminants typically are generated from metal degreasing, printed circuit board cleaning, gasoline, and wood preserving processes. Solvent extraction is a transportable technology that can be brought to the site. See also Polychlorinated Biphenyl and Volatile Organic Compound.

**Surfactant Flushing** - Surfactant flushing is an innovative treatment technology used to treat contaminated groundwater. Surfactant flushing of NAPLs increases the solubility and mobility of the contaminants in water so that the NAPLs can be biodegraded more easily in an aquifer or recovered for treatment aboveground.

**Surface Water** - Surface water is all water naturally open to the atmosphere, such as rivers, lakes, reservoirs, streams, and seas.

**Superfund** - Super-fund is the trust fund that provides for the cleanup of significantly hazardous substances released into the environment, regardless of fault. The Superfund was established under Comprehensive Environmental Response, Compensation, and Liability Act (CERCLA) and subsequent amendments to CERCLA. The term Super-fund is also used to refer to cleanup programs designed and conducted under CERCLA and its subsequent amendments.

**Superfund Amendment and Reauthorization Act (SARA)** - SARA is the 1986 act amending Comprehensive Environmental Response, Compensation, and Liability Act (CERCLA) that increased the size of the Super-fund trust fund and established a preference for the development and use of permanent remedies, and provided new enforcement and settlement tools.

**Thermal Desorption** - Thermal desorption is an innovative treatment technology that heats soils contaminated with hazardous wastes to temperatures from 200 to 1,000 F so that contaminants that have low boiling points will vaporize and separate from the soil. The vaporized contaminants are then collected for further treatment or destruction, typically by an air emissions treatment system. The technology is most effective at treating VOCs, SVOCs and other organic contaminants, such as PCBs, PAHs, and pesticides. It is effective in separating organics from refining wastes, coal tar wastes, waste from wood treatment, and paint wastes. It also can separate solvents, pesticides, PCBs, dioxins, and fuel oils from contaminated soil. See also Polychlorinated Biphenyl and Volatile Organic Compound.

**Total Petroleum Hydrocarbon (TPH)** - TPH refers to a measure of concentration or mass of petroleum hydrocarbon constituents present in a given amount of air, soil, or water.

**Toxicity** - Toxicity is a quantification of the degree of danger posed by a substance to animal or plant life.

**Toxicity Characteristic Leaching Procedure (TCLP)** - The TCLP is a testing procedure used to identify the toxicity of wastes and is the most commonly used test for determining the degree of mobilization offered by a solidification and stabilization process. Under this procedure, a waste is subjected to a process designed to model the leaching effects that would occur if the waste was disposed of in an RCRA Subtitle D municipal landfill. See also Solidification and Stabilization.

**Toxic Substance** - A toxic substance is a chemical or mixture that may present an unreasonable risk of injury to health or the environment.

**Treatment Wall (also Passive Treatment Wall)** - A treatment wall is a structure installed underground to treat contaminated groundwater found at hazardous waste sites. Treatment walls, also called passive treatment walls, are put in place by constructing a giant trench across the flow path of contaminated groundwater and filling the trench with one of a variety of materials carefully selected for the ability to clean up specific types of contaminants. As the contaminated groundwater passes through the treatment wall, the contaminants are trapped by the treatment wall or transformed into harmless substances that flow out of the wall. The major advantage of using treatment walls is that they are passive systems that treat the contaminants in place so the property can be put to productive use while it is being cleaned up. Treatment walls are useful at some sites contaminated with chlorinated solvents, metals, or radioactive contaminants.

**Unsaturated Zone** - The unsaturated zone is the area between the land surface and the uppermost aquifer (or saturated zone). The soils in an unsaturated zone may contain air and water.

**Vadose Zone** - The vadose zone is the area between the surface of the land and the aquifer water table in which the moisture content is less than the saturation point and the pressure is less than atmospheric. The openings (pore spaces) also typically contain air or other gases.

**Vapor** - Vapor is the gaseous phase of any substance that is liquid or solid at atmospheric temperatures and pressures. Steam is an example of a vapor.

**Volatile Organic Compound (VOC)** - AVOC is one of a group of carbon-containing compounds that evaporate readily at room temperature. Examples of volatile organic compounds include trichloroethane, trichloroethylene, benzene, toluene, ethylbenzene, and xylene (BTEX). These contaminants typically are generated from metal degreasing, printed circuit board cleaning, gasoline, and wood preserving processes.

**Volatilization** - Volatilization is the process of transfer of a chemical from the aqueous or liquid phase to the gas phase. Solubility, molecular weight, and vapor pressure of the liquid and the nature of the gas-liquid affect the rate of volatilization.

**Voluntary Cleanup Program (VCP)** - AVCP is a formal means established by many states to facilitate assessment, cleanup, and redevelopment of brownfields sites. VCPs typically address the identification and cleanup of potentially contaminated sites that are not on the National Priorities List (NPL). Under VCPs, owners or developers of a site are encouraged to approach the state voluntarily to work out a process by which the site can be readied for development. Many state VCPs provide technical assistance, liability assurances, and funding support for such efforts.

**Wastewater** - Wastewater is spent or used water from an individual home, a community, a farm, or an industry that contains dissolved or suspended matter.

**Water Table** - A water table is the boundary between the saturated and unsaturated zones beneath the surface of the earth, the level of groundwater, and generally is the level to which water will rise in a well. See also Aquifer and Groundwater.

**X-Ray Fluorescence Analyzer** - An x-ray fluorescence analyzer is a self-contained, field-portable instrument, consisting of an energy dispersive x-ray source, a detector, and a data processing system that detects and quantifies individual metals or groups of metals.

---

## Appendix C Bibliography

A "PB" publication number in parentheses indicates that the document is available from the National Technical Information Service (NTIS), 5285 Port Royal Road, Springfield, VA 22161, (703-605-6000).

### Site Assessment

ASTM. 1997. Standard Practice for Environmental Site Assessments: Phase I Environmental Site Assessment Process. American Society for Testing Materials (ASTM E1527-97).

ASTM. 1996. Standard Practice for Environmental Site Assessments: Transaction Screen Process. American Society for Testing Materials (ASTM E1528-96).

ASTM. 1995. Guide for Developing Conceptual Site Models for Contaminated Sites. American Society for Testing and Materials (ASTM E1689-95).

ASTM. 1995. Provisional Standard Guide for Accelerated Site Characterization for Confirmed or Suspected Petroleum Releases. American Society for Testing and Materials (ASTM PS3 95).

Geo-Environmental Solutions. n.d. <http://www.gesolutions.com/assess.htm>.

Geoprobe Systems, Inc. 1998. Rental Rate Sheet. September 15.

Robbat, Albert, Jr. 1997. Dynamic Workplans and Field Analytics: The Keys to Cost Effective Site Characterization and Cleanup. Tufts University under Cooperative Agreement with the U.S. Environmental Protection Agency. October.

US. EPA. 1998 Quality Assurance Guidance for Conducting Brownfields Site Assessments (EPA 540-R-98-038) September.

U.S. EPA. 1997. Expedited Site Assessment Tools for Underground Storage Tank Sites: A Guide for Regulators and Consultants (EPA 5 10-B-97-001).

U.S. EPA. 1997. Field Analytical and Site Characterization Technologies: Summary of Applications (EPA 542-R-97-011).

U.S. EPA. 1997. Road Map to Understanding Innovative Technology Options for Brownfields Investigation and Cleanup. OSWER. (PB97-144810).

U.S. EPA. 1997. The Tool Kit of Technology Information Resources for Brownfields Sites. OSWER. (PB97-144828).

U.S. EPA. 1996. Consortium for Site Characterization Technology: Fact Sheet (EPA 542-F 96-012).

U.S. EPA. 1996. Field Portable X-Ray Fluorescence (FPXRF), Technology Verification Program: Fact Sheet (EPA 542-F-96-009a).

U.S. EPA. 1996. Portable Gas Chromatograph/Mass Spectrometers (GC/MS), Technology Verification Program: Fact Sheet (EPA 542-F-96-009c).

U.S. EPA. 1996. Site Characterization Analysis Penetrometer System (SCAPS) LIF Sensor (EPA 540-MR-95-520, EPA 540 R-95-520).

US. EPA. 1996. Site Characterization and Monitoring: A Bibliography of EPA Information Resources (EPA 542-B-96-001).

U.S. EPA. 1996. Soil Screening Guidance (540/R-96/128).

U.S. EPA. 1995. Clor-N-Soil PCB Test Kit L2000 PCB/Chloride Analyzer (EPA 540-MR 95-518, EPA 540-R-95-5 18).

- U.S. EPA. 1995. Contract Laboratory Program: Volatile Organics Analysis of Ambient Air in Canisters Revision VCAA01.0 (PB95-963524).
- U.S. EPA. 1995. Contract Lab Program: Draft Statement of Work for Quick Turnaround Analysis (PB95-963523).
- U.S. EPA. 1995. EnviroGard PCB Test Kit (EPA 540-MR-95-5 17, EPA 540-R-95-517).
- U.S. EPA. 1995. Field Analytical Screening Program: PCB Method (EPA 540-MR-95-521, EPA 540-R-95-521).
- U.S. EPA. 1995. PCB Method, Field Analytical Screening Program (Innovative Technology Evaluation Report) (EPA 540-R-95-521, PB96-130026); Demonstration Bulletin (EPA 540 MR-95-521).
- U.S. EPA. 1995. Profile of the Fabricated Metal Products Industry (EPA 3 10-R-95-007).
- U.S. EPA. 1995. Rapid Optical Screen Tool (ROSTTM) (EPA 540-MR-95-519, EPA 540-R 95-519).
- U.S. EPA. 1995. Risk Assessment Guidance for Superfund. <http://www.epa.gov/ncepihom/Catalog/EPA540R95132.html>.
- U.S. EPA. 1994. Assessment and Remediation of Contaminated Sediments (ARCS) Program (EPA 905-R-94-003).
- U.S. EPA. 1994. Characterization of Chromium-Contaminated Soils Using Field-Portable X-ray Fluorescence (PB94-210457).
- U.S. EPA. 1994. Development of a Battery-Operated Portable Synchronous Luminescence Spectrofluorometer (PB94-170032).
- U.S. EPA. 1994. Engineering Forum Issue: Considerations in Deciding to Treat Contaminated Unsaturated Soils *In Situ* (EPA 540-S-94-500, PB94-177771).
- U.S. EPA. 1994. SITE Program: An Engineering Analysis of the Demonstration Program (EPA 540-R-94-530).
- U.S. EPA. 1993. Data Quality Objectives Process for Superfund (EPA 540-R-93-071).
- U.S. EPA. 1993. Conference on the Risk Assessment Paradigm After 10 Years: Policy and Practice, Then, Now, and in the Future, <http://www.epa.gov/ncepihom/Catalog/EPA600R93039.html>.
- U.S. EPA. 1993. Guidance for Evaluating the Technical Impracticability of Ground Water Restoration. OSWER directive (9234.2-25).
- U.S. EPA. 1993. Guide for Conducting Treatability Studies Under CERCLA: Biodegradation Remedy Selection (EPA 540-R-93-519a, PB94-117470).
- U.S. EPA. 1993. Subsurface Characterization and Monitoring Techniques (EPA 625-R-93 003a&b).
- U.S. EPA. 1992. Characterizing Heterogeneous Wastes: Methods and Recommendations (March 26-28, 1991) (PB92-216894).
- U.S. EPA. 1992. Conducting Treatability Studies Under RCRA (OSWER Directive 9380.3 09FS, PB92-963501).
- U.S. EPA. 1992. Guidance for Data Useability in Risk Assessment (Part A) (9285.7-09A).
- U.S. EPA. 1992. Guide for Conducting Treatability Studies Under CERCLA: Final (EPA 540-R-92-071A, PB93-126787).
- U.S. EPA. 1992. Guide for Conducting Treatability Studies Under CERCLA: Soil Vapor Extraction (EPA 540-2-91-019a&b, PB92-227271 & PB92-224401).
- U.S. EPA. 1992. Guide for Conducting Treatability Studies Under CERCLA: Soil Washing (EPA 540-2-91-020a&b, PB92-170570 & PB92-170588).
- U.S. EPA. 1992. Guide for Conducting Treatability Studies Under CERCLA: Solvent Extraction (EPA 540-R-92-016a, PB92-239581).
- U.S. EPA. 1992. Guide to Site and Soil Description for Hazardous Waste Site Characterization, Volume 1: Metals (PB92-146158).
- U.S. EPA. 1992. International Symposium on Field Screening Methods for Hazardous Wastes and Toxic Chemicals (2nd), Proceedings. Held in Las Vegas, Nevada on February 12-14, 1991 (PB92-125764).
- U.S. EPA. 1992. Sampling of Contaminated Sites (PB92-110436).
- U.S. EPA. 1991. Ground Water Issue: Characterizing Soils for Hazardous Waste Site Assessment (PB-91-921294).

U.S. EPA. 1991. Guide for Conducting Treatability Studies Under CERCLA: Aerobic Biodegradation Remedy Screening (EPA 540-2-91-013a&b, PB92-109065 & PB92-109073).

U.S. EPA. 1991. Interim Guidance for Dermal Exposure Assessment (EPA 600-8-91-011A).

U.S. EPA. 1990. A New Approach and Methodologies for Characterizing the Hydrogeologic Properties of Aquifers (EPA 600-2-90-002).

U.S. EPA. 1986. Super-fund Public Health Evaluation Manual (EPA 540-1-86-060).

U.S. EPA. n.d. Status Report on Field Analytical Technologies Utilization: Fact Sheet (no publication number available).

U.S.G.S. [http://www.mapping.usgs.gov/esic/to\\_order.html](http://www.mapping.usgs.gov/esic/to_order.html).

Vendor Field Analytical and Characterization Technologies System (Vendor FACTS), Version 1.0 (Vendor FACTS can be downloaded from the Internet at [www.prcemi.com/visitt](http://www.prcemi.com/visitt) or from the CLU-IN Web site at <http://clu-in.com>).

The Whitman Companies. Last modified October 4, 1996. Environmental Due Diligence. <http://www.whitmanco.com/dilgnce> 1. html.

## Cleanup

ASTM. n.d. New Standard Guide for Remediation by Natural Attenuation at Petroleum Release Sites (ASTM E50.01).

Federal Remediation Technology Roundtable. [http://www.frtr.gov/matrix/top\\_page.html](http://www.frtr.gov/matrix/top_page.html).

Interagency Cost Workgroup. 1994. Historical Cost Analysis System. Version 2.0.

Los Alamos National Laboratory. 1996. A Compendium of Cost Data for Environmental Remediation Technologies (LA-UR-96-2205).

Oak Ridge National Laboratory. n.d. Treatability of Hazardous Chemicals in Soils: Volatile and Semi-Volatile Organics (ORNL-6451).

Robbat, Albert, Jr. 1997. Dynamic Workplans and Field Analytics: The Keys to Cost Effective Site Characteriza-

tion and Cleanup. Tufts University under Cooperative Agreement with the U.S. Environmental Protection Agency. October.

U.S. EPA. 1998. Self-Audit and Inspection Guide for Facilities Conducting Cleaning, Preparation, and Organic Coating of Metal Parts. (EPA 305-B-95-002).

U.S. EPA. 1997. Road Map to Understanding Innovative Technology Options for Brownfields Investigation and Cleanup. OSWER. PB97-144810).

U.S. EPA. 1997. The Tool Kit of Technology Information Resources for Brownfields Sites. OSWER. (PB97-144828).

U.S. EPA. 1996. Bioremediation Field Evaluation: Champion International Super-fund Site, Libby, Montana (EPA 540-R-96-500).

U.S. EPA. 1996. Bibliography for Innovative Site Clean-Up Technologies (EPA 542-B-96 003).

U.S. EPA. 1996. Bioremediation of Hazardous Wastes: Research, Development, and Field Evaluations (EPA 540-R-95-532, PB96-130729).

U.S. EPA. 1996. Citizen's Guides to Understanding Innovative Treatment Technologies (EPA 542-F-96-013):

- Bioremediation (EPA 542-F-96-007, EPA 542-F-96-023)
- Chemical Dehalogenation (EPA 542-F-96-004, EPA 542-F-96-020)
- *In Situ* Soil Flushing (EPA 542-F-96-006, EPA 542-F-96-022)
- Innovative Treatment Technologies for Contaminated Soils, Sludges, Sediments, and Debris (EPA 542-F-96-001, EPA 542-F-96-017)
- Phytoremediation (EPA 542-F-96-014, EPA 542-F-96-025)
- Soil Vapor Extraction and Air Sparging (EPA 542-F-96-008, EPA 542-F-96-024)
- Soil Washing (EPA 542-F-96-002, EPA 542-F-96-018)
- Solvent Extraction (EPA 542-F-96-003, EPA 542-F-96-019)

- Thermal Desorption (EPA 542-F-96-005, EPA 542-F-96-021)
  - Treatment Walls (EPA 542-F-96-O 16, EPA 542-F-96-027)
- U.S. EPA. 1996. Cleaning Up the Nation's Waste Sites: Markets and Technology Trends (1996 Edition) (EPA 542-R-96-005, PB96-178041).
- U.S. EPA. 1996. Completed North American Innovative Technology Demonstration Projects (EPA 542-B-96-002, PB96-153127).
- U.S. EPA. 1996. Cone Penetrometer/Laser Induced Fluorescence (LIF) Technology Verification Program: Fact Sheet (EPA 542-F-96-009b).
- U.S. EPA. 1996. EPA Directive: Initiatives to Promote Innovative Technologies in Waste Management Programs (EPA 540-F-96-012).
- U.S. EPA. 1996. Errata To Guide To EPA materials on Underground Storage Tanks (EPA 5 10-F-96-002)
- U.S. EPA. 1996. How to Effectively Recover Free Product at Leaking Underground Storage Tank Sites: A Guide for State Regulators (EPA 5 10-F-96-001; Fact Sheet: EPA 5 10-F-96005).
- U.S. EPA. 1996. Innovative Treatment Technologies: Annual Status Report Database (ITT Database).
- U.S. EPA. 1996. Introducing TANK Racer (EPA 5 10-F96-001).
- U.S. EPA. 1996. Market Opportunities for Innovative Site Cleanup Technologies: Southeastern States (EPA 542-R-96-007, PB96-199518).
- U.S. EPA. 1996. Recent Developments for *In Situ* Treatment of Metal-Contaminated Soils (EPA 542-R-96-008, PB96-153135).
- U.S. EPA. 1996. Review of Intrinsic Bioremediation of TCE in Groundwater at Picatinny Arsenal, New Jersey and St. Joseph, Michigan (EPA 600-A-95-096, PB95-252995).
- U.S. EPA. 1996. State Policies Concerning the Use of Injectants for *In Situ* Groundwater Remediation (EPA 542-R-96-001, PB96-164538).
- U.S. EPA. 1995. Abstracts of Remediation Case Studies (EPA 542-R-95-001, PB95 201711).
- U.S. EPA. 1995. Accessing Federal Data Bases for Contaminated Site Clean-Up Technologies, Fourth Edition (EPA 542-B-95-005, PB96-141601).
- U.S. EPA. 1995. Bioremediation Field Evaluation: Eielson Air Force Base, Alaska (EPA 540-R-95-533).
- U.S. EPA. 1995. Bioremediation Field Initiative Site Profiles:
- Champion Site, Libby, MT (EPA 540-F-95-506a)
  - Eielson Air Force Base, AK (EPA 540-F-95-506b)
  - Hill Air Force Base Super-fund Site, UT (EPA 540-F-95-506c)
  - Public Service Company of Colorado (EPA 540-F-95-506d)
  - Escambia Wood Preserving Site, FL (EPA 540-F-95-50%)
  - Reilly Tar and Chemical Corporation , MN (EPA 540-F-95-506h)
- U.S. EPA. 1995. Bioremediation Final Performance Evaluation of the Prepared Bed Land Treatment System, Champion International Superfund Site, Libby, Montana: Volume I, Text (EPA 600-R-95-156a); Volume II, Figures and Tables (EPA 600-R-95-156b)
- U.S. EPA. 1995. Bioremediation of Petroleum Hydrocarbons: A Flexible, Variable Speed Technology (EPA 600-A-95-140, PB96-139035).
- U.S. EPA. 1995. Contaminants and Remedial Options at Selected Metal Contaminated Sites (EPA 540-R-95-5 12, PB95-271961).
- U.S. EPA. 1995. Development of a Photothermal Detoxification Unit: Emerging Technology Summary (EPA 540-SR-95-526); Emerging Technology Bulletin (EPA 540-F-95-505).
- US. EPA. 1995. Electrokinetic Soil Processing: Emerging Technology Bulletin (EPA 540-F 95-504); ET Project Summary (EPA 540-SR-93-515).
- U.S. EPA. 1995. Emerging Abiotic *In Situ* Remediation Technologies for Groundwater and Soil: Summary Report (EPA 542-S-95-001, PB95-239299).



- U.S. EPA. 1995. Emerging Technology Program (EPA 540-F-95-502).
- U.S. EPA. 1995. ETI: Environmental Technology Initiative (document order form) (EPA 542-F-95-007).
- U.S. EPA. 1995. Federal Publications on Alternative and **Innovative Treatment** Technologies for Corrective Action and Site Remediation, Fifth Edition (EPA 542-B-95-004, PB96 145099).
- U.S. EPA. 1995. Federal Remediation Technologies Roundtable: 5 Years of Cooperation (EPA 542-F-95-007).
- U.S. EPA. 1995. Guide to Documenting Cost and Performance for Remediation Projects (EPA 542-B-95-002, PB95-182960).
- U.S. EPA. 1995. *In Situ* Metal-Enhanced Abiotic Degradation Process Technology, Environmental Technologies, Inc.: Demonstration Bulletin (EPA 540-MR-95-510).
- U.S. EPA. 1995. *In Situ* Vitrification Treatment: Engineering Bulletin (EPA 540-S-94-504, PB95-125499).
- U.S. EPA. 1995. Intrinsic Bioattenuation for Subsurface Restoration (book chapter) (EPA 600-A-95-112, PB95-274213).
- U.S. EPA. 1995. J.R. Simplot *Ex Situ* Bioremediation Technology for Treatment of TNT Contaminated Soils: Innovative Technology Evaluation Report (EPA 540-R-95-529); Site Technology Capsule (EPA 540-R-95-529a).
- U.S. EPA. 1995. Lessons Learned About *In Situ* Air Sparging at the Denison Avenue Site, Cleveland, Ohio (Project Report), Assessing UST Corrective Action Technologies (EPA 600 R-95-040, PB95-188082).
- U.S. EPA. 1995. Microbial Activity in Subsurface Samples Before and During Nitrate Enhanced Bioremediation (EPA 600-A-95-109, PB95-274239).
- U.S. EPA. 1995. Musts For USTS: A Summary of the Regulations for Underground Tank Systems (EPA 510-K-95-002).
- U.S. EPA. 1995. Natural Attenuation of Trichloroethene at the St. Joseph, Michigan, Super-fund Site (EPA 600-sv-95-001).
- U.S. EPA. 1995. New York State Multi-Vendor Bioremediation: *En Situ* Biovault, ENSR Consulting and Engineering/Larson Engineers: Demonstration Bulletin (EPA 540-MR-95 525).
- U.S. EPA. 1995. Process for the Treatment of Volatile Organic Carbon and Heavy-Metal Contaminated Soil, International Technology Corp.: Emerging Technology Bulletin (EPA 540-F-95-509).
- U.S. EPA. 1995. Progress In Reducing Impediments to the Use of Innovative Remediation Technology (EPA 542-F-95-008, PB95-262556).
- U.S. EPA. 1995. Remedial Design/Remedial Action Handbook (PB95-963307-ND2).
- U.S. EPA. 1995. Remedial Design/Remedial Action Handbook Fact Sheet (PB95-9633 12 NDZ).
- U.S. EPA. 1995. Remediation Case Studies: Bioremediation (EPA 542-R-95-002, PB95 182911).
- U.S. EPA. 1995. Remediation Case Studies: Fact Sheet and Order Form (EPA 542-F-95 003); Four Document Set (PB95-182903).
- U.S. EPA. 1995. Remediation Case Studies: **Groundwater** Treatment (EPA 542-R-95-003, PB95-182929).
- U.S. EPA. 1995. Remediation Case Studies: Soil Vapor Extraction (EPA 542-R-95-004, PB95-182937).
- U.S. EPA. 1995. Remediation Case Studies: Thermal Desorption, Soil Washing, and *In Situ* Vitrification (EPA 542-R-95-005, PB95-182945).
- U.S. EPA. 1995. Remediation Technologies Screening Matrix and Reference Guide, Second Edition (PB95-104782; Fact Sheet: EPA 542-F-95-002). Federal Remediation Technology Roundtable. Also see Internet: <http://www.frtr.gov/matrix/top-page.html>.
- U.S. EPA. 1995. Review of Mathematical Modeling for Evaluating Soil Vapor Extraction Systems (EPA 540-R-95-5 13, PB95-243051).
- U.S. EPA. 1995. Selected Alternative and Innovative Treatment Technologies for Corrective Action and Site Remediation: A Bibliography of EPA Information Resources (EPA 542-B-95 001).
- US. EPA. 1995. SITE Emerging Technology Program (EPA 540-F-95-502).

- U.S. EPA. 1995. Soil Vapor Extraction (SVE) Enhancement Technology Resource Guide Air Sparging, Bioventing, Fracturing, Thermal Enhancements (EPA 542-B-95-003).
- U.S. EPA. 1995. Soil Vapor Extraction Implementation Experiences (OSWER Publication 9200.5-223FS, EPA 540-F-95-030, PB95-9633 15).
- U.S. EPA. 1995. Surfactant Injection for Ground Water Remediation: State Regulators' Perspectives and Experiences (EPA 542-R-95-011, PB96-164546).
- U.S. EPA. 1995. Symposium on Bioremediation of Hazardous Wastes: Research, Development, and Field Evaluations, Abstracts: Rye Town Hilton, Rye Brook, New York, August 8-10, 1995 (EPA 600-R-95-078).
- U.S. EPA. 1993-1995. Technology Resource Guides:.
- Bioremediation Resource Guide (EPA 542-B-93-004)
  - Groundwater Treatment Technology Resource Guide (EPA 542-B-94-009, PB95 138657)
  - Physical/Chemical Treatment Technology Resource Guide (EPA 542-B-94-008, PB95-138665)
  - Soil Vapor Extraction (SVE) Enhancement Technology Resource Guide: Air Sparging, Bioventing, Fracturing, and Thermal Enhancements (EPA 542-B-95 003)
  - Soil Vapor Extraction (SVE) Treatment Technology Resource Guide (EPA 542-B 94-007)
- U.S. EPA. 1995. Waste Vitrification Through Electric Melting, Ferro Corporation: Emerging Technology Bulletin (EPA 540-F-95-503).
- U.S. EPA. 1994. Accessing EPA's Environmental Technology Programs (EPA 542-F-94 005).
- U.S. EPA. 1994. Bioremediation: A Video Primer (video) (EPA 5 10-V-94-001).
- U.S. EPA. 1994. Bioremediation in the Field Search System (EPA 540-F-95-507; Fact Sheet: EPA 540-F-94-506).
- U.S. EPA. 1994. Contaminants and Remedial Options at Solvent-Contaminated Sites (EPA 600-R-94-203, PB95-177200).
- U.S. EPA. 1990-1994. EPA Engineering Bulletins:.
- Chemical Dehalogenation Treatment: APEG Treatment (EPA 540-2-90-015, PB91-228031)
  - Chemical Oxidation Treatment (EPA 540-2-g 1-025)
  - *In Situ* Biodegradation Treatment (EPA 540-S-94-502, PB94- 190469)
  - *In Situ* Soil Flushing (EPA 540-2-g 1-02 1)
  - *In Situ* Soil Vapor Extraction Treatment (EPA 540-2-91-006, PB91-228072)
  - *In Situ* Steam Extraction Treatment (EPA 540-2-91-005, PB91-2228064)
  - *In Situ* Vitrification Treatment (EPA 540-S-94-504, PB95-125499)
  - Mobile/Transportable Incineration Treatment (EPA 540-2-90-014)
  - Pyrolysis Treatment (EPA 540-S-92-010)
  - Rotating Biological Contactors (EPA 540-S-92-007)
  - Slurry Biodegradation (EPA 540-2-90-016, PB91-228049)
  - Soil Washing Treatment (EPA 540-2-90-017, PB91-228056)
  - Solidification/Stabilization of Organics and Inorganics (EPA 540-S-92-015)
  - Solvent Extraction Treatment (EPA 540-S-94-503, PB94-190477)
  - Supercritical Water Oxidation (EPA 540-S-92-006)
  - Technology Preselection Data Requirements (EPA 540-S-92-009)
  - Thermal Desorption Treatment (EPA 540-S-94-501, PB94-160603)
- U.S. EPA. 1994. Field Investigation of Effectiveness of Soil Vapor Extraction Technology (Final Project Report) (EPA 600-R-94-142, PB94-205531).
- U.S. EPA. 1994. Ground Water Treatment Technologies Resource Guide (EPA 542-B-94 009, PB95-138657).
- U.S. EPA. 1994. How to Evaluate Alternative Cleanup Technologies for Underground Storage Tank Sites: A Guide for Corrective Action Plan Reviewers (EPA 510-B-94-003, S/N 055-000-00499-4); Pamphlet (EPA 510-F-95-003).
- U.S. EPA. 1994. *In Situ* Steam Enhanced Recovery Process, Hughes Environmental Systems, Inc.: Innovative Technology Evaluation Report (EPA 540-R-94-510, PB95

271854); Site Technology Capsule (EPA 540-R-94-5 10a, PB95-270476).

U.S. EPA. 1994. *In Situ* Vitrification, Geosafe Corporation: Innovative Technology Evaluation Report (EPA 540-R-94-520, PB95-213245); Demonstration Bulletin (EPA 540 MR-94-520).

U.S. EPA. 1994. J.R. Simplot *Ex-Situ* Bioremediation Technology for Treatment of Dinoseb-Contaminated Soils: Innovative Technology Evaluation Report (EPA 540-R-94-508); Demonstration Bulletin (EPA 540-MR-94-508).

U.S. EPA. 1994. Literature Review Summary of Metals Extraction Processes Used to Remove Lead From Soils, Project Summary (EPA 600-SR-94-006).

U.S. EPA. 1994. Northeast Remediation Marketplace: Business Opportunities For Innovative Technologies (Summary Proceedings) (EPA 542-R-94-001, PB94-154770).

U.S. EPA. 1994. Physical/Chemical Treatment Technology Resource Guide (EPA 542-B-94 008, PB95-138665).

U.S. EPA. 1994. Profile of Innovative Technologies and Vendors For Waste Site Remediation (EPA 542-R-94-002, PB95-138418).

U.S. EPA. 1994. Radio Frequency Heating, KAI Technologies, Inc.: Innovative Technology Evaluation Report (EPA 540-R-94-528); Site Technology Capsule (EPA 540-R-94-528a, PB95-249454).

U.S. EPA. 1994. Regional Market Opportunities For Innovative Site Clean-up Technologies: Middle Atlantic States (EPA 542-R-95-010, PB96-121637).

U.S. EPA. 1994. Rocky Mountain Remediation Marketplace: Business Opportunities For Innovative Technologies (Summary Proceedings) (EPA 542-R-94-006, PB95-173738).

U.S. EPA. 1994. Selected EPA Products and Assistance On Alternative Cleanup Technologies (Includes Remediation Guidance Documents Produced By The Wisconsin Department of Natural Resources) (EPA 510-E-94-001).

U.S. EPA. 1994. Soil Vapor Extraction Treatment Technology Resource Guide (EPA 542-B 94-007).

U.S. EPA. 1994. Solid Oxygen Source for Bioremediation Subsurface Soils (revised) (EPA 600-J-94-495, PB95-155149).

U.S. EPA. 1994. Solvent Extraction: Engineering Bulletin (EPA 540-S-94-503, PB94 190477).

U.S. EPA. 1994. Solvent Extraction Treatment System, Terra-Keen Response Group, Inc. (EPA 540-MR-94-521).

U.S. EPA. 1994. Status Reports on *In Situ* Treatment Technology Demonstration and Applications:.

- 'Altering Chemical Conditions (EPA 542-K-94-008)
- Cosolvents (EPA 542-K-94-006)
- Electrokinetics (EPA 542-K-94-007)
- Hydraulic and Pneumatic Fracturing (EPA 542-K-94-005)
- Surfactant Enhancements (EPA 542-K-94-003)
- Thermal Enhancements (EPA 542-K-94-009)
- Treatment Walls (EPA 542-K-94-004)

U.S. EPA. 1994. Subsurface Volatilization and Ventilation System (SWS): Innovative Technology Report (EPA 540-R-94-529, PB96-116488); Site Technology Capsule (EPA 540-R-94-529a, PB95-256111).

U.S. EPA. 1994. Superfund Innovative Technology Evaluation (SITE) Program: Technology Profiles, Seventh Edition (EPA 540-R-94-526, PB95-183919).

U.S. EPA. 1994. Thermal Desorption System, Maxymillian Technologies, Inc.: Site Technology Capsule (EPA 540-R94-507a, PB95-122800).

U.S. EPA. 1994. Thermal Desorption Treatment: Engineering Bulletin (EPA 540-S-94-501, PB94-160603).

U.S. EPA. 1994. Thermal Desorption Unit, Eco Logic International, Inc.: Application Analysis Report (EPA 540-AR-94-504).

U.S. EPA. 1994. Thermal Enhancements: Innovative Technology Evaluation Report (EPA 542-K-94-009).

U.S. EPA. 1994. The Use of Cationic Surfactants to Modify Aquifer Materials to Reduce the Mobility of Hydrophobic Organic Compounds (EPA 600-S-94-002, PB95-111951).

- 
- U.S. EPA. 1994. West Coast Remediation Marketplace: Business Opportunities For Innovative Technologies (Summary Proceedings) (EPA 542-R-94-008, PB95-143319).
- U.S. EPA. 1993. Accutech Pneumatic Fracturing Extraction and Hot Gas Injection, Phase I: Technology Evaluation Report (EPA 540-R-93-509, PB93-216596).
- U.S. EPA. 1993. Augmented *In Situ* Subsurface Bioremediation Process, Bio-Rem, Inc.: Demonstration Bulletin (EPA 540-MR-93-527).
- U.S. EPA. 1993. Biogenesis Soil Washing Technology: Demonstration Bulletin (EPA 540 MR-93-5 10).
- U.S. EPA. 1993. Bioremediation Resource Guide and Matrix (EPA 542-B-93-004, PB94 112307).
- U.S. EPA. 1993. Bioremediation: Using the Land Treatment Concept (EPA 600-R-93-164, PB94-107927).
- U.S. EPA. 1993. Fungal Treatment Technology: Demonstration Bulletin (EPA 540-MR-93 5 14).
- U.S. EPA. 1993. Gas-Phase Chemical Reduction Process, Eco Logic International Inc. (EPA 540-R-93-522, PB95-10025 1, EPA 540-MR-93-522).
- US. EPA. 1993. HRUBOUT, Hrubetz Environmental Services: Demonstration Bulletin (EPA 540-MR-93-524).
- U.S. EPA. 1993. Hydraulic Fracturing of Contaminated Soil, US. EPA: Innovative Technology Evaluation Report (EPA 540-R-93-505, PB94-100161); Demonstration Bulletin (EPA 540-MR-93-505).
- US. EPA. 1993. HYPERVENTILATE: A software Guidance System Created for Vapor Extraction Systems for Apple Macintosh and IBM PC-Compatible Computers (UST #107) (EPA 510-F-93-001); User's Manual (Macintosh disk included) (UST #102) (EPA 500-CB 92-001).
- U.S. EPA. 1993. *In Situ* Bioremediation of Contaminated Ground Water (EPA 540-S-92 003, PB92-224336).
- US. EPA. 1993. *In Situ* Bioremediation of Contaminated Unsaturated Subsurface Soils (EPA -S-93-501, PB93-234565).
- US. EPA. 1993. *In Situ* Bioremediation of Ground Water and Geological Material: A Review of Technologies (EPA 600-SR-93-124, PB93-215564).
- U.S. EPA. 1993. *In Situ* Treatments of Contaminated Groundwater: An Inventory of Research and Field Demonstrations and Strategies for Improving Groundwater Remediation Technologies (EPA 500-K-93-001, PB93-193720).
- U.S. EPA. 1993. Laboratory Study on the Use of Hot Water to Recover Light Oily Wastes from Sands (EPA 600-R-93-021, PB93-167906).
- U.S. EPA. 1993. Low Temperature Thermal Aeration (LTTA) System, Smith Environmental Technologies Corp.: Applications Analysis Report' (EPA 540-AR-93-504); Site Demonstration Bulletin (EPA 540-MR-93-504).
- U.S. EPA. 1993. Mission Statement: Federal Remediation Technologies Roundtable (EPA 542-F-93-006).
- US. EPA. 1993. Mobile Volume Reduction Unit, US. EPA: Applications Analysis Report (EPA 540-AR-93-508, PB94-130275).
- US. EPA. 1993. Overview of UST Remediation Options (EPA 5 10-F-93-029).
- U.S. EPA. 1993. Soil Recycling Treatment, Toronto Harbour Commissioners (EPA 540-AR 93-517, PB94-124674).
- U.S. EPA. 1993. Synopses of Federal Demonstrations of Innovative Site Remediation Technologies, Third Edition (EPA 542-B-93-009, PB94-144565).
- U.S. EPA. 1993. XTRAX Model 200 Thermal Desorption System, OHM Remediation Services Corp.: Site Demonstration Bulletin (EPA 540-MR-93-502).
- U.S. EPA. 1992. Aostra Soil-tech Anaerobic Thermal Process, Soiltech ATP Systems: Demonstration Bulletin (EPA 540-MR-92-008).
- U.S. EPA. 1992. Basic Extractive Sludge Treatment (B.E.S.T.) Solvent Extraction System, Ionics/Resources Conservation Co.: Applications Analysis Report (EPA 540-AR-92-079, PB94-105434); Demonstration Summary (EPA 540-SR-92-079).
- U.S. EPA. 1992. Bioremediation Case Studies: An Analysis of Vendor Supplied Data (EPA 600-R-92-043, PB92-232339).
- U.S. EPA. 1992. Bioremediation Field Initiative (EPA 540-F-92-012).

- U.S. EPA. 1992. Carver Greenfield Process, Dehydrotech Corporation: Applications Analysis Report (EPA 540-AR-92-002, PB93-101152); Demonstration Summary (EPA 540 SR-92-002).
- US. EPA. 1992. Chemical Enhancements to Pump-and-Treat Remediation (EPA 540-S-92 001, PB92-180074).
- U.S. EPA. 1992. Cyclone Furnace Vitrification Technology, Babcock and Wilcox: Applications Analysis Report (EPA 540-AR-92-017, PB93-122315).
- U.S. EPA. 1992. Evaluation of Soil Venting Application (EPA 540-S-92-004, PB92 235605).
- U.S. EPA. 1992. Excavation Techniques and Foam Suppression Methods, McColl Superfund Site, U.S. EPA: Applications Analysis Report (EPA 540-AR-92-015, PB93 100121).
- U.S. EPA. 1992. *In Situ* Biodegradation Treatment: Engineering Bulletin (EPA 540-S-94 502, PB94-190469).
- U.S. EPA. 1992. Low Temperature Thermal Treatment System, Roy F. Weston, Inc.: Applications Analysis Report (EPA 540-AR-92-019, PB94-124047).
- U.S. EPA. 1992. Proceedings of the Symposium on Soil Venting (EPA 600-R-92-174, PB93-122323).
- U.S. EPA. 1992. Soil/Sediment Washing System, Bergman USA: Demonstration Bulletin (EPA 540-MR-92-075).
- US. EPA. 1992. TCE Removal From Contaminated Soil and Groundwater (EPA 540-S-92 002, PB92-224104).
- U.S. EPA. 1992. Technology Alternatives for the Remediation of PCB-Contaminated Soil and Sediment (EPA 540-S-93-506).
- U.S. EPA. 1992. Workshop on Removal, Recovery, Treatment, and Disposal of Arsenic and Mercury (EPA 600-R-92-105, PB92-216944).
- U.S. EPA. 1991. Biological Remediation of Contaminated Sediments, With Special Emphasis on the Great Lakes: Report of a Workshop (EPA 600-9-91-001).
- U.S. EPA. 1991. Debris Washing System, RREL. Technology Evaluation Report (EPA 540 5-91-006, PB91-23 1456).
- U.S. EPA. 1991. Guide to Discharging CERCLA Aqueous Wastes to Publicly Owned Treatment Works (9330.2-13FS).
- U.S. EPA. 1991. *In Situ* Soil Vapor Extraction: Engineering Bulletin (EPA 540-2-91-006, PB91-228072).
- U.S. EPA. 1991. *In Situ* Steam Extraction: Engineering Bulletin (EPA 540-2-91-005, PB91 228064).
- U.S. EPA. 1991. *In Situ* Vapor Extraction and Steam Vacuum Stripping, AWD Technologies (EPA 540-A5-91-002, PB92-218379).
- U.S. EPA. 1991. Pilot-Scale Demonstration of Slurry-Phase Biological Reactor for Creosote Contaminated Soil (EPA 540-A5-91-009, PB94-124039).
- U.S. EPA. 1991. Slurry Biodegradation, International Technology Corporation (EPA 540 MR-9 1-009).
- U.S. EPA. 199 1. Understanding Bioremediation: A Guidebook for Citizens (EPA 540-2-91 002, PB93-205870).
- U.S. EPA. 1990. Anaerobic Biotransformation of Contaminants in the Subsurface (EPA 600 M-90-024, PB91-240549).
- U.S. EPA. 1990. Chemical Dehalogenation Treatment, APEG Treatment: Engineering Bulletin (EPA 540-2-90-015, PB91-228031).
- U.S. EPA. 1990. Enhanced Bioremediation Utilizing Hydrogen Peroxide as a Supplemental Source of Oxygen: A Laboratory and Field Study (EPA 600-2-90-006, PB90-183435).
- U.S. EPA. 1990. Guide to Selecting Superfund Remedial Actions (9355.0-27FS).
- US. EPA. 1990. Slurry Biodegradation: Engineering Bulletin (EPA 540-2-90-016, PB91 228049).
- U.S. EPA. 1990. Soil Washing Treatment: Engineering Bulletin (EPA 540-2-90-017, PB91 228056).
- U.S. EPA. 1989. Facilitated Transport (EPA 540-4-89-003, PB91-133256).
- U.S. EPA. 1989. Guide on Remedial Actions for Contaminated Ground Water (9283.1 02FS).
- U.S. EPA. 1987. Compendium of Costs of Remedial Technologies at Hazardous Waste Sites (EPA 600-2-87-087).

---

U.S. EPA. 1987. Data Quality Objectives for Remedial Response Activities: Development Process (9355.0-07B).

U.S. EPA. 1986. Costs of Remedial Actions at Uncontrolled Hazardous Waste Sites (EPA/640/2-86/037).

U.S. EPA. n.d. Alternative Treatment Technology Information Center (ATTIC) (The ATTIC data base can be accessed by modem at (703) 908-2138).

U.S. EPA. Clean-Up Information (CLU-IN) Bulletin Board System. (CLU-IN can be accessed by modem at (301) 589-8366 or by the Internet at <http://clu-in.com>).

U.S. EPA. n.d. Initiatives to Promote Innovative Technology in Waste Management Programs (OSWER Directive 9308.0-25).

U.S. EPA and University of Pittsburgh. n.d. Ground Water Remediation Technologies Analysis Center. Internet address: <http://www.gwrtac.org>

Vendor Information System for Innovative Treatment Technologies (VISITT), Version 4.0 (VISITT can be downloaded from the Internet at <http://www.prcemi.com/visitt> or from the CLU-IN Web site at <http://clu-in.com>).

United States  
Environmental Protection Agency  
Center for Environmental  
Research Information, G-74  
Cincinnati, OH 45268

**Official Business  
Penalty for Private Use  
\$300**

**EPA/625/R-98/006**

<b>BULK RATE POSTAGE &amp; FEES PAID   EPA PERMIT No. G-35  </b>
--