



# Resource Information

---

## National Vehicle and Fuel Emissions Laboratory



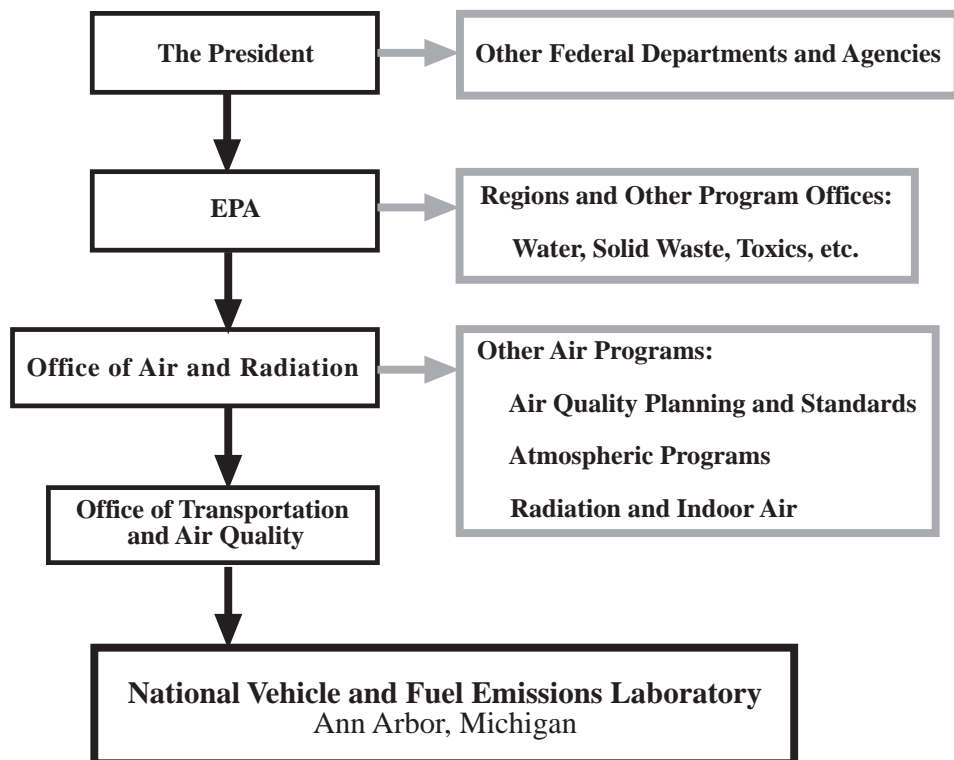
*The U.S. Environmental Protection Agency's (EPA) Office of Transportation and Air Quality's (OTAQ) mission is to reconcile the transportation sector with the environment by advancing clean fuels and technology, and working to promote more liveable communities. OTAQ is responsible for carrying out laws to control air pollution from motor vehicles, engines, and their fuels. OTAQ is divided between EPA's headquarters in Washington, D.C., and the National Vehicle and Fuel Emissions Laboratory (NVFEL) in Ann Arbor, Michigan.*

## Overview

The Laboratory's primary responsibilities include:

- developing national regulatory programs to reduce mobile source related air pollution from light-duty cars and trucks, heavy-duty trucks and busses, and nonroad engines and vehicles.
- evaluating emission control technology.
- providing state and local air quality regulators and transportation planners with access to critical information on transportation programs and incentive-based programs.
- testing vehicles, engines and fuels.
- determining compliance with federal emissions and fuel economy standards.

Organizationally, the lab functions as part of EPA's Washington, D.C., headquarters.



The laboratory was established in 1971, shortly after the creation of EPA. It is located in Ann Arbor, Michigan, near the headquarters of domestic automobile manufacturers to facilitate transfer of test vehicles back and forth.

There are about 400 employees at NVFEL. Staff expertise spans a variety of technical and public policy fields including auto mechanics, engineering, chemistry, economics, natural resources management, and law.



The NVFEL lab provides the Office of Transportation and Air Quality with emission testing services for motor vehicle, heavy-duty engine, and nonroad engine programs in support of rulemakings, enforcement actions, and procedures development. Testing activities include:



- certifying that vehicles and engines meet federal emissions and fuel economy standards.
- analyzing fuels, fuel additives, and exhaust compounds.
- testing engines for in-use compliance.



In addition, the lab assists in the development of automotive technology to reduce conventional pollutants and greenhouse gas emissions, such as Clean Car (Partnership for a New Generation of Vehicles), low NO<sub>x</sub> diesel engine, and alternative fuel technologies.

## For More Information

You can access documents electronically on OTAQ programs on our Web site at:

<http://www.epa.gov/otaq>

You can also contact the NVFEL Library for document information at:

U.S. Environmental Protection Agency  
NVFEL Library  
2000 Traverwood Drive  
Ann Arbor, MI 48105  
(734) 214-4311